

Enhanced Replacement Split Roller Bearings and Seals



**Fits SKF Cooper™, Timken SRB™
and Craft™ Split Bearing Housings**

www.johnhandleybearings.co.uk

Replacement Bearings

John Handley Bearings have now introduced two new series (C and CA) to directly replace other manufacturers split roller bearings, with the added advantage of increased capacities. With all critical mounting dimensions equivalent to the other brands, C and CA bearings can fit directly into existing manufacture's cartridges. Using our 3D printed patented cage design we can exceed the capacities of the existing market leader by **up to 26%**, resulting in longer bearing L10 life (of up to double), reduced downtime and increased productivity.

- ▶ Increased radial, static and axial capacities
- ▶ Unique self-jointing cage technology with no loose parts
- ▶ Uses existing cartridges – no need to replace
- ▶ Dimensionally interchangeable with other brands – no modifications required
- ▶ Designed and manufactured in the UK

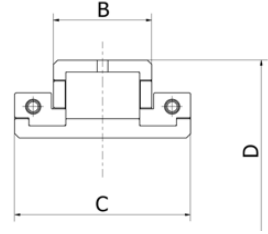
Maintaining all the benefits of split to the shaft bearings and with increased life, the JHB replacement range covers '01/01E/Light' from 30mm to 300mm (1.3/16" to 12") shaft sizes and '02/02E/Medium' from 190mm to 300mm (7 15/16" to 12") shaft sizes.



C Series

Dimensions

Replacement for 01/01E (SKF Cooper™),
Light (Timken SRB™) and S1 (Craft™) Series



Group Size	B	C	D Ø
108	23.8	50.1	84.14
200	25.4	55.7	98.42
208	27.0	55.7	114.30
300	31.8	61.2	133.35
308	38.9	70.7	152.40
400	45.3	81.0	174.62
408	46.9	84.9	203.20
500	54.0	89.7	222.25
508	55.6	98.4	241.30
600	55.6	98.4	254.00

Group Size	B	C	D Ø
608	60.3	109.0	273.05
700	55.5	109.0	285.75
800	60.3	109.0	311.15
900	63.5	115.0	342.90
1000	66.7	122.0	374.65
1100	69.0	128.0	406.40
1200	74.6	143.0	438.15

Capacities & Size Range

108 - 1200 Replacement with 01/01E/Light/S1 Series

JHB Higher Ratings Shown in Yellow - Competitor's Ratings Shown in Grey

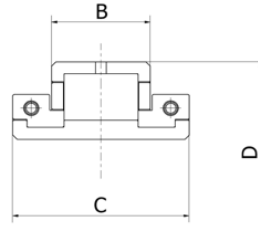
Group Size	Bearing Bore Ø		Capacities			Speed rpm	Part Number FREE / FIXED	
	(mm)	(inch)	Radial		Axial		(mm)	(inch)
			Dynamic Cr kN	Static Cor kN	Dynamic Ca kN			
108	30mm	1. 3/16"	80	85	4.0	5400	CB030M	CB103
	35mm	1. 1/4"					CB035M	CB104
	40mm	1. 7/16"	67	67	3.2		CB040M	CB107
200	45mm 50mm	1. 11/16"	112	130	4.6	4630	CB045M CB050M	CB111
		1. 3/4"	95	105	3.8			CB112
		1. 15/16"						CB115
208	55mm 60mm 65mm	2. 3/16"	155	189	8.6	3940	CB055M CB060M CB065M	CB203
		2. 1/4"	135	157	7.2			CB204
		2. 7/16"						CB207
300	70mm 75mm	2. 11/16"	190	236	12.9	3310	CB070M CB075M	CB211
		2. 3/4"	166	197	10.8			CB212
		2. 15/16"						CB215
		3"					CB300	

Group Size	Bearing Bore Ø		Capacities			Speed rpm	Part Number FREE / FIXED	
	(mm)	(inch)	Radial		Axial		(mm)	(inch)
			Dynamic Cr kN	Static Cor kN	Dynamic Ca kN			
308	80mm	3. 3/16"	242	314	14.3	2790	CB080M	CB303
	85mm	3. 1/4"					CB085M	CB304
400	95mm	3. 11/16"	328	438	20.6	2340	CB095M	CB311
	100mm	3. 3/4"					CB100M	CB312
408	110mm	3. 15/16"	320	421	19.6	1970	CB105M	CB315
	115mm	4"					CB110M	CB403
500	120mm	4. 3/16"	358	503	21.9	1740	CB115M	CB404
	125mm	4. 1/4"	306	407	18.6		CB110M	CB407
508	135mm	4. 7/16"	446	648	26.3	1570	CB120M	CB411
	140mm	4. 1/2"	355	484	22.6		CB125M	CB412
600	150mm	4. 15/16"	464	679	30.5	1450	CB130M	CB415
	155mm	5"	394	542	25.8		CB135M	CB503
608	160mm	5. 3/16"	499	762	34.3	1320	CB140M	CB504
	600/160mm	5. 1/4"	428	616	29.4		CB140M	CB507
700	170mm	5. 7/16"	660	993	67.0	1220	CB150M	CB511
	175mm	5. 3/4"	594	863	56.5		CB155M	CB512
800	180mm	5. 15/16"	627	989	60.3	1070	CB600/160M	CB515
		6"	557	845	52.2		CB160M	CB600
900	190mm	6. 7/16"	627	989	60.3	930	CB608/170M	CB607
	200mm	6. 1/2"	557	845	52.2		CB170M	CB608
1000	220mm	6. 15/16"	627	989	60.3	820	CB175M	CB615
	230mm	7"	557	845	52.2		CB180M	CB700
1100	240mm	7. 15/16"	698	1116	76.1	730	CB190M	CB715
	250mm	8"	679	1078	72.5		CB200M	CB800
1200	270mm	7. 15/16"	698	1116	76.1	650	CB220M	CB900
	275mm	8"	679	1078	72.5		CB230M	CB900
1200	280mm	9"	734	1234	83.8	820	CB240M	CB1000
		10"	715	1191	79.8		CB250M	CB1000
1200	290mm	10"	861	1498	101.4	730	CB1000/260M	CB1100
	300mm	11"	804	1367	96.6		CB260M	CB1100
1200	290mm	11"	949	1636	133.4	650	CB270M	CB1100
	300mm	12"	917	1560	127		CB275M	CB1100
1200	290mm	12"	1090	2011	146.0	650	CB280M	CB1200
	300mm	12"	1041	1885	139		CB290M	CB1200
							CB300M	CB1200

Dimensions

Replacement for 02E (SKF Cooper™),
Medium (Timken SRB™) and S2 (Craft™) Series

Group Size	B	C	D Ø
800	90.5	156.0	368.30
900	90.5	163.0	393.70
1000	96.8	170.0	431.80
1100	101.6	186.0	463.55
1200	103.2	193.0	495.30



Capacities & Size Range

800 - 1200 Replacement with 02E/Medium/S2 Series

JHB Higher Ratings Shown in Yellow - Competitor's Ratings Shown in Grey

Group Size	Bearing Bore Ø		Capacities			Speed rpm	Part Number FREE / FIXED	
	(mm)	(inch)	Radial		Axial		(mm)	(inch)
			Dynamic Cr kN	Static Cor kN	Dynamic Ca kN			
800	190mm	7.15/16"	1172	1693	128	960	CAB190M CAB200M	CAB715 CAB800
	200mm	8"	1137	1627	122			
900	220mm	9"	1272	1939	145	850	CAB220M CAB230M	CAB900
	230mm		1233	1863	138			
1000	240mm	10"	1385	2061	175	750	CAB240M CAB250M CAB260M	CAB1000
	250mm 260mm		1346	1986	167			
1100	270mm	11"	1586	2521	200	670	CAB270M CAB275M CAB280M	CAB1100
	275mm 280mm		1545	2435	190			
1200	290mm	12"	1705	2831	225	610	CAB290M CAB300M	CAB1200
	300mm		1660	2735	214			

Part Number & Referencing

Ordering a JHB split bearing is simple when you have the reference of the existing bearing you wish to replace, using the following examples:

Part Number Comparison

SKF Cooper™

Timken SRB™

Craft™



Series Reference	01 / 01E	Light	S1	C
	02 / 02E	Medium	S2	CA
Type of Bearing	EX	BX (Bearing Expansion)	FL (Floating)	FREE
	GR	BR (Bearing Retained)	HD (Held)	FIXED
Units				
Metric (mm)	M	M	mm	M
Imperial		E		
Examples				
Bearing (Metric)	01EB100MEX	LSM100BX	S1B100mmFL	CB100MFREE
	01EB100MGR	LSM100BR	S1B100mmHD	CB100MFIXED
Bearing (Imperial)	02B215EX	HSE215BX	S2B215FL	CAB215FREE
	02B215GR	HSE215BR	S2B215HD	CAB215FIXED
Bearing / Shaft Size				
Metric	Reference using the shaft size in millimetres mm			
Imperial	Reference using the shaft size in inches. The last two digits are always the number of sixteenths. In a 3 digit reference number; the first number is the whole inch, in a 4 digital reference number; the first two numbers are the whole inch.			
	Imperial Examples	215	2. 15/16"	
		1100	11"	
		615	6 15/16"	

Replacement seals to suit existing housings can be ordered from JHB.

Simply advise us of the seal type and its shaft diameter.

Our range includes:

Felt Seals	F
High Temperature	HT
SealTrain® Composite Triple Labyrinth Seals	CTL
SealTrain® Composite Lip Seal	CLS



SEAL TRAINS®

For details on fitting bearings and housings, refer to housing manufacturer's catalogues (also for further information on screw sizes and relevant tightening torques).



Reprint only with written authorisation from John Handley Bearings.

Every care has been taken to ensure the accuracy of the data contained in this catalogue.

No liability can be accepted for loss or damage suffered through errors or omissions.

ROLLERTRAIN® and SEALTRAIN® are registered trademarks of
Bowman International Limited. Patents Pending.

John Handley Bearings is a division of Bowman International Limited.

JHB reserves the right to change specifications without prior notice.

SKF Cooper is a registered trademark of SKF Cooper Roller Bearings Co Ltd

Timken SRB is a registered trademark of The Timken Company, North Canton Ohio USA

Craft is a registered trademark of Craft Bearings Company, INC



Sales enquiries: sales@johnhandleybearings.com

Technical support: engineering@johnhandleybearings.com

Product website: www.jhbsplitbearings.com

Company website: www.johnhandleybearings.com

Bowman International Limited: www.bowman.co.uk

Bowman Additive Production: www.bowmanap.com

Telephone number: +44 (0) 1902 898 560

Errors and Omissions Excluded

John Handley Bearings

Units 5 & 6, Building 69

Third Avenue

Pensnett Estate

Kingswinford

West Midlands

DY6 7FD



Designed and Manufactured in the UK