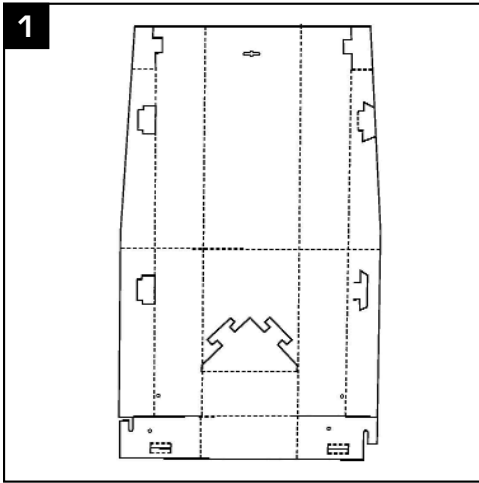
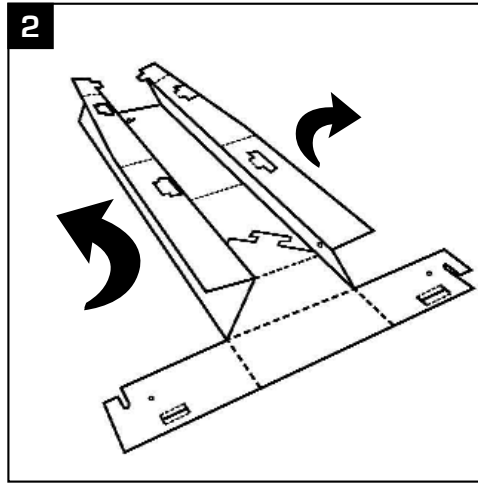


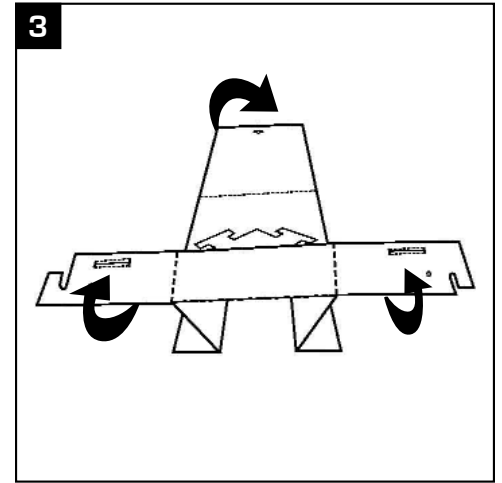
STAND ASSEMBLY AND ATTACHMENT TO TORSO



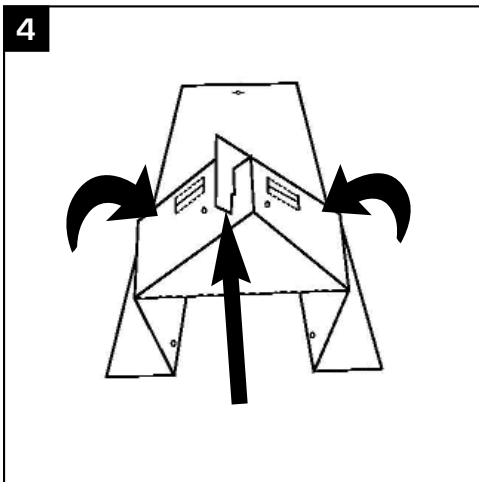
1
Open the sheet of cardboard flat.



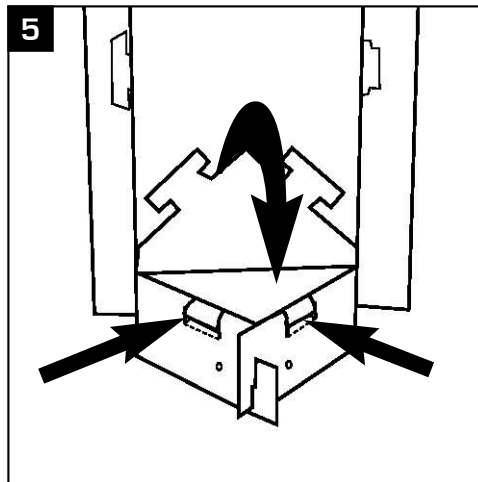
2
Fold in the wings in a Z-like shape as shown.



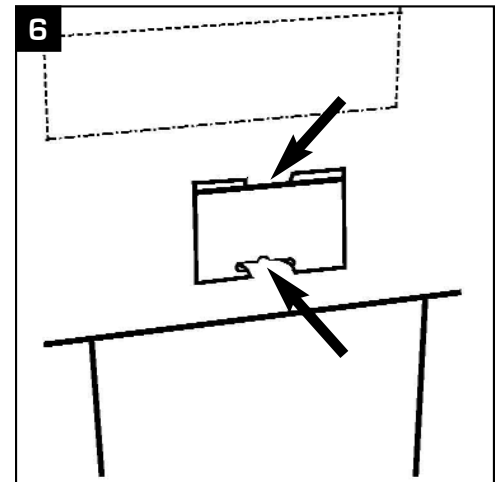
3
Flip the board down. Fold up the bottom flap against the backboard.



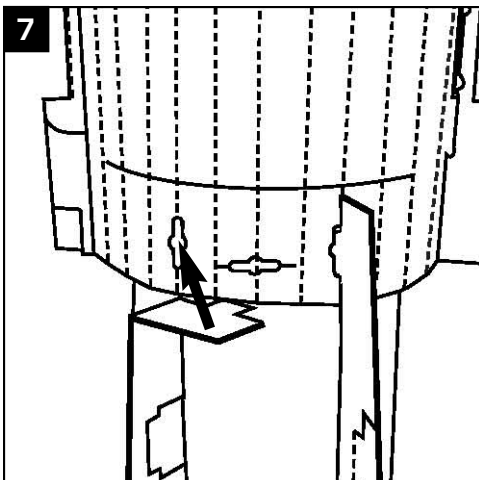
4
Fold the flap's wings up and lock them together using the notches.



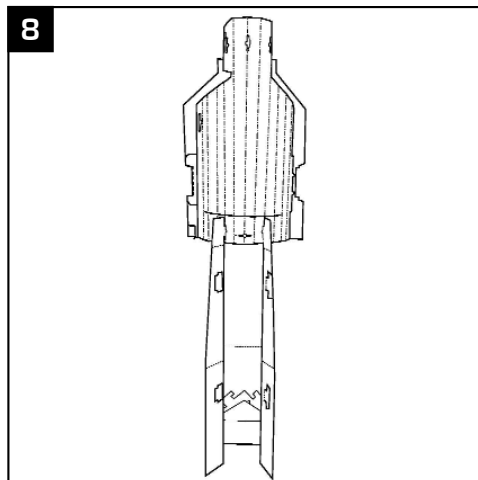
5
Fold down the diamond shelf and lock the 'T' tabs in the slots.



6
Insert the SISU stand in the bottom of the torso and lock the rear tabs.



7
Lock the SISU stand front wings into the torso as shown.

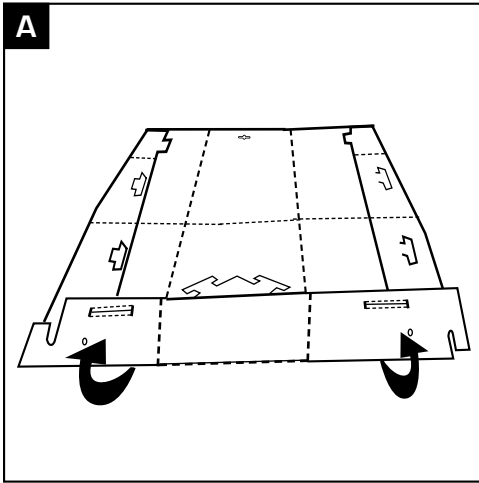


8
Fred is ready to fight!

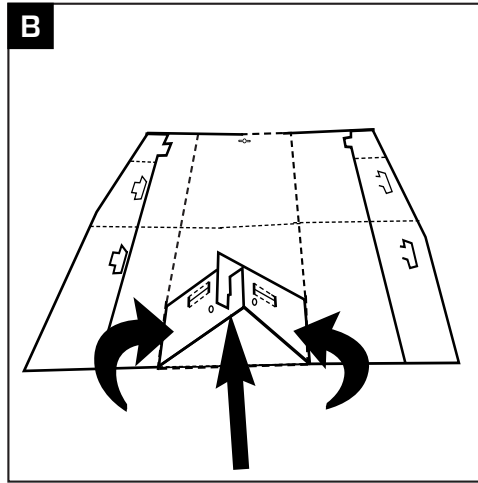


View videos of all Fred known configurations, and download for free Masks and VOICES at www.TARGETNATION.COM

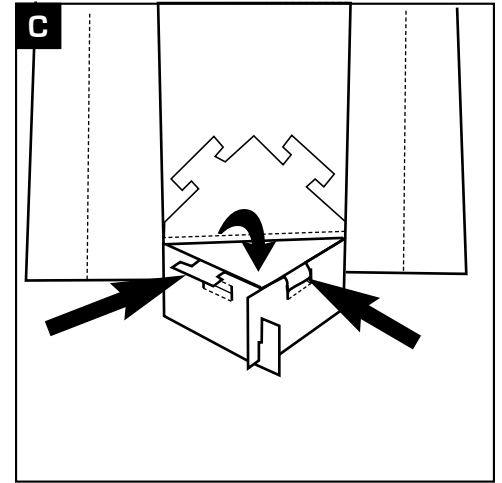
SISU STAND (Legs)



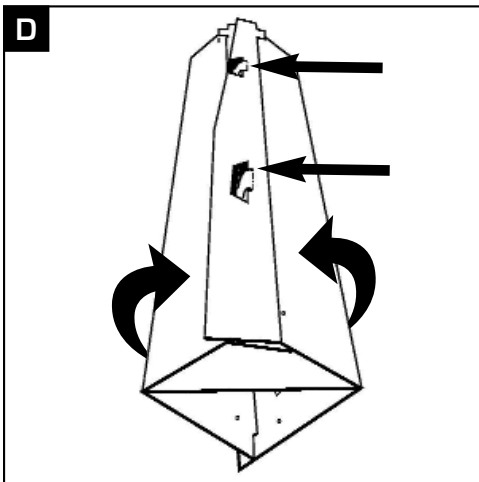
A Lay the cardboard flat. Fold the bottom flap up against the back.



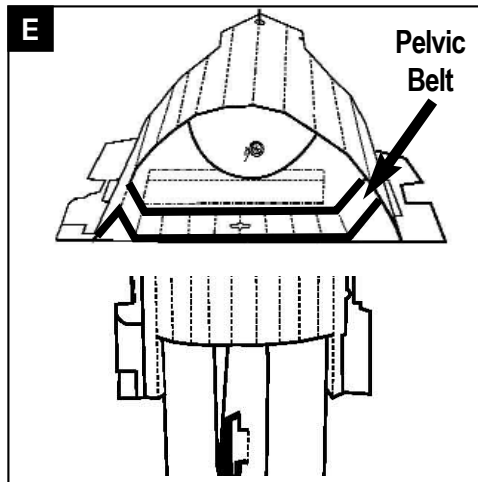
B Fold the flap's wings up and lock them together using the notches.



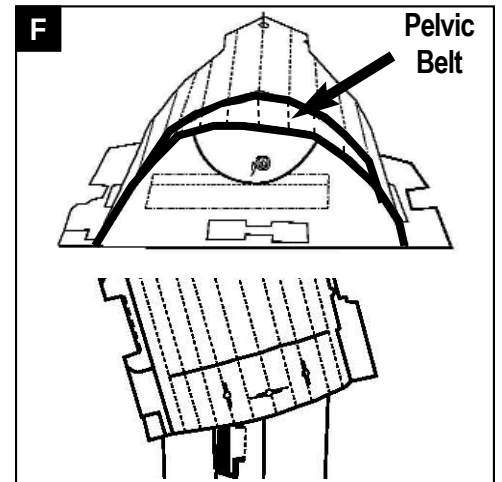
C Fold down the diamond shelf and lock the 'T' tabs in the slots.



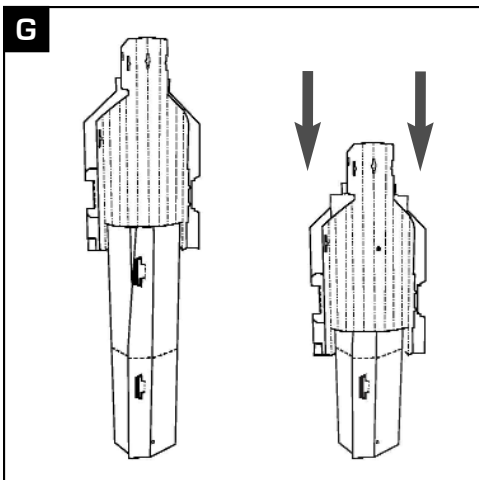
D Flip the stand over. Overlap the wings and lock them with the tabs.



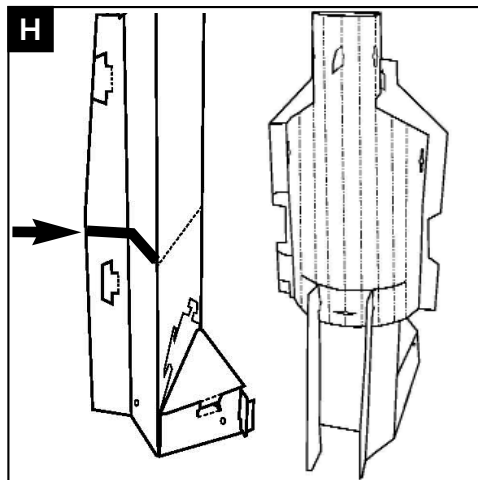
E Straight drop: Fold Pelvic Belt in, insert balloon, mount on SISU.



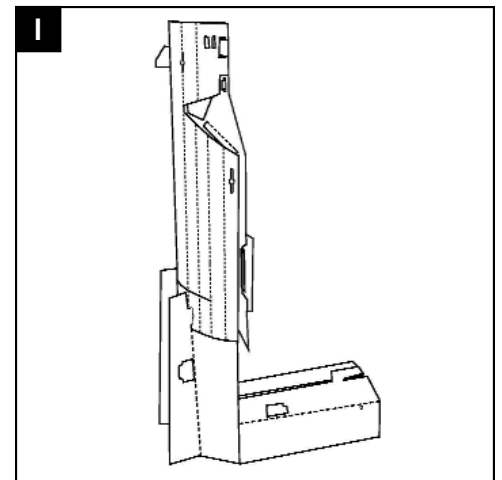
F For leaning drop: pull Pelvic Belt out, insert balloon, mount.



G Torso will drop when balloon is shot.



H Make horizontal cuts on both SISU Wings and fold SISU back.



I Fold the lower SISU Wings up and interlock them by creating notches.