

Goodview Catalog





CONTENTS

- | | | | |
|-----------|--------------------------------------|-----------|--------------------------|
| 01 | Enterprise introduction | 25 | Mobile Digital Signage |
| 03 | Digital Signage | 27 | Video Wall |
| 08 | Ultra-Thin Dual-sided Digital Poster | 29 | Elevator Display |
| 11 | Interactive Flat Panel | 33 | OLED Curved Display |
| 21 | PCAP Touch Screen Signage | 35 | OLED Transparent Display |

Goodview

About us

Company Profile



Company Profile



Stock code: 002841

Guangzhou Shiyuan Electronic Technology Company Limited (hereinafter referred to as CVTE) was established in December 2005 and owns a number of subsidiaries. CVTE is headquartered in Huangpu District, Guangzhou, and has technical service centers in Shanghai, Shenzhen, Hong Kong and overseas. The main business of CVTE is the design, development and sales of LCD main boards and intelligent interactive panel. The intelligent interactive panel is a combination of multi-touch interactive technology, digital signal processing technology and computer software and hardware technology based on the main control technology of LCD. It is an electronic product with independent intellectual property rights that integrates TV, computer, electronic whiteboard and other functions. CVTE has a number of brands, including well-known brands in the industry, such as educational information application tool provider (seewo), and high-efficiency conference platform MAXHUB. Relying on our development experience in display driver, signal processing, power management, human-computer interaction, application developments and system integration, we are committed to elevate richer and more efficient communication experience in electronics. Through technological innovation, we continue to expand and enrich electronics in both the consumer and commercial electronics sector.

As a High-Tech enterprise, CVTE has several comprehensive laboratories and has invested over RMB 10 million for our EMC laboratory. We also attach great importance to the protection of our core technologies. As of June 30, 2020, the company has owned more than 4,400 granted patents and more than 1,000 copyrights of computer software and works. The company ranked 17th on the PCT International Patent Application List in 2018, and ranked among the TOP100 invention patents in the first half of 2019.

The company has become the first batch of national manufacturing double innovation pilot enterprises, national high-tech enterprises, and national intellectual property demonstration enterprises. The company was selected as one of the Fortune 500 in China in 2019, the top 500 in China's manufacturing industry in 2018, the top 100 in China's electronic information industry in 2018, and the top 100 in innovation capabilities in China in 2018. It is also a customs AEO advanced certification company.

2005

Founded in Shanghai in 2005

Shanghai Goodview Electronic Technology Co., Ltd. is affiliated to CVTE group (Stock Code: 002841). It is one of the earliest domestic manufacturers dedicated to the development, production and sales of commercial display products. With two R & D bases in Shanghai and Nanjing, which have a number of invention patents, the company has been named as a high-tech enterprise in Shanghai for more than 10 years and a small giant enterprise cultivation unit in Shanghai.

100+

Hardware & Software engineers

Since its establishment, Goodview has always upheld the business philosophy of "reliable and trustworthy", adhered to the high-quality rule, strengthened the quality system and environmental protection, established a first-class business management system, verified by 1509001:2008 quality system and 15014001:2004 environmental system certification of national authority, ROHS testing, EU CE certification, UL and 3C certification.

With excellent quality, excellent service and continuously improved R & D ability, Goodview has been the biggest display equipment supplier of Focus media for 15 years, and helped Focus Media build the largest elevator media network in the world.

100+

utility model appearance patents

At present, except operating Goodview brand, Goodview has also obtained the operation and sales agency rights of Philips commercial display in the Chinese mainland market.

For the future market, Goodview has independently developed a series of intelligent hardware products with high-end image display, analysis, transmission and processing technologies as the core. Based on six series of products such as commercial LCD display, monitoring display, interactive whiteboard, commercial large screen, elevator IoT display, IoT intelligent terminal, the company has actively laid out the strategy of "intelligent hardware +, Internet +", concentrating on and serving the work of enterprises and institutions such as government, media, finance, automobile, commercial chain, public places, life and consumption scenarios. It provides enterprises with a new marketing solution of "intelligent hardware + Internet + new media" with intelligent display hardware as the entrance, builds a new online and offline marketing platform, connects traditional industries and creates intelligent life.

10+

software copyrights

Enterprise culture



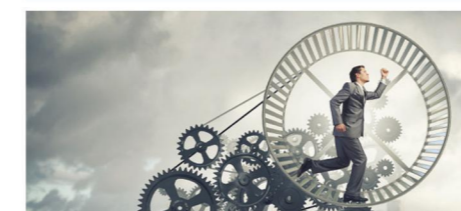
Reliable and trustworthy.



For products: good quality, reliable products.



For users: fulfill commitments, quality service.



Finish what we start.



For business partners: credibility.



For employees: safe harbor, trustworthy family.

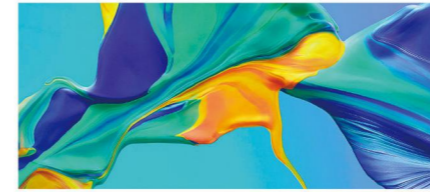


Digital Signage

Digital Signage Series

Sizes: 32,43,49,55,65,75,86

Original IPS commercial screen, 700 cd/m² ultra-high brightness, built-in GTV Intelligent Content Management System, support remote centralized management.



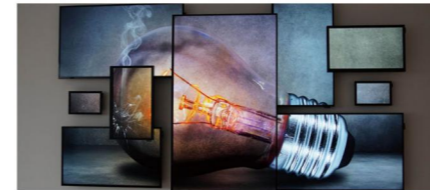
• 450cd/m² brightness & 700 cd/m² brightness.



• Support 7*24 operation.



• GTV Intelligent Content Management System.



• Support both horizontal and vertical display modes, can also be arbitrarily combined.

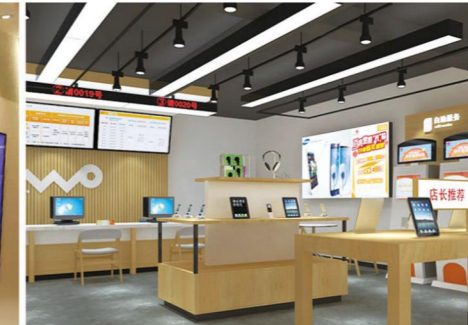


• Simple operation, fast running speed, open code, and most of them are free.



• Dual stereo speaker.

Application



Parameter

Model	M32SAQ	M43SAH	M49SAQ	M55SAH	GM65M2	GM75M2	GM86M3
Panel	31.51 inches LED backlight	42.51 inches LED backlight	48.5 inches LED backlight	54.64 inches LED backlight	65 inches LED backlight	74.52 inches (1892.73mm) LED backlight	85.60 inches (2174.27mm) LED backlight
Active size (mm)	698.4(H) × 392.85(V)	941.2(H) × 529.4(V)	1073.78(H) × 604.0(V)	1209.6(H) × 680.4(V)	1428.48(H) × 803.52(V)	1649.664 (H) × 927.936 (V)	1895 (H) × 1066 (V)
Carton size (mm)	716.2(H) × 415.05 (V) × 45.95(D)	963.6(H) × 557.916 (V) × 46.1(D)	1096.16(H) × 632.5(V) × 59.3(D)	1232(H) × 708.9 (V) × 50.4(D)	1464.48(H) × 839.52(V) × 61.05(D)	1694.24(H) × 971.96(V) × 60.90(D)	1940.0(H) × 1111.0(V) × 62.7(D)
Weight(KG)	net weight: 8.46; gross weight: 10.79	net weight: 11.2; gross weight: 14.1	net weight: 19.4; gross weight: 23.7	net weight: 19.45; gross weight: 24.6	net weight: 27.8; gross weight: 40.2	net weight: 32.8 gross weight: 44.3	net weight: 51.5 gross weight: 65.3
Brightness	400cd/m ²	700cd/m ²	450cd/m ²	530cd/m ²	400cd/m ²	400cd/m ²	350cd/m ²
Response time	8ms	12ms	9ms	8ms	8ms	8ms	8ms
VESA installation	400x200	400x200	200 × 400	200 × 400	400*600/400*400	600x800/600x600	600x600/600x800
CPU		RK 3288W quad-core ARM Cortex A17 (48.1.8GHz Maximum)			quad-core ARM Cortex A53 1.5GHz	quad-core ARM Cortex A53 1.5GHz	RK3399 Six core CPU
Memory		DDR3 2GB			DDR3 2GB	DDR3 2GB	DDR3 4GB
Storage		8GB eMMC			16GB eMMC FLASH	16GB eMMC FLASH	32GB eMMC FLASH + 64G TF card
Operating system		Android 7.1			Android 6.0	Android 6.0	Android 7.1
Speaker		2 × 2W 4Ω			Mid high 2 × 10W 4Ω + Mid bass 15W 8Ω	Mid high 2 × 10W 4Ω + Mid bass 15W 8Ω	Mid high 2 × 10W 4Ω
Multimedia transmission		USB, LAN, WAN				USB, LAN, WAN	
Resolution		1920 × 1080				3840 × 2160	
Aspect ratio		16:9				16:9	
Viewing angle		178°				178°	
Display color		8bit, 16.7 Million colors				8bit, 16.7 Million colors	
Timing		Multi-time timing power on&off				Multi-time timing power on&off	
Multimedia		Video: MPEG1, MPEG2, MPEG4, H.264, WMV, MKV, TS, TS, flv and other mainstream video formats; Audio: MP3 and other audio formats; Picture: JPG, JPEG, BMP, PNG, GIF; Text: txt				Video: MPEG1, MPEG2, MPEG4, H.264, WMV, MKV, TS, TS, flv and other mainstream video formats; Audio: MP3 and other audio formats; Picture: JPG, JPEG, BMP, PNG, GIF; Text: txt	
Play mode		Landscape, Portrait, Playlist				Landscape, Portrait, Playlist	
Hanging mode		Horizontal, Vertical, floor standing				Horizontal, Vertical, floor standing	
Accessories		warranty card x1, remote control x1, certificate x1, power cord x1, Security and environmental protection notes x1, AAA battery x2				warranty card x1, remote control x1, certificate x1, power cord x1, Security and environmental protection notes x1, AAA battery x2	



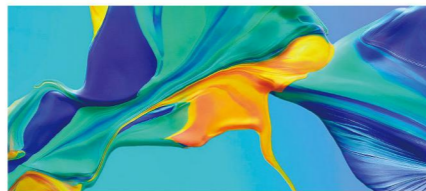
Freestanding Digital Kiosk Series

Sizes:49,55 inches

Have both appearance and quality, the best choice for high-end brand image.



• IPS high brightness commercial panel.



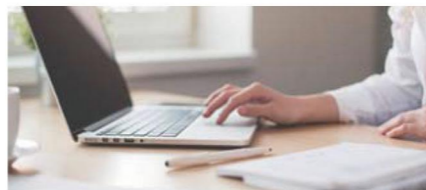
• 450cd/㎡ high brightness.



• GTV Intelligent Content Management System.



• Intelligent split screen.



• Dual stereo speaker.



• Simple operation, fast running speed, open code, and most of them are free.

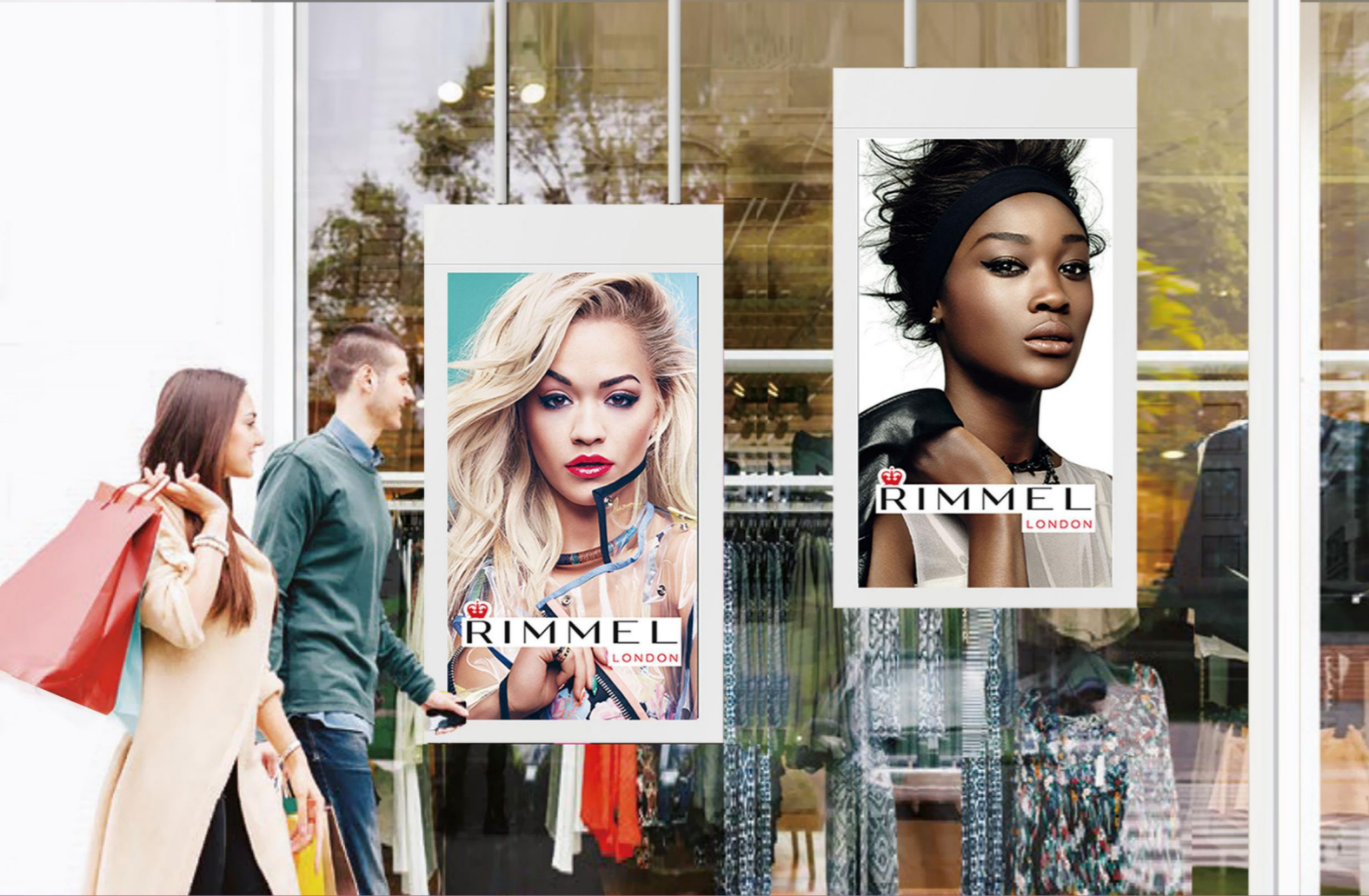


Parameter

Model	L49H10	L55H9
Panel	49 inches LED Backlight	54.64 inches LED Backlight
Active size (mm)	1072.78mm(H) × 603mm(V)	1210.6mm(H) × 681.4mm(V)
Product size (mm)	1870.1(H) × 665.6(V) × 41.2(Top)	1938.5(H) × 744.0(V) × 41.2(Top)
Carton size (mm)	880.6(H) × 1968.1(V) × 270(D)	971 (H) × 2115(V) × 561(D)
Weight	Net weight: 58KG Gross weight:78KG	Net weight: 85 KG Gross weight:97.5KG
Brightness	450cd/㎡	
Response time	8ms	
CPU	quad-core ARM Cortex A17 1.8GHz	
Memory	DDR3 2GB	
Storage	8G eMMC	
Operating system	Android 7.1	
Resolution	1920×1080	
Aspect ratio	16:9	
Viewing angle	178°	
Display color	8bit, 16.7 Million colors	
Speaker	Stereo 2×10W 4Ω	
Play mode	USB, LAN, WAN	
Smart volume	Time-sharing volume	
Timing	Multi-time timing power on&off	
Multimedia transmission	Vertical, Multi-window, Playlist	
Power supply	AC~110-240V (50/60Hz)	
Installation method	Floor-standing	
Management software	GTV, CS frameworkADPE/Ezposter, GTV Information Distribution System	
Backlight life	30000Hrs	
Multimedia	Video: MPEG1、MPEG2、MPEG4、H.264、WMV、MKV、TS、flv and other mainstream video formats; Audio: MP3 and other audio formats, Picture: PG、JPEG、BMP、PNG、GIF; Text: txt; Other: Interactive playback	
Working environment	0~40°C 10%~85%RH No condensation	
Watchdog function	Support	
Accessories	AC power cord x1, M8Gasket × 14, M8Screw × 14, key × 1, remote control × 1, battery × 2	
Certificate		

Application





Ultra-Thin Dual-sided Digital Poster Double-sided signage series

Sizes: 43、55 inches



- High brightness, dual-sided.



- Displaying in high temperature with direct sunlight.



- Support WIFI, Ethernet, USB release.



- Android/Windows.



- Support 7*24 operation.



- Remote content publish such as pictures, videos, texts, etc.



Parameter

Model	D43H1	D55H1
Panel	43 inches LED backlight	54.64 inches LED backlight
Active size (mm)	529.254mm(H) × 940.896mm(V)	680.4mm(H) × 1209.6mm(V)
Product size (mm)	634.6(H) × 1178.3 (V) × 21.6(D)	817.2(H) × 1479.4(V) × 21.6(D)
Carton size (mm)	749.6 (H) × 1295 (V) × 162 (D)	933 (H) × 1596.1 (V) × 162 (D)
Weight	Net weight:16.5KG ; Gross weight:22.5KG	Net weight:26KG ; Gross weight:35KG
Brightness	800/450 cd/m ²	700/450 cd/m ²
Resolution	1920 × 1080	
CPU	RK 3288 quad-core ARM Cortex A17 (1.8GHz Maximum)	
GPU	Mali-T764	
Memory	2GB (Optional 4G storage)	
Storage	8GB	
Display color	16.7 Million	
Display direction	Vertical screen	
Response time	8ms	
Contrast Ratio	1200:1	
Backlight life	30000 hours	
Whole machine color	White (Color:RAL 9003)	
Play mode	Vertical, Multi-window, Playlist	
Watchdog function	support	
Multimedia transmission	USB, LAN, WAN	
Power supply	AC~100-240V (50/60Hz)	
Timing	Multi-time timing power on&off, Port timing automatic switching	
Management software	cs framework, ADPE/Ezposter, GTV Information Distribution System	
Menu language	Chinese, English	
Color temperature	9300K	
Working environment	0~40°C 10%~80%RH No condensation	
Accessories	cable × 1, wifi antenna × 1, Installation Accessories Package × 1, remote control × 1, AAA battery × 2, Warranty Card, certificate × 1, Quick start guide × 1, Security and environmental protection notes1, Installation guidex1	
Certificate		

Application



Global Initiative Intelligent Blockchain Conference Technology.

BCT information security and multi-device information traceability.

One-stop solution for group digital deployment



With a core algorithm

Goodview has the core technology of intelligent blockchain digital conference, which provides eight basic functional modules for users, and at the same time providing scene-based customization subsystems, which can be customized on-demand to realize users' intelligent digital shared office needs.

AI artificial intelligence algorithm.

GTV Intelligent Content Management System

Internal and external distinguished wireless projection technology, have writing screen, projection and welcome interface.

Conference reservation system

Provide free conference reservation system for small and medium-sized enterprises to easily manage conference space resources.

BTC blockchain technology.

Integrated APP function

Internal and external distinguished wireless projection technology, have writing screen, projection and welcome interface.

AI intelligent conference

Local Intelligent AI reading, writing, input and editing, remote conference AI reading, writing, input and editing.

Data learning algorithm.

BTC traceability

Tracking the loss of photographing information in the meeting room, and tracking the printing flow of meeting room information.

Space enabling technology

Using image algorithm to provide personnel information, quantity, location distribution, spatial algorithm.

Video structure method.

Visual multi-dimensional perception technology.

File sharing space

Efficient document management, input and output management, incorporating information into a unified, sound and hierarchical decentralization.

BI data empowerment

Provide basic data intelligence reports. Multi-angle data report can be developed.

Cloud computing storage technology.

Shared Information Security Intelligent Meeting Room



FaceID

Security and control.



APP customization

Domain management and interface application.



Intelligence

Visual multi-dimensional perception technology.



APP customization

Intelligent control of data analysis.

IN anti-virus

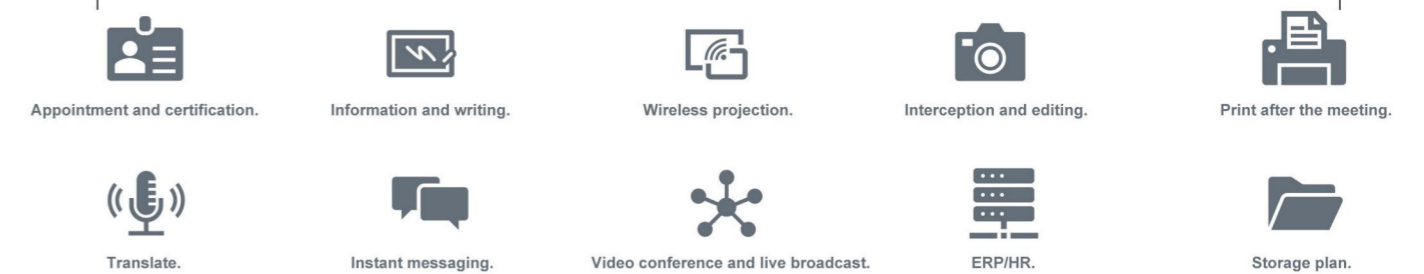
Through wireless and capture card, conversion of image processing technology, hardware block virus intrusion. Through wireless and acquisition card, transform image processing technology, hardware barrier virus intrusion.



OUT blockchain

Using blockchain technology to solve the security traceability of screen, mobile phone, and printed information.

Editable customer application layer





Interactive Flat Panel Advanced Series

Sizes: 55, 65, 75, 86, 98 inches

It covers three necessary meeting functions of writing, demonstration, and collaboration, which can break the tedious bondage of traditional meetings, realize the wireless connection easily between end to end.



- Wireless pass, no wires limit.



- Infrared touch writing (20 touch points).



- Built-in cloud meeting software, no need to deploy, start the video conference immediately.



- Multi-machine in one, understand what you need.



- Multi-screen interaction, two-way mutual control, computer and tablet can be controlled by one click.



- Large memory, stronger performance, stable operation.

Parameter

Model	GM55S4	GM65S4	GM75S4	GM86S4	GM98S4
Panel	54.64inches LED backlight	65inches LED backlight	74.52 inches LED backlight	85.60inches LED backlight	97.52inches LED backlight
Active size (mm)	1209(H)x680(V)	1428.48(H)x803.52(V)	1649.664 (H)x927.936 (V)	1895.04 (H)x1056.96 (V)	2158.85 (H)x1214.35 (V)
Product size (mm)	1263.42(H)x739.62(V)x98.02(D)	1485.22(H)x861.22(V)x78.10(D)	1718.24(H)x996.24 (V)x78.1 (D)	1976.9(H)x1151.75(V) X 100.224 (D)	2229.2(H) X1285.2(V)x99.1(D)
Gross weight (KG)	36.5	49.8	69.5	95.25	134.7
Net weight (KG)	28.0	40.0	56.8	72.75	105.5
Color	Black				
OSD language	Chinese, English				
Sound power	Mid-treble 2×10W 4Ω+47.Heavy bass15W 8Ω				
Display direction	Horizontal screen				
Play mode	Horizontal play				
Multimedia transmission	USB				
Timing	Timing power on&off				
Touch type	Infrared touch 20 points				
Touch resolution	32767(W)×32767(D)				
Touch precision	52.±1mm (over 90% touching area)				
Response time	<15ms				
Input mode	Finger, PCAP Pen and other opaque objects				
CPU	ARM Cortex A53*2+A73*2 1.5GHz				
GPU	ARM Mali-G51450MHz				
Memory	DDR4 4GB				
Storage	32GB eMMC FLASH				
Operating system	Android8.0 Windows 10(OPS optional)				
Multimedia	Picture: *.jpg, *.bmp, *.png; audio: *.mp3; Text: *.txt multimedia: *.avi,*.mpg,*.dat, *.vob, *.div, *.mov, *.mkv, *.rm, *.rmvb, *.mp4, *.mjpeg, *.ts, *.trp, *.wmv, *.asf, *.flv				
VESA installation	400x200	400x400/400x600	600x600/600x800	800x600	600x800
Installation method	Horizontal and vertical mount, freestanding mount				
Accessories	Remote control×1, AC power cable(standard)×1, USB extensive cable×1, Intelligent writing pen×1, Magnetic writing pen×1 AAA battery×3, Warranty Card×1, Security and environmental protection notes×1, certificate×1, Screencast donglex1				

Certificate

Application





Interactive Flat Panel GM**L1 Series

Sizes:65,75,86 inches



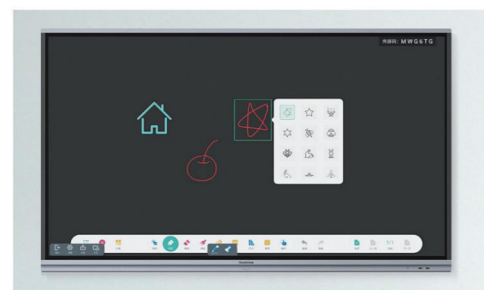
• Glass and liquid crystal panel without gap.



• Accurate restoration of authentic hand-writing.



• Wireless pass, no wires limit.



• Tiny gadgets for working more efficiently.



• Independent wireless module, rich application interface.



• Real sound, real visuality.



Parameter

Model	GM65L1	GM75L1	GM86L1
Panel	65 inches DLED backlight	75 inches DLED backlight	86 inches DLED backlight
Active size(mm)	1428.48 (H) × 803.52 (V)	1649.664 (H) × 927.936 (V)	1895.04 (H) × 1065.96 (V)
Product size (mm)	1489 × 897 × 87	1710 × 1020 × 89	1957 × 1160 × 88
Gross weight (KG)	53.6	69.75	96.75
Net weight (KG)	39.65	53.35	68.85
Brightness	380cd/m ²		
Pixels	3840 × 2160		
Color	Top&Bottom Grey, Left&Right Black		
OSD language	Chinese, English		
Sound power	Mid-treble 2 × 12W		
Display direction	Horizontal screen		
Play mode	Horizontal play		
Multimedia transmission	USB		
Display color	1.07G colors		
Contrast Ratio	1200:1		
Timing	Timing power on&off		
CPU	Dual Core A73+Dual CoreA53		
GPU	Quad Core Mali-G51		
Memory	DDR4 4GB		
Storage	32GB eMMC FLASH		
Operating system	Android8.0 Windows 10(PC optional)		
Touch type	Infrared touch		
Touch point	20 Points		
Touch precision	Over 90% touching area		
Response time	<10ms		
Multimedia	Picture: *.jpg, *.bmp, *.png; audio: *.mp3;Text: *.txt Multimedia: *.avi,*.mpg,*.dat,*.vob,*.div,*.mov,*.mkv,*.rm,*.rmvb,*.mp4,*.mjpeg,*.ts,*.trp,*.wmv,*.asf,*.flv		
VESA installation	600 × 400	800 × 400	800 × 600
Installation method	Hanging, Floor Standing		
Accessories	AC power caxelx1 (3 meters); Touch pen × 2; Hanging bracket × 1; Using guide × 1		
Certificate			

Application



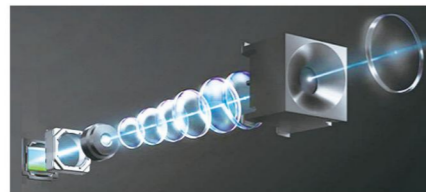


Interactive Flat Panel GM**H1 Series

Sizes: 65, 75, 86 inches



- Wireless pass, no wires limit.



- Built-in cloud meeting software, no need to deploy, start the video conference immediately.



- Accurate restoration of authentic handwriting.



- Built-in MindLinker videoconferencing software.



- Large and small screen interaction, support mobile phone reverse control.



- 8 meters collecting sound.

Parameter

Model	GM65H1	GM75H1	GM86H1
Panel	65 inches DLED backlight	75 inches DLED backlight	86 inches DLED backlight
Active size (mm)	1428.48 (H) × 803.52 (V)	1649.664 (H) × 927.936 (V)	1895.04 (H) × 1065.96 (V)
Product size (mm)	1488 × 897 × 86	1709 × 1030 × 86	1957 × 1160 × 86
Gross weight (KG)	48.55	67.2	86.6
Net weight (KG)	39.65	50.2	64.6
Brightness		380cd/m2	
Pixels		3840 × 2160	
Color		Grey	
OSD language		Chinese, English	
Sound power		2 × 10W + 20W	
Display direction		Horizontal screen	
Multimedia transmission		USB	
Display color		1.07G colors	
Contrast Ratio		1200:1	
Response time		8ms	
Speaker		6 Array, 8 meters collecting sound	
Color gamut		90%	
Timing		Timing power on&off	
Storage		32GB eMMC FLASH	
Operating system		Android9.0 Windows 10(PC optional)	
Touch type		Infrared touch	
Touch point		20 points	
Touch precision		Over 90% touching area	
Camera		1200 Mega pixe	
Response time		<10ms	
Multimedia		Picture: *.jpg, *.bmp, *.png; audio: *.mp3; Text: *.txt multimedia: *.avi, *.mpg, *.dat, *.vob, *.div, *.mov, *.mkv, *.rm, *.rmvb, *.mp4, *.mjpeg, *.ts, *.trp, *.wmv, *.asf, *.flv	
VESA installation	600 × 400	800 × 400	800 × 600
Installation method		Hanging, Floor Standing	
Accessories		AC power cable × 1 (3 meters); Touch pen × 2; Hanging bracket × 1; Using guide × 1; Warranty Card × 1.	
Certificate			CE, RoHS, FCC, CCC

Application





LED Display Terminal LED conference screen

sizes:110,138,165,220

It is applicable to various large scenes such as conference rooms, exhibition halls, and lecture halls, bringing an outstanding visual experience, making the presentation more flexible and colorful.



- Meet the needs of large conference.



- High precision without seam, free adjustment of brightness.



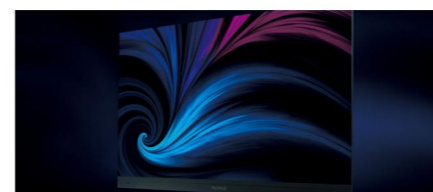
- Ultra-wide viewing angle, 160°super wide viewing angle.



- All-in-one function design, stable and reliable.



- Thin and light structure, saving space.



- Adapt to a variety of modern conference scenes.



Parameter

Model	GM11019W1	GM13819W1	GM16519W1	GM20019W1
Size	110 Inch	138 Inch	165 Inch	220 Inch
Active size	2440×1372mm	3050×1715mm	3660×2058mm	4880×2745mm
Module Size	670×520×165mm	670*520*165mm	670*520*165mm	670*520*165mm
Carton Package	1500×235×700mm	1840*235*700mm	1160×235×700mm	1500*235*700mm
Electricity consumption	500W	800W	1150W	2000W
Total Weight	96kg (Brackets not included)	140kg (Brackets not included)	190kg (Brackets not included)	330kg(Brackets not included)
Resolution	1280×720	1600×900	1920×1080	1920×1080
Pixel pitch	1.9mm	1.9mm	1.9mm	2.5mm
Aspect Ratio	16:9			
Suggested watching distance	≥3.8m、≥3.8m、≥3.8m、≥5.0m			
Maintaining Way	Front maintaining			
Installation method	Bracket, Wall-hanging			
Timing	Multi-time timing power on&off			
Brightness	0-550nit,100-550nit,100-550nit,100-550nit			
CPU	Dual Cortex-A72+Quad Cortex-A53, frequency 2.0GHz			
Memory	4GB			
Storage	32GB			
Operating system	Android 7.1			
Multimedia	Support video formats like MPEG1, MPEG2,MPEG1,MPEG2,MPEG4,WMV,MKV,TS,FLV;Support audio formats like MP3, etc; Support picture format like JPG, JPEG, BMP, PNG, GIF, etc.			
Visible Angle	Horizontal 160°, Vertical 160°			
Contrast Ratio	3000:1			
Grayscale	13-16bit			
Refresh Rate	1920-3840Hz			
Color Temp	6500-9300K			
LED lifetime	≥100,000h			
Wall hanging Components Package	1860*175*140mm			
Bracket component	1930*280*200mm			
Accessories	Remote controlx1,Screenast donglex1,Front Maintenance toolx1,Spare modulex1,Wall-hanging component (Optional)x1,Bracket (Optional) x1			
Certificate	©			

Application





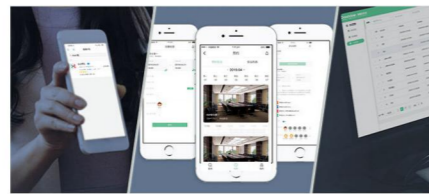
Conference doorplate

PF10T1 series

Has an intelligent reminder function, easy to schedule meeting and has clear information. Intelligent split-screen technology supports the free arrangement and combination of any form of content such as videos, pictures, texts, etc. on the screen.



- Has an intelligent reminder function, easy to schedule meeting.



- Support multi-platform direct access.



- Built-in meeting reservation system.



- Cloud interconnection to schedule meetings anytime.



- Automatic message notification.

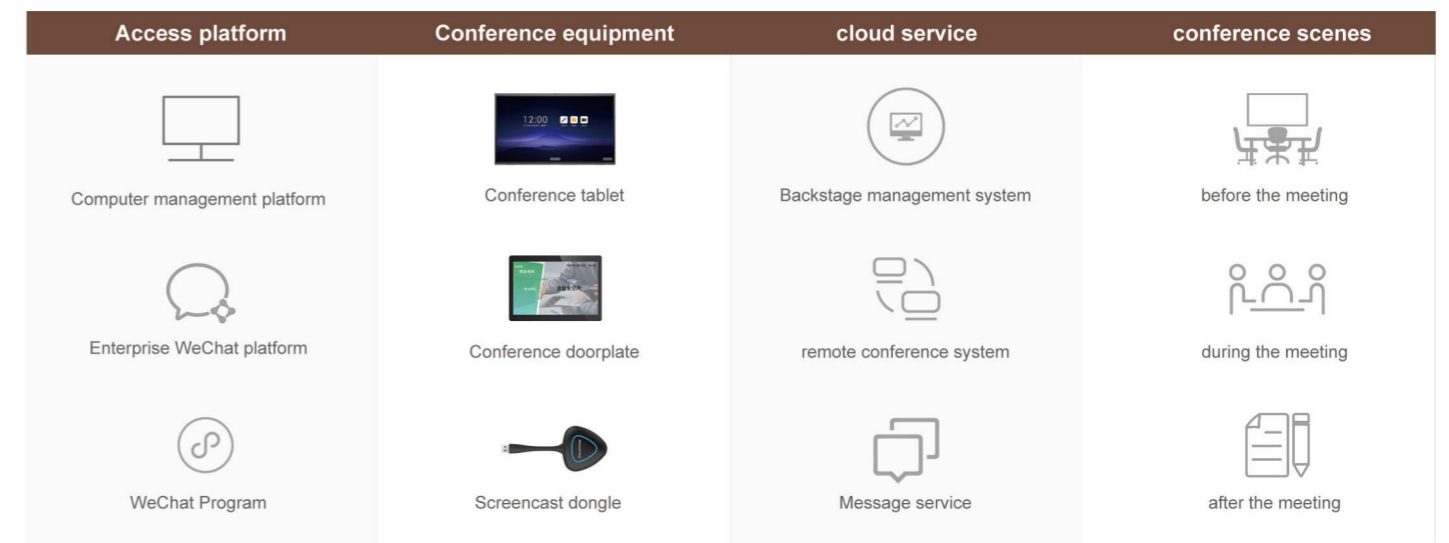


- Has an intelligent reminder function and clear information.

Parameter

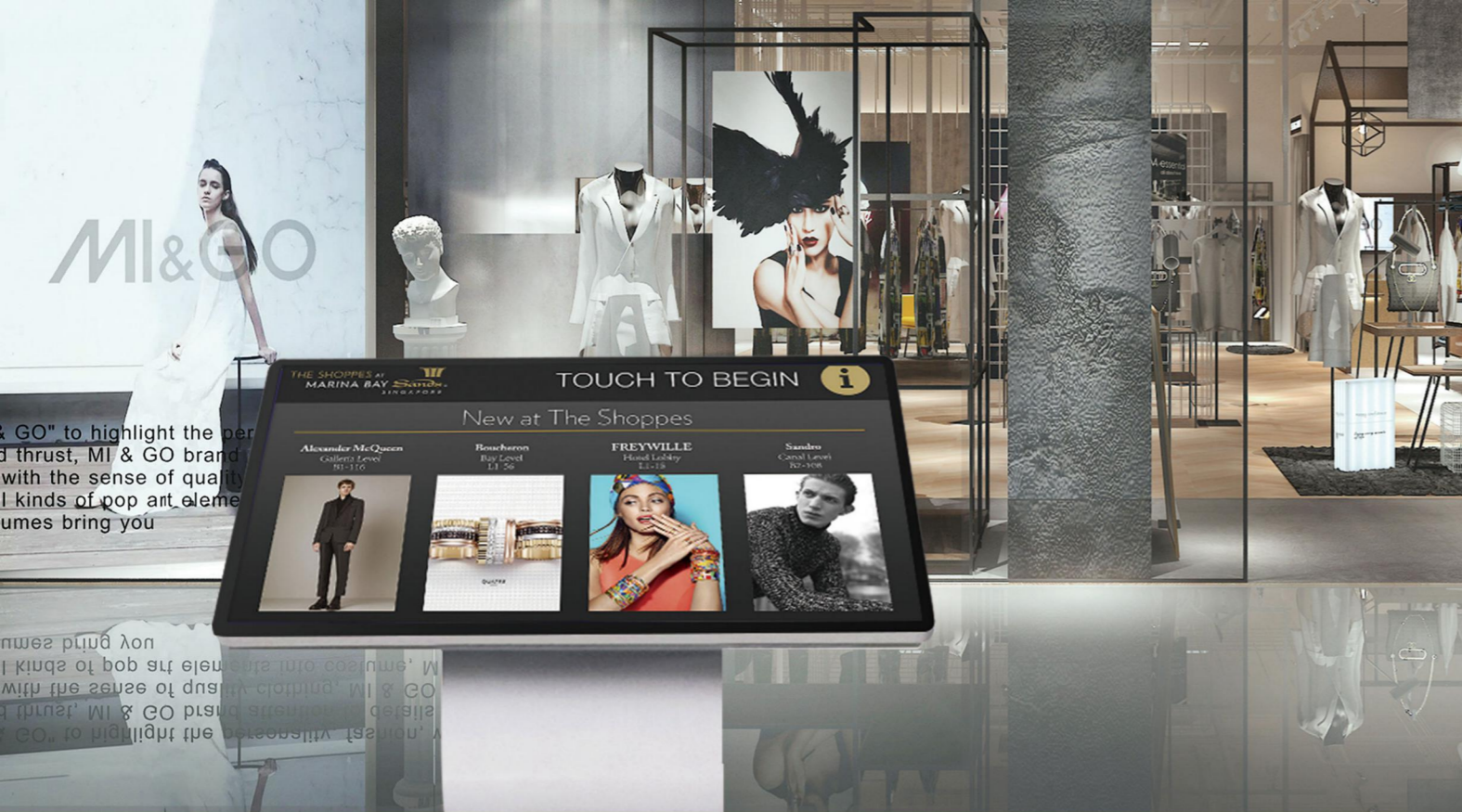
Model	PF10T1
Panel	10.1inches LED Backlight
Product size	239.6(H)×168.9(V)×26.8(D)
Active size	216.58 (H) ×135.36(V)
gross weight	1.1
Net weight	0.56
Display direction	Horizontal screen
OSD language	Chinese,English
Display color	16.7 Million colors
Panel Luminance	250cd/m2
Response time	25ms
CPU	quad-core ARM Cortex-A7 1.3GHz
Memory	1G
Storage	8G
Operating system	Android 7.1
Touch Type	Capacitive
Touch Point	10 Point
Input mode	Finger,capacitive stylus
VESA standard	50×50
Installation method	Hanging bracket installation
Accessories	10.1 inch hanging bracketx1,Power adapterx1

The whole process of the meeting

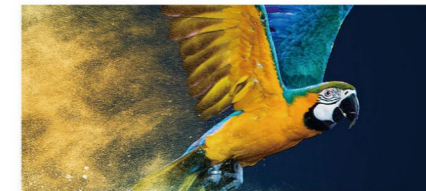


Application





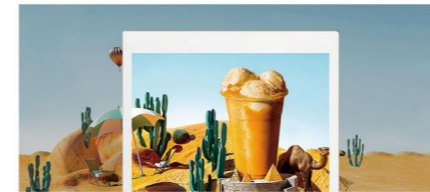
- 10-point capacitive touch, quick response, accurate touch point.



- Original IPS commercial panel.



- 24/7 operation without interruption.



- High-end configuration, fully compatible.



- Intelligent split screen.



- Built in EZTOUCH interactive content production and publishing software.

Application



PCAP Touchscreen Signage

Sizes:22,27,32,43,49,55 inches

Parameter

Model	TC22H1	TC27H1	TC32H1	TC43H1	TC49H1	TC55H1
Panel	22 inches LED backlight	27 inches LED backlight	32 inches LED backlight	42.51 inches LED backlight	48.5 inches LED backlight	54.64 inches LED backlight
Active size (mm)	476.064(H) × 267.786 (V)	596.89(H) × 335.31(V)	697.4(H) × 391.9 (V)	941.2(H) × 529.4(V)	1072.8 (H) × 603.0 (V)	1208.6 (H) × 679.4(V)
Product size (mm)	529.6(H) × 321(V) × 42.3(D)	650.09(H) × 388.51(V) × 45.55(D)	757.8 (H) × 452.3 (V) × 49.3 (D)	997.6(H) × 585.8 (V) × 50.6(D)	1135.20(H) × 665.4 (V) × 63.2(D)	1275 (H) × 745.8 (V) × 56.8 (D)
Carton size (mm)	439.5 (H) × 690 (V) × 133.5 (D)	809 (H) × 507.5 (V) × 136.6 (D)	560.5 (H) × 868 (V) × 165 (D)	688.9 (H) × 1100 (V) × 164.2 (D)	818 (H) × 1279.2 (V) × 199 (D)	864.5 (H) × 1417 (V) × 193.7 (D)
Weight	Gross weight:6.0KG Net weight:7.7KG	Gross weight:8.8 KG Net weight:10.2KG	Gross weight:10.1KG Net weight:13KG	Gross weight:16.7KG Net weight:20.3KG	Gross weight:27.1KG Net weight:32.79KG	Gross weight:29.4 KG Net weight:36.9KG
Brightness	250 cd/m ²	250cd/m ²	400 cd/m ²	450 cd/m ²	450 cd/m ²	450 cd/m ²
Response time	14 ms	14 ms	8 ms	8ms	12 ms	8ms
VESA installation		400 × 200		400x200	400x200/400x400	400x200
CPU		RK 3288 quad-core ARM Cortex A17 (1.8GHz Maximum)			RK 3288 quad-core ARM Cortex A17 (1.8GHz Maximum)	
Memory		DDR3 2GB			DDR3 2GB	
Storage		8G eMMC			8G eMMC	
Operating system		Android7.1			Android7.1	
Resolution		1920 × 1080			1920 × 1080	
Aspect Ratio		16: 9			16: 9	
Display color		16.7 Million colors			16.7 Million colors	
Sound power		2 × 2W 4Ω			2 × 2W 4Ω	
Play mode		Horizontal/Vertical/Play List			Horizontal/Vertical/Play List	
Hanging mode		Horizontal and vertical mount, freestanding mount			Horizontal and vertical mount, freestanding mount	
Touch type		Capacitive			Capacitive	
Touch point		10 points			10 pointstt	
Touch precision		2.5mm ± 10%			2.5mm ± 10%	
Input mode		Finger, capacitive stylus			Finger, capacitive stylus	
Multimedia		Video:MPEG1, MPEG2, MPEG4, H.264, WMV,MKV,TS,TS, flv and other mainstream video formats; Audio:MP3 and other audio formats; Picture:JPG,JPEG,BMP,PNG,GIF;Text:txt			Video:MPEG1, MPEG2, MPEG4, H.264, WMV,MKV,TS,TS, flv and other mainstream video formats; Audio:MP3 and other audio formats; Picture:JPG,JPEG,BMP,PNG,GIF;Text:txt	
Multimedia transmission		USB,LAN, WAN			USB,LAN, WAN	
Timing		Multi-time timing power on&off			Multi-time timing power on&off	
Accessories		warranty card × 1, certificate × 1, Quick start guide × 1, AC power cable (standard) × 1, wifi antenna × 1, battery × 2, Security and environmental protection notes × 1, Hanging bracket × 1			warranty card × 1, certificate × 1, Quick start guide × 1, AC power cable (standard) × 1, wifi antenna × 1, battery × 2, Security and environmental protection notes × 1, Dual male usb × 1	



PCAP Touch Freestanding Kiosk Series

Freestanding Digital Kiosk Series

Sizes:49,55 inches



- 10 point capacitive touch, high precision capacitive touch.



- IPS high brightness commercial panel.



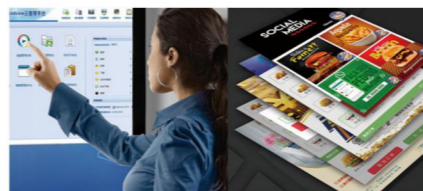
- Support 7*24 operation.



- High end configuration, full compatibility.



- One-key lock screen, safe and controllable.



- Built in EZTOUCH interactive content production and publishing software.



Parameter

Model	L49H10C	L55H10C
Panel	49 inches LED backlight	55 inches LED backlight
Active size (mm)	1072.78mm(H) × 603mm(V)	1210.6mm(H) × 681.4mm(V)
Product size (mm)	1870.1(H) × 665.6(V) × 41.2(Top)	1938.5(H) × 744.0(V) × 41.2(Top)
Carton size (mm)	880.6 (H) × 1968.1 (V) × 270 (D)	961 (H) × 2035 (V) × 270 (D)
Weight (KG)	Net weight:58; Gross weight:78	Net weigh:69.5; Gross weight:93KG
Brightness		450 cd/m ²
Response time		8ms
CPU		Quad-core ARM Cortex A17 1.8GHz
Memory		DDR3 2GB
Storage		8G eMMC
Operating system		Android 7.1
Touch type		Capacitive
Touch point		10 point
Touch box response time		<15ms
Input mode		Finger, capacitive stylus
Display direction		Vertical screen
sound power		Stereo 2×10W 4Ω
Play mode		USB, LAN, WAN
Smart volume		Time-sharing volume
Timing		Multi-time timing power on&off
Multimedia transmission		Horizontal, Play List, Vertical
Power supply		AC~110-240V (50/60Hz)
Viewing angle		Full viewing angle (R/L 89 (Min.), U/D 89 (Min.)
Installation method		Floor-standing
Management software		GTV, CS framework, ADPE, Ezposter, GTV Information Distribution System
Backlight life		30000 hours
multimedia		Picture*.jpg, *.jpeg, *.gif, *.bmp, *.png; Audio*.mp3; Text*.txt; video*.MPEG+1, MPEG2, MPEG4, WMV, MKV, AVI, TS, flv Support video formats like
Working environment		0~40°C 10%~85%RH No condensation
Watchdog function		Support
Accessories		AC power cable(standard)x1, M8 gasket×14, M8 screw×14, Key×1, remote control×1; battery×2
Certificate		CE, FCC, RoHS, CCC

Application





Mobile signage

Mobile Battery Signage Series

Sizes: 43

Eye-catching products, new advertising solutions to create more value. Built-in lithium battery, anti-glare, automatically switch different advertising content on a regular basis to achieve accurate marketing promotion..



• Free and unfettered.



• Support 7*24 operation.



• TIP65 waterproof protection.



• 700cd/m² high brightness.



• GTV Intelligent Content Management System.



• Dual stereo surround double stereo.



Parameter

Model	PF43HL1
Panel	42.51inches (1079.87 mm) LED backlight
Brightness	700 cd/m ²
Active size (mm)	941.184 (H) × 529.416(V)
Product size (mm)	604.7(H) × 1194.9(V) × 478(D)
Carton size (mm)	1430(H) × 753(V) × 643(D)
Weight	Net weight:38.1KG Gross weight53.9KG (with pallet)
Installation method	Floor-standing
Contrast Ratio	1000: 1
Power Consumption	73 Watt (Max)
Audio and video interface	Audio: *.mp3; Support video formats like: MPEG1, MPEG2, MPEG4, WMV, MKV, AVI, TS, flv
Backlight life	30000 hours
Color	White
Resolution	1920×1080
Aspect Ratio	9:16
Viewing angle	178°
Color	8bit, 16.7 Million colors
CPU	Quad-core ARM Cortex A17 (1.8GHz)
Power supply	AC~100-240V
Hanging mode	Floor-standing
Response time	12 ms
Viewing angle	Full viewing angle (R/L89 (Min.), U/D 89 (Min.)
Menu language	Chinese,English
Color temperature	10000K
Working environment	0~40°C 10%~80%RH No condensation
Accessories	Lithium battery charger×1, remote control×1, AAA battery×2, Power cord (American standard, British standard, European standard)×3
Certificate	CE FCC

Application





Video wall

Sizes: 55

HD video wall, combine creativity with your heart. The pictures are exquisite and the details are outstanding. It can transmit the precise information and provides the immersive visual experience to the customers.



- High brightness, the color is exquisite and beautiful.



- Dynamic video wall, super-imaginative visual impact.



- Double-sided splicing, 3.5mm is optional.



- Intelligent split-screen, multi-screen linkage and split-screen, display arbitrary switching.



- Support 7*24 operation.



- Provide door-to-door installation service.



Parameter

Model	PD55YS11
Panel	55 inches LED backlight
Brightness	500 cd/m ²
Active size (mm)	1209.6(W)x680.4(H)mm
Product size (mm)	1213.5(H)×684.3(V)×89.28(D)
Carton size (mm)	827 (H) × 1392 (V) × 281 (D)
Weight	Net weight: 15.95KG Gross weight: 37.97KG
VESA installation	600×400&600*300
Contrast Ratio	4000:1
Power Consumption	220W (MAX)
Backlight life	50000 hours
Color	Black
Resolution	1920×1080
Aspect Ratio	16:9
Viewing angle	178°
Color depth	8bit, 16.7 Million
Color gamut	70%
Hanging mode	landscape、portrait
Response time	8ms
Viewing angle	Full viewing angle (R/L 89 (Min.), U/D 89 (Min.)
Menu language	Chinese, English
Color temperature	9300K
Power supply	AC~100-240V (50/60Hz)
Audio and video interface	Composite-Video×1, VGA IN×1, DVI IN×1, HDMI IN×1
Working environment	0~40°C 10% ~ 85%RH No condensation
Storage environment	-10~60°C 10% ~ 75%RH No condensation
Accessories	AC power line x 1(standard)×1, Remote control×1, External remote control head ×1, Cable×1, Battery×2, Warranty card×1
Certificate	CCC

Application





Elevator Display

Sizes: 19,22,32 inches

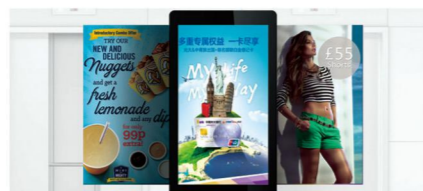


Parameter

Model	PF19EH7	PF32EH6
Panel	18.5 +10.1 inches LED backlight	31.51+18.5 inches LED backlight
Product size (mm)	380.5 (V) ×767 (H) ×80 (D)	1185 (H) ×630 (V) ×195 (D)
Module package size(mm)	274 (V) ×640 (H) ×28 (D)	1040(H)×470(V)×50(D)
Carton Package size(mm)	409.8(H) ×230.4(V) /135.36(H) ×216.58(V)	698.4(H) × 392.85 (V)/ 409.8(H) × 230.4(V)
Weight	Net weight:3.5kg Gross weight: 5kg	Net weight:18.2kg Gross weight: 21.5kg
Brightness	250 cd/m ²	350 cd/m ²
Resolution	768×1366 (Sub-screen) /1280×800 (Main screen)	1080×1920/1366×768
Other ports	USB*3、RJ45*1、WiFi (2.4G) *1、DC IN(12V)*1、RS232*1、4G*1 (Optional)	LAN*1、WiFi*1、USB*1、SIM Card、4G
CPU		Quad core ARM Cortex A17 (1.8GHz)
GPU		Quad core ARM Mail-764
Memory		2GB DDR3
Storage		8G eMMC
Display color		16.7 Million colors
Camera (optional)		(PH19EH7 optional) 200 Mega pixel
VESA standard		Wall mounting
Color		White, black, golden(Available in three colors)
Menu language		Chinese
Backlight life		30000H
Watchdog function		Support
Hanging mode		Vertical screen (with hanging bracket)
Power supply		DC 12V
Working environment		0~40°C 10%~85%RH No condensation
Accessories	PF19EH7: Remote control (40 sets with one)x1, AAA battery (40 sets with two), Screwdriver (40 sets with one)x1, adapter×1 (SUN-1200400-0394) ,Hanging bracket×1, Screw×1,Certificate ×1,warranty card×1	
Certificate	(PF19EH7) ©	



- Condition monitoring, One-click Alarm.



- Built-in multi-industry templates, WYSIWYG get rid of complex operations.



- Support remote audio and video publishing, regular automatic switching of different advertising content.



- Mainstream RK3288W chip.

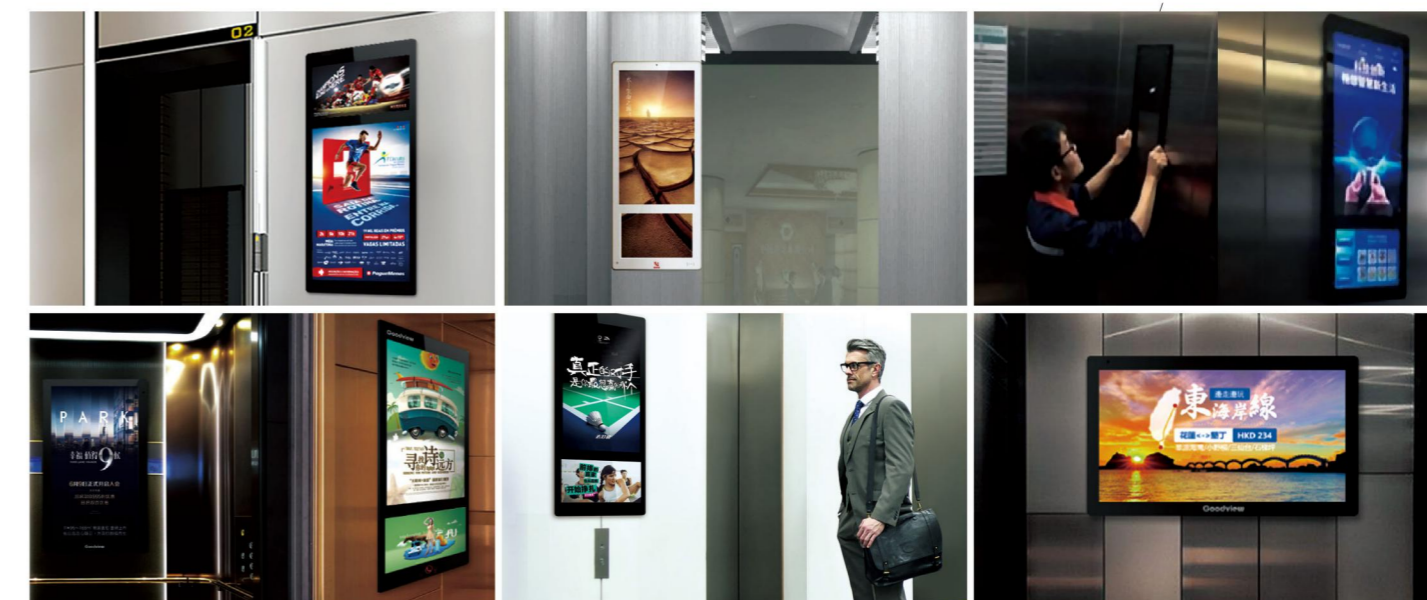


- Support customized NFC function.



- Media and property operate on the same platform.

Application





Elevator Floor Display Module

Sizes: 8.4, 10.4, 12.1, 15, 19 inches

It has the perfect combination of advanced industrial control technology and elevator display technology, all-metal fuselage to avoid receiving electromagnetic interference in public places, sliding hole design flexibility, easy to install.



- Support adapting multiple protocols.



- Android system.



- Support remote audio and video publishing.



- The system built-in a variety of industry display templates.



- Support 7*24 operation.



- Media and property operate on the same platform.



Parameter

Model	K8S3	K10S3	K12S3	K15S3
Panel	8.4 inches LED backlight	10.4 inches LED backlight	12.1 inches LED backlight	15 inches LED backlight
Display direction	Horizontal/Vertical screen			
Brightness	350cd/m ²			
Response time	16 ms			
Resolution	1024×768			
CPU	Rockchip PX30, quad-core ARM Cortex A35			
GPU	quad-core ARM G31-2EE			
Memory	DDR3 2G			
Storage	8G eMMC			
Operating system	Android8.1			
Display color	6bit, 16.7M colors			
OSD language	Chinese, English			
Play mode	Horizontal screen, Vertical screen, Customize the display direction horizontally and vertically, Playlist			
Smart volume	Time-sharing volume			
Timing	Multi-time timing power on&off			
Management software	C/S CS framework ,ADPE/Ezposter Ezposter, GTV Information Distribution System			
Multimedia transmission	USB, LAN, WAN			
Play mode	Horizontal screen, Vertical screen, Customize the display direction horizontally and vertically, Playlist			
Backlight life	30000Hrs			
Power supply	DC12-24V			
Working environment	0~40°C 10%~85%RH No condensation			
Accessories	Certificate×1, Infrared remote control receiving line×1, Remote control×1, AAA battery×2, warranty card×1, Industrial plug connector×2, 56.2.4G suction cup antenna×1, adapter (12V 3A) ×1, Acrylic panel×1			

Application





OLED Curved Display

Sizes: 55

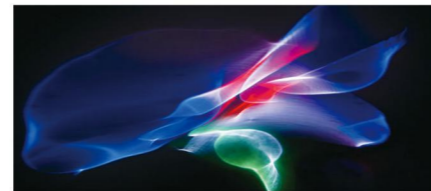
OLED has features of paper slim and flexibility. Integrated products, can be perfect into the environment. Perfect color reproduction, elegant curved design, attract all attention.



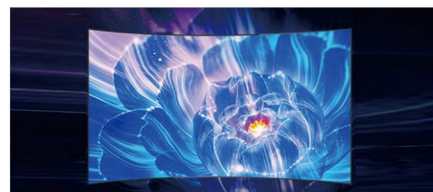
• Artistic design, ultra-slim body.



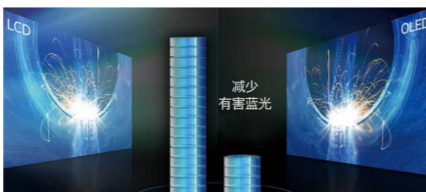
• Flexible.



• Stable color.



• 400cd/m² high brightness.



• Without worrying about eye strain or fatigue.



• 178° wide viewing angle.



Parameter

Model	PD55NC
Panel	55 inches OLED
Brightness	150/400 cd/m ²
Active size (mm)	1209.6mm(H) × 680.4mm(V)
Product size (mm)	1217.48mm (H) X693.94mm(V)X3.5mm (D) (Including the minimum thickness of the installation backplane)
Curvature configuration	R≥1000
Weight	TBD
Backlight life	30000Hrs
Contrast Ratio	150000: 1
Power Consumption	192 Watt(Max)
Dot pitch	0.6x0.6 mm
Color	Black
Resolution	1920×1080
Display color	10bit, 1.07B colors
Menu language	Chinese, English
CPU	RTD2797PM-CG
Power supply	AC~100-240V (60/75Hz)
Display direction	Horizontal, vertical screen
Response time	1 ms
Viewing angle (CR>10)	178°
Menu language	Chinese, English
Color temperature	9300K
Working environment	0~40°C 10%~80%RH No condensation
Accessories	certificate×1, Quick start guide×1, Remote control×1, Display driver box×1, AC power cable (standard)×1, AC power cable (standard)×1
Certificate	CCC

Application





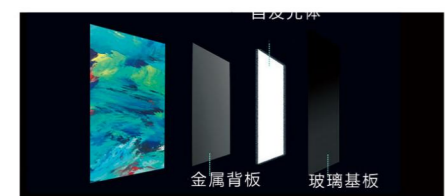
Parameter

Model	PD55NTC
Panel	55 inches OLED
Brightness	120/320 cd/m ² (Min) 、 150/400 cd/m ² (Typ)
Active size (mm)	1209.6mm(H) × 680.4mm(V)
Product size (mm)	1260mm (H) X900mm(V)X305mm (D)
Color	Silver gray (base white)
Display direction	Horizontal, vertical screen
Transparency	36%
Contrast Ratio	150000:1
Power Consumption	192W(max)
Dot pitch	0.6x0.6
Backlight life	30000 hours
Resolution	1920×1080
Display color	10bit, 1.07B colors
Viewing angle (CR>10)	178°
CPU	RTD2797PM - CG
Power supply	AC~100-240V (60/75Hz)
Multimedia transmission	USB,LAN, WAN
Installation method	Countertop placement
Response time	1ms
Menu language	Chinese, English
Color temperature	9300K
Accessories	warranty card × 1, certificate × 1, Quick start guide × 1, Remote control × 1, Security and environmental protection notes × 1, AC power cable (standard)
Certificate	CCC

Transparent OLED Display

Sizes: 55 Inches

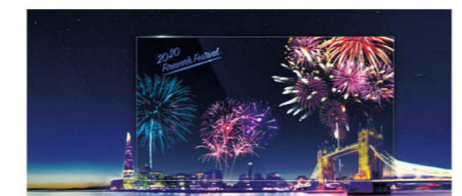
Ultra-slim body. Breakthrough innovative design, present more cool elements, express the transparency of the screen accurately, and achieve an effect that ordinary screen can not achieve.



- OLED's self-luminous display technology, has a wider viewing angle.



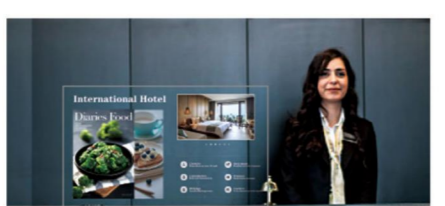
- High transparency is more integrated into the scene.



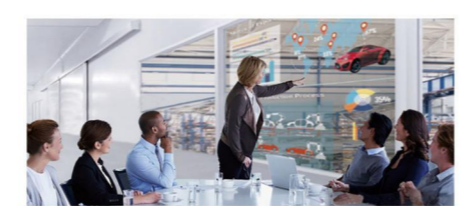
- AR effect in the dark.



- Perfect space color.



- Ultra-slim body.



- Customizable and extended design.

Perfect black

Perfect color

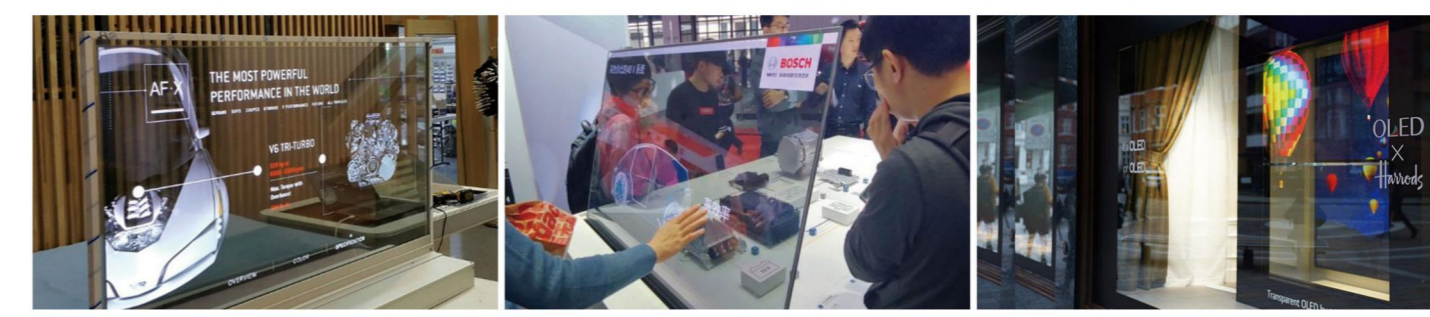
Perfect viewing angle

Smooth picture

Perfect industrial design

LCD VS OLED signage display





Application



Cooperation brand



After-sales service

<p>Service concept:</p> <p>Care for clients, pursue excellence, one year warranty, special service.</p> 	<p>Service advantage:</p> <p>One stop service, worry free, considerate, thoughtful, responsible.</p> 
<p>Service belief:</p> <p>Provide high quality life to users with excellent products and after-sales service.</p> 	<p>Service principle:</p> <p>Efficiency, patience, enthusiasm, consideration.</p> 

24H Service Line: **+86 400-7052-668**

Goodview Interactive Whiteboard National distributions of experience centers

Shanghai Experience Centre

Address: N°458, Jinwan Road, Pudong New Area, Shanghai

Hangzhou Experience Centre

Address: HZA1F06 and HZA1F08 booth, 1F, Buyunow, N°23, Jiaogong Road, Xihu District, Hangzhou

Shenzhen Experience Centre

Address: H1B040 and H1B041 booth, Huaqiang Electronic Plaza Phase II, Shenzhen

Guangzhou Experience Centre

Address: GZA1D12 booth, Buyunow, N° 598, Tianhe Road, Tianhe District, Guangzhou

Beijing Experience Centre

Address: 1028, 1F, Building A on the east side of 58th courtyard. Dongbeiwangxi Road, Haidian District, Beijing

Chengdu Experience Centre

Address: 112 and 113 booth, 1F, N°17, second south section of the Yihuan Road, Chengdu

Nanjing Experience Centre

Address: 52 booth, 2F, Huahai 3C Plaza, N° 435, Zhujiang Road, Xuanwu District, Nanjing

Chongqing Experience Center

Address: ShiqiaoPu Bainaohui 1c11, Jiulongpo District, Chongqing

Wuhan Experience Center

Address: 1012, floor 1, building a, guangbutun Information Plaza, No. 100, Luoyu Road, Hongshan District, Wuhan



