



PRODUCTS CATALOG

Programmable Logic Controller
Human Machine Interface



Addr1:10th Building,E Area,Software Park, Fuzhou,Fujian,China(Manufacturing Center)
Addr2: 6th Building,F Area,Software Park,Fuzhou,Fujian,China(R & D Center)
Tel: +86-591-87868869 ext 894 Fax: +86-591-87843899
Website:www.we-con.com.cn/en
Email: sales@we-con.com.cn
Edition No.:WCT5.1.1



2021 Edition

WECON TECHNOLOGY Co.,LTD.All Rights Reserved.
HMI/ PLC/ IIoT V-BOX/ Servo/ IPC/ VFD Manufacturer

About WECON

WECON TECHNOLOGY Co.,LTD.

WECON TECHNOLOGY Co.,LTD. is a Chinese high technology company, headquartered in Fuzhou software park, Fujian. We independently develop, manufacture, support and sell Human Machine Interface (HMI), Programmable Logic Controller (PLC), Industrial Panel PC (IPC) and V-BOX for Industrial IoT.

Our products are widely used in Machinery, Metallurgy, Chemical, Oil & Gas and other industries. As of May 1st, 2018, WECON has been authorized 47 patents, including 4 utility patents, 41 software intellectual property patents, and 2 appearance patents.

WECON have over 40 domestic offices in major industrial cities, providing technical and sales services to more than 100 agents and numerous terminals throughout the country. Besides domestic market, WECON also expands International market actively. We export products to more than 120 countries and have many distributors such as India, Turkey, Italy, Poland and so on.

Vision: Better Team, Better Products, Contribute to Intelligent Manufacturing.

Values: Devotes in Better Product Experience and Support Customers Success.

Culture



PI9000 SERIES

Super Size High Resolution

Cortex A9 1.4GHz

Aluminum Body

All Metal Design, with Nobility



TFT

High Definition

High Resolution

16000k colors

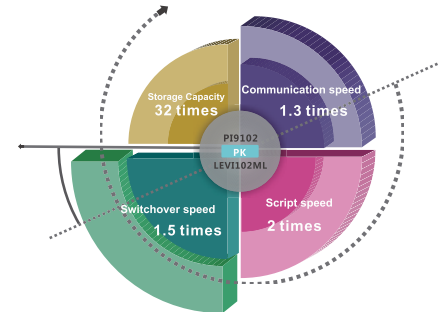
Full view LCD screen

1920 x 1080 pixels



PI8000 SERIES

High-end Configuration



CORTEX A8 CPU

- Flash 2GB EMMC
- 32GB SD card, 64GB USB Flash Drive supported
- RS232/RS485/RS422 supported
- Ethernet, CANBus, USB2.0 (USB Host; USB Client) port supported

HTML5 as the background language, breaks through the traditional restrictions.



Exquisite Graphics

Rich library of charts ,meters.



Multi-language

Up to 8 language that could be displayed on the screen.



Multi-communication Port

Up to 5 serial ports, Ethernet port ,CAN protocol (optional) , Modbus, over 200 protocols supported.

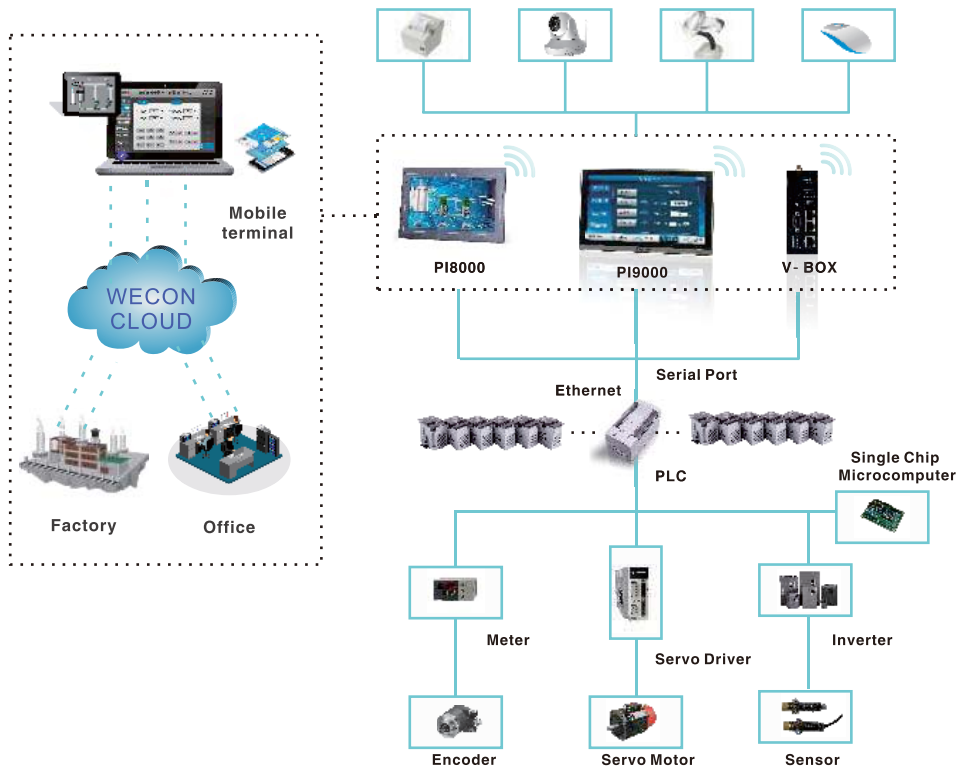


External Devices

Micro-printer, Barcode scanner, WIFI, USB, USB scanner etc.

INTELLIGENT

Cloud Platform >>



Cloud Monitoring

Wecon Smart App for Android/iOS devices supports multiple users operating simultaneously on PI 8000/9000 Series HMI.



Water Treatment



Smart Breeding



Vehicle



Smart Factory



Security

SECURITY

Cloud Message



In case of emergency, notification could be sent to your mobile and you can deal with it immediately.

Remote Debug over cloud



Through connection over cloud, PLC and HMI could be connected to PC for online debugging and programming.

Security System >>



Access Authorization

Access authorization can be set to each button to protect against unauthorized operation or misoperation. Roles are to be assigned to users to facilitate management.



Operation Record

- To record each step of operations from authorized users.
- Timestamp, buttons pressed and depressed, everything would be logged.
- Log files are stored in database format for data analyzation to improve management.



Security Management

- Programmer passwords can protect your project from unauthorized access or reverse engineering.
- Project passwords protect your project files against uploading and running on unauthorized HMIs.



Password Security

Project passwords, access passwords, administration passwords and remote passwords are working together to ensure secure access.

PI3000ie SERIES

NEW UPGRADE MORE FLUENT TOUCH

- Front indicator light
- Enhance software security
- Less boot time
- Better waterproof & cooling



Advanced CPU



Faster screen switch



Better communication stability

PI3035ie/ PI3150ie are coming soon

PI3000ie SPECIFICATIONS

Basic HMI



Model	PI3043ie	PI3043ie-N	PI3043ieS	PI3043ieS-N
-------	----------	------------	-----------	-------------

Item	Specifications				
CPU	Cortex A35 1.2GHz				
Touch Screen	High precision four-wire resistive				
Display	Screen Size	4.3 Inch			
	Resolution	480*272			
	Brightness	300cd/㎡			
	Backlight Type	LED			
	Backlight Life Time	50,000 Hours			
Storage	Colors	16,000k colors			
	Flash	128MB			
	RAM	DDRII 64MB			
	SD Card	N/A			
I/O Port	RTC	Real Time Clock			
	Micro-USB	USB 2.0 x 1			
	Serial Port	COM1	1 serial port (7-pin terminal) RS232, RS422 / RS485 (2 in 1)	1 serial port (9-pin terminal) RS232, RS422 / RS485 (2 in 1), RS485	
		COM2	--	--	
		COM3	--	--	
Ethernet	N/A	YES	N/A	YES	
Permanent Calendar	Built-in				
Power	Power Supply	24V DC(12~28V DC)			
	Power Consumption	< 5W			
Dimension	Enclosure	PC+ABS			
	Dimension(mm)	142.0W*86.0H*30.3D			
	Mounting Size (mm)	131.0W*78.0H			
	Weight (KG)	0.19/0.3			
Environment	Protection	IP65 (Front panel)			
	Temperature	Storage: -20℃~60℃ ; Working: 0℃~50℃			
	Humidity	10 ~ 90%RH (Non-condensing)			
	Vibration Resistance	10 ~ 25 Hz (X, Y, Z direction 2G/30 minutes)			
CE Certification	CE Marked				
FCC Certification	FCC Class A				
Programming Software	PI Studio				
Remote Control	N/A				

PI3000ie SPECIFICATIONS

Basic HMI



Model	PI3070ie	PI3102ie
-------	----------	----------

Item	Specifications	
CPU	Cortex A35 1.2GHz	
Touch Screen	High precision four-wire resistive	
Display	Screen Size	7 Inch 10.2 Inch
	Resolution	800*480 1024*600
	Brightness	250 cd/m ² 350 cd/m ²
	Backlight Type	LED
	Backlight Life Time	50,000 Hours
	Colors	16,000k colors
Storage	Flash	128MB
	RAM	DDRII 64MB
	SD Card	NA
Ports	USB	USB Host: USB 2.0 x 1 ; USB Client: USB 2.0 x 1
	Port Number	1 Physical Serial Port
	Serial Port	COM1 : RS232, RS422 / RS485 (2 in 1)
	Ethernet	N/A
Permanent Calendar	Built-in	
Power	Power Supply	24V DC(12-28V DC)
	Power Consumption	< 15W
Dimension	Enclosure	PC+ABS
	Dimension(mm)	201.2W*147.2H*39.0D 272.0W*191.0H*41.5D
	Mounting Size (mm)	192.0W*138.0H 260.0W*179.0H
	Weight (KG)	0.52 1.02
Environment	Protection	IP65 (Front panel)
	Temperature	Storage: -20℃~70℃ ; Working: -10℃~60℃
	Humidity	10 - 90%RH(Non-condensing)
	Vibration Resistance	10 - 25 Hz (X, Y, Z direction 2G/30 minutes)
CE Certification	CE Marked	
FCC Certification	FCC Class A	
Programming Software	PI Studio	
Remote Control	N/A	

PI3000i SPECIFICATIONS

Basic HMI



Model	PI3070i	PI3070i-N	PI3102i	PI3070i-SL	PI3070i-N-SL
-------	---------	-----------	---------	------------	--------------

Item	Specifications				
CPU	Cortex A7 528MHz				
Touch Screen	High precision four-wire resistive				
Display	Screen Size	7 Inch	10.2 Inch	7 Inch	
	Resolution	800*480	1024*600	800*480	
	Brightness	250 cd/m ²	350 cd/m ²	250 cd/m ²	
	Backlight Type	LED			
	Backlight Life Time	50,000 Hours			
	Colors	16,000k colors			
Storage	Flash	128MB			
	RAM	DDRIII 128MB			
	SD Card	NA			
Ports	USB	USB Host: USB 2.0 x 1 ; USB Client: USB 2.0 x 1			
	Port Number	1 Physical Serial Port			
	Serial Port	COM1 : RS232, RS422 / RS485(2 in 1)			
	Ethernet	N/A	YES	YES	N/A YES
	Permanent Calendar	Built-in			
Power	Power Supply	24V DC(12-28V DC)			
	Power Consumption	< 8W	< 10W	< 8W	
Dimension	Enclosure	ABS			
	Dimension(mm)	201.2W*147.2H*39.0D	272.0W*190.0H*41.5D	191.2W*137.2H*41.0D	
	Mounting Size (mm)	192.0W*138.0H	260.0W*179.0H	172.0W*111.0H	
	Weight (KG)	0.51 / 0.74	1.00 / 1.31	0.52 / 0.74	
Environment	Protection	IP65 (Front panel)			
	Temperature	Storage: -20℃~70℃ ; Working: -10℃~60℃			
	Humidity	10 - 85%RH(Non-condensing)			
	Vibration Resistance	10 - 25 Hz (X, Y, Z direction 2G/30 minutes)			
CE Certification	CE Marked				
FCC Certification	FCC Class A				
Programming Software	PI Studio				
Remote Control	N/A				

PI3000 SPECIFICATIONS

Basic HMI



Model

PI3070N

PI3102H

Item	Specifications	
CPU	Cortex A8 600MHz	
Touch Screen	High precision four-wire resistive	
Display	Screen Size	7 Inch 10.2 Inch
	Resolution	800*480 1024*600
	Brightness	300 cd/m ² 350 cd/m ²
	Backlight Type	LED
	Backlight Life Time	50,000 Hours
Storage	Colors	16,000k colors
	Flash	128MB
	RAM	DDRIII 128MB
Ports	SD Card	Compatible
	USB	USB Host: USB 2.0 x 1 ; USB Client: USB 2.0 x 1
	Port Number	2 Physical Serial Ports
	Serial Port	COM1
COM2		RS232/RS485
COM3		--
Ethernet	YES	
Permanent Calendar	Built-in	
Power	Power Supply	24V DC(12~28V DC)
	Power Consumption	<10W
Dimension	Enclosure	ABS
	Dimension(mm)	200.1W*146.0H*36.5D 271.8W*190.4H*41.2D
	Mounting Size (mm)	192.0W*138.0H 260.0W*179.0H
	Weight (KG)	0.6 1.2
Environment	Protection	IP65 (Front panel)
	Temperature	Storage: -30℃~70℃ ; Working: -10℃~60℃
	Humidity	10 ~ 90%RH(Non-condensing)
	Vibration Resistance	10~25Hz (X,Y,Z direction 2G/3D minutes)
CE Certification	CE Marked	
FCC Certification	FCC Class A	
Programming Software	PI Studio	
Remote Control	N/A	

PI9000/PI8000 SPECIFICATIONS

High-end HMI



Model

PI8070

PI8102H

PI8104

PI9150

Item	Specifications				
CPU	Cortex A8 600MHz			Cortex A9 1.4GHz	
TouchScreen	High precision four-wire resistive				
Display	Screen Size	7 Inch	10.2Inch	10.4Inch 15 Inch	
	Resolution	800*480	1024 *600	800*600 1920*1080	
	Brightness	300cd/m ²	350 cd/m ²	300cd/m ² 250cd/m ²	
	Backlight Type	LED			
	Backlight LifeTime	50,000 Hours			
Storage	Colors	16,000k colors			
	Flash	2GB EMMC		4GB EMMC	
	RAM	DDRIII 512MB			
	SDCard	Compatible			
I/O Ports	RTC	Real Time Clock			
	USB	USB Host:USB 2.0x 1 ; USB Client:USB 2.0x 1			
	Serial Port	COM1	RS232,RS422/RS485		
		COM2	RS232,RS485		
		COM3	RS485		
Ethernet	YES				
CAN	Optional			N/A	
Permanent Calendar	Built-in				
Power	Power Supply	24VDC(12~28V DC)			
	Power	< 10W			< 20W
Dimension	Enclosure	ABS			Aluminum
	Dimension(mm)	200.1W*146.0H*36.5D	271.8W*190.4H*41.2D	298.0W*223.0H*53.5D	402.9W*253.2H*47.0D
	Mounting	192.0W*138.0H	260.0W*179.0H	288.0W*212.0H	394.0W*244.0H
	Weight(KG)	0.6	1.2	1.9	3.1
Environment	Protection	IP65(Frontpanel)			
	Storage Environment	Storage: -30℃~70℃ ;			Storage: -30℃~70℃ ;
	Working Environment	Working: -10℃~60℃			Working: 0℃~50℃
	Working	10 ~ 90%RH(Non-condensing)			
Vibration Resistance	10 ~ 25 Hz(X,Y,Z direction 2G/30minutes)				
CE Certification	CE Marked				
FCC Certification	FCC Class A				
Software	PI Studio				
Remote Control	Optional				

PI3000ig IoT HMI

PI3000ig IoT HMI, Create for the Internet of Things

128MB FLASH/RAM, Cortex A35 1.2GHz CPU, More Fluent Touch



Ethernet



Remote
Download



Remote
Monitoring



MQTT



4G/WIFI

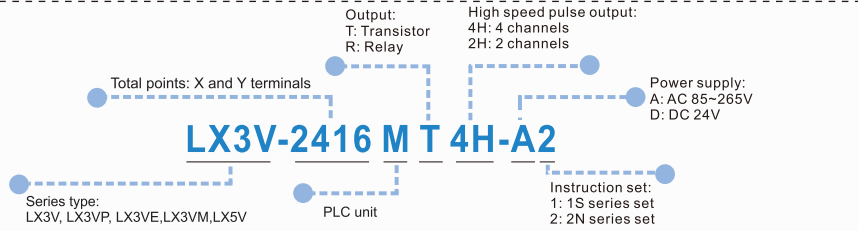
PI3000ig SPECIFICATIONS

High-end
HMI



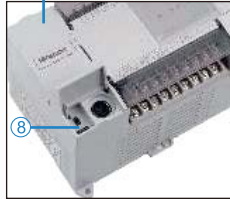
Model		PI3070ig	PI3102ig	
Item	Specifications			
CPU	Cortex A35 1.2GHz			
Touch Screen	High precision four-wire resistive			
Display	Screen Size	7 Inch	10.2 Inch	
	Resolution	800*480	1024*600	
	Brightness	250 cd/m ²	350 cd/m ²	
	Backlight Type	LED		
	Backlight Life	50,000 Hours		
Storage	Colors	16,000k colors		
	Flash	128 MB		
	RAM	DDRIII 128MB		
	SD Card	YES		
I/O Port	USB	USB Host 2.0 x 1, USB Client 2.0 x 1		
	Serial Port	1 Physical Port		
		COM1	RS232, RS422 / RS485 (2 in 1), RS485	
		COM2	--	
	COM3	--		
	Ethernet	YES		
CAN	N/A			
4G/WIFI	Optional			
Permanent Calendar	Built-in			
Power	Power Supply	24V DC (12~28V DC)		
	Power	< 15W		
Dimension	Enclosure	PC+ABS		
	Dimension(mm)	201.2W*147.2H*39.0D	272W*191H*41.5D	
	Mounting Size	192.0W*138.0H	260.0W*179.0H	
	Weight (KG)	0.52	1.02	
Environment	Protection	IP65 (Front panel)		
	Temperature	Storage: -30℃~70℃; Working: -10℃~60℃		
	Humidity	10 ~ 90%RH (Non-condensing)		
	Vibration Resistance	10 ~ 25 Hz (X, Y, Z direction 2G/30 minutes)		
CE Certification	CE Marked			
FCC Certification	FCC Class A			
Programming Software	PI Studio			
Software	IoT Service	Real-time Monitoring Points: 100		
		Alarm Monitoring Points: 20		
		History Monitoring Points: 50		
	History Storage: 60 days / 5 millions			
VPN Pass-through	YES			

PROGRAMMABLE LOGIC CONTROLLER



PLC Introduction

1. Universal Power Supply Design —85~264V AC 50/60 HZ, wide range power supply.
2. All core components used are from well-known global brands.
3. The 'Three layer coating' ensures the reliability in harsh environment.
4. Flash memory data storage.
5. 200 KHz high speed.
6. Com port – 600 TVS, static surge protection.
7. RS485 communication port ensures the reliability of communication in vibration.
8. Reliable and stable high speed USB port for programming download/monitor.

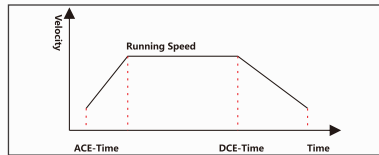


High Speed Pulse Input

- External high speed pulse input supports Encoder (AB phase) input, pulse + direction mode input; Maximum support for 200 KHz pulse signal input.
- AB phase signal can support configurable frequency settings (i.e. x1, x2 or x4).

High Speed Pulse Output

- Supports high speed pulse signal output with acceleration and deceleration.
- The acceleration and deceleration time are configurable.
- Pulse modulation output one by one.



Program Encryption

It prevents users from illegal copy and tamper of the program.

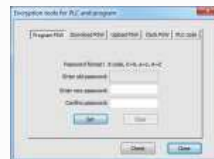
Subprogram Encryption

Partial encryption function of the ladder diagram can be realized, and it can encrypt subprograms and interrupts. This function enables protection of important subprogram segment. By choosing the subprogram and setting the password, it can be encrypted. Once it has been encrypted than the subprogram is in "subprogram encryption" state and the encrypted contents will not be displayed.

Ladder Encryption Methods

The PLC encryption includes project encryption, upload password and download password. All of those passwords can be used for the entire ladder program.

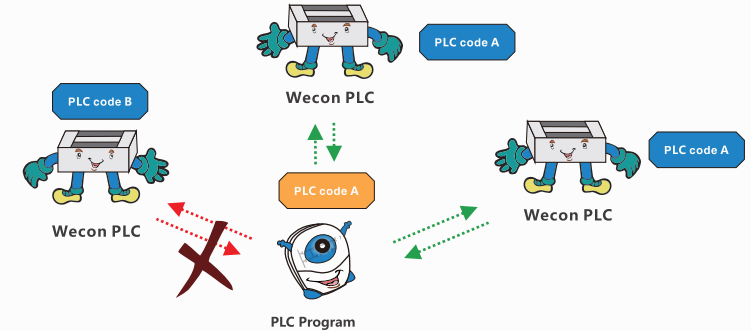
All these kinds of passwords are independent from each other (user need to set password separately during each of these operations), the password can be same or different to ensure copyright of PLC program.



PROGRAMMABLE LOGIC CONTROLLER

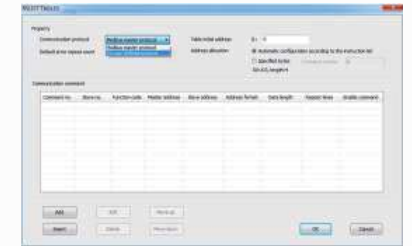
PLC Host and Program Encryption

For additional protection of the program, project building can be dedicated to the specified PLC model. PLC identification code and program identification code can be introduced. User can set the program identification code of the project and also can set a PLC identification code for the PLC. So, the software will compare the program identification code and PLC identification code at every attempt of the upload or download of the program and can be executed to only designated PLC.



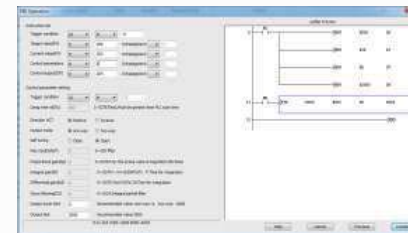
Modbus Listed Instruction

In the original MODBUS protocol, users must program RS instruction in ladder. But the editing process is quite cumbersome and imperfect. With the help of new method (RSLIST+RSLIST communication list), it becomes easier.

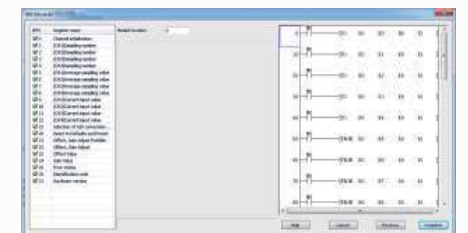


Features of PLC Wizard Function

- Modules monitor function guides the user to monitor the BFM data in real time. This function reduces customer dependency on module manuals.
- It guides the user to generate the ladder program with the corresponding content (i.e. instruction, modules, BD board, etc.). It saves customer's comprehension time and reduces error which may occur while editing ladder. Also it will help the user to create functioning ladder more quickly.



PID Operation Wizard Setting



LX-4AD Module Wizard Setting

APPLICATION

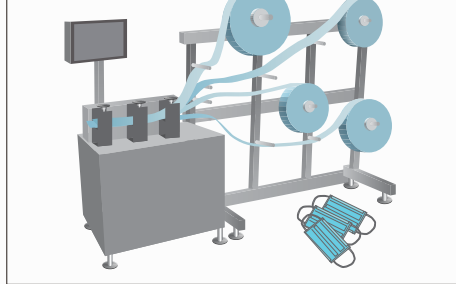
PLC LX3V Series >>

- Supports 2 BD modules and more expansion modules, as well as stabler operation.
- USB port supports much higher upload and download speed.
- Support PID control, floating point calculation.

Face mask machine includes main unit, feeder unit, welding unit, packing unit.

Pressing and slicing, dividing and transferring, earband welding, each part realizes semi-automatic and automated production, which is faster and more stable. The core of the automatic control system is mainly composed of PLC, HMI, Servo, Stepper motor, photoelectric switch, contactor and relay.

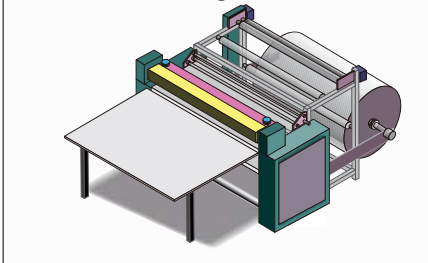
Face Mask Machine



PLC LX3VE Series >>

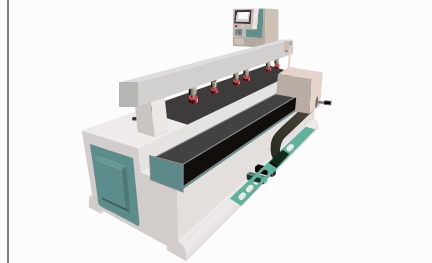
- Up to 4 channels each of 200 KHz high speed pulse outputs are supported, all 4 channels can work simultaneously.
- Supports 32k steps ladder diagram.
- Supports electronic CAM.
- Supports flying cut and rotary cut.
- Supports jitter pulse output.
- Supports S-type curve to meet special demands.

Crosscutting Machine



Crosscutting machine belongs to carton processing machinery. The crosscutting machine is used in the production line of the corrugated board. It is used for the cutting of the finished cardboard. The technical feature and equipment adjustment status directly affects the accuracy of the finished cardboard's cutting sizes and the appearance of the pressure line.

Side Cutting Machine



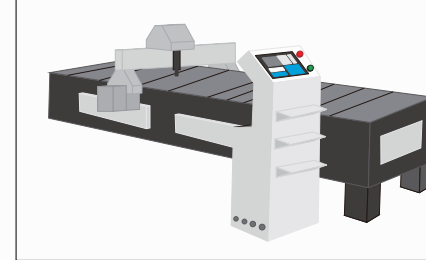
Side Cutting Machine is a CNC machine for punching of holes in the side of the plate type furniture. It is suitable for horizontal hole machining and horizontal slotting. It has features like, Infrared automatic induction, accurate detection of the hole position, accurate movement distance, low error, simple operation, eliminate the need of skilled workers, convenient and efficient.

PLC LX3VM Series >>

- Up to 4 channels independent 200 KHz high speed pulse output are supported, 4 channels can be used simultaneously.
- Supports 32k steps ladder diagram.
- Three axis linear interpolation (Y0,Y1,Y2) and two axis circular interpolation are supported(Y0,Y1).
- Supports electronic CAM.
- Supports Jitter pulse output.

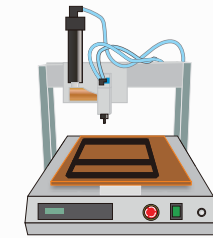
APPLICATION

Cutting Machine



Through the linear-circle interpolation function, the cutting machine realizes the multi axis path positioning control, improves cutting efficiency, quality and relieves the working intensity.

Glue Injector Machine/Glue Dispenser



Glue injector machine realizes multi-axis path positioning control through linear arc interpolation function and operate it according to the set path. It can be set to semi-automatic, fully automatic, or adjustment modes.

LX3V-2WT >>

- 2 channels weighing signal input.
- Hardware 24-bit AD input (2: 24-bit Resolution).
- Support 1~2400 Hz frequency conversion speed.
- Adjustable setting of Digital filter.
- Adjustable setting of Tare weight and Net weight.

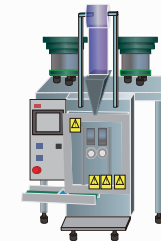
Screw packaging machine is a typical equipment for vibrating plate feeding, screw weighing and packaging. It is difficult to count the actual number of screws dropped down from plate by optical bit counter because of the irregular shape of the object to be weighed. Therefore, it is divided into multistage speed to control the vibration of the feeding plate, it uses the round up and round down (half adjust) to complete counting process. The first part uses the weight measurement, the second part uses the number to compare whether the set weight is achieved.

LX3V-4LTC >>

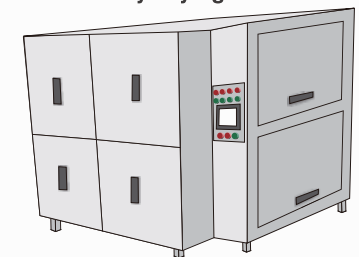
LX3V-4LTC is temperature control module, it has four temperature input ports and four transistor output ports (open collector). It reads data from the thermocouple, and give output value with PID control algorithm.

Battery Drying Oven, its working process includes warming – cooling – vacuum – forcing – nitrogen filling. The project has total 100 processes comprises two different process cycles. Data monitoring, data acquiring, PID Auto-tuning (self-tuning). Measurement of Temperature at different 12 points. There difference in the temperature at upper, lower, middle, center of the oven. So, temperature gradient is there and homogeneity of the oven is affected.

Screw Packaging Machine



Battery Drying Oven



LX5V Series PLC



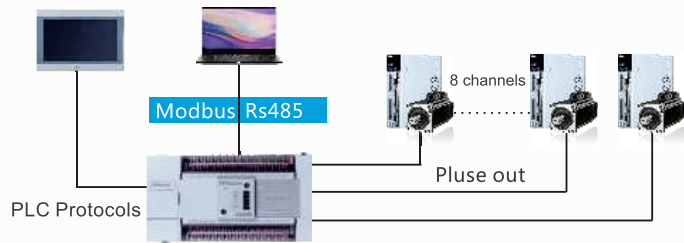
- Faster: 0.01us~0.03us execution speed
- Supports larger program capacity: 48k steps
- Supports the highest baud rate: 921600
- Supports 8 channels external interrupt, and support both rising and falling edges
- Supports 100us high-speed timer interrupt
- Supports up to 100 high-speed counting interrupts
- Supports E-CAM
- Supports electronic gear
- Supports efficient and stable PID and CCPID self-tuning
- Supports IO module and analog module of LX3V series
- Supports BD modules of LX3V series (Communication BD module not supported now)

8 Channels High Speed Pulse Input

LX5V comes standard with 8 channels high speed counter (HSC0~HSC7 for 8 channels). The maximum counting frequency of the 8 channels single-phase high-speed counter is 150KHZ, and the maximum counting frequency of the 8-channels AB phase high-speed counter is 100KHZ. This high-speed counter is executed by hardware, and will be more efficient and faster.

8 Channels High Speed Pulse Output

LX5V comes standard with 8 channels high speed pulse output. The maximum output frequency of 8-channels high-speed pulse output is 200KHZ, which can modify the frequency and number of high-speed pulse output during operation(targeted positions). LX5V PLC realize equipment working with high speed, precise and reliable pulse control in a cost-effective way.



More Registers

- 64KB latch area
- Added 128 timers of 0.1ms
- 76KB of data capacity
- Added 128 timers of 1ms

Software Advantages

Based on Wecon PLC Editor, LX5V programming software is optimized and upgraded to be easier configuration, clearer program classification and parameter configuration. Multi-segment scanning program, multi-event program, multiple subroutines and multiple interrupt programs are added.

EXPANSION MODULE

PLC EXPANSION MODULE

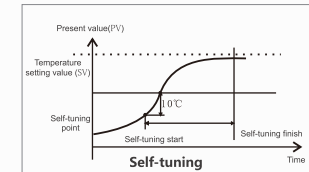
- **Multi-module connection :**
Support up to 16 modules, 256 input points or 256 output points.
Due to the difference plc model, user need to calculate the power consumption at first.
- **DA module resolution :12 bits**
- **PT/TC module resolution**
 - S-type sensor:-50~+1768 (degree centigrade)
 - R-type sensor:-50~+1768 (degree centigrade)
 - B-type sensor:+250~+1820 (degree centigrade)
 - N-type sensor:-200~+1300 (degree centigrade)
 - E-type sensor:-200~+1000 (degree centigrade)
 - T-type sensor:-200~+400 (degree centigrade)
 - J-type sensor: -210~+600 (degree centigrade)
 - K-type sensor:-200~+1372 (degree centigrade)
 - Pt100 sensor:-100~+600 (degree centigrade)

- **AD module resolution :16 bits**
- **WT module resolution :24 bits**



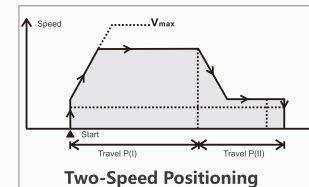
LX3V-8iTC

- 8 channels for temperature acquiring; Multiple sensor types are supported; Supports thermocouple types like K, S, E, N, B, T, J and R.
- All 8 channels are isolated each other.
- Built-in cold junction compensation, external cold junction compensation, freezing cold junction compensation method.



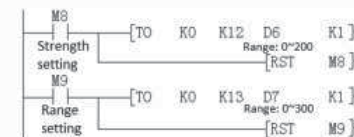
LX3V-4PGA

- Supports 4-channel high speed pulse outputs.
- Supports zero point return, JOG, interrupt position and two-speed pulse control.
- Supports S-type acceleration and deceleration.
- Maximum supports for 200k pulse output.
- Interrupt signal, origin signal input.

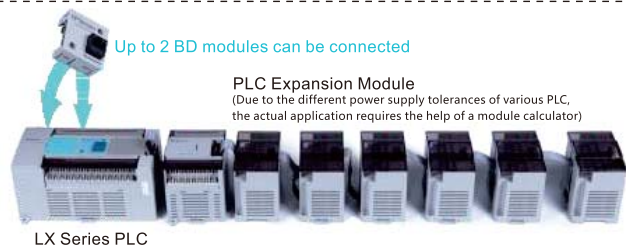


LX3V-2WT

- 2 channels weighing signal input.
- Hardware 24-bits AD input (2: 24-bit Resolution).
- Supports 1~2400 Hz frequency conversion.
- Adjustable setting of Digital filter.
- Adjustable setting of Tare weight and Net weight.
- Zero-tracking can reduce the influence of temperature drift effective.



BD MODULE



PLC Expansion Module
(Due to the different power supply tolerances of various PLC,
the actual application requires the help of a module calculator)

LX Series PLC

Analog BD BOARD



Model	Resolution	Input/Output Range	Data Range
DA	12	Output Current : 4~20mA	0~2000
AD	12	Input Current : 4~20mA	0~2000
PT	14	Sensor:PT100-100~600°C	-1000~6000
TC	14	Sensor:Ktype-100~1200°C	-1000~12000
TC	14	Sensor:Jtype-100~600°C	-1000~6000
DAV	12	Output Voltage:-10~10V	-2000~2000
ADV	12	Input Voltage:-10~10V	-2000~2000

Communication Expansion Board



LX3VP-ETH-BD

By using LX3VP-ETH-BD,
Ethernet port can be added.



LX3VP-CAN Communication

(Only some models of 3VP supported [LX-3VP2416 Mix supported])

- For Good real-time communication, strong correction ability and stable communication.
- Supports CANopen standard protocol DS301 V4.02.
- Supports 16 slave devices when used as master.
- Free configuration by using CANopen network configuration software "CANopen Tool".
- It works as a master or a slave.

- Supports Modbus-Top protocol.
- Maximum 8 devices can be connected (no master-slave) to one LX3VP-EH-BD module.

PLC BD Module



BD Board	Function	BD Board	Function
LX3V-2AD12DAI-BD	2 * Analog Input/ Analog Output (4~20mA)	LX3V-2PT-BD	2 * Thermal Resistance Input
LX3V-2TC2DAI-BD	2 * Thermocouple Input; 2 * Analog Output (4~20mA)	LX3V-2PT2ADV-BD	2 * Thermal Resistance Input; 2 * Analog Voltage input(-10v~10v)
LX3V-2PT2DAI-BD	2 * Thermal Resistance Input; 2 * Analog Output (4~20mA)	LX3V-2PT2DAV-BD	2 * Thermal Resistance Input; 2 * Analog Voltage Output(-10v~10v)
LX3V-2TC-BD	2 * Thermocouple Input	LX3V-2ADV2DAV-BD	2 * Analog Input/ Output (-10V~10V)
LX3V-4ADI-BD	4 * Analog Input (4~20mA)	LX3V-2RS485-BD	2 * RS485 Communication
LX3V-4ADV-BD	4 * Analog Input (-10V~10V)	LX3V-ETH-BD	1 * Ethernet Communication
LX3V-2ADV-BD	2*Analog Voltage Input(-10v-10v)	LX3V-2DAI-BD	2*Analog Current Output(4-20mA)
LX3V-2ADI-BD	2*Analog Current Input(4-20mA)	LX3V-2DAV-BD	2*Analog Voltage Output(-10v-10v)
LX3V-2PTS-BD	2* Thermal Resistance Input, Precision >0.1 °C		

LX3V SERIES PLC PRODUCT

LX3V Series



PLC Model	I/O	Output type	Dimension (mm)	Pulse Counter	Pulse Output	RS485	BD Board	Module	Power Supply
LX3V-0806MR-A1(D1)	8/6	Relay	75x107x87	2	0	1	1	N/A	AC (DC)
LX3V-0806MT-A1(D1)	8/6	Transistor	75x107x87	2	2	1	1	N/A	AC (DC)
LX3V-0806MR-A2(D2)	8/6	Relay	75x107x87	2	0	1	1	N/A	AC (DC)
LX3V-0806MT-A2(D2)	8/6	Transistor	75x107x87	2	2	1	1	N/A	AC (DC)
LX3V-1208MR-A1(D1)	12/8	Relay	75x107x87	2	0	1	1	N/A	AC (DC)
LX3V-1208MT-A1(D1)	12/8	Transistor	75x107x87	2	2	1	1	N/A	AC (DC)
LX3V-1208MR-A2(D2)	12/8	Relay	75x107x87	2	0	1	1	N/A	AC (DC)
LX3V-1208MT-A2(D2)	12/8	Transistor	75x107x87	2	2	1	1	N/A	AC (DC)
LX3V-1208MR2H-A2(D2)	12/8	Mix	75x107x87	2	2	1	1	N/A	AC (DC)
LX3V-1212MR-A(D)	12/12	Relay	137x107x87	2	0	2	1	YES	AC (DC)
LX3V-1212MT-A(D)	12/12	Transistor	137x107x87	2	2	2	1	YES	AC (DC)
LX3V-1212MT4H-A(D)	12/12	Transistor	137x107x87	2	4	2	1	YES	AC (DC)
LX3V-1212MR2H-A(D)	12/12	Mix	137x107x87	2	2	2	1	YES	AC (DC)
LX3V-1412MR-A(D)	14/12	Relay	137x107x87	2	0	2	1	YES	AC (DC)
LX3V-1412MT-A(D)	14/12	Transistor	137x107x87	2	2	2	1	YES	AC (DC)
LX3V-1412MT4H-A(D)	14/12	Transistor	137x107x87	2	4	2	1	YES	AC (DC)
LX3V-1412MR2H-A(D)	14/12	Mix	137x107x87	2	2	2	1	YES	AC (DC)
LX3V-1616MR-A(D)	16/16	Relay	175x107x87	2	0	2	2	YES	AC (DC)
LX3V-1616MT-A(D)	16/16	Transistor	175x107x87	2	2	2	2	YES	AC (DC)
LX3V-1616MT4H-A(D)	16/16	Transistor	175x107x87	2	4	2	2	YES	AC (DC)
LX3V-1616MR2H-A(D)	16/16	Mix	175x107x87	2	2	2	2	YES	AC (DC)
LX3V-2416MR-A(D)	24/16	Relay	175x107x87	2	0	2	2	YES	AC (DC)
LX3V-2416MT-A(D)	24/16	Transistor	175x107x87	2	2	2	2	YES	AC (DC)
LX3V-2416MT4H-A(D)	24/16	Transistor	175x107x87	2	4	2	2	YES	AC (DC)
LX3V-2416MR2H-A(D)	24/16	Mix	175x107x87	2	2	2	2	YES	AC (DC)
LX3V-2424MR-A(D)	24/24	Relay	220x107x87	2	0	2	2	YES	AC (DC)
LX3V-2424MT-A(D)	24/24	Transistor	220x107x87	2	2	2	2	YES	AC (DC)
LX3V-2424MT4H-A(D)	24/24	Transistor	220x107x87	2	4	2	2	YES	AC (DC)
LX3V-2424MR2H-A(D)	24/24	Mix	220x107x87	2	2	2	2	YES	AC (DC)
LX3V-3624MR-A(D)	36/24	Relay	220x107x87	2	0	2	2	YES	AC (DC)
LX3V-3624MT-A(D)	36/24	Transistor	220x107x87	2	2	2	2	YES	AC (DC)
LX3V-3624MT4H-A(D)	36/24	Transistor	220x107x87	2	4	2	2	YES	AC (DC)
LX3V-3624MR2H-A(D)	36/24	Mix	220x107x87	2	2	2	2	YES	AC (DC)

LX3VP SERIES PLC PRODUCT

LX3VP Series



PLC Model	I/O	Output type	Dimension (mm)	Pulse Counter	Pulse Output	RS485	CAN	BD Board	Module	Power Supply
LX3VP-1208MR-A(D)	12/8	Relay	75x107x87	2	0	1	N/A	1	N/A	AC (DC)
LX3VP-1208MT-A(D)	12/8	Transistor	75x107x87	2	2	1	N/A	1	N/A	AC (DC)
LX3VP-1212MR-A(D)	12/12	Relay	137x107x87	2	0	2	N/A	1	YES	AC (DC)
LX3VP-1212MT-A(D)	12/12	Transistor	137x107x87	2	2	2	N/A	1	YES	AC (DC)
LX3VP-1212MT4H-A(D)	12/12	Transistor	137x107x87	2	4	2	N/A	1	YES	AC (DC)
LX3VP-1212MR2H-A(D)	12/12	Mix	137x107x87	2	2	2	N/A	1	YES	AC (DC)

LX3VP-1412MR-A(D)	14/12	Relay	137x107x87	2	0	2	N/A	1	YES	AC (DC)
LX3VP-1412MT-A(D)	14/12	Transistor	137x107x87	2	2	2	N/A	1	YES	AC (DC)
LX3VP-1412MT4H-A(D)	14/12	Transistor	137x107x87	2	4	2	N/A	1	YES	AC (DC)
LX3VP-1412MR2H-A(D)	14/12	Mix	137x107x87	2	2	2	N/A	1	YES	AC (DC)

LX3VP-1616MR-A(D)	16/16	Relay	175x107x87	2	0	2	N/A	2	YES	AC (DC)
LX3VP-1616MT-A(D)	16/16	Transistor	175x107x87	2	2	2	N/A	2	YES	AC (DC)
LX3VP-1616MT4H-A(D)	16/16	Transistor	175x107x87	2	4	2	N/A	2	YES	AC (DC)
LX3VP-1616MR2H-A(D)	16/16	Mix	175x107x87	2	2	2	N/A	2	YES	AC (DC)

LX3VP-2416MR-A(D)	24/16	Relay	175x107x87	2	0	2	Optional	2	YES	AC (DC)
LX3VP-2416MT-A(D)	24/16	Transistor	175x107x87	2	2	2	Optional	2	YES	AC (DC)
LX3VP-2416MT4H-A(D)	24/16	Transistor	175x107x87	2	4	2	Optional	2	YES	AC (DC)
LX3VP-2416MR2H-A(D)	24/16	Mix	175x107x87	2	2	2	Optional	2	YES	AC (DC)

LX3VP-2424MR-A(D)	24/24	Relay	220x107x87	2	0	2	N/A	2	YES	AC (DC)
LX3VP-2424MT-A(D)	24/24	Transistor	220x107x87	2	2	2	N/A	2	YES	AC (DC)
LX3VP-2424MT4H-A(D)	24/24	Transistor	220x107x87	2	4	2	N/A	2	YES	AC (DC)
LX3VP-2424MR2H-A(D)	24/24	Mix	220x107x87	2	2	2	N/A	2	YES	AC (DC)

LX3VP-3624MR-A(D)	36/24	Relay	220x107x87	2	0	2	N/A	2	YES	AC (DC)
LX3VP-3624MT-A(D)	36/24	Transistor	220x107x87	2	2	2	N/A	2	YES	AC (DC)
LX3VP-3624MT4H-A(D)	36/24	Transistor	220x107x87	2	4	2	N/A	2	YES	AC (DC)
LX3VP-3624MR2H-A(D)	36/24	Mix	220x107x87	2	2	2	N/A	2	YES	AC (DC)

LX3VE&3VM&5V SERIES PLC PRODUCT

LX3VE Series



PLC Model	I/O	Output type	Dimension (mm)	Pulse Counter	E-CAM	Pulse Output	RS485	BD Board	Module	Power Supply
LX3VE-1412MT-A	14/12	Transistor	137x107x87	2	YES	2	2	1	YES	AC(DC)
LX3VE-1412MT4H-A	14/12	Transistor	137x107x87	2	YES	4	2	1	YES	AC(DC)
LX3VE-1616MT-A	16/16	Transistor	175x107x87	2	YES	2	2	2	YES	AC(DC)
LX3VE-1616MT4H-A	16/16	Transistor	175x107x87	2	YES	4	2	2	YES	AC(DC)
LX3VE-2416MT-A	24/16	Transistor	175x107x87	2	YES	2	2	2	YES	AC(DC)
LX3VE-2416MT4H-A	24/16	Transistor	175x107x87	2	YES	4	2	2	YES	AC(DC)
LX3VE-2424MT-A	24/24	Transistor	220x107x87	2	YES	2	2	2	YES	AC(DC)
LX3VE-2424MT4H-A	24/24	Transistor	220x107x87	2	YES	4	2	2	YES	AC(DC)
LX3VE-3624MT-A	36/24	Transistor	220x107x87	2	YES	2	2	2	YES	AC(DC)
LX3VE-3624MT4H-A	36/24	Transistor	220x107x87	2	YES	4	2	2	YES	AC(DC)

LX3VM Series



PLC Model	I/O	Output type	Dimension (mm)	Pulse Counter	E-CAM	Interpolation	Pulse Output	RS485	BD Board	Module	Power Supply
LX3VM-1412MT-A	14/12	Transistor	137x107x87	2	YES	YES	2	2	1	YES	AC(DC)
LX3VM-1412MT4H-A	14/12	Transistor	137x107x87	2	YES	YES	4	2	1	YES	AC(DC)
LX3VM-1616MT-A	16/16	Transistor	175x107x87	2	YES	YES	2	2	2	YES	AC(DC)
LX3VM-1616MT4H-A	16/16	Transistor	175x107x87	2	YES	YES	4	2	2	YES	AC(DC)
LX3VM-2416MT-A	24/16	Transistor	175x107x87	2	YES	YES	2	2	2	YES	AC(DC)
LX3VM-2416MT4H-A	24/16	Transistor	175x107x87	2	YES	YES	4	2	2	YES	AC(DC)
LX3VM-2424MT-A	24/24	Transistor	220x107x87	2	YES	YES	2	2	2	YES	AC(DC)
LX3VM-2424MT4H-A	24/24	Transistor	220x107x87	2	YES	YES	4	2	2	YES	AC(DC)
LX3VM-3624MT-A	36/24	Transistor	220x107x87	2	YES	YES	2	2	2	YES	AC(DC)
LX3VM-3624MT4H-A	36/24	Transistor	220x107x87	2	YES	YES	4	2	2	YES	AC(DC)

LX5V Series



PLC Model	I/O	Output type	Dimension (mm)	Pulse Counter	E-CAM	Pulse Output	RS485	BD Board	Module	Power Supply
LX5V-1412MT-A	14 / 12	Transistor	137x107x87	8	YES	4	2	1	YES	AC
LX5V-1616MT-A	16 / 16	Transistor	175x107x87	8	YES	8	2	2	YES	AC
LX5V-2416MT-A	24 / 16	Transistor	175x107x87	8	YES	8	2	2	YES	AC
LX5V-2424MT-A	24 / 24	Transistor	220x107x87	8	YES	8	2	2	YES	AC
LX5V-3624MT-A	36 / 24	Transistor	220x107x87	8	YES	8	2	2	YES	AC

PLC SPECIFICATIONS

General



	LX3V Series	LX3VP Series	LX3VE / 3VM Series	LX5V Series
Running Mode	Round Scan/ Interrupt			
Programming	Instruction List/ Ladder			
Total Instructions	Basic Instructions: 27 / Applied Instruction: 138		Applied Instruction: 140	Basic Instructions: 27 / Applied Instruction: 170
Execute time	Basic Instructions: 0.06us / Applied Instruction: 1~10us			Basic Instructions: 0.01-0.03us
System Storage	16K	64K	32K	48K / 512KB
Download/ Monitoring	Serial Programming Cable(Serial Port) /Mini USB			
High Speed Pulse Output	Transistor: 2 channels (4 channel optional) / Relay N/A (2 channel optional)			Transistor: 8 channels / 200K
External Interrupt	6 Channels			100 Channels
Timer Interrupt	3 Channels			100 Channels, Interruption time (min): 0.1ms
High Speed Input Single Phase	2 channels 200K, 4 channels 5KHZ			8 Channels 150KHZ
High Speed Input AB Phase	1 channel 100K, frequency modes:1/2/4 times: 1 channel 5KHZ		8 Channels 100KHZ frequency modes:1/2/4 times	
Holding Addresses	Adjustable			
Storage	FLASH			
Filter	For all X input terminals			
Serial Port	COM1: RS422 or RS485 COM2: RS485			
Temperature	Working Temperature : 0 ~ 55°C / Storage Temperature : -20 ~ 70°C			
Humidity	5~ 85%RH (Without condensation)			
Shock Resistance	JISC0040 Standard			
Influence Immunity	Meet the IEC61000-4-4 and GB/T 17626.4 standard: Noise voltage amplitude 1KVP-P , pulse width 10us, period 0.3 s, edge time 5ns , duration 1min.			

Output



Item	Relay Output	Transistor Output
Output Mode	--	NPN
Input Power Supply	DC 24V	DC 24V
Output Circuit	<AC 250V or <DC 30V	DC 5~30V
COM Port Current	--	<0.1mA (DC30V)
Insulation	Mechanistic	Optical Coupling
Leak current	--	0.1mA/DC30V
Min.Load	--	DC 5V2mA
Max. Load	Resistive	2A point 8A COM port 0.5A point 0.8A COM port 0.3A HSPO point
	Inductive	80VA 12W/DC 24V7.2WHSP0 point
	General	100W 0.9W/DC 24V
ResponseTime	ON	<0.2ms
	OFF	<10ms (Pulse out put terminal: ~5us)

PLC SPECIFICATIONS

AC Power Supply



Item	LX3V/LX3VP/LX3VE/LX3VM (<26 I/Os)	LX3V/LX3VP/LX3VE/LX3VM (>26 I/Os)
Voltage	AC 85~265V 50 ~ 60Hz	
Power Outage Time	10ms	
Rush Current	<15A 5ms / AC 100V; <30A 5ms / AC 200V	
Power Fuse	250V 3.15A	250V 3.15A
Power Consumption	<35W	<60W
Power Output	DC 24V 850mA	DC 24V 700mA

DC Power Supply



Item	LX3V/LX3VP/LX3VE/LX3VM PLC
Power Supply	DC 24V±10%
Power Outage Time	10ms
Power Fuse	250V 3.15A
Rush Current	<15A 1ms/DC 24V
Power Consumption	<30w(Not include the external power supply for modules)

EXPANSION MODULE

PLC Expansion Module



Module	Specification	Module	Specification
LX3V-8EX	8 Input	LX3V-2WT	2 * Weighting(24-bit)
LX3V-8EYR	8 Relay Output	LX3V-2WT-L	2 * Weighting(18-bit)
LX3V-8EYT	8 Transistor Output	LX3V-4AD	4 * Analog Input
LX3V-16EX	16 Input	LX3V-4DA	4 * Analog Output
LX3V-16EYR	16 Relay Output	LX3V-4PT	4 * Thermal Resistance Input
LX3V-16EYT	16 Transistor Output	LX3V-4TC	4 * Thermocouple Input
LX3V-1WT	1 * Weighting(24-bit)	LX3V-4LTC	4 * TC with Isolation (PID Control)
LX3V-1WT-L	1 * Weighting(18-bit)	LX3V-8ITC	8*Thermocouple Input
LX3V-4PGA	4* pulse generator (Advanced)	LX3V-4PGB	4* pulse generator (Basic)
LCM-16EX	16 Input, supports RS485 Modbus communication	LCM-16EYR	16 Relay Output, supports RS485 Modbus communication.
LCM-4TC	4*thermocouple Input, supports RS485 Modbus communication.	LCM-2WT	2*weighing expansion module, 24-bit resolution, supports RS485 Modbus communication.