



SANILAC COUNTY



SHERIFF'S OFFICE

Paul D. Rich
Sheriff

2020 ANNUAL REPORT

"Service through Professionalism, Respect, Integrity, Dedication, and Excellence"

www.sanilacsheriff.org



TABLE OF CONTENTS

Mission Statement, Vision Statement & Values.....	2
Message from the Sheriff.....	3
Organizational Structure.....	4
Financial Summary.....	5
Celebrating 170 years of Service to Sanilac County	6-8
Corrections Division.....	9
Revenue from Jail Bed Rental Program.....	10
Inmate Population Information.....	11
Work Crew Program.....	12
Uniform Services Division.....	13
Calls for Service.....	14-15
Crime Statistics.....	16-18
Traffic Crashes.....	18

2020 RETIREMENTS

Detective Mark E. Ruggles
Undersheriff Bradley A. Roff
Sheriff Garry M. Biniecki
K-9 Deputy Baki

Thank you for your Service!

Our Mission

The Mission of the Sanilac County Sheriff's Office continues to be exemplified through dedicated service as, "Every member is to consistently seek and find ways to affirmatively promote, preserve and deliver a feeling of security, safety and quality services to members of our community.

Our Vision

Our Vision is to continuously build for a safer future through effective partnerships consisting of local government, emergency services, volunteer organizations and the citizens of Sanilac County to save lives, protect property and maintain highly trained professional and accountable law enforcement personnel.

Values

- **P Professionalism**
We are proud of our profession and will ensure that our members are dedicated, highly trained and capable of handling the daily demands of the law enforcement profession. We promote a collaborative environment for sharing information, resources, assistance and expertise.
- **R Respect**
We will treat all people with compassion, tolerance and dignity by providing professional law enforcement services through highly trained personnel accountable to our community.
- **I Integrity**
We adhere to the highest moral and ethical standards. Honesty and sincerity serve as the foundation in dealing with each other and the community. In all we do, we have the courage and commitment to uphold these values.
- **D Dedication**
We are dedicated to protecting life, property, and maintaining order while assuring fair and equal treatment to everyone. We are dedicated to ensuring our community is provided with professionalism, meaningful responses, and quality service.
- **E Excellence**
We strive to maintain the highest standards of training and technology to create a safe environment to our citizens and to ensure that the citizens of this community receive the best care when we are called upon to perform our duties.

A MESSAGE FROM THE SHERIFF...

March 18, 2021

Dear Sanilac County residents,

This annual report is just a glimpse of the hard work performed every day by our dedicated and professional staff. Our Office takes great pride in the many outstanding accomplishments and professional services that are provided by the men and women of the Sanilac County Sheriff's Office.



The Sanilac County Sheriff's Office in 2020, under the leadership of then-Sheriff Garry M. Biniecki, was impacted by the Covid-19 pandemic. Changes in services were made to ensure the health, safety, and wellness of the staff, inmates, and the public and are still in effect today. Despite changes in operations due to the impacts of Covid-19, our team remains dedicated to providing quality services to our residents.

On January 1, 2020, the Sheriff's Office began its 170th year of service. The Sheriff's Office has a rich history dating back to 1850 when the first recorded Sheriff, Silas Bardwell, took office after the County government was fully organized on December 31, 1849.

As our office continues to move forward in 2021, our office will continue the Sheriff's Office's Mission to consistently seek and find ways to affirmatively promote, preserve and deliver a feeling of security, safety, and quality services to members of our community.



Respectfully,

Handwritten signature of Paul D. Rich.

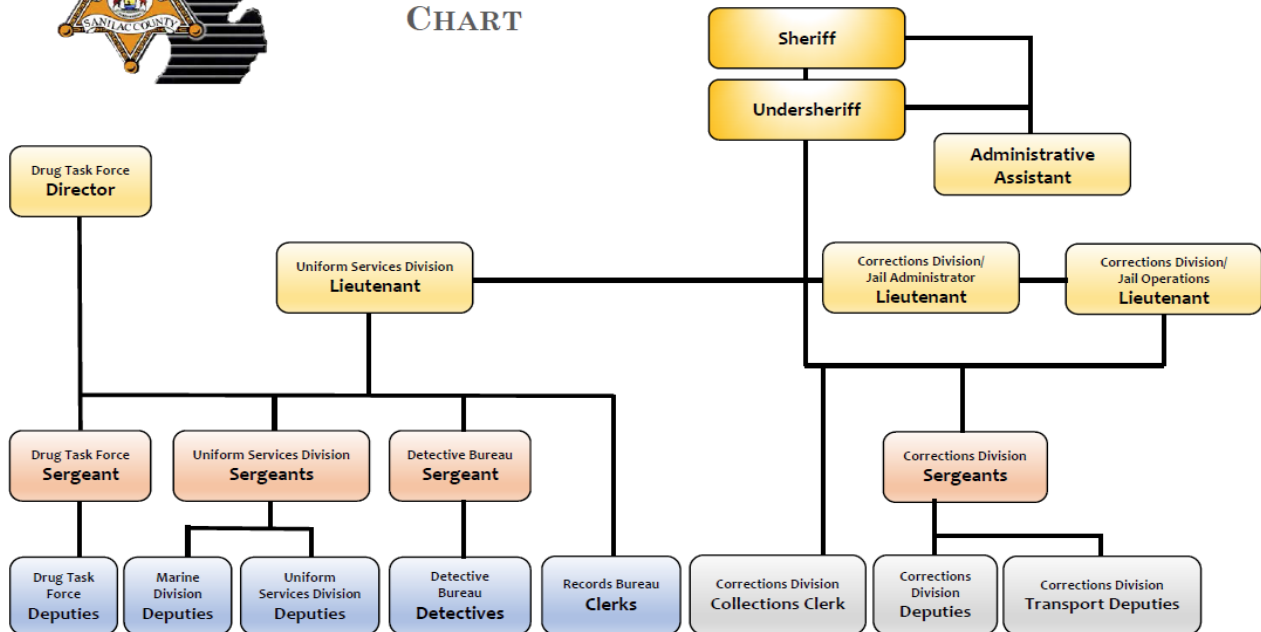
Paul D. Rich,
Sheriff

ORGANIZATIONAL STRUCTURE

The Sanilac County Sheriff's Office is organized into two primary divisions: the Uniform Services Division and the Corrections Division. Each Division serves individual and interrelated functions with the Sheriff's Office. The Sheriff's Office is also supported by many volunteers who help make up some special units such as the Dive Team, Victim Services Unit, Aero Unit, Sheriff's Posse, and Search & Rescue.



ORGANIZATIONAL CHART



Version: 01/01/2021

CURRENT STAFFING AND OPERATIONAL LEVELS:

ADMINISTRATION			3	2020			
Sheriff	1						
Undersheriff	1						
Administrative Assistant	1						
UNIFORM SERVICES DIVISION			23	CORRECTIONS DIVISION			37
Lieutenants	1			Jail Administrator/Lieutenant	1		
Sergeants	4			Asst. Jail Admin/Lieutenant	1		
Deputies	13			Sergeants	5		
Deputies (Part-Time)	1			Corrections Deputies	20		
Court Bailiffs	4			Corrections Deputies (Part-time)	4		
K-9's	1		K-9's	1			
			Transport Deputies (Part-time)	4			
			Collections Clerk	1			
DETECTIVE BUREAU			3	RECORDS DIVISION			3
Detective/Sergeant	1			Records Clerk II	1		
Detectives	2			Records Clerk I	1		
			Records Clerk I (Part-Time)	1			
DRUG TASK FORCE			6	MARINE DIVISION			3
Director	1			Seasonal Deputies (Part-Time)	3		
Administrative Assistant	1						
Enforcement Sergeant	1						
Deputy/Investigators	3						

Not Included: Volunteer Support Services such as: Dive Team, Aero Squad, Search and Rescue, Sheriff's Posse and Victims Services

2020 BUDGET SUMMARY

Overview

The Sheriff's Office works diligently to find ways to save money and lessen the burden on our taxpayers. As a part of county government, we strive to work with other elected and appointed officials to maintain the County's positive financial outlook while consistently providing for the public's well-being and safety.

2020 Sheriff's Office Budget

\$5,223,857

Savings as a part of County Government

The following are the funds transferred to/from the general fund from Sheriff's Office.

Sheriff's Uniform Services	\$ 112,059
Sheriff's Corrections	\$ 238,756
Sheriff's Diverted Felon Revenue	<u>\$ 49,705</u>
Total Operation Savings	\$ 400,520

Sheriff's Revenue Bed Rentals

United States Marshal Service Intergovernmental Agreement

- 2020 Projected Revenue \$2,694,000
- 2020 Actual Revenue \$2,323,886
- Under Projected \$ 370,114

***We did not meet our projected revenue for 2020 due to Covid-19 restrictions*

Total Funds Returned to Sanilac County General Fund in 2020

\$ 30,406



The Sanilac County Sheriff's Office has a rich history dating back to the year 1850 when the first recorded Sheriff, Silas Bardwell took office after the county government was fully organized. In the 1850's it was not uncommon for Sheriffs to appoint Deputies who reside throughout the county to help provide law enforcement in those areas. Today Sanilac County remains geographically the largest county in the lower peninsula of Michigan and has a total area of 1,590 square miles, of which 963 square miles is land and 627 square miles (39%) is water.



Celebrating 170 Years

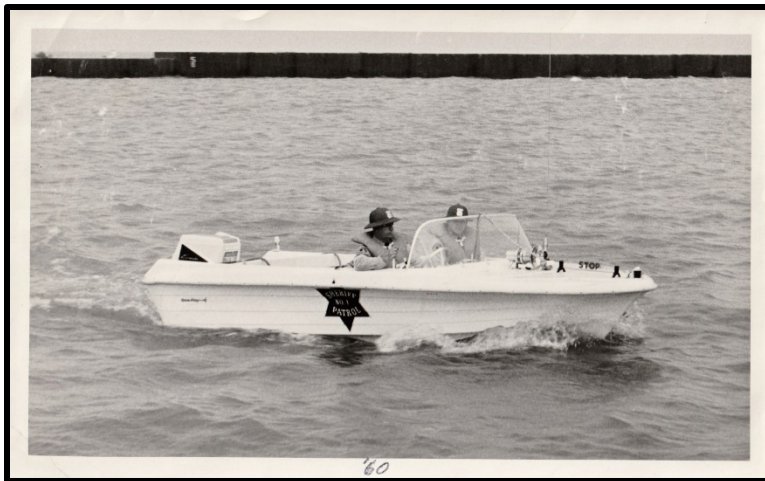
1850 to 2020



Sanilac County Jail Circa 1909



Sanilac County Jail Circa 1950-60s



Marine Division Circa
1960

Unknown Year (Left)



Unknown
Deputy;
Unknown
Year
(Right)



Uniform Patches
from years past (Right)



Thank you for 170 years!
We could not do what we do without the support of our Community!

CORRECTIONS DIVISION



2020 REPORT

The Sanilac County Corrections Division is committed to the protection of the citizens of Sanilac County by assuring we are adhering to up-to-date operational security standards of our Jail facility, providing safe, humane treatment of all persons housed within our facility, and providing opportunities for participation in programs which assist in providing skills for reentry as a citizen of this community.

Jail Administrator

Lieutenant John Moody
2019-Present

Jail Operations

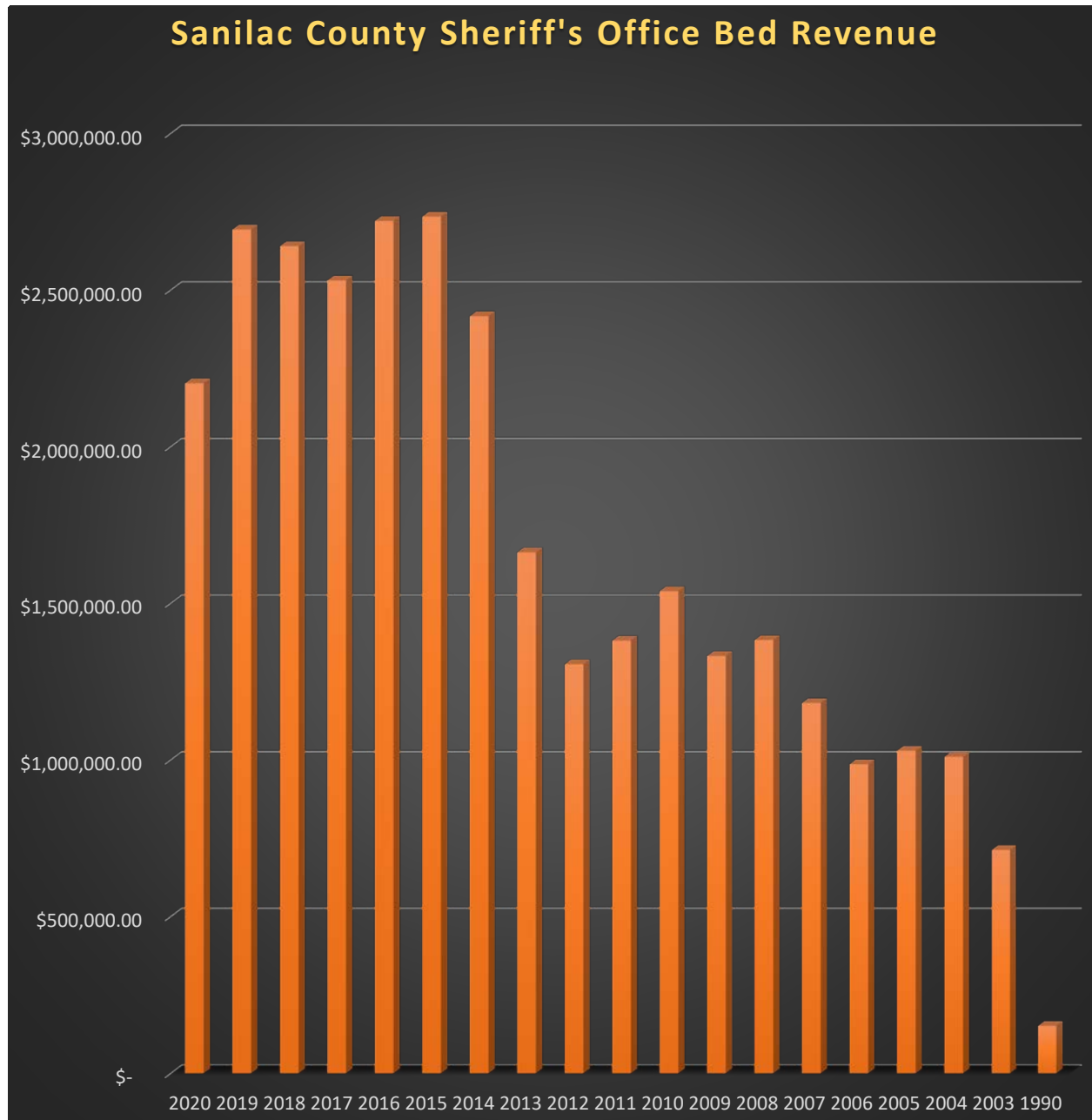
Lieutenant Ryan McConnachie
2019-Present

Operations Sergeants

Sergeant John Darling
Sergeant Nichole Keinath
Sergeant Monique Tank
Sergeant Tracy Kensley
Sergeant Aaron Morden

REVENUE FROM JAIL BED RENTALS

The Sanilac County Sheriff's Office has a long history of renting jail beds to outside agencies to include the United States Marshals Service, since 2002. In April 2013, we opened the jail addition that was built on our existing facility. Since the addition opening, the County has seen an increase in bed rental revenues of over 1 Million dollars per year. Since the 1990 bed rental started, the Sheriff's Office has brought over 34 Million dollars in revenue.



In 2020, the Covid-19 pandemic greatly impacted the revenue generated from Jail bed rentals. The number of inmates was down due to facilities' restrictions for our current inmate population's health, wellness, and safety.

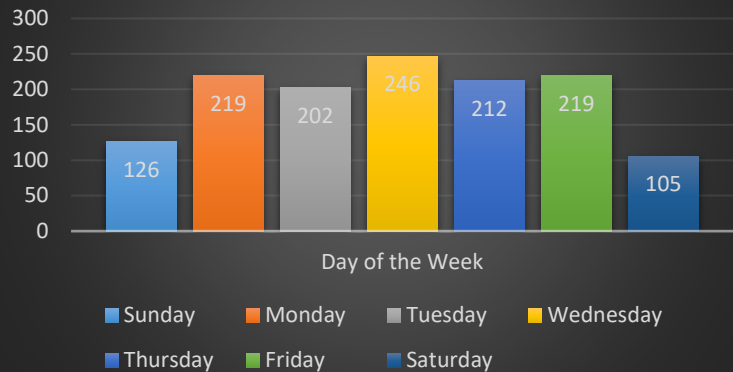
Jail Operations

The Sanilac County Jail is staffed by Corrections Deputies, Supervisors, Command Officers and Support staff. These individuals are responsible for the care and custody of all prisoners, the well-being of staff, and maintaining security and order within the jail facility.

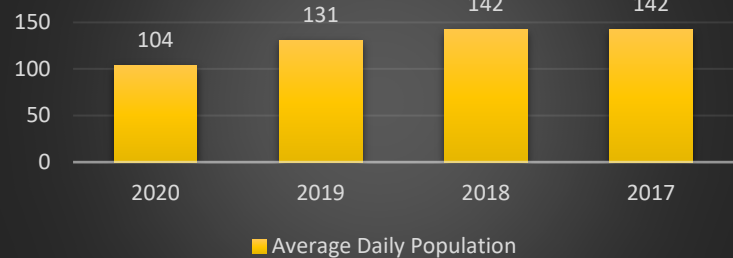


In 2020, a total of 1,329 new inmates were booked into the Sanilac County Jail. That number consisted of 1,074 males and 255 females.

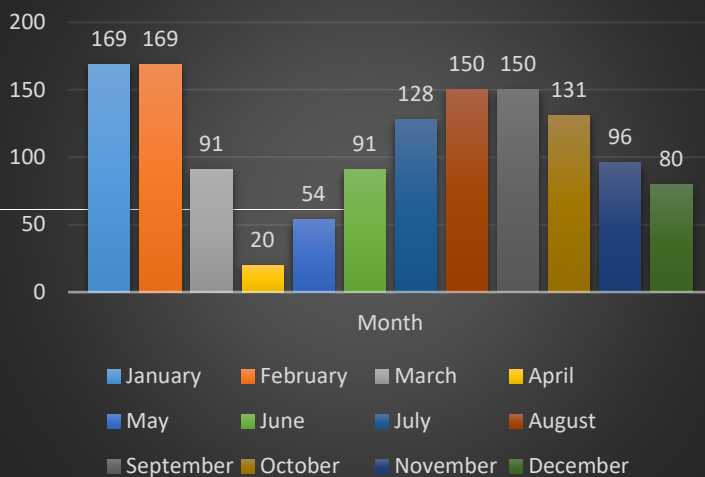
Bookings - By Day of the Week



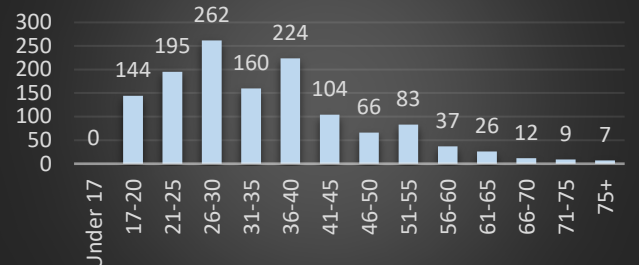
Average Daily Population



Bookings - By Month



Bookings - By Age



Work Crew Program

The Sanilac County Sheriff's Office Inmate Work Crew Program has been an effective service-oriented program. The Sanilac County Work Crew has donated countless hours assisting the local communities to include the following:

- Annual Local Cemetery Clean-ups
- Maintenance – Including Sanilac County Buildings, Properties, and Foreclosures
- Maintenance – Sanilac County Historical Museum & Grounds
- Municipal Hall Clean-up and Maintenance, Detailing Fire & DPW Equipment
- Public Area Beach and Breakwater Clean-ups
- Critter Control Clean-up
- Assist with Local 501 (c)(3) Charity and/or Church Fundraisers

FACT:

In the past three years the Work Crew Program has performed over \$100,000.00 worth of work, assisting local community projects and clean-up efforts.

Estimated Work Performed in Dollars since 2011

\$520,000.00

Example of the work that is done....

Delaware Township



City of Marlette (before)



City of Marlette (after)



CRITTER CREW PROGRAM:

Throughout the year, the Sanilac County Sheriff's Office Inmate Work Crew conducts what we call "Critter Control." The Work Crew's efforts entail traveling throughout the County, picking up deceased animals (Deer, Skunk, Raccoons, etc.) from the county and state roadways.

UNIFORM SERVICES DIVISION



2020 REPORT

Division Lieutenant

Lieutenant Nathan L. Smith
2019-Present

Sergeants

Detective/Sergeant Steven McKenney
Sergeant Shelly Park
Sergeant Matthew Armstrong
DTF Sergeant Micheal Moore
Sergeant Christopher Kravitsky
Sergeant Ronald Edington

What we do....

Responsibilities

The Uniform Services Division's primary responsibility is to provide the highest quality of law enforcement services to Sanilac County citizens and visitors.

Services

The Uniform Services Division is comprised of 1 Lieutenant, 6 Sergeants, and 14 Deputies. We provide 24/7 law enforcement services to the community, responding to over 15,000 calls for service annually. The Uniform Services Division staff and volunteers also provide supplemental specialized services such as Traffic Crash Investigation, Dive/Rescue, Marine, Traffic Enforcement, K-9, Aero, Search & Rescue, and more. The Detective Bureau, 4 Drug Task Force Assigned Personnel, Records Bureau, Marine Division, and Special Units are part of the Uniform Services Division however have their own assigned staff and responsibilities.

CALLS FOR SERVICE

Below you will find a five (5) year history relating to "Total Calls for Service." These totals reflect Calls for Service handled by the Uniform Services Division.



Summary of Calls for Service Type

Calls for Service Type	Number of Incidents	Calls for Service Type	Number of Incidents
Abandoned 911	49	OWI	37
Abandoned Vehicle-96001	103	Paper Service-99010	108
Accident-93000	1339	Parking Violation-93004	1
AERO	3	PAV	13
Alarm, False-94000	240	Private Prop Accident	4
All Other Accident -97000	65	Public Peace	14
Animal Violations - 9805	394	Public Relations - 9900-7	92
Arson-20000	2	Recovered Stolen Vehicle	1
Assault-13000	59	Retail Fraud-30000	3
Assist-Medical - 99015	115	Robbery-12000	1
Breaking & Entering-22000	25	Sex Offenses - 36000	7
Civil Matter-98006	246	Sexual Assault-11000	17
Civil Rights - 56000	1	Stalking-13003	136
Conservation-62000	20	Stolen Property-28000	6
Department Assist	100	Suicide (includes att.) 99001	28
DHHS Referral	57	Suspicious Situation-98007	804
Disorderly Conduct-53000	9	Traffic Misd.-54000	3
Domestic Assault	93	Traffic Offense	5732
Embezzlement-27000	1	Trespassing (invol Privacy) 57000	34
Famly Trouble	165	UDAA-24001	10
Fire-95000	43	Vagrancy-63000	1
Flee & Elude	5	Vessel Stops	15
Follow Up	522	Vessel Tow	20
Found Prop(includes lost)-98008	22	VPHC-35000	20
Fraud-26000	89	Warrant Pickup	41
General Assist-99008	3824	Weapons Offense-52000	5
General Non-Criminal-99009	18	Total:	15,240
Hazmat	23		
Health and Safety-55000	1		
Insanity	42		
Inspections-98000	52		
Juvenile-70000	29		
K-9 - 99016	5		
Larceny-23000	76		
MDOP-29000	77		
Mental Health Transport-99012	26		
Missing Person-99003	16		
Natural Death-99002	19		
Obstruct Justice-50000	60		
Obstruct/Hinder Police-48000	4		
Open Burn	1		
Ordinance Violation	23		
Overdose	23		
Overdose/Poisoning Accidental	1		

CRIME STATISTICS

Each year law enforcement agencies throughout Michigan must report crime data to the State of Michigan via Michigan Incident Crime Reporting (MICR). The comprehensive MICR reporting data in the below report is specific to Sanilac County and reflects all Crime Data reported as occurring within Sanilac County and reported by all Sanilac County Law Enforcement Agencies, including the Michigan State Police – Caro Post. Although MAJOR crimes such as Murder have increased in recent years, the overall crime rate in Sanilac County is down.



Summary of Offenses

County: Sanilac

Date Range: 01/01/2020 - 12/31/2020

(Incomplete incidents are not included.)

All data is reflective of the date range selected.



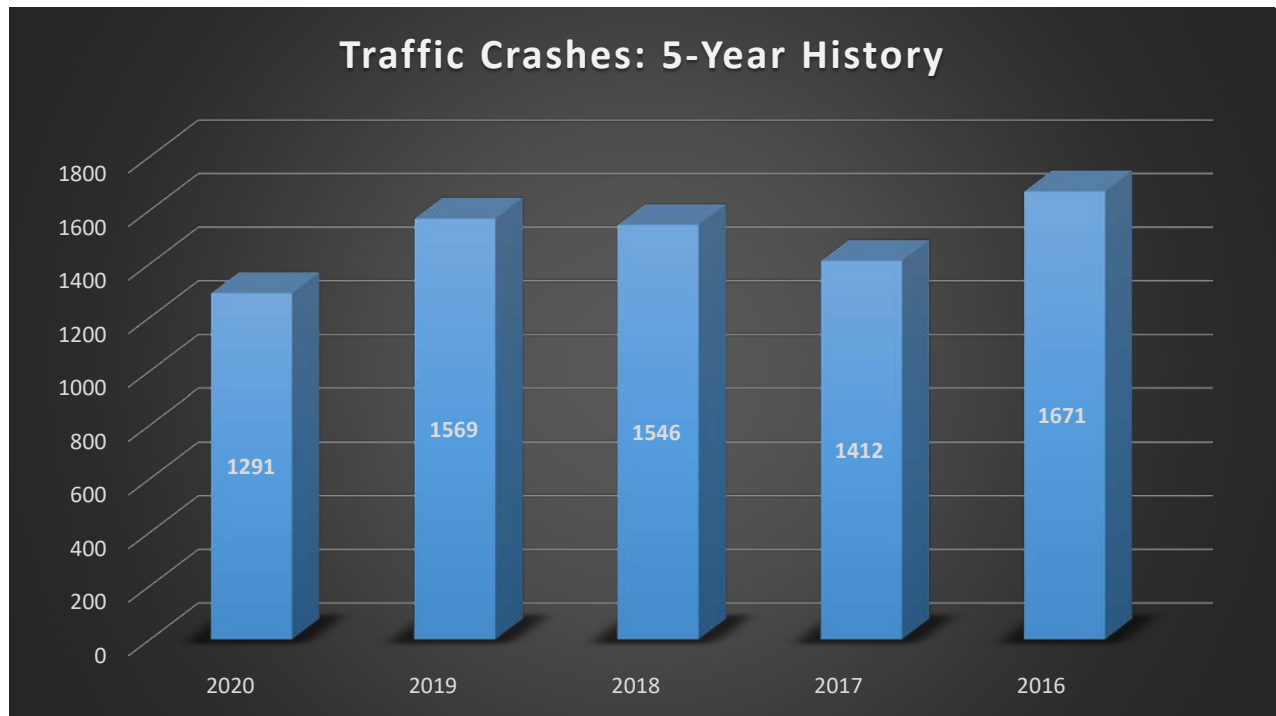
File Class	File Class Description	Number of Offenses		
		Total Attempt	Total Complete	Grand Total
03000	Immigration	0	1	1
09002	Negligent Homicide/Manslaughter (Involuntary)	0	1	1
10001	Kidnapping/Abduction	0	2	2
11001	Sexual Penetration Penis/Vagina CSC 1st	0	19	19
11002	Sexual Penetration Penis/Vagina CSC 3rd	1	1	2
11003	Sexual Penetration Oral/Anal CSC 1st	0	4	4
11005	Sexual Penetration Object CSC 1st	0	3	3
11007	Sexual Contact Forcible CSC 2nd	0	6	6
11008	Sexual Contact Forcible CSC 4th	0	10	10
12000	Robbery	0	1	1
13001	Nonaggravated Assault	0	162	162
13002	Aggravated/Felonious Assault	0	46	46
13003	Intimidation/Stalking	0	25	25
20000	Arson	0	3	3
21000	Extortion	0	3	3
22001	Burglary Forced Entry	0	38	38
22002	Burglary Entry Without Force (Intent)	0	9	9
22003	Burglary Entry w/out Authorization w/or w/out Force	1	11	12
23002	Larceny Pursesnatching	0	1	1
23003	Larceny Theft from Building	0	10	10
23004	Larceny Theft from Coin Operated Machine/Device	0	1	1
23005	Larceny Theft from Motor Vehicle	1	34	35
23007	Larceny Other	0	77	77

File Class	File Class Description	Number of Offenses		
		Total Attempt	Total Complete	Grand Total
24001	Motor Vehicle Theft	0	17	17
25000	Forgery/Counterfeiting	0	2	2
26001	Fraud False Pretense/Swindle/Confidence Game	0	42	42
26002	Fraud Credit Card/ATM	0	4	4
26003	Fraud Impersonation	1	2	3
26006	Fraud Bad Checks	1	11	12
26007	Fraud Identity Theft	0	9	9
27000	Embezzlement	0	3	3
28000	Stolen Property	0	3	3
29000	Damage To Property	0	117	117
30002	Retail Fraud Theft	0	23	23
30003	Retail Fraud Refund/Exchange	0	1	1
35001	Violation of Controlled Substance	0	47	47
35002	Narcotic Equipment Violations	0	4	4
36003	Peeping Tom	0	1	1
36004	Sex Offense Other	0	10	10
37000	Obscenity	0	1	1
38001	Family Abuse/Neglect Nonviolent	0	31	31
38003	Family Other	0	26	26
41002	Liquor Violations Other	0	14	14
42000	Drunkenness	0	1	1
48000	Obstructing Police	0	27	27
49000	Escape/Flight	0	2	2
50000	Obstructing Justice	4	149	153
52001	Weapons Offense Concealed	0	9	9
52003	Weapons Offense Other	0	14	14
53001	Disorderly Conduct	1	33	34
53002	Public Peace Other	0	32	32

File Class	File Class Description	Number of Offenses		
		Total Attempt	Total Complete	Grand Total
54001	Hit And Run Motor Vehicle Accident	0	3	3
54002	OUIL or OUID	0	91	91
55000	Health And Safety	15	25	40
57001	Trespass	0	16	16
57002	Invasion of Privacy Other	0	6	6
58000	Smuggling	0	1	1
62000	Conservation	0	9	9
70000	Juvenile Runaway	1	9	10
73000	Miscellaneous Criminal Offense	0	9	9
Summary of Offenses Totals :		26	1,272	1,298

Traffic Crashes

Below you will find a five year traffic crash data history for Sanilac County.



**There was an 18% reduction
in overall traffic crashes
from 2019 to 2020**