



**Mobile Area Interfaith Conference, Inc.**

## **2018 Annual Report**

### **Introduction**

The Mobile Area Interfaith Conference (MAIC) is an Alabama nonprofit corporation with certification by IRS 501 (c) (3) as a charitable organization. MAIC as a collaboration of faith-based organizations and congregations on mission to encourage development of community resources to address unmet human needs. MAIC works with Christian, Jewish and Muslim communities and has representation from each on its board of directors and/or committees

MAIC has a 39-year history and is the subsequent organization that was founded in 1979 as the Conference of Downtown Churches. Involvement is available to persons of all faiths interested in working collaboratively to improve the lives of the underserved and marginalized. MAIC serves as a catalyst organization for systemic change to alleviate poverty by addressing community needs and building relationships that support social justice for all citizens.

### **Vision and Mission**

*The **vision** of MAIC is a just community which recognizes the inherent worth and dignity of all persons and collaborates to offer hope and opportunity.*

*The **mission** of MAIC is to empower the marginalized and build bridges in our community through advocacy, education, and service.*

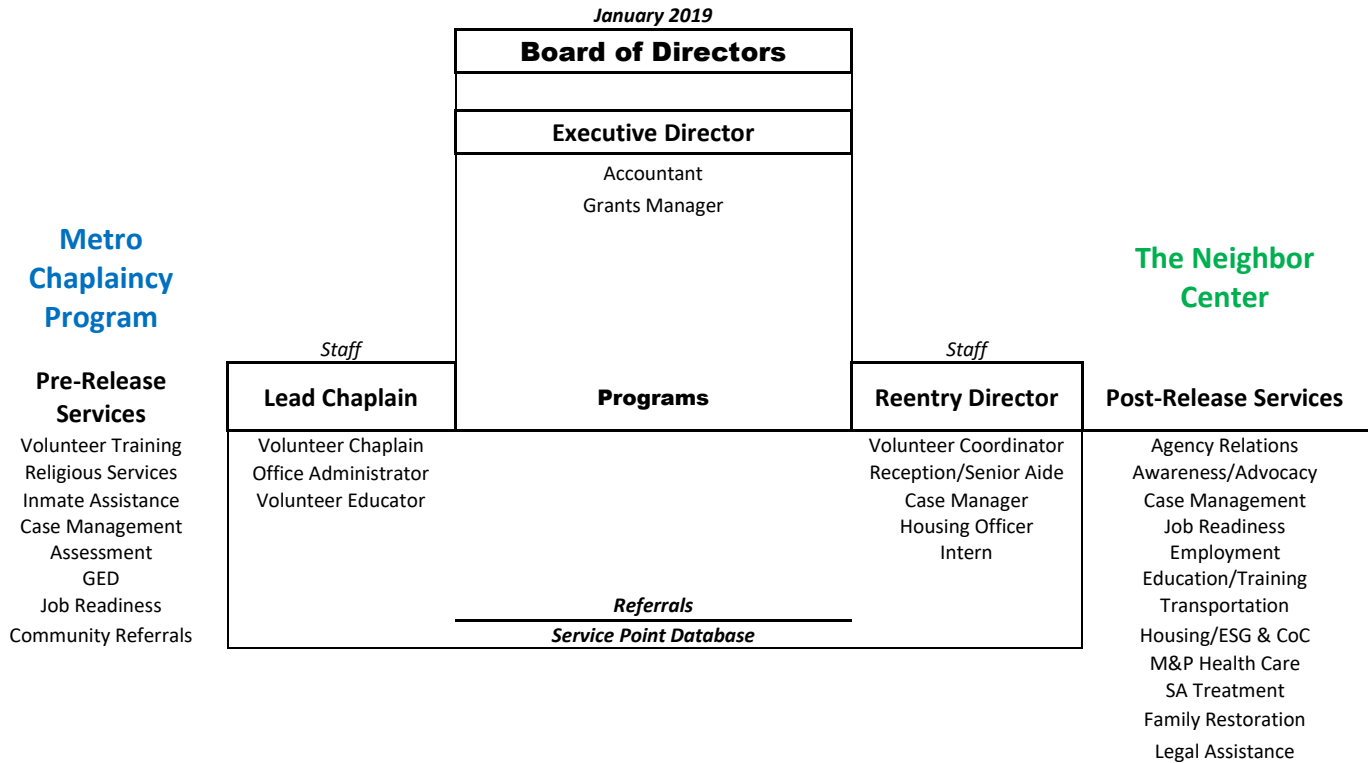
### **History**

- 1979 founded as the Conference of Downtown Churches, congregations working together to address unmet needs
- Instrumental in founding:
  - Loaves and Fish Soup Kitchen,
  - Food Bank / Feeding the Gulf Coast,
  - Homeless Coalition / Housing First, Inc.
- 2002 established Metro Chaplaincy Program
- 2005 incorporated as Mobile Area Interfaith Conference, serving persons of all faiths
- 2016 established The Neighbor Center reentry program
- 

**The Quest**  
**for Faith-Based Social Justice**

**Organization Structure**

**Mobile Area  
Interfaith  
Conference**



**2018 Board of Directors**

- |  |   |
|--|---|
| <i>President</i>   | <b>Demetrius Semien, M.Div., Ph.D.</b> , Spring Hill College                      |
| <i>Vice President</i>  | <b>Rev. Trey Doyle, Pastor</b> , First Baptist Church of Mobile                   |
| <i>Secretary</i>   | <b>J. McM. (Jim) Backes, Jr., PE</b> , retired, Hargrove Engineers & Constructors |
| <i>Treasurer</i>   | <b>James E. (Jamey) Sandifer, C.F.P.</b> , Investment Counselor                   |
| <b>Kenyen R. Brown, J.D.</b> , Attorney, Maynard Cooper & Gale     | <b>Chris R. Dodsworth, Ph.D.</b> , Spring Hill College                            |
| <b>Sandy Delchamps, Pastor</b> , City of Refuge for Men            | <b>Paul McLendon, M.Div.</b> , Volunteers of America SE                           |
| <b>Felecia Prince, B.A. &amp; Capt.</b> , Mobile County Metro Jail | <b>Patricia Rotella Silverman</b> , Community Volunteer                           |
| <b>Sherman C. Williams, Sr., B.A.</b> , Palmer Williams Group      | <b>Susan B Young, M.S.W.</b> , Community Corrections Cntr                         |

**2018 Administration**

- |   |  |
|---|--|
| <b>Dan A. Williams, M.S.W.</b> , Executive Director (volunteer) | <b>Ingrid Ramdeen</b> , Accountant, January – March 2018 |
| <b>Mickey Spann, M.Ed.</b> , Accountant. Mar – Dec 2018         | <b>Rachel Whiteley, B.A.</b> , Grants Manager            |

**2018 Metro Chaplaincy Team**

- |   |   |
|---|---|
| MAIC <b>Rev. Charles Fail, B.A., M.Div.</b> , Director                  | Volunteer Staff <b>Joe Kolb</b> , Chaplain          |
| <b>Rev. Alan Singleton</b> , Lead Chaplain                              | <b>Louise Wilber, M.Ed.</b> , Education Coordinator |
| <b>Trinitius Jackson, B.A.</b> , Chaplaincy Office Administrator        |   |
| Goodwill Easterseals/GED <b>Cyndi Thompson, B.A.</b> , Certified Tester | <b>Jonathan Braswell, B.S.</b> , Instructor         |

**2018 Neighbor Center Team**

- |   |  |
|---|--|
| <b>Gwendolyn Darty, M.S.W.</b> , Reentry Director                   | <b>Sr. Meg Kymes, DOC, B.Ed.</b> , Case Manager                      |
| <b>Marquis Westry, B.S.W.</b> , Housing Coordinator                 | <b>Viola Brown</b> , Receptionist                                    |
| <b>Cynthia McClain</b> , Senior Aide                                | <b>Mark Famuliner, B.A.</b> , Jesuit Volunteer, Aug 2017 – July 2018 |
| <b>Linda Hurm</b> , Developer and Volunteer Coordinator (volunteer) |  |
| <b>Lisa Williams, Ph.D., M.S.W. Intern</b> , Tulane University      |  |

## 2018 Goals

### 1. **Activate a Fund-Raising Committee**

In 2018, MAIC convened a Resource Development committee to ensure that all organizational and corporate fund-raising efforts are coordinated and productive. Board member Patricia Silverman, with assistance by development volunteer Linda Hurm, created a process for coordinating and supporting all fund-raising and resource development activities.

### 2. **Create an Executive Director Position**

A job description for a full-time and paid executive director was announced in October 2018 and sixteen candidates were considered. Six finalists were interviewed. An offer was made to Frank D'Alonzo, who accepted and agreed to begin his tenure January 7, 2019.

### 3. **Form a Reentry Advisory Consortium**

In recognition of the importance of developing community support of reentry as a faith-based mission, a humanitarian need and economic development issue, MAIC has committed to accepted responsibility for supporting a reentry advisory consortium and a reentry council. Both will be organized and initiated in 2019. The consortium will be composed of vested-interest representatives and the council will be reentry service providers who will meet monthly.

---

## Metro Chaplaincy Program



- Established in 2002
- Contract with Mobile County Sheriff's Office
- Chaplaincy complex in Metro Jail includes a chapel & classroom for inmates
- MAIC Chaplain and staff administrator responsible for coordinating pastoral, religious and educational services.
- Support provided by 39 congregations and 150 volunteers.
- Pre-release services include GED classes by Goodwill Easterseals, Celebrate Recovery and Fatherhood Initiative.

### **Congregational Volunteers**

3 Circle Church

Cathedral of the Immaculate Conception

Cedar Park Baptist Church

Center Point Assembly of God

Christ the King Catholic Church

City of Refuge for Men

Crimson Cross Ministries

Dauphin Way United Methodist Church

Homebase Christian Ministries

Jehovah's Witness Kingdom Hall

Life Church Mobile

Lilly Baptist Church

Luke 4:18 Fellowship

Mission of Hope

Mobile Masjid of A-Islam

Mobile Terrace Christian Center

Newness of Life Outreach Center

Orchard Assembly of God

People of Mars Hill Ministries

Revelation Baptist Church

Right Way Christian Center Church

St. Dominic Catholic Church

St. Joseph Catholic Church

St. Pius X Catholic Church

Way of Life Community Church

Wings of Life

Word of Life Community Church

**Kenny Davis Award:** Julie James was the 2018 recipient of the Kenny Davis Award by the Metro Chaplaincy program. Ms. James serves as the president of the "Promises of Life" Prison Ministry, founded by former volunteer Chaplain Bill Founds. She also is the founder of the "Gift of Love" Christmas Program that provides Christmas gifts for inmate children.

**2018 Statistical Report**

<b>Mobile County Metro Jail</b>	Official Capacity	1,200
	2018 Average Daily Census	1,570

<b>MAIC</b>	<b>2018 Trained Volunteers</b>		367	
	<b>Inmate Religious Services</b>	Attendance	Males	14,334
		Attendance	Females	3,692
		Baptisms		23
	<b>Programs</b>	<b>Fatherhood Initiative</b>		
		Attendance	Males	238
			Females	199
		<b>Celebrate Recovery</b>		
		Attendance	Males	234
			Females	261
<b>* GED</b>				
Students		Males	158	
	Females	128		
	Graduates	2018	22	
	Graduates	To Date	214	

\* General Educational Development /High School Equivalency Diploma  
 Certified instruction & testing by **Goodwill Easterseals of the Gulf Coast.**

**Weekly Schedule**      Males      Females

Venue	SUNDAY	MONDAY	TUESDAY	WEDNESDAY	THURSDAY	FRIDAY	SATURDAY
<b>CHAPEL</b>							
0830-0920	RELIGIOUS SERVICE	RELIGIOUS SERVICE	RELIGIOUS SERVICE	MANHOOD	RELIGIOUS SERVICE	RELIGIOUS SERVICE	RELIGIOUS SERVICE
0930-1020	RELIGIOUS SERVICE	RELIGIOUS SERVICE		MANHOOD	RELIGIOUS SERVICE	RELIGIOUS SERVICE	RELIGIOUS SERVICE
1400-1450	RELIGIOUS SERVICE	FATHERHOOD	RELIGIOUS SERVICE	MANHOOD	RELIGIOUS SERVICE	RELIGIOUS SERVICE	RELIGIOUS SERVICE
1500-1550	RELIGIOUS SERVICE	FATHERHOOD	RELIGIOUS SERVICE	RELIGIOUS SERVICE	RELIGIOUS SERVICE	RELIGIOUS SERVICE	RELIGIOUS SERVICE
1700-1750	RELIGIOUS SERVICE	RELIGIOUS SERVICE	ADDICTION RECOVERY	RELIGIOUS SERVICE	ADDICTION RECOVERY	FATHERHOOD	RELIGIOUS SERVICE
<b>CLASSROOM</b>							
0830-0920		GED	GED	GED	GED	GED	
0930-1020		GED	GED	GED	GED	GED	
1400-1450		GED			GED		
1500-1550		GED			GED		
1700-1750							
<b>BARRACKS</b>							
0830-0920							
0930-1020							
1400-1450	RELIGIOUS SERVICE (3/4)						RELIGIOUS SERVICE (1,3)
1500-1550							
1700-1750	RELIGIOUS SERVICE	RELIGIOUS SERVICE	ADDICTION RECOVERY	RELIGIOUS SERVICE	RELIGIOUS SERVICE	FATHERHOOD	

**Thanks for your service and the memories, Reverend Charles.**



The Metro Chaplaincy Program is one of several ministries founded or benefiting from Rev. Charles Fail in his chosen and still ongoing profession of faith. In 2002, while serving as the president of the Conference of Downtown Churches, now the Mobile Area Interfaith Conference, and in agreement with the Sheriff and Warden at Mobile County Metro Jail, he opened a chaplaincy office in the jail to serve inmates. That simple move eventually led to the construction of a jail chapel in 2005 and a classroom in 2013 for the GED program and other educational services. He was directly involved and development of the Metro Chaplaincy Program to become what it is today – recognized as unique as a local jail ministry supported by the greater faith community.

Other ministries have called Charles to service over the years and he is still compelled to respond. After sixteen years as a chaplain and director for the Metro Chaplaincy Program, his last day for direct involvement was December 31, 2018. He has agreed to remain available as an advisor with prayerful support for the jail ministry. MAIC thanks Charles for a job well done and for being a good and faithful servant.



**The Neighbor Center**

- Community-based reentry services for returning neighbors
- Available to former inmates from local, state and federal facilities
- Case managers and volunteers provide services and support
- Assistance helps secure housing, employment, education, job training, transportation, health care, treatment for mental health & addictions, legal services and address other needs and barriers
- Individual service goals are focused on financial stability that supports self-sufficiency thereby preventing reincarceration.

The name signifies “**neighbors helping returning neighbors.**” Returning neighbors voluntarily enroll for case management assistance and advocacy to access community resources in support of successful transition back to the community. The objective is to change the reentry environment by providing supportive relationships and facilitating the assistance needed to avoid reincarceration, and thereby promote public safety for all Mobile area citizens.



Returning neighbors seeking post-release services are entered in an online and confidential database network entitled **Service Point**. Case managers using this system must be licensed and clients must sign a release of information (ROI) form before personal information can be used in the case management process. This database system allows confidential referral to community and state-wide agencies involved with reentry activities. In addition to accessing services, this system allows tracking returning neighbors and provides an accurate determination of the recidivism rate for those receiving services through The Neighbor Center and the network of service providers.

Dr. Lisa Williams with Anger Management Class

	Alone/ Individuals	<u>Returning Neighbors</u> With Families	TOTALS
Metro Jail Pre-Release Interviews			88
Telephone Inquiries			824
<b>2018 New Clients</b>	169	34	<b>203</b>
<b>General Case Management &amp; Referrals</b>			
	<i>Duplicated Counts</i>		
Healthcare	12	1	13
Mental Health	6	1	7
Family Support	0	1	1
Food	6	12	18
Education	4	1	5
Identification	32	1	33
Transportation	47	0	47
Clothing	19	2	21
Employment	55	5	60
SOAR/SS&SSI	11	0	11
Household Items	4	7	11
Legal Aid	4	0	4
Phone Cards	2	0	2
<b>TOTALS</b>	<b>202</b>	<b>31</b>	<b>233</b>

Housing Assistance & Case Management	Returning Neighbors 53	Other adult/ Spouses 5	Minor Children 31
Total Served Neighbor Center 2016-2018	Returning Neighbors 338	Reincarcerated 80	Recidivism Rate 23.6%

**Data Sources:** Service Point Database; Mobile County Sheriff’s Office; Federal Bureau of Prisons; Alabama Department of Corrections; Mobile County Court Docket.

80 OF THE 338



Watch a 4-minute video of Patricia White’s story.

Go to <https://theneighborcenter.org/>,  
 Scroll down to **Our Neighbors' Stories**  
 Click on arrow and then click “Watch this video on YouTube.”



## THE ACADEMY for Job Readiness



In 2018, MAIC began the development of a program that is being implemented in Metro Jail and The Neighbor Center. The Academy for Job Readiness is a *holistic service strategy*, which is characterized by consideration of the whole person, taking into consideration mental and social factors, and using *transformational experiences* to set personal goals and acquire the *skills and self-confidence* necessary for becoming *self-sufficient* citizens. The objective is to provide a process for returning neighbors to help override thoughts and behaviors that led to criminal acts with new skills and protocols that *lessen the odds of reincarceration*.

### Enrollment

Enrollment will be voluntary and requires a triage assessment of physical, mental, behavioral and educational status. Treatment needs must be addressed as condition for enrollment but could be concurrent.

### Volunteer Coaches & Peer Mentors

Volunteers are being recruited and will be trained as coaches who will serve as personal trainers for the skills and discipline needed to succeed. Individuals who have sufficiently achieved reentry will be offered opportunities as volunteer peer mentors. Coaches and mentors will maintain supportive relationships that celebrate accomplishments.

### Supportive Employment

Academy students who are employed will receive ongoing services that will provide the support needed for retaining a job and advancement.

### Transitional Employment

Academy students will have on-the-job opportunities for adjusting to the requirements of employment and receiving wages for work performed.

### Curriculum

#### **Level 1: Assessment**

Criminogenic and job-readiness assessments; personalized plan for achieving goals.

#### **Level 2: Skillsets**

Individualized education plan (IEP); remedial education (pre-GED level courses, literacy, etc.), computer training, trade school, GED or high school equivalency education; opportunities for higher education.

#### **Level 3: Personhood**

Each student encouraged to envision and pursue a persona that contributes to recovery from past trauma and mistakes.

Techniques taught for social/emotional/anger management and learning new protocols and behaviors; experiencing a new way of living.

Opportunities provided for understanding spiritual interests and needs.

Classes on relationship skills, time management.

Development of personal style and appearance that supports goals, interests and self-expressions.

#### **Level 4: Financial Stability**

Strategies for securing and retaining employment or other means of financial support.

Classes on writing resumes, submitting applications, learning workplace protocols and preparing for job interviews.

Financial literacy and money management for sustaining self-sufficiency.

## Community Engagement



Linda Hurm, Mickey Spann, Sr. Meg, Rachel Whiteley and Gwen Darty

In 2018, MAIC continued as the primary coordinating organization for reentry activities in the Mobile Area. As a strategy for encouraging coordination for adult reentry services, **memorandums of understandings** (MOUs) were signed in June 2017 that serve as the basis for communications, planning and referrals for efficient use of existing resources and for further development of the reentry service infrastructure required to reduce recidivism.

### **Active MOUs**

Mobile County Community Corrections Center (Alabama Department of Corrections)  
Goodwill Easterseals of the Gulf Coast  
Legal Services Alabama  
Mobile County Metro Jail  
Southwest Alabama Partnership for Training & Employment

### **Letters Committing to Joint Collaboration**

AL Board of Pardons & Paroles	Bishop State Community College	Center for Fair Housing
City of Mobile, Public Safety	Franklin Primary Health Center	Housing First Inc., the Homeless Coalition
Lifelines Counseling Services	Mobile City Council	Mobile County Commission
Mobile Co Dept of Resources	Ozanam Charitable Pharmacy	The Salvation Army
Volunteers of America Southeast		

### **Reentry Simulation**



In agreement with the original sponsor of reentry simulation events, the U. S. Attorney's office for the Southern District of Alabama, MAIC has accepted responsibility for continuing these simulated exercises demonstrate the barriers and discouraging experiences of reentry. Each participant is assigned the role of a newly released inmate with typical circumstances and resources. Thirteen stations are set up in the room that mimic the resources needed and probable difficulties for accessing including: 1. Career Center/GED, 2. Church, 3. Counseling/ Treatment, 4. Courthouse, 5. Discount Medical Care, 6. Employer, 7. ID Station, 8. Plasma, 9. Probation, 10. Quick Loans & Pawn Shop, 11. Rent & Utilities/ Transportation, 12. Social Services/ Voc Rehab 13. Super Center/ Bank. A corner of the room serves as a jail for those arrested by two roving law enforcement officers who stop and interrogate the participants. The two-hour event ends with a de-briefing of participants who share their positive and negative experiences and how the exercise may have changed their opinions about reentry. Simulation events are being scheduled for 2019.

### **The Southwest Alabama Reentry Strategic Plan**

"Charting the Way Home" is a published reentry strategic plan for Southwest Alabama that focuses on the Mobile area. It was developed over a two-year period by the Project HOPE Reentry Task Force that was organized by the former U. S. Attorney for the Southern District of Alabama, Kenyen Brown, and chaired by State Senator, Vivian Davis Figures. To ensure continuation of regional strategic planning for improving reentry efforts and services, and to reduce recidivism, the MAIC board has accepted responsibility for updating and coordinating implementation of the plan. A new community Reentry Consortium is being formed in 2019 to assist, advise and evaluate progress with reentry strategic planning.



## 2018 Financial Statement

### Mobile Area Interfaith Conference

Unaudited

INCOME	MAIC	Metro	Neighbor	Unaudited
	Administration	Chaplaincy	Center	Dec 31 2018 YTD
Administration Fees	40,530.59	-11,251.20	-29,279.39	-
Client Assistance Fund			23,704.62	23,704.62
Congregations/Sponsors/Donations	6,021.49	22,988.00	40,220.40	69,229.89
Fund Raising Events		13,000.00		13,000.00
Grants & Contracts		72,600.00	256,230.43	328,830.43
<b>Total Income</b>	<b>46,552.08</b>	<b>97,336.80</b>	<b>290,876.06</b>	<b>434,764.94</b>

EXPENSES	MAIC	Metro	Neighbor	YTD
	Administration	Chaplaincy	Center	
Accounting/Audit/Bank	3,136.68	19.25	135.12	3,291.05
Client Assistance			13,773.29	13,773.29
Fundraising/Development	1,188.75	2,110.10	3,924.49	7,223.34
Dues and Subscriptions	1,535.34		1,339.86	2,875.20
Furniture & Equipment		524	12,595.27	13,119.27
Housing Assistance CoC & ESG			98,878.58	98,878.58
Insurance			3,118.00	3,118.00
Internet/Phone		2,250.00	3,436.22	5,686.22
IT Services		3,845.00	1,750.00	5,595.00
Office Costs: Lease/Utilities/Maint	125		30,313.42	30,438.42
Office Supplies	1,395.42	2,513.49	8,090.06	11,998.97
Other/Miscellaneous	207.99		482.5	690.49
Payroll Expenses	27,462.55	88,730.30	86,542.98	202,735.83
Program Supplies	118.79	5,042.34	798.62	5,959.75
Transportation: Vehicles & Mileage	240.57	362.07	6,314.53	6,917.17
<b>Total Expense</b>	<b>35,411.09</b>	<b>105,396.55</b>	<b>271,492.94</b>	<b>412,300.58</b>
<b>2018 Net</b>	<b>11,140.99</b>	<b>-8,059.75</b>	<b>19,383.12</b>	<b>22,464.36</b>
<b>2017 Carryover Funds</b>	<b>-2,272.35</b>	<b>7,723.57</b>	<b>25,059.78</b>	<b>30,511.00</b>
<b>2018 Estimated (unaudited) NET</b>	<b>8,868.64</b>	<b>-336.18</b>	<b>44,442.90</b>	<b>52,975.36</b>

MAIC	Metro	Neighbor	YTD
Administration	Chaplaincy	Center	Dec 31 2018
			Unaudited

### Presidents' Message

It has been a pleasure to serve as President of the Board of Directors of the Mobile Area Interfaith Conference (MAIC) for the past two years. MAIC performs a valuable service for the citizens of Mobile and its surrounding areas. We have a rich, successful history of bringing together people of all faiths to address unmet needs of our community, such as hunger and homelessness. As President, it was my charge to steer the Board of Directors and assist our volunteer Executive Director, Dan Williams, with our plans to focus on strengthening reentry efforts.

Currently, MAIC assists with rehabilitation efforts to help reduce the recidivism rate. We assist people who have been incarcerated to transition back into society and become productive citizens. Our "pre-release" reentry programs began in 2002 with the leadership and vision of Reverend Charles Fail. He oversaw MAIC efforts to develop the Chaplain's Office at Metro Jail and, in subsequent years, to offer volunteer-led GED services. These programs address spiritual and educational needs and prepare inmates at Metro Jail to meet challenges they will face, such as securing employment, upon their release. MAIC started The Neighbor Center as our "post-release" program in 2016. We offer case management services and address transportation, housing and other needs, as we assist men and women, our "neighbors," who have been previously incarcerated.



**Dr. Demetris Semien, 2018 President**

I moved here in 2014 to serve as an Assistant Professor of Sociology and Criminology at Spring Hill College. Since 2004 I have worked with community members in North Carolina, Kentucky, and Ohio to support men and women during their transitions from jails and prisons back into society. So, I was delighted to be invited to join the MAIC Board of Directors in 2015. It presented an opportunity to offer my experience, knowledge, and talents as we developed what has become the central community organization that collaborates with service providers, law enforcement officials, and other community members to coordinate reentry efforts in southwestern Alabama.

As a graduate of Yale Divinity School, I am also a theologian and believe faith leads us into action. So, serving with an organization where people from various faith traditions work together to address community needs is very important to me. I respond to my calling and support MAIC's mission to meet unmet needs in our community, especially as we support "returning neighbors."

Forgiveness and redemption are essential themes that relate to reentry efforts. Some people wonder why we help these people. "Aren't there more worthy people for us to focus on?" The biblical story of the Prodigal Son proves as a valuable guide for us when the elder son confronts his father. He says, "I have been faithful, where is my fatted calf? Where is my feast? Why do you prepare a banquet to celebrate my brother's return home after all the wrongs that he has committed?" The father responds, "Son, thou art ever with me, and all that I have is thine . . . make merry and be glad: for this thy brother was dead, and is alive again; and was lost, and is found." (Luke 15: 25-32). We also listen to our Father who calls us to rejoice in the victory that happens as we welcome our brothers and sisters back into our community. We can use our privilege, knowledge, and talents (our "divine gifts") to support them. Those who have been spiritually dead may be alive again. Those who are lost, may be found. God calls us to love our neighbors along their journey home.

My tenure as President ends with MAIC in a time of transition as we set our sights on our hopes for the future. Chaplaincy Director Rev. Charles Fail has officially retired. (For real this time!) We are forever indebted to him for his visionary service, time, and efforts. MAIC continues to help inmates at Metro Jail prepare to come back into society. The Neighbor Center has operated successfully for the past three years. We see even more clearly the link between our pre-release and post-release reentry programs. Jim Backes takes the helm as the new President of MAIC. His faith and business acumen will allow our nonprofit organization to remain strong and prosper. MAIC has been blessed to be in the economic position for the Board of Directors to take a major step forward and hire a full-time paid Executive Director. We are grateful to Dan Williams for the extraordinary gift of his time and professional talents as he volunteered to serve as our Executive Director for years. There is truly no way ever to repay him for this kindness. Now, the Board extends its hearty welcome to our new Executive Director Frank D'Alonzo. His experience with community relations, marketing skills, enthusiasm for reentry work, and endless ideas will help our organization continue to flourish. MAIC plans to develop a job training program and our own enterprise to make reentry efforts more sustainable over time. God has allowed us to accomplish a lot and we look forward to where God takes us next along this path of service.

.....and now, **2019**

**2019 Board of Directors**

- |  |   |
|--|---|
| <b>President</b>   | <b>J. McM. (Jim) Backes, Jr., PE</b> , retired, Hargrove Engineers & Constructors |
| <b>Vice President</b>  | <b>Sandy Delchamps, Pastor</b> , City of Refuge for Men                           |
| <b>Secretary</b>   | <b>Kenyen R. Brown, J.D.</b> , Attorney, Maynard Cooper & Gale                    |
| <b>Treasurer</b>   | <b>James E. (Jamey) Sandifer, C.F.P.</b> , Investment Counselor                   |
| <b>Eddie Burrow, Chief Deputy</b> , Mobile Co Sheriff's Office | <b>Rev. Trey Doyle, Pastor</b> , First Baptist Church Mobile                      |
| <b>Paul McLendon, M.Div.</b> , Volunteers of America SE        | <b>Felecia Prince, B.A. &amp; Capt.</b> , Mobile Co Metro Jail                    |
| <b>Patricia Rotella Silverman</b> , Community Volunteer        | <b>Demetrius Semien, M.Div., Ph.D.</b> , Spring Hill College                      |
| <b>Sherman C. Williams, Sr., B.A.</b> , Palmer Williams Group  | <b>Susan B Young, M.S.W.</b> , Community Corrections Cntr                         |

**2019 Administration**

- |   |   |
|---|---|
| <b>Frank D'Alonzo, M.Ed.</b> , Executive Director | <b>Dan A. Williams, M.S.W.</b> , Consultant (volunteer) |
| <b>Mickey Spann, M.Ed.</b> , Accountant           | <b>Rachel Whiteley, B.A.</b> , Grants Manager           |

**Introducing FRANK D'ALONZO**, Executive Director

Frank Joined the staff on January 2019. He has a BA from Villanova University and a M.Ed. from Georgian Court University. He began his career as a teacher in New Jersey and the Texas combined with his duties as a coach. His abilities as a coach eventually led to serving at Iowa State University, Oklahoma State University, the University of Pittsburg and Rutgers University. He and his wife Deena moved to Mobile in 2010 when he joined the staff of Team Focus and beginning in 2012, he began service as the business developer for the GoDaddy Bowl, now entitled the Dollar General Bowl.

---

***For more information:***

**2018 Annual Report, audit and IRS 990 available online or by request:**

**901 Butler Drive Suite A, Mobile, AL 36693-5107**

**P. O. Box 16605, Mobile, AL 36616-0605**

[www.mobileinterfaith.org](http://www.mobileinterfaith.org)

**251.308.8725**

[maic.quest@gmail.com](mailto:maic.quest@gmail.com)

\*\*\*\*\*