

[www.AsburyParkTheaterCompany.org](http://www.AsburyParkTheaterCompany.org)  
[info@AsburyParkTheaterCompany.org](mailto:info@AsburyParkTheaterCompany.org)

# ASBURY PARK THEATER COMPANY

“A unique theater for a unique city.”



# Our Mission

Asbury Park Theater Company is dedicated to creating powerful, invigorating and transformative professional theater that inspires, celebrates and enriches our community. From new works, reimagined classics to provocative high-energy musical performances, Asbury Park Theater Company is home to established, emerging and local professional theater artists.

# Why APTCo Matters

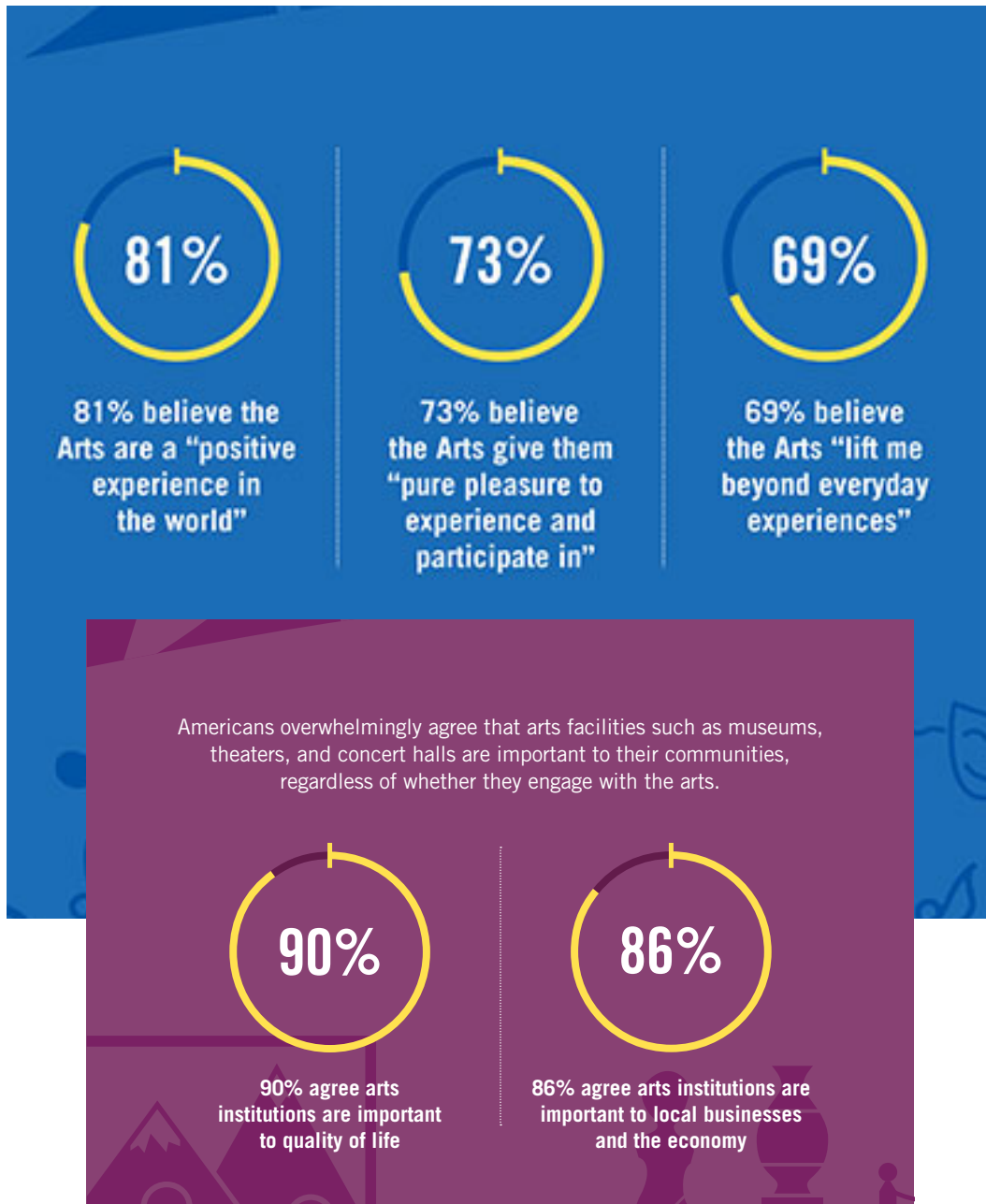
Theater has been a common bond for human beings from the beginning of time. Theater allows us to express ourselves and communicate with others. Theater transcends religion, politics, ethnicity and sexual identity. When performers perform, they hold the power to educate, enlighten and enrich their audience. Through theater, we are finally joined in a common place. Not only in our seats, but we are joined in our hearts, minds and souls. APTCo is dedicated to bringing people and communities together through art.

# We help our community thrive!

Theater Arts Consumers...

- spend more than other travelers
- are more likely to stay in a local hotel or bed & breakfast
- are more likely to spend \$1,000 or more during their weekend stay.
- stay longer than other travelers.

## **Theater gives meaning to our lives.**



<https://www.americansforthearts.org>

**Please consider donating to our cause. Producing professional theater is both challenging and rewarding. Only a small portion of our budget is from ticket sales.**

Our Board of Directors is dedicated to bringing professional theater back to Asbury Park. Your tax-deductible donation and or sponsorship will help our theater company and our community thrive.

Please fill out the attached form and mail it along with your check (no cash please) or money order made payable to “ASBURY PARK THEATER COMPANY” to:

Asbury Park Theater Company  
PO Box 1086  
Asbury Park, NJ 07712

Thank you very much for attending our event and your thoughtful consideration for your support!

Warm Regards,

**2021 Asbury Park Theater Company Board of Directors**

Robert Allison -Board President  
Bob Angelini -Managing Director  
Hon. Thomas Arnone  
Randy Kornberg -Board Treasurer  
Robert McKeon, Esq.  
Jeanne Montano Giannetta -Board Secretary  
Brian O'Brien  
Marylyn Rocky  
Sylvia Sylvia-Cioffi  
William Whitefield -Producing Artistic Director

**Volunteer Staff**

Serena Soffer -Associate Producer

# **SPONSORSHIP OPPORTUNITIES**

## **2022 SEASON SPONSOR LEVELS**

### **SEASON SPONSOR - \$50,000**

- 10 complimentary opening-night tickets to each *APTCO ticketed event* which includes prime seating for the event and pre or post show receptions.
- 10 tickets to APTCo annual gala
- Exclusive signage as “SEASON SPONSOR” on stage prior to all events
- Recognition From Host on Stage during all events
- Recognition in all press releases
- Large logo Recognition on All Advertising
- Large Logo Recognition on APTCo Website and event e-Blasts
- Sponsor logo on all printed event tickets
- Exclusive permission to distribute promotional merchandise and advertising to patrons at all events
- Exclusive access to certain rehearsals of each production
- Links to Season Sponsor website from APTCo website

### **PRODUCTION SPONSOR - \$10,000**

- 10 complimentary opening-night tickets to sponsored production which includes prime seating for the event and pre or post show receptions.
- 8 tickets to another APTCo production during the year.
- 10 tickets to APTCo annual gala
- Exclusive signage as “PRODUCTION SPONSOR” on stage prior to all events
- Recognition From Host on Stage during event
- Recognition in all press releases during production
- Large logo recognition on production advertising
- Large logo recognition on APTCo website and event e-Blasts
- Sponsor logo on all printed event tickets for production
- Exclusive permission to distribute promotional merchandise and advertising to patrons at all events
- Exclusive access to certain rehearsals of each production
- Recognition and link to “Production Sponsor” website from APTCo production webpage

## **CORPORATE SPONSOR - \$5000.00**

- 4 complimentary opening-night tickets to each production of the season which includes prime seating for the event and pre or post show receptions.
- 4 tickets to any show of the sponsored season during the production run for friends, clients, etc.
- 4 tickets to APTCo annual gala
- Exclusive signage as "CORPORATE SPONSOR" on stage prior to all events
- Recognition From Host on Stage during event
- Recognition in all press releases during production
- Large logo recognition on production advertising
- Large logo recognition on APTCo website and event e-Blasts
- Sponsor logo on all printed event tickets for production
- Exclusive permission to distribute promotional merchandise and advertising to patrons at all events
- Exclusive access to certain rehearsals of each production
- Recognition and link to "Production Sponsor" website from APTCo production webpage

## **2021 CABARET EVENT SPONSOR LEVELS**

### **DIAMOND SPONSOR - \$2500.00**

- 4 Complimentary Tickets to *the sponsored event* which includes prime seating for the event
- 4 Complimentary Tickets to *any other APTCo event* which includes prime seating for the event
- 10 Complimentary Tickets to APTCO Summer SODA Showcase
- Exclusive Individual Signage on Stage during all events
- Recognition From Host on Stage during all events
- Recognition in All Press Releases
- Large Logo Recognition on All Advertising
- Large Logo Recognition on APTCo Website and Event e-Blasts
- Exclusive Permission to Distribute Promotional Merchandise and Advertising to patrons at all 3 events
- Exclusive Access to closed Cabaret Rehearsals on each day performance

## **PLATINUM SPONSOR - \$1000.00**

- 2 Complimentary Tickets to *the sponsored event* which includes prime seating for the event
- 2 Complimentary Tickets to *any other APTCo event* which includes prime seating for the event
- 4 Complimentary Tickets to APTCO Summer SODA Showcase
- Recognition From Host on Stage during all events
- Recognition in All Press Releases
- Logo Recognition on All Advertising
- Logo Recognition on APTCo Website and Event e-Blasts

## **GOLD SPONSOR - \$500.00**

- 2 Complimentary Tickets to the sponsored event which includes prime seating for the event
- Recognition From Host on Stage during cabaret of choice
- Recognition in All Press Releases for cabaret of choice
- Logo Recognition on All Advertising for cabaret of choice
- Logo Recognition on APTCo Website and Event e-Blasts

## **SILVER SPONSOR - \$250.00**

- 2 Complimentary Tickets to the sponsored event
- Recognition From Host on Stage during Summer SODA Showcase
- Shared Signage in Lobby during Summer SODA Showcase

## **APPLICATION FOR SPONSORSHIP**

COMPANY NAME:

ADDRESS:

[www.AsburyParkTheaterCompany.org](http://www.AsburyParkTheaterCompany.org)  
[info@AsburyParkTheaterCompany.org](mailto:info@AsburyParkTheaterCompany.org)

CONTACT NAME:

CONTACT EMAIL:

CONTACT PHONE:

EXACT NAME AS IT SHOULD APPEAR ON ADVERTISING:

Please make checks payable to *Asbury Park Theater Company* and mail check and form to Asbury Park Theater Company, PO Box 1086, Asbury Park, NJ 07712, Attention: Sponsorships.

Please email your high definition, camera-ready logo no later than July 10, 2021 to William Whitefield at [william@asburyparktheatercompany.org](mailto:william@asburyparktheatercompany.org). For more information, please call 732.455.2202.

## **Donor Information**



BUSINESS NAME	NAME (LAST, FIRST, M.I.)
STREET ADDRESS	EMAIL
CITY, STATE, ZIP	PHONE
WEBSITE	ALTERNATE PHONE

### Donation Description

CHECK ONE: <input type="checkbox"/> CHECK <input type="checkbox"/> IN-KIND <input type="checkbox"/> CREDIT CARD <input type="checkbox"/> OTHER (NO CASH PLEASE)	
DONATION AMOUNT / (Or DESCRIPTION OF IN-KIND)	DATE
Credit Card Number: Expiration: CVV: Billing Name, Address and Zip (If different from above): Visa, Mastercard, Amex	

**Please make checks payable to: Asbury Park Theater Company**

#### **Asbury Park Theater Co.**

PO Box 1086

Asbury Park, NJ 07712

#### **Bob Angelini**

Managing Director

**Phone:** (732) 455-2202

**Cell:** (908) 670-3699

**[www.AsburyParkTheaterCompany.org](http://www.AsburyParkTheaterCompany.org)** [Bob@AsburyParkTheaterCompany.org](mailto:Bob@AsburyParkTheaterCompany.org)

**Asbury Park Theater Company is a U.S.A. 501c(3), NJ Non-Profit Corporation.  
All donations are tax-deductible to the fullest extent of NJ and Federal Law.**