

OUR PRINCIPAL GOAL IS TO GET OUR CREATIVE VISION
ON SCREEN, THROUGH THE TALENT AND INSIGHT OF OUR
TEAM, ALONG WITH PROSPECTIVE INVESTORS.

Tree of Witchery



A JOHN P. BEGLEY STORY

LOGLINE

VENGEANCE
HAS A
TASTE!



EXECUTIVE SUMMARY

In this Folk Horror we have a new concept of an apple tree that has grown above the graves of the Salem Massachusetts accused witches. For over 300 years their DNA has intertwined and has taken over most of the dynamics of the tree. The heads of the four witches appear to have outgrown the other normal apples. The apples can speak and carry on their personalities from their previous lives.



SYNOPSIS

In the sea town of Salem of 1692 several people were accused of using trickery of the devil and accused of witchcraft. A blood-thirsty crowd sentenced them to death. They were hung and their bodies were carted off and thrown into graves. Forgotten for over 300 years, their vengeance has taken the form of a simple apple tree. Year after year the fruit of the tree has intertwined with the remains of the witches and now has grown into a single-minded life threatening force that is determined to attack the town that handed out a bitter judgement against them.



DIRECTOR'S STATEMENT

The premise of this film is organically entwined with my life. I grew up in a section of Elkins Park, PA on a street that had 2 cemeteries directly across the road from my house and a third smaller cemetery at the end of the street. Our next door neighbors lived in a large Victorian house on four acres of land and had a small apple orchard. These images were woven into my mental tapestry daily.

As a life-long horror fan I owe it to my younger self to immortalize some of those visions that have been locked in my head and hopefully give the viewers some haunted eye candy for their entertainment trick-or-treat bags .



CHARACTERS

This ensemble cast are escorted through the story by 3 main characters. Two main figures who are entwined through time together due to unfortunate events in their past and a third who re-discovers herself through an ancestral document that links her to the past.

SARA

Her unscrupulous choices with men places her at the bottom of society back in 1692. Through the system at the time, she is deemed a witch. Sentenced to death she ultimately uses nature to her advantage as she and others come back through the root system of an apple tree. It is from here that she is determined to take revenge and will stop at nothing or no one to get in her way.

JACK

With his main profession being that of a henchman and gravedigger for the rich in 1692 Jack finds himself in the surprising position of capturing and burying the love of his life. Although during that life his advances were turned away. We now find Jack has reincarnated through a bloodline of gravediggers and his love for Sara has resurfaced through her rebirth. He shares the same unscrupulous qualities as his female counterpart as his calm demeanor slides through Salem like the snake that he is.

EMMA

As a level headed wide eyed newbie to Salem Emma has a hard time trusting as she was left by both parents. Early in life by her mother and more recently her father who disappeared with just a note and some money in her early 20s. She eventually moves to Salem to start anew only to find her true past and destiny has been there all along. Her playful and outgoing presence is her shield to push others to be truthful upfront.

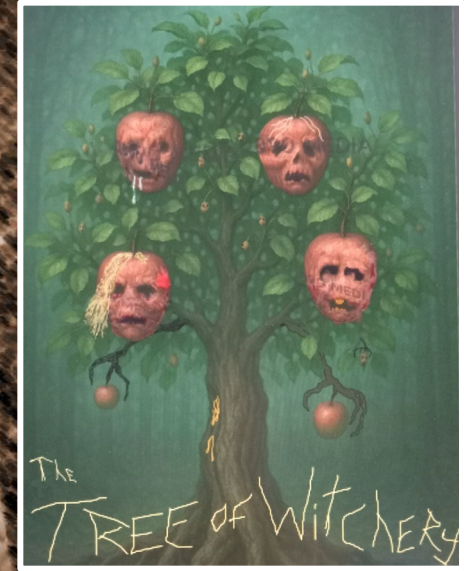


VISUAL STYLE MOODBOARD

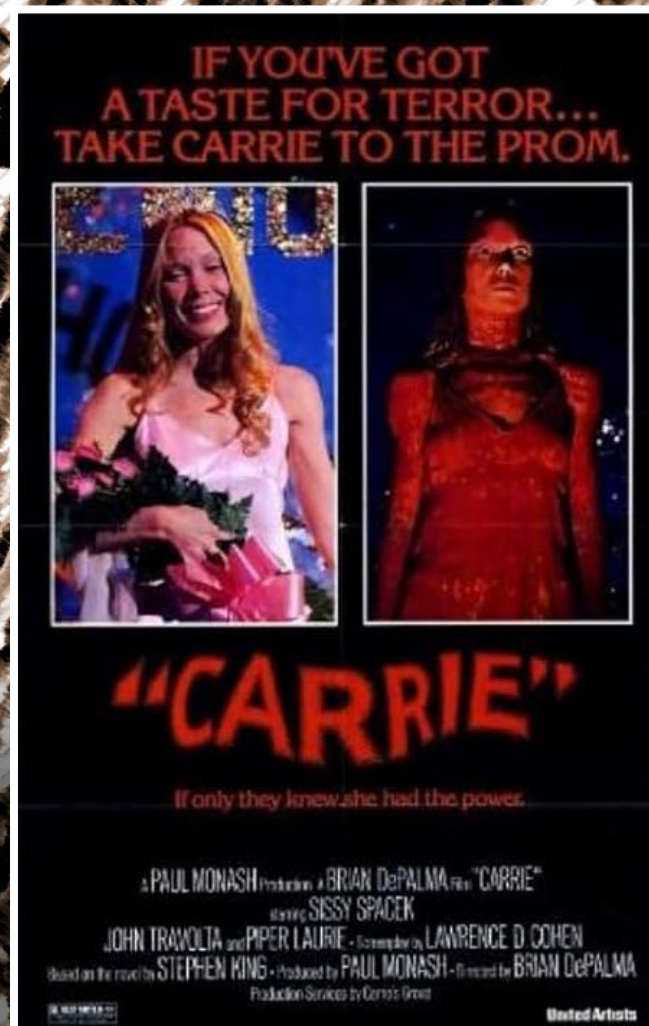
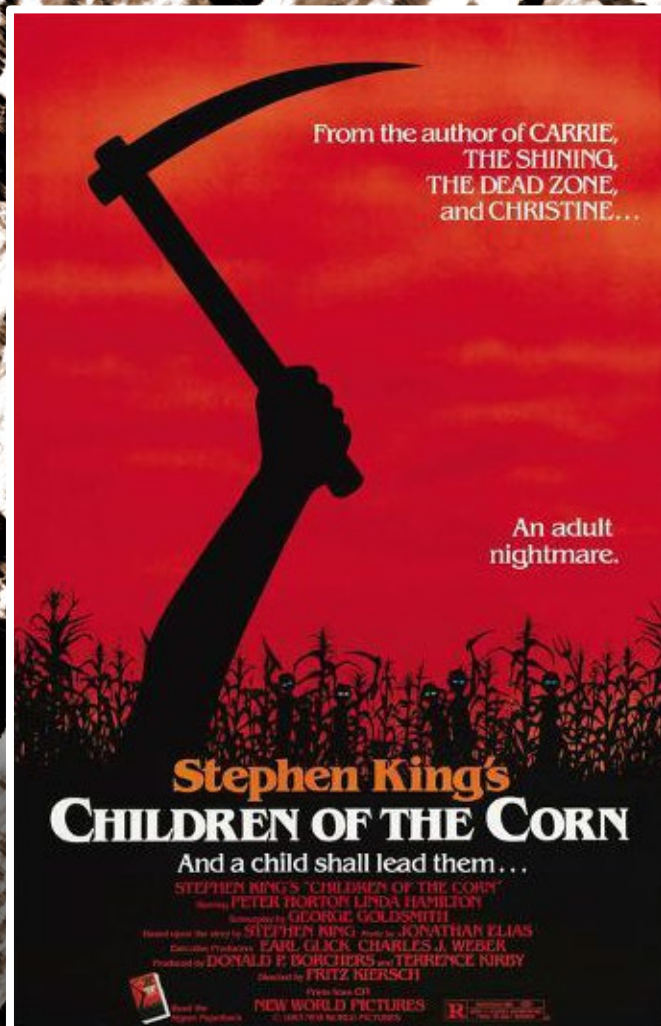
Puritan, farming
industry, rural
small-town feel.

Example:

The Andy Griffith show
yet in color.



COMPARABLES



OUR PRINCIPAL GOAL IS TO GET OUR CREATIVE VISION
ON SCREEN, THROUGH THE TALENT AND INSIGHT OF OUR
TEAM, ALONG WITH PROSPECTIVE INVESTORS.

TREE OF WITCHERY

CLICK THE LINK TO VIEW THE WEBSITE:

<https://treeofwitchery.com/>



A JOHN P. BEGLEY STORY