

Doodle Cooma Celebrating 76 years as Poll Hereford Breeders

**SCHIPPS RED ANGUS
&
DOODLE COOMA POLL HEREFORDS**

**SCHIPPS BEEF
PRODUCTION SALE**

FRIDAY 4TH APRIL, 2025 1PM

**ONLINE SALE VIA
AUCTIONSPLUS**



**SIMULTANEOUS
AUCTION**



Lot 1
Lot 10

Elders

**CARCASE
TEMPERAMENT
STRUCTURE**

WAGGA WAGGA
0427 227 590
daryl.schipp@bigpond.com



**FOR SALE
UPDATES &
DETAILS**

www.doodlecoomapastco.com.au
@schipps beef enterprises



SCHIPPS BEEF PRODUCTION SALE
FRIDAY 4TH APRIL, 2025

STARTING 1.00PM

ONLINE VIA AUCTIONS PLUS
Simultaneous Auction

**Vendor: The Schipp Family of
Doodle Cooma Pastoral Company Pty Ltd.**

'Glandore' 2941 Sturt Hwy, Alfredtown, NSW

ON - PROPERTY INSPECTION DAY
SATURDAY 29th MARCH, 10AM - 2PM

ENTER VIA TUMBARUMBA ROAD DRIVEWAY

Daryl Schipp
0427 227 590

Adam Schipp
0458 394 288

Zoe Schipp 0447 412 677



RYAN BAJADA
0435 411 536
ryan.bajada@elders.com.au

JACOB KERRISK
0457 516 070
jacob.kerrisk@elders.com.au



Welcome to the Schipps Beef Production Sale

Thank you for taking the time to inspect our 2025 line up of Red Angus and Poll Hereford Bulls. When the seasons get tough, you need moderate, easy doing cattle more than ever. The past 12 months has seen our cattle not only maintain themselves on limited feed, but also produce calves consistently and gain weight well - This year we offer one of our most even line ups of bulls yet. This, combined with calving ease, modern genetics, doing ability and a quiet temperament are the keys to profit.

As a family run business, we put every effort and resource into improving our property and cattle. We have a long term commitment to the industry and this is evident in our approach to breeding - we are not after any short term fixes or fads but are focused on improving the traits that will have a benefit to the profitability of our clients.

Showcasing a quality run of Doodle Cooma Poll Hereford bulls and vendor bred Schipps Red Angus grass-fed bulls.

All bulls demonstrate excellent temperament, sound feet and structure. Figures show good growth, muscle and calving ease.

ANIMAL HEALTH

All bulls have received the following assessments/treatments:

- ✓ All bulls have been ear notched or blood tested FREE of Bovine Viral Diarrhea (BVD)
- ✓ Fully vaccinated with 7 in 1 and drenched to control any internal/external parasites
- ✓ Semen Tested
- ✓ DNA Tested - sire verified
- ✓ Doodle Cooma Pastoral Co. is recorded at JBAS 6. All cattle are free to travel to all areas of NSW, VIC, TAS, SA & QLD.
- ✓ VIBRIOVAX vaccinated (first dose)
- ✓ Covered by Schipps "Fair Go" Guarantee

Doodle Cooma (Aboriginal for "Sweet Waters") Poll Herefords was founded at Henty NSW in 1949 by Alf Piston. Based on the best of Cudgeena females the stud was successful from the start with many other studs founded with Doodle Cooma Females.

In 1971 the stud was purchased by the Schipp family and moved to Wagga Wagga. Daryl took over the management of the stud in 1975, while still at high school, when Hon. Joe Schipp OAM, entered state politics.

NBRS Performance recording was commenced in 1976 along with the purchase of many renowned top sires and A.I programs using the best bulls available- Australian and International.



Doodle Cooma Quartz - A bull before his time. Large yet easy-fleshing.

The stud held a number of successful bull sales through the 90's with many studs and top commercial herds purchasing sires and females.

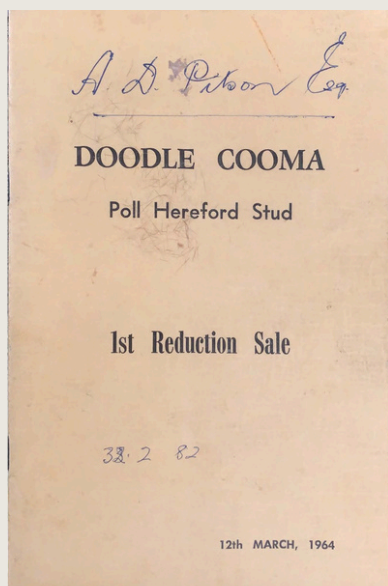
The millennium drought caught up with Doodle Cooma and the stud cow numbers dropped from around 100 to 80 but a solid core of commercial buyers kept bull sales ticking over. Doodle Cooma commenced a program of selling their top bulls at Wodonga and the Dubbo National Show & Sales with good success. Cattle have been sold to all Eastern states including Tasmania, where a bull purchased at Wodonga won Senior Champion at Hobart Royal Show.

In recent years, Doodle Cooma has re-intensified its A.I program and with strict culling has quickly upgraded the cattle and improved all EBV figures. A balanced approach to breeding has provided us with cattle that can win at shows but have performance to be profitable in a value based commercial beef industry.

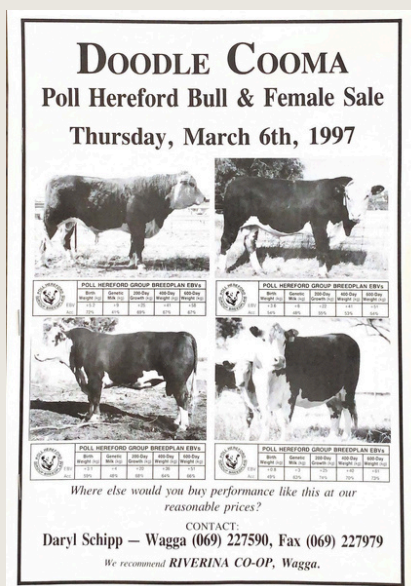
The Schipp Family have enjoyed shaping the Doodle Cooma Poll Hereford stud to what it is today, and hope for many more successful years.

In 2024 we celebrated

Doodle Cooma Poll Herefords



Doodle Cooma Sale Catalogue 1964



Sorting through a client's steers

SCHIPPS RED ANGUS

A UNIQUE OPPORTUNITY



Schipp's Red Angus was established at Wagga Wagga in 1993.

"Red Angus cattle excel for temperament, maternal qualities and carcase characteristics. Red Angus and their crosses are keenly sought after by commercial producers as a cornerstone for their production system.

Red Angus have the ability to adapt to the vast range of the climatic conditions encountered across Australia"- RASA

This is an even line of Red Angus bulls suitable for large commercial production systems through to stud heifer joining.

This unique opportunity to view and purchase our run of ready-to-work red bulls, with good breeding values, feet and structure, is an opportunity not to be missed.

We will be offering a terrific line up of vendor bred, grass fed and excellent tempered Red Angus Bulls in the 2025 Schipp's Beef Production Sale.

A FAIR GO

Our Bulls have been run with their mates all their lives. We suggest that you have some cattle in the yards when you get your bull home, allowing them to socialise together and so your new bull is not stressed. We also recommend at least 6 months insurance on your bull.

You have the Schipp family "Fair Go" Guarantee. If you have problems and you do not believe you have had a "Fair Go" from the bull within 6 months after purchase, talk to us and we will help.

Free delivery of your bull within 100ks of Wagga - or, for 3 or more bulls purchased we offer free delivery to Dubbo.

VIDEOS

SCAN ME



WATCH LOT VIDEOS OF OUR 2025
POLL HEREFORD AND RED ANGUS
BULLS ON OFFER!

**SCAN THE QR CODE WITH
YOUR SMART PHONE CAMERA
TO WATCH**

Thank you to **Zoe Schipp** for our Photos and Videos

BREEDPLAN - Understanding EBV's

ESTIMATED BREEDING VALUES (EBVs) The EBV is the best estimate of an animal's genetic merit for that trait.

ACCURACY: Accuracy is based on the amount of performance information available on the animal and its close relatives - particularly the number of progeny analysed. The higher the accuracy value the lower the likelihood of change in the animal's EBV as more information is analysed for that animal or its relatives. Even though an EBV with a low accuracy may change in the future, it is still the best estimate of an animal's genetic merit for that trait.

Gestation Length EBV (days) is an estimate of the time from conception to the birth of the calf and is based on ASI and hand mating records. Lower (negative) GL EBVs indicate shorter gestation length and therefore easier calving and increased growth after birth.

Birth Weight EBV (kg) is based on the measured birth weight of progeny, adjusted for dam age. The lower the value the lighter the calf at birth and the lower the likelihood of a difficult birth. This is particularly important when selecting sires for use over heifers.

200-Day Growth EBV (kg) is calculated from the weight of progeny taken between 80 and 300 days of age. Values are adjusted to 200 days and for age of dam. This EBV is the best single estimate of an animal's genetic merit for growth to early ages.

400-Day Weight EBV (kg) is calculated from the weight of progeny taken between 301 and 500 days of age, adjusted to 400 days and for age of dam. This EBV is the best single estimate of an animal's genetic merit for yearling weight.

600-Day Weight EBV (kg) is calculated from the weight of progeny taken between 501 and 900 days of age, adjusted to 600 days and for age of dam. This EBV is the best single estimate of an animal's genetic merit for growth beyond yearling age.

Mature Cow Weight EBV (kg) is based on the cow weight when the calf is weighed for weaning, adjusted to 5 years of age. This EBV is an estimate of the genetic difference in cow weight at 5 years of age and is an indicator of growth at later ages and potential feed maintenance requirements of the females in the breeding herd. Steer breeders wishing to grow animals out to a larger weight may also use the Mature Cow Weight EBV.

Milk EBV (kg) is an estimate of an animal's milking ability. For sires, this EBV indicates the effect of the daughter's milking ability, inherited from the sire, on the 200-day weights of her calves. For dams, it indicates her milking ability.

Scrotal Size EBV (cm) This EBV is an estimate of an animal's genetic merit for scrotal size. There is also a small negative correlation with age of puberty in female progeny and therefore selection for increased scrotal size will result in reduced age at calving of female progeny.

Carcase Weight EBV (kg) is based on abattoir carcass records and is an indicator of the genetic differences in carcass weight at the standard age of 650 days.

Eye Muscle Area EBV (sq cm) This EBV estimates genetic differences in eye muscle area at the 12/13th rib site of a 300 kg dressed carcass. More positive EBVs indicate better muscling on animals. Sires with relatively higher EMA EBVs are expected to produce better muscled and higher percentage yielding progeny at the same carcass weight than will sires with lower EMA EBVs.

Rib Fat and Rump Fat EBVs (mm) are calculated from measurements of subcutaneous fat depth at the 12/13th rib site and the P8 rump site and are adjusted to a standard 300 kg carcass. These EBVs are indicators of the genetic differences in fat distribution on a standard 300 kg carcass. Sires with low, or negative, fat EBVs are expected to produce leaner progeny at any particular carcass weight than will sires with higher EBVs.

Retail Beef Yield EBV (%) indicates genetic differences between animals for retail yield percentage in a standard 300 kg carcass. Sires with larger EBVs are expected to produce progeny with higher yielding carcasses.

Intramuscular Fat EBV (%) is an estimate of the genetic difference in the percentage of intramuscular fat at the 12/13th rib site in a 300 kg carcass. Depending on market targets, larger more positive values are generally more favourable.

For further information please contact the Red Angus Society or Herefords Australia.

SALE INFORMATION

ATTENTION BUYER

INSPECTION DAY

Cattle will be on display at the property of Doodle Cooma Pastoral Company - 'Glandore' 2941 Sturt Highway, Alfredtown NSW 2650 on the designated Inspection day:

Saturday 29th March 2025, 10am - 2pm.

Alternate inspections can be arranged prior to the sale by appointment with agents or contacting Daryl Schipp - 0427 227 590

AGENTS AND BUYER'S SALE REBATES

A rebate of 2.5% will be paid to all agents who introduce their clients or attend the sale with or on behalf of their client and settle within the trading terms of the settling agent. To qualify for this rebate agents must introduce the client in writing to the vendor prior to the sale. A rebate of 1% will be paid to all agents who settle within the trading terms of settling agent but do not introduce their client or attend the sale.

BULL GUARANTEE: Doodle Cooma Pastoral Company Pty Ltd guarantee structural soundness and fertility of all bulls. All bulls have been independently examined for fertility and are structurally sound to the best of our knowledge. If an animal becomes infertile or breaks down due to a reason other than injury or misadventure at anytime in the first 6 months from purchase we will:

1. Provide you with a satisfactory replacement if available or
 2. Issue you with a credit equal to the purchase price less the salvage value that may be used to purchase an animal from Doodle Cooma in the future.
- Any claims are to be accompanied by a certificate from a registered vet.
All vet costs are the responsibility of the purchaser.

BULL REGISTRATION & TRANSFERS

All bulls in the sale are HBR registered through their respective societies, Herefords Australia and Red Angus Australia unless stated otherwise.

The Settling Agent of the sale will conduct individual NLIS transfers to purchasers nominated PIC on registration form. Doodle Cooma Pastoral Co. will transfer eligible bulls into purchasers name through Herefords Australia and Red Angus Australia societies. If possible please advise us of your Herefords Australia and/or Red Angus Australia herd prefix/ Herd ID.

BIDDING / BUYER NUMBER SYSTEM

The bull sale is **online only** on bidding platform, Auctions Plus. Usual protocol to register for bidding is required through this channel.

CARTAGE / FREIGHT

Doodle Cooma Pastoral Co. Pty Ltd will offer free delivery of your bull within 100kms of Wagga.
Or, for 3 or more bulls purchased we will offer free delivery to Dubbo.
Please confirm on sale day, if you have any transport needs.

SALE INFORMATION

ATTENTION BUYER

INSURANCE

Doodle Cooma Pastoral Co. recommends you take out insurance to cover your new purchase. At the completion of the timer on the online sale, the bull you have purchased becomes your responsibility. If they are injured in the yards or on the truck during delivery, it is no longer the responsibility of the vendor.

ANIMAL HEALTH

All bulls have received the following assessments/treatments:

- Ear notched or blood tested Bovine Viral Diarrhea (BVD) negative
- Fully vaccinated with 7 in 1 and drenched to control any internal/external parasites
- Semen Tested
- DNA Tested - sire verified
- Doodle Cooma Pastoral Co. is recorded at JBAS 6. All cattle are free to travel to all areas of NSW, VIC, TAS, SA & QLD.
- 1st dose VIBRIOVAX - a second can be administered on request.
- Covered by Schipps "Fair Go" Guarantee

RECESSIVE GENETIC CONDITION

All lots offered are free of known genetic conditions, either by pedigree or testing.

GST

GST will be added to all of the sale lots.

DISCLAIMER

▪ Doodle Cooma Pastoral Co., selling agents, officers, and employees while exercising due care, provide all information without responsibility and do not warrant its accuracy. They also accept no responsibility for accidents that occur on or about the venue during inspections. You attend the venue for bull inspections at your own risk.

▪ People entering upon our property for any purpose whatsoever, including attendance of cattle inspections, do so at their own risk. We are not liable to you for personal injury or death suffered by you and/or for the theft, loss of or damage to any personal property caused or contributed to by us or by any person whether caused or contributed to by our or their negligence, deliberate act or unlawful conduct. "We", "Us" or "Our" refer to the owners, their employees, contractors and agents and each of them. Every care has been taken in compiling this catalogue to ensure accuracy of information supplied, but no responsibility is accepted for any errors which may have occurred.

Animal details included in this catalogue, including but not limited to pedigree, DNA information, Estimated Breeding Values (EBVs) and Index values, are based on information provided by the breeder or owner of the animal. Whilst all reasonable care has been taken to ensure that the information provided in this catalogue was correct at the time of publication, we take no responsibility for the accuracy or completeness of the information, nor for the outcome (including consequential loss) of any action taken based on this information.



AuctionsPlus

How to Register and Bid on AuctionsPlus

1

Go to www.auctionsplus.com.au to register at least 48 hours before the sale.

2

Select **"Sign Up"** in the top right hand corner.

3

Fill out your name, mobile number, email address and create a password.

4

Go to your emails and confirm the account.

5

Return to AuctionsPlus and log in.

6

Select **"Dashboard"** and then select **"Request Approval to Buy"**.

7

Fill in buyer details and once completed go back to Dashboard.

8

Complete buyer induction module (approx. 30 minutes).

9

AuctionsPlus will email you to let you know that your account has been approved.

10

Log in on sale day and connect to auction.

11

Bid using the two-step process – unlock the bid button and bid at that price.

12

If you are successful, the selling agent will contact you post sale to organise delivery and payment.

For more information please contact us on:

Phone: (02) 9262 4222

Email: info@auctionsplus.com.au

Lot 1 DOODLE COOMA UMPIRE 01 (PP)

Ident: DCPU001

Born: 07/03/2023

KOANUI UNANIMOUS 0408 (P)
 KOANUI TECHNO 3062 (IMP NZL) (PP)
 KOANUI BLUSH 6455 (P)
 Sire: WEETALIBA PIVOT P3 (AI) (PP)
 KOANUI BLUSH 6455 (P)
 WEETALIBA MARINDA L14 (AI) (P)
 WEETALIBA MARINDA G12 (P)
 OTAPAWA SPARK 3060 (IMP NZL) (AI) (ET) (P)
 MAWARRA MANITOBA J051 (AI) (ET) (PP)
 MAWARRA MISS TITANIA 023 (AI) (P)
 Dam: KANIMBLA MARITANA M162 (P)
 KANIMBLA EXPANSION E011 (AI) (P)
 KANIMBLA MARITANA G078 (P)
 KANIMBLA MARITANA B06 (AI) (P)

\$ Index Values

Sustainability Production Index: +\$149
 MSA Production Index: +\$147



February 2025 Hereford BREEDPLAN																
CE (DIR)	CE (DTRS)	GL	BW	200	400	600	MCW	Milk	SS	DC	Cwt	EMA	Rib	RUMP	RBV%	IMF%
+7.6	+5.9	-1.9	+4.1	+42	+65	+90	+102	+10	+3.2	-3.7	+68	+3.2	+1.1	+1.7	+0.1	+1.2
58%	47%	71%	77%	75%	74%	75%	67%	62%	76%	40%	61%	55%	58%	61%	48%	60%
40	45	30	55	15	30	35	5	95	15	50	20	80	40	35	85	30

Traits Observed: 200WT,600WT,SS,FAT,EMA,IMF,Genomics

Parent Verification: Sire: Verified, Dam: Not Verified

Notes: Excellent Hereford cosmetics but more importantly combines high performance, calving ease with high IMF and fats. Stylish, strong and long. A terrific bull that truly is the whole package.

Lot 2 DOODLE COOMA UARDRY U010 (AI) (PP)

Ident: DCPU010

Born: 06/05/2023

LIMEHILLS STAMPER 110429 (P)
 LIMEHILLS STAMPER 140064 (P)
 LIMEHILLS LEONORA 749 (P)
 Sire: LIMEHILLS STARTER 160062 (IMP NZL) (PP)
 OKAWA ELECTRA 1117 (P)
 LIMEHILLS BEAUTY 140225 (P)
 LIMEHILLS BEAUTY 110483 (P)
 NJW 73S M326 TRUST 100W ET (IMP USA) (ET) (P)
 VALMA LANDSLIDE (AI) (S)
 VALMA NATIONALS MOONSHINE A1 (AI) (P)
 Dam: KANIMBLA CENTREFOLD Q008 (AI) (P)
 KANIMBLA PENNANT G40 (P)
 KANIMBLA CENTREFOLD J051 (TW) (P)
 KANIMBLA CENTREFOLD G58 (AI) (ET) (P)

\$ Index Values

Sustainability Production Index: +\$146
 MSA Production Index: +\$129



February 2025 Hereford BREEDPLAN																
CE (DIR)	CE (DTRS)	GL	BW	200	400	600	MCW	Milk	SS	DC	Cwt	EMA	Rib	RUMP	RBV%	IMF%
-4.3	+12.0	-3.3	+4.5	+40	+71	+101	+108	+17	+2.1	-3.8	+74	+5.0	+0.7	+1.0	+1.1	+0.7
64%	54%	77%	79%	78%	77%	78%	71%	68%	79%	47%	63%	57%	60%	64%	55%	63%
85	10	15	65	25	15	15	3	60	60	50	7	35	60	60	35	55

Traits Observed: GL,200WT,600WT,SS,FAT,EMA,IMF,Genomics

Parent Verification: Sire: Verified, Dam: Not Tested

Notes: This Starter son is full of meat! moderate birthweight with high growth and eye muscle. Good bone and soft skin. An absolute powerhouse.

Lot 3 DOODLE COOMA UNGARIE U016 (AI) (PP)

Ident: DCPU016

Born: 09/05/2023

SCHU-LAR ON TARGET 22S (IMP USA) (ET) (P)
 KCF BENNETT STRATEGY Z303 ET (P)
 KCF MISS REVOLUTION X338 (ET) (P)
 Sire: TH MASTERPLAN 183F (IMP USA) (PP)
 FTF PROSPECTOR 145Y (IMP USA) (P)
 TH 512X 145Y DOMINETTE 57B (P)
 TH 122 71I DOMINETTE 512X ET (P)
 BOWEN EMPIRE E122 (AI) (ET) (P)
 BOWEN HAWLEY H54 (AI) (P)
 BOWEN RUTH E321 (AI) (P)
 Dam: DOODLE COOMA MOONQUEEN 55 (P)
 BRAYBOOK DYNAMO D309 (P)
 DOODLE COOMA MOONQUEEN 53 J51 (P)
 DOODLE COOMA MOONQUEEN 37 (P)

\$ Index Values

Sustainability Production Index: +\$137
 MSA Production Index: +\$127



February 2025 Hereford BREEDPLAN																
CE (DIR)	CE (DTRS)	GL	BW	200	400	600	MCW	Milk	SS	DC	Cwt	EMA	Rib	RUMP	RBV%	IMF%
-4.8	+6.4	-0.2	+4.7	+42	+67	+81	+60	+15	+2.6	-2.6	+52	+2.9	+1.2	+1.3	-0.3	+1.2
62%	48%	75%	78%	77%	76%	77%	68%	65%	78%	37%	64%	59%	61%	63%	52%	64%
85	45	65	65	15	25	55	65	75	35	75	65	85	35	50	93	30

Traits Observed: GL,200WT,600WT,SS,FAT,IMF,Genomics

Parent Verification: Sire: Verified, Dam: Not Tested

Notes: This bull packs a punch with muscle expression, good growth figures and IMF. Typical of Masterplan is very easy doing, with high fat EBVs. Nice eye set. Plenty of grunt in this bull.

Lot 4 DOODLE COOMA ULSTER U017 (AI) (PP)

Ident: DCPU017

Born: 09/05/2023

SCHU-LAR ON TARGET 22S (IMP USA) (ET) (P)
KCF BENNETT STRATEGY Z303 ET (P)
KCF MISS REVOLUTION X338 (ET) (P)
Sire: TH MASTERPLAN 183F (IMP USA) (PP)
KCF MISS REVOLUTION X338 (ET) (P)
TH 512X 145Y DOMINETTE 57B (P)
TH 122 71I DOMINETTE 512X ET (P)

ALLENDALE VAGABOND A74 (AI) (P)
YARAWA SOUTH MINSTREL M115 (AI) (PP)
YARAWA SOUTH FAVOURITE J119 (P)
Dam: DOODLE COOMA MARVEL 395 (P)
BRAYBOOK DYNAMO D309 (P)
DOODLE COOMA MARVEL 341 (P)
DOODLE COOMA MARVEL 313 (P)

\$ Index Values

Sustainability Production Index: +\$175
MSA Production Index: +\$172



February 2025 Hereford BREEDPLAN																
CE (DIR)	CE (DTRS)	GL	BW	200	400	600	MCW	Milk	SS	DC	Cwt	EMA	Rib	RUMP	RBV%	IMF%
+6.6	+7.1	+0.5	+2.7	+34	+65	+81	+62	+20	+3.0	-3.3	+55	+5.5	+1.3	+0.8	+0.9	+2.4
63%	49%	76%	79%	78%	77%	78%	69%	65%	79%	37%	65%	61%	62%	63%	52%	65%
45	40	80	35	55	30	55	60	35	25	60	55	25	30	65	45	2

Traits Observed: GL,200WT,600WT,SS,FAT,EMA,IMF,Genomics

Parent Verification: Sire: Verified, Dam: Verified

Notes: Masterplan sons are in demand for their muscle, high marbling & calving ease - boasting plenty of maternal strength. This high indexing bull is a cross-breeders dream!

Lot 5 DOODLE COOMA UNDERRA (PP)

Ident: DCPU037

Born: 24/06/2023

KOANUI UNANIMOUS 0408 (P)
KOANUI TECHNO 3062 (IMP NZL) (PP)
KOANUI BLUSH 6455 (P)
Sire: WEETALIBA PIVOT P3 (AI) (PP)
DAYS CALIBRE G74 (PP)
WEETALIBA MARINDA L14 (AI) (P)
WEETALIBA MARINDA G12 (P)
WIRRUNA FLETCHER F214 (P)
WIRRUNA LANCE L74 (AI) (PP)
WIRRUNA GOLDEN VANITY H60 (AI) (P)
Dam: DOODLE COOMA NORA 23 (AI) (P)
DOODLE COOMA G-MAIL (P)
DOODLE COOMA NORA 8 (P)
DOODLE COOMA NORA 5 (P)

\$ Index Values

Sustainability Production Index: +\$145
MSA Production Index: +\$129



February 2025 Hereford BREEDPLAN																
CE (DIR)	CE (DTRS)	GL	BW	200	400	600	MCW	Milk	SS	DC	Cwt	EMA	Rib	RUMP	RBV%	IMF%
-9.3	+7.0	+2.2	+6.4	+48	+77	+100	+88	+8	+5.3	-4.1	+64	+0.9	+0.6	+0.5	-0.8	+1.2
57%	46%	71%	76%	75%	74%	75%	65%	61%	76%	40%	59%	54%	56%	60%	48%	59%
92	40	95	90	3	6	15	15	98	1	45	25	100	65	75	98	30

Traits Observed: 200WT,600WT,SS,FAT,EMA,IMF,Genomics

Parent Verification: Sire: Verified, Dam: Verified

Notes: Lovely hair and skin on this bull with high level growth. Top 1% scrotal for fertility. Pivot has done a good job across all of his sale bulls with a consistent track record and is closely watched by many.

Lot 6 DOODLE COOMA UNCOIL U44 (PP)

Ident: DCPU044

Born: 08/08/2023

WIRRUNA LEAP FORWARD L95 (ET) (PP)
WILLACK PEARCE P544 (AI) (PP)
CHESTER QUEEN G37 (P)
Sire: WILLACK REVOLUTION R620 (PP)
WILLACK MONOGRAM (AI) (PP)
WILLACK MICHAELA P540 (PP)
WILLACK MIRA M465 (PP)
SEVENBARDOT GOLIATH K80 (AI) (PP)
JACLINTON MAGNUM M80 (PP)
JACLINTON LEONIE (AI) (P)
Dam: DOODLE COOMA NORA 24 (P)
BOWEN HELGA H120 (P)
DOODLE COOMA NORA 14 (P)
DOODLE COOMA NORA 5 (P)

\$ Index Values

Sustainability Production Index: +\$123
MSA Production Index: +\$121



February 2025 Hereford BREEDPLAN																
CE (DIR)	CE (DTRS)	GL	BW	200	400	600	MCW	Milk	SS	DC	Cwt	EMA	Rib	RUMP	RBV%	IMF%
+15.1	+5.8	-6.9	+2.3	+29	+46	+57	+49	+22	+2.4	-3.7	+37	+3.3	+1.0	+1.6	+0.4	+0.8
53%	39%	66%	74%	72%	72%	72%	61%	56%	74%	31%	54%	47%	50%	55%	42%	53%
15	45	1	30	80	90	93	80	20	45	50	95	75	45	40	70	50

Traits Observed: CE,200WT,400WT,SS,FAT,EMA,IMF,Genomics

Parent Verification: Sire: Verified, Dam: Not Tested

Notes: A Top heifer bull by new sire Willack Revolution. Beautiful hair and skin with high milk EBVs. Good temperament and feet. A soft, free-moving sire not to be overlooked.

Lot 7 DOODLE COOMA UNDOOLA U49 (PP)

Ident: DCPU049

Born: 10/08/2023

KOANUI UNANIMOUS 0408 (P)
 KOANUI TECHNO 3062 (IMP NZL) (PP)
 KOANUI BLUSH 6455 (P)
 Sire: WEETALIBA PIVOT P3 (AI) (PP)
 KOANUI BLUSH 6455 (P)
 WEETALIBA MARINDA L14 (AI) (P)
 WEETALIBA MARINDA G12 (P)
 SEVENBARDOT GOLIATH K80 (AI) (PP)
 JACLINTON MAGNUM M80 (PP)
 JACLINTON LEONIE (AI) (P)
 Dam: DOODLE COOMA MOLLY 128 (P)
 BRAYBOOK DYNAMO D309 (P)
 DOODLE COOMA MOLLY 113 (P)
 DOODLE COOMA MOLLY 108 (P)

\$ Index Values

Sustainability Production Index: +\$140
 MSA Production Index: +\$130



February 2025 Hereford BREEDPLAN																
CE (DIR)	CE (DTRS)	GL	BW	200	400	600	MCW	Milk	SS	DC	Cwt	EMA	Rib	RUMP	RBV%	IMF%
-1.9	-4.7	-1.0	+5.6	+38	+68	+97	+104	+4	+3.0	-2.6	+65	+3.1	+0.5	+0.8	+0.2	+1.6
56%	45%	68%	75%	74%	73%	74%	63%	59%	75%	37%	58%	52%	55%	59%	47%	58%
75	95	50	80	35	20	20	4	100	25	75	25	80	70	65	80	15

Traits Observed: CE,200WT,400WT,SS,FAT,EMA,IMF,Genomics

Parent Verification: Sire: Verified, Dam: Not Verified

Notes: Another quality Pivot son with high IMF and good growth. As with all Pivots you get sound structure, good feet and a tight sheath. U049 is out of a class; Doodle Cooma Dam backed by 76 years of breeding.

Lot 8 DOODLE COOMA UNIFORM U52 (PP)

Ident: DCPU052

Born: 14/08/2023

NJW 79Z Z311 ENDURE 173D (IMP USA) (ET) (PP)
 KANIMBLA QUANTUM Q021 (AI) (PP)
 KANIMBLA CENTREFOLD M022 (AI) (PP)
 Sire: KANIMBLA QUANTUM S015 (AI) (PP)
 DAYS FLEETWOOD K185 (PP)
 KANIMBLA JENNY N027 (P)
 KANIMBLA JENNY H002 (AI) (P)
 SOUTH BUKALONG WALLACE 2 (P)
 GLENTREVOR WALLACE H427 (AI) (PP)
 GLENTREVOR MARITANA F240 (P)
 Dam: DOODLE COOMA INNOVATION 302 (P)
 DOODLE COOMA JAMES BOND J19 (PP)
 DOODLE COOMA INNOVATION 291 (P)
 DOODLE COOMA INNOVATION 259 (P)

\$ Index Values

Sustainability Production Index: +\$165
 MSA Production Index: +\$157



February 2025 Hereford BREEDPLAN																
CE (DIR)	CE (DTRS)	GL	BW	200	400	600	MCW	Milk	SS	DC	Cwt	EMA	Rib	RUMP	RBV%	IMF%
+9.5	+4.2	-0.1	+2.4	+32	+52	+72	+39	+24	+2.8	-5.1	+47	+2.9	+1.6	+2.8	+0.1	+0.8
52%	40%	68%	74%	72%	71%	72%	61%	57%	72%	33%	56%	49%	52%	56%	43%	55%
35	60	70	30	70	75	75	90	15	30	25	80	85	20	10	85	50

Traits Observed: CE,200WT,400WT,SS,FAT,EMA,IMF,Genomics

Parent Verification: Sire: Verified, Dam: Not Tested

Notes: U052 is suitable for heifers from a performance orientated Kanimbla bull and another classic Doodle Cooma Dam - and he is thick! Good fat EBVs for easy doing along with high milk to make valuable females.

Lot 9 DOODLE COOMA UNIQUE U065 (PP)

Ident: DCPU065

Born: 22/08/2023

WIRRUNA LEAP FORWARD L95 (ET) (PP)
 WILLACK PEARCE P544 (AI) (PP)
 CHESTER QUEEN G37 (P)
 Sire: WILLACK REVOLUTION R620 (PP)
 WILLACK MONOGRAM (AI) (PP)
 WILLACK MICHAELA P540 (PP)
 WILLACK MIRA M465 (PP)
 SEVENBARDOT GOLIATH K80 (AI) (PP)
 JACLINTON MAGNUM M80 (PP)
 JACLINTON LEONIE (AI) (P)
 Dam: DOODLE COOMA MOONQUEEN 59 (P)
 BOWEN HAWLEY H54 (AI) (P)
 DOODLE COOMA MOONQUEEN 55 (P)
 DOODLE COOMA MOONQUEEN 53 J51 (P)

\$ Index Values

Sustainability Production Index: +\$128
 MSA Production Index: +\$128



February 2025 Hereford BREEDPLAN																
CE (DIR)	CE (DTRS)	GL	BW	200	400	600	MCW	Milk	SS	DC	Cwt	EMA	Rib	RUMP	RBV%	IMF%
+10.4	+13.6	-3.4	+2.8	+31	+46	+54	+47	+17	+0.9	-3.7	+44	+2.8	+1.1	+1.8	-0.1	+1.0
52%	39%	66%	74%	72%	71%	72%	60%	56%	74%	31%	54%	47%	50%	56%	42%	53%
30	5	15	35	75	90	95	85	60	96	50	85	90	40	35	90	40

Traits Observed: CE,200WT,400WT,SS,FAT,EMA,IMF,Genomics

Parent Verification: Sire: Verified, Dam: Not Tested

Notes: A thick calving ease bull with great structure and lovely nature. Above average for fats and IMF - another Revolution son who is excelling. Most suitable for your heifers.

Lot 10 DOODLE COOMA UPSIDE U072 (PP)

(unregistered)

Ident: DCPU072

Born: 24/08/2023

KOANUI UNANIMOUS 0408 (P)
 KOANUI TECHNO 3062 (IMP NZL) (PP)
 KOANUI BLUSH 6455 (P)
 Sire: WEETALIBA PIVOT P3 (AI) (PP)
 KOANUI BLUSH 6455 (P)
 WEETALIBA MARINDA L14 (AI) (P)
 WEETALIBA MARINDA G12 (P)
 SEVENBARDOT GOLIATH K80 (AI) (PP)
 JACLINTON MAGNUM M80 (PP)
 JACLINTON LEONIE (AI) (P)
 Dam: DOODLE COOMA MOONQUEEN 58 (PP)
 BOWEN HAWLEY H54 (AI) (P)
 DOODLE COOMA MOONQUEEN 55 (P)
 DOODLE COOMA MOONQUEEN 53 J51 (P)

\$ Index Values

Sustainability Production Index: +\$155
 MSA Production Index: +\$161



February 2025 Hereford BREEDPLAN

CE (DIR)	CE (DTRS)	GL	BW	200	400	600	MCW	Milk	SS	DC	Cwt	EMA	Rib	RUMP	RBY%	IMF%
+3.7	+6.0	-2.4	+3.3	+38	+58	+76	+58	+14	+2.6	-3.3	+57	+3.4	+2.5	+3.9	-0.9	+1.9
51%	42%	61%	67%	67%	66%	67%	58%	54%	73%	36%	54%	48%	51%	55%	46%	54%
55	45	25	45	35	55	65	70	80	35	60	50	75	3	2	99	7

Traits Observed: CE,200WT,400WT,SS,FAT,EMA,IMF

Parent Verification: Sire: Verified, Dam: Not Verified

Notes: A classic easy-doing Pivot son. Well Structured, free moving with high fats and IMF for easy maintenance and quality carcass. Please note this bulls is unregistered.

Lot 11 DOODLE COOMA ULTIMATE U74 (PP)

Ident: DCPU074

Born: 24/08/2023

WIRRUNA LEAP FORWARD L95 (ET) (PP)
 WILLACK PEARCE P544 (AI) (PP)
 CHESTER QUEEN G37 (P)
 Sire: WILLACK REVOLUTION R620 (PP)
 WILLACK MONOGRAM (AI) (PP)
 WILLACK MICHAELA P540 (PP)
 WILLACK MIRA M465 (PP)
 ARDO HUSTLER 4110 (IMP NZL) (P)
 ELITE 4110 H297 (AI) (PP)
 ELITE FAVOURITE 0219 C133 (AI) (P)
 Dam: KANIMBLA ACACIA P060 (AI) (P)
 GLENDAN PARK CLASS ACT C136 (AI) (P)
 MT RAVEN ACACIA F078 (S)
 MT RAVEN ACACIA C008 (P)

\$ Index Values

Sustainability Production Index: +\$124
 MSA Production Index: +\$108



February 2025 Hereford BREEDPLAN

CE (DIR)	CE (DTRS)	GL	BW	200	400	600	MCW	Milk	SS	DC	Cwt	EMA	Rib	RUMP	RBY%	IMF%
-0.2	+5.5	-4.0	+4.6	+36	+63	+80	+91	+13	+2.6	-4.8	+55	+3.1	-0.4	-0.3	+1.6	-0.4
55%	42%	70%	75%	74%	73%	74%	63%	59%	75%	34%	57%	50%	53%	57%	45%	56%
70	50	8	65	45	40	55	15	85	35	30	55	80	93	90	15	97

Traits Observed: CE,200WT,400WT,SS,FAT,EMA,IMF,Genomics

Parent Verification: Sire: Verified, Dam: Not Tested

Notes: U074 embodies the favourable Kanimbla maternal traits in his Dam P060 contributing to his Top 8% for short gestation period. Good length, head and tight sheath. Suitable for any commercial program - not be underestimated

Lot 12 DOODLE COOMA UNONOW U92 (PP)

Ident: DCPU092

Born: 29/08/2023

NJW 79Z Z311 ENDURE 173D (IMP USA) (ET) (PP)
 KANIMBLA QUANTUM Q021 (AI) (PP)
 KANIMBLA CENTREFOLD M022 (AI) (PP)
 Sire: KANIMBLA QUANTUM S015 (AI) (PP)
 DAYS FLEETWOOD K185 (PP)
 KANIMBLA JENNY N027 (P)
 KANIMBLA JENNY H002 (AI) (P)
 ALLENDALE VAGABOND A74 (AI) (P)
 YARAWA SOUTH MINSTREL M115 (AI) (PP)
 YARAWA SOUTH FAVOURITE J119 (P)
 Dam: DOODLE COOMA INNOVATION 305 (P)
 BOWEN HAWLEY H54 (AI) (P)
 DOODLE COOMA INNOVATION 279 (P)
 DOODLE COOMA INNOVATION 241 (P)

\$ Index Values

Sustainability Production Index: +\$93
 MSA Production Index: +\$90



February 2025 Hereford BREEDPLAN

CE (DIR)	CE (DTRS)	GL	BW	200	400	600	MCW	Milk	SS	DC	Cwt	EMA	Rib	RUMP	RBY%	IMF%
-7.0	+6.0	+0.4	+6.3	+37	+50	+61	+52	+16	+0.3	-2.7	+36	+4.3	+2.4	+3.9	-0.8	+0.9
51%	38%	67%	73%	72%	71%	71%	59%	56%	73%	30%	54%	47%	51%	55%	43%	53%
90	45	75	90	40	80	90	80	65	100	70	96	50	4	2	98	45

Traits Observed: CE,200WT,400WT,SS,FAT,EMA,IMF,Genomics

Parent Verification: Sire: Verified, Dam: Not Verified

Notes: This athletic, easy doing bull shows excellent muscle expression with high fats. Structurally very sound with a tight sheath and good eye.

Lot 13 DOODLE COOMA URQUHART U94 (S)

Ident: DCPU094

Born: 30/08/2023

KOANUI UNANIMOUS 0408 (P)
 KOANUI TECHNO 3062 (IMP NZL) (PP)
 KOANUI BLUSH 6455 (P)
 Sire: WEETALIBA PIVOT P3 (AI) (PP)
 KOANUI BLUSH 6455 (P)
 WEETALIBA MARINDA L14 (AI) (P)
 WEETALIBA MARINDA G12 (P)
 GLENTREVOR WALLACE H427 (AI) (PP)
 DOODLE COOMA QUANTUM 006 (S)
 DOODLE COOMA ALBANY LASS (P)
 Dam: DOODLE COOMA MINERVA 53 (P)
 BOWEN HELGA H120 (P)
 DOODLE COOMA MINERVA 42 (P)
 DOODLE COOMA MINERVA 17 (P)

\$ Index Values

Sustainability Production Index: +\$172
 MSA Production Index: +\$182



February 2025 Hereford BREEDPLAN

CE (DIR)	CE (DTRS)	GL	BW	200	400	600	MCW	Milk	SS	DC	Cwt	EMA	Rib	RUMP	RBY%	IMF%
+12.6	+8.6	-3.9	+1.3	+31	+53	+69	+43	+16	+3.4	-3.4	+56	+3.5	+2.5	+3.8	-0.5	+1.8
56%	44%	69%	75%	74%	73%	74%	63%	59%	75%	37%	58%	52%	54%	58%	44%	57%
20	30	8	15	75	75	80	90	65	15	60	55	70	3	3	96	9

Traits Observed: CE,200WT,400WT,SS,FAT,EMA,IMF,Genomics

Parent Verification: Sire: Verified, Dam: Not Tested

Notes: **Wow! This is a GOOD bull. Great skin and hair - top 3% fats, high IMF and scrotal size. Highest indexing bull in our sale. This bull will take your herd to the next level. If he didn't have scurs he would have made our Wodonga National team.**

Lot 14 DOODLE COOMA UNDERLINE U95 (PP)

Ident: DCPU095

Born: 30/08/2023

WIRRUNA LEAP FORWARD L95 (ET) (PP)
 WILLACK PEARCE P544 (AI) (PP)
 CHESTER QUEEN G37 (P)
 Sire: WILLACK REVOLUTION R620 (PP)
 WILLACK MONOGRAM (AI) (PP)
 WILLACK MICHAELA P540 (PP)
 WILLACK MIRA M465 (PP)
 NJW 79Z Z311 ENDURE 173D (IMP USA) (ET) (PP)
 KANIMBLA QUANTUM Q021 (AI) (PP)
 KANIMBLA CENTREFOLD M022 (AI) (PP)
 Dam: KANIMBLA LASS S010 (AI) (P)
 MAWARRA MANITOBA J051 (AI) (ET) (PP)
 KANIMBLA LASS P029 (P)
 KANIMBLA LASS J016 (TW) (P)

\$ Index Values

Sustainability Production Index: +\$166
 MSA Production Index: +\$165



SCAN FOR VIDEO

- Scan the QR code with your smartphone camera
- Click the pop up link on the screen
- Watch Lot 14 YouTube Video

February 2025 Hereford BREEDPLAN

CE (DIR)	CE (DTRS)	GL	BW	200	400	600	MCW	Milk	SS	DC	Cwt	EMA	Rib	RUMP	RBY%	IMF%
+10.0	+10.3	-4.4	+4.3	+41	+65	+85	+81	+14	+1.7	-3.9	+65	+3.9	+1.6	+2.8	+0.2	+0.9
53%	39%	69%	75%	73%	72%	72%	61%	56%	74%	31%	54%	48%	51%	55%	41%	54%
30	15	6	60	20	30	45	25	80	80	50	25	60	20	10	80	45

Traits Observed: CE,200WT,400WT,SS,FAT,EMA,IMF,Genomics

Parent Verification: Sire: Verified, Dam: Not Tested

Notes: **A Revolution son with typical calving ease plus even more growth punch. Solid carcass EBVs. A thick, easy doing bull to make your finishing steers hit a premium.**

Lot 15 DOODLE COOMA UNION JACK U98 (PP)

Ident: DCPU098

Born: 31/08/2023

KOANUI UNANIMOUS 0408 (P)
 KOANUI TECHNO 3062 (IMP NZL) (PP)
 KOANUI BLUSH 6455 (P)
 Sire: WEETALIBA PIVOT P3 (AI) (PP)
 DAYS CALIBRE G74 (PP)
 WEETALIBA MARINDA L14 (AI) (P)
 WEETALIBA MARINDA G12 (P)
 SEVENBARDOT GOLIATH K80 (AI) (PP)
 JACLINTON MAGNUM M80 (PP)
 JACLINTON LEONIE (AI) (P)
 Dam: DOODLE COOMA MAY 50 (P)
 BOWEN HELGA H120 (P)
 DOODLE COOMA MAY 37 (P)
 DOODLE COOMA MAY 11 (P)

\$ Index Values

Sustainability Production Index: +\$157
 MSA Production Index: +\$150



February 2025 Hereford BREEDPLAN

CE (DIR)	CE (DTRS)	GL	BW	200	400	600	MCW	Milk	SS	DC	Cwt	EMA	Rib	RUMP	RBY%	IMF%
+4.0	+4.6	-2.4	+5.3	+43	+64	+96	+96	+6	+2.1	-1.8	+63	+2.4	+1.0	+1.5	-0.1	+1.3
56%	44%	68%	75%	73%	72%	73%	62%	58%	75%	36%	57%	51%	54%	58%	45%	57%
55	55	25	75	15	35	20	8	100	60	85	30	92	45	40	90	25

Traits Observed: CE,200WT,400WT,SS,FAT,EMA,IMF,Genomics

Parent Verification: Sire: Verified, Dam: Not Tested

Notes: **A stylish bull with a lovely head and eye. Top 15% 200 days growth and above average fat and IMF. U098 is one of the youngest bulls in our line up certainly with a great outlook.**

16 SCHIPPS RED UGANDA U09 (MAF) (NHF) (OSF) DC U09



Born: 06/05/2023 Tattoo: DC U09
 --C-T GRAND STATEMENT 1025 (AMF) (MAF) (NHF) (OSF)
 Sire: YALLAMBEE GRAND STATEMENT Q40 (AI) (AMF) (MAF) (NHF) (OSF) YRAQ40
 --YALLAMBEE GIA N19
 --TRIPLE M LUNCH MONEY (ET) (AMF) (MAF) (NHF) (OSF)
 Dam: SCHIPPS RED WING Q44 DC Q44
 --SCHIPPS RED WING K08



February 2025 Red Angus BREEDPLAN

GROUP BREEDPLAN RED ANGUS	BW	200W	400W	600W	Milk	EMA	RIB	CWT%	IMF%
	+3.1	+32	+52	+61	+13	+0.2	+0.3	+39	+0.3
	55%	63%	61%	64%	33%	44%	53%	54%	42%
\$ Index	Sustainable Breeder		+\$30	Supermarket		+\$37	Northern Steer		+\$38
Breed Ave			+\$43			+\$45			+\$50

As with all Grand Statement calves, U09 is structurally sound and easy doing. This is a sire ready to work with above average early growth, milk and fats.

Purchaser..... \$.....

17 SCHIPPS RED ULTRA U10 (MAF) (NHF) (OSF) DC U10



Born: 06/05/2023 Tattoo: DC U10
 --C-T GRAND STATEMENT 1025 (AMF) (MAF) (NHF) (OSF)
 Sire: YALLAMBEE GRAND STATEMENT Q40 (AI) (AMF) (MAF) (NHF) (OSF) YRAQ40
 --YALLAMBEE GIA N19
 --G A R DRIVE (BLACK) (AMF) (NHF) (OSF)
 Dam: DUNOON DANDLOO Q542 (BLACK) (AMF) (MAF) (NHF) (OSF) ANGBHRQ542
 --DUNOON DANDLOO M1206 (BLACK)



February 2025 Red Angus BREEDPLAN

GROUP BREEDPLAN RED ANGUS	BW	200W	400W	600W	Milk	EMA	RIB	CWT%	IMF%
	+4.6	+41	+68	+87		+2.5	+0.3	+56	+0.9
	49%	58%	55%	61%		39%	46%	48%	33%
\$ Index	Sustainable Breeder		+\$57	Supermarket		+\$62	Northern Steer		+\$99
Breed Ave			+\$43			+\$45			+\$50

DC U10 is out of Dunoon Dandloos Q542, a lovely black cow. A high indexing bull with solid growth, muscle and IMF. This pedigree is unique in the Red Angus breed, aligning to a higher reserve on this bull. U10 is quiet, possesses sound feet, and would certainly enhance the profitability and performance of your herd. A great opportunity.

Purchaser..... \$.....

18 SCHIPPS RED ULTIMO U16 (MAF) (NHF) (OSF) DC U16



Born: 08/05/2023 Tattoo: DC U16
 --C-T GRAND STATEMENT 1025 (AMF) (MAF) (NHF) (OSF)
 Sire: YALLAMBEE GRAND STATEMENT Q40 (AI) (AMF) (MAF) (NHF) (OSF) YRAQ40
 --YALLAMBEE GIA N19
 --SCHIPPS RED NEVADA N16 (AI) (AMF) (MAF) (NHF) (OSF)
 Dam: SCHIPPS RED DOVE R29 DC R29
 --SCHIPPS RED DOVE M74



February 2025 Red Angus BREEDPLAN

GROUP BREEDPLAN RED ANGUS	BW	200W	400W	600W	Milk	EMA	RIB	CWT%	IMF%
	+5.1	+43	+71	+92	+11	+3.0	-0.6	+61	+0.1
	53%	62%	59%	65%	29%	44%	53%	53%	41%
\$ Index	Sustainable Breeder		+\$60	Supermarket		+\$68	Northern Steer		+\$100
Breed Ave			+\$43			+\$45			+\$50

U16 is a long, strong spined bull, good on his feet and legs. High EBV's for growth and Eye Muscle. Top 1% in Northern Steer Index.

Purchaser..... \$.....

19

SCHIPPS RED UARDRY U24 (MAF) (NHF) (OSF) DC U24



Born: 10/05/2023 Tattoo: DC U24
 --C-T GRAND STATEMENT 1025 (AMF) (MAF) (NHF) (OSF)
 Sire: YALLAMBEE GRAND STATEMENT Q40 (AI) (AMF) (MAF) (NHF) (OSF) YRAQ40
 --YALLAMBEE GIA N19
 --SCHIPPS RED NEVADA N16 (AI) (AMF) (MAF) (NHF) (OSF)
 Dam: SCHIPPS RED CHRISTA R12 DC R12
 --SCHIPPS RED CHRISTA N88



February 2025 Red Angus BREEDPLAN									
GROUP BREEDPLAN RED ANGUS	BW	200W	400W	600W	Milk	EMA	RIB	CWT%	IMF%
	+4.4	+39	+66	+89	+11	+1.6	-0.5	+55	+0.0
	53%	62%	59%	65%	28%	44%	52%	53%	40%
\$ Index	Sustainable Breeder		+\$36	Supermarket		+\$47	Northern Steer		+\$83
Breed Ave			+\$43			+\$45			+\$50

U24 possesses high growth, scrotal and meat yield. A good tight sheath and sound structure. All the Grand Statement calves were born small and easy.

Purchaser..... \$.....

20

SCHIPPS RED UTOPIA U27 (MAF) (NHF) (OSF) DC U27



Born: 11/05/2023 Tattoo: DC U27
 --C-T GRAND STATEMENT 1025 (AMF) (MAF) (NHF) (OSF)
 Sire: YALLAMBEE GRAND STATEMENT Q40 (AI) (AMF) (MAF) (NHF) (OSF) YRAQ40
 --YALLAMBEE GIA N19
 --PARINGA RED EXPECTATION F168(AI)(ET) (NHC)
 Dam: SCHIPPS RED WING J06 (NHF) DC J06
 --SCHIPPS RED WING G25



February 2025 Red Angus BREEDPLAN									
GROUP BREEDPLAN RED ANGUS	BW	200W	400W	600W	Milk	EMA	RIB	CWT%	IMF%
	+2.1	+26	+39	+43	+12	+1.3	+1.0	+29	+0.7
	58%	64%	62%	65%	37%	45%	54%	55%	43%
\$ Index	Sustainable Breeder		+\$46	Supermarket		+\$48	Northern Steer		+\$33
Breed Ave			+\$43			+\$45			+\$50

U27 showcases a low birthweight EBV and suitable for heifers. This easy doing, athletic bull is out of a long stay Paringa Expectation cow - a sire that took our herd to a higher level.

Purchaser..... \$.....

21

SCHIPPS RED ULTIMO U34 (MAF) (NHF) (OSF) DC U34



Born: 13/05/2023 Tattoo: DC U34
 --C-T GRAND STATEMENT 1025 (AMF) (MAF) (NHF) (OSF)
 Sire: YALLAMBEE GRAND STATEMENT Q40 (AI) (AMF) (MAF) (NHF) (OSF) YRAQ40
 --YALLAMBEE GIA N19
 --TRIPLE M LUNCH MONEY (ET) (AMF) (MAF) (NHF) (OSF)
 Dam: SCHIPPS RED FEATHER Q43 DC Q43
 --SCHIPPS RED FEATHER L19 (NHF)



February 2025 Red Angus BREEDPLAN									
GROUP BREEDPLAN RED ANGUS	BW	200W	400W	600W	Milk	EMA	RIB	CWT%	IMF%
	+3.7	+37	+56	+67	+16	+1.4	+0.1	+44	+0.2
	54%	63%	61%	64%	33%	44%	53%	54%	42%
\$ Index	Sustainable Breeder		+\$46	Supermarket		+\$47	Northern Steer		+\$54
Breed Ave			+\$43			+\$45			+\$50

A bull with more stretch and scale while still retaining sound structure and easy doing ability. Some breed favourites in this pedigree - Mulberry, Mission Statement and Te Mania XPO.

Purchaser..... \$.....

22 SCHIPPS RED UTAH U43 (MAF) (NHF) (OSF) DC U43



Born: 20/05/2023 Tattoo: DC U43
 --C-T GRAND STATEMENT 1025 (AMF) (MAF) (NHF) (OSF)
 Sire: YALLAMBEE GRAND STATEMENT Q40 (AI) (AMF) (MAF) (NHF) (OSF) YRAQ40
 --YALLAMBEE GIA N19
 --TRONAR JAGER
 Dam: SCHIPPS RED DOVE M31 DC M31
 --SCHIPPS RED DOVE G50



February 2025 Red Angus BREEDPLAN									
GROUP BREEDPLAN RED ANGUS	BW	200W	400W	600W	Milk	EMA	RIB	CWT%	IMF%
	+3.3	+35	+52	+57	+17	+1.1	+1.0	+37	+0.9
	55%	63%	61%	64%	32%	45%	53%	54%	42%
\$ Index	Sustainable Breeder		+560	Supermarket		+558	Northern Steer		+552
Breed Ave			+543			+545			+550

We really like this quiet sire, good fats, milk and IMF. Above average in all indexes. Easy doing progeny for the tough times. Certainly a bull to consider.

Purchaser..... \$.....

23 SCHIPPS RED UKI U52 (MAF) (NHF) (OSF) DC U52



Born: 16/07/2023 Tattoo: DC U52
 --C-T GRAND STATEMENT 1025 (AMF) (MAF) (NHF) (OSF)
 Sire: YALLAMBEE GRAND STATEMENT Q40 (AI) (AMF) (MAF) (NHF) (OSF) YRAQ40
 --YALLAMBEE GIA N19
 --BOLTON GIRLS WHISPERS JACKPOT (AI) (ET) (AMF) (MAF) (NHF) (OSF)
 Dam: SCHIPPS RED DOVE P31 DC P31
 --SCHIPPS RED DOVE G51



February 2025 Red Angus BREEDPLAN									
GROUP BREEDPLAN RED ANGUS	BW	200W	400W	600W	Milk	EMA	RIB	CWT%	IMF%
	+3.5	+30	+45	+56	+13	+1.4	+0.5	+34	+0.3
	52%	61%	61%	57%	32%	42%	50%	51%	39%
\$ Index	Sustainable Breeder		+540	Supermarket		+542	Northern Steer		+540
Breed Ave			+543			+545			+550

A mobile bull with a strong spine, and tight sheath. U52 brings in new Bolton Girls bloodlines. Good milk and fats EBVs.

Purchaser..... \$.....

24 SCHIPPS RED ULAN U54 (MAF) (NHF) (OSF) DC U54



Born: 18/07/2023 Tattoo: DC U54
 --C-T GRAND STATEMENT 1025 (AMF) (MAF) (NHF) (OSF)
 Sire: YALLAMBEE GRAND STATEMENT Q40 (AI) (AMF) (MAF) (NHF) (OSF) YRAQ40
 --YALLAMBEE GIA N19
 --TRIPLE M LUNCH MONEY (ET) (AMF) (MAF) (NHF) (OSF)
 Dam: SCHIPPS RED VALE R06 DC R06
 --SCHIPPS RED VALE K18



February 2025 Red Angus BREEDPLAN									
GROUP BREEDPLAN RED ANGUS	BW	200W	400W	600W	Milk	EMA	RIB	CWT%	IMF%
	+4.4	+39	+54	+71	+15	+0.5	-0.6	+42	-0.2
	52%	61%	61%	57%	30%	42%	50%	51%	39%
\$ Index	Sustainable Breeder		+538	Supermarket		+526	Northern Steer		+540
Breed Ave			+543			+545			+550

Strong Growth and Milk figures on this bull. Good temperament and mobility. Out of Schipps Red Vale R06 cow a productive and consistent cow.

Purchaser..... \$.....

25 SCHIPPS RED UNITY U56 (MAF) (NHF) (OSF) DC U56



Born: 20/07/2023 Tattoo: DC U56
 --C-T GRAND STATEMENT 1025 (AMF) (MAF) (NHF) (OSF)
 Sire: YALLAMBEE GRAND STATEMENT Q40 (AI) (AMF) (MAF) (NHF) (OSF) YRAQ40
 --YALLAMBEE GIA N19
 --PARINGA RED EXPECTATION F168(AI)(ET) (NHC)
 Dam: SCHIPPS RED WING J57 (NHF) DC J57
 --SCHIPPS RED WING G58



February 2025 Red Angus BREEDPLAN									
BW	200W	400W	600W	Milk	EMA	RIB	CWT%	IMF%	
+5.0	+40	+73	+86	+10	+3.1	-0.2	+60	+0.6	
53%	62%	63%	58%	37%	44%	51%	53%	41%	
\$ Index	Sustainable Breeder		+58	Supermarket		+77	Northern Steer		+96
Breed Ave			+43			+45			+50

Another cracking bull out of an Expectation cow with even more growth, meat yield, eye muscle and IMF. Well-above average on Indexes and he shows all these traits visually. A unique bull as a rare package so we will place a higher reserve on him.

Purchaser: \$

26 SCHIPPS RED ULYSSES U75 (MAF) (NHF) (OSF) DC U75



Born: 22/09/2023 Tattoo: DC U75
 --ROSEMULLION RED NORTON (ET)
 Sire: BOONYOUIN RED ROCK R32 MAKR32
 --BOONYOUIN BLACK MOLLY M7 (BLACK RC)
 --SCHIPPS RED NAVIGATOR N25 (AI) (AMF) (MAF) (NHF) (OSF)
 Dam: SCHIPPS RED WING S20 DC S20
 --SCHIPPS RED WING K13



February 2025 Red Angus BREEDPLAN									
BW	200W	400W	600W	Milk	EMA	RIB	CWT%	IMF%	
+4.1	+31	+50	+62	+7	+1.1	-0.7	+39	+0.0	
48%	58%	59%	52%	30%	38%	45%	47%	33%	
\$ Index	Sustainable Breeder		+35	Supermarket		+39	Northern Steer		+44
Breed Ave			+43			+45			+50

First of our younger Boonyouin Red Rock bulls to sell. U75 is a September drop showing the attributes we were hoping for - easy fleshing, visual muscle and good structure. A nice tempered addition who will continue growing into a strong, eye-catching sire.

Purchaser: \$

27 SCHIPPS RED UKRAINE U81 (MAF) (NHF) (OSF) DC U81



Born: 23/09/2023 Tattoo: DC U81
 --SCHIPPS RED NAVIGATOR N25 (AI) (AMF) (MAF) (NHF) (OSF)
 Sire: SCHIPPS RED SILVER S04 (MAF) (NHF) (OSF) DC S04
 --SCHIPPS RED CRYSTAL P06
 --SCHIPPS RED MONET M24 (AMF) (MAF) (NHF) (OSF)
 Dam: SCHIPPS RED EMPRESS Q15 DC Q15
 --SCHIPPS RED EMPRESS M11



February 2025 Red Angus BREEDPLAN									
BW	200W	400W	600W	Milk	EMA	RIB	CWT%	IMF%	
+3.7	+29	+46	+60	+10	+0.5	-0.5	+37	+0.4	
49%	61%	63%	57%	34%	43%	50%	52%	39%	
\$ Index	Sustainable Breeder		+23	Supermarket		+26	Northern Steer		+38
Breed Ave			+43			+45			+50

A late September bull by a homebred sire. Very tidy structure and easy doing. High scrotal EBV for fertility. Lovely skin and head on this bull - a great heifer bull.

Purchaser: \$

28 SCHIPPS RED UNION JACK U86 (MAF) (NHF) (OSF) DC U86



Born:
25/09/2023

Tattoo: DC U86

Sire: SCHIPPS RED NAVIGATOR N25 (AI) (AMF) (MAF) (NHF) (OSF)
SCHIPPS RED SILVER S04 (MAF) (NHF) (OSF) DC S04
--SCHIPPS RED CRYSTAL P06
--TRIPLE M LUNCH MONEY (ET) (AMF) (MAF) (NHF) (OSF)
Dam: SCHIPPS RED FEATHER P52 DC P52
--SCHIPPS RED FEATHER K51 (NHF)



February 2025 Red Angus BREEDPLAN

GROUP BREEDPLAN RED ANGUS	BW	200W	400W	600W	Milk	EMA	RIB	CWT%	IMF%
	+3.8	+34	+42	+59	+13	+0.4	-0.3	+34	+0.1
	51%	63%	63%	59%	33%	46%	54%	54%	44%
\$ Index	Sustainable Breeder		+\$26	Supermarket		+\$5	Northern Steer		+\$21
Breed Ave			+\$43			+\$45			+\$50

Another Silver son whose calves were born early and easily. Great testicles, tight sheath and good feet - fundamental traits for a bulls longevity.

Purchaser..... \$.....

29 SCHIPPS RED UNLIMITED U98 (MAF) (NHF) (OSF) DC U98



Born:
04/10/2023

Tattoo: DC U98

Sire: SCHIPPS RED NAVIGATOR N25 (AI) (AMF) (MAF) (NHF) (OSF)
SCHIPPS RED SILVER S04 (MAF) (NHF) (OSF) DC S04
--SCHIPPS RED CRYSTAL P06
--MILWILLAH MARBLE BAR J53 (AMF) (MAF) (NHF) (OSF)
Dam: SCHIPPS RED EMPRESS N24 (AI) DC N24
--SCHIPPS RED EMPRESS G68



February 2025 Red Angus BREEDPLAN

GROUP BREEDPLAN RED ANGUS	BW	200W	400W	600W	Milk	EMA	RIB	CWT%	IMF%
	+4.2	+35	+52	+68	+12	+1.6	+0.0	+42	+1.0
	51%	62%	63%	59%	36%	45%	54%	54%	44%
\$ Index	Sustainable Breeder		+\$42	Supermarket		+\$34	Northern Steer		+\$60
Breed Ave			+\$43			+\$45			+\$50

A bull that is typical of the Silvers - easy doing, good structure, solid carcass and easy to have around. High IMF and brings in the impressive Milwillah Marble Bar sire.

Purchaser..... \$.....

NOTES



THANK YOU

THANK YOU FOR SUPPORTING SCHIPPS RED ANGUS AND
76 YEARS OF DOODLE COOMA POLL HEREFORDS