

Doodle Cooma Celebrating 75 years as Poll Hereford Breeders

**SCHIPPS RED ANGUS &
DOODLE COOMA POLL
HEREFORDS**

**SCHIPPS BEEF
PRODUCTION SALE**

FRIDAY 19TH APRIL, 2024 1PM

**ONLINE SALE VIA
AUCTIONSPLUS**

**SIMULTANEOUS
AUCTION**



DARYL SCHIPP 0427 227 590





SCHIPPS BEEF PRODUCTION SALE

FRIDAY 19TH APRIL, 2024

STARTING 1.00PM

ONLINE VIA AUCTIONS PLUS
Simultaneous Auction

**Vendor: The Schipp Family of
Doodle Cooma Pastoral Company Pty Ltd.**

'Glandore' 2941 Sturt Hwy, Alfredtown, NSW

ON - PROPERTY INSPECTION DAYS

THURSDAY 11th APRIL, 10AM - 2PM
&

SATURDAY 13th APRIL, 10AM - 2PM

ENTER VIA TUMBARUMBA ROAD DRIVEWAY

Daryl Schipp
0427 227 590

Adam Schipp
0458 394 288

Zoe Schipp 0447 412 677



RYAN BAJADA
0435 411 536
ryan.bajada@elders.com.au

JACOB KERRISK
0457 516 070
jacob.kerrisk@elders.com.au



SCOTT MYERS
0428 763 434
scott@hfrancisandco.com.au



Welcome to the Schipps Beef Production Sale

What a time to be part of the beef industry. We cracked another decent year - season wise - despite predictions and cattle prices have rebounded to a solid level in the New Year. Now more than ever, your sires need to be fit and ready to go to get those females in calf. This combined with calving ease, modern genetics, doing ability and a quiet temperament are the keys to profit.

As a family run business, we put every effort and resource into improving our property and cattle. We have a long term commitment to the industry and this is evident in our approach to breeding - we are not after any short term fixes or fads but are focused on improving the traits that will have a benefit to the profitability of our clients.

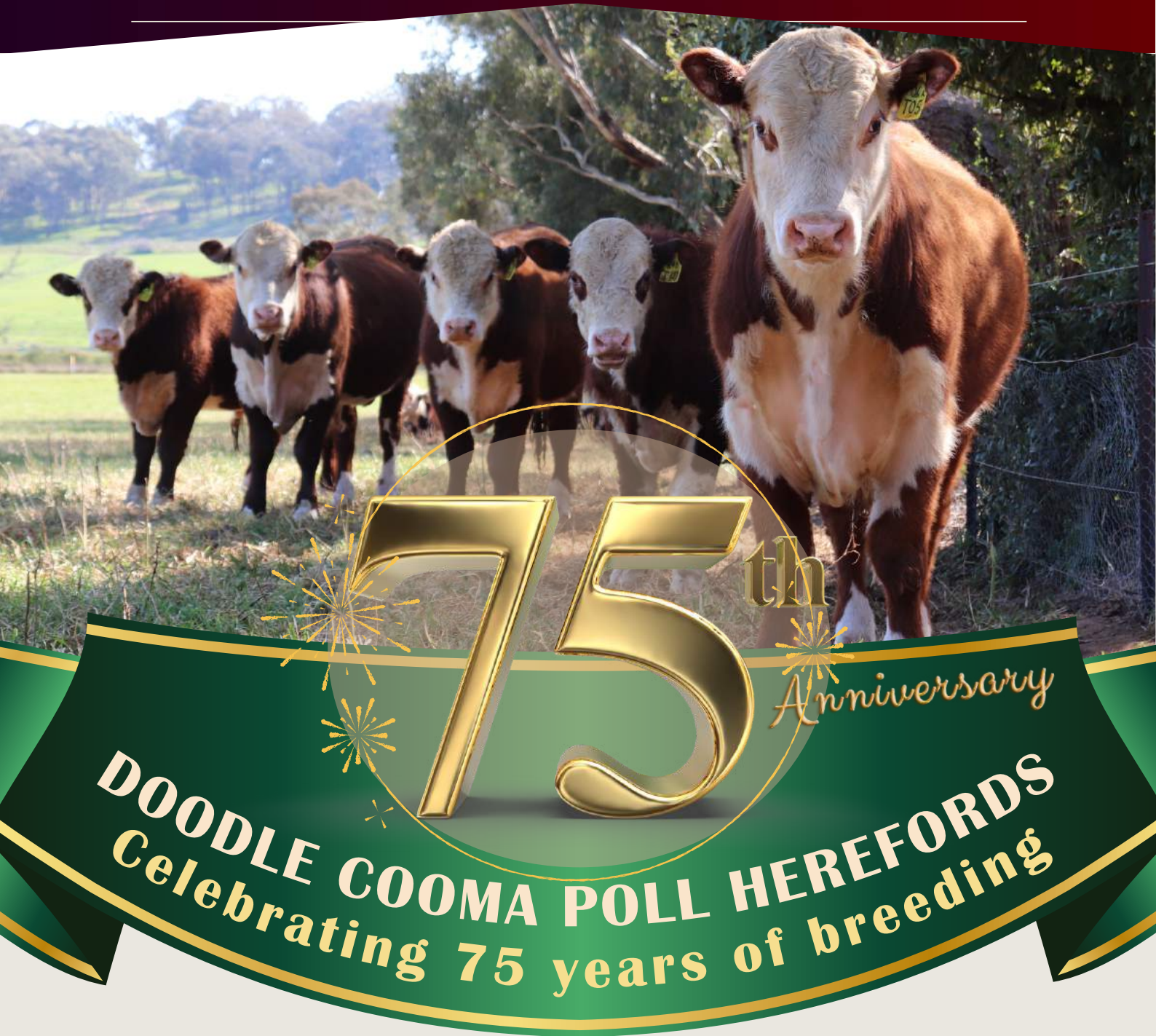
Showcasing a quality run of Doodle Cooma Poll Hereford bulls and vendor bred Schipps Red Angus grass-fed bulls.

All bulls demonstrate excellent temperament, sound feet and structure. Figures show good growth, muscle and calving ease.

ANIMAL HEALTH

All bulls have received the following assessments/treatments:

- ✓ All bulls have been ear notched or blood tested a Bovine Viral Diarrhea (BVD) negative
 - ✓ Fully vaccinated with 7 in 1 and drenched to control any internal/external parasites
 - ✓ Semen Tested
 - ✓ DNA Tested - sire verified
 - ✓ Doodle Cooma Pastoral Co. is recorded at JBAS 6. All cattle are free to travel to all areas of NSW, VIC, TAS, SA & QLD.
 - ✓ VIBRIOVAX vaccinated
 - ✓ Covered by Schipps "Fair Go" Guarantee
-

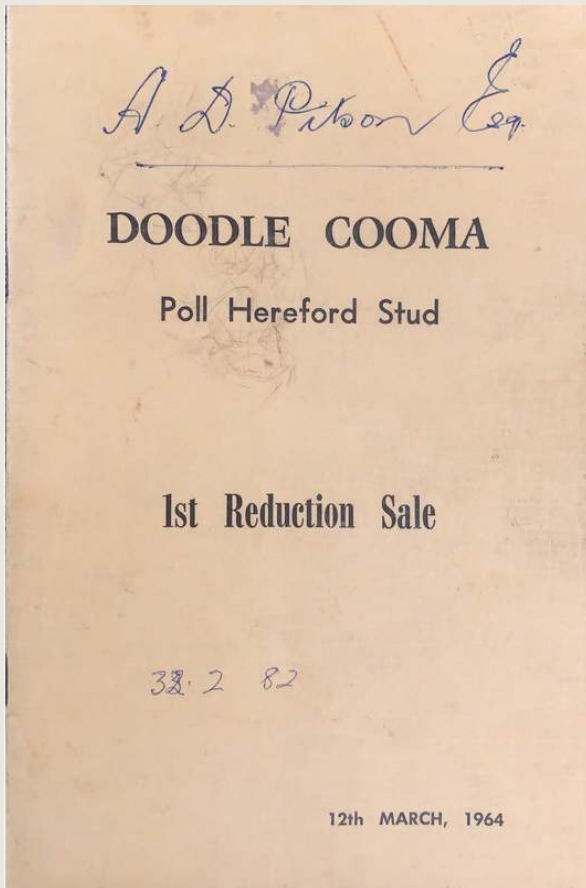


Doodle Cooma (Aboriginal for "Sweet Waters") Poll Herefords was founded at Henty NSW in 1949 by Alf Piston. Based on the best of Cudgeena females the stud was successful from the start with many other studs founded with Doodle Cooma Females.

In 1971 the stud was purchased by the Schipp family and moved to Wagga Wagga. Daryl took over the management of the stud in 1975, while still at high school, when Hon. Joe Schipp OAM, entered state politics.

NBRS Performance recording was commenced in 1976 along with the purchase of many renowned top sires and A.I programs using the best bulls available- Australian and International.
(Continue Page 4)

Doodle Cooma Poll Herefords



Doodle Cooma Sale Catalogue 1964



Our bulls have always had plenty of meat.
Doodle Cooma Developer 1978

Right: Doodle Cooma Sale Catalogue 1997, featuring stud cow Doodle Cooma Marvel 184 with the best growth EBVs of any Poll Hereford cow offered in Australia that year.

The stud held a number of successful bull sales through the 90's with many studs and top commercial herds purchasing sires and females.

The millennium drought caught up with Doodle Cooma and the stud cow numbers dropped from around 100 to 80 but a solid core of commercial buyers kept bull sales ticking over. Doodle Cooma commenced a program of selling their top bulls at Wodonga and the Dubbo National Show & Sales with good success. Cattle have been sold to all Eastern states including Tasmania, where a bull purchased at Wodonga won Senior Champion at Hobart Royal Show.


In recent years, Doodle Cooma has re-intensified its A.I program and with strict culling has quickly upgraded the cattle and improved all EBV figures. A balanced approach to breeding has provided us with cattle that can win at shows but have performance to be profitable in a value based commercial beef industry.

The Schipp Family have enjoyed shaping the Doodle Cooma Poll Hereford stud to what it is today, and hope for many more successful years.


DOODLE COOMA

Poll Hereford Bull & Female Sale


Thursday, March 6th, 1997




POLL HEREFORD GROUP BREEDPLAN EBVs					
Birth Weight (kg)	Genetic Milk (kg)	200-Day Growth (kg)	400-Day Weight (kg)	600-Day Weight (kg)	Acc
+5.2	+9	+25	+41	+58	72%
72%	21%	69%	67%	67%	



POLL HEREFORD GROUP BREEDPLAN EBVs					
Birth Weight (kg)	Genetic Milk (kg)	200-Day Growth (kg)	400-Day Weight (kg)	600-Day Weight (kg)	Acc
+3.6	+6	+22	+41	+51	54%
54%	28%	32%	53%	58%	



POLL HEREFORD GROUP BREEDPLAN EBVs					
Birth Weight (kg)	Genetic Milk (kg)	200-Day Growth (kg)	400-Day Weight (kg)	600-Day Weight (kg)	Acc
+3.1	+4	+20	+36	+51	59%
59%	20%	58%	64%	65%	



POLL HEREFORD GROUP BREEDPLAN EBVs					
Birth Weight (kg)	Genetic Milk (kg)	200-Day Growth (kg)	400-Day Weight (kg)	600-Day Weight (kg)	Acc
+0.8	+3	+25	+42	+51	48%
48%	63%	74%	70%	70%	

Where else would you buy performance like this at our reasonable prices?

CONTACT:
Daryl Schipp — Wagga (069) 227590, Fax (069) 227979

We recommend RIVERINA CO-OP, Wagga.

Doodle Cooma Poll Herefords



Sorting through a client's steers

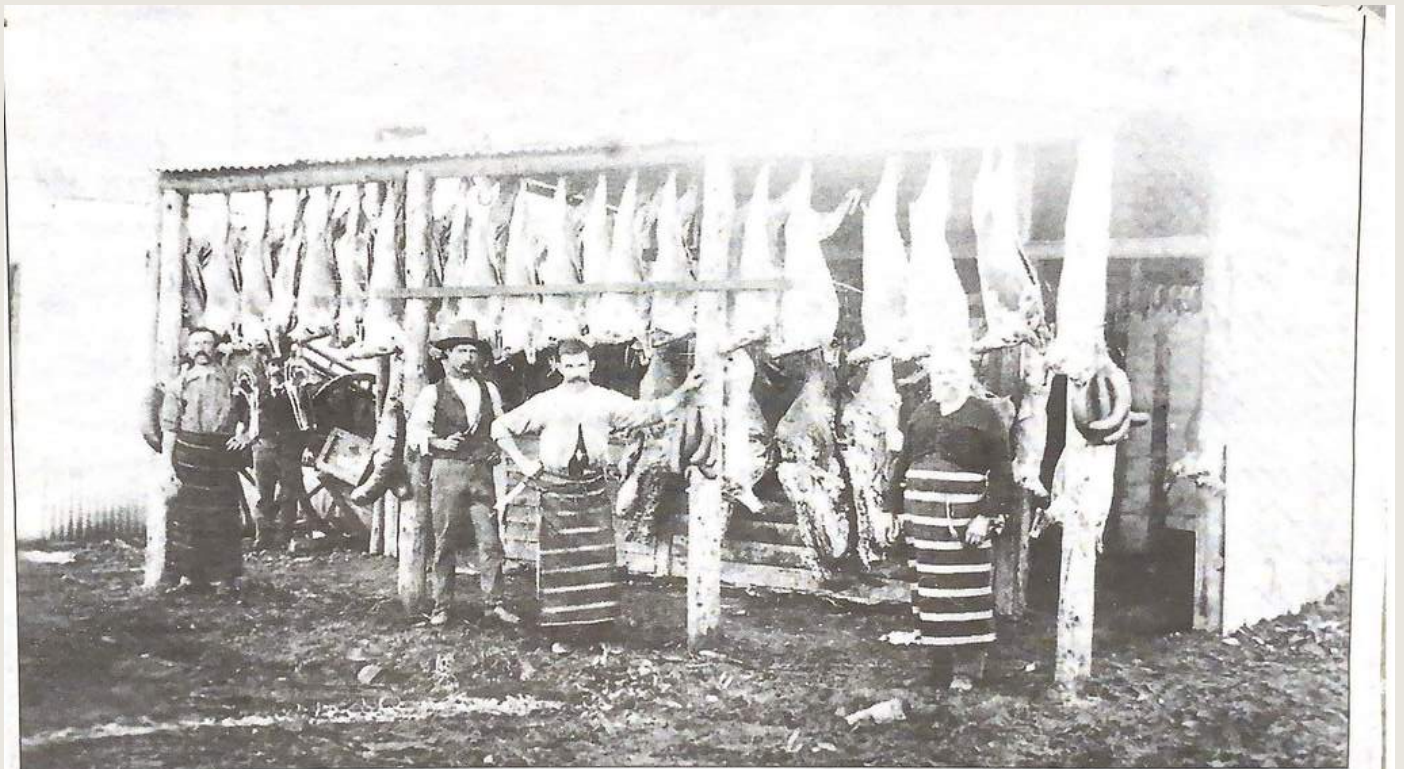


Doodle Cooma Quartz - A bull before his time. Large yet easy-fleshing.



Right: Steer ready for Sydney Royal Easter Show 2000

Below: How our forefathers used to do it!



This week's picture from the past was brought in by Joe Schipp of Wagga. Mr Schipp's great-grandfather, Thomas Edward Tucker is on the right in the picture. It is not certain where the photograph was taken, either at Top Town Temora or Barmedman. Mr Tucker's business must have been a thriving one judging from the number of sheep and quarters of beef on display. Of interest are what appears to be sausages hanging on the posts especially the ones on the second post at left. They are huge; the casing may have come from the intestines of a bullock rather than a sheep or pig. It is obvious that plenty of meat was needed to satisfy the hunger of hard working miners.

SCHIPPS RED ANGUS

A UNIQUE OPPORTUNITY

Schipp's Red Angus was established at Wagga Wagga in 1993.

"Red Angus cattle excel for temperament, maternal qualities and carcass characteristics. Red Angus and their crosses are keenly sought after by commercial producers as a cornerstone for their production system.

Red Angus have the ability to adapt to a vast range of the climatic conditions to be encountered across Australia"-
RASA

We will be offering a terrific line up of vendor bred, grass fed and excellent tempered Red Angus Bulls in the 2024 Schipp's Beef Production Sale.



This is an even line of Red Angus bulls suitable for large commercial production systems through to stud heifer joining.

This unique opportunity to view and purchase a run of ready-to-work red bulls, with impressive breeding values, feet and structure, is truly a moment not to be missed.

A FAIR GO

Our Bulls have been run with their mates all their lives. We suggest that you have some cattle in the yards when you get your bull home, allowing them to socialise together and so your new bull is not stressed. We also recommend at least 6 months insurance on your bull.

You have the Schipp family "Fair Go" Guarantee. If you have problems and you do not believe you have had a "Fair Go" from the bull within 6 months after purchase, talk to us and we will help.

Free delivery of your bull within 100ks of Wagga - or, for 2 or more bulls will offer free delivery to Dubbo.

VIDEOS

SCAN ME



WATCH LOT VIDEOS OF OUR POLL
HEREFORD AND RED ANGUS BULLS
ON OFFER!

SCAN THE QR CODE WITH
YOUR SMART PHONE CAMERA
OR [CLICK HERE](#) TO WATCH



Thank you to **BJS Livestock Photography**
for our Photos and Videos

BREEDPLAN - Understanding EBV's

ESTIMATED BREEDING VALUES (EBVs) The EBV is the best estimate of an animal's genetic merit for that trait.

ACCURACY: Accuracy is based on the amount of performance information available on the animal and its close relatives - particularly the number of progeny analysed. The higher the accuracy value the lower the likelihood of change in the animal's EBV as more information is analysed for that animal or its relatives. Even though an EBV with a low accuracy may change in the future, it is still the best estimate of an animal's genetic merit for that trait.

Gestation Length EBV (days) is an estimate of the time from conception to the birth of the calf and is based on ASI and hand mating records. Lower (negative) GL EBVs indicate shorter gestation length and therefore easier calving and increased growth after birth.

Birth Weight EBV (kg) is based on the measured birth weight of progeny, adjusted for dam age. The lower the value the lighter the calf at birth and the lower the likelihood of a difficult birth. This is particularly important when selecting sires for use over heifers.

200-Day Growth EBV (kg) is calculated from the weight of progeny taken between 80 and 300 days of age. Values are adjusted to 200 days and for age of dam. This EBV is the best single estimate of an animal's genetic merit for growth to early ages.

400-Day Weight EBV (kg) is calculated from the weight of progeny taken between 301 and 500 days of age, adjusted to 400 days and for age of dam. This EBV is the best single estimate of an animal's genetic merit for yearling weight.

600-Day Weight EBV (kg) is calculated from the weight of progeny taken between 501 and 900 days of age, adjusted to 600 days and for age of dam. This EBV is the best single estimate of an animal's genetic merit for growth beyond yearling age.

Mature Cow Weight EBV (kg) is based on the cow weight when the calf is weighed for weaning, adjusted to 5 years of age. This EBV is an estimate of the genetic difference in cow weight at 5 years of age and is an indicator of growth at later ages and potential feed maintenance requirements of the females in the breeding herd. Steer breeders wishing to grow animals out to a larger weight may also use the Mature Cow Weight EBV.

Milk EBV (kg) is an estimate of an animal's milking ability. For sires, this EBV indicates the effect of the daughter's milking ability, inherited from the sire, on the 200-day weights of her calves. For dams, it indicates her milking ability.

Scrotal Size EBV (cm) This EBV is an estimate of an animal's genetic merit for scrotal size. There is also a small negative correlation with age of puberty in female progeny and therefore selection for increased scrotal size will result in reduced age at calving of female progeny.

Carcase Weight EBV (kg) is based on abattoir carcass records and is an indicator of the genetic differences in carcass weight at the standard age of 650 days.

Eye Muscle Area EBV (sq cm) This EBV estimates genetic differences in eye muscle area at the 12/13th rib site of a 300 kg dressed carcass. More positive EBVs indicate better muscling on animals. Sires with relatively higher EMA EBVs are expected to produce better muscled and higher percentage yielding progeny at the same carcass weight than will sires with lower EMA EBVs.

Rib Fat and Rump Fat EBVs (mm) are calculated from measurements of subcutaneous fat depth at the 12/13th rib site and the P8 rump site and are adjusted to a standard 300 kg carcass. These EBVs are indicators of the genetic differences in fat distribution on a standard 300 kg carcass. Sires with low, or negative, fat EBVs are expected to produce leaner progeny at any particular carcass weight than will sires with higher EBVs.

Retail Beef Yield EBV (%) indicates genetic differences between animals for retail yield percentage in a standard 300 kg carcass. Sires with larger EBVs are expected to produce progeny with higher yielding carcasses.

Intramuscular Fat EBV (%) is an estimate of the genetic difference in the percentage of intramuscular fat at the 12/13th rib site in a 300 kg carcass. Depending on market targets, larger more positive values are generally more favourable.

For further information please contact the Red Angus Society or Herefords Australia.

SALE INFORMATION

ATTENTION BUYER

INSPECTIONS

Cattle will be on display at the property of Doodle Cooma Pastoral Company - 'Glandore 2941 Sturt Highway, Alfredtown NSW 2650 on the designated inspection days:

Thursday 11th April, 10am - 2pm.

&

Saturday 13th April, 10am - 2pm.

Alternate inspections can be arranged prior to the sale by appointment with agents or contacting Daryl Schipp - 0427 227 590

AGENTS AND BUYER'S SALE REBATES

A rebate of 2.5% will be paid to all agents who introduce their clients or attend the sale with or on behalf of their client and settle within the trading terms of the settling agent. To qualify for this rebate agents must introduce the client in writing to the vendor prior to the sale. A rebate of 1% will be paid to all agents who settle within the trading terms of settling agent but do not introduce their client or attend the sale.

BULL GUARANTEE: Doodle Cooma Pastoral Company Pty Ltd guarantee structural soundness and fertility of all bulls. All bulls have been examined by veterinarians and are fertile and structurally sound to the best of our knowledge. If an animal becomes infertile or breaks down due to reason other than injury or misadventure at anytime in the first 24 months from purchase we will:

1. Provide you with a satisfactory replacement if available or
2. Issue you with a credit equal to the purchase price less the salvage value that may be used to purchase an animal from Doodle Cooma in the future.

Any claims are to be accompanied by a certificate from a registered vet.

All vet costs are the responsibility of the purchaser.

BULL REGISTRATION & TRANSFERS

All bulls (excluding Lot 24.) in the sale are HBR registered through their respective societies, Herefords Australia and Red Angus Australia unless stated otherwise.

The Settling Agent of the sale will conduct individual NLIS transfers to purchasers nominated PIC on registration form. Doodle Cooma Pastoral Co. will transfer eligible bulls to into purchasers name through Herefords Australia and Red Angus Australia societies. If possible please advise Herefords Australia and/or Red Angus Australia herd prefix/ Herd ID.

BIDDING / BUYER NUMBER SYSTEM

The bull sale is **online only** on bidding platform, Auctions Plus. Usual protocol to register for bidding is required through this channel.

CARTAGE / FREIGHT

Doodle Cooma Pastoral Co. Pty Ltd will offer free delivery of your bull within 100kms of Wagga.

Or, for 2 or more bulls we will offer free delivery to Dubbo.

Please confirm on sale day, if you have any transport needs.

SALE INFORMATION

ATTENTION BUYER

INSURANCE

Doodle Cooma Pastoral Co. recommends you take out insurance to cover your new purchase. At the completion of the timer on the online sale, the bull you have purchased becomes your responsibility. If they are injured in the yards or on the truck during delivery, it is no longer the responsibility of the vendor.

ANIMAL HEALTH

All bulls have received the following assessments/treatments:

- Ear notched or blood tested a Bovine Viral Diarrhea (BVD) negative
- Fully vaccinated with 7 in 1 and drenched to control any internal/external parasites
- Semen Tested
- DNA Tested - sire verified
- Doodle Cooma Pastoral Co. is recorded at JBAS 6. All cattle are free to travel to all areas of NSW, VIC, TAS, SA & QLD.
- VIBRIOVAX vaccinated
- Covered by Schipps "Fair Go" Guarantee

RECESSIVE GENETIC CONDITION

All lots are clearly marked with their genetic status.

GST

GST will be added to all of the sale lots

DISCLAIMER

▪ Doodle Cooma Pastoral Co., the selling agents, officers, agents and employees while exercising due care provide all information without responsibility and do not warrant its accuracy. They also accept no responsibility for accidents that occur on or about the venue during inspections. You attend the venue for bull inspections at your own risk.

▪ People entering upon this property for any purpose whatsoever, including attendance of cattle inspections, do so at their own risk. We are not liable to you for personal injury or death suffered by you and/or for the theft, loss of or damage to any personal property caused or contributed to by us or by any person whether caused or contributed to by our or their negligence, deliberate act or unlawful conduct. "We", "Us" or "Our" refer to the owners, their employees, contractors and agents and each of them. Every care has been taken in compiling this catalogue to ensure accuracy of information supplied, but no responsibility is accepted for any errors which may have occurred.

Animal details included in this catalogue, including but not limited to pedigree, DNA information, Estimated Breeding Values (EBVs) and Index values, are based on information provided by the breeder or owner of the animal. Whilst all reasonable care has been taken to ensure that the information provided in this catalogue was correct at the time of publication, we take no responsibility for the accuracy or completeness of the information, nor for the outcome (including consequential loss) of any action taken based on this information.



AuctionsPlus

How to Register and Bid on AuctionsPlus

1

Go to www.auctionsplus.com.au to register at least 48 hours before the sale.

2

Select "**Sign Up**" in the top right hand corner.

3

Fill out your name, mobile number, email address and create a password.

4

Go to your emails and confirm the account.

5

Return to AuctionsPlus and log in.

6

Select "**Dashboard**" and then select "**Request Approval to Buy**".

7

Fill in buyer details and once completed go back to Dashboard.

8

Complete buyer induction module (approx. 30 minutes).

9

AuctionsPlus will email you to let you know that your account has been approved.

10

Log in on sale day and connect to auction.

11

Bid using the two-step process – unlock the bid button and bid at that price.

12

If you are successful, the selling agent will contact you post sale to organise delivery and payment.

For more information please contact us on:

Phone: (02) 9262 4222

Email: info@auctionsplus.com.au

Lot 1 KANIMBLA QUANTUM S015 (AI) (PP)

Ident: MXMS015

Born: 13/03/2021

KCF BENNETT ENCORE Z311 (ET) (PP)
 NJW 79Z Z311 ENDURE 173D (IMP USA) (ET) (PP)
 BW 91H 100W RITA 79Z (ET) (P)
 Sire: KANIMBLA QUANTUM Q021 (AI) (PP)
 FTF PROSPECTOR 145Y (IMP USA) (P)
 KANIMBLA CENTREFOLD M022 (AI) (PP)
 KANIMBLA CENTREFOLD G58 (AI) (ET) (P)
 DAYS ROBIN HOOD H38 (AI) (ET) (PP)
 DAYS FLEETWOOD K185 (PP)
 DAYS DAWN H40 (TW) (P)
 Dam: KANIMBLA JENNY N027 (P)
 TYCOLAH FAIR N SQUARE (P)
 KANIMBLA JENNY H002 (AI) (P)
 KANIMBLA JENNY X24 (P)



A bull used in the stud. His calves come easily and are thick. He is easy doing and structurally correct. Lot 1 boasts good Growth, Milk and Fat figures - a true all-rounder.

February 2024 Hereford BREEDPLAN																
CE (DIR)	CE (DTRS)	GL	BW	200	400	600	MCW	Milk	SS	DC	Cwt	EMA	Rib	RUMP	RBY%	IMF%
+4.3	+5.9	+1.7	+4.3	+38	+67	+90	+75	+26	+2.5	-4.8	+58	+4.4	+1.2	+2.1	+0.2	+0.3
39%	31%	68%	67%	64%	64%	64%	58%	51%	62%	31%	51%	44%	49%	52%	43%	50%
\$ Index Values			Southern Self Replacing: +\$161				Northern Self Replacing: +\$143			Southern Baldy Maternal: +\$168			Northern Baldy Terminal: +\$120			

Traits Observed: GL,CE,BWT,200WT,400WT,600WT,SS,FAT,EMA,IMF,Genomics

Parent Verification: Sire: Verified, Dam: Not Tested

Purchaser: Price \$:

Lot 2 KANIMBLA REDEMPTION S117 (P)

Ident: MXMS117

Born: 30/08/2021

KCF BENNETT ENCORE Z311 (ET) (PP)
 NJW 79Z Z311 ENDURE 173D (IMP USA) (ET) (PP)
 BW 91H 100W RITA 79Z (ET) (P)
 Sire: KANIMBLA REDEMPTION Q079 (AI) (PP)
 MAWARRA MANITOBA J051 (AI) (ET) (PP)
 KANIMBLA MARINDA M129 (PP)
 KANIMBLA MARINDA E135 (P)
 MT RAVEN FEDEX E050 (P)
 KANIMBLA PENNANT G40 (P)
 MT RAVEN CHERRY RIPE B061 (AI) (P)
 Dam: KANIMBLA LASS L011 (P)
 KANIMBLA RENEGADE F117 (P)
 KANIMBLA LASS J016 (TW) (P)
 KANIMBLA LASS F028 (ET) (P)



An easy doing heifer bull. Used on commercial heifers and will improve milk. As with all bulls he is Sire Verified - You know Lot 2 will deliver.

February 2024 Hereford BREEDPLAN																
CE (DIR)	CE (DTRS)	GL	BW	200	400	600	MCW	Milk	SS	DC	Cwt	EMA	Rib	RUMP	RBY%	IMF%
+4.3	+3.8	+3.3	+3.5	+31	+53	+70	+51	+19	+1.9	-2.1	+44	+4.7	+0.6	+0.4	+0.9	+0.6
39%	30%	60%	70%	64%	64%	63%	57%	52%	71%	30%	50%	45%	49%	54%	47%	49%
\$ Index Values			Southern Self Replacing: +\$131				Northern Self Replacing: +\$116			Southern Baldy Maternal: +\$141			Northern Baldy Terminal: +\$102			

Traits Observed: CE,BWT,400WT(x2),SS,FAT,EMA,IMF,Genomics

Parent Verification: Sire: Verified, Dam: Not Tested

Purchaser: Price \$:

Lot 3 DOODLE COOMA TRIUMPH 005 (P)

Ident: DCPT005

Born: 01/04/2022

KCF BENNETT ENCORE Z311 (ET) (PP)
 NJW 79Z Z311 ENDURE 173D (IMP USA) (ET) (PP)
 BW 91H 100W RITA 79Z (ET) (P)
 Sire: KANIMBLA POWER QUEST Q006 (AI) (PP)
 KANIMBLA POWER PLAY J066 (AI) (P)
 KANIMBLA CHILLIE WOMAN M009 (P)
 KANIMBLA HOT CHILLI WOMAN G95 (P)
 ALLENDALE JI FREEWAY K28 (AI) (PP)
 ALLENDALE HEIDELBERG M061 (PP)
 ALLENDALE MARLINE K45 (AI) (P)
 Dam: KANIMBLA MASCOT R017 (P)
 TH 22R 16S LAMBEAU 17Y (IMP USA) (P)
 KANIMBLA MASCOT M067 (AI) (P)
 KANIMBLA MASCOT K126 (P)



A stylish Power Quest son, low birthweight good fats, doing ability and above average IMF. Lots of length and smooth coated - A solid addition!

February 2024 Hereford BREEDPLAN																
CE (DIR)	CE (DTRS)	GL	BW	200	400	600	MCW	Milk	SS	DC	Cwt	EMA	Rib	RUMP	RBY%	IMF%
+1.5	+5.4	+1.3	+3.4	+33	+56	+77	+53	+17	+1.0	-4.1	+50	+4.2	+2.1	+2.5	-0.3	+0.8
44%	31%	65%	70%	68%	67%	68%	59%	48%	66%	32%	55%	47%	51%	55%	45%	53%
\$ Index Values			Southern Self Replacing: +\$150				Northern Self Replacing: +\$136			Southern Baldy Maternal: +\$147			Northern Baldy Terminal: +\$96			

Traits Observed: 600WT,SS,FAT,EMA,IMF,Genomics

Parent Verification: Sire: Verified, Dam: Not Tested

Purchaser: Price \$:

Lot 4 DOODLE COOMA TRIFECTA 08 (AI) (PP)

Ident: DCPT008

Born: 02/04/2022

HARVIE HIGH ROLLER ET 66X (IMP CAN) (AI) (ET) (P)
 OAK DOWNS LAWLOIT L75 (AI) (PP)
 OAK DOWNS RUBY F165 (P)
 Sire: MAWARRA SHOWTIME P277 (PP)
 CLOVERLEE HUNTER (PP)
 MAWARRA MISS TITANIA 054 (AI) (ET) (P)
 MAWARRA MISS TITANIA 023 (AI) (P)

 NJW 73S M326 TRUST 100W ET (IMP USA) (ET) (P)
 VALMA LANDSLIDE (AI) (S)
 VALMA NATIONALS MOONSHINE A1 (AI) (P)
 Dam: KANIMBLA CENTREFOLD Q008 (AI) (P)
 KANIMBLA PENNANT G40 (P)
 KANIMBLA CENTREFOLD J051 (TW) (P)
 KANIMBLA CENTREFOLD G58 (AI) (ET) (P)



Potential Stud
 Sire - Low birthweight, exceptional milk, fats, eye muscle and IMF. This bull has the X factor, promising to be a cornerstone bull in any herd.

February 2024 Hereford BREEDPLAN																
CE (DIR)	CE (DTRS)	GL	BW	200	400	600	MCW	Milk	SS	DC	Cwt	EMA	Rib	RUMP	RBY%	IMF%
+4.1	+2.0	-0.9	+3.5	+33	+56	+83	+68	+26	+2.1	-2.6	+64	+7.0	+2.8	+4.4	+0.1	+1.6
40%	29%	67%	70%	68%	67%	69%	61%	49%	75%	31%	57%	49%	52%	57%	50%	52%
\$ Index Values			Southern Self Replacing: +\$148				Northern Self Replacing: +\$139			Southern Baldy Maternal: +\$161			Northern Baldy Terminal: +\$124			

Traits Observed: 200WT,600WT,SS,FAT,EMA,IMF,Genomics

Parent Verification: Sire: Verified, Dam: Not Tested

Purchaser: Price \$:

Lot 5 DOODLE COOMA TORWOOD (AI) (PP)

Ident: DCPT009

Born: 05/04/2022

SHF WONDER M326 W18 ET (P)
 REMITALL-WEST GAME DAY ET 74Y (IMP CAN) (P)
 REMITALL MARVEL 78T (IMP CAN) (P)
 Sire: DOODLE COOMA PRIME TIME (AI) (PP)
 BOWEN HAWLEY H54 (AI) (P)
 DOODLE COOMA BEAUTY QUEEN 30 (TW) (P)
 DOODLE COOMA BEAUTY QUEEN 26 (P)

 BOWEN DIAMANTINA D203 (AI) (PP)
 BOWEN HELGA H120 (P)
 PEAKES FANCY B136 (AI) (ET) (P)
 Dam: DOODLE COOMA NORA 16 (P)
 DOODLE COOMA G-MAIL (P)
 DOODLE COOMA NORA 8 (P)
 DOODLE COOMA NORA 5 (P)



A big powerful bull with superior bone and substance, with big panda eyes. By our homebred sire Prime Time who is working in the Courallie J stud.

February 2024 Hereford BREEDPLAN																
CE (DIR)	CE (DTRS)	GL	BW	200	400	600	MCW	Milk	SS	DC	Cwt	EMA	Rib	RUMP	RBY%	IMF%
-1.2	+0.8	-1.6	+4.8	+39	+63	+93	+77	+20	+2.6	-4.1	+60	+3.8	+1.2	+1.6	+0.8	+0.4
32%	26%	70%	62%	63%	62%	65%	56%	48%	74%	29%	53%	44%	48%	52%	46%	49%
\$ Index Values			Southern Self Replacing: +\$152				Northern Self Replacing: +\$135			Southern Baldy Maternal: +\$145			Northern Baldy Terminal: +\$101			

Traits Observed: GL,200WT,600WT,SS,FAT,EMA,IMF,Genomics

Parent Verification: Sire: Verified, Dam: Not Tested

Purchaser: Price \$:

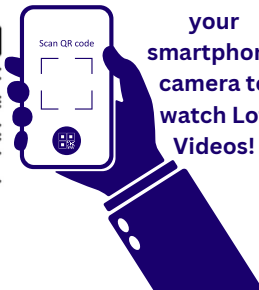
Lot 6 DOODLE COOMA TOORAK (AI) (PP)

Ident: DCPT012

Born: 07/04/2022

SHF WONDER M326 W18 ET (P)
 REMITALL-WEST GAME DAY ET 74Y (IMP CAN) (P)
 REMITALL MARVEL 78T (IMP CAN) (P)
 Sire: DOODLE COOMA PRIME TIME (AI) (PP)
 BOWEN HAWLEY H54 (AI) (P)
 DOODLE COOMA BEAUTY QUEEN 30 (TW) (P)
 DOODLE COOMA BEAUTY QUEEN 26 (P)

 BOWEN EMPIRE E122 (AI) (ET) (P)
 BOWEN HAWLEY H54 (AI) (P)
 BOWEN RUTH E321 (AI) (P)
 Dam: DOODLE COOMA MINERVA 34 (P)
 OAK DOWNS OPTIMISM (P)
 DOODLE COOMA MINERVA 8 (P)
 LJS 75A MINERVA T215 (AI) (P)



Scan the QR Code with your smartphone camera to watch Lot Videos!

Excellent Length and a double cross of the exceptional breeding bull Bowen Hawley - A pedigree rooted in performance and temperament.

February 2024 Hereford BREEDPLAN																
CE (DIR)	CE (DTRS)	GL	BW	200	400	600	MCW	Milk	SS	DC	Cwt	EMA	Rib	RUMP	RBY%	IMF%
-1.5	+2.6	-1.3	+5.7	+34	+58	+78	+90	+17	+2.6	-2.1	+40	+2.5	-0.1	-0.2	+1.1	-0.3
34%	29%	72%	64%	65%	65%	68%	59%	52%	75%	31%	56%	47%	52%	56%	50%	52%
\$ Index Values			Southern Self Replacing: +\$94				Northern Self Replacing: +\$79			Southern Baldy Maternal: +\$97			Northern Baldy Terminal: +\$76			

Traits Observed: GL,200WT,600WT,SS,FAT,EMA,IMF,Genomics

Parent Verification: Sire: Verified, Dam: Not Tested

Purchaser: Price \$:

Lot 7 DOODLE COOMA TULLIMBAR (AI) (PP)

Ident: DCPT014

Born: 08/04/2022

KOANUI UNANIMOUS 7174 (P)
 KOANUI UNANIMOUS 0408 (P)
 KOANUI GIRLIE 3048 (P)
 Sire: KOANUI TECHNO 3062 (IMP NZL) (PP)
 LEELANDS X-TENSION 293 (P)
 KOANUI BLUSH 6455 (P)
 KOANUI BLUSH 3304 (P)

ALLENDALE ROBIN HOOD D194 (PP)
 KANIMBLA ROBIN HOOD M034 (PP)
 BAHLOO E51 MARITANA J68 (P)
 Dam: KANIMBLA LADY JESSIE P093 (P)
 MT RAVEN FEDEX E050 (P)
 KANIMBLA LADY JESSIE G044 (P)
 KANIMBLA LADY JESSIE E004 (P)

WITHDRAWN

February 2024 Hereford BREEDPLAN																
CE (DIR)	CE (DTRS)	GL	BW	200	400	600	MCW	Milk	SS	DC	Cwt	EMA	Rib	RUMP	RBY%	IMF%
-0.1	+1.1	+2.1	+7.0	+42	+81	+113	+125	+14	+2.8	-3.6	+72	+4.6	+1.3	+1.9	+0.6	+1.1
52%	47%	73%	70%	69%	68%	69%	65%	61%	75%	47%	61%	56%	59%	61%	56%	60%
\$ Index Values			Southern Self Replacing: +\$166				Northern Self Replacing: +\$153			Southern Baldy Maternal: +\$166			Northern Baldy Terminal: +\$130			

Traits Observed: GL,200WT,600WT,SS,FAT,EMA,IMF,Genomics

Parent Verification: Sire: Verified, Dam: Not Tested

Purchaser: Price \$:

Lot 8 DOODLE COOMA TENNYSON 018 (AI) (PP)

Ident: DCPT018

Born: 14/04/2022

ALLENDALE ANZAC E114 (PP)
 WIRRUNA NIXON N168 (AI) (TW) (PP)
 WIRRUNA DIDO H45 (AI) (PP)
 Sire: DOODLE COOMA RANGER R006 (AI) (P)
 BOWEN HELGA H120 (P)
 DOODLE COOMA MARVEL 372 (P)
 DOODLE COOMA MARVEL 343 (AI) (S)
 BOWEN DIAMANTINA D203 (AI) (PP)
 BOWEN HELGA H120 (P)
 PEAKES FANCY B136 (AI) (ET) (P)
 Dam: DOODLE COOMA INNOVATION 292 (P)
 RUSSLYNN FLARE (PP)
 DOODLE COOMA INNOVATION 268 (AI) (P)
 DOODLE COOMA INNOVATION 250 (P)



Quality hair and skin on a long body. By successful homebred sire- Ranger. Very sound structure, a versatile sire for any program.

February 2024 Hereford BREEDPLAN																
CE (DIR)	CE (DTRS)	GL	BW	200	400	600	MCW	Milk	SS	DC	Cwt	EMA	Rib	RUMP	RBY%	IMF%
-2.8	-3.0	+0.8	+3.3	+33	+59	+75	+64	+15	+3.5	-4.0	+54	+4.2	+0.3	+0.5	+1.6	-0.5
31%	26%	70%	63%	63%	62%	66%	56%	49%	74%	31%	53%	45%	49%	53%	46%	50%
\$ Index Values			Southern Self Replacing: +\$119				Northern Self Replacing: +\$111			Southern Baldy Maternal: +\$106			Northern Baldy Terminal: +\$75			

Traits Observed: GL,200WT,600WT,SS,FAT,EMA,IMF,Genomics

Parent Verification: Sire: Verified, Dam: Not Verified

Purchaser: Price \$:

Lot 9 DOODLE COOMA TERRIFIC 041 (P)

Ident: DCPT041

Born: 04/06/2022

ALLENDALE ANZAC E114 (PP)
 WIRRUNA NIXON N168 (AI) (TW) (PP)
 WIRRUNA DIDO H45 (AI) (PP)
 Sire: DOODLE COOMA RANGER R006 (AI) (P)
 BOWEN HELGA H120 (P)
 DOODLE COOMA MARVEL 372 (P)
 DOODLE COOMA MARVEL 343 (AI) (S)
 BOWEN HAWLEY H54 (AI) (P)
 DOODLE COOMA LOADED UP (PP)
 DOODLE COOMA MOLLY 114 J07 (AI) (P)
 Dam: DOODLE COOMA MINERVA 38 (P)
 BENELL TRIUMPH (AI) (P)
 DOODLE COOMA MINERVA 27 (P)
 DOODLE COOMA MINERVA 16 (P)



A strong, powerful bull again by Ranger, embodies extra frame with good skin and tight sheath. Highlights Hereford breeding excellence with impeccable conformation.

February 2024 Hereford BREEDPLAN																
CE (DIR)	CE (DTRS)	GL	BW	200	400	600	MCW	Milk	SS	DC	Cwt	EMA	Rib	RUMP	RBY%	IMF%
-2.5		-0.8	+7.2	+41	+66	+88	+82	+10	+2.4	-1.0	+52	+4.2	-0.4	-0.7	+1.7	-0.1
27%		55%	61%	61%	61%	62%	53%	47%	66%	30%	49%	41%	47%	51%	43%	48%
\$ Index Values			Southern Self Replacing: +\$124				Northern Self Replacing: +\$110			Southern Baldy Maternal: +\$120			Northern Baldy Terminal: +\$87			

Traits Observed: CE,200WT,600WT,SS,FAT,EMA,IMF,Genomics

Parent Verification: Sire: Verified, Dam: Not Tested

Purchaser: Price \$:

Lot 10 DOODLE COOMA TURBO 058 (PP)

Ident: DCPT058

Born: 28/08/2022

KOANUI UNANIMOUS 0408 (P)
 KOANUI TECHNO 3062 (IMP NZL) (PP)
 KOANUI BLUSH 6455 (P)
 Sire: WEETALIBA PIVOT P3 (AI) (PP)
 DAYS CALIBRE G74 (PP)
 WEETALIBA MARINDA L14 (AI) (P)
 WEETALIBA MARINDA G12 (P)
 HARVIE TRAVELER 69T (IMP CAN) (P)
 WLB SAMSONITE 69T 84W (IMP CAN) (P)
 WLB 7M FRAN 82S (P)
 Dam: MANBULLOO GHOST MAPLE J06 (AI) (P)
 SOUTH BUKALONG SHANNON 40 (PP)
 PINE HILL GHOST MAPLE F28 (P)
 PINE HILL GHOST MAPLE A641 (AI) (P)



Out of a super female! Check out his growth, eye muscle, fats and marbling figures. Add to this, the soundness from Pivot and you have a great package not to be missed.

February 2024 Hereford BREEDPLAN																
CE (DIR)	CE (DTRS)	GL	BW	200	400	600	MCW	Milk	SS	DC	Cwt	EMA	Rib	RUMP	RBV%	IMF%
+0.8	+3.8	+1.1	+5.1	+40	+75	+100	+93	+11	+3.9	-5.3	+71	+6.0	+1.6	+2.2	+0.6	+2.0
38%	33%	62%	65%	64%	64%	65%	56%	51%	74%	36%	53%	48%	50%	54%	47%	52%
\$ Index Values			Southern Self Replacing: +\$191				Northern Self Replacing: +\$184			Southern Baldy Maternal: +\$182			Northern Baldy Terminal: +\$132			

Traits Observed: CE,200WT,400WT,SS,FAT,EMA,IMF,Genomics

Parent Verification: Sire: Verified, Dam: Not Tested

Purchaser: Price \$:

Lot 11 DOODLE COOMA TAUTON 056 (PP)

Ident: DCPT056

Born: 28/08/2022

KOANUI UNANIMOUS 0408 (P)
 KOANUI TECHNO 3062 (IMP NZL) (PP)
 KOANUI BLUSH 6455 (P)
 Sire: WEETALIBA PIVOT P3 (AI) (PP)
 DAYS CALIBRE G74 (PP)
 WEETALIBA MARINDA L14 (AI) (P)
 WEETALIBA MARINDA G12 (P)
 ALLENDALE VAGABOND A74 (AI) (P)
 YARAWA SOUTH MINSTREL M115 (AI) (PP)
 YARAWA SOUTH FAVOURITE J119 (P)
 Dam: DOODLE COOMA MINERVA 47 (P)
 BRAYBOOK DYNAMO D309 (P)
 DOODLE COOMA MINERVA 16 (P)
 DOODLE COOMA MINERVA 8 (P)



Sire of Lot 11, Pivot, has injected growth, milk, marbling and sound structure into our herd. Tauton has a good eye, tight sheath and dark fine hair.

February 2024 Hereford BREEDPLAN																
CE (DIR)	CE (DTRS)	GL	BW	200	400	600	MCW	Milk	SS	DC	Cwt	EMA	Rib	RUMP	RBV%	IMF%
+0.0	+2.1	-0.4	+5.5	+39	+65	+97	+96	+18	+3.2	-2.8	+59	+2.6	+1.0	+1.5	-0.3	+1.5
34%	30%	57%	63%	63%	63%	63%	55%	49%	73%	34%	51%	46%	50%	54%	47%	51%
\$ Index Values			Southern Self Replacing: +\$141				Northern Self Replacing: +\$122			Southern Baldy Maternal: +\$144			Northern Baldy Terminal: +\$109			

Traits Observed: CE,200WT,400WT,SS,FAT,EMA,IMF,Genomics

Parent Verification: Sire: Verified, Dam: Not Verified

Purchaser: Price \$:

Lot 12 DOODLE COOMA TELOPEA 060 (PP)

Ident: DCPT060

Born: 29/08/2022

WIRRUNA FLETCHER F214 (P)
 WIRRUNA LANCE L74 (AI) (PP)
 WIRRUNA GOLDEN VANITY H60 (AI) (P)
 Sire: DOODLE COOMA RICHMOND 3 (AI) (PP)
 DOODLE COOMA CASEY (P)
 DOODLE COOMA MAY 10 (P)
 DOODLE COOMA MAY 6 (P)
 ALLENDALE ANZAC E114 (PP)
 WIRRUNA NIXON N168 (AI) (TW) (PP)
 WIRRUNA DIDO H45 (AI) (PP)
 Dam: DOODLE COOMA MINERVA 49 (AI) (PP)
 DOODLE COOMA LOADED UP (PP)
 DOODLE COOMA MINERVA 38 (P)
 DOODLE COOMA MINERVA 27 (P)



An earlier maturing bull with a pedigree stacked full of productive animals. Thick, easy-doing, great muscle expression with plenty of pigment and the marbling gene.

February 2024 Hereford BREEDPLAN																
CE (DIR)	CE (DTRS)	GL	BW	200	400	600	MCW	Milk	SS	DC	Cwt	EMA	Rib	RUMP	RBV%	IMF%
-1.4	+3.5	-1.0	+2.3	+31	+51	+65	+42	+16	+2.8	-3.7	+47	+4.7	+1.4	+1.5	+0.5	+1.2
31%	26%	59%	63%	62%	61%	62%	54%	48%	73%	32%	49%	44%	48%	52%	45%	49%
\$ Index Values			Southern Self Replacing: +\$131				Northern Self Replacing: +\$123			Southern Baldy Maternal: +\$120			Northern Baldy Terminal: +\$80			

Traits Observed: CE,200WT,400WT,SS,FAT,EMA,IMF,Genomics

Parent Verification: Sire: Verified, Dam: Verified

Purchaser: Price \$:

Lot 13 DOODLE COOMA TOPAZ 061 (PP)

Ident: DCPT061

Born: 29/08/2022

KOANUI UNANIMOUS 0408 (P)
 KOANUI TECHNO 3062 (IMP NZL) (PP)
 KOANUI BLUSH 6455 (P)
 Sire: WEETALIBA PIVOT P3 (AI) (PP)
 DAYS CALIBRE G74 (PP)
 WEETALIBA MARINDA L14 (AI) (P)
 WEETALIBA MARINDA G12 (P)
 SOUTH BUKALONG WALLACE 2 (P)
 GLENTREVOR WALLACE H427 (AI) (PP)
 GLENTREVOR MARITANA F240 (P)
 Dam: DOODLE COOMA MAY 42 (P)
 BOWEN HELGA H120 (P)
 DOODLE COOMA MAY 26 (P)
 DOODLE COOMA MAY 7 (P)



Quality hair and skin type, with good bone, calving ease built in, suitable for heifers. Potential to elevate any breeding program to new heights.

February 2024 Hereford BREEDPLAN																
CE (DIR)	CE (DTRS)	GL	BW	200	400	600	MCW	Milk	SS	DC	Cwt	EMA	Rib	RUMP	RBY%	IMF%
+6.3	+5.3	+0.5	+3.0	+32	+57	+75	+69	+11	+4.4	-5.6	+50	+3.4	+1.2	+2.0	+0.1	+0.9
38%	33%	59%	64%	64%	64%	65%	57%	51%	73%	36%	53%	48%	51%	54%	48%	53%
\$ Index Values			Southern Self Replacing: +\$157				Northern Self Replacing: +\$153			Southern Baldy Maternal: +\$161			Northern Baldy Terminal: +\$117			

Traits Observed: CE,200WT,400WT,SS,FAT,EMA,IMF,Genomics Parent Verification: Sire: Verified, Dam: Not Tested

Purchaser: Price \$:

Lot 14 DOODLE COOMA TALENT 069 (AI) (PP)

Ident: DCPT069

Born: 01/09/2022

SHF WONDER M326 W18 ET (P)
 REMITALL-WEST GAME DAY ET 74Y (IMP CAN) (P)
 REMITALL MARVEL 78T (IMP CAN) (P)
 Sire: DOODLE COOMA PRIME TIME (AI) (PP)
 BOWEN HAWLEY H54 (AI) (P)
 DOODLE COOMA BEAUTY QUEEN 30 (TW) (P)
 DOODLE COOMA BEAUTY QUEEN 26 (P)
 ARDO HUSTLER 4110 (IMP NZL) (P)
 ELITE 4110 H297 (AI) (PP)
 ELITE FAVOURITE 0219 C133 (AI) (P)
 Dam: KANIMBLA ACACIA P060 (AI) (P)
 GLENDAN PARK CLASS ACT C136 (AI) (P)
 MT RAVEN ACACIA F078 (S)
 MT RAVEN ACACIA C008 (P)



A long, smooth skinned bull with a bit of extra lift, good eye and head. Extra growth indicated by high 600 day EBV and above average eye muscle.

February 2024 Hereford BREEDPLAN																
CE (DIR)	CE (DTRS)	GL	BW	200	400	600	MCW	Milk	SS	DC	Cwt	EMA	Rib	RUMP	RBY%	IMF%
-4.8	+3.6	-2.3	+6.0	+43	+78	+113	+112	+20	+3.4	-3.1	+71	+5.2	-0.2	-0.7	+2.2	-0.1
37%	30%	71%	66%	65%	64%	65%	57%	51%	74%	33%	52%	46%	50%	54%	48%	52%
\$ Index Values			Southern Self Replacing: +\$159				Northern Self Replacing: +\$138			Southern Baldy Maternal: +\$150			Northern Baldy Terminal: +\$106			

Traits Observed: GL,200WT,400WT,SS,FAT,EMA,IMF,Genomics Parent Verification: Sire: Verified, Dam: Not Verified

Purchaser: Price \$:

Lot 15 DOODLE COOMA TEMORA 077 (AI) (P)

Ident: DCPT077

Born: 02/09/2022

SHF WONDER M326 W18 ET (P)
 REMITALL-WEST GAME DAY ET 74Y (IMP CAN) (P)
 REMITALL MARVEL 78T (IMP CAN) (P)
 Sire: DOODLE COOMA PRIME TIME (AI) (PP)
 BOWEN HAWLEY H54 (AI) (P)
 DOODLE COOMA BEAUTY QUEEN 30 (TW) (P)
 DOODLE COOMA BEAUTY QUEEN 26 (P)
 MT RAVEN FEDEX E050 (P)
 KANIMBLA PENNANT G40 (P)
 MT RAVEN CHERRY RIPE B061 (AI) (P)
 Dam: KANIMBLA LASS L011 (P)
 KANIMBLA RENEGADE F117 (P)
 KANIMBLA LASS J016 (TW) (P)
 KANIMBLA LASS F028 (ET) (P)



Another bull suitable for heifers with a low birthweight EBV. Lot 15 offers the desired package of Early maturity, good skin, hair type and tight sheath. (scurred).

February 2024 Hereford BREEDPLAN																
CE (DIR)	CE (DTRS)	GL	BW	200	400	600	MCW	Milk	SS	DC	Cwt	EMA	Rib	RUMP	RBY%	IMF%
-2.4	+2.1	-1.0	+2.2	+26	+41	+61	+35	+24	+2.6	-3.7	+40	+4.7	+2.0	+2.7	+0.3	+1.2
35%	28%	70%	65%	64%	63%	64%	57%	52%	74%	30%	51%	45%	50%	54%	47%	50%
\$ Index Values			Southern Self Replacing: +\$115				Northern Self Replacing: +\$103			Southern Baldy Maternal: +\$105			Northern Baldy Terminal: +\$70			

Traits Observed: GL,200WT,400WT,SS,FAT,EMA,IMF,Genomics Parent Verification: Sire: Verified, Dam: Not Tested

Purchaser: Price \$:

Lot 16 DOODLE COOMA TOP GUN 085 (AI) (PP)

Ident: DCPT085

Born: 03/09/2022

WIRRUNA FLETCHER F214 (P)
 WIRRUNA LANCE L74 (AI) (PP)
 WIRRUNA GOLDEN VANITY H60 (AI) (P)
 Sire: DOODLE COOMA ROYAL RESERVE (AI) (PP)
 WLB SAMSONITE 69T 84W (IMP CAN) (P)
 MANBULLOO GHOST MAPLE J06 (AI) (P)
 PINE HILL GHOST MAPLE F28 (P)
 DAYS CARBINE J141 (PP)
 KANIMBLA REGULATOR M025 (AI) (PP)
 KANIMBLA MISS HEREFORD J025 (AI) (P)
 Dam: KANIMBLA CENTREFOLD P100 (P)
 ALLENDALE ROBIN HOOD D194 (PP)
 KANIMBLA CENTREFOLD M002 (AI) (P)
 KANIMBLA CENTREFOLD J051 (TW) (P)



A bull who is forging a head- great length, thick topped and a real sires outlook. His sire Royal Reserve is working in a top commercial herd in the mountains.

February 2024 Hereford BREEDPLAN																
CE (DIR)	CE (DTRS)	GL	BW	200	400	600	MCW	Milk	SS	DC	Cwt	EMA	Rib	RUMP	RBV%	IMF%
+0.6	+4.2	-0.9	+6.3	+43	+62	+84	+62	+19	+1.4	-2.3	+57	+6.3	+0.4	+0.4	+1.6	+1.0
34%	27%	69%	64%	62%	62%	56%	56%	49%	73%	31%	49%	44%	48%	52%	46%	49%
\$ Index Values				Southern Self Replacing: +\$153			Northern Self Replacing: +\$140			Southern Baldy Maternal: +\$153			Northern Baldy Terminal: +\$108			

Traits Observed: GL,200WT,400WT,SS,FAT,EMA,IMF,Genomics

Parent Verification: Sire: Verified, Dam: Not Tested

Purchaser: Price \$:

7AR89 HXC GRINDSTONE 9908G



SCHIPPS BEEF SALE PROUDLY OFFERS THE FIRST GRINDSTONE BULLS AVAILABLE IN AUSTRALIA

From Hueftle Cattle Co., NE

Registration: 4187454

Tattoo: 9908G

Born: 2/4/19

Birth Weight: 76 lbs | ratio 100

Weaning Weight: 655 lbs | ratio 115

Yearling Weight: 1341 lbs | ratio 115

Yr Fr Score: 6.2

LEACHMAN PLEDGE A282Z

HXC ALLEGIANCE 5502C

HXC 100Y

- ▶ Phenotype, performance, and carcass merit in one complete package.
- ▶ GRINDSTONE is a power bull loaded with muscle, depth of rib, and length of body in a 6.2 frame score.
- ▶ Excels for multiple carcass traits including REA, Marbling, Carcass Weight and GridMaster.
- ▶ His dam 605D is a rising star in the Hueftle herd with a 107 MPPA and excellent udder quality and feet.
- ▶ This sire posted individual growth ratios of 115 for WW, 115 for YW and 115 for ADG.

RED ANGUS

	ProS	HB	GM	CE	BW	WW	YW	ADG	DMI	MM	ME	HPG	CEM	Stay	Marb	YG	CW	REA	BF
EPD	103	36	67	8	0.8	78	13	0.34	2.39	30	8	12	4	14	0.57	-0.0	46	0.6	0.0
Acc							3	81	32	26	28	26	35	38	54	2	54	5	1
% Rank	30	72	11	92	87	10	81	6	97	17	69	43	90	64	25	38	6	45	36
							7								15			4	38

Featuring

17 SCHIPPS RED TALLANGATTA (AMF) (MAF) (NHF) (OSF) DC T14



Born: 06/02/2022 **Tattoo:** DC T14
 --RED WPRA LEGACY A-314 (AMF) (MAF) (NHF) (OSF)
Sire: SCHIPPS QUEBEC (AI) (MAF) (NHF) (OSF) DC Q32
 --SCHIPPS RED WING H10
 --HICKS ADA G84 (TWIN)
Dam: SCHIPPS RED VALE K48 DC K48
 --SCHIPPS RED VALE F20



An upstanding bull showing the muscle and fleshing found in all the DC Q32 calves. Athletic, quiet and ready to work - an impressive combination of phenotype and genetic merit.

March 2024 Red Angus BREEDPLAN										
	BW	200W	400W	600W	Milk	EMA	RIB	CWT%	IMF%	
	+4.4	+34	+47	+68	+14	-0.3	-1.0	+36	+0.2	
	53%	64%	61%	64%	42%	46%	54%	55%	45%	
\$ Index	Sustainable Breeder		+\$22		Supermarket		+\$11		Northern Steer	+\$31
Breed Ave										+\$39

Purchaser..... \$.....

18 SCHIPPS RED TAMBO (AMF) (MAF) (NHF) (OSF) DC T15



Born: 06/02/2022 **Tattoo:** DC T15
 --RED WPRA LEGACY A-314 (AMF) (MAF) (NHF) (OSF)
Sire: SCHIPPS QUEBEC (AI) (MAF) (NHF) (OSF) DC Q32
 --SCHIPPS RED WING H10
 --SCHIPPS RED GRAND DESIGN
Dam: SCHIPPS RED CRYSTAL K10 DC K10
 --SCHIPPS RED CRYSTAL C018



A top sire prospect that could do stud duty. Lots of fleshing and muscle with a deep rich coat and a sound structure. Lot 18 represents a commitment to excellence for years to come.

March 2024 Red Angus BREEDPLAN										
	BW	200W	400W	600W	Milk	EMA	RIB	CWT%	IMF%	
	+3.5	+27	+39	+56	+6	+1.4	+0.5	+32	+0.2	
	53%	63%	61%	63%	41%	44%	53%	54%	43%	
\$ Index	Sustainable Breeder		+\$25		Supermarket		+\$21		Northern Steer	+\$38
Breed Ave										+\$39

Purchaser..... \$.....

19 SCHIPPS RED TROY T49 (AMF) (MAF) (NHF) (OSF) DC T49



Born: 19/05/2022 **Tattoo:** DC T49
 --C-T GRAND STATEMENT 1025 (AMF) (MAF) (NHF) (OSF)
Sire: YALLAMBEE GRAND STATEMENT Q40 (AI) (AMF) (MAF) (NHF) (OSF) YRAQ40
 --YALLAMBEE GIA N19
 --PARINGA RED EXPECTATION F168(AI)(ET) (NHC)
Dam: SCHIPPS RED WING J57 (NHF) DC J57
 --SCHIPPS RED WING G58



The first of our Grand Statement bulls. A heap of muscle and thickness on sound feet and legs. Check out his EBVs - a great performance bull bringing together the best of our Red Angus genetics.

March 2024 Red Angus BREEDPLAN										
	BW	200W	400W	600W	Milk	EMA	RIB	CWT%	IMF%	
	+4.9	+40	+65	+80	+10	+2.2	-0.1	+53	+0.7	
	53%	62%	59%	61%	36%	41%	50%	52%	40%	
\$ Index	Sustainable Breeder		+\$58		Supermarket		+\$61		Northern Steer	+\$82
Breed Ave										+\$39

Purchaser..... \$.....

20 SCHIPPS RED TERRITORY T52 (AMF) (MAF) (NHF) (OSF) DC T52



Born: 20/05/2022 Tattoo: DC T52

Scan the QR code to View Red Angus Videos!

Sire: YALLAMBEE GRAND STATEMENT Q40 (AI) (AMF) (MAF) (NHF) (OSF) YRAQ40
 --C-T GRAND STATEMENT 1025 (AMF) (MAF) (NHF) (OSF)
 --YALLAMBEE GIA N19
 --MILLWILLAH MARBLE BAR J53 (AMF) (MAF) (NHF) (OSF)
 Dam: SCHIPPS RED DOVE Q26 (AI) DC Q26
 --SCHIPPS RED DOVE K15



A performance bull with Grand Statement/ Milwillah Marble Bar cross. A really sound bull with muscle and thickness - a prime example of the Red Angus breed's adaptability and versatility.

March 2024 Red Angus BREEDPLAN									
	BW	200W	400W	600W	Milk	EMA	RIB	CWT%	IMF%
	+3.3	+32	+52	+68	+12	+2.1	+1.0	+39	+0.4
	53%	61%	59%	60%	32%	41%	49%	51%	39%
\$ Index	Sustainable Breeder		+\$48	Supermarket		+\$57	Northern Steer		+\$73
Breed Ave			+\$35			+\$35			+\$39

Purchaser..... \$.....

21 SCHIPPS RED TILBA T55 (AMF) (MAF) (NHF) (OSF) DC T55



Born: 27/06/2022 Tattoo: DC T55

Sire: TE MANIA RED LABEL Z1023 (AI) (ET) (AMF) (MAF) (NHF) (OSF) ANGVTMZ1023
 --TE MANIA MITTAGONG V254 (BLACK)
 --SCHIPPS RED NEVADA N16 (AI) (AMF) (MAF) (NHF) (OSF)
 Dam: SCHIPPS RED DOVE R26 DC R26
 --SCHIPPS RED DOVE N26 (AI)



A Red Label son we have used to back up a heifer A.I program. Positive calving ease with very high marbling EBV. Nice Temperament.

March 2024 Red Angus BREEDPLAN									
	BW	200W	400W	600W	Milk	EMA	RIB	CWT%	IMF%
	+1.9	+25	+42	+54	+18	+1.9	+1.4	+35	+1.6
	60%	64%	68%	70%	51%	52%	61%	62%	54%
\$ Index	Sustainable Breeder		+\$48	Supermarket		+\$61	Northern Steer		+\$71
Breed Ave			+\$35			+\$35			+\$39

Purchaser..... \$.....

22 SCHIPPS RED THREDBO T56 (AMF) (MAF) (NHF) (OSF) DC T56



Born: 27/06/2022 Tattoo: DC T56

Sire: YALLAMBEE GRAND STATEMENT Q40 (AI) (AMF) (MAF) (NHF) (OSF) YRAQ40
 --YALLAMBEE GIA N19
 --RED TER-RON PARKER 34A (AMF) (MAF) (NHF) (OSF)
 Dam: SCHIPPS RED WING N23 (AI) DC N23
 --EBONY LODGE RED WING F7 (AI) (ET)



A Grand Statement over a Red Ter-ron Parker cow which doubles up on muscle and performance. A great addition to any program.

March 2024 Red Angus BREEDPLAN									
	BW	200W	400W	600W	Milk	EMA	RIB	CWT%	IMF%
	+4.5	+39	+61	+81	+13	+3.0	-0.6	+51	+0.0
	48%	47%	49%	48%	30%	31%	42%	42%	35%
\$ Index	Sustainable Breeder		+\$40	Supermarket		+\$42	Northern Steer		+\$71
Breed Ave			+\$35			+\$35			+\$39

Purchaser..... \$.....

23 SCHIPPS RED TOTEM T60 (AMF) (MAF) (NHF) (OSF) DC T60



Born: 28/06/2022 Tattoo: DC T60

--C-T GRAND STATEMENT 1025 (AMF) (MAF) (NHF) (OSF)
 Sire: YALLAMBEE GRAND STATEMENT Q40 (AI) (AMF) (MAF) (NHF) (OSF) YRAQ40
 --YALLAMBEE GIA N19
 --BOLTON GIRLS WHISPERS JACKPOT (AI) (ET) (AMF) (MAF) (NHF) (OSF)
 Dam: SCHIPPS RED FEATHER P37 DC P37
 --SCHIPPS RED FEATHER L19 (NHF)



Not to be overlooked - Another well bred Grand Statement bull showing typical performance and muscle offering a solid foundation for building a profitable Red Angus herd.

March 2024 Red Angus BREEDPLAN									
	BW	200W	400W	600W	Milk	EMA	RIB	CWT%	IMF%
	+3.9	+34	+58	+70	+12	+3.0	+0.0	+48	+0.2
	51%	56%	62%	63%	29%	43%	52%	53%	40%
\$ Index	Sustainable Breeder		+\$52	Supermarket		+\$66	Northern Steer		+\$74
Breed Ave			+\$35			+\$35			+\$39

Purchaser..... \$.....

24 Unregistered T065



Born: Tattoo: DC T65

--TE MANIA VICEROY V342
 Sire: TE MANIA RED LABEL Z1023 (AI) (ET) (AMF) (MAF) (NHF) (OSF) ANGVTMZ1023
 --TE MANIA MITTAGONG V254 (BLACK)
 Dam: SCHIPPS PUREBRED RED ANGUS



Unregistered but deserves his place in the sale as a Red Label with heaps of fleshing and sound structure, should be easy-calving for long-term herd success.

Purchaser..... \$.....

25 SCHIPPS RED TORONTO T71 (AI) (AMF) (MAF) (NHF) (OSF) DC T71



Born: 08/07/2022 Tattoo: DC T71

--HXC ALLEGIANCE 5502C (AMF) (MAF) (NHF) (OSF)
 Sire: HXC GRINDSTONE 9908G (AMF) (MAF) (NHF) (OSF) USAM4187454
 --HXC 605D
 --RED BENCHMARK TRANSITION 10'14 (AMF) (MAF) (NHF) (OSF)
 Dam: SCHIPPS RED WING N37 (AI) DC N37
 --SCHIPPS RED WING H03 (NHF)



The first of our Grindstone bulls. Superior fleshing, early maturing while maintaining balanced structure and nice temperament. A high indexing bull.

March 2024 Red Angus BREEDPLAN									
	BW	200W	400W	600W	Milk	EMA	RIB	CWT%	IMF%
	+2.1	+30	+50	+52	+12	+2.3	+0.0	+38	+0.7
	49%	55%	62%	63%	30%	40%	50%	52%	39%
\$ Index	Sustainable Breeder		+\$74	Supermarket		+\$87	Northern Steer		+\$66
Breed Ave			+\$35			+\$35			+\$39

Purchaser..... \$.....



26 SCHIPPS RED TALISMAN T74 (AI) (AMF) (MAF) (NHF) (OSF) DC T74

Born: 10/07/2022 **Tattoo:** DC T74
 --HXC ALLEGIANCE 5502C (AMF) (MAF) (NHF) (OSF)
Sire: HXC GRINDSTONE 9908G (AMF) (MAF) (NHF) (OSF) USAM4187454
 --HXC 605D
 --SCHIPPS RED LAVA
Dam: SCHIPPS RED CHRISTA N88 DC N88
 --SCHIPPS RED CHRISTA D014



Very Soft, easy fleshing, deep sided, thick bull by Grindstone. Should be easy calving - A lovely coat on this bull. A standout in the Red Angus lineup for his temperament and genetic potential.

March 2024 Red Angus BREEDPLAN										
	BW	200W	400W	600W	Milk	EMA	RIB	CWT%	IMF%	
	+2.7	+31	+53	+68	+11	+2.8	-0.5	+47	+0.3	
	48%	54%	62%	62%	29%	40%	49%	52%	37%	
\$ Index	Sustainable Breeder		+\$48		Supermarket		+\$62		Northern Steer	+\$73
Breed Ave			+\$35			+\$35			+\$39	

Purchaser..... \$.....

27 SCHIPPS RED TALBOT T79 (AMF) (MAF) (NHF) (OSF) DC T79



Born: 18/07/2022 **Tattoo:** DC T79
 --
Sire: BASE RED ANGUS (DNA ERROR) - UNVERIFIED - DNA PENDING
 --
 --PARINGA RED EXPECTATION F168(AI)(ET) (NHC)
Dam: SCHIPPS RED WING H05 (NHF) DC H05
 --SCHIPPS RED WING E40



WITHDRAWN

March 2024 Red Angus BREEDPLAN										
	BW	200W	400W	600W	Milk	EMA	RIB	CWT%	IMF%	
	+3.5	+37	+60	+72	+11	+1.7	-0.6	+46	+0.0	
	59%	60%	64%	65%	38%	42%	53%	53%	42%	
\$ Index	Sustainable Breeder		+\$44		Supermarket		+\$49		Northern Steer	+\$54
Breed Ave			+\$35			+\$35			+\$39	

Purchaser..... \$.....

28 SCHIPPS RED TULSA T80 (AMF) (MAF) (NHF) (OSF) DC T80



Born: 18/07/2022 **Tattoo:** DC T80
 --C-T GRAND STATEMENT 1025 (AMF) (MAF) (NHF) (OSF)
Sire: YALLAMBEE GRAND STATEMENT Q40 (AI) (AMF) (MAF) (NHF) (OSF) YRAQ40
 --YALLAMBEE GIA N19
 --HICKS ADA G84 (TWIN)
Dam: SCHIPPS RED WING M04 DC M04
 --SCHIPPS RED WING E29

Scan the QR code to View Red Angus Videos!



A quiet Grand Statement with extra length but still maintaining thickness and muscle - with a pedigree that's meticulously designed to produce cattle that thrive in both commercial and seedstock settings.

March 2024 Red Angus BREEDPLAN										
	BW	200W	400W	600W	Milk	EMA	RIB	CWT%	IMF%	
	+3.7	+34	+57	+71	+13	+1.7	+0.2	+46	-0.1	
	53%	57%	63%	63%	32%	43%	52%	54%	41%	
\$ Index	Sustainable Breeder		+\$40		Supermarket		+\$53		Northern Steer	+\$60
Breed Ave			+\$35			+\$35			+\$39	

Purchaser..... \$.....

SCHIPPS RED ANGUS AND DOODLE COOMA POLL HEREFORDS



THANK YOU

THANK YOU FOR SUPPORTING SCHIPPS RED ANGUS AND
75 YEARS OF DOODLE COOMA POLL HEREFORDS

Doodle Cooma Poll Herefords



WWW.DOODLECOOMAPASTCO.COM.AU