

ST. JOHN'S NATIONAL ACADEMY OF HEALTH SCIENCES



ST. JOHN'S MEDICAL COLLEGE AND ST. JOHN'S INSTITUTE OF ALLIED HEALTH SCIENCES BENGALURU - 560 034



PROSPECTUS

2021-2022

EMBLEM & FLAG



The **EMBLEM** of this Institution portrays a man lying with sickness being helped to rise, and given renewed life by Christ, who is signified by the Cross, on which He died, and which is a symbol of love.

The motto of the emblem, **HE SHALL LIVE BECAUSE OF ME**, links this Institution with the XXXVIII International Eucharistic Congress held in Bombay in December 1964, of which it is the Chief Memorial. The motto is a constant reminder to our Staff and Students of the presence of the Divine Healer (represented in the word "ME" of the motto) with whom they collaborate in their care of human lives.

The colour scheme is also in line with this theme

The cross is **WHITE**, signifying purity of spirit;

The body of the man lying down is **BLUE**, signifying aspiration towards heavenly things;

The background is **GOLD** or **YELLOW**, signifying the flame of knowledge.

The **FLAG** of the institution also has the three colours of **BLUE**, **WHITE** and **GOLD** representing the same.

ST. JOHN'S NATIONAL ACADEMY OF HEALTH SCIENCES



ST. JOHN'S MEDICAL COLLEGE

AND

ST. JOHN'S INSTITUTE OF ALLIED HEALTH SCIENCES

BENGALURU - 560 034

PROSPECTUS

2021 - 2022

INDEX

SR. NO	PARTICULARS	PAGE NO
1	St. John's National Academy of Health Sciences - An Overview	7
1.1	Introduction, Aims and Objectives	7
1.2	Leadership	8
1.3	History	9
1.4	Milestones	11
1.5	Educational Priority	11
1.6	Campus and infrastructure	12
<i>1.6.1</i>	<i>St. John's Medical College (SJMC)</i>	<i>13</i>
<i>1.6.2</i>	<i>Central Library - The Zablocki Learning Centre</i>	<i>13</i>
<i>1.6.3</i>	<i>St. John's Medical College Hospital</i>	<i>14</i>
<i>1.6.4</i>	<i>Unique teaching learning initiatives at SJMC</i>	<i>15</i>
<i>1.6.5</i>	<i>Research initiatives including Research society and IEC</i>	<i>17</i>
<i>1.6.5.1</i>	<i>Research Institute</i>	<i>18</i>
<i>1.6.5.2</i>	<i>a. Institutional Ethical Committee (IEC)</i>	<i>18</i>
	<i>b. Institution Animal Ethics Committee (IAEC)</i>	<i>18</i>
<i>1.6.5.3</i>	<i>St. John's Research Institute</i>	<i>18</i>
1.7	Student life on the campus	18
1.8	Student support	20
<i>1.8.1</i>	<i>Pastoral and counselling services</i>	<i>20</i>
<i>1.8.2</i>	<i>Hostel Accommodation</i>	<i>21</i>
1.9	Campus discipline	22
<i>1.9.1</i>	<i>Policy on Ragging</i>	<i>22</i>
<i>1.9.2</i>	<i>Policy on other disciplinary issues</i>	<i>22</i>
2	MEDICAL GRADUATE DEGREE (MBBS) COURSE	27
2.1	MBBS Application, counselling and Admission Procedure	27
<i>2.1.1</i>	<i>General Information</i>	<i>27</i>
<i>2.1.2</i>	<i>Eligibility for MBBS Course- MCI Criteria</i>	<i>27</i>
<i>2.1.3</i>	<i>MBBS seat matrix for SJMC</i>	<i>28</i>
<i>2.1.4</i>	<i>MBBS seat matrix defining criteria for categories</i>	<i>28</i>
<i>2.1.5</i>	<i>Common counselling for MBBS admissions by KEA</i>	<i>29</i>
<i>2.1.6</i>	<i>Additional original documents to be produced at the KEA document verification for SJMC admissions 2021</i>	<i>29</i>
<i>2.1.7</i>	<i>Templates of additional certificates for MBBS admission to SJMC</i>	<i>31</i>
<i>2.1.8</i>	<i>Fees for MBBS course</i>	<i>34</i>
<i>2.1.8.1</i>	<i>Fee Chart –MBBS 2021</i>	<i>34</i>
<i>2.1.8.2</i>	<i>Guidelines for Fee payment and refund policy</i>	<i>35</i>
2.2	MBBS Degree Course details	35
<i>2.2.1</i>	<i>MBBS course Outline</i>	<i>35</i>
<i>2.2.2</i>	<i>Essentials for qualifying to appear in professional examination</i>	<i>36</i>

3.	MEDICAL POSTGRADUATE DEGREE COURSES (MD/MS)	38
3.1	Procedure for Application, Counselling and Admission for Postgraduate course	38
3.1.1	General information	38
3.1.2	Seat matrix for medical PG (MD/MS)	39
3.1.2.1	Rules for seat allocation	40
3.1.3	Eligibility for application for PG (MD/MS)	40
3.1.4	Application process	40
3.1.4.1	Additional documents to be submitted for SJMC admission at the time of KEA verification	40
3.1.5	Documents to be submitted to the college at admission	42
3.1.6	Fee for MD/MS courses	43
3.1.6.1	Fee chart	43
3.1.6.2	Fees to be paid at admission	44
3.1.6.3	Guidelines for fee payment from second year onwards	44
3.1.6.4	Fee refund policy on course discontinuation	44
3.1.7	Stipend	45
3.1.8	Scholarships	45
3.1.9	Duties and responsibilities of PG students	45
4.	MEDICAL SUPERSPECIALTY DEGREE COURSE (DM, M.Ch)	46
4.1	Procedure for application for DM/M.Ch.	46
4.1.1	General information	46
4.1.2	Super specialty courses list with eligibility criteria	46
4.1.3	Application and admission process	47
4.1.4	Documents to be submitted at the time of admission	47
4.1.5	Fees for the Super specialty courses	47
4.1.5.1	Fee chart	47
4.1.5.2	Guidelines for fee payment	48
4.1.5.3	Fee refund policy	48
4.2	Procedure for application for DNB	48
4.2.1	General information	48
4.2.2	Super Specialty Courses list with eligibility criteria	48
4.2.3	Application and admission process	49
4.2.4	Fees for the DNB courses	49
4.3	Stipend	49
4.4	Hostel accomodation	49
4.5	Duties and responsibilities of Super specialty students	49
5.	MEDICAL POSTDOCTORAL FELLOWSHIP AND CERTIFICATE COURSES	50
5.1	Procedure for application for admission for one year Postgraduate Doctoral Fellowship courses (PDCC)	50
5.1.1	General information	50

5.1.2	Application procedure for PDCC	51
5.1.3	Documents to be submitted to SJMC at admission	52
5.1.4	Stipend	52
5.1.5	Hostel accommodation	52
5.1.6	Duties and responsibilities	52
6.	ALLIED HEALTH SCIENCES - Procedure for application, selection and admission for all (UG and PG) courses	55
6.1	AHS courses list (UG and PG) and duration	55
6.2	Admission calendar for AHS admissions 2021-2022	57
6.3	Application procedure for all AHS courses including B.Sc.,BPT, M.Sc., MLT, MPT, MHA and DHA	57
6.3.1	General instructions	57
6.3.2	Application fee	57
6.3.3	Instruction for filling the online application form	58
6.3.4	Selection policy for admission	60
6.4	Fee chart for AHS Courses for 2021	61
6.4.1	Guidelines for fee payment	61
6.4.2	Fee refund policy in case of course discontinuation	62
7.	ALLIED HEALTH SCIENCES - GRADUATE PROGRAMME	63
7.1	General information and scope for AHS	63
7.2	Eligibility criteria for admission for AHS and Physiotherapy Graduate Programme	63
7.3	Fee Chart	64
7.4	Hostel accommodation	64
7.5	Course curriculum	64
7.6	Compulsory rotating internship	64
7.7	Attendance	65
7.8	Internal assessment	65
7.9	University examination	65
8.	POSTGRADUATE DEGREE IN ALLIED HEALTH SCIENCES (M.Sc. MLT)	66
8.1	M.Sc. MLT & M.Sc. MIT	66
8.1.1	General information and scope	66
8.1.2	Eligibility	66
8.1.3	Hostel accommodation	67
8.1.4	Course curriculum	67
8.1.5	Attendance	67
8.1.6	Internal assessment	67
8.1.7	University examination	67

8.2	Master of Physiotherapy (MPT)	68
8.2.1	<i>General information and scope</i>	68
8.2.2	<i>Eligibility</i>	68
8.2.3	<i>Fee Chart</i>	68
8.2.4	<i>Stipend</i>	68
8.2.5	<i>Hostel accommodation</i>	68
8.2.6	<i>Course curriculum</i>	69
8.2.7	<i>Attendance</i>	69
8.2.8	<i>University examination</i>	69
9.	POSTGRADUATE COURSE IN HOSPITAL ADMINISTRATION (MHA & DHA)	70
9.1	<i>General information and scope</i>	70
9.2	<i>Course and duration</i>	70
9.2.1	<i>Eligibility</i>	70
9.2.2	<i>Course curriculum</i>	71
9.2.3	<i>Attendance</i>	71
9.2.4	<i>Internal assessment</i>	71
9.2.5	<i>University examination</i>	71
9.3	Diploma in Hospital Administration	72
9.3.1	<i>Duration of the course</i>	72
9.3.2	<i>Eligibility for admission</i>	72
9.3.3	<i>Course curriculam</i>	72
9.3.4	<i>Assessment and examination</i>	73
10.	DOCTORAL (Ph.D.) PROGRAMME	73
11.	FACULTY PROFILE	75
12.	SCHOLARSHIPS	95
13.	AWARDS AND PRIZES	107

1. ST. JOHN'S NATIONAL ACADEMY OF HEALTH SCIENCES - AN OVERVIEW

1.1 INTRODUCTION, AIMS AND OBJECTIVES

INTRODUCTION

The Catholic Bishops' Conference of India (CBCI) established St. John's Medical College in Bengaluru in 1963 with the aim of training healthcare personnel committed to serving the poor and the marginalised. It was dedicated as a memorial of the XXXVIII International Eucharistic Congress held in Bombay in 1964 and named after St. John the Baptist, the Patron of the Pope John XXIII, who was an ardent supporter of this initiative of the Catholic Church in India. Admission to this unaided, non-capitation fee, Christian minority, educational institution is on all India merit basis.

AIMS

While the Institution is intended primarily for training Catholics and especially dedicated personnel like Religious Sisters, who operate a large number of hospitals and dispensaries mainly in medically under-served and rural areas of our country, it is open, to all persons irrespective of religion, caste or community. The Institution seeks to make a qualitative contribution to health care, medical education and research through the training of medical, paramedical, nursing, health management, community health workers, and other personnel who are dedicated to the Healing Ministry in the Spirit of Christ. The Medical College Hospital is intended to assist in the training and to render service in health care to all people irrespective of religion, caste or community, particularly the underprivileged and disadvantaged.

OBJECTIVES

Under the overall policy of the CBCI Society for Medical Education, the objectives of the Institution are grouped as follows:

1. Excellence in all fields of health care education.
2. Impart value education.
3. Upholding respect for life, from the moment of conception to its natural end.
4. A genuine feeling of compassion for the patients and their families as persons.
5. A special thrust to Community Health, fostering the dimensions of participatory team work.
6. Serving the health needs of medically underprivileged brethren.
7. Acquiring the ability to do research, and apply the advances in scientific knowledge to the relevant fields of work.
8. Striving towards promoting holistic health.
9. Acquiring an exemplary steadfastness to principles and moral values so as to be a witness to a life of honesty and integrity.

1.2 LEADERSHIP

(As on October 2021)

GOVERNING BOARD

Most Rev. George Antonysamy
Most Rev. Prakash Mallavarapu
Most Rev. Joshua Mar Ignathios
Most Rev. Peter Machado
Most Rev. Elias Gonsalves
Most Rev. Alex Vadakumthala
Most Rev. Andrews Thazhath
Most Rev. Raphy Manjaly
Rev. Dr. Paul Parathazham
Rev. Fr. Jesudoss Rajamanikam

Rev. Dr. John Varghese
Rev. Dr. J. Charles Davis
Dr. George A. D'Souza
Dr. Tony Raj
Sr. Ria Emmanuel

Chairman, Archbishop of Madras - Mylapore
Archbishop of Visakhapatnam
Bishop of Mavelikara
Archbishop of Bangalore
Archbishop of Nagpur
Bishop of Kannur
Archbishop of Trichur
Archbishop of Agra
Director, St. John's National Academy of Health Sciences
Associate Director, Finance, St. John's National Academy of Health Sciences
Associate Director, St. John's Medical College Hospital
Associate Director, St. John's Medical College
Dean, St. John's Medical College
Dean, St. John's Research Institute
Chief of Nursing Services, St. John's Medical College Hospital

GOVERNING COUNCIL

Chairman
Member
Member
Member
Member
Member / Secretary
Member
Member
Member
Member
Member
Member

Most Rev. Peter Machado (Archbishop of Bangalore)
Rev. Dr. Paul Parathazham (Director, SJNAHS)
Rev. Fr. Jesudoss Rajamanickam (Assoc. Director - Finance)
Rev. Dr. J. Charles Davis (Associate Director - College)
Rev. Dr. John Varghese (Associate Director - Hospital)
Dr. George A. D'souza (Dean - SJMC)
Dr. Sanjiv Lewin (Chief of Medical Services)
Dr. RejiKoshy Thomas (Professor of Ophthalmology)
Dr. Bobby Joseph (Vice Dean, Professor of Community Medicine)
RGUHS, Nominated Member
RGUHS, Nominated Member
Ms. Teena Maria (President, Students' Association)

EXECUTIVE COMMITTEE

Rev. Dr. Paul Parathazham
Rev. Fr. Jesudoss Rajamanickam
Rev. Dr. John Varghese Thekkekkara
Rev. Dr. J. Charles Davis
Dr. George A. D'souza
Dr. Tony S. Raj
Dr. Sanjiv Lewin
Sr. Ria Emmanuel

Director, SJNAHS
Associate Director, Finance SJNAHS
Associate Director, SJMCH
Associate Director, SJMC
Dean, SJMC
Dean, St. John's Research Institute
Chief of Medical Services, SJMCH
Chief of Nursing Services, SJMCH

1.3 IN THE BEGINNING..... a run through the history

The Catholic Church in India had long felt the need of adding a Medical College to the many educational and social welfare institutions through which, over the years, it has served the country. However, the complexities of such a venture, delayed its active consideration until the proposal was pursued by the Catholic Bishops' Conference of India (CBCI). At the request of the CBCI, the late Archbishop of Madras, the Most Rev. Louis Mathias, SDB, prepared and presented a report in 1954, in which he reviewed the total requirement of the project. In 1956, Archbishop Mathias with the aid of medical and financial experts submitted a comprehensive scheme to the Conference and in September 1960, the CBCI took the decision to establish a Medical College, with an attached hospital at Bangalore.

His Holiness, Pope John XXIII agreed to the College being named after his patron, **St. John the Baptist**, as a mark of his personal interest in the project, and of his approval of its aims and ideals. The College was accordingly, named "**St. John's Medical College**" and opened in temporary premises at Bangalore in July 1963.

In the course of their Joint Pastoral letter issued in connection with the XXXVIII International Eucharistic Congress, held in Bombay in 1964, the Catholic Bishops of India, announced their choice of the College project as the Chief Memorial of the Congress. This choice received the warm approval of His Holiness, Pope Paul VI, which was conveyed by him in a special message addressed to His Eminence, Valerian Cardinal Gracias, the then President of the CBCI Society for Medical Education. His Holiness, also established a scholarship in the College in his own name, to be awarded, each year, to the best all-round student completing the MBBS course.



Blessing of the corner stone of the Medical College Project at the Eucharistic Congress in Mumbai, 3 December 1964



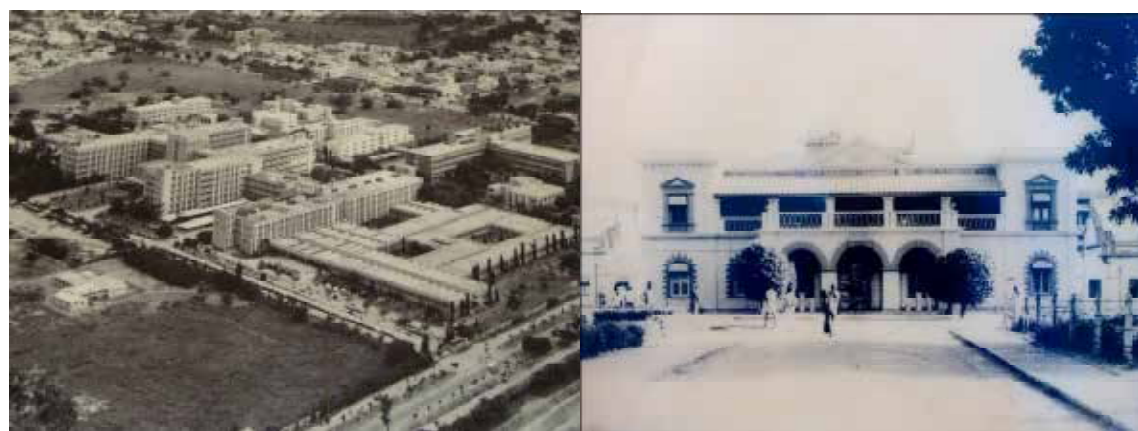
Dedication of the College by his Excellency Dr. Zakir Hussain, former President of India, 1968

The Corner Stone of the Project was blessed by His Holiness Pope Paul VI at Mumbai during the principal function of the Eucharistic Congress, held on 3 December, 1964, at which he officiated. It was laid at the Project site on 27 July, 1965 by His Excellency, Shri V. V. Giri, the then Governor of Karnataka. On the completion of the buildings, the College was dedicated to the cause of medical education, research and patient care on 29 September, 1968, at a ceremony presided over by the late President of India, His Excellency Dr. Zakir Hussain.

Prior to the completion of these buildings, the College was located in the premises of St. Mary's Industrial School and Orphanage, made available by His Grace Archbishop Thomas Pothacamury of Bangalore, for the teaching of pre-clinical and para-clinical subjects. St. Martha's Hospital operated by the Sisters of the Good Shepherd Congregation was affiliated to the College for Clinical Teaching. The Hospital was extended and suitably equipped for the purpose. The affiliation of the Hospital to the College was discontinued from 1983, when SJMC had its own functioning hospital.



The College building - Robert Koch Bhavan in 1980



Aerial view of St. John's Medical College in the early eighties.

St. Martha's Hospital to which St. John's Medical College was affiliated for clinical services and training until 1983.

1.4 MILESTONES

- **1963** – St. John's Medical College commenced at St. Mary's Industrial School and Orphanage
- **1964** – The corner stone of St. John's Medical College was blessed by His Holiness Pope Paul VI at Mumbai on 3rd December, 1964.
- **1965** – Corner stone of St. John's Medical College laid at the Project site by Sri V. V. Giri, Governor of Karnataka and later President of India
- **1968** – St. John's Medical College dedicated to Medical Education, Research and Patient Care by His Excellency, Dr. Zakir Hussain, the then President of India
- **1975** – Out-patient department of St. John's Medical College Hospital was commissioned.
- **1975** – Diploma in Medical Laboratory Technology
- **1980** – St. John's School of Nursing
- **1985** – Diploma in Radiology
- **1989** – Nursing School upgraded to St. John's College of Nursing
- **1994** – St. John's National Academy of Health Sciences
- **1996** – St. John's Silver Jubilee Auditorium
- **1999** – B.Sc., MLT, B.Sc Radiology & CHCA
- **2000** – B.Sc Perfusion Technology and B. Sc Renal Dialysis Technology
- **2004** – St. John's Research Institute
- **2007** – M.Sc. Medical Laboratory Technology commenced
- **2014** – Golden Jubilee block added to the Medical College
- **2015** – Master of Hospital Administration
- **2016** – Bachelor of Physiotherapy
- **2016** – MBBS admissions upgraded to 150 seats
- **2018** – B.Sc. Operation theatre technology, B. Sc Radiotherapy and B. Sc. Anesthesia Technology
- **2020** – Master of Physiotherapy (MPT)

1.5 EDUCATIONAL PRIORITY

Right from its inception, St. John's has set before itself, **an ideal of academic excellence, as well as service to society, with a holistic approach to the problems of community health.** This Institution of Health and Healing envisages the training and participation of the community (including the rural people and the slum dwellers) in health care, in its preventive, promotive and rehabilitative aspects.

The Institution expects its students to uphold the **ethical values and principles of morality as interpreted by the Catholic Church**. It prepares students for the role of future leaders, loyal to the highest ideals of the health profession, and at the same time conscious of social, and economic transformation necessary for healthy human existence at both national and global levels. It encourages doctors, nurses, paramedical staff and other health care professionals to work as a team to deliver comprehensive health care, and where required **rise up to the role of leaders in society helping in developmental activities, to improve quality of life**.

In the Indian context, an effective Health Care Delivery System is a must. Growing population, persistent poverty, illiteracy, unemployment, unavailability of health facilities to a larger section of people, makes the task even more complicated. Today's Health Care Administrators are required to play a dynamic role to face this challenge. St. John's Medical College, Hospital and the Institute of Allied Health Sciences were founded to respond to such a challenge and to meet the primary health needs of our people.

1.6 CAMPUS AND INFRASTRUCTURE

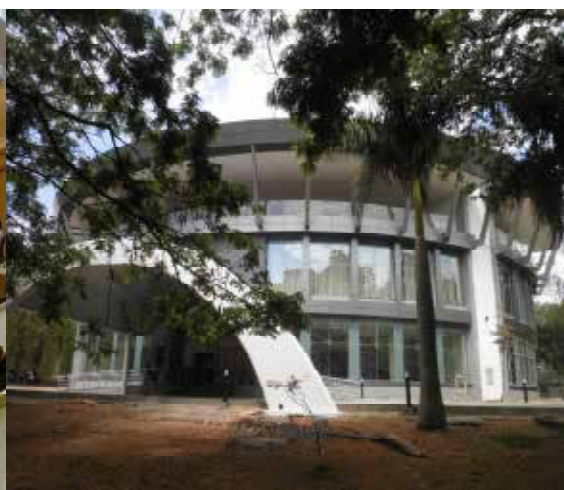
In June 1968, five years after its establishment, the College moved to its permanent 140 acre campus situated at the periphery of the city of Bangalore. It has steadily grown over the years.

St. John's National Academy of Health Sciences consists of the following institutions:

1. St. John's Medical College (1964)
2. St. John's Medical College Hospital (1975)
3. St. John's College of Nursing (1980)
4. St. John's Institute of Allied Health Sciences (1975)
5. St. John's Research Institute (2004)



Pope Paul IV Auditorium, SJRI



St. John's Main Auditorium

1.6.1 ST. JOHN'S MEDICAL COLLEGE

St. John's Medical College has been **consistently ranked among the top ten BEST MEDICAL COLLEGES IN INDIA since 2014**. In the prestigious **National Institutional Ranking Framework (NIRF) the institution was ranked 13 in the Medical category**. The Institution has 07 Rhodes Scholars to date, the maximum from any medical college in India.

The St. John's Medical College building consists of an H shaped **Academic Block** set in a 140 acre **green and Wi-Fi enabled campus**. The academic building has over 10 lecture halls ranging in seating capacity from 30 to 350 and equipped with audio-visual facilities, examination halls with a seating capacity of 800 and well equipped student laboratories. Dispersed throughout the sprawling lush green campus are 4 Auditoria with seating capacity of 200 to 1000 and several smaller lecture halls and discussion rooms to facilitate learning.

The student laboratories attached to the pre and para-clinical departments such as Anatomy, Physiology, Biochemistry, Microbiology, Pathology etc., are well-equipped and aid in providing excellent hands on training to students. Several of the departments have museums which also provide rich learning material.



Anatomy museum

1.6.2 ZABLOCKI LEARNING CENTRE - Medical Central Library

- The library is a focal point to study in any educational institution. Well stocked Central & Departmental Libraries exist in both Hospital and College.
- The Central Library has a digital section with over 30 computers with Internet Access facilities to all faculties and students. RGUHS Helinet Consortium subscribes to over 20 digital databases including Science Direct, Elsevier, Springer, Clinical Key, ProQuest and UpToDate Databases which are accessible directly. Apart from this the Institution also subscribes BMJ and ProQuest Allied Health Databases
- All Faculty and Postgraduates can access digital content remotely.
- Internet Browsing Service and Photocopy Services are available within the Library premises to faculty and students.
- Student Aid Fund Scheme enables the economically challenged students to borrow library books for the duration of the course.

The library continuously strives to develop a comprehensive collection of print as well as digital resources useful for teaching, research and reference purposes, some of which are listed below:

Particulars	No
Books	42256
Journals Bound Volume	28715
Journals subscribed	- Foreign - 111
	- Indian - 69
Reports	1615
Reprints	1700
Dissertations	2112
Audio-Visual Cassettes	44
Slide Sets	14
CD/DVD-Book/Journal Version	805
MEDLINE	1966-2002
E-Books and Journals	
Offline e-books	3634
Online Books (Jaypee)	2935
RGUHS e- Journal	675
BMJ	
ProQuest Online Database	4733



Zablocki Learning Centre (Central Library)

1.6.3 ST. JOHN'S MEDICAL COLLEGE HOSPITAL

St. John's Medical College Hospital which started out with a few hundred beds in 1975 currently has 1350 in-patient beds, distributed among **32 broad speciality and super specialty departments**. Construction is underway to add another 750 beds so as to make it a total 2100 beds. The hospital is well equipped with out-patient and in-patient services and operation theatres for major and minor surgeries. Several sub-specialty clinics are run by various departments in order to provide focussed patient care. Notable among these is the **Unit of Hope** which provides a multidisciplinary team approach to treating children with physical impairments.



St. John's Medical College Hospital

In addition **St. John's Laboratory Services** inclusive of Clinical Microbiology, Clinical Biochemistry Pathology, Clinical Pathology and Genetics have excellent **well-standardised, NABL accredited (since 2006) Service Laboratories**. Most of the diagnostic tests are conducted on automated, advanced instruments and are monitored by a strict quality control and quality assurance programme. There is also a molecular diagnostic and research facility. A state of the art blood bank managed by the Department of Transfusion Medicine and Immunohematology provides services to patients including a large number of Haemophiliac patients, who have registered with the Hospital for regular blood transfusion.



Well-equipped and well-staffed operation theatre complex and imaging facilities

1.6.4 UNIQUE TEACHING-LEARNING INITIATIVES AT SJMC

Medical Education Department Initiatives

The Department of Medical Education (DME) was started as "Medical Education Unit" in 1988. With increasing activities in relation to student and faculty capacity building and **recognition of the unit by the Medical Council of India as one of its 10 Nodal Centres**, the unit became a full-fledged College Department in 2009.

The Primary goal of the DME is to promote innovation and advances in medical education. The Department is also the College's resource for expertise in medical education research. In addition the St John's DME is recognized as a **Nodal Centre of Medical Council of India for MCI's Basic Workshop and the Advance Workshop in Medical Education Technologies**.



SIM - Man3 simulator for hands on training

- **St. John's Alumni Skills Lab** is a state-of-the-art training and research facility, equipped with mannequins (anatomical models of the human body), and simulation centre. This lab focuses on training medical students and health professionals about what to expect, and how to respond in a clinical scenario, thus providing excellent hands on training to students and preparing them for real patient encounters. **Teleconferencing/ tele medicine facilities** available in the skills lab and the hospital, provide our faculty and students opportunities for teaching and learning with international experts.

- **Problem Based Learning Module:** The DME annually organises Problem Based Learning (PBL) workshops for students and faculty. PBL is an educational method that is centred on the discussion and learning that emanates from a clinical problem in a small group setting and encourages students to become more involved and responsible for their own learning. It also encourages an inquisitive and detailed look at all issues, concepts and principles contained within the problem and thus enables a deep understanding of the subject. Students also learn effective communication, teamwork, and leadership, which are essential skills to becoming competent clinicians.

Ethics in Medical Education

St. John's Medical College from its inception has been unique in emphasizing the importance of sensitizing medical students to medical ethics, even when it was not a 'syllabus requirement'. The **Department of Medical Ethics** with expert faculty from various departments and backgrounds ensures that medical students get a broad based, yet in depth understanding of how to handle ethical dilemmas in patient care at a practical level. This exposure to Medical Ethics is provided from the day the student joins i.e., from Orientation day, to Foundation Course, throughout the student years right up to the lively Interns Friday Ethics Debates during internship. The Department is also involved in teaching medical ethics to our Allied Health Science and Health Administration students.



Rural Orientation Programme for the 1st MBBS Students at the Institution's Community Health Training Centre at Mugalur



Interns posting in rural health care centres for 2 months

Humanities in Healthcare

The Division for Humanities and Health under SJRI promotes the idea of the **humanities in health** among practitioners of health care, and provides avenues to educate our students on the links between the humanities and the practice of medicine. By stimulating dialogue between society and health practitioners by means of debate, drama, art, music and creative writing, it aims to realize the ideal of "person-centered" care. This approach, along with the **Major General SL Bhatia Museum of the History of Medicine Museum** maintained by the division provides unique global, historical and evolutionary perspectives to our students enabling them to evolve into more **humane practitioners of medicine.** Three student-led initiatives are located in the Division of Health and Humanities: "Spotlight", the theatre group; "Ecologics", the environmental group and "The Quillosophical Society", the literary group".

Rural Orientation and Emphasis on Health Care for the Marginalised.

In keeping with one of the stated objectives of the Institution which is to serve "the health needs of medically under-served areas of our country and our medically underprivileged brethren", the Department of Community Health conducts a variety of programmes to orient the students to the conditions that prevail in these regions. These **unique community-based educational programs help prepare our students to face the realities of serving the under-served.**

- o Rural Orientation Programme (ROP) at the Institution's Community Health Training Centre in Mugalur Village in First Year.
- o Visit to urban under-privileged areas around SJMC in the Second Year
- o Community Health Action Programme (CHAP) in the Fourth Year.
- o Interns posting in rural health care centres for 2 months

1.6.5 RESEARCH INITIATIVES

Research is a priority across the Campus. Every department has recorded a number of publications, research projects, conferences and seminars to its credit. Several members of the faculty along with students participate actively in research projects every year.

1.6.5.1 Research Society

The institutional Research Society encourages research among the faculty by providing intramural funds for research, biannually. In addition the Research Society also conducts Certificate Courses on Ethics and Research Methodology for faculty and students to encourage research activity in the Institution.

1.6.5.2 a. Institutional Ethical Committee (IEC)

The Institution places a strong emphasis on ethical research. In keeping with these objectives as well as regulatory requirements all Institutional research is approved and monitored by the Institutional Ethical Committee.

1.6.5.2 b. Institution Animal Ethical Committee (IAEC)

1.6.5.3 ST. JOHN'S RESEARCH INSTITUTE (www.sjri.res.in)

St. John's Research Institute (SJRI) is an integral part of St. John's National Academy of Health Sciences. It was conceptualized in the year 1998 and moved into the present facility in the year 2004. SJRI was set up with a commitment to pursue excellence in research and to build capacities in health-related research. The faculty of St. John's Medical College and Hospital are involved in research activities across various disciplines of medicine. There are eight divisions and well-equipped laboratories.



St. John's Research Institute



Major General S.L. Bhatia Museum of the History of Medicine

1.7 STUDENT LIFE ON THE CAMPUS OF ST. JOHN'S MEDICAL COLLEGE

Student life at St. John's Medical College is more than just academics and curriculum. The campus offers an array of intellectual, cultural, sports and recreational opportunities.

- **The sports facilities** at St. John's Medical College include basketball and volleyball courts, football and hockey fields, tennis courts, cricket grounds and a full athletic track. The hostels also have a gymnasium, badminton courts and facilities for indoor games like table tennis, chess and caroms. Sports are actively encouraged on the campus.

The annual **Inter-Class Sports (ICS)** tournaments held in the March-April every year are well attended and is followed by the Annual Sports day. Many students represent the University and also participate at state and national levels in various events. Since 1978, the SJMC Alumni Association also conducts the well known intercollegiate Dr. Isaac Abraham Memorial Hockey tournament.



Annual Inter Class Sports

- The Campus maintains a **vibrant cultural profile**. Extracurricular activities, which promote development of skills, talents, physical and mental health are encouraged. The Institution provides and encourages a variety of activities including music, dramatics, debating and social service. The various campus cultural events provide a platform for students to showcase their talents; be it art, music or drama.



Student cultural activities

- The **Annual campus Inter-Class Cultural (ICC)** events organised by the students goes on for over 2 weeks and includes over twenty different competitive cultural events. Students are also encouraged to participate at intercollegiate and University level sports and cultural activities, without compromising academic standards. **Ethnic Day organised by the Allied Health Sciences students** celebrates the diversity on the campus and fosters a spirit of mutual respect and tolerance.



Autumn Muse, the Annual College Fest



Jingle Rock, the campus Christmas Fest

- **Autumn Muse, the Annual College Fest**, organised on campus since 1989 is an important event in the college cultural calendar of Bengaluru City. Over 25 institutions from Bengaluru and other cities participate in this event, which enables our students to hone their leadership and organisational skills. The proceeds go towards a pre-determined social cause.
- In December the campus comes alive with the sound of 'Jingle Rock', the Annual Christmas Cultural and Food Fest, which heralds the Christmas Spirit on the campus.

1.8 STUDENT SUPPORT

1.8.1 COUNSELLING AND PASTORAL CARE SERVICES

St. Johns Medical College, emphasises the all-round psychospiritual and emotional wellbeing of its students. It has in place several mechanisms for spiritual and student nurture.

Spiritual support

- The central location of the chapels, both in the college and the hospital, reflect the centrality of worship in the life of the community.
- Catholic students are encouraged to participate in the Eucharistic celebration regularly. They are encouraged to participate in additional spiritual activities to equip themselves as committed Christians.
- Participation in the Annual retreat for undergraduates conducted by eminent Christian preachers is compulsory for Catholics and Christians belonging to all denominations. The Annual Value Orientation Programme for students belonging to other communities is also compulsory.
- The Student Prayer Group meets every Friday for a dedicated time of prayer and reflection and is open to students inclined to join.



- The Chaplain and Associate Chaplain from the **Pastoral Care Team** are available to support the spiritual needs of the students, faculty and patients on the Campus.

Counselling services

Life as a student has its own stresses and strains, and sometimes the need may arise to confide in, open up to, or seek guidance from someone. A full time student counsellor is available for students to discuss issues which may be academic or personal in nature.

Student Mentorship Programme:

All under graduate medical students are also assigned to a faculty mentor. The mentorship programme provides emotional support and serves as an anchor in times of need.

Vice Deans and Hostel Wardens

The Vice Deans of the various sections (Undergraduate, Postgraduate and Allied Health Sciences) and the hostel wardens add yet another layer of emotional support and mentorship to students in need of help.

Medical facilities

All students can avail highly concessional medical facilities from the Hospital and the Staff Clinic.

1.8.2 HOSTEL ACCOMODATION

- The College provides hostel accommodation subject to availability for male and female students inclusive of basic furniture. The students are expected to bring their own mattresses, pillows, bed linen mosquito nets and other items of personal use.
- An assistant warden is based at every hostel and a security guard is on duty 24 hours a day



Assisi Block



Alphonsa Block

Cafeteria

- Shops within the campus include a mini-supermart that sells confectioneries, fruits, stationery, toiletries etc.
- The campus has a post office counter with Speed-Post facilities, a bank with 24-hour ATM facilities, a 24-hour pharmacy, two cafeterias and a bookstall.
- Tailoring facilities, photocopying and photo studio shops are available within walking distance of the Campus.
- Administration/discipline at the hostels is governed by the Hostel Rules. These are binding on all students and their infringement may result in disciplinary action. The cost of any damage to hostel property will have to be paid by the hostelites.

1.9 CAMPUS DISCIPLINE

1.9.1 POLICY ON RAGGING

In keeping with the legislative policy of Karnataka State and the country and MCI and RGUHS guidelines, St. John's National Academy of Health Sciences has a '**ZERO TOLERANCE TO RAGGING**' policy. Quoted below are relevant extracts from the Rajiv Gandhi University of Health Sciences circular dated 1 Feb 1997.

“Ragging is a cognizable offence punishable with imprisonment for a term which may extend to one year or with fine according to section 116 of the Karnataka Education Act, 1983, and under various sections of the Indian Penal Code (IPC).”

“Principals are instructed to inform the Police and take necessary action to dismiss the student”.

The institution will deal firmly and strictly with all instances of ragging. If any incident of ragging comes to the notice of the authorities, the concerned student will be given an opportunity to explain. If the explanation is not satisfactory, the authorities will expel the student from the Institution. Hostelites involved in ragging will be expelled from the hostels and will have to make alternate arrangements for accommodation. Names of such students will also be handed over to the police and RGUHS, for further action.

Anti- Ragging Helpline : Phone: 1800-188 – 5522. E-mail: helpline@antiragging.in

1.9.2 POLICIES ON OTHER DISCIPLINARY ISSUES

Punctuality and Academic Attendance

Students are expected to be **regular and punctual** at lectures, demonstrations, seminars, practical classes, field work and other such academic exercises. They are required to maintain **adequate attendance** as mandated by the University in each of the prescribed subjects.

- In case of non-attendance at classes, an application must be presented to the Dean for leave of absence, stating the reason.
- Students whose conduct or attendance or progress is not satisfactory, will not be allowed to appear for the University Examination and may become liable for suspension/expulsion from the College and / or hostel.

Grooming and Dress Policy

Students at St. John's Medical College and Hospital are expected to dress in a manner which projects neatness and professionalism. The dress code emphasises the need for students to focus on academics and express their individuality through personality and academic achievements, rather than outward appearance.

- Aprons and identity badges are mandatory while in the campus.
- The clothing worn should be formal, well fitting, neat, clean and modest, covering the shoulders, with no deep necklines, and adequate hemlines.
- Hair should be clean, and properly groomed. Long hair should be tied/ braided in case of women students. Male students are expected to maintain short hair with no ponytails/ rubber bands. Hair styles/ colours should not disrupt/ distract from the academic process.
- Tattoos and body piercing (except standard ear piercing for women students) are strongly discouraged.
- Footwear should be formal.

Involvement in Associations on Campus And Outside

- Membership of the recognised Students' Association of the College is compulsory. No other association of students in the College will be permitted, without the prior approval of the Dean.
- Those who are required by the rules of the University to do so, must join the NCC or NSC or the Physical training Classes.
- Catholic students are encouraged to join the All India Catholic Medical Guild of St. Luke (CMG), Bangalore, and the All India Catholic University Federation (AICUF).

Policy on Alcohol, Drugs and Smoking.

- Smoking is not permitted on the campus.
- Students are not permitted to serve alcohol within the campuses of SJNAHS. Forcing a fellow student to consume alcohol would be grounds for severe disciplinary action.
- The Indian Penal Code classifies obtaining, keeping or passing on banned drugs (such as marijuana, cocaine, heroin, etc) as a criminal offence. Possession or use of banned drugs will result in expulsion from the College.

Involvement in Strikes And Criminal Acts

- It is illegal to be involved in strikes within the Organization. Students should refrain from disfiguring walls and furniture and from other objectionable practices. Students involved in such activities may be liable for expulsion from the Institution and must also pay for the damages.
- Any other activities which are likely to affect the peace and tranquillity of the institution, involvement in any sort of violence or disturbance both within and outside the institution/any criminal acts/offences as defined in the Indian Penal Code will result in expulsion from the College.

-
- Immoral activity including use of foul language, gestures or any form of abuse would be liable for severe disciplinary action.
 - ‘Wi-Fi’ provided in classrooms and hostels is solely for academic purposes. Any form of its inappropriate use is not allowed.

Other General Guidelines

- The course shall be pursued on **full time basis**. No candidate shall be permitted to work in a health care facility or a related organization or laboratory or any other organizations outside the Institution or engage in any business while studying the course.
- No candidate shall join any other course of study or appear for any other examination conducted by this University or any other university in India or abroad during the period of study, without prior permission from the Dean.
- It is mandatory for hostelites to be members of the students mess. The hostels and dietary are out of bounds for the day scholars.
- The college vehicles are not available for excursions, examinations and external postings.
- The College Office must be kept posted regarding change of address if any, whether local or permanent and contact numbers.
- **Please note that the regulations included in this section are not exhaustive. Students are expected to comply with any disciplinary guidelines which may be issued towards the smooth running of the institution and the academic process.**

MEDICAL COURSES



2. DEGREE OF BACHELOR OF MEDICINE AND BACHELOR OF SURGERY (MBBS)

2.1 PROCEDURE FOR APPLICATION, COUNSELLING AND ADMISSION FOR THE MBBS COURSE AT ST. JOHN'S MEDICAL COLLEGE, BENGALURU : ACADEMIC YEAR 2021-2022

2.1.1 GENERAL INFORMATION

1. St. John's Medical College is a not for a profit, Minority Institution belonging to the Roman Catholic Church in India established to train healthcare personnel committed to serve with integrity and compassion, especially the medically underserved in India.
2. St. John's Medical College (SJMC) is affiliated to the Rajiv Gandhi University of Health Sciences, Karnataka (RGUHS) and recognised by the National Medical Council (NMC).
3. **As per the Government of India policy, counselling for admission to the MBBS Course in St. John's Medical College for the academic year 2021-2022 will be conducted by the Karnataka Examination Authority (KEA). For information on registration, verification of documents and other counselling formalities, kindly refer to the KEA website ([http:// kea.kar.nic.in](http://kea.kar.nic.in)).**
4. In keeping with the mission of the Institution to train healthcare personnel to serve in the medically underserved areas of the Country, all MBBS candidates to SJMC are required, as a condition for admission, to execute a **social obligation service bond to serve for two years in one of the designated hospitals or health centres in a medically underserved area of the Country**. Those who fail to fulfil the obligation service commitment will have to pay the **penalty stipulated by the Governing Board**.
5. Admissions to St. John's Medical College are subject to the regulations and statutory enactments of the University, National Medical Council (NMC), and the Central and the State Governments.

2.1.2 ELIGIBILITY CRITERIA FOR MBBS ADMISSIONS

1. Candidate must have completed 17 years of age on or before 31 December of the year of admission to the MBBS Course.
2. Candidate must have passed in the subjects of Physics, Chemistry, Biology/Biotechnology and English individually and must have obtained a **minimum of 50% marks in Physics, Chemistry and Biology / Bio-technology, taken together**, at the final examination of the Pre-University Course or its equivalent. In respect to candidates belonging to **Scheduled Castes, Scheduled Tribes or Other Backward Classes** the minimum marks obtained in Physics, Chemistry and Biology/Bio-technology, taken together, in the qualifying examination shall be **40% instead of 50%**.
3. Candidate must have appeared in the National Eligibility-cum-Entrance Test UG – 2021 (NEET UG - 2021) and qualified for admission to the MBBS course as per the criteria laid down by the Government of India.
4. Candidate must be an Indian Citizen with Indian domicile (resident of India for at least 7 years preceding application). There is no NRI quota in St. John's.

5. If any of the certificates or information provided at the time of admission is subsequently found to be false, the allotted seat is liable to be cancelled and the candidate will have to pay up the entire course fee and bond penalty.

2.1.3 ST. JOHN'S MEDICAL COLLEGE: MBBS SEAT MATRIX

Sl. No.	Category	Number of seats
1.	All India General Open Merit	10
2.	Institutional Staff Quota (Karnataka)	10
3.	Roman Catholic Christian Religious Sisters (Nuns)	20
4.	Roman Catholic Christian Tribals	10
5.	Roman Catholic Christians of Scheduled Caste Origin	10
6.	Native (Local) North Indian Roman Catholic Christians	10
7.	Roman Catholic Christians of Karnataka State	10
8.	Roman Catholic Christians All India Open Merit	60
9.	Karnataka Open Merit	10
	Total	150

2.1.4 ST. JOHN'S MBBS SEAT MATRIX CATEGORIES - DEFINITIONS

Category 1: All India General Open Merit, includes all Indian Nationals irrespective of gender, religion, caste, community, region or any such affiliations.

Category 2: Institutional Staff Quota (Karnataka) includes children of permanent staff of St. John's National Academy of Health Sciences who have served the Institution for ten continuous years or more.

Category 3: Roman Catholic Christian Religious Sisters (Nuns) includes Religious Sisters (nuns) who are members of Religious Congregations in India recognized by the Roman Catholic Church.

Category 4: Roman Catholic Christian Tribals includes Roman Catholic Christians who are members of recognized Tribal Communities.

Category 5: Roman Catholic Christians of Scheduled Caste Origin includes Roman Catholic Christians belonging to communities of Scheduled Caste origin.

Category 6: Native (Local) North Indian Roman Catholic Christians includes all Roman Catholic Christians who are neither Tribal (Category 4) nor of Schedule Caste origin (Category 5) and who are NOT members of the South Indian States of Kerala, Tamil Nadu, Karnataka, Andhra Pradesh, Telangana, Goa, Puducherry, Maharashtra and Gujarat, and who are NOT migrants or descendants of migrants to North India from the afore-mentioned South Indian States.

Category 7: Roman Catholic Christians of Karnataka State includes all Roman Catholics Christians who have domicile in the State of Karnataka as per the KEA criteria.

Category 8: Roman Catholic Christians All India Open Merit includes all Roman Catholic Christians of India who do not come under the reserved categories 2, 3, 4, 5, 6, 7, 9.

Category 9: Karnataka State Open Merit includes all candidates irrespective of gender, religion, caste, community, region who have domicile in the State of Karnataka as per KEA criteria.

(Note: If any seat falls vacant in any of the Reserved Categories, it will be allocated to Category 8 - Roman Catholic Christians - All India Open Merit).

2.1.5 COMMON COUNSELLING BY KARNATAKA EXAMINATION AUTHORITY (KEA)

Counselling for selection of MBBS students to St. John's Medical College for the academic year 2021-2022 will, as directed by MCI/NMC, be conducted by the Karnataka Examination Authority (KEA). NEET-UG 2021 qualified candidates who wish to apply for MBBS admission to St. John's Medical College should, therefore, **register with the Karnataka Examination Authority as per the KEA Schedule. For detailed information on KEA notifications and information, please visit KEA website (<http://kea.kar.nic.in>) regularly.**

2.1.6 ADDITIONAL ORIGINAL DOCUMENTS TO BE PRODUCED BY APPLICANTS TO ST. JOHN'S MEDICAL COLLEGE FOR THE KEA DOCUMENT VERIFICATION

Applicants to St. John's Medical College, Bengaluru must submit the following original documents in the prescribed format at the time of KEA document verification. These are in addition to the documents required by the KEA. For templates of the additional documents required for admission to St. John's Medical College please refer **Section 2.1.7**.

1. **All Applicants: Category 1 to 9**
 - a. Affidavit undertaking that they will execute a social obligation service bond to serve for two years in one of the designated hospitals or health centres in a medically underserved area of the Country after graduation (**see Certificate format 1a in Section 2.1.7**).
 - b. Supporting document/s to prove residence in India for a period of at least 7 years prior to application for the MBBS course in the form of a study certificate issued by School/s in India stating to show that the candidate has studied for **7 continuous years including Standard XI and XII (see Certificate Template 1b in section 2.1.7)**.
2. **Category Two: Institutional Staff Quota (Karnataka)**
 - a. Eligibility Certificate from Director of St. John's National Academy of Health Sciences.
3. **Category Three: Roman Catholic Christian Religious Sisters (Nuns)**
 - a. Certificate in prescribed format from the Superior General/ Provincial of the applicant stating that the applicant is a bonafide Professed Religious (Nun) (**see Certificate Template 2 in Section 2.1.7**).

4. **Category Four: Roman Catholic Christian Tribals**
 - a. Baptism Certificate attested by the Bishop of the applicant.
 - b. Certificate in prescribed format from the Bishop of the applicant stating that the applicant is a Roman Catholic Christian belonging to a Tribal Community in his Diocese (see **Certificate Template 3 in Section 2.1.7**).
5. **Category Five: Roman Catholic Christians of Scheduled Caste Origin**
 - a. Baptism Certificate attested by the Bishop of the applicant.
 - b. Certificate in prescribed format from the Bishop of the applicant stating that the applicant is a member of the Roman Catholic Christian community of Scheduled Caste origin belonging to his Diocese (see **Certificate Template 4 in Section 2.1.7**).
6. **Category Six: Native (Local) North Indian Roman Catholic Christians**
 - a. Baptism Certificate attested by the Bishop of the applicant.
 - b. Certificate from the Bishop of the applicant stating that the applicant is a Native (Local) North Indian Roman Catholic Christian belonging to his diocese (see **Certificate Template 5 in Section 2.1.7**).
7. **Category Seven: Roman Catholic Christians of Karnataka State**
 - a. Baptism Certificate attested by the Bishop of the applicant.
 - b. Certificate from the Bishop of the applicant stating that the applicant is a bonafide Catholic belonging to his diocese in Karnataka State (see **Certificate Template 6 in Section 2.1.7**).
 - c. Karnataka State Domicile Certificate as prescribed by Karnataka Examination Authority (KEA).
8. **Category Eight: Roman Catholic Christians - All India Open Merit**
 - a. Baptism Certificate attested by the Bishop of the applicant.
 - b. Certificate from the Bishop of the applicant stating that the applicant is a bonafide Catholic belonging to his diocese (see **Certificate Template 7 in Section 2.1.7**).
9. **Category Nine: Karnataka Open Merit**
 - a. Karnataka State Domicile Certificate as prescribed by Karnataka Examination Authority (KEA).

2.1.7 TEMPLATES OF ADDITIONAL CERTIFICATES REQUIRED FOR ADMISSION UNDER THE ST. JOHN'S MEDICAL COLLEGE SEAT MATRIX CATEGORIES

Template 1a For all Applicants to St. John's: Format of Affidavit undertaking to execute a bond to serve in medically underserved areas in the Country for two years after graduation.

(To be submitted on Rs. 100/- stamp paper at the time of KEA Document Verification.)

UNDERTAKING TO EXECUTE BOND TO DO SERVICE IN MEDICALLY UNDERSERVED AREAS

- I, *(Name of Candidate)* son/daughter of *(Name of Father/Mother/Guardian)*
AND
(Name of Father/Mother/Guardian) parent of *(Name of Candidate)* Residing at
(Permanent Address) hereby declare as follows:
1. We understand that St. John's Medical College has a policy that requires its MBBS graduates, after completion of the course, to serve in one of its designated hospitals or health centres in a medically underserved area of the Country for a minimum period of TWO years.
 2. If *(Name of candidate)* is admitted to St. John's Medical College, we undertake to execute a social obligation service bond to do two years of service in a medically underserved area as per the St. John's Medical College policy.
 3. We understand that admission of *(Name of candidate)* to St. John's Medical College will be invalid, if the above-mentioned rural bond is not executed.
- What is stated above is true and correct and further we hereby undertake to act accordingly.

Date	Deponent	Signature of the Candidate
Place	Deponent	Signature of the Parent

Template 1b for all Applicants to St. John's: Format of Study certificate to be issued by the Institution/s where the applicant has studied from Standard VI to Standard XII.

NAME, FULL POSTAL ADDRESS AND TELEPHONE NUMBER OF THE INSTITUTION

This is to certify that Mr./Ms. *(name of applicant)*, has studied from standard to standard in our Institution from to academic years.

Name and Signature of the Head of the Institution

Institution Seal

Template 2 For Category 3 Applicants : Format of the Certificate for Roman Catholic Religious Sisters (Nuns)

(To be issued on the Official Letter head of Superior General/Provincial)

ELIGIBILITY CERTIFICATE FOR RELIGIOUS SISTERS

This is to certify that Sr. (*name of applicant*), KEA APPLICATION NUMBER (*application number*), residing at (*applicant's permanent address*) is a bonafide Professed Religious in the (*name of Province*) Province of the Roman Catholic Religious Congregation of (*name of Congregation*) in the State of (*name the State*).

I further certify that Sr. (*name of applicant*) has been permitted by the Congregation to apply for MBBS admission to St. John's Medical College, Bengaluru.

Name, Signature and Seal of the Applicant's Superior General/Provincial with Date

Template 3 For Category 4 Applicants : Format of Bishop's Certificate for Roman Catholic Tribal

(To be issued on Bishop's Official Letterhead)

ELIGIBILITY CERTIFICATE FOR TRIBAL CATHOLICS

This is to certify that Mr./Ms. (*name of the applicant*), KEA APPLICATION NUMBER (*application number*), residing at (*applicant's permanent address*) is a bonafide Roman Catholic Christian belonging to the (*name of the parish*) Parish in the diocese/archdiocese of (*name of the Diocese*) in the State of (*name of the State*).

I further certify that Mr/Ms (*name of applicant*) belongs to a Roman Catholic Christian Tribal community in my Diocese.

Name, Signature and Seal of the Applicant's Bishop with Date

Template 4 For Category 5 Applicants : Format of Bishop's Certificate for Roman Catholic Christians of Scheduled Caste Origin

(To be issued on Bishop's Official Letterhead)

ELIGIBILITY CERTIFICATE FOR ROMAN CATHOLIC CHRISTIANS OF SCHEDULED CASTE ORIGIN

This is to certify that Mr./Ms. (*name of the applicant*), KEA APPLICATION NUMBER (*application number*), residing at (*applicant's permanent address*) is a bonafide Roman Catholic Christian belonging to the (*name of the parish*) Parish in the diocese/archdiocese of (*name of the Diocese*) in the State of (*name of the State*).

I further certify that Mr./Ms. (*name of applicant*) is a member of Roman Catholic Christian Community of Scheduled Caste origin in my Diocese.

Name, Signature and Seal of the Applicant's Bishop with Date

Template 5 For Category 6 Applicants : Format of Bishop's Certificate for Native (Local) North Indian Roman Catholic Christians

(To be issued on Bishop's Official Letterhead)

ELIGIBILITY CERTIFICATE FOR NATIVE (LOCAL) NORTH INDIAN CATHOLICS

This is to certify that Mr./Ms. (*name of the applicant*), KEA APPLICATION NUMBER (*application number*), residing at (*applicant's permanent address*) is a bona fide Roman Catholic Christian belonging to the (*name of the parish*) Parish in the diocese/archdiocese of (*name of the Diocese*) in the North Indian State of (*name of the State*).

I further certify that Mr/Ms (*name of applicant*) is a Native North Indian Roman Catholic Christian and that he/she is neither a tribal nor of scheduled caste origin nor a migrant or a descendant of migrants from any of the following South Indian States: Kerala, Tamil Nadu, Karnataka, Andhra Pradesh, Telangana, Goa, Puducherry, Maharashtra and Gujarat.

Name, Signature and Seal of the Applicant's Bishop with Date

Template 6 For Category 7 Applicants : Format of Bishop's Certificate for Roman Catholic Christians of Karnataka State

(To be issued on Bishop's Official Letterhead)

ELIGIBILITY CERTIFICATE FOR ROMAN CATHOLIC CHRISTIAN WITH KARNATAKA DOMICILE

This is to certify that Mr./Ms. (*name of the applicant*), KEA APPLICATION NUMBER (*application number*), residing at (*applicant's permanent address*) is a bonafide Roman Catholic Christian belonging to the (*name of the Parish*) Parish in the Diocese/Archdiocese of (*name of the Diocese*) in the State of Karnataka.

Name, Signature and Seal of the Applicant's Bishop with Date

Template 7 for Category 8 Applicants : Format of Bishop's Certificate for Roman Catholic Christians - All India Open Merit

(To be issued on Bishop's Official Letterhead)

ELIGIBILITY CERTIFICATE FOR ROMAN CATHOLIC CHRISTIANS ALL INDIA OPEN MERIT

This is to certify that Mr./Ms. (*name of the applicant*), KEA APPLICATION NUMBER (*application number*), residing at (*applicant's permanent address*) is a bonafide Roman Catholic Christian belonging to the (*name of the parish*) Parish in the Diocese/Archdiocese of (*name of the Diocese*) in the State of (*name of the State*).

Name, Signature and Seal of the Applicant's Bishop with Date

2.1.8 FEE FOR THE MBBS COURSE

2.1.8.1 FEE CHART – MBBS 2021

1. First year fee to be paid in full to KEA at the time of Admission

Amount in Rs.

Admission fee	31,600/-
Refundable deposits	14,000/-
Annual Tuition	5,50,000/-
Other Annual fee	78,330/-
Total College fee	6,73,930/-
RGUHS fee*	12,000/-
Total fees payable to KEA at the time of admission	6,85,930/-

Note: For the mode of payment of the Admission and first year fee please check KEA website. Please DO NOT pay the Admission and first year fee to St. John's Medical College.

2. **The fee structure is subject to revision from time to time by the Management and/or as per KEA/RGUHS/Government regulations.**

3. **Payment of fees from the second year onwards:** As per current norms, annual fee to be paid to the College from the 2nd year onwards is Rs.6,28,330/-. This annual fee is to be paid in 2 Installments, on 01 January and on 01 July.

Mode of Fee Payment:

- Payment through Bank Card.
- Demand draft in favour of St. John's Medical College payable at Bengaluru.
- Online transfer NEFT / RTGS (Details of UTR number to be emailed to accounts.sjmc@stjohns.in)
- (Cash payment will NOT be accepted)

Bank Details for Online Transfer

- Account Holder: St. John's Medical College
- Bank Name: Bank of Baroda
- Account Number : 05210200000212
- IFSC Code: BARB0STJOHN (note: fifth digit is Zero)

Please note:

1. The Annual Fee does not include Hostel, Mess and University fee.
2. Late payments will attract a penalty.
3. Students with extended Academic tenure because of failure will have to pay additional installments over and above the regular installments.
4. Refundable deposits should be claimed within three months of completing the rural bond, failing which the deposits would be forfeited by the students.

2.1.8.2 Fee Refund Policy on discontinuation of the course:

- **Fee status on course discontinuation:** A student who discontinues the Course after admission but before the commencement of classes **will not be entitled for refund** of the fee /deposits already paid **unless the seat vacated is taken up by another candidate.** If the vacated seat is taken up by another candidate, the fee paid will be refunded after deduction of 10% as service charges.
- If a student discontinues the course during the course period for any reason, he/she will have to pay the fee for the remaining period of the course to the Institution,
- Students discontinuing the course at any time will also have to pay the penalty for not doing the two-year rural bond service.

2.2 MBBS-COURSE DETAILS

2.2.1 Course Outline:

- The current curriculum for MBBS applicable from the Academic year 2019-20 onwards is competency based and focuses on the Medical Graduate being competent to perform tasks of a “primary care physician of first contact”, after completion of training. The learner has to take responsibility for their own learning. The MBBS course is of four and a half years duration and is followed by one year of **Compulsory Rotating Residential Internship.**
- The broad guidelines of the course are given below
- The course begins with a **Foundation Course** sensitising the students to the health situation in India, the role of doctors in the community and basic principles of Communication & Ethics.
- The undergraduate course in medicine comprises of three Phases.

Phase I - The first stage of 12 months duration (Term 1 and 2) consists of the basic sciences - Anatomy, Physiology and Biochemistry. This will be followed by **the 1st Professional Examination.** Passing in the First Professional Examination is compulsory before proceeding to Phase II training. Supplementary examination will be conducted shortly after so that the students who pass can join the main batch. Those students who fail in the supplementary examination will have to appear in the subsequent year.

Phase II - The next stage is of 12 months duration (Term 3 - 4) and comprises of clinical and para-clinical subjects-Pharmacology, Pathology, Microbiology and Forensic Medicine. This will be followed by the **2nd Professional Examination.** A student, who fails in the 2nd Professional examination, can proceed with the training but shall not be allowed to appear in the 3rd Professional Part I examination unless he passes all subjects of 2nd Professional examination.

Phase III - The penultimate stage is of 12 months duration (Terms 5 and 6) and covers Ophthalmology, ENT and Community Medicine. This will be followed by the **3rd Professional Part 1 Examination.** A student, who fails in the 3rd Professional examination, can proceed with the training but shall not be allowed to appear in 3rd Professional Part 2 examination unless he passes all subjects of the 3rd Professional Part 1 examination.

Phase IV- The last stage is of 12 months duration (Terms 7- 9) and covers General Medicine, Paediatrics, Surgery, Orthopedic Surgery and Obstetrics & Gynaecology. It is to be noted that the students will be attending Clinical postings and lectures in these subjects from 3rd term itself. The end of 9th term will be followed by the **3rd Professional Part 2 Examination**. A Student, who fails in the 3rd Professional Part 2 examination cannot proceed to Internship unless he passes all subjects of 3rd Professional Part 2 examination.

- The clinical subjects to be taught during Phase II and III are Medicine and its allied specialities, Surgery and its allied specialities, Obstetrics and Gynaecology and Community Medicine.
- Besides clinical posting as per schedule mentioned herewith, rest of the teaching hours will consist of didactic lectures, demonstrations, seminars, group discussions, etc. in various subjects.
- Clinical skills will be taught not only at the bedside of the patients, but also in the well-equipped skills lab, use of simulated patients and paper-based cases.
- In addition to teaching of the medical subjects mentioned above Medical Ethics, Professionalism and Communication Skills will also be taught.
- Research methodology will be taught and students will have ample opportunities to do research under the guidance of one faculty, which is entirely voluntary and student driven.
- **The internship lasting 12 months** comprises of rotations in Community Health, Medicine, Surgery, Obstetrics & Gynaecology, Paediatrics, Orthopaedics, Emergency Medicine and short electives in various specialties. All these are as per the guidelines of the MCI/NMC

2.2.2. Essentials to be eligible to appear for University examination

- **Course completion:** Satisfactory completion of the approved course of study in the subject/subjects for the prescribed duration.
- **Attendance :** Not less than 75% of the total classes conducted in theory and not less than 80% of the total classes conducted in practical separately in a given subject to be eligible for the University examination in that subject / subjects.
- **Internal Assessment (IA):** Minimum of 40% marks to be obtained separately in theory and practical to appear for University examination. At least 50% marks of the total combined in theory and practical assigned for IA is to be obtained in a particular subject (The average of ALL internal assessment examinations will be computed in theory and practical separately. The internal assessment will include formative and summative assessment.)
- **Certifiable competencies:** Learners must have completed the required certifiable competencies for that phase of training and completed the logbook appropriate for that phase of training to be eligible for appearing at the final university examination of that subject.

Note: Refer Rajiv Gandhi University of Health Sciences website www.rguhs.ac.in for further details of the course and exam structure.

Checklist at the time of application to KEA

1. Application form duly filled as per KEA guidelines
2. All candidates - Affidavit undertaking to execute a bond to serve in a medically underserved area for a period of 2 years after graduation (Refer 2.1.7)
3. All candidates - Study certificate to issued by Institution where candidate has studied in the prescribed format (Refer 2.1.7)
4. Category - specific eligibility document as specified under 2.1.7 (E.g., Baptism certificate/ Bishop certificate/Karnataka state domicile certificate etc.)

3. MEDICAL POST GRADUATE DEGREE COURSES

3.1 PROCEDURE FOR APPLICATION, COUNSELLING AND ADMISSION FOR MEDICAL POSTGRADUATE COURSES (MD/MS) AT ST. JOHN'S MEDICAL COLLEGE, BENGALURU, FOR THE ACADEMIC YEAR 2021-2022.

3.1.1 GENERAL INFORMATION

- St. John's Medical College is affiliated to the Rajiv Gandhi University of Health Sciences, Karnataka and recognised for post-graduate degree courses, with the approval of the National Medical Commission and the Government of Karnataka.
- The courses and the number of seats and the category-wise seat matrix for admission to St. John's Medical College for the academic year 2021-2022 is given in section 3.1.2
- Applications may be submitted for the above-mentioned courses by those who have a recognized Graduate degree / Post-graduate Medical Diploma and Qualified in PG NEET-2021
- Post-graduate Medical Admissions (MD and MS) to St. John's Medical College, Bengaluru, will be conducted by Karnataka Examination Authority (KEA) through Common Counselling. Candidates require to apply through KEA. For dates of application, document verification and other details, please refer to the KEA Website. (<http://kea.kar.nic.in>). For additional documents required for application to St. John's Medical College, please see section 3.1.4.1 below.
- Admission to various courses will be provisional and subject to confirmation of eligibility by the Rajiv Gandhi University of Health Sciences (RGUHS). The decision of the University with regard to eligibility is final.
- For Date of commencement of the classes and course curriculum details, including duration of various courses, syllabi etc., please refer to the Rajiv Gandhi University of Health Sciences Website : www.rguhs.ac.in

3.1.2. SEAT MATRIX FOR MEDICAL POSTGRADUATE (MD/MS) ADMISSIONS TO ST. JOHN'S MEDICAL COLLEGE FOR THE ACADEMIC YEAR 2021-2022

DEGREE COURSES (3 YEARS)	CATEGORY1 Roman Catholic Religious Nuns with SJMC Approved Rural Service*	CATEGORY2 SJMC Alumni with SJMC approved Rural Service*	CATEGORY3 Roman Catholic Christian All India Open Merit	CATEGORY4 General Open Merit	Total No of Seats
M.D. Anaesthesia	-	4	5	5	14
M.D. Anatomy	-	-	-	4	4
M.D. Biochemistry	-	-	1	3	4
M.D. Community Health	-	2	2	4	8
M.D. Dermatology	-	2	2	1	5
M.D. Emergency Medicine	-	1	1	1	3
M.S. ENT	-	1	1	1	3
M.D. Family Medicine	1	1	-	1	3
M.D. Forensic Medicine	-	-	-	1	1
M.D. General Medicine	2	5	5	3	15
M.S. General Surgery	1	2	1	1	5
M.D. Microbiology	-	-	1	3	4
M.S. Obstetrics & Gynaecology	2	2	2	2	8
M.S. Ophthalmology	-	1	1	1	3
M.S. Orthopaedics	-	3	2	1	6
M.D. Paediatrics	2	3	3	1	9
M.D. Pathology	-	2	3	3	8
M.D. Pharmacology	-	-	1	3	4
M.D. Physical Medicine and Rehabilitation	-	1	-	1	2
M.D. Physiology	-	-	-	4	4
M.D. Psychiatry	1	2	1	1	5
M.D. Radiodiagnosis	-	4	4	2	10
M.D. Radiation Oncology	-	1	-	1	2
M.D. Transfusion Medicine & Immuno Haematology	-	-	-	1	1
Total	9	37	36	49	131

*Please note that candidates applying for the MD/MS courses in the Academic year 2021-22 under category 1 and 2 are required to complete the mandatory 2- year rural service obligation latest by 31 December 2021.

3.1.2.1 RULES FOR SEAT ALLOCATION

- If any seat allotted to Category 1 is unclaimed, it will be allotted to Category 2.
- If any seat allotted to Category 2 is unclaimed, it will be allotted to Category 3.
- If any seat allotted to Category 3 is unclaimed, it will be allotted to Category 4.

3.1.3 ELIGIBILITY CRITERIA FOR ADMISSION FOR MEDICAL POST-GRADUATE COURSES AND SOCIAL OBLIGATION SERVICE DETAILS

- Completion of M.B.B.S Degree / Post graduate Medical Diploma from any University recognised by the National Medical Commission and the Compulsory Rotating Internship of one year on or before 31/03/2021.
- Registration with the Indian Medical Council.
- PG-NEET 2021 qualified.
- **Execution of one year Social Obligation Service to serve in SJMCH / Affiliated hospitals after completion of the PG course. (This is not applicable to SJMC alumni who have completed two years of rural service). The Social Obligation Service penalty is Rs.5,00,000/-.**

3.1.4 APPLICATION PROCESS

- **Postgraduate Medical Admissions (MD and MS) to St. John's Medical College, Bengaluru, will be conducted by Karnataka Examination Authority (KEA) through Common Counselling. Candidates must apply through KEA. For dates, documents and other details please refer to the KEA Website. (<http://kea.kar.nic.in>).**
- **Candidates applying to St. John's Medical College are required to produce additional documents category wise, in the prescribed format. (Please refer subsection 3.1.4.1)**

3.1.4.1 ADDITIONAL DOCUMENTS REQUIRED FOR ADMISSION TO ST. JOHN'S MEDICAL COLLEGE, BENGALURU AND CERTIFICATE FORMATS**Category 1 Candidates: (Roman Catholic Religious Sisters (Nuns) with two year rural service in SJMC approved centres)**

1. Certificate of bona fide membership in a Religious Congregation from Superior General/ Provincial Superior. (See certificate format 1)
2. Certificate of two-year rural service issued by Director SJMC. (See Certificate format 2)

Category 2 Candidates: (SJMC Alumini with Rural Service)

1. Certificate of two-year rural service issued by Director SJMC (See Certificate format 2)

Category 3 Candidates : (Roman Catholic Christians All India Open Merit)

1. Baptism Certificate from the Candidate's Parish in English Language attested by the Bishop of the candidate's Diocese.

2. Roman Catholic Christian Membership Certificate from the Bishop of the candidate's Diocese in the prescribed format (See Certificate Format 3)

Category 4 Candidates: (General Open Merit) No additional documents required

- **Please note that certificates which are not in the prescribed format will not be accepted**

CERTIFICATE FORMATS FOR ADDITIONAL CERTIFICATES LISTED ABOVE**CERTIFICATE FORMAT 1****FOR PG CATEGORY 1 : ROMAN CATHOLIC RELIGIOUS SISTERS (NUNS)**

(To be issued on Official Letter Head of Superior General/Provincial)

ELIGIBILITY CERTIFICATE FOR RELIGIOUS SISTERS (NUNS)

This is to certify that Sr. *(name of applicant)*, KEA APPLICATION NUMBER *(application number)*, residing at *(applicant's permanent address)* is a bonafide Professed Religious in the *(name of Province)* Province of the Roman Catholic Religious Congregation of *(name of Congregation)* in the Roman Catholic Diocese of *(name the Diocese)* in the State of *(name the State)*.

I further certify that Sr. *(name of applicant)* has been permitted by the Province/ Congregation to apply for MD/MS admission to St. John's Medical College, Bengaluru.

Name, Signature and Seal of the Applicant's **Superior General/Provincial**

Date

CERTIFICATE FORMAT 2**FOR PG CATEGORY 1 AND 2 : ST. JOHN'S STUDENTS WITH RURAL SERVICE**

(To be issued on the Official Letter Head of the Director, St. John's National Academy of Health Sciences)

ELIGIBILITY CERTIFICATE FOR ST. JOHN'S STUDENTS WITH RURAL SERVICE

Ref. No.

Date:

CERTIFICATE

This is to certify that Dr. *(name of the applicant)* MBBS Graduate *(year of admission)* of this Institution has done two years Rural Service as required by the Social Obligation Service executed by him/her at the time of admission to St. John's Medical College.

Dr. *(Name of the Applicant)* is eligible for postgraduate Admissions 2021-22 in St. John's Medical College under Category 1 *(Roman Catholic Religious nuns with SJMC approved Rural Service)* or Category 2 *(SJMC Alumini with SJMC Rural Service)*

Director, SJMC

CERTIFICATE FORMAT 3**FOR PG CATEGORY 3: ROMAN CATHOLIC CHRISTIANS - ALL INDIA OPEN MERIT**

(To be issued on Bishop's Official Letter Head)

**ELIGIBILITY CERTIFICATE FOR ROMAN CATHOLIC CHRISTIANS
ALL INDIA OPEN MERIT**

This is to certify that Dr. *(name of the applicant)*, KEA APPLICATION NUMBER *(application number)*, residing at *(applicant's permanent address)* is a bonafide Roman Catholic Christian belonging to the *(name of the Parish)* Parish in the Diocese/Archdiocese of *(name of the Diocese)* in the State of *(name of the State)*.

Name, Signature and Seal of the **Bishop** of the Applicant's Diocese

Date

3.1.5 CHECK LIST OF DOCUMENTS TO BE SUBMITTED AT THE TIME OF ADMISSION WHILE REPORTING TO THE COLLEGE

Original copies of the following documents need to be submitted at the time of admission:

1. M.B.B.S. Degree or Provisional Pass Certificate.
2. Statements of marks of all M.B.B.S. Examinations
3. Caste Certificate (if SC/ST / OBC).
4. Compulsory Rotating Internship Certificate.
5. State Medical Council Registration Certificate.
6. Conduct Certificate from the Head of the Institution from where the candidate completed the M.B.B.S. Course.
7. Post-graduate diploma certificate, if any.
8. For former students of this institution, a certificate of service in rural and underserved areas in this country, issued by the Director of SJMC in the format given above.
9. NEET (PG) 2021 - Results
10. Transfer certificate (Students from colleges other than St. John's Medical College)
11. Migration certificate and Eligibility certificate (Students from Universities other than RGUHS).
12. SJMC Social Obligation Service as stipulated under 3.1.3 on stamp paper.
13. Photocopies of certificates showing distinctions, scholarships, honours, medals at MBBS and extracurricular activities at Inter collegiate or State level, if any.
14. Six passport size photographs

Should a candidate secure admission, all the original certificates should be submitted to the College until the completion of the Course. It is mandatory for all students to register with the Karnataka Medical Council for the duration of their course.

3.1.6 FEES FOR THE POSTGRADUATE (MD/MS) COURSES**3.1.6.1 FEE CHART****MEDICAL POSTGRADUATE COURSES 2021 FEE CHART**

Sl. No	Courses	Admission Fee (Rupees)	Refundable deposits (Rupees)	Annual Fee (Tuition & other fee) (Rupees)*	Total College Fee (Rupees)	Total College & RGUHS Fee (Rupees)
1	<u>CATEGORY 1</u> MD Anatomy, MD Physiology MD Biochemistry MD Forensic Med.	23,500	16,000	2,25,520	2,65,020	2,80,020
2	<u>CATEGORY 2</u> MD Microbiology	23,500	16,000	3,73,520	4,13,020	4,28,020
3.	<u>CATEGORY 3</u> MD Pharmacology	23,500	16,000	5,23,520	5,63,020	5,78,020
4	<u>CATEGORY 4</u> MD Pathology MD Community Med	23,500	16,000	7,25,170	7,64,670	7,79,670
4	<u>CATEGORY 5</u> MD Gen Medicine MD Paediatrics MD Anaesthesia MD Emergency Med MD Family Medicine MD Psychiatry MD PMR MD Transf Med. & Immuno. Haemat MD Radiation Onco. MS Gen Surgery. MS ENT MS Ophthalmology	23,500	16,000	10,05,520	10,45,020	10,60,020
5	<u>CATEGORY 6</u> MD Dermatology MD Radiology, MS OBG, MS Orthopaedics	23,500	16,000	11,55,520	11,95,020	12,10,020

* The Annual fee has to be paid in 2 Installments every 6 months from the second year onwards.

Note: 1. This table does not include hostel and mess fee.

2. The fee structure given above is subject to revision from year to year by the Management and/or as per the KEA/RGUHS/MCI/Govt notifications (on stipend and fee structure) without prior notice. In this case the changed fee structure will be intimated on the College notice board.

3.1.6.2 Fee to be paid at the time of admission

- The fee amount is indicated in the fee chart 3.1.6.1. The mode of fee payment for admission will be as per KEA guidelines and will be intimated at time of Admission on KEA website. Please check for updates on KEA and SJMC websites.

3.1.6.3 Guidelines for fee payment from 2nd year onwards:

Mode of fee payment:

1. Demand draft drawn in favour of “**St. John’s Medical College, Bengaluru**”
2. Payment through Bank card
3. Online transfer NEFT/RTGS (Details of UTR number to be emailed to accounts.sjmc@stjohns.in)

St. John’s Medical College Bank details:

Bank name: Bank of Baroda
A/c No. 05210200000212
IFSC code: BARB0STJOHN (Fifth digit is zero)

- Cash payments will not be accepted.
- The students are required to pay the prescribed annual fee at the time of admission for the first year and once in every six months i.e. in the months of July and January, for the subsequent academic years. The entire term fee is to be paid in one installment to St. John’s Medical College, Accounts section. No part payment will be accepted. The prescribed fee should be paid **within one month of the commencement of each term**. Late payments will attract a penalty of Rs. 50/- per day which will have to be paid along with the fee.
- Examination fee as prescribed by Rajiv Gandhi University of Health Sciences and other fee, if any, will be notified at the time of admission or at the appropriate time.
- All candidates have to pay a caution deposit of Rs.10,000/-, Library deposit of Rs.3,000/- and laboratory deposit of Rs.3,000/- at the time of admission. These amounts will be refunded, after deduction of dues, if any, when the student leaves the Institution on completion of the Course.

3.1.6.4 Fee Refund policy on discontinuation of the course

- A student who discontinues the course after admission but before the commencement of the course, will not be entitled to refund of the fee paid and deposits made to the Institution, unless the seat that has fallen vacant due to the discontinuation, is filled up by another candidate. *If the vacated seat is filled up fee paid will be refunded after deduction of 10% as service charges.*

- If a student discontinues the course during the course period for any reason, he/she will have to refund the entire stipend paid by the Institution upto the time of discontinuation and pay the fee for the remaining period of the course. He/She shall also forfeit all the deposits and other fee paid to the Institution.
- Students discontinuing the course, who have signed the 1-year Social Obligation Service to serve in SJMCH and affiliated hospitals will have to pay the Social Obligation Service penalty.

3.1.7 STIPEND

- Postgraduate students will be paid a stipend of Rs. 45,000/- per month in the first year, Rs.50,000/- in the second year and Rs 55,000/- in the third year, as per current norms.

3.1.8 SCHOLARSHIP

A limited number of scholarships are available for deserving candidates. Details will be available with the Academic section, St. John’s Medical College, Bengaluru.

3.1.9 DUTIES AND RESPONSIBILITIES

Duties and Responsibilities of the PG students will be determined by the Dean and the RGUHS guidelines issued from time to time. They will be required to perform such work as may be needed in the legitimate interest of patient care, research, teaching etc., as decided by the Dean and the Head of the Department.

* * * * *

4. MEDICAL SUPER SPECIALTY COURSES

4.1 PROCEDURE FOR APPLICATION, COUNSELLING AND ADMISSION FOR MEDICAL SUPER SPECIALTY COURSES (DM/M.Ch.) AT ST. JOHN'S MEDICAL COLLEGE, BENGALURU FOR THE ACADEMIC YEAR 2021-2022.

4.1.1 GENERAL INFORMATION

- St. John's Medical College is affiliated to the Rajiv Gandhi University of Health Sciences, Karnataka and recognised for Super Specialty (DM/M.Ch.) courses, with the approval of the Government of Karnataka and National Medical Commission. The courses and the number of seats available in each of these are listed in **section 4.1.2**
- Admission to various courses will be provisional and is subject to confirmation of eligibility by the Rajiv Gandhi University of Health Sciences (RGUHS). The decision of the University with regard to eligibility is final.**
- The date of commencement of the classes will be notified as per RGUHS guidelines, for course details refer website www.rguhs.ac.in.

4.1.2 SUPER SPECIALTY COURSES (3 YEARS) AND ELIGIBILITY (as per NMC)

Name of the course	No of seats	Prior Requirement- The following degree/s or the equivalent (DNB)
DM Cardiology	1	MD General Medicine / MD Paediatrics/ MD Respiratory Medicine
DM Critical Care Medicine	4	MD General Medicine/MD Anaesthesia/ MD Chest Medicine/MD Emergency Medicine
DM Endocrinology	2	MD General Medicine/ MD Pediatrics/ MD Respiratory Medicine
DM Gastroenterology	3	MD General Medicine
DM Neonatology	3	MD Paediatrics
DM Nephrology	3	MD General Medicine/ MD Paediatrics
DM Neurology	2	MD General Medicine/ MD Paediatrics
DM Pediatric Nephrology	1	MD Paediatrics/MD General Medicine
DM Pulmonary Medicine	2	MD General Medicine/ MD Paediatrics/ MD Respiratory Medicine
M.Ch. Gynaecologic Oncology	1	MD/MS Gynaecology and Obstetrics
M.Ch. Neurosurgery	1	MS Surgery
M.Ch. Paediatric Surgery	2	MS Surgery
M.Ch. Plastic Surgery	2	MS Surgery
M.Ch. Surgical Oncology	1	MS Surgery/ MS ENT/ MS Orthopaedics/ MD Obst. & Gynae.
M.Ch. Urology	1	MS Surgery

4.1.3 APPLICATION AND ADMISSION PROCESS

Admissions for all Super Speciality courses will be done, based on central counselling conducted by the Medical Counselling Committee (MCC) of DGHS, Ministry of Health and Family welfare and Government of India on the basis of NEET Super specialty. Specific details based on the Government directive at the time of admission will be notified on the SJMC website (www.stjohns.in)

Selected students will have to sign a one year bond to serve in SJMCH/affiliated Hospitals after Completion of course. The bond penalty is Rs. 5,00,000/-

4.1.4 DOCUMENTS TO BE SUBMITTED AT THE TIME OF ADMISSION

Original copies of the following documents need to be submitted at the time of admission:

- M.B.B.S. Degree and Post-graduate degree certificates.
- Statements of marks of all M.B.B.S. and MD/MS Examinations.
- Caste Certificate (if SC/ST/OBC) from relevant authority.
- Karnataka Medical Council Registration (Mandatory).
- Conduct Certificate from the Head of the Institution from where the candidate completed the MD/MS/DNB Course.
- Copies of certificates showing distinctions, scholarships, honours, medals and extra curricular activities at Inter collegiate / State level.
- NEET super specialty 2021 - Results
- Transfer certificates (Students from colleges other than St. John's Medical College), Migration certificate and Eligibility certificate (Students from Universities other than RGUHS)

Should a candidate secure admission, all the original certificates will be deposited in the College until the completion of the course.

4.1.5 FEES FOR THE SUPER SPECIALTY COURSES

4.1.5.1 FEE CHART

MEDICAL SUPER SPECIALTY COURSES - 2021 FEE CHART

Sl. No	Courses	Admission Fee (Rupees)	Refundable deposits (Rupees)	Annual Tuition & other fees (Rupees)*	Total College Fee (Rupees)	Total College & RGUHS Fee at admission (Rupees)
1	M.Ch Pediatric Surgery	35,200/-	16,000/-	5,30,800/-	5,82,000/-	6,02,000/-
2	All other Super Specialty Courses	35,200/-	16,000/-	9,84,620/-	10,35,820/-	10,55,820/-

*Annual fee has to be paid every year in two installments in the second and 3rd year.

Note: 1. The above fee is subject to revision from time to time by the management and / or as per DME / RGUHS / NMC / Government regulations. In this case the changed fee structure will be intimated on the college notice board.

2. This does not include Hostel and Mess fee.

4.1.5.2 Guidelines for fee payment

- The students are required to pay the prescribed fee for the admission year in the format which will be intimated at time of admission and will be as per regulatory requirements.
- The Annual fee for the 2nd and 3rd year will be paid in 2 installments term wise (every 6 months)
- The term fee will have to be paid in one installment in St. John's Medical College Accounts section. No part payment will be accepted. The prescribed fee should be paid within one month of the commencement of each term. Late payments will attract a penalty of Rs.50/- per day which will have to be paid along with the term fee.
- The Examination fee as prescribed by the Rajiv Gandhi University of Health Sciences and other fees, if any, will be notified at the time of admission or at the appropriate time.
- All candidates have to pay a caution deposit of Rs.10,000/-. Library deposit of Rs.3,000/- and Lab. Deposit of Rs.3,000/- at the time of admission. This will be refunded after the deduction of dues, if any, when the student leaves the Institution after completing the Course.

4.1.5.3 Fee Refund policy on discontinuation of the course

- A student who discontinues the course after admission but before the commencement of the course, will not be entitled for refund of the fee paid and deposits made to the Institution **unless the seat that has fallen vacant due to the discontinuation, is filled up by another candidate.** If the vacated seat is filled up, the fee will be refunded. after deduction of Rs.10,000/-.
- If a student discontinues the course during the course period for any reason, he/she will have to refund the entire stipend paid by the Institution up to the time of discontinuing, pay the fee for the remaining period of the course, and shall also forfeit all the deposits and other fees paid to the Institution.

4.2 PROCEDURE FOR APPLICATION, COUNSELLING AND ADMISSION FOR MEDICAL SUPER SPECIALTY COURSES (DNB) AT ST. JOHN'S MEDICAL COLLEGE, BENGALURU FOR THE ACADEMIC YEAR 2021-2022

4.2.1. GENERAL INFORMATION

- St. John's Medical College is recognized by the National Board of Examinations (NBE) for the following 3 year Super Specialty (DNB) courses. The courses and the number of seats available in each of these are listed in **section 4.2.2**

4.2.2. SUPER SPECIALTY COURSES (3 YEARS) AND ELIGIBILITY (as per NBE)

Name of the course	No of Seats	Prior Requirement - The following degree/s or the equivalent (DNB)
DNB-Rheumatology	2	MD/DNB in General Medicine / Pediatrics
DNB-Pediatric Intensive Care	2	MD/DNB Pediatrics
FNB-Pediatric Hemato oncology (2 Years Course)	1	MD/DNB Pediatrics

4.2.3 APPLICATION AND ADMISSION PROCESS

- Admission to the above DNB courses is conducted by MCC/DNBE on the basis of NEET Super specialty as per prescribed guidelines. For further details please refer NBE website <https://nbe.edu.in> or natboard.edu.in

4.2.4. FEE FOR THE DNB COURSES

- As per NBE Guidelines

4.3 STIPEND

Super-specialty students (Senior Residents) will receive a stipend of Rs.55,000/- per month in the first year, Rs.60,000/- in the second year and Rs.65,000 in the third year.

4.4 HOSTEL

The College provides Hostel Accommodation for the students at additional fees.

4.5 DUTIES AND RESPONSIBILITIES

Duties and responsibilities of the PG students will be determined by the Dean and the RGUHS guidelines from time to time. They will be required to perform such work as may be needed in the legitimate interest of patient care, research, teaching, etc., as decided by the Dean and the Head of the Department.

5. POST DOCTORAL FELLOWSHIP AND CERTIFICATE COURSES

5.1 PROCEDURE FOR APPLICATION AND ADMISSIONS FOR POST DOCTORAL FELLOWSHIP COURSES AT ST. JOHN'S MEDICAL COLLEGE, BENGALURU FOR THE ACADEMIC YEAR 2021-22

5.1.1 GENERAL INFORMATION:

St. John's Medical College offers the following Post-doctoral 1 to 2 year fellowship and certificate courses.

Sl. No.	Name of the course	Affiliated to	Eligibility	Course duration In months	Annual intake
Paediatric Fellowships					
01.	Fellowship in Perinatal Medicine (Neonatology)	RGUHS	MD/DNB Paed/DCH	18	4
02.	Fellowship in Paediatric Nephrology	RGUHS	MD/DNB Paed/DCH	12	4
03.	Fellowship in Paediatric Intensive Care	RGUHS	MD/DNB Paed/DCH	12	4
04.	Indian Diploma in Pediatric Critical Care Medicine (IDPCCM)	IAP Intensive Care Chapter College of Pediatric Critical Care	MD/DNB Paed /DCH	12	2
05.	IAP Fellowship in Behavioural Developmental & Paediatrics	Indian Academy of Pediatrics-IAP Chapter of Neuro Developmental Pediatrics	MD/DNB Paed/DCH	12	1
06.	IAP Fellowship in Paediatric Hematology-Oncology	Indian Academy of Pediatrics(IAP) Hematology-Oncology Chap.	MD/DNB Paed/DCH	24	1
Dermatology					
07.	Fellowship in Dermato-Surgery	RGUHS	MD/DNB Dermat/DVD	12	4
08.	Fellowship in Paediatric Dermatology	RGUHS	MD/DNB Dermat/DVD	12	4
Psychiatry					
09.	Fellowship in Child Psychiatry	RGUHS	MD/DNB Psych/DPM	12	4
10.	Fellowship in Consultation Liaison Psychiatry	St. John's National Academy of Health Sciences	MD/DNB Psychiatry	12	2

Orthopaedics					
11.	Fellowship in Sports injury & Arthroscopy	RGUHS	MD/DNB Ortho / D Ortho	18	4
Critical Care					
12.	Indian Diploma in Critical Care Medicine	Indian Society of Critical Care Medicine	MD/DNB Med/ Anaesth/DA	1 year for Degree 2 years for Diploma	2
13.	Indian Fellowship in Critical Care Medicine	Indian Society of Critical Care Medicine	MD/DNB Med/ Anaesth	12	2
Pathology					
14.	Fellowship in Paediatric Pathology	Organisation of Indian College of Pathologists	MD/DNB Pathology	12	1
Family Medicine					
15.	Fellowship in Family Medicine (FFM) – Distance Education	St. John's National Academy of Health Sciences	MBBS after completion of Internship	12	30
Cardiology					
16.	Post Doctoral Course in Clinical Cardiology & Echocardiography	St. John's National Academy of Health Sciences	MD/DNB Medicine	12	4
17.	Certificate course in Clinical Cardiology	St. John's National Academy of Health Sciences	MBBS	24	4
Emergency Medicine					
18.	Certificate course in Emergency Medicine	St. John's National Academy of Health Sciences	MBBS	12	2
Radiology					
19.	Fellowship in Interventional Radiology	St. John's National Academy of Health Sciences	MD/DNB Radiology	12	2

5.1.2 APPLICATION PROCESS

- The postdoctoral fellowship and certificate courses will be announced on the St. John's website and through RGUHS/the respective National bodies under which the courses are affiliated.
- The admission to the RGUHS affiliated courses will be held in June/July 2021

ALLIED HEALTH SCIENCE COURSES

- Applications for admissions is online. The details of the application process and the link will be provided on the St. Johns website (www.stjohns.in). For any queries regarding fellowship please email sjmc.admission@stjohns.in.

5.1.3 DOCUMENTS TO BE SUBMITTED AT THE TIME OF ADMISSION

1. MBBS and PG Degree / Diploma Certificate
2. MBBS and PG marks cards
3. Internship Completion Certificate
4. State Medical Council Registration
5. Conduct Certificates/Testimonials from the previous Institute where the candidate has worked or from the Institute where PG was completed.
6. Proof of work experience

5.1.4 STIPEND

- Rs.25,000/- to Rs. 37,000/- (The exact stipend amount varies as per the fellowship course)

5.1.5 HOSTEL ACCOMODATION

- Will be provided subject to availability

5.1.6 DUTIES AND RESPONSIBILITIES

Duties and responsibilities of the Fellowship course students will be determined by the Dean and the guidelines University/National body to which the course is affiliated. They will be required to perform such work as may be needed in the legitimate interest of patient care, research, teaching etc., as decided by the Dean and the Head of the Department

* * * * *



6. ALLIED HEALTH SCIENCES

PROCEDURE FOR APPLICATION, SELECTION AND ADMISSION FOR ALL COURSES

This section carries general information for admission to all the Allied Health Science (AHS) and Health Administration courses. The course specific details are available under the specific sections listed below.

SECTION 7 – BACHELOR DEGREE

- B.Sc. and BPT

SECTION 8 – POSTGRADUATE DEGREE PROGRAMME (M.Sc.& MPT)

- M.Sc. Medical Laboratory Technology (M.Sc. MLT)
- Master of Physiotherapy (MPT)

SECTION 9

- Postgraduate programmes in Hospital Administration (MHA and DHA)

6.1 AHS COURSE DETAILS

GRADUATE COURSES				
List of courses available	No. of seats		Course duration	Internship duration
	Regular	Lateral entry		
I Bachelor of Physiotherapy	40	4	4 years	6 Months
II. B.Sc. Courses			Course Duration	
1. B.Sc. Medical Laboratory Technology (MLT)	20	2	4 years (including 1 year internship)	
2. B.Sc. Medical Imaging Technology (MIT)	20	2		
3. B.Sc. Renal Dialysis Technology (RDT)	20	2		
4. B.Sc. Perfusion Technology (PT)	05	-		
5. B.Sc. Anesthesia Operation Theatre Technology (AOTT)	20	2		
6. B.Sc. Radiotherapy Technology (RT)	10	1		

POST GRADUATE COURSES			
List of courses available	No. of seats	Course Duration	
I. M. Sc. Medical Laboratory Technology (M.Sc. MLT)			
• Clinical Biochemistry	10	2 years	
• Microbiology & Immunology	10	2 years	
• Haematology & Blood Transfusion	10	2 years	
II. Master of Physiotherapy			
• Musculoskeletal Disorders and Sports (MPT-MSK)	10	2 years	
• Cardio-vascular & Pulmonary Sciences (MPT-CVP)			
• Paediatrics (MPT-Ped)			
• Community Physiotherapy (MPT-Com)			
IV. Hospital Administration	No. of Seats	Course Duration	Intern-ship
a. Master of Hospital Administration (MHA)	30	2 years	1 month (Integrated)
b. Diploma in Hospital Administration (DHA)	30	11 months	1 month (Mission Hospital Posting)

- All courses except DHA are affiliated to Rajiv Gandhi University of Health Sciences, Bengaluru
- The DHA certificate is issued by St. John's National Academy of Health Sciences, Bengaluru
- Please note that all the Allied Health Science courses are subject to the rules and regulations of the College and Hospital.

6.2 APPLICATION CALENDAR FOR ALLIED HEALTH SCIENCE COURSES: 2021-22

S.N.	Courses	Online Application Open Date on St. John's Website	Application Close Date
1.	Bachelor of Physiotherapy (including Post-diploma Lateral Entry)	7 June 2021 - Monday	31 st July 2021- Saturday
2.	B.Sc. Courses (3 year) in MLT, MIT, RDT, PT, RT, AOTT	7 June 2021 - Monday	31 st July 2021- Saturday
3.	B.Sc. Courses Lateral Entry to 2 nd Year (2year post diploma) in MLT, MIT, RDT, RT & AOTT.	7 June 2021 - Monday	31 st July 2021- Saturday
4.	MHA, MPT, M.Sc. MLT	7 June 2021 - Monday	31 st July 2021- Saturday
5.	DHA	7 June 2021 - Monday	31 st July 2021- Saturday

PLEASE NOTE: The selection process for the academic year 2021-22 will be as per Institutional and University policies and based on the marks obtained by the candidates on the available relevant qualifying exams (Standard X and Standard XII for graduate courses and previous degree courses for the Masters' programmes). Selection for the Masters' programmes will include an online interview, the dates of which will be intimated later.

6.3. APPLICATION PROCEDURE FOR ALL AHS COURSES (B.Sc., BPT, M.Sc.MLT, MPT, MHA & DHA)

6.3.1 GENERAL INSTRUCTIONS

- Application forms for Registration for Allied Health Science courses will be available online ONLY at <http://stjohnsadmissions.in> OR on the Institutional website www.stjohns.in.
- The last date for online submission of graduate programme application form - on or before 31st July 2021, 11.59 pm. After 12.00 am onwards the application forms will not be accessible on the website. The last date for the Postgraduate programme is on or before 31st July 2021

6.3.2 APPLICATION FEE (for all courses)

Application fee once paid is non-refundable under any circumstances.

- Application fee and application forms for Bachelor of Physiotherapy (BPT) and B.Sc. Courses are separate. Hence candidates applying for both courses need to fill in both forms separately with the separate fee.
- Lateral entry** to 2nd year (post diploma) candidates for all Lateral Entry courses have to fill a separate lateral entry application form.

Application fee chart

Courses	Application fee in Rupees
All B.Sc. courses (MLT, MIT, RDT, PT, AOTT, RT)	700
Lateral entry for BPT and B.Sc. courses in MLT, MIT, RDT, AOTT RT	700
Bachelor of Physiotherapy (BPT)	1000
M.Sc. MLT (Clinical Biochemistry/Microbiology and Immunology/ Haematology and Blood Transfusion)	1000
Master of Physiotherapy (MPT-MSK/CVP/Ped/Com)	1000
Master of Hospital Administration (MHA)	1000
Diploma in Hospital Administration (DHA)	800

6.3.3 INSTRUCTIONS FOR FILLING THE ONLINE APPLICATION FORM (for all courses)

- Detailed Instructions with screen capture images are available in the user manual on the website. Please read the instructions before registering and filling the Online Application Form.

Pre-requisites for filling the online application form:

- It is the responsibility of the candidate to read the prospectus and instructions provided on the Institutional website and to ensure completeness of the application forms. Incomplete forms will be rejected.
- **A valid E-mail ID and Mobile Number** is mandatory for the submission of the Online Application form. This E-Mail ID and Mobile number should be active till the declaration of results. The Admission section will use the registered E-Mail ID/Mobile number for communication.
- **Please Note:** After the final online submission, the particulars mentioned in the online application form will be considered as **Final**. NO further modifications will be allowed & NO correspondence regarding change of details will be entertained. Candidates are hence requested to fill in the online application form with utmost care.

Registration process to be done prior to filling the application form:

- For registration, candidates are first required to click the Online Application Link under the Allied Health Sciences tab on the Institution admission website www.stjohns.in or <http://stjohnsadmissions.in>.
- The registration form will popup.
- Fill up the registration form with the required information.
- Once you submit the above information, USER ID (registered email) and PASSWORD will be sent to your registered Email ID & by SMS to your registered mobile number.

Steps for submitting the online application form (in summary)

- Go to the Link and click on the Online Application Form Link under the Allied Health Sciences tab.
- Enter you registered User ID and password.
- Fill the online application form appropriately with accurate information
- Before submitting, check the details for completeness and accuracy.
- Upload a passport size colour photograph.

Specification for photograph: Recent colour passport-size photograph (**taken after January 2021**), in JPEG/JPG format with good clarity 150*200 pixels and not exceeding 340 kb.

- After filling the application form, marks cards of the previous examinations have to be uploaded.

Graduate course applicants need to upload SSLC, I PUC and II PUC (If completed) marks cards.

Post graduate course applicants need to upload Bachelor course marks card of all years of study (1st, 2nd and 3rdyear/4th year/5th year (if completed).

- Make the ONLINE PAYMENT using any one of the methods provided - credit card / debit card or Net Banking. NO OTHER PAYMENT MODE WILL BE ACCEPTED.
- **Once the transaction has been completed, go back to the application form and review all the filled in details and edit if required. When the application is completed, click confirmed to finish the application process.**
- The applicant can now download the application form and the payment receipt. The student will also be able to view the application number on the completed form. Please note the application number and use it in case of any correspondence with the admission office.
- A confirmatory SMS and email will be sent to the applicant at the registered Email ID/ mobile number.
- After the final submission, the Admissions' Office will check and approve the application form. This may take approximately up to a week.
- After approval the candidate will receive an SMS/Email confirmation.

Note: -

- Kindly quote User ID (registered email id) and course name OR Application number and course name for any future correspondence with the Admissions' office.**
- Applications forms sent by Post or Courier will NOT be accepted.
- Errors arising out of incorrect or improper data entry will be the sole responsibility of the candidate.

- d. Contact for queries regarding online application form and related issues,
080-4946 6030/31 Monday to Friday 9.00 am to 1.00 pm & 2.00 pm to 4.30 pm & Saturday 9.00 am to 1.00 pm.
Email:admission2021@stjohns.in

6.3.4 SELECTION POLICY FOR ADMISSION

- St. John's National Academy of Health Sciences has a NO CAPITATION FEE policy. The Institute does not accept any donations as a consideration for admission.
- Canvassing in any form including recommendation letters, quoting familiarity with people or use of 'agents' to acquire admission will disqualify a candidate from the application process.
- Any **concealed/wrong information will lead to disqualification** of the candidate at any time. Where false statements in the application are discovered even after admission has been granted, the admission will be cancelled without refunding the fees.

PLEASE NOTE:

The Selection Process for Allied Health Science courses normally involves an Entrance Test and Interview. However, because of the COVID-19 Lockdown related issues, the selection process for the academic year 2021-22 will be as per Institutional and University policies and based on the marks obtained by the candidates on the available relevant qualifying exams (Standard X and Standard XII for graduate courses and previous degree courses for the Masters' programmes). Selection for the Masters' programmes will include an online interview, the dates of which will be intimated later.

1. The Admission Procedure at the Institution can be completed only after submission of II PUC/Standard XII marks card.
2. The Admission at St. John's Medical College is provisional, subject to the candidate's fulfilling the eligibility criteria as prescribed by the Rajiv Gandhi University of Health Sciences.(Refer Sections 7 to 10).
3. **Original Documents listed below AND a set of photocopies are to be submitted to the Academic Section during admission of all AHS courses**
 - a. SSLC (Std X) Pass Certificate or its equivalent.
 - b. I PUC (Std XI) or its equivalent marks card.
 - c. II PUC (Std XII) or its equivalent marks card.
 - d. Diploma marks card for lateral entry candidates only.
 - e. Letter from the Parish Priest indicating the affiliation of the candidate to the parish (for Catholics only)
 - f. SC/ST/OBC certificate from appropriate authority if relevant
 - g. Medical fitness certificate
 - h. Transfer certificate
 - i. Eligibility certificate from RGUHS (Candidates from Boards other than Karnataka PU Board and lateral entry students)
 - j. Deputation certificate (if the candidate is deputed by an organization)

- k. B.Sc. MLT marks card and Degree/Graduation certificate (for M.Sc. MLT candidates only)
- l. Bachelor degree marks card and Degree/Graduation certificate (for MHA candidate only) and Council Registration Certificate for Nursing/BDS/MBBS degree holders.
- m. Bachelor degree marks cards and internship completion certificate for MPT.
- n. Diploma/ Bachelor degree marks card/ Graduation certificate for DHA candidates.
Aadhar card photocopy and 3 recent passport size colour photographs also need to be submitted.

Any additional documents required will be notified at the time of admission.

Please note that the admission granted by the College is provisional until the above documents are submitted and the admission is approved by Rajiv Gandhi University of Health Sciences, Bengaluru.

6.4. FEE CHART FOR AHS COURSES FOR 2021

Sl. No	Courses	Fee at Admission (in Rs.)	Refundable deposits (In Rs.)	Term Fee (Tuition & other fees in Rs.)	Total College Fee in Rs.	Total Fee at admission (College & RGUHS in Rs.)	Fee to be paid from term II Onwards (in Rs)
1	B.Sc. MLT	6,075	5,000	21,925	33,000	37,100	22,700
2	B.Sc. MIT	5,900	5,000	22,500	33,400	37,500	23,200
3	B.Sc. RDT	5,900	5,000	22,000	32,900	37,000	22,700
4	B.Sc. PT	5,900	5,000	22,000	32,900	37,000	22,700
5.	B.Sc. AOTT	5,900	5,000	22,000	32,900	37,000	22,700
6.	B.Sc. RT	5,900	5,000	22,000	32,900	37,000	22,700
7	BPT	11,250	7,000	74,200	92,450	98,100	75,000
8	M.Sc. MLT*	7,375	7,000	48,575	62,950	70,000	48,000
9	MHA	9000	5,000	83,550	97,550	1,04,600	83,000
10	DHA	-	-	-	70,400	-	-
11	MPT*	7200	7,000	1,42,400	1,56,600	1,66,600	1,42,500*

*MPT & M.Sc. MLT students will receive a monthly stipend of Rs.7000/-

Note: The above fee may be subject to revision from time to time by the management and / or as per RGUHS regulation. Any change in fee structure will be intimated on the college notice board. It is the responsibility of the candidate to check the college notice board regularly.

6.4.1 GUIDELINES FOR FEE PAYMENT

- Selected candidates are required to pay the fee within the stipulated date at the time of admission, failing which the admission will stand cancelled and the vacant seat will be issued to the next candidate.

- The candidates are required to pay the prescribed term fee at the time of admission for the first term along with the admission fee. Thereafter the fee will have to be paid every six months i.e. in the months of January and July, for the subsequent academic years. Part payment of term fee will not be entertained. The prescribed fee should be paid within one month of the commencement of each term. Late payment will attract penalty which will have to be paid along with the fee.
- Examination fee as prescribed by Rajiv Gandhi University of Health Sciences and other fee, if any, will be notified at the time of admission or at the appropriate time.
- All candidates have to pay refundable deposits as specified in the fee chart which includes caution deposit, library deposit and laboratory deposit at the time of admission. The same will be refunded, when the student leaves the Institution after completion of the Course.

6.4.2 FEE REFUND POLICY ON DISCONTINUATION OF THE COURSE

A candidate who discontinues the course after the admission but before the commencement of the course, will not be entitled for refund of the fees and deposits made to the Institution, unless the seat is filled up by another candidate. If the forfeited seat is filled up, the fee will be refunded after deduction of 10% of the total fees payable as service charges.

If a candidate discontinues the course during the course period in order to join another subject elsewhere or for any other reason, he/she will have to refund the entire stipend (if any) paid by the Institution upto the time of discontinuation and further will pay the fee for the remaining period of the course to the Institution, and shall also forfeit all the deposits and other fee paid to the Institution.

7. ALLIED HEALTH SCIENCES - GRADUATE PROGRAMME

7.1 GENERAL INFORMATION AND SCOPE FOR AHS GRADUATE PROGRAMME

Allied Health Sciences (AHS) has evolved rapidly over recent decades in response to the growing need for a healthcare workforce with the capability to deliver specialized health services in a range of settings namely diagnostic, technical, therapeutic and direct patient care. These services are critical to the health care team and the patients they serve.

- The Undergraduate AHS Courses offered by St. John's Medical College (SJMC) are affiliated to Rajiv Gandhi University of Health Sciences (RGUHS), Karnataka, Bengaluru. The students shall abide by the University guidelines and Institutional policies.
- The courses offered are listed in section 6.1
- The application dates are given in section 6.2

7.2 ELIGIBILITY CRITERIA FOR ADMISSION

- Admission is open to male and female candidates.
- Age: Candidate should have completed 17 years of age at the time of admission and not crossed the age of 35 years.

• Educational qualification:

o For B.Sc.MLT, MIT, RDT, PT, AOTT & RT courses:

- A candidate should have passed the 2-year Pre-University examination conducted by the Pre-University Education Board in the State of Karnataka or any other examination considered as equivalent, by RGUHS and
- Score not less than 40% of marks in Physics, Chemistry and Biology.

o B.Sc. MIT & RT:

- Pre-University course from a recognized Board with vocational course in Radiography/Radiology as vocational subject.

o BPT Course:

- A candidate who has passed the two-year Pre-University examination conducted by Pre-University Education Board of Karnataka State with English as one of the subjects and Physics, Chemistry and Biology

OR

- A candidate who has passed Boards/Councils/Intermediate examination established by State / Central Government and recognized as equivalent to a two-year Pre-University Examination by Rajiv Gandhi University of Health Sciences/Association of Indian Universities (AIU) with English, Physics, Chemistry, Biology.

OR

- Candidates who have completed Pre-University Course with Vocational Physiotherapy and their optional subjects are eligible for admission to BPT course.

Lateral entry

B.Sc. courses (MLT, RDT, MIT, AOTT and RTT) leads to direct admission of candidates to second year. The candidates should have passed **Diploma Program from the Government Boards and recognized by RGUHS**, fulfilling the conditions specified in the ordinance of Allied Health Science Courses (Refer to RGUHS website for details). The students are eligible to take admission on lateral entry system only in the same subject studied at diploma level.

BPT course leads to direct admission of candidates to third year of the course. The candidates should have passed the **3-year Diploma in Physiotherapy with six months of Internship** and studied under a Paramedical Board recognized by RGUHS.

7.3 FEE chart, guidelines for fee payment and fee refund policies are given under section 6.4

7.4 ACCOMODATION

- Hostel facility is extended to outstation candidates, but not guaranteed since it is subject to availability.
- It is compulsory for all hostelites to be messing members
- It is mandatory for the candidates to have a local guardian to avail hostel facility. A separate local guardian form will have to be filled in at the time of admission. Continuation of stay in the hostel is dependent on the condition of satisfactory academic progress by the student. In case of continued poor progress, the students may be asked to leave the hostel.

7.5 COURSE CURRICULUM

- Course and duration for the BPT and B. Sc. courses is given in section 6.1. For details of course curriculum, syllabus and examinations, please refer to the RGUHS website at www.rguhs.ac.in

7.6 COMPULSORY INTERNSHIP: BPT & B.Sc. (MLT, MIT, RDT, PT, AOTT & RT)

- After the completion of the final year, the students have to undergo Compulsory Internship Training for a period of 6 months for BPT and 1 year for B.Sc. courses for the issue of degree certificate. Stipend will be paid during internship for a period of 1 year. The period of internship may change as per RGUHS regulations.

NOTE:

1. The internship will start within a week of the announcement of results.
2. Additional posting will be carried out by the student if internship is not started on the stipulated day and the stipend will not be paid during this period. The period of additional posting is at the discretion of the college.
3. Students will not be awarded degree certificate without successfully completing the internship.

7.7 ATTENDANCE:

- Minimum 80% in main subjects separately for theory, practical, and hospital postings in each academic year
- Minimum 80% in subsidiary subjects.
- Attendance is mandatory for official campus events, value education activities, annual retreat/motivational programmes and value orientation programme, medical ethics, community health service programmes arranged by College/Hospital, group activities of students and meetings called by the Management.

7.8 INTERNAL ASSESSMENT (IA)

- There will be three periodical tests in each subject in an academic year and the average marks of best two IA exams will be taken as the final IA marks in that subject. Attending all the three tests is compulsory.
- Internal assessment marks as eligibility criteria for the university exam is different for different courses. Please refer to the RGUHS website www.rguhs.ac.in for details

7.9 UNIVERSITY EXAMINATION

- The examination will be held at the end of each academic year, during Aug/Sep. A supplementary examination also will be held in the middle of each academic year during March/April.

Criteria for Pass

- **B.Sc. Main Subjects:** 50% aggregate in theory and practical separately (i.e., 50% in the University conducted written examination and 50% aggregate i.e., marks of University conducted written examination, and internal assessment added together.)
- **BPT Main subject:** 50% of marks in theory and practical separately
(For theory 50% marks calculation - Theory internal assessment marks + University conducted written and viva vice examination.
For 50% in practical calculation - The practical internal assessment marks + University conducted practical examination)
- **Subsidiary Subjects:** The minimum prescribed marks for a pass in a subsidiary subject shall be 35% of the maximum marks prescribed for a subject.

8. POSTGRADUATE PROGRAMMES IN ALLIED HEALTH SCIENCES AND PHYSIOTHERAPY

- **MEDICAL LABORATORY TECHNOLOGY (M.Sc. MLT)**
- **MASTER OF PHYSIOTHERAPY (MPT)**

8.1 M.Sc. MLT

8.1.1 GENERAL INFORMATION AND SCOPE

- The M.Sc. Medical Laboratory Technology are of two years duration affiliated to RGUHS.
- The course is designed to enable the student to specialize and acquire greater knowledge and understanding in the fields of laboratory sciences in order to function efficiently and effectively. This course also opens up avenues for the student in the areas of Research, Training and Teaching. In addition, it provides a foundation for a doctoral programme.
- The students shall abide by the University guidelines and Institutional policies.
- The M.Sc. MLT course at St. John's Medical College, Bengaluru, offers 3 sub-specialities.
 - M.Sc. MLT Microbiology & Immunology
 - M.Sc. MLT Clinical Biochemistry
 - M.Sc. MLT Haematology & Blood Transfusion

8.1.2 ELIGIBILITY

M.Sc. MLT:

- A pass in B.Sc. MLT course from an institution affiliated to RGUHS, or from any other university considered as equivalent by RGUHS
- A candidate who has completed B.Sc. in Clinical Biochemistry/Medical Biochemistry OR B.Sc. in Clinical Microbiology/Medical Microbiology are eligible to join M.Sc. MLT in Clinical Biochemistry & M.Sc. MLT in Microbiology & Immunology respectively.
- Candidates passing B.Sc. MLT through correspondence or distance education shall not be eligible.

NOTE: For details of application procedure & interview, selection and admission of students refer to section 6

FEE CHART, guidelines for fee payment and fee refund policy are given under Section 6.4

STIPEND: M.Sc. MLT students will receive a stipend of Rs.7000/- per month

8.1.3 ACCOMODATION

- Hostel facility is extended to outstation candidates, but not guaranteed since it **is subject to availability.**
- It is compulsory for all hostelites to be messing members
- It is mandatory for the candidates to have a local guardian to avail hostel facility. A separate local guardian form has to be filled up the time of admission. Continuation of stay in hostel is dependent on the condition of satisfactory academic progress by the

student. **In case of continued poor progress, the students may be asked to leave the hostel.**

8.1.4 COURSE CURRICULUM

- M.Sc. MLT are 2- year courses. For details of course curriculum, syllabus and examinations please refer to the RGUHS website www.rguhs.ac.in.

8.1.5 ATTENDANCE

- Students pursuing the degree courses need to be with the concerned department for the entire duration of the course as full-time student.
- Minimum 80% attendance in main subjects separately for Theory, Practical and Hospital postings in each academic year.
- Minimum 80% attendance in subsidiary subjects
- Attendance is mandatory for official campus events, value education activities, annual retreat, Medical Ethics, community health service programmes arranged by College/ Hospital, group activities of students and meetings called by the Management.

8.1.6 INTERNAL ASSESSMENT (IA)

- There will be three periodical tests in each subject in an academic year and the average marks of best two IA exams will be taken as the final marks in that subject. Attending all the three tests is compulsory.
- IA marks as eligibility criteria to be eligible for university exam is 50% in theory and 50% in practical exams.

8.1.7 UNIVERSITY EXAMINATION

- The examination will be held at the end of each academic year of the course during Sept/Oct. A supplementary examination also will be held in the middle of each academic year during April/May.

Criteria for Pass

M.Sc. MLT

- **Main Subjects:**
Theory–Minimum 50% marks in each paper
Practical–Minimum 40% in Practical alone &50% aggregate (Practical & Vice versa)
- **Subsidiary Subjects:**
M.Sc. MLT: The minimum prescribed marks for a pass in a subsidiary subject shall be 35% of the maximum marks prescribed for a subject.

Maximum duration for completion of course:

- **M.Sc. MLT:** A candidate shall complete the course within 4 years from date of admission, failing which the candidate will be disqualified. A maximum of 4 attempts is permitted.

8.2 MASTER OF PHYSIOTHERAPY (MPT)

8.2.1 GENERAL INFORMATION AND SCOPE

The Master's Degree in Physiotherapy is a two-year program consisting of classroom teaching, self-directed learning, academic activities and clinical posting. In the first-year theoretical basis of physiotherapy is refreshed along with research methodology and biostatistics. The students are rotated in all areas of clinical expertise during this period. They are required to choose their study for dissertation and submit a synopsis. During the second year the students will be posted in their area of specialty. They are required to complete and submit their dissertation. The learning program includes seminars, journal reviews, case presentations, case discussions and classroom teaching. External clinical postings at other reputed centres in the country are also included in order to offer a wider spectrum of experience. The students are encouraged to attend conferences/workshops to enhance their knowledge during the course of study. University examinations are held at the end of second year. **The students shall abide by the university guidelines and Institutional policies.**

Electives Offered are:

- Master of Physiotherapy in Musculoskeletal Disorders and Sports (MPT-MKS)
- Master of Physiotherapy in Cardio-vascular & Pulmonary Sciences (MPT-CVP)
- Master of Physiotherapy in Paediatrics (MPT-Ped.)
- Master of Physiotherapy in Community Physiotherapy (MPT-Com)

8.2.2 ELIGIBILITY

- A Pass in B.Sc. (Physiotherapy) or BPT degree from institutions where the mode of study is a full-time program, with minimum 3½ years / 4 ½ years duration from RGUHS or any other university in India or abroad considered as equivalent
- Not less than 50% of marks in aggregate.
- Should have completed 6 months of compulsory rotating internship in Physiotherapy in Colleges recognized by RGUHS – Karnataka.
- Candidates who have passed BPT through Correspondence or Distance Education program are not eligible.

NOTE: For details of application procedure, entrance test & interview, selection and admission of students refer to section 6.

8.2.3 FEE CHART, guidelines for fee payment and fee refund policy are given under section 6.4.

8.2.4 STIPEND: MPT students will receive a stipend of Rs.7000/- per month

8.2.5 ACCOMODATION

- Hostel facility is extended to outstation candidates **subject to availability**, but not guaranteed.
- It is compulsory for all hostelites to be messing members.

- It is mandatory for the candidates to have a local guardian to avail hostel facility. A separate local guardian form has to be filled up the time of admission. Continuation of stay in the hostel is dependent on the condition of satisfactory academic progress by the student. **In case of continued poor progress, the students may be asked to leave the hostel**

8.2.6 COURSE CURRICULUM

DURATION OF THE COURSE

The duration of MPT course is extended over a period of two continuous years on a full-time basis. Any break in the career, will result in extension of the course and the power of refixation of the term will be vested with the University.

METHOD OF TRAINING

The training of postgraduate students for MPT degree is be on a full-time basis with graded responsibilities in the management and treatment of patients entrusted to his / her care. The participation of all the students in all facets of educational process including seminars, group discussions, clinical rounds, case demonstrations, clinics, journal review meetings & CME is essential. Students are also required to participate in the teaching and training programs of undergraduate students. Training includes involvement in laboratory experimental work and research studies.

INTERNAL MONITORING

The academic progress of students is monitored through continuous appraisal, based on participation of students in various teaching / learning activities as well as formal structured assessment.

8.2.7 ATTENDANCE

- Minimum of 80% of the total classes conducted during each academic year of the MPT course. Leave of any kind is not to be counted as part of academic term.
- A student who does not satisfy the requirement of attendance in one or more subjects will not be permitted to appear for the University Examination. He / She will be required to make up the deficit in attendance to become eligible to take subsequent examination.

8.2.8 UNIVERSITY EXAMINATION

- The University MPT Final Examination is conducted at the end of 2nd year. The student is to register for all the papers when he/she appears for the first time. If a student fails in theory and/or practical of MPT Final Examination, he/she has to reappear for all the papers of examination in both theory and practical.
- A candidate shall be declared pass if he / she secures minimum 50% of marks in theory aggregate and 50% of marks in Practical/Clinical and Viva-Voce aggregate.

9. POST GRADUATE COURSES IN HOSPITAL ADMINISTRATION

9.1 GENERAL INFORMATION AND SCOPE

The Department of Hospital Administration offers two courses:

- (A) Master of Hospital Administration and
- (B) Diploma in Hospital Administration.

The courses in Hospital Administration are designed to enable the student to develop:

- A basic understanding of the total health care delivery system, its complexities and the role of an individual Healthcare Institution as a subsystem.
- Deeper understanding of multi-disciplinary and multi-dimensional nature of health management and a basic insight into functional discipline.
- Scientific management approach and adequate managerial tools to improve managerial skills.
- Strategic thinking and critical awareness of their management style and be able to constantly weigh its appropriateness to deal with various professional groups, skilled and unskilled staff, patient and their families and members of the community.
- Quality orientation and commitment to continuous quality improvement, sensitive to the safety, needs and expectations of patients as well as community, at the same time highly cost conscious with commitment to keep service cost within the reach of the common people.

The students shall abide by the University guidelines and Institutional policies.

9.2 MASTER OF HOSPITAL ADMINISTRATION (MHA)

- Duration of the course: MHA is a two-year post graduate degree course affiliated to Rajiv Gandhi University of Health Sciences (RGUHS), Karnataka.

9.2.1 ELIGIBILITY

- Admission is open to male and female candidates.
- Age Criteria: The Candidate should have completed 19 years of age at the time of admission.
 - o Academic Eligibility: To be eligible for admission, a candidate shall have obtained a Bachelor degree with a minimum of 50% aggregate of marks in all the years of university examination. In case of SC/ST candidates the minimum marks shall be 45%.
 - o Bachelor's degree in anyone of the following from an institution affiliated to RGUHS or any other university established under law considered equivalent by RGUHS.
 - viz, MBBS, BDS, BAMS, BHMS, BPT, B.Sc. Nursing (Basic or Postbasic), B. Pharm., Hospital/Health Administration (BHA), and B.Sc. in Allied Health Sciences.

OR

- o Bachelor's degree in Arts (BA), Commerce (B. Com), Science (B.Sc.), Law (LLB), Social Work (BSW), Engineering (B.Tech/B.E) or Management (BBM/BBA) from a University established under law and recognized by the University Grants Commission.

NOTE: Application procedure and selection and admission of candidates-refer to section 6. For Fee chart, guidelines on fee payment and refund policy refer Section 6.4

9.2.2 COURSE CURRICULUM

- MHA is a two-year course which is conducted in four semesters. The course curriculum, syllabus, guidelines and examinations are conducted according to the directions given by Rajiv Gandhi University of Health Sciences, Karnataka, from time to time. RGUHS has the right to revise and modify the syllabus and guidelines anytime. For the present syllabus details please refer to the RGUHS website www.rguhs.ac.in

9.2.3 ATTENDANCE

- Every student is expected to attend all the sessions of Theory and hospital postings (practical) in each semester. The minimum required attendance to be eligible to appear for RGUHS examinations is 80% in each subject
- Attendance for hospital posting (practical) will also be recorded. Minimum of 80% attendance and 50% marks in IA are required for a student to be eligible for RGUHS theory examinations at the end of every semester.
- Attendance for official campus events, value education activities, medical ethics, community health service programmes arranged by college/hospital, group activities of students and meetings called by the management is compulsory.

9.2.4 INTERNAL ASSESSMENT (IA)

- There will be two internal assessment tests in each subject in every semester and the average marks of IA exams will be taken as the final marks in that subject. Attending both IA assessments is compulsory.
- Eligibility to write university examination: 50% in theory subjects.

9.2.5 UNIVERSITY EXAMINATION

- The examination will be held at the end of each semester of the course during March/April and Sept/Oct as decided by RGUHS.

Maximum duration for completion of the course:

- A candidate shall complete the course within 6 years from the date of admission with a maximum of 4 attempts/subject, failing which the candidate will be discharged. (Subject to RGUHS guidelines).

Criteria for pass

Main Subjects:

Semester I, II & III – Minimum 50% in each paper aggregate in the written exam conducted by RGUHS.

Semester IV- In addition to the above candidates should score 50% of marks in Viva & Practical.

Subsidiary Subjects: The minimum prescribed marks for a pass in a subsidiary subject shall be 35% of the maximum marks prescribed for a subject.

9.3 DIPLOMA IN HOSPITAL ADMINISTRATION (DHA)

9.3.1 DURATION OF THE COURSE:

- DHA is a one-year course inclusive of one-month internship, conducted by Department of MHA and is approved by St. John's National Academy of Health Sciences, Bengaluru.

9.3.2 ELIGIBILITY FOR ADMISSION

- Admission is open to all candidates who are professed members of Catholic Religious Orders.
- Age: Candidate must be above the age of 19 years at the time of admission.
- Academic eligibility for admission: Candidate should have obtained a basic degree or diploma. General Comprehension and fluency in English language are expected from all candidates.
- Special consideration will be given to alumni of St. John's Medical College, Bengaluru, who have served in medically under-served areas and with underprivileged people, recognized as such by the College.

NOTE: **Application procedure, selection and admission of candidates - refer to section 6. For Fee details refer section 6.4.**

9.3.3 COURSE CURRICULUM

- DHA course will be conducted through class room teaching (including case studies, assignments, discussions, seminars etc), self-directed reading and guided learning. The students will also get practical orientation in the various departments and facilities of St. John's Medical College Hospital, Bengaluru. Field visits, exposure training in various healthcare settings and participation in national level conferences are also requirements for the completion of the course.
- **Subjects include:**
 1. Fundamentals of Management, Organizational Behaviour and Organization Development.
 2. Accounting, Hospital Finance Management and Project Management.
 3. Hospital Planning and Facilities Management.
 4. Quality Management in Healthcare, Healthcare Ethics and Legal Aspects.
 5. Management of Not-for-Profit Hospitals and Community Health Services.
 6. Human Resource Management and Labour Relations.

9.3.4 ASSESSMENT AND EXAMINATION

- Evaluation of the performance of each student will be carried out by the Department of Hospital Administration. Assessments may be done in the form of written examination, assignment, viva-voce or presentation.
- A certificate titled "Diploma in Hospital Administration, Department of Hospital Administration, St. John's National Academy of Health Sciences" will be awarded to those students who secure a minimum of grade "C" or above in all the subjects of the Course and Project study.
- If a student gets a failing grade (D) in more than two subjects, instead of the above said certificate, only a 'Course Completion Certificate' shall be awarded to the candidate.
- The student will be given one more opportunity in the following session to repeat and improve on deficient subjects. Only on successful completion of deficient subjects, the Diploma Certificate shall be awarded.

10. DOCTORAL (Ph.D) PROGRAMME

St. Johns Medical College offers PhD programmes affiliated to the Rajiv Gandhi University of Health Sciences in the following subjects:

Anatomy	Anaesthesia
Physiology	Medicine
Biochemistry	Paediatric Nephrology
Microbiology	Psychiatry
Pathology	Molecular Medicine
Community Medicine	
Pharmacology	

For details of guides and department refer St. John website (www.stjohns.in), select admission → courses → Ph.D.

Interested candidates may contact the Dean/Head of the concerned subject for further details or email : sjmc.admission@stjohns.in

FACULTY PROFILE



ST. JOHN'S MEDICAL COLLEGE, BANGALORE
BENGALURU - 560 034

DIRECTOR

Rev. Dr. PAUL PARATHAZHAM
L.Ph., L.Th., M.A., Ph.D (USA)

DEAN

DR. GEORGE D'SOUZA, MD, DNB

ASSOCIATE DIRECTOR - COLLEGE

Rev. Dr. J. CHARLES DAVIS, Ph.D &
HABILITATION (BIO ETHICS, GERMANY)

VICE DEANS

DR. ANURADHA ANANTHAMURTHY, MD (UG)

DR. JOHN STEPHEN, MD, DNB (PG)

DR. MARY DIAS, MD (AHS)

DR. BOBBY JOSEPH, MD, DNB (CODE)

REGISTRAR

DR. MARJORIE M.A. CORREA, MD

LIST OF TEACHING STAFF as on October 2021

S.NO	NAME	QUALIFICATION	DESIGNATION
ANAESTHESIA			
1	DR. BINDU GEORGE	MBBS, DA, MD	PROFESSOR & HEAD
2	DR. SATHYANARAYANA P.S	MBBS, MD, DNB, PDCC	PROFESSOR
3	DR. SAVITHA K S	MBBS, MD, Ph.D	PROFESSOR
4	DR. MOSES CHARLES D'SOUZA	MBBS, MD	PROFESSOR
5	DR. REENA NAYAR	MBBS, MD	PROFESSOR
6	DR. MANJULADEVI. M	MBBS, DA, DNB	PROFESSOR
7	DR. SURBHI GUPTA	MBBS, MD	ASSOCIATE PROFESSOR
8	DR. VIKRAM SHIVAPPAGOUNDAR.M	MBBS, MD	ASSOCIATE PROFESSOR
9	DR. KARTHIK JAIN M	MBBS, MD	ASSOCIATE PROFESSOR
10	DR. NISCHALA DIXIT	MBBS, DA, DNB, MRCA	ASSOCIATE PROFESSOR
11	DR. APOORWA KOTHARI	MBBS, MD	ASSOCIATE PROFESSOR
12	DR. DEEPA BHASKARAN	MBBS, DA, DNB	ASSOCIATE PROFESSOR
13	DR. RASHMI RANI	MBBS, MD (Physiology), DNB	ASSOCIATE PROFESSOR
14	DR. ARPANA KEDLAYA	MBBS, DA, DNB	ASSOCIATE PROFESSOR
15	DR. SUREKHA G	MBBS, MD	ASSISTANT PROFESSOR
16	DR. SHILPA J	MBBS, DNB	ASSISTANT PROFESSOR
17	DR. USHA R SASTRY	MBBS, DA, DNB	ASSISTANT PROFESSOR
18	DR. SHILPA BHIMASEN JOSHI	MBBS, DNB	ASSISTANT PROFESSOR
19	DR. ANJALI TERESA MATHEW OLLAPALLY	MBBS, MD	ASSISTANT PROFESSOR
20	DR. THOMAS T. VELLAPALLY	MBBS, MD, DNB	ASSISTANT PROFESSOR
21	DR. NAYANTHARA J	MBBS, MD	ASSISTANT PROFESSOR
22	DR. SOWMYA SRI V	MBBS, DNB	SENIOR RESIDENT
23	DR. SARA JAISON	MBBS, MD	SENIOR RESIDENT
24	DR. PUSPANJALI JENA	MBBS, DNB	SENIOR RESIDENT
25	DR. VENKATESH	MBBS, DA, DNB	SENIOR RESIDENT
26	DR. GIFTY SUSAN PHILIP	MBBS, DNB	SENIOR RESIDENT
27	DR. P. USHANANDINI	MBBS, MD	SENIOR RESIDENT
28	DR. T. SINDUJA	MBBS, DA, DNB	SENIOR RESIDENT
29	DR. SOUMYA G	MBBS, MD	SENIOR RESIDENT

30	DR. DESHIKAR L N	MBBS, DA, FICM, IDCCM	JR. CONSULTANT (Level of Asst Prof)
31	DR. SRUTHI SREEDHARAN	MBBS, DNB	SENIOR RESIDENT
32	DR. RADHIKA R	MBBS, MD	SENIOR RESIDENT
33	DR. ARUN GEORGE A	MBBS, MD	SENIOR RESIDENT
34	DR. TEJAL RAMCHANDRANATEKAR	MBBS, MD	SENIOR RESIDENT
35	DR. FLORENCE SEQUEIRA	MBBS, DA, DNB	SENIOR RESIDENT
36	DR. ATHMIKA	MBBS, MD	SENIOR RESIDENT
37	DR. SURAJ LIONEL PINTO	MBBS, MD	SENIOR RESIDENT
38	DR. TWINKLE JOHNY	MBBS, MD	SENIOR RESIDENT

ANATOMY

1	DR. YOGITHA RAVINDRANATH	MBBS, MD	PROFESSOR & HEAD
2	DR. BALASUBRAMANYAM V	MBBS, MS	PROFESSOR
3	DR. NACHIKET SHANKAR	MBBS, MS	PROFESSOR
4	DR. STEPHEN DAYAL S	MBBS, MD	ASSOCIATE PROFESSOR
5	DR. LAKSHMI T A	MBBS, MD	ASSOCIATE PROFESSOR
6	DR. SMITHA JSM	M.Sc, Ph.D	ASSISTANT PROFESSOR
7	DR. AZRA JABEEN	MBBS, MD	ASSISTANT PROFESSOR
8	DR. ANJALI S	MBBS, MD	ASSISTANT PROFESSOR
9	DR. SUJATHA NARAYANAN	MBBS, MD	TUTOR
10	DR. CHITRA N	MBBS, MD	TUTOR
11	DR. GADADE VARSHA GOVINDRAO	MBBS, MD	TUTOR
12	DR. SHALLU GARG	M.Sc, Ph.D	TUTOR
13	MR. RAMESH P	M.Sc	TUTOR

DIVISION OF HUMAN GENETICS

1	DR. VERONICA PREETHA TILAK	MBBS	JUNIOR CONSULTANT INCHARGE DIVISION OF HUMAN GENETICS
2	DR AMUDHA S	M.Sc Ph.D (Genetics)	TUTOR

BIOCHEMISTRY

1	DR. ANITA R. BIJOOR	MBBS, MD, Ph.D	PROFESSOR & HEAD
2	DR. ANITA DEVANATH	MBBS, MD, DNBE	PROFESSOR
3	DR. GERALDINE MENEZES	M.Sc, Ph.D	PROFESSOR
4	DR. JAYAKUMARI S	MBBS, MD	PROFESSOR
5	DR. VINOD GEORGE THYKADAVIL	M.Sc, Ph.D	PROFESSOR
6	DR. SHUBHA N PRAKASH	MBBS, MD	ASSOCIATE PROFESSOR
7	DR. JYOTHI D N	MBBS, MD	ASSISTANT PROFESSOR
8	MRS. ANU MALIYAKAL	M.Sc	TUTOR - AHS
9	DR. JIKKU TERESA P	MBBS, MD	TUTOR

BIOSTATISTICS

1	DR. TINKU THOMAS	M.Sc, Ph.D	PROFESSOR & HEAD
2	DR. SANTU GHOSH	M.Sc, Ph.D	ASSISTANT PROFESSOR
3	MR. JOHN MICHAEL RAJ A	M.Sc	LECTURER

CARDIOTHORACIC AND VASCULAR SURGERY

1	DR. SREEKAR BALASUNDARAM	MBBS, MS, DNB (Gen. Surgery), DNB (CTH), FIACS	PROFESSOR & HEAD
---	--------------------------	---	------------------

2	DR. DEEPAK GOWDA	MBBS, DNB, MNAMS	ASSISTANT PROFESSOR
3	DR. K.N.SRINIVASAN	MBBS, MS, M.CH, FIACS	SENIOR CONSULTANT

CARDIOLOGY

1	DR. KIRON VARGHESE	MBBS, MD, DM, FACC	PROFESSOR & HEAD
2	DR. SRILAKSHMI M A	MBBS, DNB (Med), DNB Cardio	PROFESSOR
3	DR. SUNIL ABHISHEK B	MBBS, MD, DM	ASSOCIATE PROFESSOR
4	DR. SHWETA AGRAWAL	MBBS, MD, DM	ASSISTANT PROFESSOR

COMMUNITY MEDICINE

1	DR. BOBBY JOSEPH	MBBS, MD, DNB, PGDGM	PROFESSOR & HEAD
2	DR. ARVIND KASTURI	MBBS, MD, DNB, PGDGM	PROFESSOR
3	DR. B RAMAKRISHNA GOUD	MBBS, MD, MBA, M.Sc (PSY)	PROFESSOR
4	DR. SULEKHA T	MBBS MD (PSM)	PROFESSOR
5	DR. NAVEEN RAMESH	MBBS, MD	ASSOCIATE PROFESSOR
6	DR. DEEPTHI SHANBHAG	MBBS, MD	ASSOCIATE PROFESSOR
7	DR. PRETESH ROHAN KIRAN	MBBS, MD, DGM	ASSOCIATE PROFESSOR
8	DR. RASHMI RODRIGUES	MBBS, MD, Ph.D	ASSOCIATE PROFESSOR
9	DR. TWINKLE AGRAWAL	MBBS, MD	ASSOCIATE PROFESSOR
10	DR. FARAH NAAZ FATHIMA	MBBS, MD, DNB, PGDHHM	ASSOCIATE PROFESSOR
11	DR. AVITA ROSE JOHNSON	MBBS, MD, DNB, PGDMLE	ASSOCIATE PROFESSOR
12	DR. NANCY ANGELINE G	MBBS, MD, DTM & H	TUTOR
13	DR. MERLYN JOSEPH	MBBS, MD, DNB	TUTOR

CLINICAL IMMUNOLOGY & RHEUMATOLOGY

1	DR. VINEETA SHOBHA	MBBS, MD, DM	PROFESSOR & HEAD
2	DR. RAMYA J	MBBS, MD, PDF	ASSOCIATE PROFESSOR

CRITICAL CARE MEDICINE

1	DR. BHUVANA KRISHNA	MBBS, MD, IDCCM, IFCCM	PROFESSOR & HEAD
2	DR. AMARJA. A. HAVALDAR	MBBS, MD, DNB, FNB, EDIC, DM, PDF (Neuro Anaes)	ASSOCIATE PROFESSOR
3	DR. NATESH PRABU. R	MBBS, MD, DNB, EDIC, DM	ASSOCIATE PROFESSOR
4	DR. CAROL D SILVA	MBBS, MD, FNB, EDIC	ASSOCIATE PROFESSOR
5	DR. SHIVAKUMAR. N	MBBS, MD, DM, DNB, EDIC	ASSISTANT PROFESSOR
6	DR. DIPALI T	MBBS, MD, DM	ASSISTANT PROFESSOR
7	DR. GAUTHAM M RAJU	MBBS, MD, FNB	ASSISTANT PROFESSOR
8	DR. MANU SAM MATHEW	MBBS, MD	SENIOR RESIDENT
9	DR. PRUDHIVI DASARI	MBBS, MD, DNB	SENIOR RESIDENT
10	DR. FRANCIS J KATTADY	MBBS, MD	SENIOR RESIDENT
11	DR. ROSHAN JOSEPH FERNANDES	MBBS, MD, DA	SENIOR RESIDENT
12	DR. ASHWINI A KUNDAR	MBBS, MD	SENIOR RESIDENT
13	DR. BRUNDA S	MBBS, DNB	SENIOR RESIDENT
14	DR. JEROME S A NELSON	MBBS, MD	SENIOR RESIDENT
15	DR. VERONICA	MBBS, MD	SENIOR RESIDENT
16	DR. ROHIT G DUDDAGI	MBBS, MD	SENIOR RESIDENT
17	DR. NIKHIL JOSEY	MBBS, MD	SENIOR RESIDENT
18	DR. ANIE JOSEPH	MBBS, MD	SENIOR RESIDENT

DENTAL SURGERY

1	DR. PURUSHOTHAM MANVI	MDS, Prosthodontics	PROFESSOR & HEAD
2	DR. GEETA KALE	MDS, Periodontics	PROFESSOR
3	DR. C. S. NITHYA	MDS, Oral Surgery	PROFESSOR
4	DR. HEMA AGNIHOTRI	MDS, Prosthodontics	ASSISTANT PROFESSOR
5	DR. SHINIE RAZIL GOVEAS	MDS, Pedodontics	ASSISTANT PROFESSOR
6	DR. KHALID SHERIFF	BDS	TUTOR
7	DR. ANJU ROY	BDS	TUTOR

DERMATOLOGY

1	DR. VIJAY AITHAL	MBBS, DVD, DNB	PROFESSOR & HEAD
2	DR. MARY AUGUSTINE	MBBS, MD	PROFESSOR
3	DR. SUJATA RAJ	MBBS, MD, DNB	PROFESSOR
4	DR. JOHN STEPHEN	MBBS, MD, DNB	PROFESSOR
5	DR. ISHWARA BHAT	MBBS, MD	PROFESSOR
6	DR. MADHUKARA J	MBBS, DVD, DNB	ASSOCIATE PROFESSOR
7	DR. MERYL ANTONY	MBBS, MD, DNB	ASSOCIATE PROFESSOR
8	DR. SOWMYA KAIMAL	MBBS, MD	ASSOCIATE PROFESSOR
9	DR. SHUBHA	MBBS, MD, DNB	ASSISTANT PROFESSOR
10	DR. PRATHIBHA J P	MBBS, DDVL, DNB	ASSISTANT PROFESSOR
11	DR. SUMEDHA BALLAL	MBBS, MD	ASSISTANT PROFESSOR
12	DR. CAROL LOBO	MBBS, MD	SENIOR RESIDENT

EMERGENCY MEDICINE

1	DR. SHAKUNATALA MURTY KANDIKUPPA	MBBS, MD, MRCP, FACEE	PROFESSOR & HEAD
2	DR. GIRISH NARAYAN	MBBS, MD, MRCEM	PROFESSOR
3	DR. KARTHIK REDDY C H	MBBS, MD	ASSOCIATE PROFESSOR
4	DR. HARSHIT MUNDRA	MBBS, MD, FARS	ASSISTANT PROFESSOR
5	DR. ASHRAJ V	MBBS, MD	ASSISTANT PROFESSOR
6	DR. VIKAS SUDAN M L	MBBS, DA, IDCCM, DNB	ASSISTANT PROFESSOR
7	DR. MANASA S. SESHADRI	MBBS, DPM, DNB	SENIOR RESIDENT
8	DR. MAHASWETA CHOUDHURY	MBBS, DNB	SENIOR RESIDENT
9	DR. RAKESH B. M.	MBBS, MD	SENIOR RESIDENT
10	DR. SUSHMA LAKSHMI	MBBS, DNB	SENIOR RESIDENT
11	DR. UDAYAGIRI PRANAVISRI	MBBS, DNB	SENIOR RESIDENT
12	DR. NEETU BAGARIA	MBBS, DNB	SENIOR RESIDENT
13	DR. NATHAN KOIL PANDI SATHUROCK	MBBS, FEM	TUTOR
14	DR. GAYATHRI SHARMA	MBBS, FEM	TUTOR

ENDOCRINOLOGY

1	DR. GANAPATHI BANTWAL	MBBS, MD, DM, DNB, MNAMS (Endo)	PROFESSOR & HEAD
2	DR. VAGEESH AYYAR	MBBS, MD, DM, DNB, MNAMS (Endo)	PROFESSOR
3	DR. BELINDA GORGE	MBBS, MD, DM	ASSOCIATE PROFESSOR
4	DR. SONALI APPAIAH	MBBS, MD, DM	ASSISTANT PROFESSOR

ENT (Otorhinolaryngology)

1	DR. ANITA C ROSS	MBBS, MS	PROFESSOR & HEAD
2	DR. BALASUBRAMANYA A.M.	MBBS, MS	PROFESSOR
3	DR. SREENIVAS V	MBBS, MS	PROFESSOR
4	DR. RAMESH A	MBBS, MS	PROFESSOR
5	DR. SOUMYA M.S.	MBBS, MS	ASSOCIATE PROFESSOR
6	DR. PRATIBHA C B	MBBS, DLO, DNB	ASSOCIATE PROFESSOR
7	DR. DEEPTHI SATISH	MBBS, DNB	ASSISTANT PROFESSOR
8	DR. CHAITHRA B G	MBBS, MS	SENIOR RESIDENT
9	DR. BHANUPRAKASH KAIPU	MBBS, MS	SENIOR RESIDENT
9	MRS. M. NAGAPOORNIMA	M.Sc, Speech & Hearing	TUTOR
10	MRS. SOWMYA M NAYAK	Masters in Audiology & Speech Language Pathology	TUTOR

FORENSIC MEDICINE

1	DR. VARGHESE P S	MBBS, DFM, MD	PROFESSOR & HEAD
2	DR. RAGHAVENDRA R	MBBS, MD	ASSOCIATE PROFESSOR
3	DR. MARILYN DELIGHTA	MBBS, MD	ASSISTANT PROFESSOR
4	DR. ANWAR K A	MBBS, MD	ASSISTANT PROFESSOR
5	DR. BETTY ALBEN	MBBS	TUTOR
6	DR. ADITYA KIDIYOOR	MBBS, MD	TUTOR

GASTROENTEROLOGY

1	DR. MALLIKARJUN	MBBS, MD, DM	PROFESSOR & HEAD
2	DR. HARSHAD DEVARBHAVI	MBBS, MD, DNB (Med), DM, DNB (Gastro), MNAMS	PROFESSOR
3	DR. SYED SHAFIQ	MBBS, MD, DM	ASSOCIATE PROFESSOR
4	DR. SUNU SARA KURIEN	MBBS, MD, DM	ASSISTANT PROFESSOR
5	DR. NIKHIL BUSH	MBBS, MD, DM	ASSISTANT PROFESSOR

GENERAL MEDICINE

1	DR. JYOTHI IDICULLA	MBBS, MD, FRCP	PROFESSOR & HEAD
2	DR. CHANDRAMOULI	MBBS, MD	PROFESSOR
3	DR. SEENA SANKAR	MBBS, MD	PROFESSOR
4	DR. CECIL ROSS	MBBS, MD, IHTC	PROFESSOR
5	DR. RATNAMALA CHOUDHURY	MBBS, MD	PROFESSOR
6	DR. GEETHA ANN FRANCIS	MBBS, DNB	ASSOCIATE PROFESSOR
7	DR. SOUMYA UMESH	MBBS, DNB	ASSOCIATE PROFESSOR
8	DR. ANASUYA.D.S.	MBBS, MD	ASSOCIATE PROFESSOR
9	DR. ABDUL MATEEN ATHAR	MBBS, MD	ASSOCIATE PROFESSOR
10	DR. SHRUTHI KULKARNI	MBBS, DNB	ASSOCIATE PROFESSOR
11	DR. MARY GEORGE. K	MBBS, MD	ASSISTANT PROFESSOR
12	DR. SAVITHA ANN SEBASTIAN	MBBS, MD	ASSISTANT PROFESSOR
13	DR. SEETHARAM ANANDRAM	MBBS, MRCP, FRCP (Path), CCT (UK, Haemat)	ASSISTANT PROFESSOR
14	DR. SANJUKTA RAO	MBBS, MD	ASSISTANT PROFESSOR
15	DR. THENMOZHI. N	MBBS, MD	ASSISTANT PROFESSOR

16	DR. JONITA EVETT FERNANDES	MBBS, MD	ASSISTANT PROFESSOR
17	DR. JANANEE MURALIDHARAN	MBBS, MD, DNB, MRCP	ASSISTANT PROFESSOR
18	DR. CHAITANYA H BALAKRISHNAN	MBBS, MD	ASSISTANT PROFESSOR
19	DR. PRIYANKA.P	MBBS, MD, DNB	SENIOR RESIDENT
20	DR. AARON CHARLES LOBO	MBBS, MD, DNB	SENIOR RESIDENT
21	DR. ANIL KUMAR	MBBS, MD, DNB	SENIOR RESIDENT
22	DR. RESHMA P.K	MBBS, MD	SENIOR RESIDENT
23	DR. JOHN PAUL	MBBS, MD	SENIOR RESIDENT
24	DR. RAGHAPRIYA	MBBS, MD	SENIOR RESIDENT
25	DR. MATHEW JACOB	MBBS, MD	SENIOR RESIDENT
26	DR. TIJI ALPHONSE	MBBS, MD	SENIOR RESIDENT

GENERAL SURGERY

1	DR. SRIDAR GOVINDARAJ	MBBS, MS, DNB, FRCS	PROFESSOR & HEAD
2	DR. SUBRAMANYAM S G	MBBS, MS, FMAS, FIAGES	PROFESSOR
3	DR. ANTHONY P. ROZARIO	MBBS, DNB, FRCS, FMAS, FACRSI	PROFESSOR
4	DR. HIMAGIRISH K RAO	MBBS, MS, MRCSed, M.CH, FIMSA	ASSOCIATE PROFESSOR
5	DR. CLEMENT PRAKASH T J	MBBS, MS	ASSISTANT PROFESSOR
6	DR. GIRIDHAR. A	MBBS, MS	ASSISTANT PROFESSOR
7	DR. AKSHAI. C K	MBBS, MS	ASSISTANT PROFESSOR
8	DR. KARTHIKEYAN. K	MBBS, MS	ASSISTANT PROFESSOR
9	DR. SUHAS S KUMAR	MBBS, MS, FIAGES	ASSISTANT PROFESSOR
10	DR. MARIO VICTOR NEWTON. L	MBBS, MS	ASSISTANT PROFESSOR
11	DR. GAYATHRI. V	MBBS, MS	ASSISTANT PROFESSOR
12	DR. SANDEEP . M	MBBS, MS	ASSISTANT PROFESSOR
13	DR. SHERLYN . A	MBBS, MS	ASSISTANT PROFESSOR
14	DR. AJAY A. GUTTEDAR	MBBS, MS	ASSISTANT PROFESSOR
15	DR. KARTHIK R AITHAL	MBBS, MS	SENIOR RESIDENT
16	DR. ARJUN O	MBBS, MS	SENIOR RESIDENT
17	DR. GRANCY VIJAY RAO MONTEIRO	MBBS, MS	SENIOR RESIDENT
18	DR. NAYAN JOHN PINTO	MBBS, MS	SENIOR RESIDENT

GYNAECOLOGIC ONCOLOGY

1	DR. PREMALATHA T.S	MBBS, DGO, DNB (OBG)	PROFESSOR & HEAD
2	DR. KIRAN ABHIJIT KULKARNI	MBBS, MS(OBG), M.CH(Gynae)	ASSOCIATE PROFESSOR
3	DR. GEETA ACHARYA	MBBS, MD, M.CH (Gyne onco)	ASSISTANT PROFESSOR
4	DR. VISHAKHA CHANDRAKANT BIDKAR	MBBS, DGO, DNB(OBG)	SENIOR RESIDENT

HISTORY OF MEDICINE

1	MRS. RADHIKA HEGDE	BA, MA (History)	TUTOR
---	--------------------	------------------	-------

HOSPITAL ADMINISTRATION

1	REV. DR. JOHN VARGHESE THEKKEKARA	MHA, MHRM, M.PHIL, Ph.D	PROFESSOR & HEAD
2	REV. FR. SABU NEDUNILATH	MHA	ASSOCIATE PROFESSOR
3	MRS. SUPREETHA CASTELINO	B.Sc, MHA	ASSOCIATE PROFESSOR

4	MRS. PRIYANKA ROY CHOWDHURY	B.Sc, MHA, MBA (HR)	ASSISTANT PROFESSOR
5	REV. FR. REGINALD PINTO	MHA, MHRM	ASSISTANT PROFESSOR
6	DR. RUCHI KANHERE	B.A.M.S, MHA	ASSISTANT PROFESSOR
7	DR. AYEESHA BEGAM	B.U.M.S., MHA	LECTURER

MEDICAL ETHICS

1	DR. SUNITA SIMON KURPAD	MBBS, MRC (Psych), DNB	PROFESSOR & HEAD
2	DR. G D RAVINDRAN	MBBS, MD, FCGP	PROFESSOR
3	DR. SANJIV LEWIN	MBBS, MD, DNB	PROFESSOR
4	DR. SHAKUNTHALA MURTY	MBBS, MD, MRCP, FACEE	PROFESSOR
5	DR. JYOTHI IDICULLA	MBBS, MD, FRCP	PROFESSOR
6	DR. VANAMALA ANAND ALWAR	MBBS, MD	PROFESSOR
7	DR. JOHNSON PRADEEP	MBBS, MD	ASSOCIATE PROFESSOR

MEDICAL EDUCATION

1	DR. JOHN STEPHEN	MBBS, MD, DNB	PROFESSOR & HEAD
2	DR. SANJIV LEWIN	MBBS, MD, DNB	MEMBER
3	DR. SITALAKSHMI S	MBBS, DCP, DNB, Ph.D	MEMBER
4	DR. SUNEETHA N.	MBBS, MS	MEMBER
5	DR. ISHWARA BHAT	MBBS, MD	MEMBER
6	DR. NACHIKET SHANKAR	MBBS, MS	MEMBER
7	DR. LAKSHMI T A	MBBS, MD	MEMBER
8	DR. PRETESH ROHAN KIRAN	MBBS, MD, DGM	MEMBER
9	DR. FARAH NAAZ FATHIMA	MBBS, MD, DNB, PGDHHM	MEMBER
10	DR. MANGALA RAO	MBBS, MD	MEMBER
11	DR. SOUMYA UMESH	MBBS, DNB	MEMBER
12	DR. KIRAN M	MBBS, MS., DNB (Gen Surg)., M.CH	MEMBER
13	DR. PREM K MONY	MBBS, MD, M.Sc	MEMBER
14	DR. SHUBHA N PRAKASH	MBBS, MD	MEMBER
15	DR. SEJIL. T V	MBBS, MD	MEMBER
16	DR. THENMOZHI .N	MBBS, MD	MEMBER
17	DR. HARSHIT MUNDRA	MBBS, MD, FARS	MEMBER
18	DR. JANANEE MURALIDHARAN	MBBS, MD, DNB, MRCP	MEMBER

MEDICAL ONCOLOGY

1	DR. GANESHA	MBBS, MD, DM (Med.Onco)	ASSOCIATE PROFESSOR SENIOR CONSULTANT & HEAD
---	-------------	-------------------------	---

MICRO BIOLOGY

1	DR. JAYANTHI SAVIO	MBBS, MD	PROFESSOR & HEAD
2	DR. S. MURALIDHARAN	MBBS, MD	PROFESSOR
3	DR. BAIJAYANTI MISHRA	MBBS, MD	PROFESSOR
4	DR. RANJANI SHAMSUNDAR	MBBS, MD, DMV	PROFESSOR
5	DR. SAVITHA NAGARAJ	MBBS, MD, DNB	PROFESSOR
6	DR. MARY DIAS	MBBS, MD	PROFESSOR
7	DR. SUPRIYA GACHINMATH B.G.	MBBS, MD, DNB	ASSISTANT PROFESSOR

8	DR. PRIYADARSHINI A PADAKI	MBBS, MD	ASSISTANT PROFESSOR
9	DR. MAMATHA V	MBBS, MD	TUTOR
10	DR. POOJA KUMARI	MBBS, MD	TUTOR
11	DR. MANISHA PAUL	MBBS, MD	TUTOR
12	MRS. JAYASUDHA V	M.Sc, MED (Microbiology)	TUTOR-AHS

NEONATOLOGY

1	DR. CHANDRAKALA B S	MBBS, MD, DNB (Neo), DNB (Pead)	PROFESSOR & HEAD
2	DR. SUMAN RAO P N	MBBS, MD, DM	PROFESSOR
3	DR. SAUDAMINI NESARGI	MBBS, DNB, FELLOW (Neo)	ASSOCIATE PROFESSOR
4	DR. SHASHIDHAR A	MBBS, MD, DM	ASSOCIATE PROFESSOR
5	DR. BHARATHI BALACHANDER	MBBS, MD, DM, DNB	ASSOCIATE PROFESSOR

NEPHROLOGY

1	DR. PRASHANT G KEDLAYA	MBBS, MD, DM, DNB	PROFESSOR & HEAD
2	DR. RENUKA S.	MBBS, MD, DNB	PROFESSOR
3	DR. RAVI PRAKASH D.	MBBS, MD, DM, DNB	PROFESSOR
4	DR. ANANTHARAM JAIRAM	MBBS, MD, DNB (Med), DM	PROFESSOR
5	DR. LIMESH M.	MBBS, MD, DNB	ASSOCIATE PROFESSOR
6	DR. KRITHIKA D. MURALIDHARA	MBBS, MD, DNB, MRCP	ASSISTANT PROFESSOR
7	DR. SHASHANK S. DHARESHWAR	MBBS, DNB (Med), DNB	SENIOR RESIDENT

NEUROSURGERY

1	DR. SHAILESH A V RAO	MBBS, M.CH, DNB	PROFESSOR & HEAD
2	DR. RAJESH R. RAYKAR	MBBS, MS, M.CH	ASSOCIATE PROFESSOR
3	DR. J. ADESH	MBBS, DNB, FINR	ASSISTANT PROFESSOR
4	DR. SIBHI GANAPATHY	MBBS, MS, M.CH, DNB, MNAMS, FAGE	ASSISTANT PROFESSOR
5	DR. AJAY M.	MBBS, MS, M.CH	ASSISTANT PROFESSOR

NEUROLOGY

1	DR. THOMAS MATHEW	MBBS, MD, DNB, DM	PROFESSOR & HEAD
2	DR. G.R.K. SARMA	MBBS, MD, DM	PROFESSOR
3	DR. RAGHUNANDAN NADIG	MBBS, MD, DNB (Neuro)	PROFESSOR
4	DR. SAGAR BADACHI	MBBS, MD, DM	ASSOCIATE PROFESSOR
5	DR. DELON D' SOUZA	MBBS, MD, DM	ASSISTANT PROFESSOR
6	DR. SONIA SHIVDE	MBBS, MD, DM	ASSISTANT PROFESSOR
7	DR. POONAM CHANDRASHEKAR AWATARE	MBBS, DNB (Med), DNB (Neuro)	SENIOR RESIDENT
8	DR. AMRUTHA AVATI	MBBS, MD (MED.)	SENIOR RESIDENT

OBSTETRICS AND GYNAECOLOGY

1	DR. ANNAMMA THOMAS	MBBS, MD	PROFESSOR & HEAD
2	DR. MANJULA S.K	MBBS, MS	PROFESSOR
3	DR. SHASHIKALA KARANTH	MBBS, DGO, DNB	PROFESSOR
4	DR. JAYASHREE V. KANA VI	MBBS, MS	ASSOCIATE PROFESSOR
5	DR. VISHNUPRIYA K.M.N	MBBS, MD	ASSOCIATE PROFESSOR

6	DR. RAO PREETHI VENKATACHALA	MBBS, DNB	ASSISTANT PROFESSOR
7	DR. ANURADHA G	MBBS, DGO, DNB	ASSISTANT PROFESSOR
8	DR. SHOBHA G	MBBS, MS, DNB	ASSISTANT PROFESSOR
9	DR. DEEPA R	MBBS, MS	ASSISTANT PROFESSOR
10	DR. MADHU SHWETA SHARMA	MBBS, MS, DNB	ASSISTANT PROFESSOR
11	DR. MEDINI LAKSHMESWAR	MBBS, MS	SENIOR RESIDENT
12	DR. SAHANA SREENIVAS	MBBS, MS, DNB	SENIOR RESIDENT
13	DR. ANITHA S	MBBS, MS	SENIOR RESIDENT
14	DR. SHRUTHI S S	MBBS, MS, DNB	SENIOR RESIDENT
15	DR. JISHMA JOSE	MBBS, MS	SENIOR RESIDENT
16	DR. ROSHNI T REVI	MBBS, DNB	SENIOR RESIDENT

OPHTHALMOLOGY

1	DR. SUNEETHA N.	MBBS, MS	PROFESSOR & HEAD
2	DR. REJI KOSHY THOMAS	MBBS, MS	PROFESSOR
3	DR. YAMINI PRIYA	MBBS, MS	ASSOCIATE PROFESSOR
4	DR. SHUBASHREE KARAT	MBBS, MS	ASSISTANT PROFESSOR
5	DR. WINSTON PADUA	MBBS, DNB (Ophthal), FVRS	ASSISTANT PROFESSOR
6	DR. SHALINI BUTOLA	MBBS, MS, DNB (Ophthal), FAICO, FICO, FVRS	SENIOR RESIDENT
7	DR. NIVEDHITHA NIKHIL	MBBS, MS, FAICO	SENIOR RESIDENT
8	DR. POOJA C M	MBBS, MS	SENIOR RESIDENT
9	DR. LINETTE ANTONY	MBBS, MS	SENIOR RESIDENT

ORTHO PAEDICS

1	DR. MALLIKARJUNASWAMY. B	MBBS, D'ORTHO, DNB ORTHO, MNAMS	PROFESSOR & HEAD
2	DR. RAMESH L.J	MBBS, MS	PROFESSOR
3	DR. RAJKUMAR S. AMARAVATI	MBBS, DNB ORTHO, MNAMS, FRCS, FTSS	PROFESSOR
4	DR. RAJAGOPAL H.P	MBBS, D'ORTHO, DNB Ortho	PROFESSOR
5	DR. JOE JOSEPH CHERIAN	MBBS, MS	PROFESSOR
6	DR. SRINIVASALU. S	MBBS, D'ORTHO, DNB ORTHO	ASSOCIATE PROFESSOR
7	DR. BINU T. KURIAN	MBBS, MS, MRCPS(GLASGOW) FPO (SHIFFIELD, UK)	ASSOCIATE PROFESSOR
8	DR. MADAN MOHAN. M	MBBS, MS	ASSOCIATE PROFESSOR
9	DR. SANDESH G.M	MBBS, MS	ASSISTANT PROFESSOR
10	DR. GANESH V	MBBS, MS	ASSISTANT PROFESSOR
11	DR. ANOOP P	MBBS, MS	ASSISTANT PROFESSOR
12	DR. MAHESH SHEKOBA	MBBS, MS, DNB ORTHO	ASSISTANT PROFESSOR
13	DR. ANKITH N.V	MBBS, MS, DNB ORTHO, FNB SPINE	ASSISTANT PROFESSOR
14	DR. KEVIN MATHEWS PHILIP	MBBS, MS, DNB ORTHO	SENIOR RESIDENT
15	DR. REUBEN C JOHNSON	MBBS, MS	SENIOR RESIDENT
16	DR. SAGAR TONTANA HAL	MBBS, MS, DNB ORTHO	SENIOR RESIDENT
17	DR. MIKE JORDAN J	MBBS, MS	SENIOR RESIDENT

PAEDIATRIC NEPHROLOGY

1	DR. ANIL VASUDEVAN	MBBS, MD, DNB, FPN	PROFESSOR & HEAD
2	DR. ARPANA IYENGAR	MBBS, MD, DNB, FPN, FRCP	PROFESSOR
3	DR. PRIYA PAIS	MBBS, MD, DABPN, M.Sc	ASSOCIATE PROFESSOR
4	DR. NIVEDITA KAMATH	MBBS, MD, DNB, FPN, DM	ASSOCIATE PROFESSOR

PAEDIATRIC SURGERY

1	DR. SHUBHA A M	MBBS, MS, M.CH	PROFESSOR & HEAD
2	DR. PRASANNA KUMAR A R	MBBS, MS, M.CH	ASSOCIATE PROFESSOR
3	DR. KIRAN M	MBBS, MS, DNB (Gen Surg), M.CH	ASSOCIATE PROFESSOR
4	DR. RAJKIRAN RAJU S.	MBBS, MS, M.CH, DNB	ASSISTANT PROFESSOR
5	DR. SHALINI G HEGDE	MBBS, MS, M.CH	ASSISTANT PROFESSOR
6	DR. SUMONA BOSE	MBBS, MS, M.CH (Paed Surgery)	SENIOR RESIDENT

PAEDIATRICS

1	DR. CHITRA DINAKAR	MBBS, DCH, DNB, PGDAP	PROFESSOR & HEAD
2	DR. SANJIV LEWIN	MBBS, MD, DNB	PROFESSOR
3	DR. FULTON S D'SOUZA	MBBS, MD DNB	PROFESSOR
4	DR. ANAND PRAKASH	MBBS, MD, DNB, FNB, PHO, FELLOWSHIP (PHO, SICKids)	PROFESSOR
5	DR. MARIA LORETTA LEWIN	MBBS, DCH, DNB	ASSOCIATE PROFESSOR
6	DR. VANDANA BHARADWAJ	MBBS, MRCPCH , FRC (Path), CCT (UK)	ASSOCIATE PROFESSOR
7	DR. RANJINI SRINIVASAN	MBBS, DNB	ASSOCIATE PROFESSOR
8	DR. K SUSHMA	MBBS, DNB	ASSISTANT PROFESSOR
9	DR. POORNIMA R N	MBBS, DCH, DNB, FAPE	ASSISTANT PROFESSOR
10	DR. JYOTI M	MBBS, MD, DNB, DM (Paeds Onco)	ASSISTANT PROFESSOR
11	DR. JAINY N J	MBBS, DCH, MD	ASSISTANT PROFESSOR
12	DR. CHAITRA G	MBBS, MD	SENIOR RESIDENT
13	DR. SUBAPRIYA R	MBBS, MD	SENIOR RESIDENT
14	DR. RANETA KURIAN PAUL	MBBS, MD	SENIOR RESIDENT
15	DR. ASHWINI B PRITHVI	MBBS, MD	SENIOR RESIDENT
16	DR. SHILPA K S	MBBS, MED Special Education	JR. CONSULTANT
17	DR. DEEPTHA VENKATA NARYANAN	MBBS, MD	SENIOR RESIDENT
18	DR. DHRITHI KODETHOOR	MBBS, MD	SENIOR RESIDENT
19	DR. NIKITH AUSTIN DSOUZA	MBBS, MD	SENIOR RESIDENT
20	DR. SHREYAS A C	MBBS, MD	SENIOR RESIDENT

PAEDIATRIC INTENSIVE CARE

1	DR. LALITHA A V	MBBS, MD, DNB, FNB (Ped Critical Care), FACEE-PEM	PROFESSOR & HEAD
2	DR. YASHASWINI K	MBBS, MD, DNB, FNB (Ped Critical Care)	ASSISTANT PROFESSOR
3	DR. CHANDRAKANT G PUJARI	MBBS, MD, Fellowship (PICU)	ASSISTANT PROFESSOR

PAIN & PALLIATIVE MEDICINE

1	DR. RENUKA S PAI	MBBS, DA, FCPM (Chronic Pain Med), FPM	CONSULTANT AT THE LEVEL OF ASSISTANT PROFESSOR
---	------------------	---	---

PATHOLOGY

1	DR. JULIAN ALPHONSE CRASTA	MBBS, MD, DNB	PROFESSOR & HEAD
2	DR. MARJORIE MARIA ANNE CORREA	MBBS, MD	PROFESSOR
3	DR. PRITILATA ROUT	MBBS, MD, PDF	PROFESSOR
4	DR. RAJALAKSHMI T	MBBS, MD, DNB	PROFESSOR
5	DR. ANURADHA ANANTHAMURTHY	MBBS, MD, M.Sc	PROFESSOR
6	DR. INCHARA Y K	MBBS, MD, DNB	ASSOCIATE PROFESSOR
7	DR. SURAVI MOHANTY	MBBS, DCP, DNB, PDCC	ASSOCIATE PROFESSOR
8	DR. R. GAYATRI	MBBS, MD, Ph.D	ASSISTANT PROFESSOR
9	DR. RENUKA MALIPATEL	MBBS, MD	ASSISTANT PROFESSOR
10	DR. GNANAPRIYA V	MBBS, MD, PDCC	ASSISTANT PROFESSOR
11	DR. MARIA FRANCES BUKELO	MBBS, MD	ASSISTANT PROFESSOR
12	DR. ASHITHA N N	MBBS, MD	TUTOR/ LECTURER
13	DR. TABINDA AIJAZ	MBBS, MD, DNB	TUTOR/ LECTURER
14	DR. SAMIYAH SYEED AHMED	MBBS, MD	TUTOR/ LECTURER
15	DR. TEREASA SEBASTIAN	MBBS, MD	TUTOR/ LECTURER
16	DR. PRIYANKA SAJIV	MBBS, MD	TUTOR/ LECTURER
17	DR. SALONI BANSAL	MBBS, MD	TUTOR/ LECTURER

PHARMACOLOGY

1	DR. PADMINI DEVI D	MBBS, MD	PROFESSOR & HEAD
2	DR. DENIS XAVIER	MBBS, MD, M.Sc (Clin Epi)	PROFESSOR
3	DR. ATIYA REHMAN FARUQUI	MBBS, MD	ASSOCIATE PROFESSOR
4	DR. MANGALA RAO	MBBS, MD	ASSOCIATE PROFESSOR
5	DR. ANURADHA S	MBBS, MD	ASSISTANT PROFESSOR
6	DR. DEEPAK KAMATH Y	MBBS, MD	ASSISTANT PROFESSOR
7	DR. BHUVANA K B	MBBS, MD, DNB	TUTOR/LECTURER
8	DR. SUMA JAYARAM	MBBS, MD	TUTOR
9	DR. SHASHIKALA G	MBBS, MD	TUTOR

PHYSICAL MEDICINE AND REHABILITATION

1	DR. KURIAN ZACHARIAH	MBBS, DNB (PMR)	PROFESSOR & HEAD
2	DR. BADARINATH ATHANI	MBBS, MS (Ortho), DNB (PMR)	PROFESSOR
3	DR. NIDHI RAWAT	MBBS, DNB (PMR) PDF (Neuro Rehab)	ASSOCIATE PROFESSOR
4	DR. JAYA DAS	MBBS, MD	ASSISTANT PROFESSOR
5	DR. RIA SABRENE FERNANDES	MBBS, MD	SENIOR RESIDENT
6	DR. ANIT CATHERINE	MBBS, MD	SENIOR RESIDENT

PHYSIOLOGY

1	DR. S. SUCHARITA	MBBS, MD, Ph.D	PROFESSOR & HEAD
2	DR. ANURA V KURPAD	MBBS, MD, Ph.D, FRCS, FAMS, FIUNS	PROFESSOR

3	DR. TONY DAVID SANJIV RAJ	MBBS, MD	PROFESSOR
4	DR. REBECCA RAJ	M.Sc, M.Phil, Ph.D	PROFESSOR
5	DR. MARIA PAULINE	MBBS, MD	ASSOCIATE PROFESSOR
6	DR. SAVITHA. D	MBBS, MD	ASSOCIATE PROFESSOR
7	DR. SOWMYA. S	MBBS, MD	ASSISTANT PROFESSOR
8	DR. SEJIL. T V	MBBS, MD	ASSISTANT PROFESSOR
9	DR. ASHWINI PRIYANKA V	MBBS, MD	TUTOR/LECTURER
10	DR. TANIYA ANTO	MBBS, MD, DNB	TUTOR/LECTURER
11	DR. PRANATHI. R	MBBS, MD, DNB	TUTOR/LECTURER
12	DR. SNEHA P. M	MBBS, MD, DNB	TUTOR/LECTURER
13	DR. VEDASHREE HEGDE	MBBS, MD	TUTOR/LECTURER

PHYSIOTHERAPY

1	DR. ANIL T JOHN	MPT, Ph.D	PROFESSOR
2	MR. ARUN STEPHEN SOLOMON V	MPT	ASSOCIATE PROFESSOR
3	MR. VENKATESAN R	MPT	ASSOCIATE PROFESSOR
4	MRS. REJISHA T R	MPT (Ph.D)	ASSOCIATE PROFESSOR
5	MR. SHANKAR GANESH	MPT (Ph.D)	ASSOCIATE PROFESSOR
6	MR. ANTONY PAUL	MPT	ASSISTANT PROFESSOR
7	MRS.SMITA ELIZABETH JOSEPH	MPT (Ph.D)	ASSISTANT PROFESSOR
8	MS. JENNIFER D SOUZA	MPT	LECTURER
9	MS. JENNIFER G V	MPT	LECTURER
10	MS. APOORVA LAXMI	MPT	LECTURER
11	MS. NISCHITHA R	MPT	LECTURER

PLASTIC SURGERY

1	DR. ABHA RANI KUJUR	MBBS, MS, M.CH	PROFESSOR & HEAD
2	DR. VIJAY T M JOSEPH	MBBS, MS, M.CH	PROFESSOR
3	DR. SUNDER RAJ ELLUR	MBBS, MS, M.CH	PROFESSOR
4	DR. NARENDRA S M	MBBS, MS, M.CH	ASSOCIATE PROFESSOR
5	DR. NAREN	MBBS, MS, M.CH	ASSOCIATE PROFESSOR
6	DR. NITA TRINA D'SOUZA	MBBS, MS, M.CH	ASSISTANT PROFESSOR
7	DR. SOUPARNA MANJUNATH	MBBS, MS, M.CH	SENIOR RESIDENT

PSYCHIATRY

1	DR. S.M. MANOHARI	MBBS, DPM, MRC (Psych), DNB (Psych)	PROFESSOR & HEAD
2	DR. SUNITA SIMON KURPAD	MBBS, DPM, MRC (Psych), DNB (Psych)	PROFESSOR
3	DR. M.V. ASHOK	MBBS, MD	PROFESSOR
5	DR. SRINIVASAN K	MBBS, DPM, MD	PROFESSOR
6	DR. JOHNSON PRADEEP	MBBS, MD	ASSOCIATE PROFESSOR
7	DR. PRIYA SREEDARAN	MBBS, DNB	ASSOCIATE PROFESSOR
8	DR. DIVYA HEGDE	MBBS, MD	ASSISTANT PROFESSOR
9	DR. SALAZAR LUKE JOSHUA	MBBS, MD	ASSISTANT PROFESSOR
10	DR. SUHAS CHANDRAN	MBBS, MD	ASSISTANT PROFESSOR
12	DR. BHUVANESHWARI. S	MBBS, DPM, MD	ASSISTANT PROFESSOR
14	DR. SHALINI PERUGU	MBBS, MD	SENIOR RESIDENT
16	DR. DEBASWETA PURKAYASTHA	MBBS, MD	SENIOR RESIDENT

CLINICAL PSYCHOLOGY

1	DR. VIJAYA RAMAN	M.Phil, Ph.D	PROFESSOR
2	DR. UTTARA CHARI	M.Phil, Ph.D	ASSISTANT PROFESSOR

PSYCHIATRY SOCIAL WORKER

1	MS. JILU MARIA DAVID	M.Phil in Psychiatric Social Work	LECTURER
---	----------------------	-----------------------------------	----------

PULMONARY MEDICINE

1	DR. GEORGE A. D'SOUZA	MBBS, MD, DNB	PROFESSOR & DEAN
3	DR. PRIYA RAMACHANDRAN	MBBS, MD, DNB	PROFESSOR & HEAD
2	DR. UMA MAHESWARI K	MBBS, MD, DM	PROFESSOR
4	DR. UMA DEVARAJ	MBBS, DNB (Internal Med), DNB (Resp Med)	PROFESSOR
5	DR. KAVITHA V	MBBS, MD, DM	ASSOCIATE PROFESSOR
6	DR. CHITRA V	MBBS, DNB	ASSISTANT PROFESSOR
7	DR. RUBY JOSEPH. K	MBBS, DNB	SENIOR RESIDENT
8	DR. JINCE ANN JOSE	MBBS, MD	SENIOR RESIDENT
9	DR. TANNYA JOSEPH	MBBS, MD	SENIOR RESIDENT
10	DR. MUTTAMSETTY SRIJA	MBBS, MD	SENIOR RESIDENT
11	DR. PAYYAVULA VENKAI AH	MBBS, MD	SENIOR RESIDENT

RADIATION ONCOLOGY (RADIOTHERAPY)

1	DR. NIRMALA S	MBBS, MD	PROFESSOR & HEAD
2	DR. SANDEEP MUZUMDER	MBBS, MD	ASSOCIATE PROFESSOR
3	DR. AVINASH HU	MBBS, MD	ASSOCIATE PROFESSOR
4	DR. JOHN SEBASTIAN MG	MBBS, MD	ASSISTANT PROFESSOR
5	MR. KATHIRESSAN R P	M.Sc, Medical Physicist	ASSISTANT PROFESSOR/RSO

RADIO DIAGNOSIS (RADIOLOGY)

1	DR. BABU PHILIP	MBBS, MD	PROFESSOR & HEAD
2	DR. RAVI HOISALA	MBBS, MD, DNB, DMRD	PROFESSOR
3	DR. ARUN GEORGE	MBBS, MD	ASSOCIATE PROFESSOR
4	DR. SANDEEP.S	MBBS, MD	ASSOCIATE PROFESSOR
5	DR. SOUMYA.C	MBBS, MD, DNB	ASSISTANT PROFESSOR
6	DR. NIDHI	MBBS, MD	ASSISTANT PROFESSOR
7	DR. SAIKANTH DEEPALAM	MBBS, MD, DM (Neuroradiology)	ASSISTANT PROFESSOR
8	DR. HARSHITH K	MBBS, MD, DM (Cardiovascular Radiology)	ASSISTANT PROFESSOR
9	DR. DEEPA SUSAN	MBBS, MD, DNB, FRCR	ASSISTANT PROFESSOR
10	DR. ROGER ANTHONY MANUEL	MBBS, MD	SENIOR RESIDENT
11	DR. JOVIS JOHNY	MBBS, MD, DNB	SENIOR RESIDENT
12	DR. SARFARAZ ADNAN HUSSAIN	MBBS, MD	SENIOR RESIDENT
13	DR. KARTHIK SHYAM	MBBS, MD	SENIOR RESIDENT
14	DR. THUNGA SWATHI	MBBS, MD	SENIOR RESIDENT
15	DR. BOBY JOSEPH	MBBS, MD	SENIOR RESIDENT
16	DR. JAYANTI MUSIB	MBBS, MD	SENIOR RESIDENT

17	DR. DEEPAK PETER THOMAS	MBBS, MD	SENIOR RESIDENT
18	DR. SKANDA RAGI	MBBS, MD	SENIOR RESIDENT

SURGICAL ONCOLOGY

1	DR. RAKESH S RAMESH	MBBS, DNB(Surgery), DNB(Surg. Onco), MNAMS, FMAS, FSO	PROFESSOR & HEAD
2	DR. MEDHA SUGARA	MBBS, MS, M.CH	ASSOCIATE PROFESSOR
3	DR. VIJAYA LAKSHMI V. V	MBBS, MS, M.CH	ASSISTANT PROFESSOR
4	DR. PARAMESH S	MBBS, MS, M.CH	ASSISTANT PROFESSOR

TRANSFUSION MEDICINE AND IMMUNOHAEMATOLOGY

1	DR. SHANTHALA DEVI A M	MBBS, MD	PROFESSOR & HEAD
2	DR. SITALAKSHMI S	MBBS, DCP, DNB, Ph.D	PROFESSOR
3	DR. VANAMALA ANAND ALWAR	MBBS, MD	PROFESSOR
4	DR. J. LATHA FATHIMA	MBBS, DCP, DNB	ASSISTANT PROFESSOR
5	DR. SWETA SRIVASTAVA	B.Sc, M.Sc, Ph.D in Molecular Biology and Chemistry	ASSISTANT PROFESSOR
6	DR. PARIMALA PUTTAIAH	MBBS, DCP	SENIOR TUTOR
7	DR. SARITHA REDDY	MBBS, MD	SENIOR RESIDENT
8	DR. MEGHANA P	MBBS, MD	SENIOR RESIDENT

UROLOGY

1	DR. SURYA KANT CHOUBEY	MBBS, MS, M.CH (Uro) , DNB (Uro), MNAMS (Uro)	PROFESSOR & HEAD
2	DR. CHETHAN V.N	MBBS, MS, M.CH (Uro)	ASSISTANT PROFESSOR
3	DR. MAHESH	MBBS, MS, MRCS (U.K), M.CH (Uro), Diploma in Laparoscopy (France)	ASSISTANT PROFESSOR
4	DR. RAHUL KUMAR CHATURVEDI	MBBS, MS, FACS, M.CH (Uro)	ASSISTANT PROFESSOR
5	DR. MADHU S N	MBBS, MS, M.CH (Uro)	ASSISTANT PROFESSOR

PARAMEDICAL COURSE CO-ORDINATORS

1	DR. SMITHA JSM	Ph.D	ASSISTANT CO-ORDINATORS
2	MS. JENNIFER G. VINCENT	MPT	ALLIED HEALTH SCIENCES

INSTITUTIONAL ETHICAL REVIEW BOARD

1	DR. KARUNA RAMESH KUMAR	CHAIRPERSON
2	MRS. KALPANA SUBRAMANYA	CO-CHAIRPERSON
3	DR. JAYANTI SAVIO	MEMBER SECRETARY
4	DR. PREM PAIS	MEMBER
5	DR. JYOTHI MARIAM IDICULLA	MEMBER
6	DR. MARY JOSEPH	MEMBER
7	DR. JAGDISH CHINNAPPA	MEMBER
8	DR. KAVITHA RAJARATHNA	MEMBER
9	DR. MANJULIKA VAZ	MEMBER
10	MR. ANIL ALBERT D'SOUZA	MEMBER

11	DR. ARVIND KASTHURI	MEMBER
12	DR. JOHNSON PRADEEP	MEMBER
13	DR. SAVITHA D.	MEMBER
14	DR. BINDHU MATHEW	MEMBER
15	DR. M MANJULADEVI	MEMBER
16	REV. DR. CHRISTOPHER VIMALRAJ HIRUTHYA	MEMBER
17	MRS. MARTHA JAISHREE	MEMBER

RESEARCH SOCIETY

1	DR. GEORGE A. D'SOUZA	PRESIDENT
2	DR. ANURADHA ANANTHAMURTHY	VICE PRESIDENT
3	REV. DR. J. CHARLES DAVIS	TREASURER
4	DR. R. GAYATRI	SECRETARY
5	DR. BENZEETA PINTO	JOINT SECRETARY
6	DR. SAVITHA NAGARAJ	EX-OFFICIO MEMBER
7	DR. DHANYA RAVEENDRANATHAN	EX-OFFICIO MEMBER
8	DR. RAMESH A.	CONVENOR RESEARCH METHODOLOGY TRAINING
9	DR. NACHIKET SHANKAR	CONVENOR RESEARCH GRANTS
10	DR. BHUVANA K B	MEMBER
11	DR. KAVITHA V	MEMBER

STUDENT DISCIPLINARY COMMITTEE MEMBERS

1	DR. GEORGE A. D'SOUZA	DEAN
2	REV. DR. J CHARLES DAVIS	ASSOCIATE DIRECTOR
3	DR. ANURADHA ANANTHAMURTHY	VICE DEAN
4	DR. JOHN STEPHEN	VICE DEAN
5	DR. MARY DIAS	VICE DEAN
6	DR. BOBBY JOSPEH	VICE DEAN
7	DR. SANJIV LEWIN	CHIEF OF MEDICAL SERVICES
8	DR. CLYDE RICHARD	STUDENT'S REPRESENTATIVE, PG
9	MS. TEENA MARIA THOMAS	PRESIDENT, STUDENT'S ASSOCIATION

PHYSICAL EDUCATION

1	MR. RAMANJANAPPA, M.Ed., M.Phil.	HEAD
---	----------------------------------	------

PASTORAL CARE

1	REV. FR. SEBY VELLANIKARAN CMI	CHAPLAIN
2	REV. FR. WILSON PAUL	ASSOCIATE CHAPLAIN

LIBRARY - ZABLOCKI LEARNING CENTRE

1	DR. S. JOHN CLARENCE	LIBRARIAN
---	----------------------	-----------

ADMINISTRATIVE STAFF

CBCI SOCIETY FOR MEDICAL EDUCATION

1	Rev. Dr. Paul Parathazham L.Ph., L.Th., M.A., Ph.D (USA)	Secretary, CBCI Society for Medical Education Director SJNAHS
2	Rev. Fr. Jesudoss Rajamanickam	Treasurer, CBCI Society for Medical Education Associate Director (Finance), SJNAHS
3	Mr. Steven D'Souza	Superintendent - Accounts
4	Mrs. Sophia Heera John	Executive Secretary

ST. JOHN'S MEDICAL COLLEGE

1	Rev. Dr. J Charles Davis	Ph.D & Habilitation (Bioethics, Germany)	Associate Director (ADC)
2	Mrs. Divya Theresa		Secretary to ADC
3	Mr. Roshan Noronha		Sr. Superintendent, Academic Section
4	Mr. Alby John		Superintendent, Account Section
5	Mrs. Gracy Noronha		Personal Secretary to the Dean

ST. JOHN'S MEDICAL COLLEGE HOSPITAL

1	Rev. Dr. John Varghese Thekkekara	MHA, MHRM, M.Phil, Ph.D	Associate Director
2	Dr. Sanjiv Lewin	MD, DNB	Chief of Medical Services
3	Sr. Ria Emmanuel	M.Sc. (Nsg.)	Chief of Nursing Services
4	Mrs. Eugin P Alexander	M.Sc. (Nsg.)	Nursing Superintendent
5	Mrs. Sara Oommen	M.Sc. (Nsg.)	Nursing Superintendent
6	Mrs. Sugandhi D'Souza	M.Sc. (Nsg.)	Nursing Superintendent
7	Fr. Vimal Francis	MBA, BTH, BPH, BA	Manager - HR
8	Mr. Stephens J.L.		GM Engg. & Facility Management
9	Dr. Ramesh L.J.	MBBS, D'Ortho, MS	Associate Medical Superintendent
10	Dr. Mary Joseph	MBBS, MS	Associate Medical Superintendent
11	Dr. Savitha Nagaraj	MBBS, MD, DNB	Associate Medical Superintendent

ST. JOHN'S COLLEGE OF NURSING

1	Prof. Reena Menon	M.Sc. Nsg	Principal
2	Dr. Sr. Prasada	M.Sc. Nsg, Ph.D	Vice Principal - UG
3	Dr. Bindhu Mathew	M.Sc. Nsg, Ph.D	Vice Principal - PG

ASSOCIATE DIRECTOR FINANCE

1	Rev. Fr. Jesudoss Rajamanickam	Assoc. Director Finance & Treasurer CBCI Society for Medical Education
2	Mr. S.S. Patil	Project Manager

3	Mrs. Martha Jayashree	Jr. Legal Officer
4	Mr. Herbert Albert	Senior Manager, IT

ST. JOHN'S RESEARCH INSTITUTE (SJRI)

1	Dr. Tony D.S. Raj	MBBS, MD	DEAN
2	Dr. Prem Mony	MBBS, MD, M.Sc	Vice-Dean

MEDICAL STUDENTS HOSTEL

1	Rev. Dr. J Charles Davis	Warden
2	Dr. Anwar K A	Asst. Warden
3	Mr. Sankar Ganesh	Asst. Warden
4	Dr. Sejil T V	Asst. Warden
5	Dr. Lokendra Yadav	Asst. Warden
6	Sr. Princi Joseph	Asst. Warden
7	Sr. Anees	Asst. Warden
8	Sr. Jessie Saldana	Asst. Warden
9	Sr. Jessy Joseph	Asst. Warden

SCHOLARSHIPS

A - SCHOLARSHIPS

The College awards the following scholarships each year;

S.No.	Name of the Award	Founded By
UG-01	The Cardinal Gracias Scholarship	The Catholic Schools of Bombay, on the occasion of the conferment of the national title of 'Padma Vibhushan' on His Eminence Valerian Cardinal Gracias, who was the first President of the C.B.C.I. Society for Medical Education in 1966
UG-02	The Dean Louis Monteiro Scholarship	In the Silver Jubilee Year, by Dr. Marguerite Pinto, Alumna of Batch 1964, in honour of her father
UG-03	Rev. Fr. F.N.Loesch, S.J., Memorial Scholarship	
UG-04	Karnataka Region Catholic Bishops' Scholarship	Fr. Ignatius Pinto, former Secretary of the Karnataka Region Catholic Bishops' Council
UG-05	Fr. John P.M. van der Ploeg's Golden Jubilee 1982 Scholarship	
UG-06	The SJMC Alumni Association Scholarships	The Executive Committee of the SJMC Alumni Association in 1991
UG-07	The SJMC Parents Association Scholarship	SJMC Parents' Association in 1991
UG-08	Mr. Thomas Putti Memorial Scholarship	Dr. Joseph Putti in 1991
UG-09	The Smt. Kamamma Narayana Iyer Scholarship	Dr. A.N. Balasundaram in 1992
UG-10	The A.G. Narayan Iyer Scholarship	Dr. A.N. Balasundaram in 1992
UG-11	Dr. F.H. Noronha Scholarship	By the will of Mrs. Cecilia Franco in 1993

FOR MBBS STUDENTS

these are regulated by the rules prescribed in each individual case

Awarded to	Eligibility Rules
Two MBBS students	Awarded annually on application to MBBS students on a means-cum-merit basis
MBBS student	Awarded annually on application to a student on a means-cum-merit basis
A newly admitted MBBS student	Awarded to a newly admitted MBBS student on merit-cum-means basis. This scholarship is tenable subject to satisfactory conduct and progress throughout the 1st M.B.B.S. Course.
Catholic MBBS student of Karnataka	Awarded on Merit-cum-means basis, to a Catholic student of Karnataka. This Scholarship is tenable subject to the marks secured at the qualifying examination, if any, conducted by the University, as well as the conduct and behaviour of the applicant.
Religious Sister MBBS Student.	A Religious Sister Medical Student.
Two Scholarships for MBBS students	Awarded to two MBBS students on a merit-cum-means basis each year.
MBBS Student	MBBS Student on merit-cum-means basis each year.
Undergraduate or Postgraduate student	Undergraduate or Postgraduate student of St. John's Medical College on merit-cum-means basis each year, with additional weightage to those who show keen interest in Cancer Research
Female MBBS Student	One female MBBS Student on a merit-cum-means basis each year.
Male MBBS Student	One male MBBS Student on a merit-cum-means basis each year.
MBBS Student	MBBS Student on a merit-cum-means basis each year.

S.No.	Name of the Award	Founded By
UG-12	Dr. A. Yesupriya Scholarship	Alumni of Batch 1968 & Dr. Yesupriya's family in 1993
UG-13	Peter Menezes Scholarship	Mrs. Brice Menezes in 1994 in Memory of her husband.
UG-14	Dr. Sr. Mary Glowery JMJ-CHAI Scholarship	The Catholic Health Association of India in 1995
UG-15	Ms. Louise Rebello Scholarship	Ms. Louise Rebello in 1995
UG-16	Dr. Charles D'Souza Scholarship	Dr. Santhosh Prabhu, Alumnus of Batch of 1973 in honour of his father
UG-17	Bishop Sebastian Mankuzhikary Memorial Scholarship	The Bishop Sebastian Mankuzhikary Memorial Trust set up by the immediate family of the late Bishop Sebastian Mankuzhikary in 1997
UG-18	Mohan Peter Family Scholarships	Dr. Mohan Peter, alumnus of batch 1963 in 1998
UG-19	Mr. Michael Menezes & Mrs. Lily Menezes Scholarship	Dr. Marian Menezes in memory of his parents
UG-20	Richard Alphonsus Miranda Scholarship	Mrs. Brice Menezes in 2007
UG-21	Dr. Frank Noronha Scholarship	Mr. Clement Silva in 2015
UG-22 AA	Dr. Thomas Chandy Scholarship	Dr. Thomas Chandy
UG-23 AA	Women in Sports Scholarship	Dr. Carol D 'Souza, an alumna of St. John's Medical College.
UG-24	Dr. M.A. De Heredia Scholarship	
UG-25	Dr. Anil Rajesh Dung Dung Memorial Scholarship	MBBS Batch of 1991
UG-26 AA	SJMC Alumni Associates EC 2018 Scholarship (3 year committed)	Executive Committee of 2018 Alumni Association
UG-27	FOSJ/SJMCAA NA Medical Student Scholarship	Friends of St. Johns, USA & SJMC Alumni Association North American Chapter
UG-28	Dr. Ajoy Rao Bhardwaj Scholarship	Mr. Suresh N Rao Father of Dr. Ajoy Rao Bharadwaj
UG-29	Mr. Michael & Mrs. Lilly Menezes Scholarship	Dr. Lynette & Dr. Marian in memory of parents Michael & Lilly Menezes

Awarded to	Eligibility Rules
MBBS Student	MBBS Student on a merit cum-means basis each year.
Two scholarships for MBBS students	Two MBBS students on a merit-cum-means basis each year.
Two scholarships for MBBS students	Two MBBS students on a merit-cum-means basis each year.
MBBS student	One MBBS student on a merit-cum-means basis each year.
One MBBS student	One MBBS student on a merit-cum-means basis
One MBBS student	One MBBS student on merit-cum-means basis
Four Scholarships for MBBS students	4 MBBS students on merit-cum-means basis.
Medical Student	Deserving undergraduate Medical Student.
MBBS lay student	MBBS lay student on merit-cum-means basis.
MBBS graduate	A deserving undergraduate Medical Student
1st MBBS student (Entry level)	Entry level MBBS student on means basis
Female MBBS student	A female MBBS student with good academic background, economic need and achievement in sports
One MBBS Student	Merit cum means basis
One MBBS student of Tribal, Dalit of North Indian Native Catholic	Merit cum means basis
Two 2nd MBBS student for 3 consecutive years	Merit cum means basis
Three MBBS Students	Merit cum means basis
Female MBBS Student	Merit cum means basis
MBBS Student full tuition fee	Merit cum means basis

S.No.	Name of the Award	Founded By
UG-30	St. John's Medical College Management Scholarship	St. John's Medical College Management
UG-31	The SJMC MBBS Batch of 1979 Scholarship for 1 st MBBS student (4 year committed)	MBBS Batch of 1979 in the year 2021
UG-32	The SJMC MBBS Batch of 1994 Silver Jubilee Scholarship for 2 nd MBBS student (4 year committed)	MBBS Batch of 1994 in the year 2021

Awarded to	Eligibility Rules
Three Scholarships for MBBS Student	Merit cum means basis
1 st MBBS Student	Merit cum means basis
2 nd MBBS Student	Merit cum means basis

B - SCHOLARSHIPS FOR MEDICAL

The College awards the following scholarships each year;

S.No.	Name of the Award	Founded By
PG-01	The SJMC Alumni Association Scholarship	The Executive Committee of the SJMC Alumni Association in the year 1992
PG-02	The Prof. A.N. Radhakrishnan Scholarship	Dr. A.N. Balasundaram
PG-03	Mr. Thomas Putti Memorial Scholarship	Dr. Joseph Putti in the year 1991
PG-04	Dr. R. Chavrimootoo Scholarship	Dr. R. Chavrimootoo, 1967 Batch Alumnus in the year 1992
PG-05	Peter Menezes Scholarship	Mrs. Brice Menezes, in memory of her husband in the year 1994
PG-06	Dr. Sr. Mary Glowrey JMJ-CHAI Scholarship	The Catholic Hospital Association of India
PG-07	Ms. Louise Rebello Scholarship	Ms. Louise Rebello in the year 1995
PG-08	1991 Batch of MBBS Students' Scholarship	1991 batch of MBBS students
PG-09	Mohan Peter Family Scholarships	Dr. Mohan Peter, Alumnus of Batch 1963
PG-10	Paul Francis Mookken Memorial Scholarship	1987 batch MBBS students and Dr. Paul Francis Mookken's Family
PG-11	1993 Batch of MBBS Students' Scholarship	1993 batch of MBBS students
PG-12	C.B.C.I Society for Medical Education Scholarship	Governing Board of the C.B.C.I. Society for Medical Education in the year 2003.
PG-13 AA	SJMC Alumni Association EC 2018 Scholarship (3 year committed)	Executive Committee of 2018 Alumni Association
PG-14 AA	Dr. Mary Ollappally Memorial Scholarship	Alumni Association & Wellwishers of Dr. Mary Ollappally former Dean, SJMC Alumnus

POSTGRADUATE STUDENTS

these are regulated by the rules prescribed in each individual case

Awarded to	Eligibility Rules
TWO Medical Postgraduate Students	Merit-cum-means basis each year.
ONE Medical Postgraduate Student	Merit-cum-means basis each year
Under-graduate or Post-graduate student of St. John's Medical College	Merit-cum-means basis each year, with additional weightage to those who show keen interest in Cancer Research
Postgraduate Student	Merit-cum-means basis each year.
TWO Medical Postgraduate Students.	Merit-cum-means basis each year
ONE Medical Postgraduate student	Merit-cum-means basis each year.
ONE Postgraduate student	Merit-cum-means basis each year.
Postgraduate student	Merit-cum-means basis each year
THREE Postgraduate students	Merit-cum-means basis each year
ONE Post Graduate student	Merit-cum-means basis each year
ONE Post Graduate student	Merit-cum-means basis each year
ONE P.G. Student	Merit-cum-means basis
1st Year PG Student	Merit-cum-means basis
PG Student with priority for Anaesthesia	Merit-cum-means basis

C - SCHOLARSHIP FOR

The College awards the following scholarship each year;

S.No.	Name of the Award	Founded By
MLT-01	C.B.C.I. Society for Medical Education Scholarship	The Governing Board of the CBCI Society for Medical Education in 2000
AHS-02	AHS scholarship fund for B.Sc & BPT	St. John's Medical College
AHS-03	St. John's Medical College Management Scholarship for AHS B.Sc	St. John's Medical College Management
AHS-04	St. John's Medical College Management Scholarship for AHS BPT	St. John's Medical College Management

ALLIED HEALTH SCIENCE STUDENTS

these are regulated by the rules prescribed in each individual case

Awarded to	Eligibility Rules
One MLT student	Merit-cum-means basis
B. Sc and BPT student	Merit-cum-means basis
5 Scholarship for B. Sc Students	Merit-cum-means basis
1 Scholarship for BPT Students	Merit-cum-means basis

AWARDS

A - AWARDS & PRIZES

The College awards the following prizes each year;

S.No.	Name of the Award	Founded By
A-1	Pope Paul VI Prize and Medal	His Holiness Pope Paul VI in 1965 on the occasion of laying of the corner stone of the College Project -38 th International Eucharistic Congress
A-2	Dr. and Mrs. Menino D'Souza Award	
A-3	Archbishop Thomas Pothacamury Memorial Prize	The Governing Body on the recommendation of the first Dean, Dr. L. Monteiro
A-4	Cardinal Gracias Ethics Prize	The Catholic Schools of Bombay in honour of His eminence Valerian Cardinal Gracias in 1970
A-5	The Dean Louis and May Monteiro Prize	The Governing Body in recognition of the service of Dean Louis Monterio
A-6	Pio and Arinda Monteiro Memorial Prize in Pathology	The Governing Body on the recommendation of Dr. L. Monteiro in memory of his parents
A-7	Joseph Saldanha Memorial Prize in Microbiology	The Governing Body on the recommendation of Dr. L. Monteiro in memory of his Brother-in-law
A-8	Catholic Medical Guild of St. Luke, Bombay Prize	The Catholic Medical Guild of St. Luke, Bombay in 1968
A-9	Smt. Aleyamma Thanangatt Memorial Prize	Mr. J.J. Thomas, M/s. Gina Engineering Company, Bangalore, in memory of his mother in 1977
A-10	Dr. Fred and Domitilla Saldanha Memorial Prize	Late Mrs. Domitilla Saldanha of Pune, in memory of her husband in 1965
A-11	Bishop Alphonsus Mathias Prize	Rt. Rev. Alphonsus Mathias 1981

for MBBS STUDENTS

these are regulated by the rules prescribed in each individual case

Awarded to	Eligibility Rules
MBBS graduate.	Best outgoing MBBS graduate
One male and One female MBBS graduate on completion of internship for all round performance	Based on the all-round performance during the last two years of M.B.B.S. studies and internship done in this Institution.
Best Religious MBBS student	Best Outgoing Religious student from among the Priests, Religious Sisters & Brothers
MBBS student Term V & Term VII	Two prizes for Ethics
A member of the staff of St. John's Medical College, Bengaluru, and its affiliated hospitals of the rank of Assistant Professors and below	The best research work in any field of Medicine, and allied subjects which has been accepted for publication in a recognized journal.
MBBS Student for Pathology	The student obtaining the highest marks in Pathology at a Competitive Examination held by the College.
MBBS student for Microbiology	The student obtaining the highest marks in Microbiology at a Competitive Examination held by the College.
MBBS student for III MBBS Examination.	The student passing the 3 rd MBBS Examination on the first attempt, and standing first among the students of the College in the Examination.
MBBS student for - Ophthalmology	The student obtaining the highest marks, and standing first in the College, in Ophthalmology, at the first attempt, at the regular University Examination.
MBBS Student for I MBBS Examination	The student passing the regular 1st MBBS Examination and standing first among the students of the College in the Examination.
MBBS student for Microbiology	The student passing the regular 2nd MBBS Examination at the first attempt, and standing first among the Students of the College in Microbiology.

S.No.	Name of the Award	Founded By
A-12	The Paul Abrao Memorial Prize	Paul Abrao Memorial Charitable Trust, Cochin, in memory of the late Dr. Paul Abrao in 1969
A-13	Dr.Hasmukh J. Mehta Memorial Prize	Students of the first M.B.B.S. Class 1973-74 batch, & Dr. Prashant H. Mehta, in memory of his father in 1973
A-14	The Major-General S.L. Bhatia Prize	
A-15	Dr. N.K. Apte Prize of the A.O.I.	The A.O.I. and the Dept. of E.N.T. SJMCH
A-16	Astra Idl Prize	M.I.T. Laboratories, Bangalore in 1980
A-17	Dr I.M. Thomas Prize for Excellence in Anatomy	Dr. G Thomas in 1990
A-18	Ram Narain Dhawan Urology Award	Mr. Kushal Dhawan in 1990
A-19	The Dr. F.H. Noronha Award	Late Mrs. Cecilia Franco in her Last Testament
A-20	The Martha Mary Pinto Prize	Drs. Celine and Lawrence Lobo in 1991
A-21	Bactroban Prize	Smith Kline Beecham Pharmaceuticals in 1995
A-22	P. Manjunath Nayak Memorial Award	Eros Pharma Pvt. Ltd in 1995
A-23	Dr. Carlton Tavares Award	Dr. Carlton Tavares, Alumnus St. John's 2012
A-24	Cadila Health Care Prize	Cadila Health Care in 1998

Awarded to	Eligibility Rules
MBBS student for Forensic Medicine	The student passing the regular 2nd MBBS Examination at the first attempt, and standing first among the students at the College in Forensic Medicine.
MBBS student/intern for a project	Undergraduate student/intern whose work is adjudged to be the best for the year, either as an individual or as a joint project.
MBBS student for Physiology	The student passing the regular 1 st MBBS Examination at the first attempt, and standing first among the students of the College in Physiology.
MBBS student for ENT	The student obtaining the highest marks in a competitive examination in E.N.T. held by this Institution.
MBBS student for Pharmacology	The student obtaining the highest marks in Pharmacology at a competitive examination held by the College.
MBBS student for Anatomy	The student obtaining the highest marks in Anatomy in both internal assessment & at the University examination.
Final MBBS for Urology	The student of the Final Year batch on the basis of performance at a special examination conducted by the Urology department.
Best MBBS Student	To the BEST MBBS Student each year.
Final MBBS student for Obstetrics and Gynaecology	The Final MBBS student securing the highest marks in Obstetrics and Gynaecology at the University Examination each year
MBBS student for Dermatology	An MBBS student who secures the highest marks at a competitive examination conducted by the Department of Dermatology.
MBBS student for Biochemistry	MBBS student passing Biochemistry at the first attempt and securing the highest marks among the students of the College.
Final MBBS student for General Surgery	Final MBBS student securing the highest marks in a special examination conducted by the General Surgery Department
Final MBBS student for General Surgery	Final MBBS student securing the highest marks in a special examination conducted by the General Surgery Department.

S.No.	Name of the Award	Founded By
A-25	Rev. Dr. Percival Fernandez Prize	Rev. Dr. Percival Fernandez in 2000
A-26	St. John's Medical College Hospital Silver Jubilee- Bank of Baroda Prize	Bank of Baroda, SJMC Campus Branch in 2001
A-27	Smt. & Sri. Joji Reddy Thumma Memorial Prize in Pharmacology	Dr. Kasapareddy Thumma and Family members in 2001
A-28	Annual Awards for Outstanding Rural Service	The Governing Board of the C.B.C.I. Society for Medical Education in 1998
A-29	The J. Vaz Memorial Prize in the History of Medicine	Dr. Mario Vaz, Department of Physiology, SJMC in memory of his father in 2002
A-30	Mrs. Lititia Misquith Awards - 3 Awards	Dr. Felix Misquith in 2003
A-31	Dr. Chitra Stephen Solomon Memorial Award	Mr. Solomon Ravikumar in 2004
A-32	Mrs. Annamma Antony Athiparampil Prize	Dr. Serene Annie Francis of 1998 batch, in memory of her grandmother in 2004
A-33	Dr. R.C. Nadig Memorial Prize	The SJMC Faculty and Alumni who were associated with Dr. R.C. Nadig in 2006
A-34	Dr. Kalpana Rao Prize	In memory of Dr. Kalpana, by Dr. K.B. Gururaj Prasad, brother of Dr. Kalpana Rao, and mother Mrs. B.S. Vedavati and members of her family in 2008
A-35	Rev. Dr. Thomas Kalam Prize	Rev. Dr. Thomas Kalam in 2009
A-36	Mrs. & Mr. G.G.Kini Prize for Excellence in Pathology.	Dr. Usha Kini, Professor & former Head, Department of Pathology, St. John's Medical College, in honour of her parents in 2010
A-37	Spirit of St. John's Paediatric UG Prize	Batch of 1981

Awarded to	Eligibility Rules
MBBS student for Best Sports Person	Awarded to Best Sports Person of the Year among the Medical College Students
Final year MBBS student for Community Medicine	The final year MBBS student who scores highest marks in Community Health.
MBBS student for Pharmacology	The student with the highest marks in Pharmacology in the University Examination.
Two prizes are awarded to One lay doctor & One religious sister doctor alumnae/ni of this Institution.	One lay doctor and one Religious Sister Doctor Aluminae/ni of this institution for outstanding rural service.
II MBBS students for History of Medicine	In History of Medicine for an open Essay.
3 Awards for I, II and III MBBS students	Catholic student who passes the University Exam of 1st, 2nd and 3rd MBBS at first attempt and gets the highest number of total marks.
MBBS for Community Medicine	Best outgoing MBBS student in Community Health.
MBBS student for General Medicine	MBBS student passing General Medicine at first attempt and securing highest marks among students of St. John's Medical College.
Phase III Part I MBBS student	Student securing highest marks in Ophthalmology in the prize examination conducted by the Department of Ophthalmology.
MBBS student for Biochemistry.	MBBS student for securing highest marks in the University exam in Biochemistry.
MBBS student for the best research project	Best research project carried out by an MBBS student during the year.
MBBS student for Pathology	MBBS student obtaining highest marks in Pathology in both internal assessment and at the University examination.
UG (MBBS) Student	UG Student standing first in the theory and clinical examination held in the Paediatric Department.

S.No.	Name of the Award	Founded By
A-38	Dr. Mathew Ollapally Prize	Dr. Mary M. Ollapally
A-39	Dr. Sylvan John Rego Award in Paediatrics	Batch of 1981
A-40	Lakshmeswar Nagraj Memorial Prize in Surgery	Dr. L.N. Mohan

Awarded to	Eligibility Rules
Medical and Nursing students, Postgraduates and junior doctors in Pain & Palliative care	Conducted for Medical and Nursing students, PGs and Junior doctors in a Pain and Palliative care examination.
MBBS Student for Paediatrics	MBBS Student standing first in examination held in the Paediatric Department.
MBBS Student for General Surgery	MBBS Student standing first in the final examination in General Surgery

B - AWARDS & PRIZES

The College awards the following prizes each year;

S.No.	Name of the Award	Founded By
1	Rev. Dr. Percival Fernandez Award	Dr. Percival Fernandez in the year 2000.
2	Dr. Reddy's Laboratories Prize	Dr. Reddy's Laboratory in the year 1999
3	Mrs. Vanaja Nagendran & Mr. K. TI Shivalingaiah Memorial Gold Medal	Dr. Radhika Dhanpal & Dr. Savitha K.S. in memory of their parents
4	Dr. Arun Kilpadi Prize	Dr. Arun Kilpadi
5	Dr. R B Galgali Prize	Dr. R. B Galgali
6	Prof. K. N Sharma Prize	Department of Physiology
7	Dr A K Roy Award in Neurology	Dr A. K. Roy
8	Dr. Sylvan Rego Award in Paediatrics	Batch of 1981

FOR MEDICAL POST GRADUATE STUDENTS

these are regulated by the rules prescribed in each individual case

Awarded to	Eligibility Rules
One Medical Postgraduate student	All Round Best Outgoing Post Graduate of the Year in the Medical College.
TWO Post Graduate Students - one in General Medicine and one in Obstetrics & Gynaecology	Who secure the highest marks in a special prize examination conducted by the Department for the outgoing graduates.
ONE Postgraduate student	Best out- going postgraduate student in Anesthesiology each year.
Final year P.G. Student in M S General Surgery	Final year P.G. Student in M S General Surgery who stands first in a Prize Examination to be conducted 6 months prior to the final M S General Surgery Examination.
Final year P.G. Student in Psychiatry	Best out- going postgraduate student in Psychiatry.
Final year P.G. Student in Physiology	Best out- going postgraduate student in Physiology.
Post Doctoral Student in DM Neurology	Student standing first in the examination held by the University
Final year P.G. Student in Paediatrics	Student standing first in the MD Paediatrics examination held by the University

C-AWARDS & PRIZES**GRADUATE AND**

The College awards the following prizes each year;

S.No.	Name of the Award	Founded By
1	C.B.C.I. Society for Medical Education Prize	The Governing Board of the CBCI Society for Medical Education in 2000
2	C.B.C.I. Society for Medical Education Prize	The Governing Board of the CBCI Society for Medical Education in 2000
3	C.B.C.I. Society for Medical Education Prize	The Governing Board of the CBCI Society for Medical Education in 2000
4	C.B.C.I. Society for Medical Education Prize	The Governing Board of the CBCI Society for Medical Education in 2000
5	Mrs. And Mr. G.G. Kini Prize for Excellence in Pathology	Dr. Usha Kini, Professor and former Head, Department of Pathology, St. John's Medical College, Bangalore
6	Teruma Penpol Award	Teruma Penpol Ltd., in 2008
7	BD India Pvt. Ltd. Award	Becton and Dickenson India Pvt. Ltd. In March 2010

FOR ALLIED HEALTH SCIENCE**POSTGRADUATE PROGRAMMES**

these are regulated by the rules prescribed in each individual case

Awarded to	Eligibility Rules
B.Sc. Renal Dialysis student	Best outgoing B.Sc. Renal Dialysis student
B.Sc. Medical Imaging Technology	Best outgoing B.Sc. Medical Imaging Technology student
B.Sc. Perfusion Technology	Best outgoing B.Sc. Perfusion Technology student
B.Sc. Medical Laboratory Technology	Best outgoing B.Sc. Medical Laboratory Technology student
Outgoing B. Sc. MLT student	Best outgoing B. Sc. MLT student obtaining the highest marks in Pathology in all 3 years at University Examination
M.Sc.,MLT (Haematology and Transfusion Medicine)	Best outgoing student in M.Sc.,MLT (Haematology and Transfusion Medicine)
TWO M,Sc., MLT students one each from Microbiology & Immunology and Clinical Biochemistry	TWO most meritorious students, one each from M.Sc. MLT Microbiology & Immunology and Clinical Biochemistry.

ANTHEM

Ch: St. John's! with pride my song resounds;
I hail thy pennant blue, gold, white.
St. John's! thy spirit in me bounds;
Be thou my guide my beacon light.

There stirs thy call within my heart
In thee this pledge I seal:
To raise the ill shall be my part,
To minister, to heal.
With ev'ry moment born in time,
Through deep eternity,
Thy vision will endure, sublime:
HE SHALL LIVE BECAUSE OF ME.

Sustained within God's grace I stand;
Thy yoke, so light, I bear:
Where're I toil, love guide my hand,
Inspire my promised care.
Love stoke my hopes, my fears belie;
Love set my courage free;
While yet my lips have breath to sigh:
HE SHALL LIVE BECAUSE OF ME.

Through India's far flung rustic lands,
Where need is most, I serve;
No bounds restrain my willing hands,
No efforts I reserve.
And on thy campus, high or low,
Where're my calling be,
In Thee my solemn oath shall grow:
HE SHALL LIVE BECAUSE OF ME.



**St. John's Medical College
St. John's National Academy of Health Sciences
Bengaluru - 560 034**

For more information contact:

Registrar

Admissions Office

St. John's National Academy of Health Sciences

Bengaluru- 560 034

Telephone : 080 49466030

080 49466031

Office Hours:

Monday-Friday : 09.00 hrs to 13.00 hrs

13.45 hrs to 16.30 hrs

Saturdays : 09.00 hrs to 13.00 hrs---

Website : www.stjohns.in

Email : sjmc.admission@stjohns.in