

Intermediate Risk is any of the following:

PSA greater than 10 less than 20

Gleason Score is 7

Clinical Stage is T2b

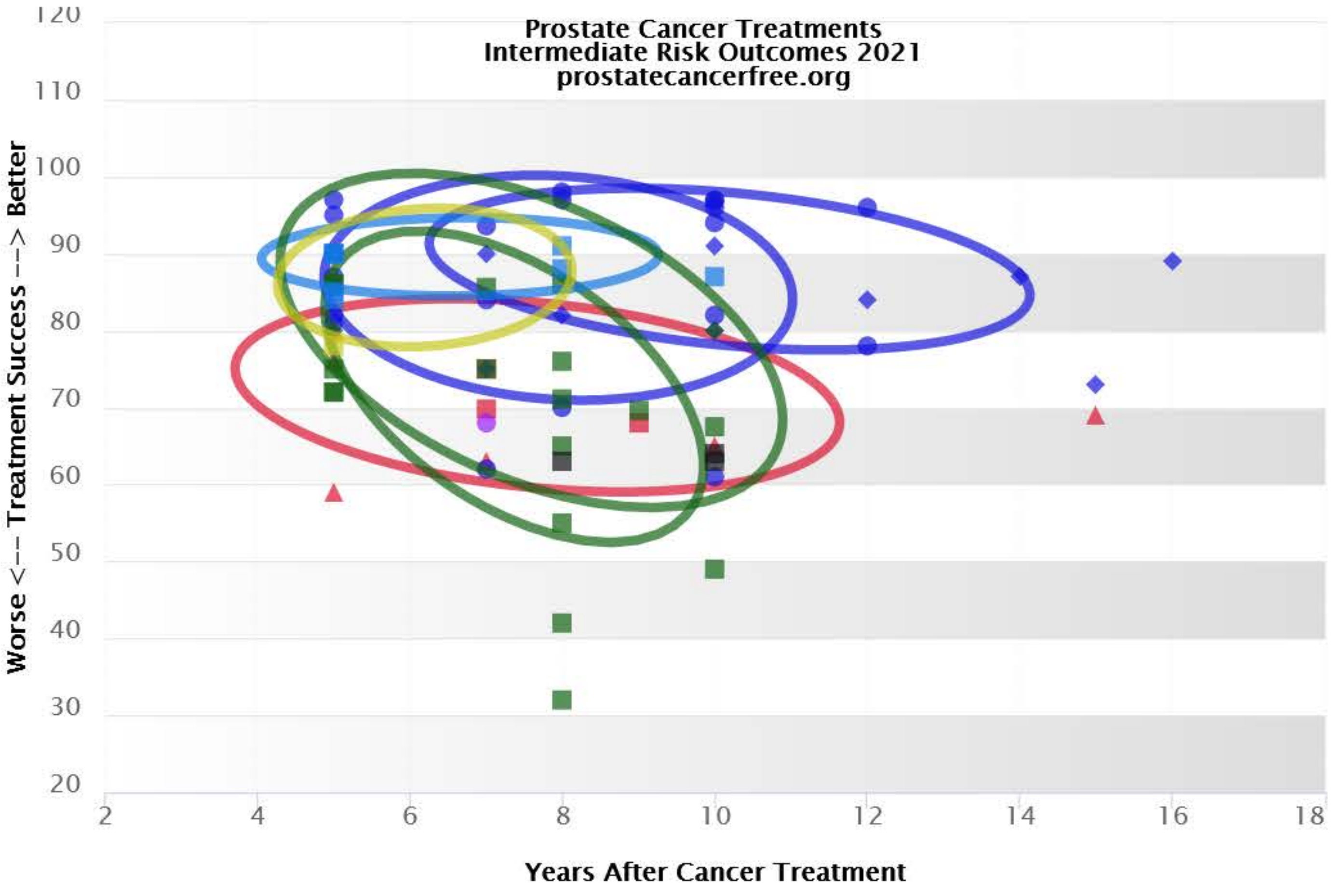
Clear Select All

Download Print

- Surgery
- Seeds EBRT
- EBRT ADT
- EBRT Seeds ADT

- Seeds
- EBRT
- HDR
- Seeds ADT

- HIFU
- Cryo
- Protons



prostatecancerfree.org

Compare Treatments
LOW RISK

Compare Treatments
HIGH RISK

How to Use the Graph

Add or remove treatment options above, using the checkboxes, for example Surgery vs Seeds. Percent PSA Progression Free is represented by the vertical axis. The bottom axis of the graph tracking time in years, in this case up to 16 years. Circles, triangles, diamonds or squares on the graph each represent a treatment study with a different number of patients. The midpoint of the ellipse shows on average how the patients responded to a that treatment. The direction of the ellipse, shows how the patients trended over time.

About the Data

Percent PSA Progression Free control results are the most sensitive means to measure initial treatment success and are used in these comparisons. A PSA Progression Free of 100% would mean that for all patients, the cancer has not returned, and no follow up treatment was necessary. These graphs are cancer control probabilities and not survival graphs. Survival in all groups is high regardless of treatment, as patients can often live for years despite failure of the initial treatment. Cancer control is the focus of this analysis. The longer a treatment can maintain a PSA Progression Free close to 100%, the more effective the Treatment. Each treatment ellipse is mathematically calculated to help you visualize how the patients are doing with the selected treatment.

For More Information:

- [Intermediate Risk References](#)

Prostate Cancer Free Home Page Facebook Twitter LinkedIn YouTube News Feed

PROSTATE CANCER FREE FOUNDATION

Treatments Prostate Cancer Patients The Foundation

Get The Study

Treatment Tutorial

This tutorial will lead you through the process of comparing prostate cancer treatment outcomes across low, intermediate and high risk patients. The treatments included in this study are Prostate Surgery or Prostatectomy, (Retropubic, Laparoscopic, and Robotic), Brachytherapy or Seeds, High Dose Rate Radiation, HDR, External Beam Radiation Therapy or EBRT, Androgen Deprivation Therapy, ADT, or Hormone Treatment, Proton Therapy, High-Intensity Focused Ultrasound, HIFU, Cryotherapy, Cryo and Hypo-Fractionated External Beam Radiation Therapy. For more advanced prostate cancer, treatments are combined to increase effectiveness.