

# Residences 02 · 04 · 06 · 08 · 10

1 Bedroom · 1 Bath

Floors 7 to 11

Interior 598 sft

Terrace 91 sft

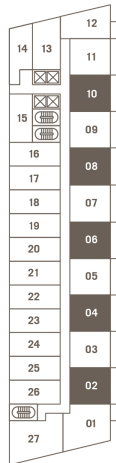
Total 689 sft

Floor 6

Interior 598 sft

Terrace 367 sft

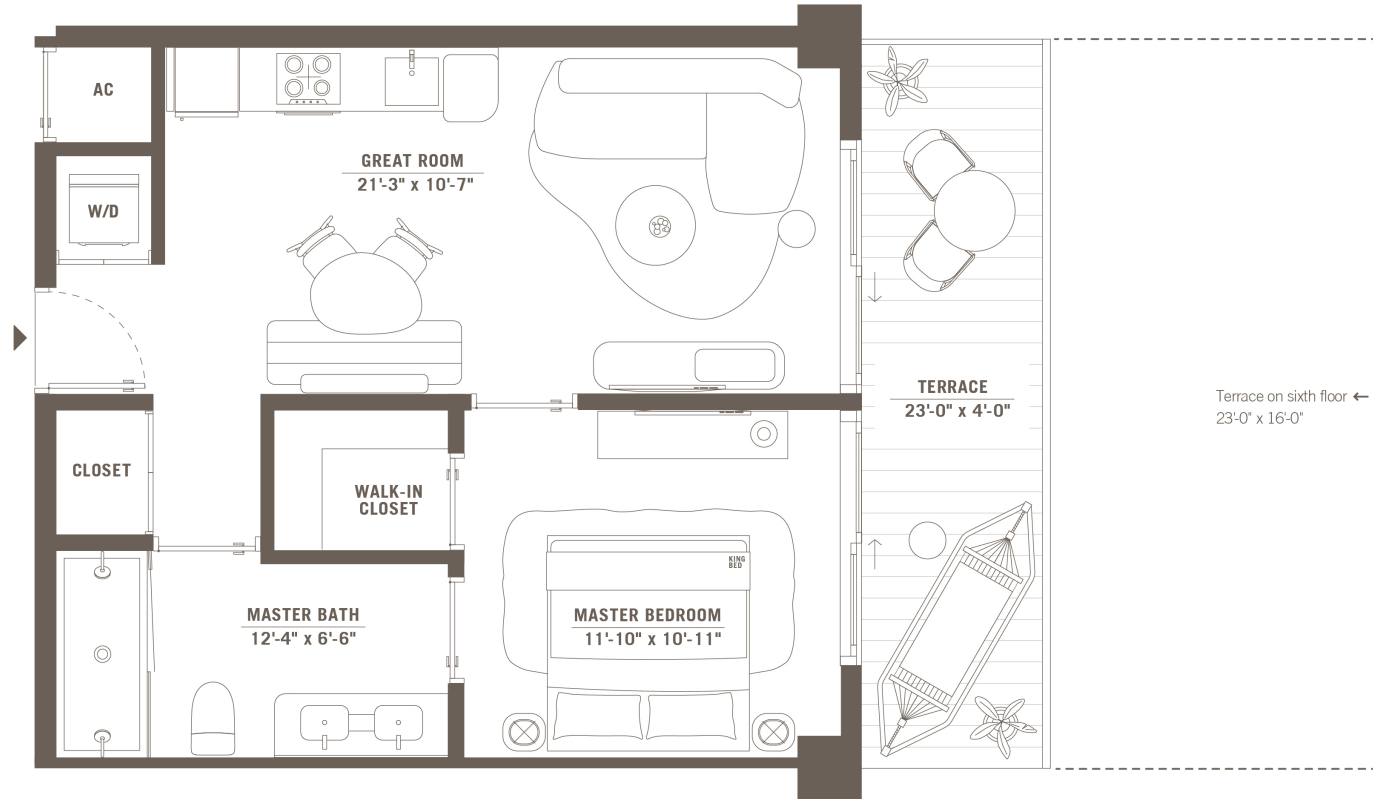
Total 965 sft



# The Standard

## RESIDENCES

### MIDTOWN MIAMI



**ROSSO** Development

Stated dimensions are measured to the exterior boundaries of the exterior walls and the centerline of interior demising walls and in fact vary from the dimensions that would be determined by using the description and definition of the "Unit" set forth in the Declaration (which generally only includes the interior airspace between the perimeter walls and excludes interior structural components). For your reference, the area of the Unit, determined in accordance with those defined unit boundaries, is set forth in the Declaration included as an Exhibit to the Prospectus. Note that measurements of rooms set forth on this floor plan are generally taken at the greatest points of each given room (as if the room were a perfect rectangle), without regard for any cutouts. Accordingly, the area of the actual room will typically be smaller than the product obtained by multiplying the stated length times width. All dimensions are approximate and may vary with actual construction, and all floor plans and development plans are subject to change.

# Residences 03 · 05 · 07 · 09 · 11

1 Bedroom · 1 Bath

Floors 7 to 11

Interior 598 sft

Terrace 91 sft

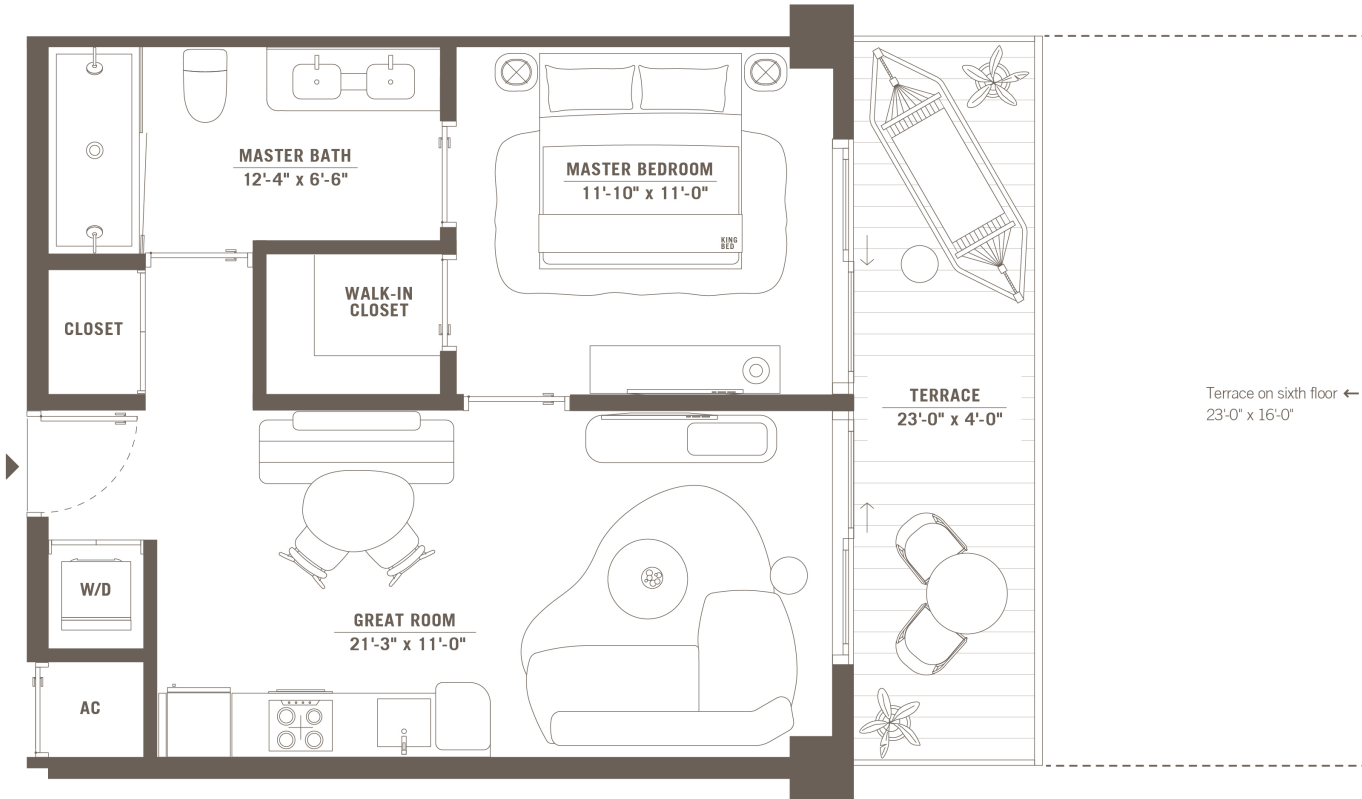
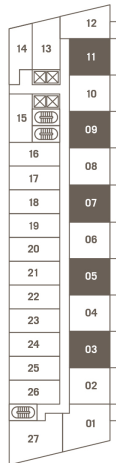
Total 689 sft

Floor 6

Interior 598 sft

Terrace 367 sft

Total 965 sft



# The Standard

## RESIDENCES

### MIDTOWN MIAMI



**ROSSO** Development

Stated dimensions are measured to the exterior boundaries of the exterior walls and the centerline of interior demising walls and in fact vary from the dimensions that would be determined by using the description and definition of the "Unit" set forth in the Declaration (which generally only includes the interior airspace between the perimeter walls and excludes interior structural components). For your reference, the area of the Unit, determined in accordance with those defined unit boundaries, is set forth in the Declaration included as an Exhibit to the Prospectus. Note that measurements of rooms set forth on this floor plan are generally taken at the greatest points of each given room (as if the room were a perfect rectangle), without regard for any cutouts. Accordingly, the area of the actual room will typically be smaller than the product obtained by multiplying the stated length times width. All dimensions are approximate and may vary with actual construction, and all floor plans and development plans are subject to change.

# Residences 07

1 Bedroom • 1 Bath

Floor 6

Interior 598 sft

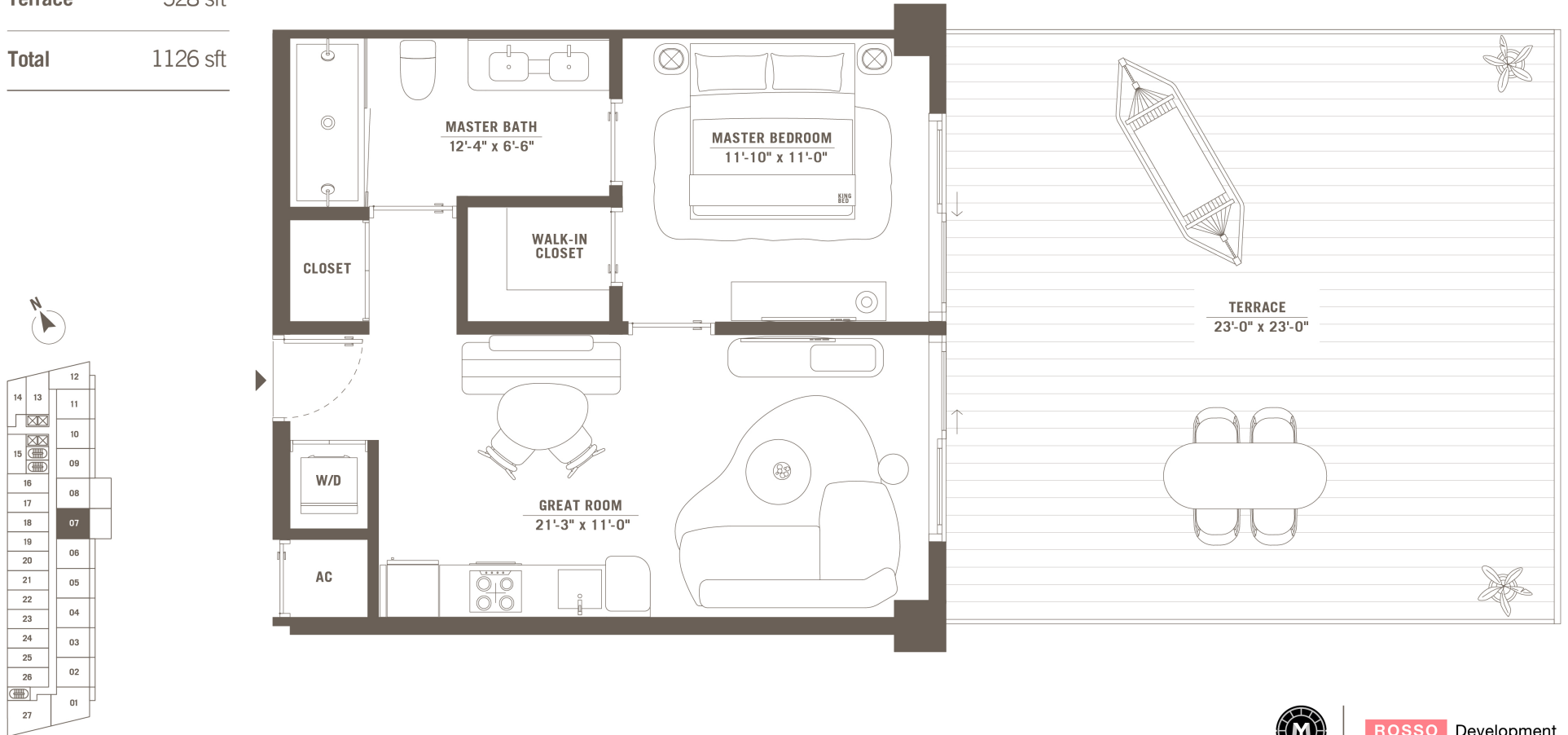
Terrace 528 sft

Total 1126 sft

The Standard

RESIDENCES

MIDTOWN MIAMI



ROSSO Development

Stated dimensions are measured to the exterior boundaries of the exterior walls and the centerline of interior demising walls and in fact vary from the dimensions that would be determined by using the description and definition of the "Unit" set forth in the Declaration (which generally only includes the interior airspace between the perimeter walls and excludes interior structural components). For your reference, the area of the Unit, determined in accordance with those defined unit boundaries, is set forth in the Declaration included as an Exhibit to the Prospectus. Note that measurements of rooms set forth on this floor plan are generally taken at the greatest points of each given room (as if the room were a perfect rectangle), without regard for any cutouts. Accordingly, the area of the actual room will typically be smaller than the product obtained by multiplying the stated length times width. All dimensions are approximate and may vary with actual construction, and all floor plans and development plans are subject to change.

# Residences 08

1 Bedroom • 1 Bath

Floor 6

Interior 598 sft

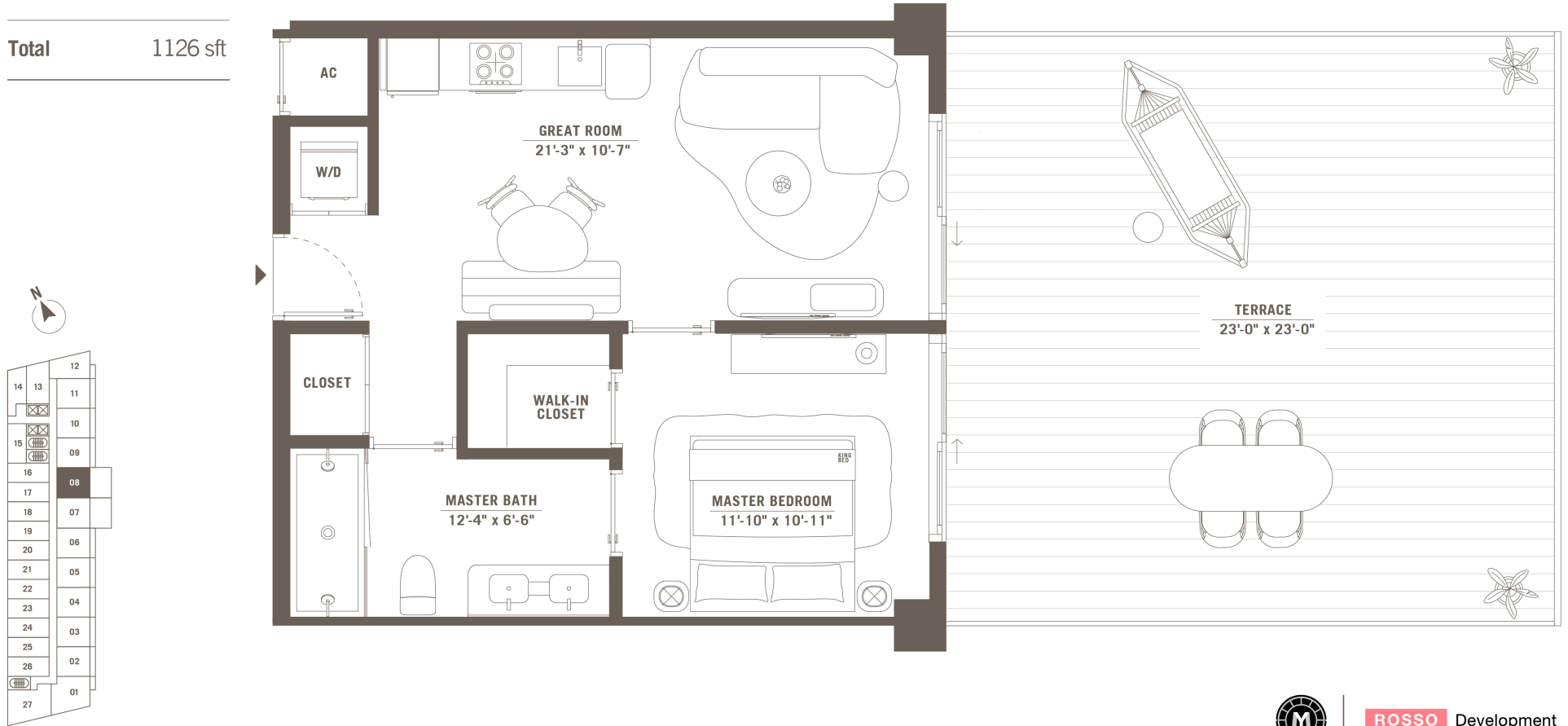
Terrace 528 sft

Total 1126 sft

The Standard

RESIDENCES

MIDTOWN MIAMI



ROSSO Development

Stated dimensions are measured to the exterior boundaries of the exterior walls and the centerline of interior demising walls and in fact vary from the dimensions that would be determined by using the description and definition of the "Unit" set forth in the Declaration (which generally only includes the interior airspace between the perimeter walls and excludes interior structural components). For your reference, the area of the Unit, determined in accordance with those defined unit boundaries, is set forth in the Declaration included as an Exhibit to the Prospectus. Note that measurements of rooms set forth on this floor plan are generally taken at the greatest points of each given room (as if the room were a perfect rectangle), without regard for any cutouts. Accordingly, the area of the actual room will typically be smaller than the product obtained by multiplying the stated length times width. All dimensions are approximate and may vary with actual construction, and all floor plans and development plans are subject to change.



# Residence 12

1 Bedroom • 1 Bath

Floors 2 to 5

Interior 817 sft

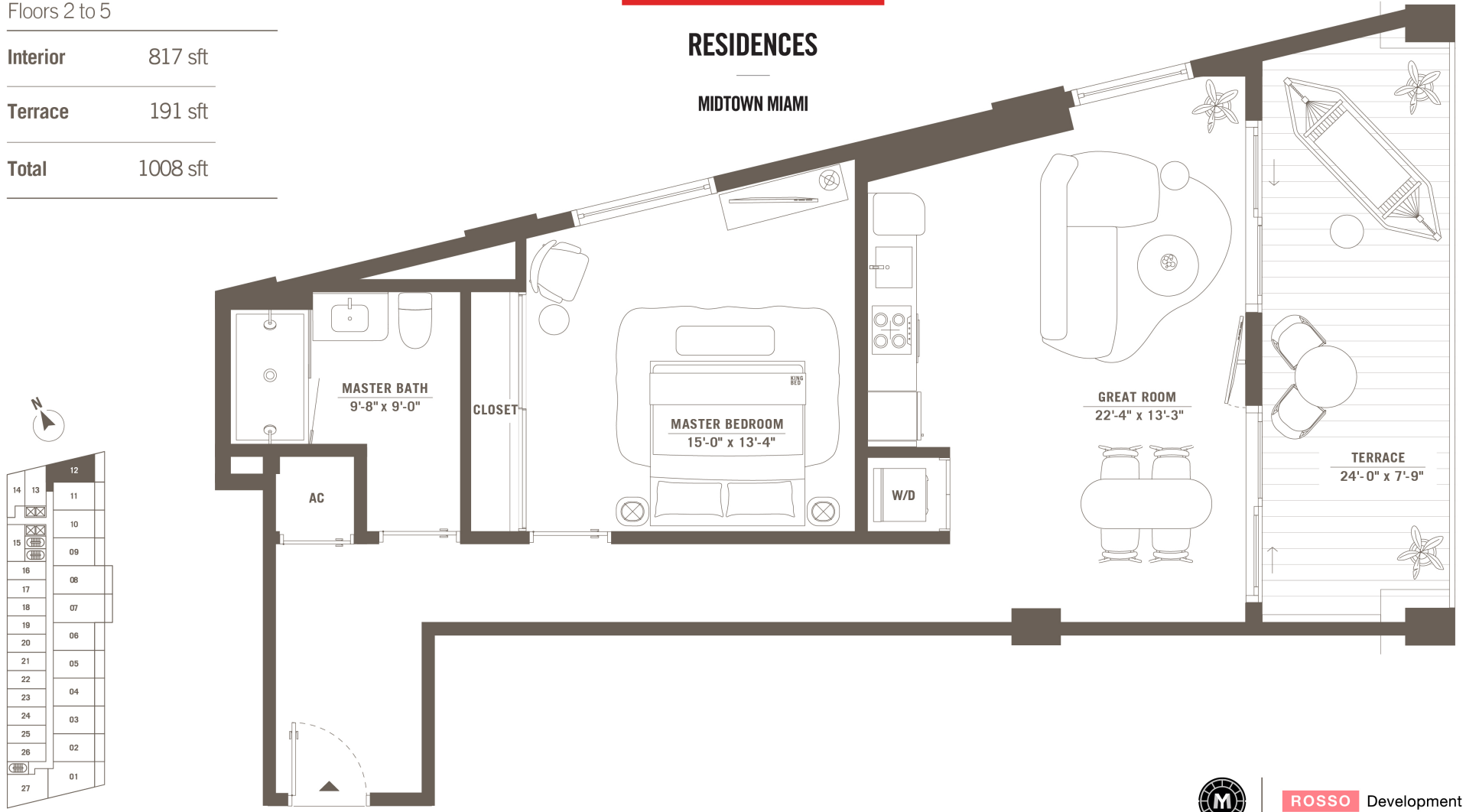
Terrace 191 sft

Total 1008 sft

## The Standard

### RESIDENCES

MIDTOWN MIAMI



**ROSSO** Development

Stated dimensions are measured to the exterior boundaries of the exterior walls and the centerline of interior demising walls and in fact vary from the dimensions that would be determined by using the description and definition of the "Unit"; set forth in the Declaration (which generally only includes the interior airspace between the perimeter walls and excludes interior structural components). For your reference, the area of the Unit, determined in accordance with those defined unit boundaries, is set forth in the Declaration included as an Exhibit to the Prospectus. Note that measurements of rooms set forth on this floor plan are generally taken at the greatest points of each given room (as if the room were a perfect rectangle), without regard for any cutouts. Accordingly, the area of the actual room will typically be smaller than the product obtained by multiplying the stated length times width. All dimensions are approximate and may vary with actual construction, and all floor plans and development plans are subject to change.

# Residence 12

1 Bedroom - 1 Bath

Floors 7 to 11



## RESIDENCES

MIDTOWN MIAMI

Interior 587 sft

Terrace 46 sft

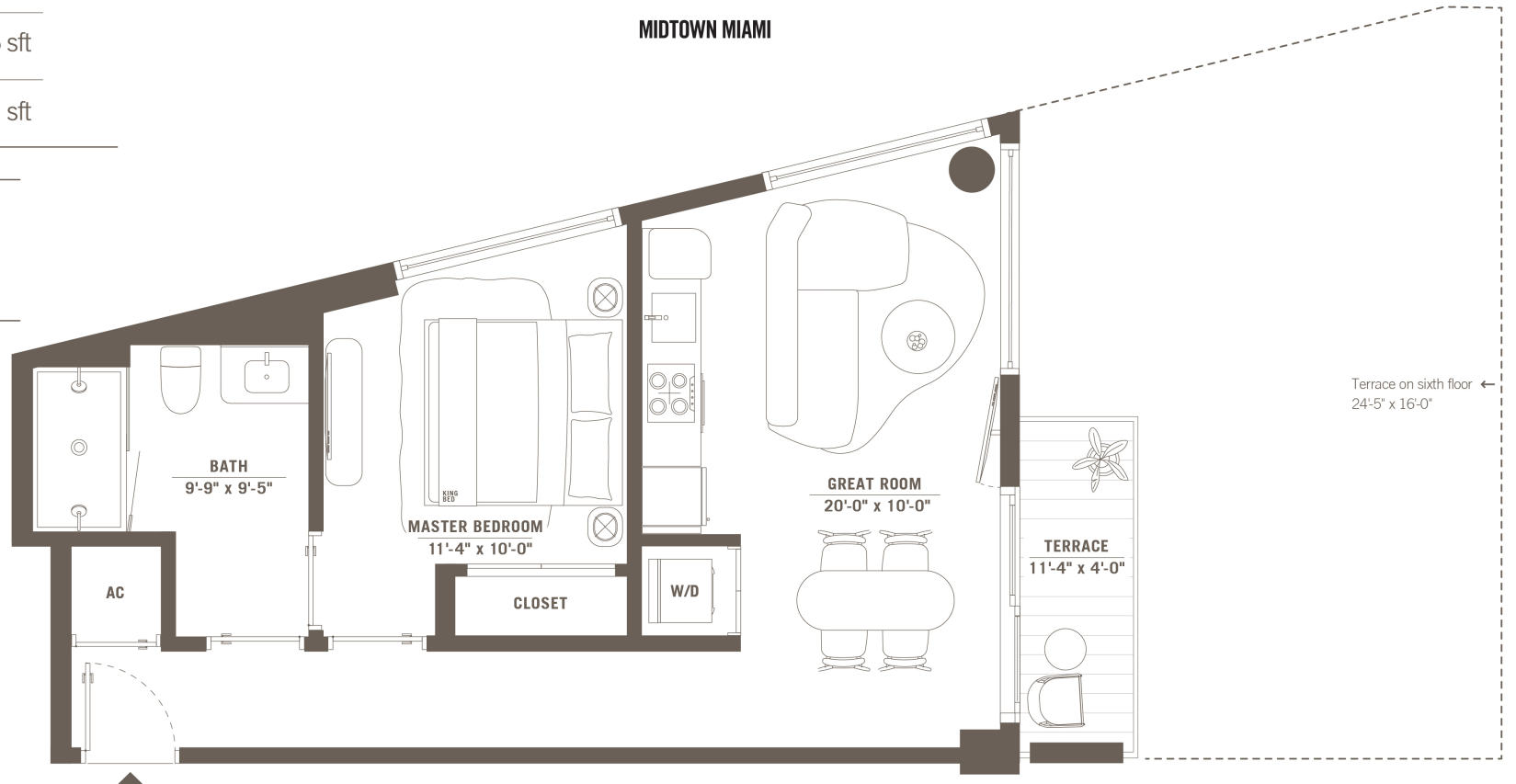
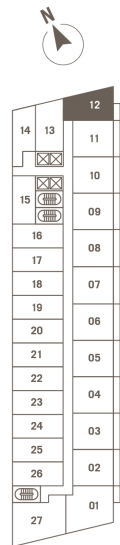
Total 633 sft

Floor 6

Interior 587 sft

Terrace 376 sft

Total 963 sft



**ROSSO** Development

Stated dimensions are measured to the exterior boundaries of the exterior walls and the centerline of interior demising walls and in fact vary from the dimensions that would be determined by using the description and definition of the "Unit" set forth in the Declaration (which generally only includes the interior airspace between the perimeter walls and excludes interior structural components). For your reference, the area of the Unit, determined in accordance with those defined unit boundaries, is set forth in the Declaration included as an Exhibit to the Prospectus. Note that measurements of rooms set forth on this floor plan are generally taken at the greatest points of each given room (as if the room were a perfect rectangle), without regard for any cutouts. Accordingly, the area of the actual room will typically be smaller than the product obtained by multiplying the stated length times width. All dimensions are approximate and may vary with actual construction, and all floor plans and development plans are subject to change.