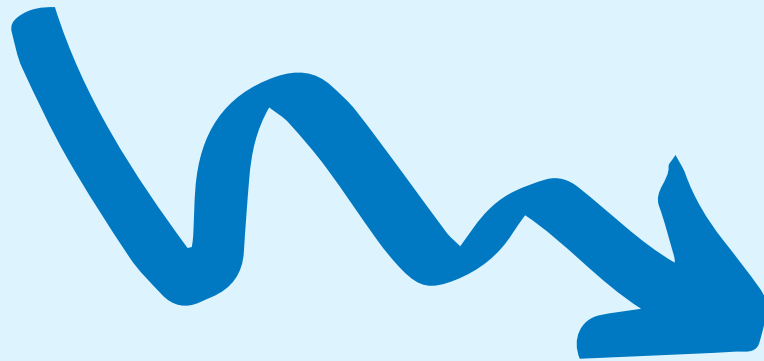


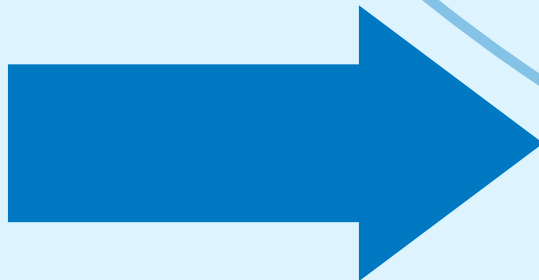
**EVERYTHING
YOU *NEED* TO
KNOW ABOUT...**



iTera - *Bio*

How does it **work**?

The device, much like iTeraCare, works on **terahertz frequency**. It releases *8-1000 um precise* THZ waves compatible with the human body to **replenish** cellular energy! It allows for deep penetration into the subcutaneous up to 4-5 cm, which is **safe and energizing**.

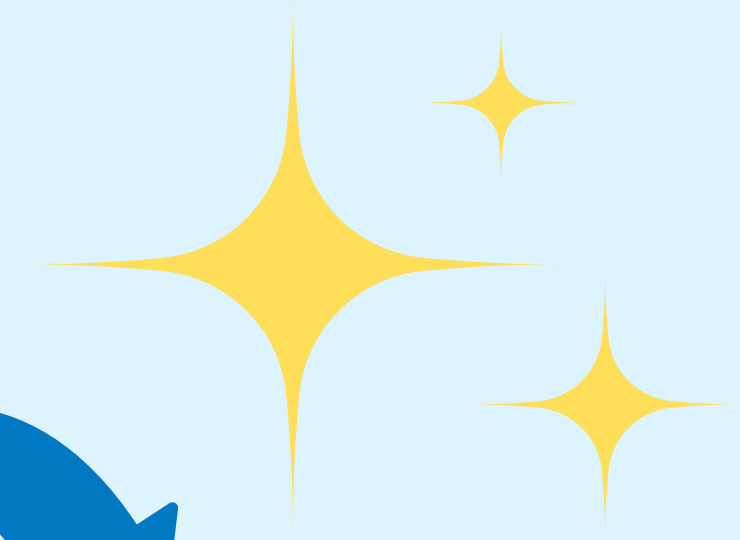
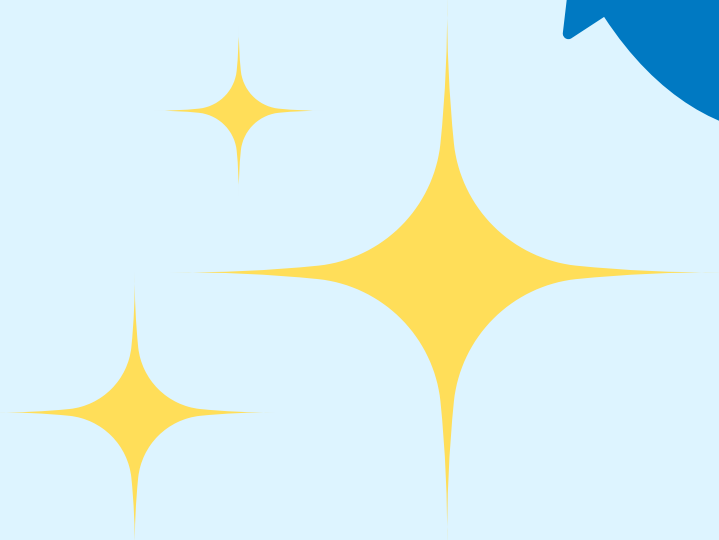


The device also possesses *1 MHz Bio - RF magnetic energy*, which improves circulation and stimulates cellular immunity!

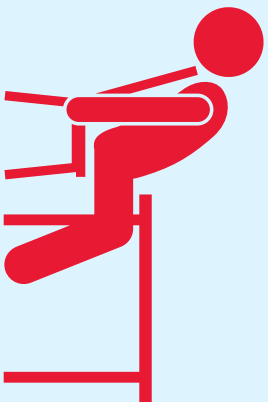
**DOUBLE
ENERGY**



**BETTER
EFFECT**



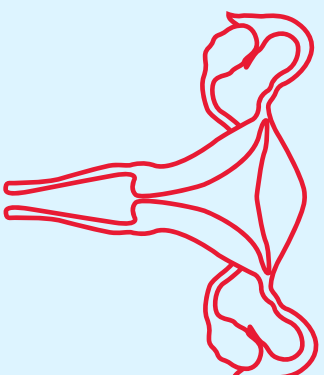
**70 % of population
suffers from **problems**
such as:**



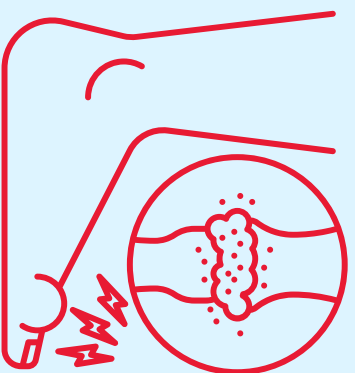
lethargy



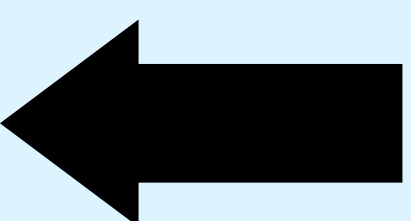
edema



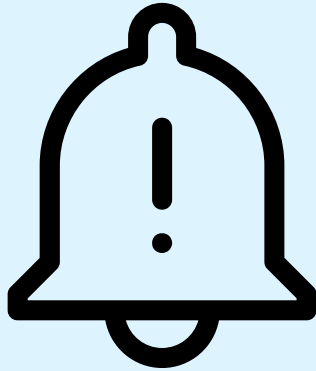
**menstrual
disorders**



gout



**Do you belong
in this
demographic?**



The iTera - *Bio* is

suitable for...

- ▶ **people with a cold and damp physique**
- ▶ **people that work in an office**
- ▶ **postpartum mothers**
- ▶ **obese people**
- ▶ **middle aged and elderly**
- ▶ **people who sit or stand for longer periods of time**
- ▶ **people with hypertension, high cholesterol and high blood sugar**

**15 minutes of
therapy a day
equals to:**

**180 minutes of
moxibustion**

**20 times of
cupping**

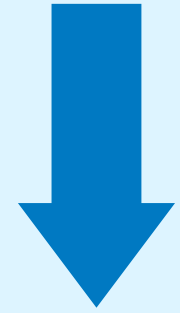
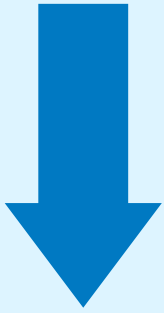
**8 hours of
bare hands
massage**

**60 minutes
of sweating**

**30 minutes
of Gua Sha**

**60 minutes
of aerobic**

**And using this *device*,
you can enjoy the
following *benefits*...**



activates the cells

**dispels cold
and dampness**

**promotes
circulation**

**promotes
metabolism**



burns fat

**purifies
the body**

**relieves
inflammation**

**shapes the
body & slows
down aging**