

ENGINEER'S NOTES:

- CONSTRUCTION CONTRACTOR AGREES THAT IN ACCORDANCE WITH GENERALLY ACCEPTED CONSTRUCTION PRACTICES, CONSTRUCTION CONTRACTORS WILL BE REQUIRED TO ASSUME SOLE AND COMPLETE RESPONSIBILITY FOR JOB SITE CONDITIONS DURING THE COURSE OF CONSTRUCTION OF THE PROJECT, INCLUDING SAFETY OF ALL PERSONS AND PROPERTY; THAT THIS REQUIREMENT SHALL BE MADE TO APPLY CONTINUOUSLY AND NOT BE LIMITED TO NORMAL WORKING HOURS, AND CONSTRUCTION CONTRACTOR FURTHER AGREES TO DEFEND, INDEMNIFY AND HOLD DESIGN PROFESSIONAL HARMLESS FROM ANY AND ALL LIABILITY, REAL OR ALLEGED, IN CONNECTION WITH THE PERFORMANCE OF WORK ON THIS PROJECT, EXCEPTING LIABILITY ARISING FROM THE SOLE NEGLIGENCE OF DESIGN PROFESSIONAL.
- UNAUTHORIZED CHANGES & USES: THE ENGINEER PREPARING THESE PLANS WILL NOT BE RESPONSIBLE FOR, OR LIABLE FOR, UNAUTHORIZED CHANGES TO OR USES OF THESE PLANS. ALL CHANGES TO THE PLANS MUST BE IN WRITING AND MUST BE APPROVED BY THE PREPARER OF THESE PLANS.

SPECIFICATION REFERENCE NOTE:

THE WORK ON THIS PROJECT SHALL BE DONE IN ACCORDANCE WITH THE FOLLOWING SPECIFICATIONS AND THESE PLANS. IN THE EVENT OF CONFLICT BETWEEN THE SPECIFICATIONS AND THESE PLANS, THE PLANS SHALL TAKE PRECEDENCE. IN THE ABSENCE OF CONFLICT BETWEEN THE SPECIFICATIONS AND THESE PLANS, THE PLANS WILL SUPPLEMENT AND ADD TO THE SPECIFICATIONS. THE SPECIFICATIONS RELATIVE TO THESE PLANS ARE:

PROJECT MANUAL - PROJECT CHEM-2020-01 ENTERPRISE WATER SYSTEM REPLACEMENT

MARICOPA ASSOCIATION OF GOVERNMENTS, "UNIFORM STANDARD DETAILS FOR PUBLIC WORKS CONSTRUCTION", CURRENT EDITION (MAG DETAILS).

THE 2006 IBC, 2006 IPC, 2006 IFC, 2010 ADA STANDARDS FOR ACCESSIBLE DESIGN.

BASIS OF HORIZONTAL CONTROL:

PROJECT BASE CONTROL POINT (CONTROL PT NO. 1)
DESCRIPTION - 3" BRASS CAP ON 3" I.P. IN CONCRETE WITH CENTER PUNCH.
COORDINATES - N: 2022362.5903, E: 7643810.7679

HORIZONTAL DATUM - NAD83 (GCSN96)
PROJECTION - SPC CA ZONE 5
LINEAR UNITS - US FOOT
GEOID - GEOID 12A

HORIZONTAL CONTROL IS ADJUSTED TO GROUND BEARINGS AND COORDINATES.
- CONTROL PT NO. 1 HELD FOR GROUND ORIGIN POINT
- CONVERGENCE (GROUND AZIMUTH) = 2" 02' 51.5495"
- COMBINED SCALE FACTOR = 1.000086443995 (GRID TO GROUND)

BENCHMARK:

THE ELEVATIONS SHOWN HEREON ARE BASED ON CONTROL POINT NO. 1
3" BRASS CAP ON 3" I.P. IN CONCRETE WITH CENTER PUNCH.
N: 2022362.5903
E: 7643810.7679
ELEVATION = 485.842 (NAVD88, U.S. FEET)

BASIS OF TOPOGRAPHY:

AERIAL TOPOGRAPHIC MAPPING PERFORMED BY NORTH AMERICAN MAPPING DATED 7/20/10. PROJECT: CHEMEHUEVI ADDITION - SOUTH.

ABBREVIATIONS:

- BC BEGIN CURVE
- BCR BEGIN CURB RETURN
- BW BACK OF SIDEWALK
- CF CURB FACE
- CL CENTERLINE
- CY CUBIC YARDS
- EA EACH
- EC END CURVE
- ECR END CURB RETURN
- EG EXIST. GRADE
- EP EDGE OF PAVEMENT
- EXIST EXISTING
- FF FINISHED FLOOR
- FG FINISHED GRADE
- FL FLOW LINE
- FS FINISHED SURFACE
- GB GRADE BREAK
- INV INVERT
- LF LINEAR FEET
- LANDSCP LANDSCAPE
- MAG MARICOPA ASSOCIATION OF GOVERNMENTS
- NG NATURAL GROUND
- ONP OVER HEAD POWERLINES
- PCG PORTLAND CEMENT CONCRETE
- PIP PROTECT IN PLACE
- PL PROPERTY LINE
- PRC POINT OF REVERSE CURVATURE
- PUE/DE PUBLIC UTILITY EASEMENT/DRAINAGE ESMT.
- RPP REDUCED PRESSURE PRINCIPLE
- RW RIGHT-OF-WAY
- SF SQUARE FOOT
- STA STATION
- TC TOP OF CURB
- TF TOP OF FOOTING
- TG TOP OF GRATE
- TR TOP OF RAMP
- TW TOP OF WALL
- TYP TYPICAL

SYMBOLS:

- (S) EXISTING SEWER MANHOLE
- (P) PROPOSED SEWER MANHOLE
- (T) EXISTING TELEPHONE PEDESTAL
- (J) EXISTING ELECTRICAL JUNCTION BOX
- (E) EXISTING ELECTRICAL PEDESTAL
- (TF) ELECTRIC TRANSFORMER
- (R) TELEPHONE RISER
- (V) WATER VALVE
- (C) CENTERLINE
- o--- EXISTING GAS MAIN
- s--- EXISTING SEWER MAIN
- w--- EXISTING WATER MAIN
- w--- PROPOSED WATER MAIN
- s--- PROPOSED SEWER MAIN
- (X) CONSTRUCTION NOTE NUMBER
- (B) PROJECT BENCHMARK
- (P) EXISTING POWER POLE
- OWE--- EXIST. OVERHEAD ELEC. LINE

CHEMEHUEVI INDIAN TRIBE

ENTERPRISE MOBILE HOME PARK

WATER IMPROVEMENTS

WATER CONSTRUCTION NOTES & QUANTITY ESTIMATES			
NO.	DESCRIPTION	UNIT	QTY.
1	6" C900, PRESSURE CLASS 200, PVC WATER LINE. TRENCH AND BEDDING PER TECHNICAL SPECIFICATIONS SECTION 04601.	LF	1354
2	6" MJ X MJ- 45 DEGREE BEND	EA	4
3	6" MJ X MJ- 22.5 DEGREE BEND	EA	7
4	6" MJ X MJ- 11.25 DEGREE BEND	EA	3
5	REMOVE AND SALVAGE EXISTING FIRE HYDRANT. REMOVE EXISTING HYDRANT LATERAL.	EA	3
6	6"x6"x6" DI MJ TEE	EA	4
7	FIRE HYDRANT INSTALLATION PER MAG STD. 360 -1. WATEROUS MODEL W687-250.	EA	3
8	ANCHOR BLOCK FOR VERTICAL BENDS PER MAG STANDARD 381	EA	1
9	THRUST BLOCK PER MAG STD. 380.	EA	19
10	DOMESTIC SERVICE CONNECTION. 1" SADDLE TAP AND 1" CORP STOP AT MAIN. INSTALL METER BOX AND METER SETTER, OLDCASTLE DURALITE MODEL 1118-18 WITH TIER 22 POLYMER CONCRETE LID AND, FORD 70 SERIES COPPERSETTER FOR 5/8" X 3/4" METER. SEE DETAIL ON SHEET 13.	EA	87
11	2" CURB STOP WITH FLUSHING PIPE MAG STANDARD 390 TYPE 'B'	EA	1
12	6" RESILIENT SEAT GATE VALVE WITH VALVE BOX TYPE 'A' PER MAG STANDARD 391-1 AND, DEBRIS CAP TYPE 'A' PER MAG STANDARD 392.	EA	10
13	TRACER WIRE AND UNDERGROUND LOCATE TAPE. WIRE TO BE AWG 12, AFFIXED TO TOP OF PIPE WITH CINCH TIE OR PIPE WRAP TAPE. FASTEN AT INTERVALS SUFFICIENT TO PREVENT WIRE FROM DRAPING OVER SIDE OF PIPE. EXTEND THE WIRE INTO METER BOXES AND PROVIDE EXCESS FOR CONNECTION OF LOCATE EQUIPMENT. LOCATE TAPE TO BE PLACED ON TOP OF INITIAL TRENCH BACKFILL, 12" ABOVE TOP OF PIPE.	LF	3668
14	6" X 6" TAPPING SLEEVE FOR ACP PER MAG STANDARD 340.	EA	1
15	2" SADDLE TAP, 2" HDPE LATERAL AND 2" ANGLE STOP FOR IRRIGATION METER INSTALLATION. INSTALL METER BOX, OLDCASTLE DURALITE MODEL 2436 WITH COMPOSITE LID.	EA	4
16	1" HDPE FOR SERVICE CONNECTION.	LF	2950
17	6" COUPLING, ROMAC INDUSTRIES, MACRO EXTENDED RANGE COUPLING OR SIMILAR.	EA	3
18	COPPERHEAD WIRE SNAKE PIT ROADWAY ACCESS POINT WITH GREEN-SINGLE TERMINAL LID. SEE SHEET 2 FOR LOCATIONS.	EA	4
19	1-1/2" WILKINS PRESSURE REDUCING BACKFLOW PREVENTER MODEL 975XLSE. SEE DETAIL ON SHEET 13.	EA	4
20	ENCLOSURE FOR BACKFLOW PREVENTER, GUARDSHACK MODEL GS-3, OR SIMILAR. SEE DETAIL ON SHEET 13.	EA	4
21	REMOVE AND SALVAGE EXISTING BACKFLOW PREVENTER.	EA	1
22	INSERT LINE STOP OR FREEZE PLUG EXISTING SMALL DIAMETER WATER LINE AND INSTALL NEW, OPERATIONAL RESILIENT SEAT GATE VALVE. PROVIDE INTERIM RE-CONNECTION TO THE EXISTING WATER LINE TO ALLOW FOR SYSTEM SUPPLY DURING CONSTRUCTION. PERMANENTLY CAP THE SMALL DIAMETER LINE IMMEDIATELY AFTER THE NEWLY INSTALLED VALVE UPON COMPLETION OF CONSTRUCTION. ABANDON THE REMAINING LINE IN PLACE.	EA	3



VICINITY MAP

WATER NOTES TO CONTRACTOR:

ALL MECHANICAL JOINTS, VALVE BODIES AND FITTINGS SHALL BE POLYETHYLENE WRAPPED AND SECURED WITH 30 MIL PIPE WRAP TAPE TO PREVENT CONTACT WITH NATIVE EARTH AND BEDDING MATERIAL. FITTINGS SHALL ALSO BE FUSION BONDED EPOXY COATED. THE POLY WRAP REQUIREMENT ALSO APPLIES TO CORP STOPS FOR SERVICE LATERALS AND FLUSHING VALVES.

FITTINGS FOR PIPE SIZE 4" AND UP SHALL USE MEGALUG MECHANICAL JOINTS, OR FLANGE IN COMBINATION, AS SHOWN ON THE PLANS.

WHERE MAIN LINE DEFLECTION IS NOT IDENTICAL TO THE ANGLE PROVIDED BY A FITTING, PULL THE BELL AND SPIGOT JOINTS OF ADJACENT PIPE TO ACHIEVE DESIRED ANGLE. DO NOT EXCEED 2 DEGREES IN ANY SINGLE PULLED JOINT. DO NOT DEFLECT AT MECHANICAL OR FLANGE JOINTS.

THE OUTLINES OF MOBILE HOME STRUCTURES SHOWN ON THESE PLANS ARE THE PORTION OF THE STRUCTURE BUILT ON A CHASSIS. THE OUTLINES DO NOT INCLUDE ANY PORCHES, DECKS OR ADDED STRUCTURES.

THE TOTAL LENGTH OF 1" HDPE SERVICE LINES IS 2,850 LF FROM THE WATER MAIN TO THE ENDS OF THE SERVICE LINES AS DRAWN. THE ENDS OF THE HDPE WATER SERVICE LINES SHOWN ON THESE PLANS ARE GENERALLY TERMINATED AT A POINT NEAR THE FRONT OF THE MOBILE STRUCTURE BUILT ON A CHASSIS. THIS WILL NOT BE THE ULTIMATE LOCATION OF THE END OF THE SERVICE LINES. THIS QUANTITY IS THEREFORE NOT THE ACTUAL QUANTITY OF PIPE NEEDED.

LEGEND:

- (Symbol) SYMBOL IN PROFILE DENOTES POSSIBLE LOCATION OF EXISTING CONDUIT OR PIPE CROSSING
- (Symbol) SYMBOL IN PROFILE DENOTES LOCATION OF PROPOSED CONDUIT OR PIPE CROSSING
- (Symbol) TRACER WIRE ACCESS POINT LOCATION

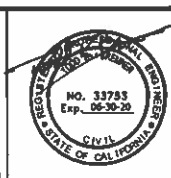
SHEET INDEX:

TITLE SHEET	1
SHEET INDEX	2
WATER LINE A STA. 10+00.00 TO 14+75.00	3
WATER LINE A STA. 14+75.00 TO 18+50.00	4
WATER LINE A STA. 18+50.00 TO 22+25.00	5
WATER LINE A STA. 22+25.00 TO 26+19.06	6
WATER LINE B STA. 10+00.00 TO 13+00.00	7
WATER LINE B STA. 13+00.00 TO 15+33.21	8
WATER LINE C STA. 10+00.00 TO 12+50.00	9
WATER LINE C STA. 12+50.00 TO 15+15.02	10
EXISTING 8" WATER LINE "A" ST. STA. 10+00.00 TO 13+00.00	11
EXISTING 8" WATER LINE "A" ST. STA. 13+00.00 TO 15+01.94	12
DETAILS	13

REVISIONS			
REV	DATE	DESCRIPTION	BY

PREPARED BY:

DOUBLE R
ENGINEERING SERVICES, INC.
60 ACOMA BOULEVARD S., SUITE B-104
LAKE HAVASU CITY, ARIZONA 86403
(928) 854-8800

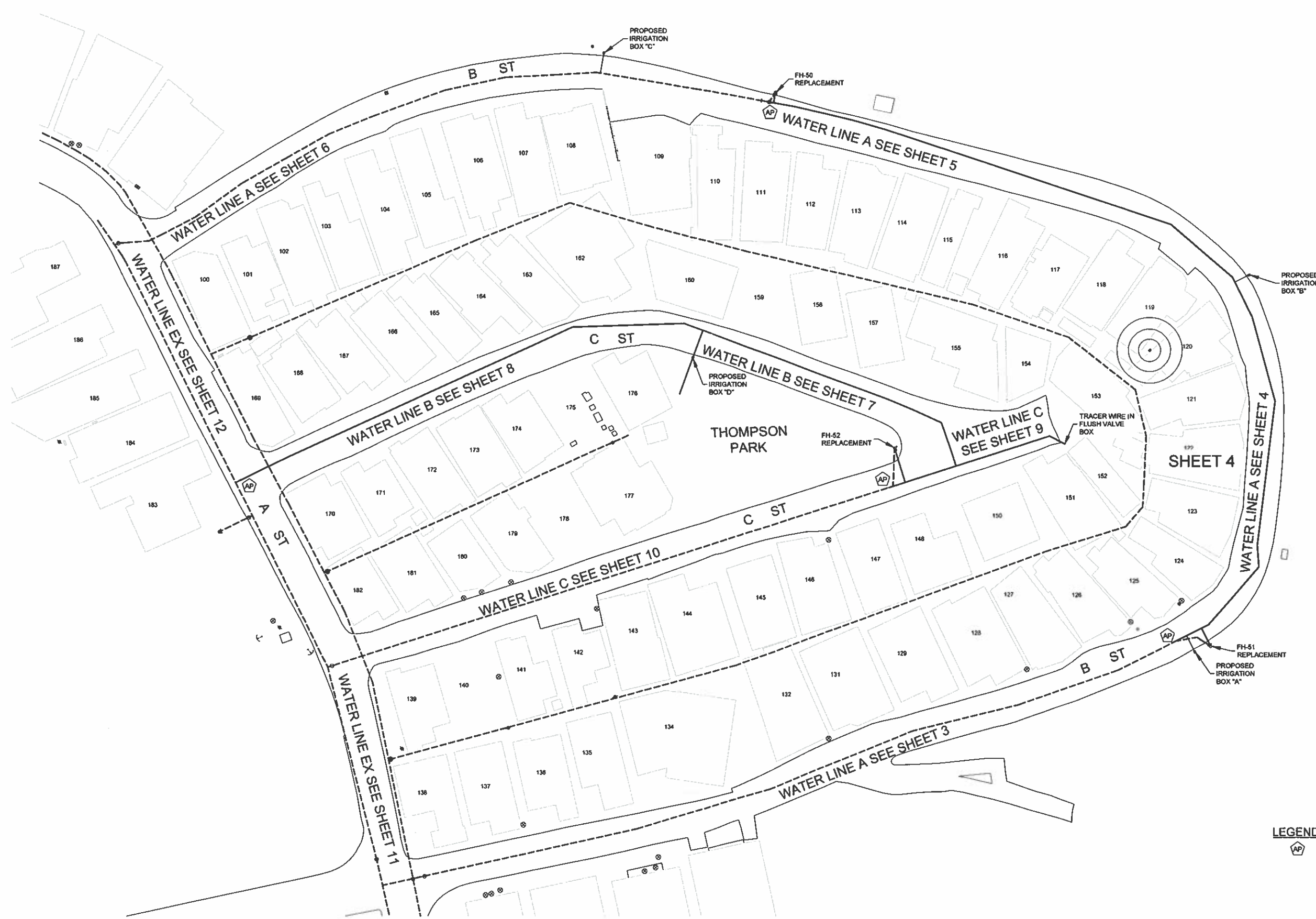


PREPARED FOR:

CHEMEHUEVI INDIAN TRIBE

P.O. BOX 1976
HAVASU LANDING, CA. 92363
(760) 858-1116

TITLE SHEET			
SCALE:	DESIGNER:	APPROVED BY:	DRAWN BY:
NONE	DJL	TRB	JRS
DATE: 05/21/20	SURVEY: N/A	DWG: 1210 - WATER TITLE.DWG	
HAVASU LANDING, CHEMEHUEVI VALLEY, CA.			PAGE: 1 OF 13



LEGEND:
 TRACER WIRE ACCESS POINT LOCATION

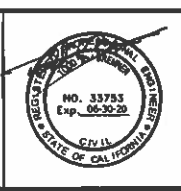


REVISIONS			
REV	DATE	DESCRIPTION	BY

PREPARED BY:

DOUBLE R
 ENGINEERING SERVICES, INC.
 60 ACOMA BOULEVARD S., SUITE B-104
 LAKE HAVASU CITY, ARIZONA 86403
 (928) 854-8800

© 2004



PREPARED FOR:

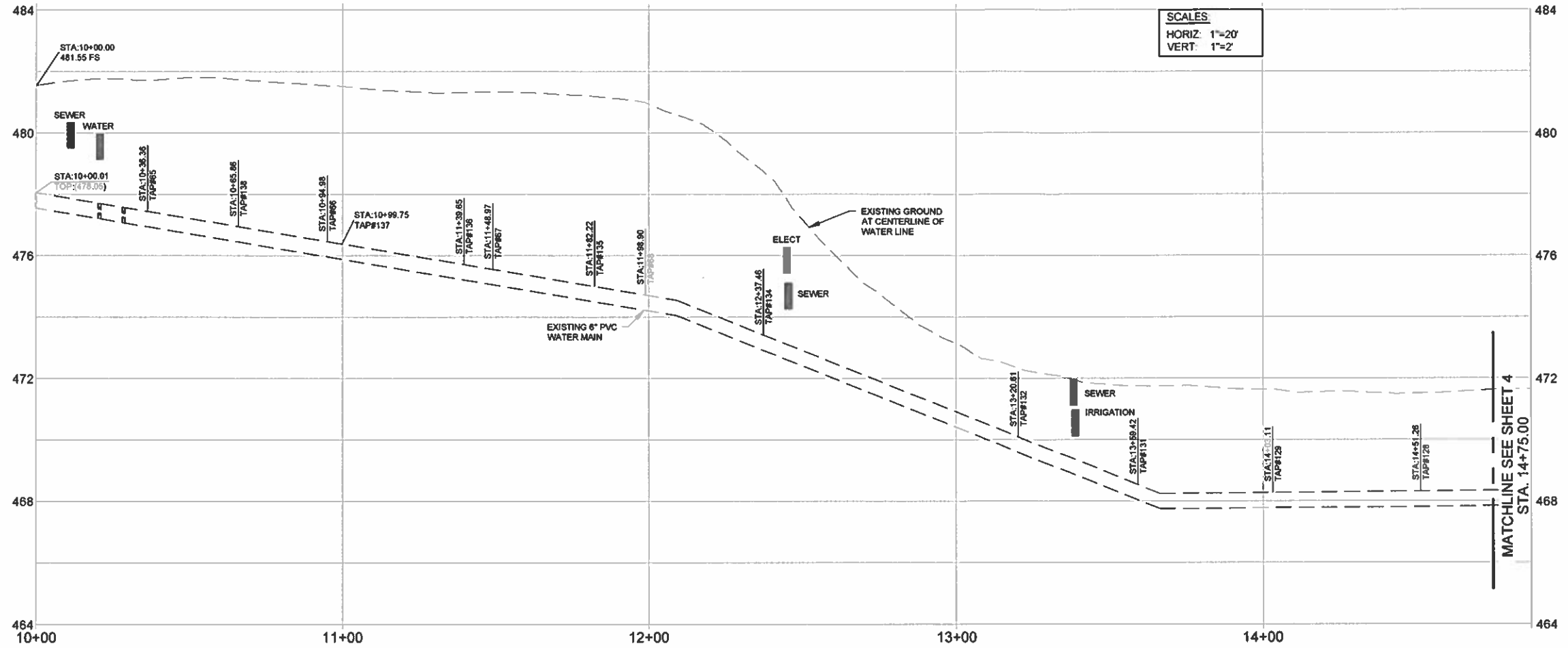
CHEMEHUEVI INDIAN TRIBE
 P.O. BOX 1976
 HAVASU LANDING, CA. 92363
 (760) 858-1116

SHEET INDEX			
SCALE: NONE	DESIGNER: DJL	APPROVED BY: TRB	DRAWN BY: JRS
DATE: 05/21/20	SURVEY: N/A	DWG: 1219 WATER INDDWG	
HAVASU LANDING, CHEMEHUEVI VALLEY, CA.			PAGE: 2 OF 13

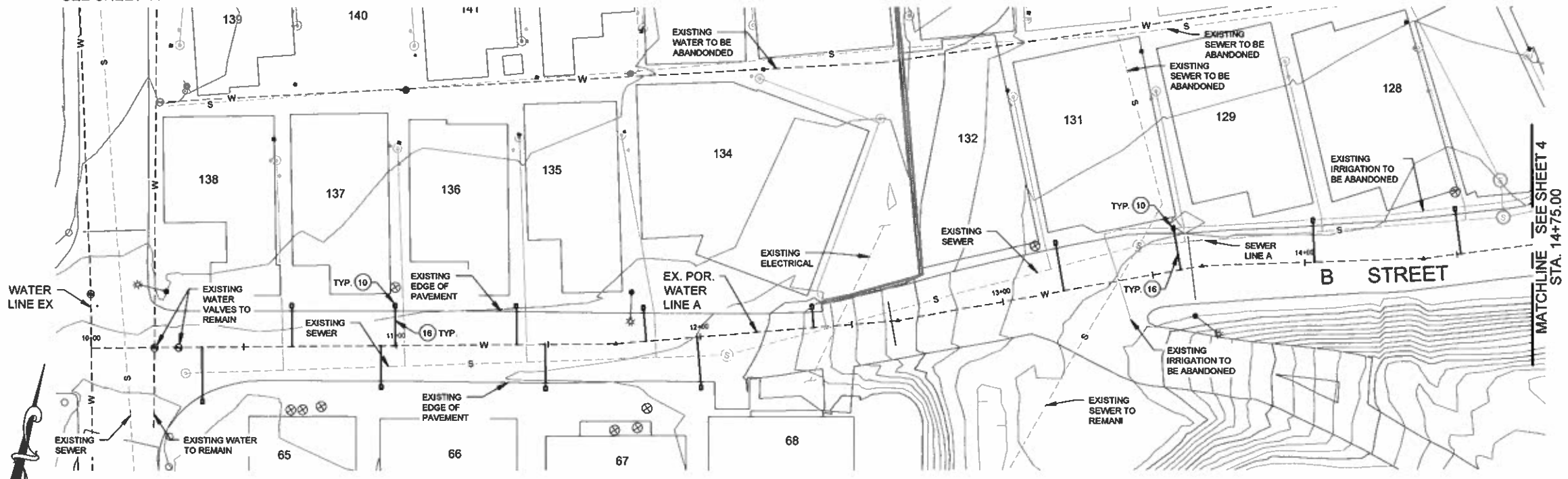
CONSTRUCTION NOTES:

- (10) DOMESTIC SERVICE CONNECTION 1" SADDLE TAP AND 1" CORP STOP AT MAIN. INSTALL METER BOX AND METER SETTER, OLDCASTLE DURALITE MODEL 1118-18 WITH TIER 22 POLYMER CONCRETE LID AND FORD 70 SERIES COPPERSETTER FOR 3/4" X 3/4" METER. SEE DETAIL ON SHEET 13.
- (16) 1" HDPE FOR SERVICE CONNECTION.

SCALES
 HORIZ: 1"=20'
 VERT: 1"=2'




SEE SHEET 11



LEGEND:

- (Symbol) SYMBOL IN PROFILE DENOTES POSSIBLE LOCATION OF EXISTING CONDUIT OR PIPE CROSSING
- (Symbol) SYMBOL IN PROFILE DENOTES LOCATION OF PROPOSED CONDUIT OR PIPE CROSSING
- (Symbol) TRACER WIRE ACCESS POINT LOCATION

REVISIONS			
REV	DATE	DESCRIPTION	BY

PREPARED BY:

DOUBLE R
 ENGINEERING SERVICES, INC.
 60 ACOMA BOULEVARD S., SUITE 8-104
 LAKE HAVASU CITY, ARIZONA 86403
 (928) 854-8800

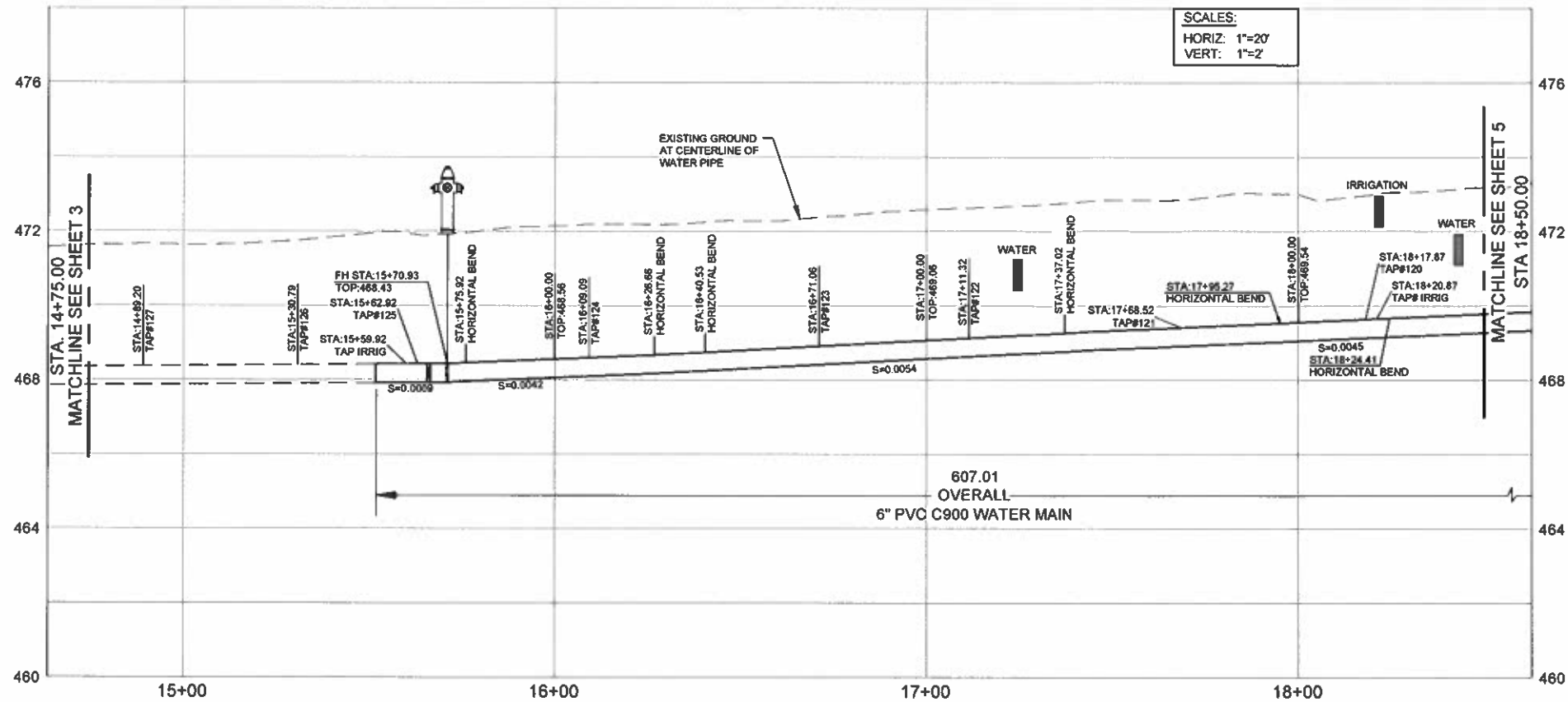


PREPARED FOR:
CHEMEHUEVI INDIAN TRIBE
 P.O. BOX 1976
 HAVASU LANDING, CA. 92363
 (760) 858-1116



WATER LINE A
 STA. 10+00.00 TO 14+75.00

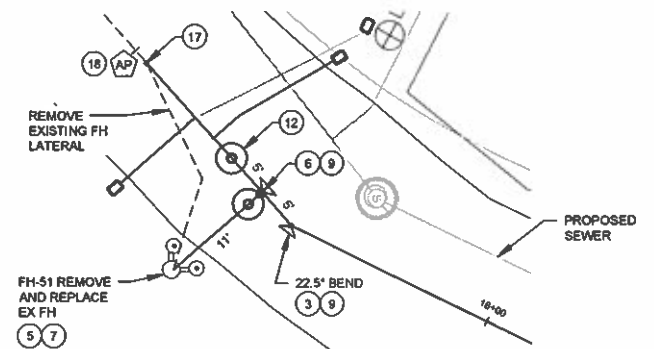
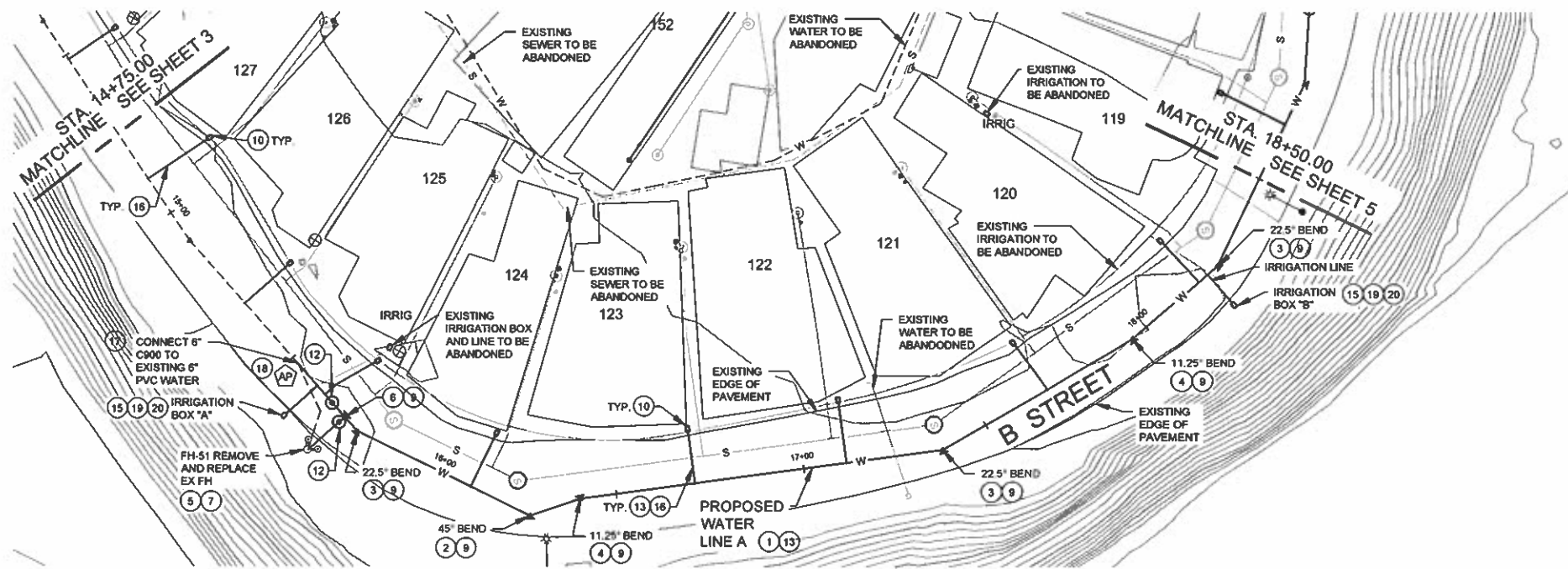
SCALE: 1"=20'	DESIGNER: DJL	APPROVED BY: TRB	DRAWN BY: JRS
DATE: 05/21/20	SURVEY: N/A	DWG: 1219 - WATER LINE A.DWG	
HAVASU LANDING, CHEMEHUEVI VALLEY, CA.			PAGE: 3 OF 13



SCALES:
HORIZ: 1"=20'
VERT: 1"=2'

CONSTRUCTION NOTES:

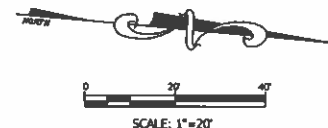
- ① 6" C900, PRESSURE CLASS 200, PVC WATER LINE. TRENCH AND BEDDING PER TECHNICAL SPECIFICATIONS SECTION 04601.
- ② 6" MJ X MJ-45 DEGREE BEND
- ③ 6" MJ X MJ-22.5 DEGREE BEND
- ④ 6" MJ X MJ-11.25 DEGREE BEND
- ⑤ REMOVE AND SALVAGE EXISTING FIRE HYDRANT. REMOVE EXISTING HYDRANT LATERAL.
- ⑥ 6"x8"x6" DI MJ TEE
- ⑦ FIRE HYDRANT INSTALLATION PER MAG STD. 360.1. WATEROUS MODEL WB67-250.
- ⑧ THRUST BLOCK PER MAG STD. 380.
- ⑩ DOMESTIC SERVICE CONNECTION. 1" SADDLE TAP AND 1" CORP STOP AT MAIN. INSTALL METER BOX AND METER SETTER, OLDCASTLE DURALITE MODEL 1118-18 WITH TIER 22 POLYMER CONCRETE LID AND FORD 70 SERIES COPPERSETTER FOR 5/8" X 3/4" METER. SEE DETAIL ON SHEET 13.
- ⑫ 6" RESILIENT SEAT GATE VALVE WITH VALVE BOX TYPE 'A' PER MAG STANDARD 391-1 AND DEBRIS CAP TYPE 'A' PER MAG STANDARD 392.
- ⑬ TRACER WIRE AND UNDERGROUND LOCATE TAPE. WIRE TO BE AWG 12, AFFIXED TO TOP OF PIPE WITH CINCH TIE OR PIPE WRAP TAPE. FASTEN AT INTERVALS SUFFICIENT TO PREVENT WIRE FROM DRAPING OVER SIDE OF PIPE. EXTEND THE WIRE INTO METER BOXES AND PROVIDE EXCESS FOR CONNECTION OF LOCATE EQUIPMENT. LOCATE TAPE TO BE PLACED ON TOP OF INITIAL TRENCH BACKFILL, 12" ABOVE TOP OF PIPE.
- ⑮ 2" SADDLE TAP, 2" HDPE LATERAL AND 2" ANGLE STOP FOR IRRIGATION METER INSTALLATION. INSTALL METER BOX, OLDCASTLE DURALITE MODEL 2436 WITH COMPOSITE LID.
- ⑯ 1" HDPE FOR SERVICE CONNECTION.
- ⑰ 6" COUPLING, ROMAC INDUSTRIES, MACRO EXTENDED RANGE COUPLING OR SIMILAR.
- ⑱ COPPERHEAD WIRE SNAKE PIT ROADWAY ACCESS POINT WITH GREEN-SINGLE TERMINAL LID. SEE SHEET 2 FOR LOCATIONS.
- ⑲ 1-1/2" WILKINS PRESSURE REDUCING BACKFLOW PREVENTER MODEL 975XLSE. SEE DETAIL ON SHEET 13.
- ⑳ ENCLOSURE FOR BACKFLOW PREVENTER, GUARDSHACK MODEL GS-3, OR SIMILAR. SEE DETAIL ON SHEET 13.



DETAIL OF FH-51
SCALE: 1"=10'

LEGEND:

- SYMBOL IN PROFILE DENOTES POSSIBLE LOCATION OF EXISTING CONDUIT OR PIPE CROSSING
- SYMBOL IN PROFILE DENOTES LOCATION OF PROPOSED CONDUIT OR PIPE CROSSING
- AP TRACER WIRE ACCESS POINT LOCATION



REVISIONS			
REV	DATE	DESCRIPTION	BY

PREPARED BY:



DOUBLE R
ENGINEERING SERVICES, INC.
60 ACOMA BOULEVARD S., SUITE B-104
LAKE HAVASU CITY, ARIZONA 86403
(928) 854-8800



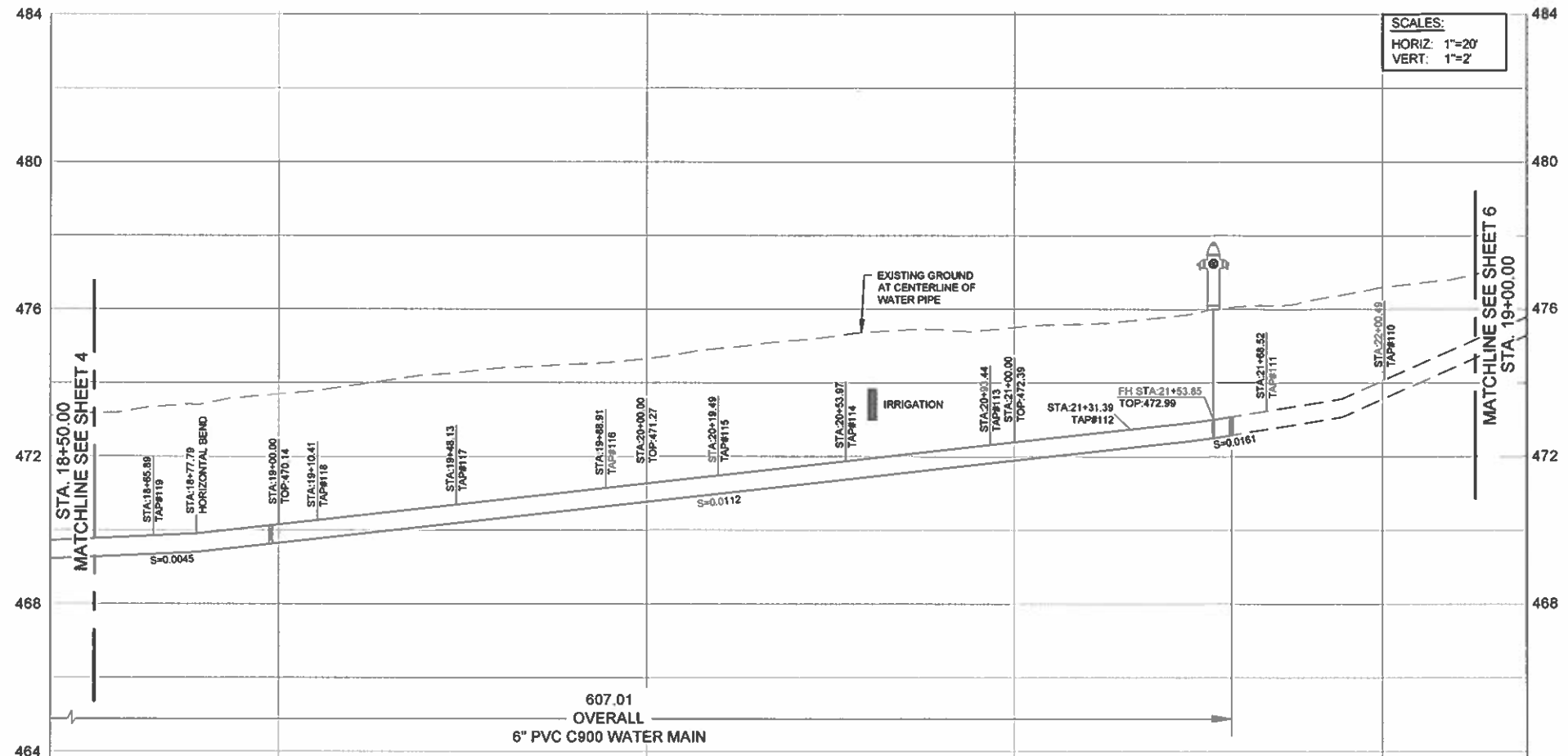
PREPARED FOR:

CHEMEHUEVI INDIAN TRIBE
P.O. BOX 1976
HAVASU LANDING, CA. 92363
(760) 858-1116



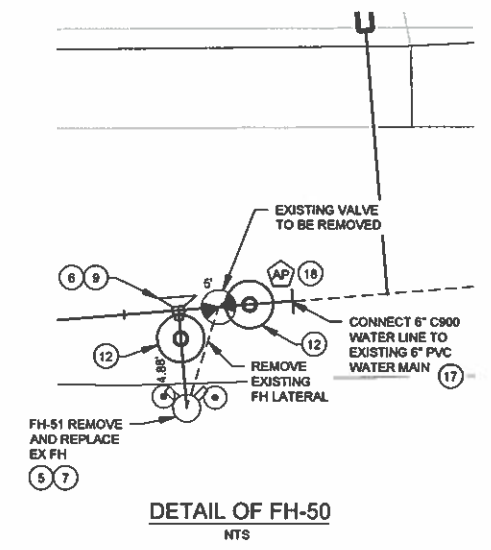
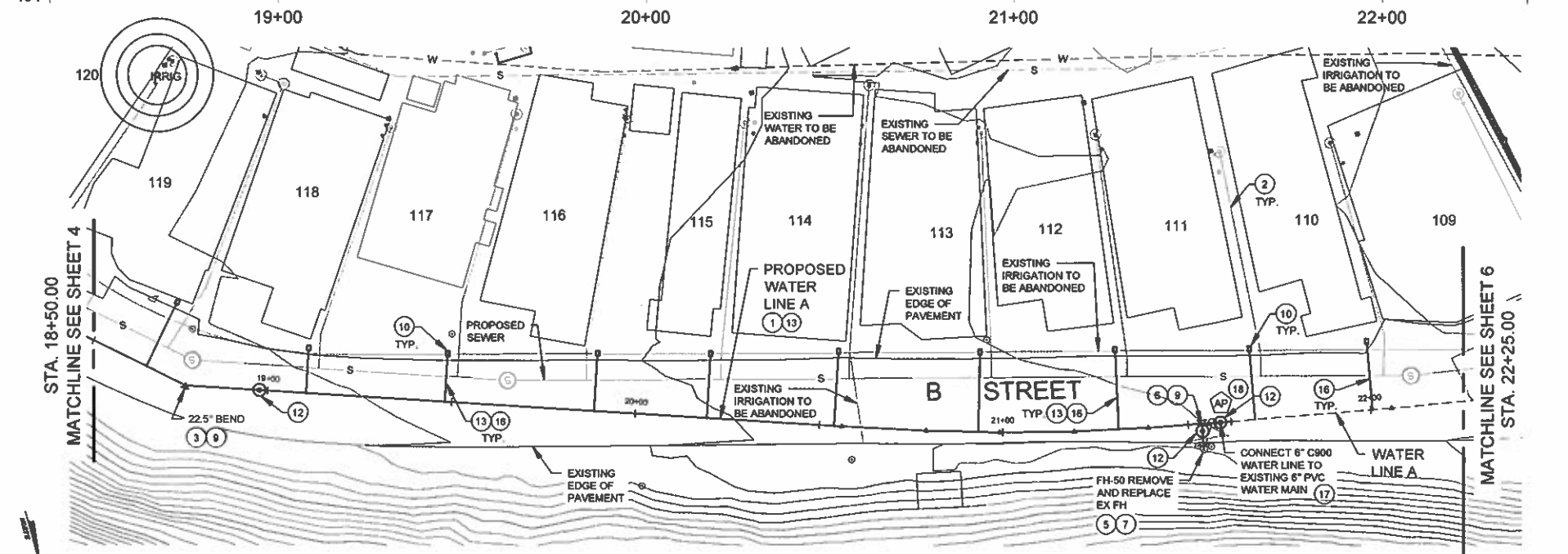
WATER LINE A
STA. 14+75.00 TO 18+50.00

SCALE: 1"=20'	DESIGNER: DJL	APPROVED BY: TRB	DRAWN BY: JRS
DATE: 05/21/20	SURVEY: N/A	DWG: 1219 - WATER LINE A.DWG	
HAVASU LANDING, CHEMEHUEVI VALLEY, CA.			PAGE: 4 OF 13



SCALES:
HORIZ: 1"=20'
VERT: 1"=2'

- CONSTRUCTION NOTES:**
- ① 6" C900, PRESSURE CLASS 200, PVC WATER LINE. TRENCH AND BEDDING PER TECHNICAL SPECIFICATIONS SECTION 04601.
 - ③ 6" MJ X MJ-22.5 DEGREE BEND
 - ⑤ REMOVE AND SALVAGE EXISTING FIRE HYDRANT. REMOVE EXISTING HYDRANT LATERAL.
 - ⑧ 6"X6"X6" DI MJ TEE
 - ⑦ FIRE HYDRANT INSTALLATION PER MAG STD. 360-1. WATEROUS MODEL W667-250.
 - ⑨ THRUST BLOCK PER MAG STD. 380.
 - ⑩ DOMESTIC SERVICE CONNECTION. 1" SADDLE TAP AND 1" CORP STOP AT MAIN. INSTALL METER BOX AND METER SETTER, OLDCASTLE DURALITE MODEL 1118-18 WITH TIER 22 POLYMER CONCRETE LID AND, FORD 70 SERIES COPPERSETTER FOR 5/8" X 3/4" METER. SEE DETAIL ON SHEET 13.
 - ⑫ 6" RESILIENT SEAT GATE VALVE WITH VALVE BOX TYPE "A" PER MAG STANDARD 391-1 AND, DEBRIS CAP TYPE "A" PER MAG STANDARD 392.
 - ⑬ TRACER WIRE AND UNDERGROUND LOCATE TAPE. WIRE TO BE AWG 12. AFFIXED TO TOP OF PIPE WITH CINCH TIE OR PIPE WRAP TAPE. FASTEN AT INTERVALS SUFFICIENT TO PREVENT WIRE FROM DRAPING OVER SIDE OF PIPE. EXTEND THE WIRE INTO METER BOXES AND PROVIDE EXCESS FOR CONNECTION OF LOCATE EQUIPMENT. LOCATE TAPE TO BE PLACED ON TOP OF INITIAL TRENCH BACKFILL, 12" ABOVE TOP OF PIPE.
 - ⑮ 2" SADDLE TAP, 2" HDPE LATERAL AND 2" ANGLE STOP FOR IRRIGATION METER INSTALLATION. INSTALL METER BOX, OLDCASTLE DURALITE MODEL 2436 WITH COMPOSITE LID.
 - ⑯ 1" HDPE FOR SERVICE CONNECTION.
 - ⑰ 6" COUPLING, ROMAC INDUSTRIES, MACRO EXTENDED RANGE COUPLING OR SIMILAR.
 - ⑱ COPPERHEAD WIRE SNAKE PIT ROADWAY ACCESS POINT WITH GREEN-SINGLE TERMINAL LID. SEE SHEET 2 FOR LOCATIONS.

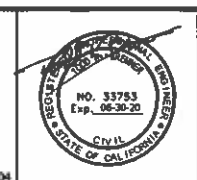


- LEGEND:**
- SYMBOL IN PROFILE DENOTES POSSIBLE LOCATION OF EXISTING CONDUIT OR PIPE CROSSING
 - SYMBOL IN PROFILE DENOTES LOCATION OF PROPOSED CONDUIT OR PIPE CROSSING
 - AP TRACER WIRE ACCESS POINT LOCATION

REVISIONS			
REV	DATE	DESCRIPTION	BY

PREPARED BY:

DOUBLE R
ENGINEERING SERVICES, INC.
60 ACOMA BOULEVARD S., SUITE B-104
LAKE HAVASU CITY, ARIZONA 86403
(928) 854-8800



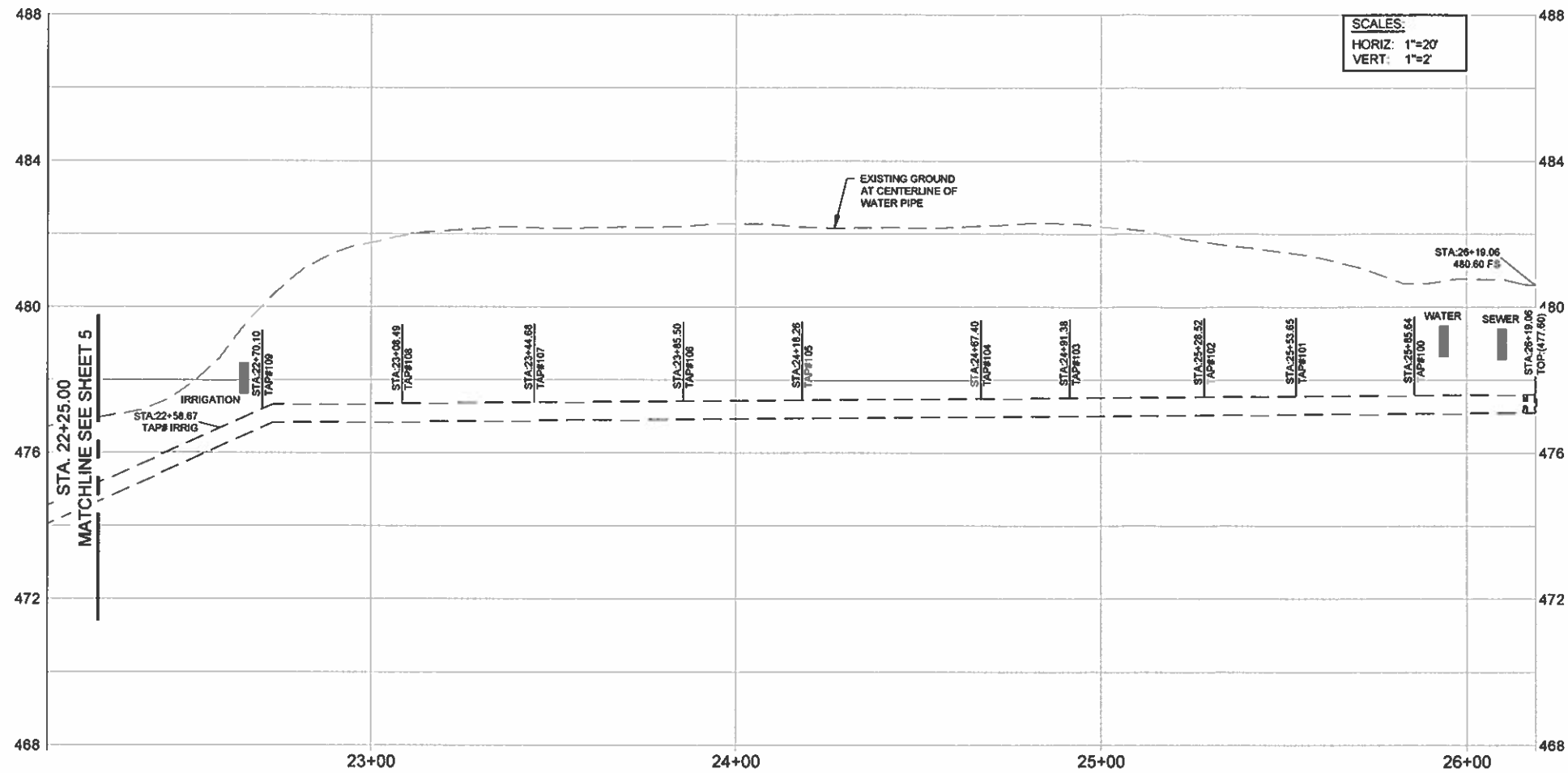
PREPARED FOR:

CHEMEHUEVI INDIAN TRIBE
P.O. BOX 1976
HAVASU LANDING, CA. 92363
(760) 858-1116

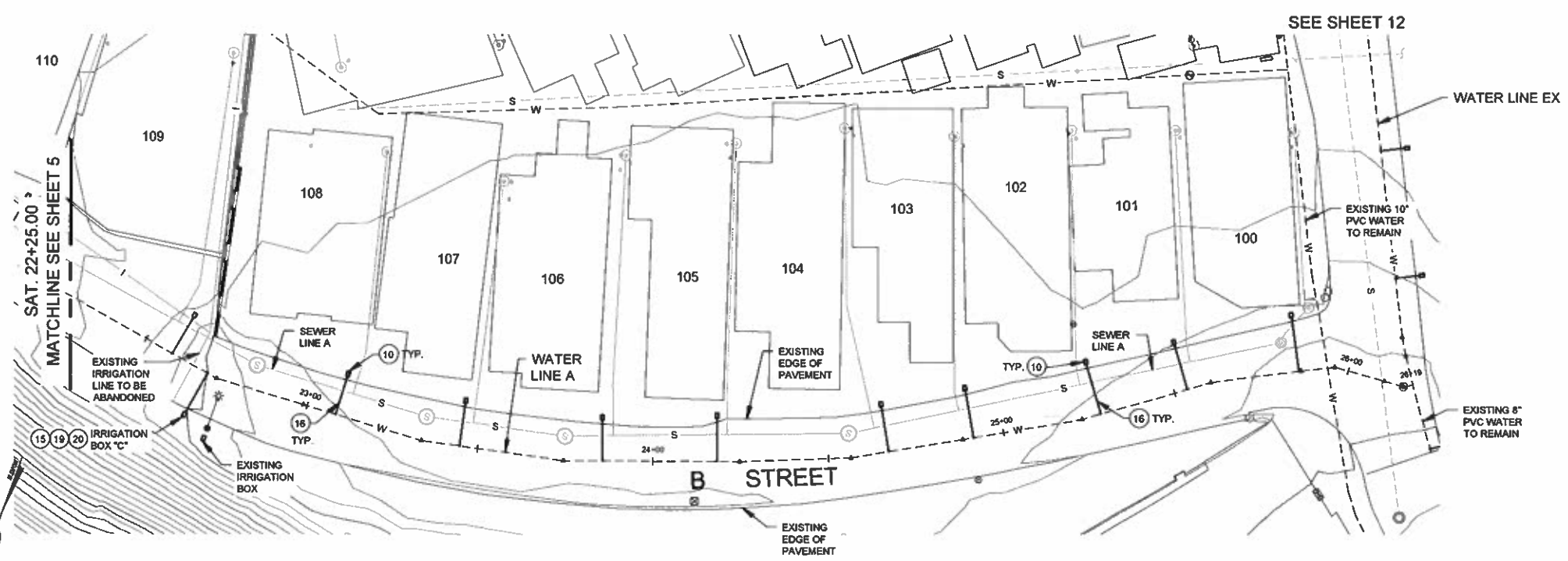


WATER LINE A
STA. 18+50.00 TO 22+25.00

SCALE: 1"=20'	DESIGNER: DJL	APPROVED BY: TRB	DRAWN BY: JRS
DATE: 05/21/20	SURVEY: N/A	DWG: 1219 - WATER LINE A.DWG	
HAVASU LANDING, CHEMEHUEVI VALLEY, CA.			PAGE: 5 OF 13



- CONSTRUCTION NOTES:**
- 10 DOMESTIC SERVICE CONNECTION. 1" SADDLE TAP AND 1" CORP STOP AT MAIN. INSTALL METER BOX AND METER SETTER, OLDCASTLE DURALITE MODEL 1118-18 WITH TIER 22 POLYMER CONCRETE LID AND FORD 70 SERIES COPPERSETTER FOR 5/8" X 3/4" METER. SEE DETAIL ON SHEET 13.
 - 15 2" SADDLE TAP, 2" HDPE LATERAL AND 2" ANGLE STOP FOR IRRIGATION METER INSTALLATION. INSTALL METER BOX, OLDCASTLE DURALITE MODEL 2436 WITH COMPOSITE LID.
 - 16 1" HDPE FOR SERVICE CONNECTION.
 - 19 1-1/2" WILKINS PRESSURE REDUCING BACKFLOW PREVENTER MODEL 975XLSE. SEE DETAIL ON SHEET 13.
 - 20 ENCLOSURE FOR BACKFLOW PREVENTER, GUARDSHACK MODEL GS-3, OR SIMILAR. SEE DETAIL ON SHEET 13.



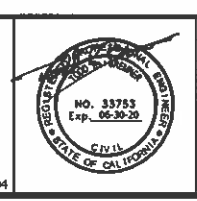
- LEGEND:**
- Symbol in profile denotes possible location of existing conduit or pipe crossing
 - Symbol in profile denotes location of proposed conduit or pipe crossing
 - Tracer wire access point location

REVISIONS			
REV	DATE	DESCRIPTION	BY

PREPARED BY:

DOUBLE R
 ENGINEERING SERVICES, INC.
 60 ACOMA BOULEVARD S., SUITE 8-104
 LAKE HAVASU CITY, ARIZONA 86403
 (928) 854-8800

© 2004



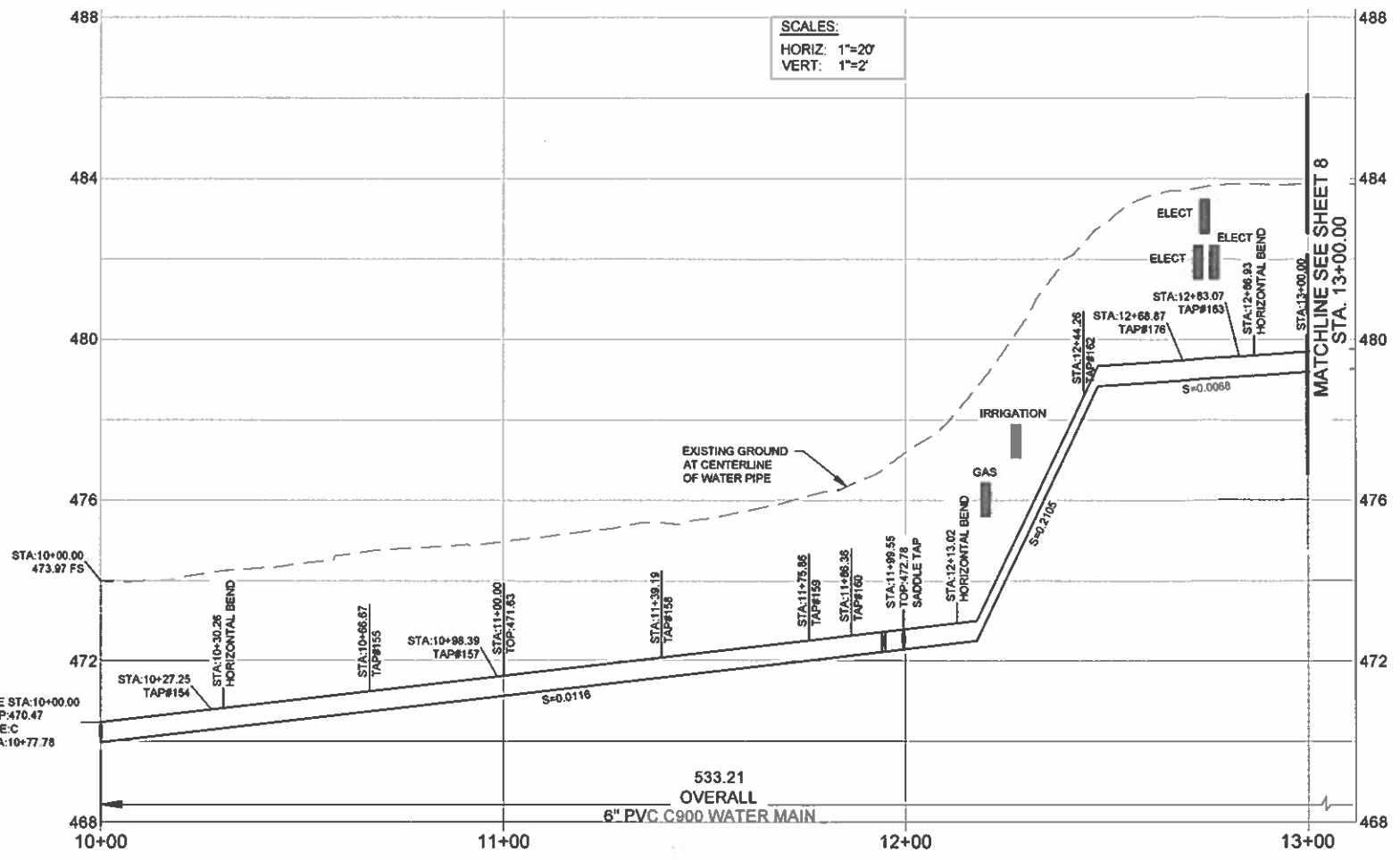
PREPARED FOR:

CHEMEHUEVI INDIAN TRIBE
 P.O. BOX 1976
 HAVASU LANDING, CA. 92363
 (760) 858-1116

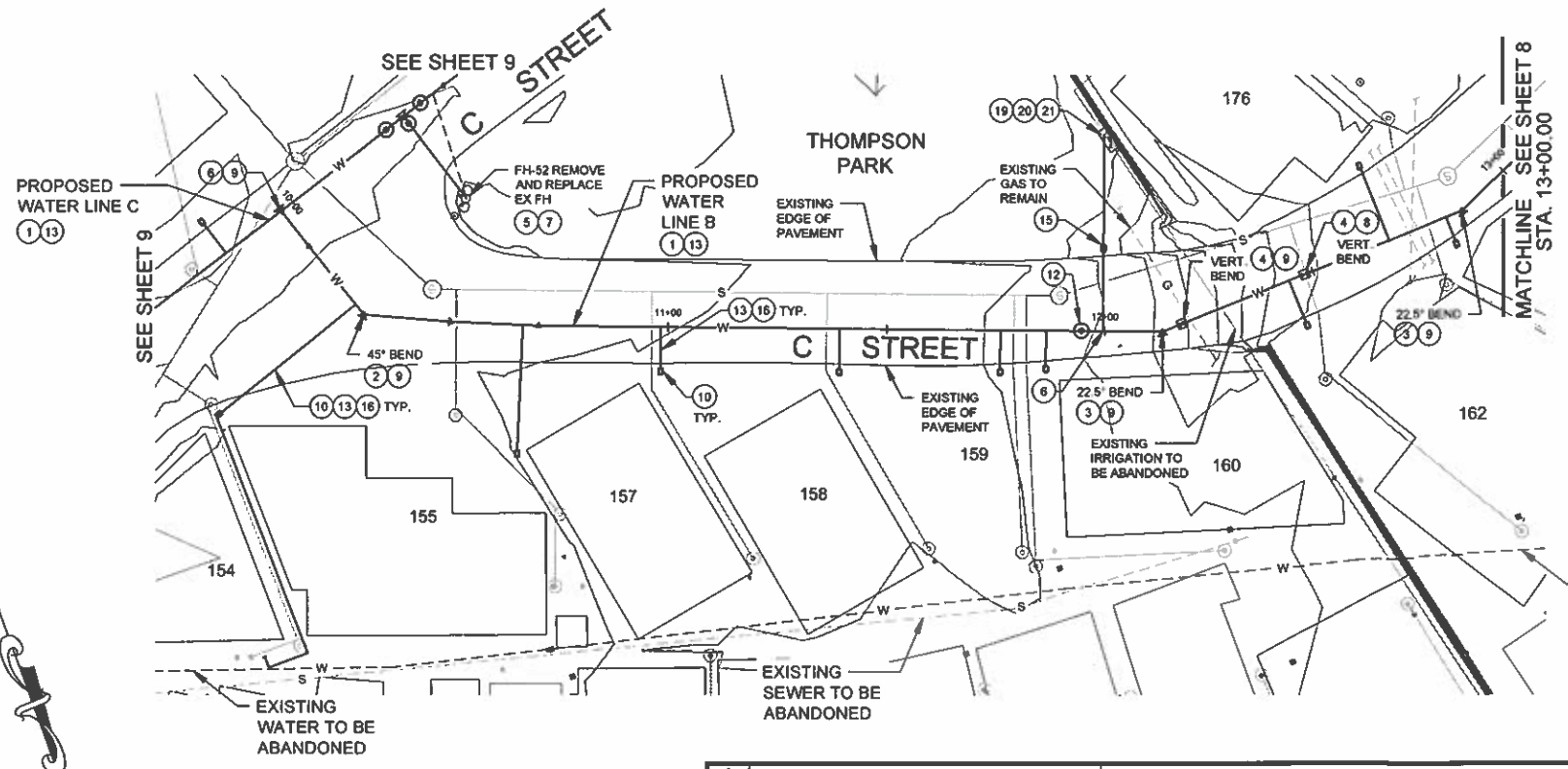
WATER LINE A
 STA. 22+25.00 TO 26+19.06

SCALE: 1"=20'	DESIGNER: DJL	APPROVED BY: TRB	DRAWN BY: JRS
DATE: 05/21/20	SURVEY: N/A	DWG: 1219 - WATER LINE A.DWG	

HAVASU LANDING, CHEMEHUEVI VALLEY, CA. PAGE: 6 OF 13



- CONSTRUCTION NOTES:**
- 1 6" C900, PRESSURE CLASS 200, PVC WATER LINE. TRENCH AND BEDDING PER TECHNICAL SPECIFICATIONS SECTION 04601.
 - 2 6" MJ X MJ- 45 DEGREE BEND
 - 3 6" MJ X MJ- 22.5 DEGREE BEND
 - 4 6" MJ X MJ- 11.25 DEGREE BEND
 - 5 REMOVE AND SALVAGE EXISTING FIRE HYDRANT. REMOVE EXISTING HYDRANT LATERAL.
 - 6 6"x6"x6" DI MJ TEE
 - 7 FIRE HYDRANT INSTALLATION PER MAG STD. 360-1, WATEROUS MODEL WB67-250.
 - 8 ANCHOR BLOCK FOR VERTICAL BENDS PER MAG STANDARD 381
 - 9 THRUST BLOCK PER MAG STD. 380.
 - 10 DOMESTIC SERVICE CONNECTION. 1" SADDLE TAP AND 1" CORP STOP AT MAIN. INSTALL METER BOX AND METER SETTER, OLDCASTLE DURALITE MODEL 1118-18 WITH TIER 22 POLYMER CONCRETE LID AND, FORD 70 SERIES COPPERSETTER FOR 5/8" X 3/4" METER. SEE DETAIL ON SHEET 13.
 - 12 6" RESILIENT SEAT GATE VALVE WITH VALVE BOX TYPE "A" PER MAG STANDARD 391-1 AND, DEBRIS CAP TYPE "A" PER MAG STANDARD 392.
 - 13 TRACER WIRE AND UNDERGROUND LOCATE TAPE. WIRE TO BE AWG 12, AFFIXED TO TOP OF PIPE WITH CINCH TIE OR PIPE WRAP TAPE. FASTEN AT INTERVALS SUFFICIENT TO PREVENT WIRE FROM DRAPING OVER SIDE OF PIPE. EXTEND THE WIRE INTO METER BOXES AND PROVIDE EXCESS FOR CONNECTION OF LOCATE EQUIPMENT. LOCATE TAPE TO BE PLACED ON TOP OF INITIAL TRENCH BACKFILL, 12" ABOVE TOP OF PIPE.
 - 15 2" SADDLE TAP, 2" HDPE LATERAL AND 2" ANGLE STOP FOR IRRIGATION METER INSTALLATION. INSTALL METER BOX, OLDCASTLE DURALITE MODEL 2436 WITH COMPOSITE LID.
 - 16 1" HDPE FOR SERVICE CONNECTION.
 - 19 1-1/2" WILKINS PRESSURE REDUCING BACKFLOW PREVENTER MODEL 975XLSE. SEE DETAIL ON SHEET 13.
 - 20 ENCLOSURE FOR BACKFLOW PREVENTER, GUARDSHACK MODEL GS-3, OR SIMILAR. SEE DETAIL ON SHEET 13.
 - 21 REMOVE AND SALVAGE EXISTING BACKFLOW PREVENTER.

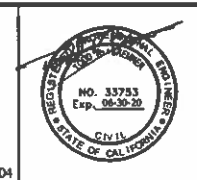


- LEGEND:**
- SYMBOL IN PROFILE DENOTES POSSIBLE LOCATION OF EXISTING CONDUIT OR PIPE CROSSING
 - SYMBOL IN PROFILE DENOTES LOCATION OF PROPOSED CONDUIT OR PIPE CROSSING
 - TRACER WIRE ACCESS POINT LOCATION

REVISIONS			
REV	DATE	DESCRIPTION	BY

PREPARED BY:

DOUBLE R
ENGINEERING SERVICES, INC.
60 ACOMA BOULEVARD S., SUITE B-104
LAKE HAVASU CITY, ARIZONA 86403
(928) 854-8800



PREPARED FOR:

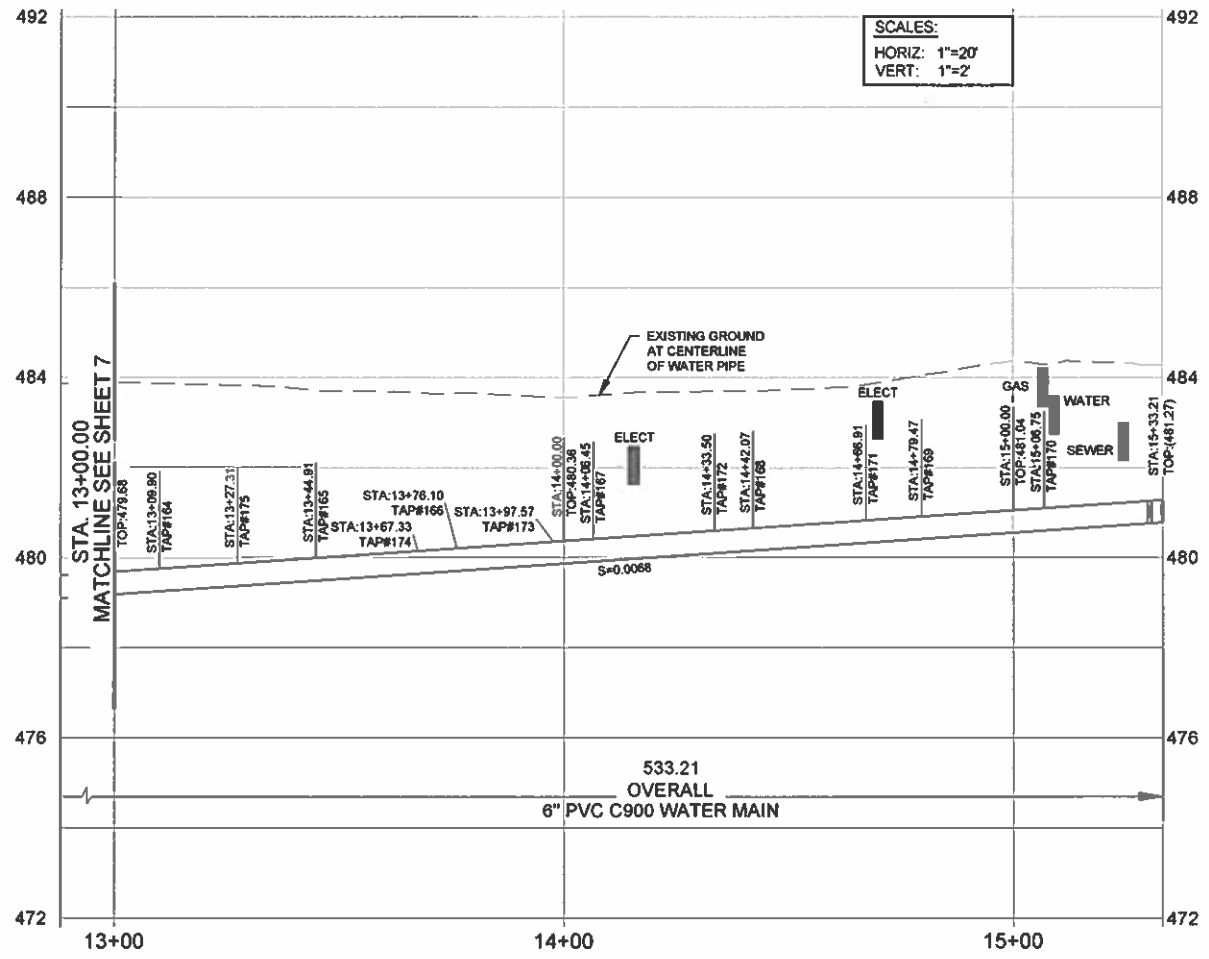
CHEMEHUEVI INDIAN TRIBE
P.O. BOX 1976
HAVASU LANDING, CA. 92363
(760) 858-1116



WATER LINE B
STA. 10+00.00 TO 13+00.00

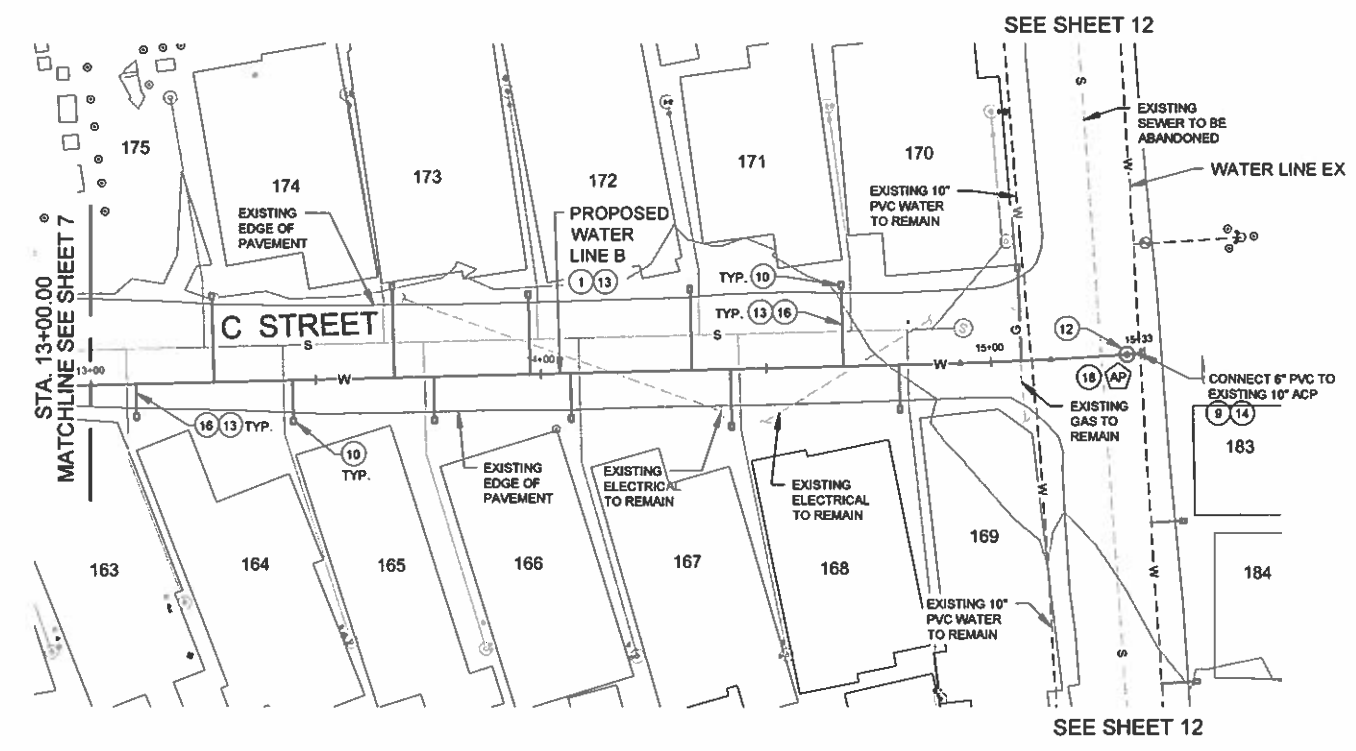
SCALE: 1"=20'	DESIGNER: DJL	APPROVED BY: TRB	DRAWN BY: JRS
DATE: 05/21/20	SURVEY: N/A	DWG: 1219 - WATER LINE B.DWG	

HAVASU LANDING, CHEMEHUEVI VALLEY, CA. PAGE: 7 OF 13



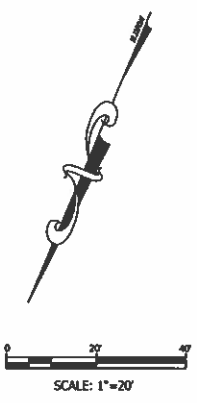
CONSTRUCTION NOTES:

- 1 6" C900, PRESSURE CLASS 200, PVC WATER LINE. TRENCH AND BEDDING PER TECHNICAL SPECIFICATIONS SECTION 04601.
- 9 THRUST BLOCK PER MAG STD. 380.
- 10 DOMESTIC SERVICE CONNECTION. 1" SADDLE TAP AND 1" CORP STOP AT MAIN. INSTALL METER BOX AND METER SETTER, OLDCASTLE DURALITE MODEL 1118-18 WITH TIER 22 POLYMER CONCRETE LID AND, FORD 70 SERIES COPPERSETTER FOR 3/4" X 3/4" METER. SEE DETAIL ON SHEET 13.
- 12 6" RESILIENT SEAT GATE VALVE WITH VALVE BOX TYPE 'A' PER MAG STANDARD 391-1 AND, DEBRIS CAP TYPE 'A' PER MAG STANDARD 392.
- 13 TRACER WIRE AND UNDERGROUND LOCATE TAPE. WIRE TO BE AWG 12, AFFIXED TO TOP OF PIPE WITH CINCH TIE OR PIPE WRAP TAPE. FASTEN AT INTERVALS SUFFICIENT TO PREVENT WIRE FROM DRAPING OVER SIDE OF PIPE. EXTEND THE WIRE INTO METER BOXES AND PROVIDE EXCESS FOR CONNECTION OF LOCATE EQUIPMENT. LOCATE TAPE TO BE PLACED ON TOP OF INITIAL TRENCH BACKFILL, 12" ABOVE TOP OF PIPE.
- 14 6" X 6" TAPPING SLEEVE FOR ACP PER MAG STANDARD 340.
- 15 1" HDPE FOR SERVICE CONNECTION.
- 16 COPPERHEAD WIRE SNAKE PIT ROADWAY ACCESS POINT WITH GREEN-SINGLE TERMINAL LID. SEE SHEET 2 FOR LOCATIONS.



LEGEND:

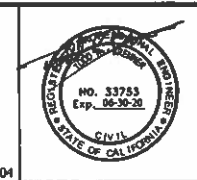
- SYMBOL IN PROFILE DENOTES POSSIBLE LOCATION OF EXISTING CONDUIT OR PIPE CROSSING
- SYMBOL IN PROFILE DENOTES LOCATION OF PROPOSED CONDUIT OR PIPE CROSSING
- TRACER WIRE ACCESS POINT LOCATION



REVISIONS			
REV	DATE	DESCRIPTION	BY

PREPARED BY:

DOUBLE R
ENGINEERING SERVICES, INC.
60 ACOMA BOULEVARD S., SUITE B-104
LAKE HAVASU CITY, ARIZONA 86403
(928) 854-8800



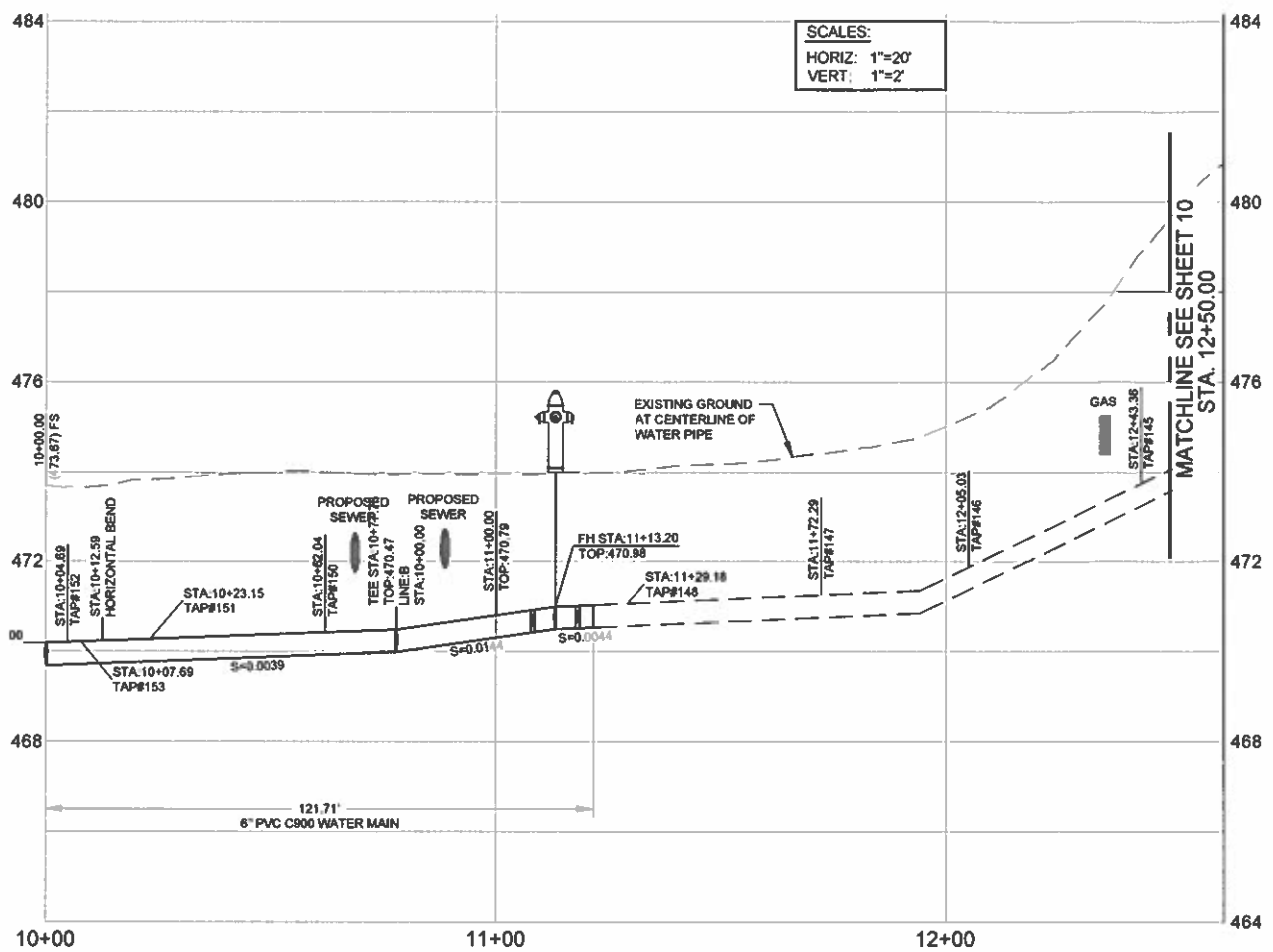
PREPARED FOR:

CHEMEHUEVI INDIAN TRIBE
P.O. BOX 1976
HAVASU LANDING, CA. 92363
(760) 858-1116

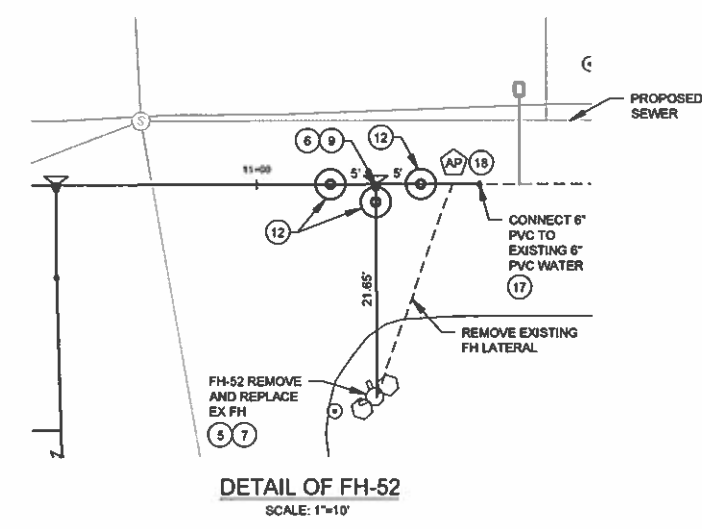
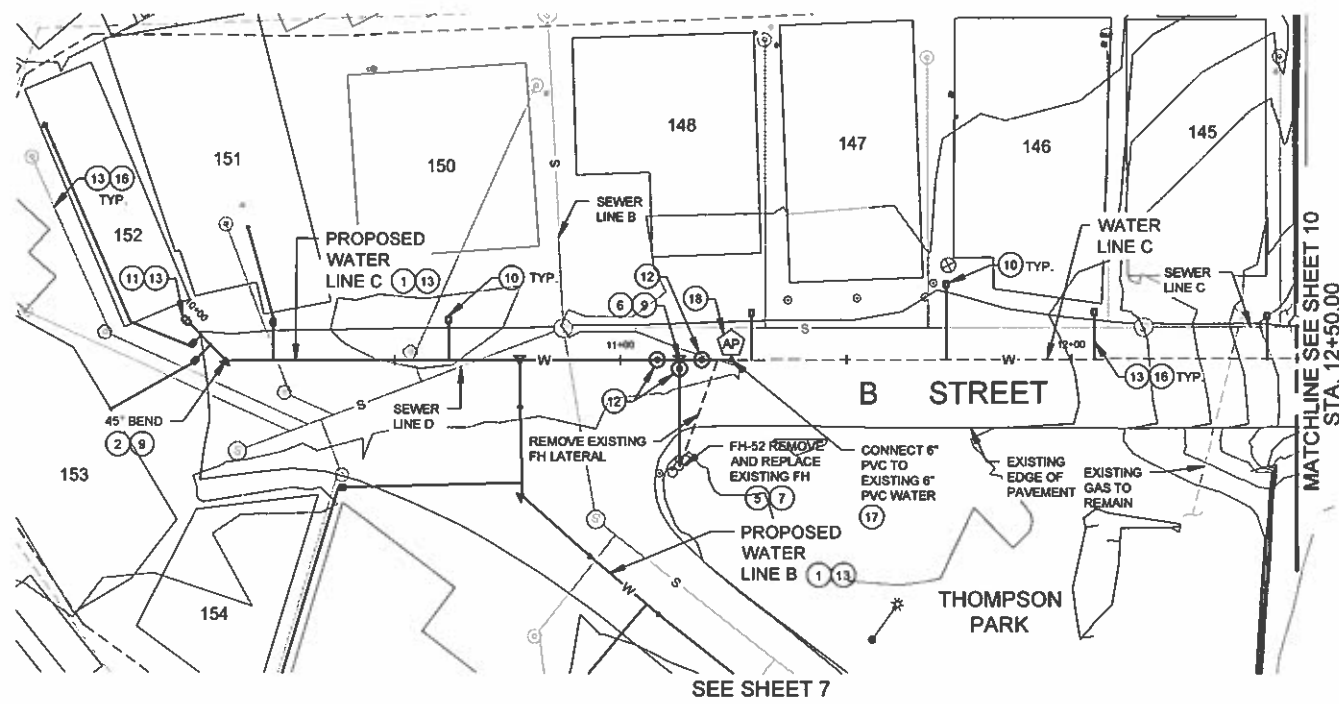


WATER LINE B
STA. 13+00.00 TO 15+33.21

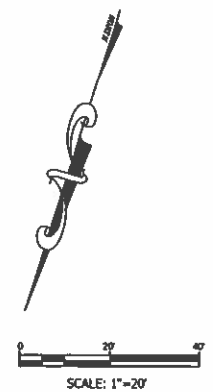
SCALE: 1"=20'	DESIGNER: DJL	APPROVED BY: TRB	DRAWN BY: JRS
DATE: 05/21/20	SURVEY: N/A	DWG: 1219 WATER LINE B.DWG	
HAVASU LANDING, CHEMEHUEVI VALLEY, CA.			PAGE: 8 OF 13



- CONSTRUCTION NOTES:**
- 1 6" C900, PRESSURE CLASS 200, PVC WATER LINE. TRENCH AND BEDDING PER TECHNICAL SPECIFICATIONS SECTION 04601.
 - 2 6" MJ X MJ- 45 DEGREE BEND
 - 5 REMOVE AND SALVAGE EXISTING FIRE HYDRANT. REMOVE EXISTING HYDRANT LATERAL.
 - 6 6"x6"x6" DI MJ TEE
 - 7 FIRE HYDRANT INSTALLATION PER MAG STD. 360-1. WATEROUS MODEL WB67-250.
 - 9 THRUST BLOCK PER MAG STD. 380.
 - 10 DOMESTIC SERVICE CONNECTION. 1" SADDLE TAP AND 1" CORP STOP AT MAIN. INSTALL METER BOX AND METER SETTER, OLDCASTLE DURALITE MODEL 1118-18 WITH TIER 22 POLYMER CONCRETE LID AND, FORD 70 SERIES COPPERSETTER FOR 5/8" X 3/4" METER. SEE DETAIL ON SHEET 13.
 - 11 2" CURB STOP WITH FLUSHING PIPE MAG STANDARD 390 TYPE 'B'
 - 12 6" RESILIENT SEAT GATE VALVE WITH VALVE BOX TYPE 'A' PER MAG STANDARD 391-1 AND, DEBRIS CAP TYPE 'A' PER MAG STANDARD 392.
 - 13 TRACER WIRE AND UNDERGROUND LOCATE TAPE. WIRE TO BE AWG 12, AFFIXED TO TOP OF PIPE WITH CINCH TIE OR PIPE WRAP TAPE. FASTEN AT INTERVALS SUFFICIENT TO PREVENT WIRE FROM DRAPING OVER SIDE OF PIPE. EXTEND THE WIRE INTO METER BOXES AND PROVIDE EXCESS FOR CONNECTION OF LOCATE EQUIPMENT. LOCATE TAPE TO BE PLACED ON TOP OF INITIAL TRENCH BACKFILL, 12" ABOVE TOP OF PIPE.
 - 16 1" HDPE FOR SERVICE CONNECTION.
 - 17 6" COUPLING, ROMAC INDUSTRIES, MACRO EXTENDED RANGE COUPLING OR SIMILAR.
 - 18 COPPERHEAD WIRE SNAKE PIT ROADWAY ACCESS POINT WITH GREEN-SINGLE TERMINAL LID, SEE SHEET 2 FOR LOCATIONS.



- LEGEND:**
- Symbol in profile denotes possible location of existing conduit or pipe crossing
 - Symbol in profile denotes location of proposed conduit or pipe crossing
 - AP Tracer wire access point location



REVISIONS			
REV	DATE	DESCRIPTION	BY

PREPARED BY:

DOUBLE R
ENGINEERING SERVICES, INC.
60 ACOMA BOULEVARD S., SUITE B-104
LAKE HAVASU CITY, ARIZONA 86403
(928) 854-8800

NO. 33753
Exp. 05-25-20
CIVIL
STATE OF CALIFORNIA

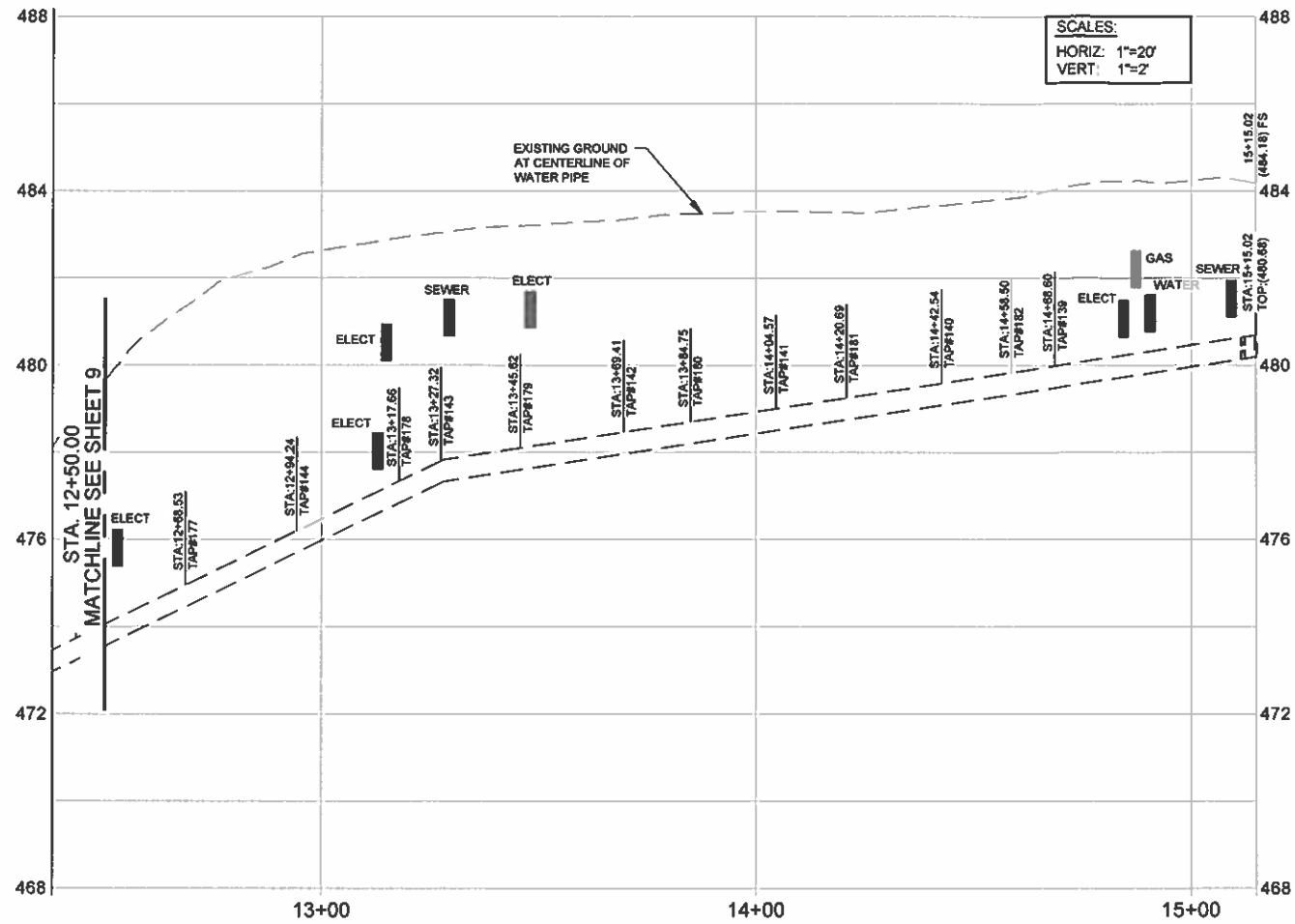
PREPARED FOR:

CHEMEHUEVI INDIAN TRIBE
P.O. BOX 1976
HAVASU LANDING, CA. 92363
(760) 858-1116

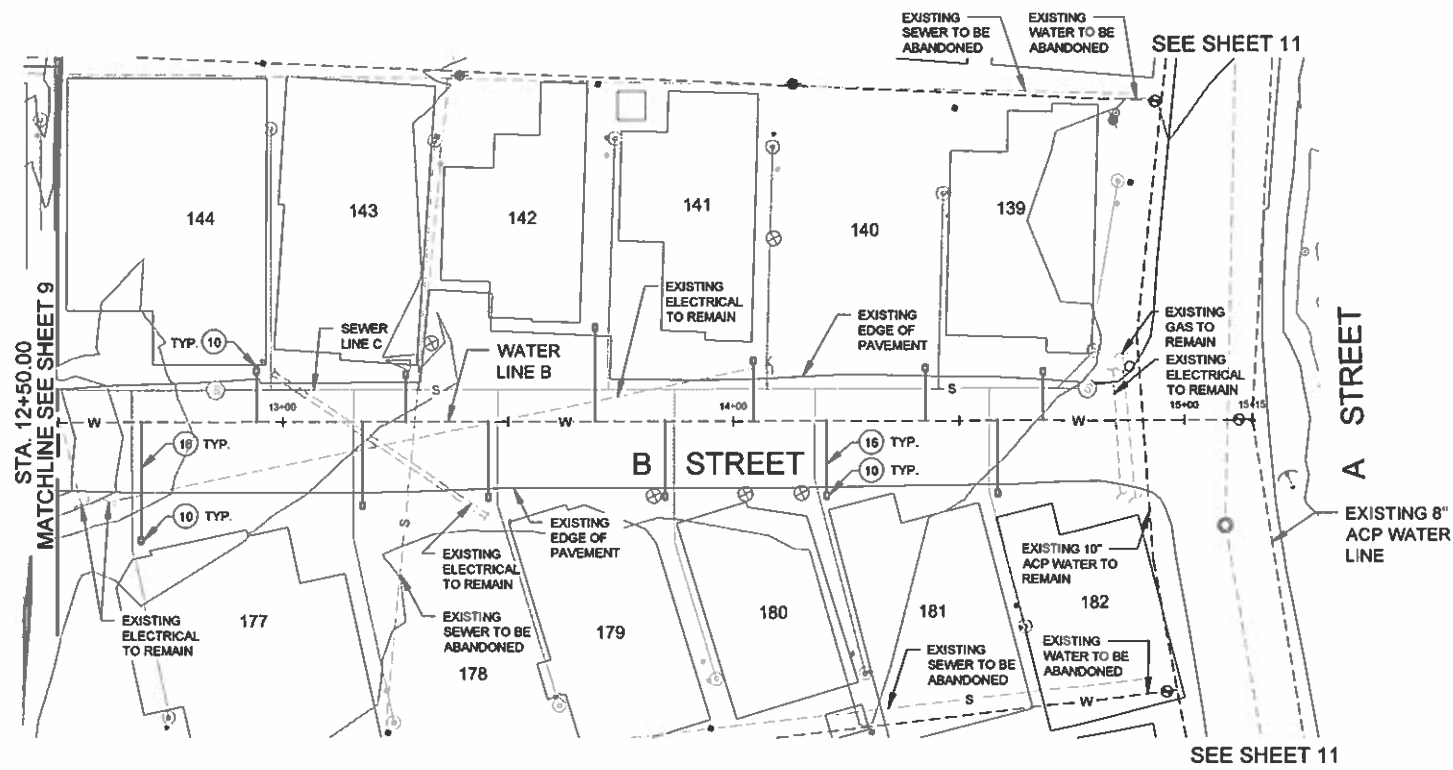
WATER LINE C
STA. 10+00.00 TO 12+50.00

SCALE: 1"=20'	DESIGNER: DJL	APPROVED BY: TRB	DRAWN BY: JRS
DATE: 05/21/20	SURVEY: N/A	DWG: 1211 - WATER LINE C.DWG	PAGE: 9 OF 13

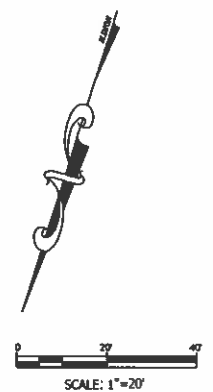
HAVASU LANDING, CHEMEHUEVI VALLEY, CA.



- CONSTRUCTION NOTES:**
- 10 DOMESTIC SERVICE CONNECTION. 1" SADDLE TAP AND 1" CORP STOP AT MAIN. INSTALL METER BOX AND METER SETTER, OLDCASTLE DURALITE MODEL 1118-18 WITH TIER 22 POLYMER CONCRETE LID AND, FORD 70 SERIES COPPERSETTER FOR 5/8" X 3/4" METER. SEE DETAIL ON SHEET 13.
 - 10 1" HDPE FOR SERVICE CONNECTION.



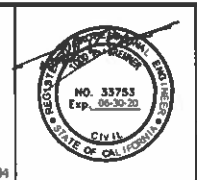
- LEGEND:**
- Symbol in profile denotes possible location of existing conduit or pipe crossing
 - Symbol in profile denotes location of proposed conduit or pipe crossing
 - AP Tracer wire access point location



REVISIONS			
REV	DATE	DESCRIPTION	BY

PREPARED BY:

DOUBLE R
 ENGINEERING SERVICES, INC.
 60 ACOMA BOULEVARD S., SUITE B-104
 LAKE HAVASU CITY, ARIZONA 86403
 (928) 854-8800



PREPARED FOR:

CHEMEHUEVI INDIAN TRIBE

P.O. BOX 1976
 HAVASU LANDING, CA. 92363
 (760) 858-1116

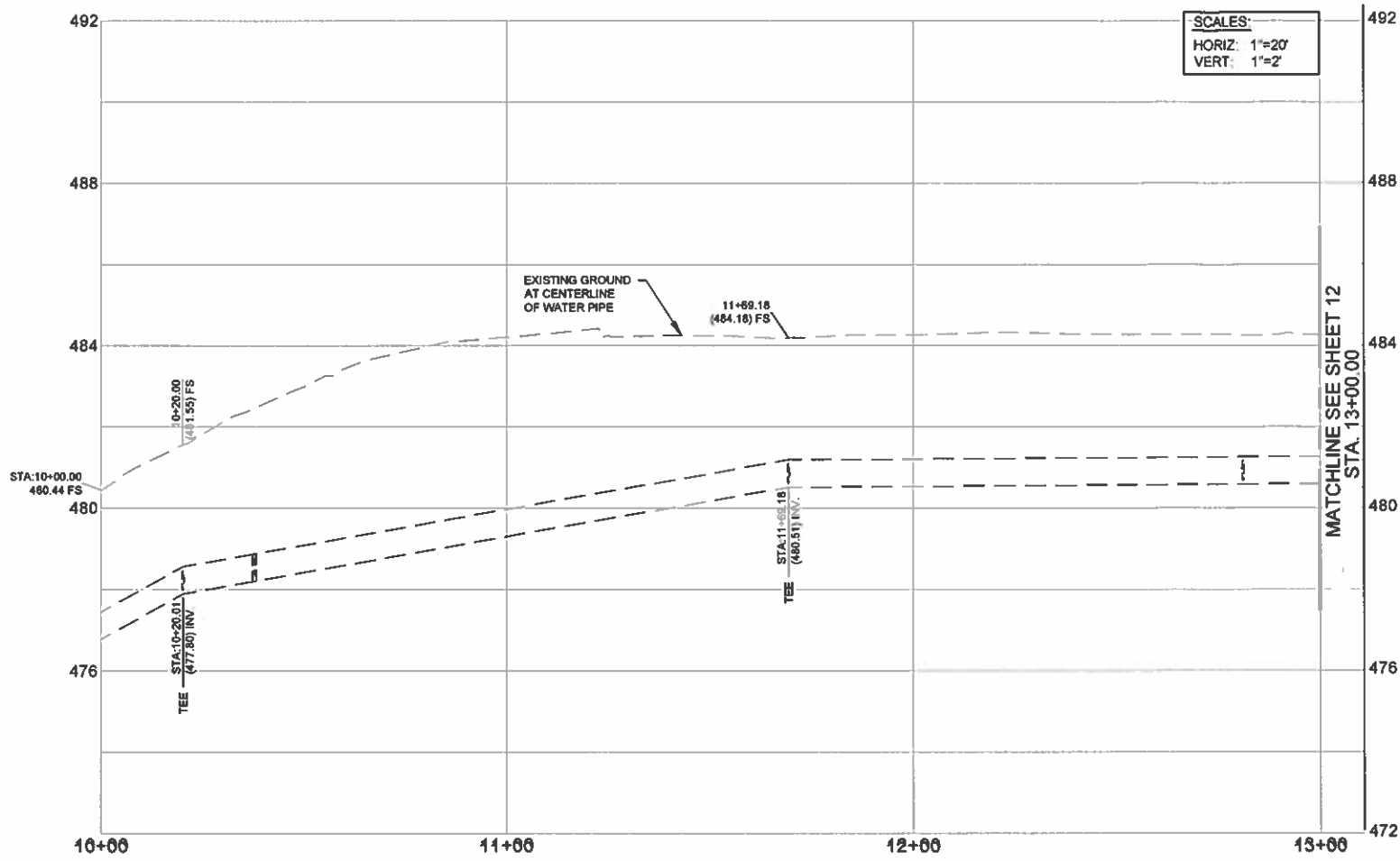
WATER LINE C
 STA. 12+50.00 TO 15+15.02

SCALE: 1"=20'	DESIGNER: DJL	APPROVED BY: TRB	DRAWN BY: JRS
DATE: 05/21/20	SURVEY: N/A	DWG: 1219 - WATER LINE C.DWG	PAGE: 10 OF 13

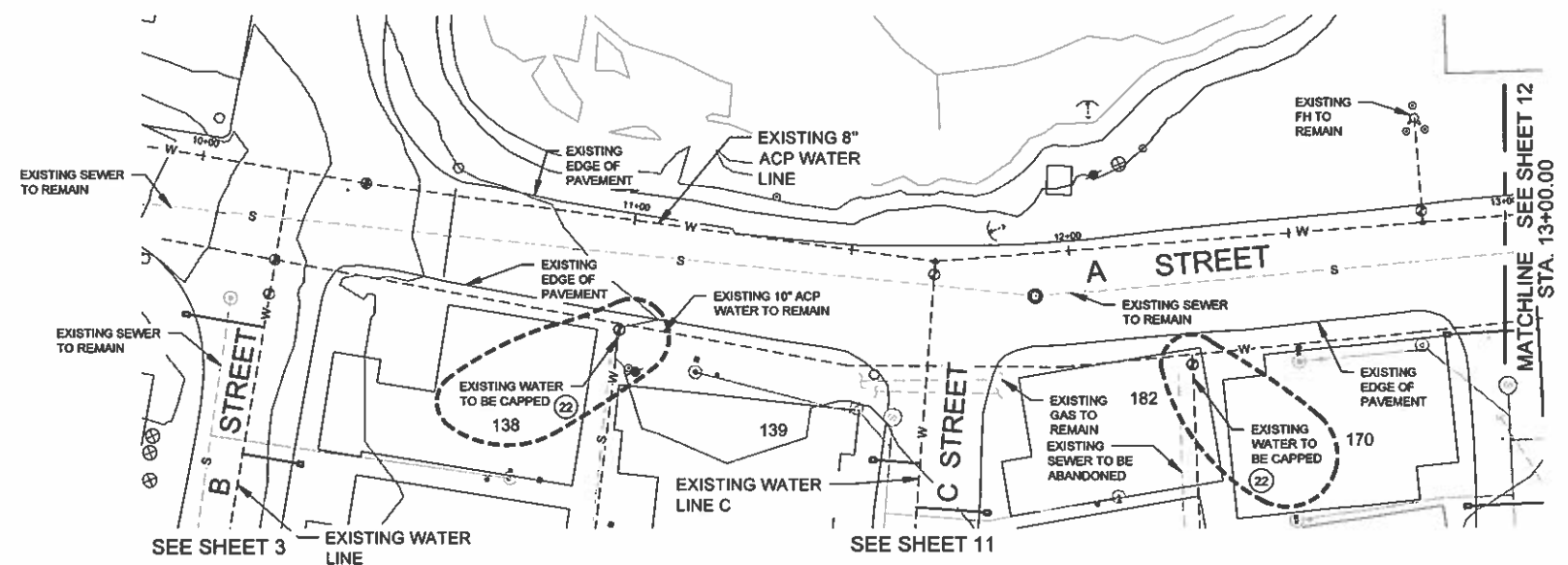
HAVASU LANDING, CHEMEHUEVI VALLEY, CA.

CONSTRUCTION NOTES:

- 22 INSERT LINE STOP OR FREEZE PLUG EXISTING SMALL DIAMETER WATER LINE AND INSTALL NEW, OPERATIONAL RESILIENT SEAT GATE VALVE. PROVIDE INTERIM RE-CONNECTION TO THE EXISTING WATER LINE TO ALLOW FOR SYSTEM SUPPLY DURING CONSTRUCTION. PERMANENTLY CAP THE SMALL DIAMETER LINE IMMEDIATELY AFTER THE NEWLY INSTALLED VALVE UPON COMPLETION OF CONSTRUCTION. ABANDON THE REMAINING LINE IN PLACE.

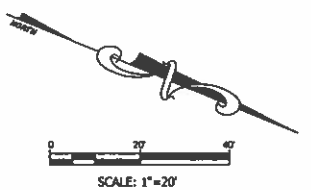


SCALES:
 HORIZ: 1"=20'
 VERT: 1"=2'



LEGEND:

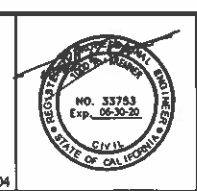
- SYMBOL IN PROFILE DENOTES POSSIBLE LOCATION OF EXISTING CONDUIT OR PIPE CROSSING
- SYMBOL IN PROFILE DENOTES LOCATION OF PROPOSED CONDUIT OR PIPE CROSSING
- TRACER WIRE ACCESS POINT LOCATION



REVISIONS			
REV	DATE	DESCRIPTION	BY

PREPARED BY:

DOUBLE R
 ENGINEERING SERVICES, INC.
 60 ACOMA BOULEVARD S., SUITE 8-104
 LAKE HAVASU CITY, ARIZONA 86403
 (928) 854-8800



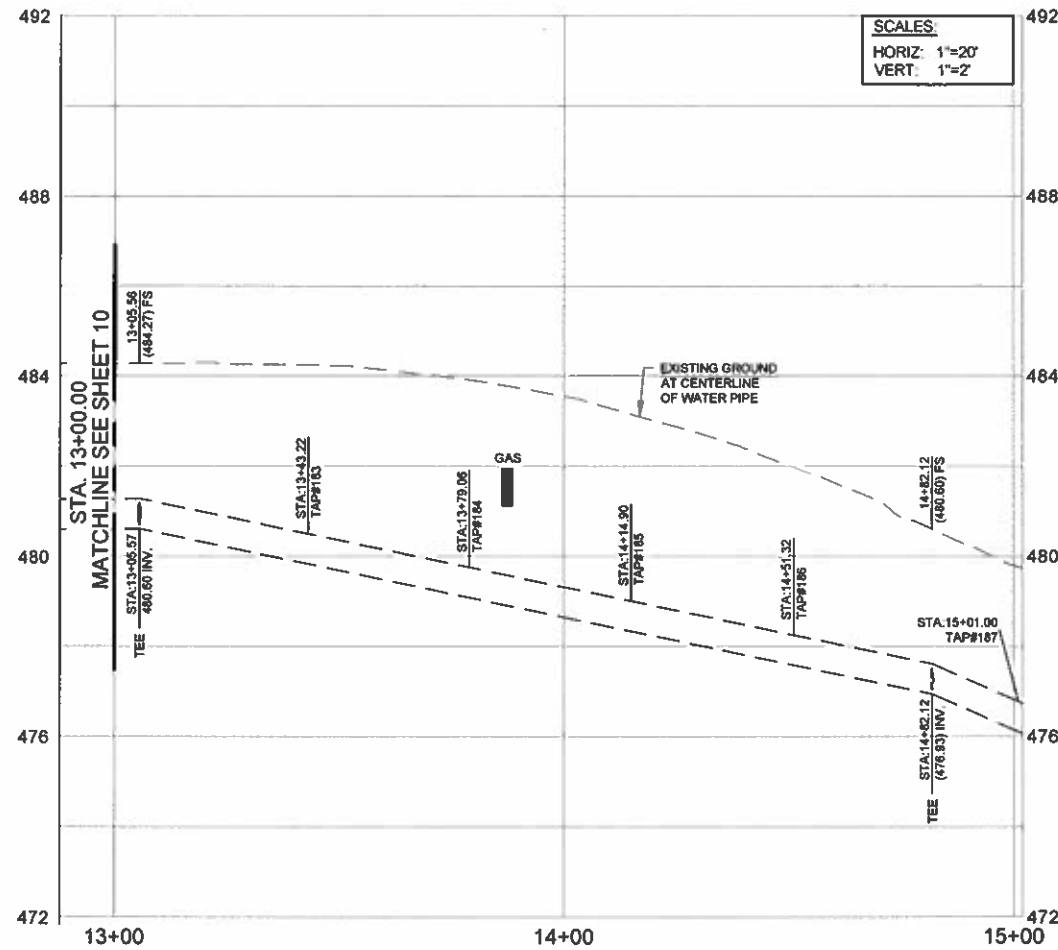
PREPARED FOR:
CHEMEHUEVI INDIAN TRIBE
 P.O. BOX 1976
 HAVASU LANDING, CA. 92363
 (760) 858-1116



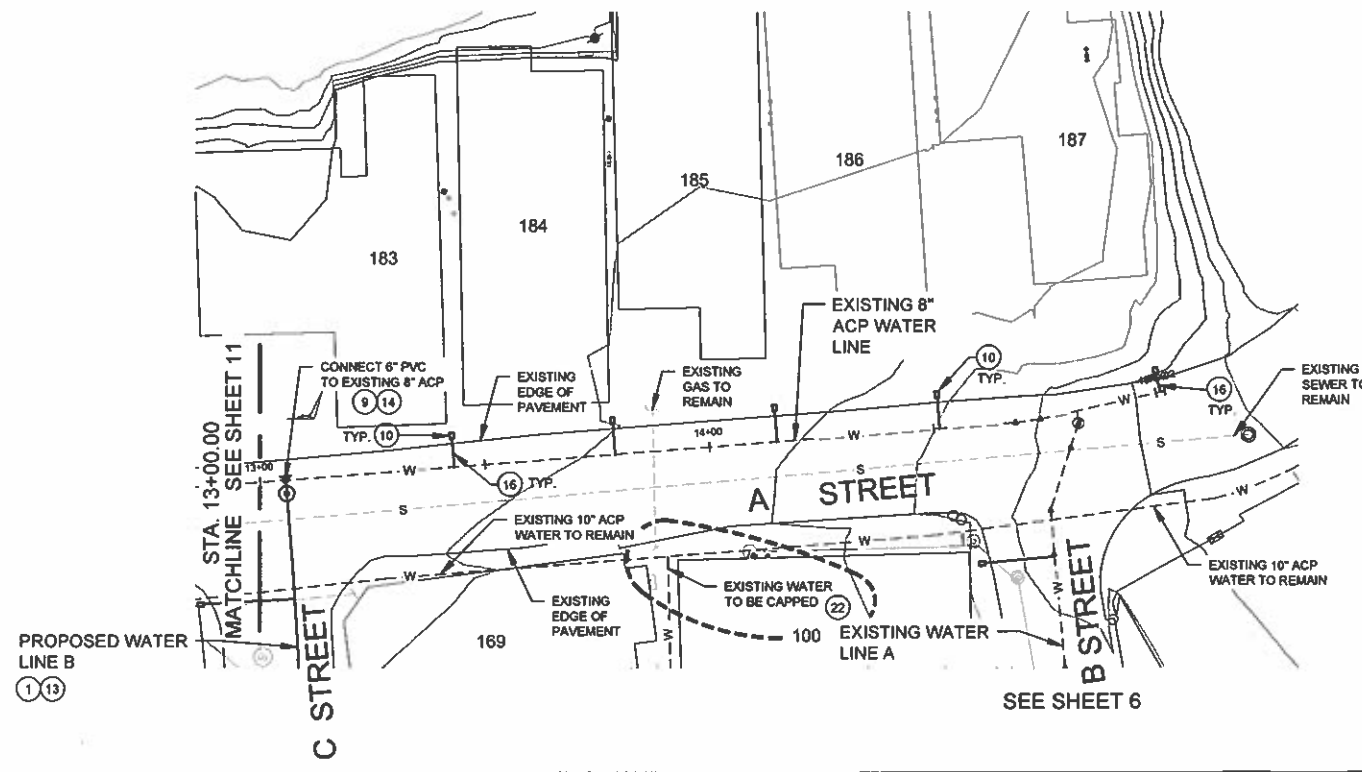
EXISTING 8" WATER LINE "A" ST.
 STA. 10+00.00 TO 13+00.00

SCALE: 1"=20'	DESIGNER: DJL	APPROVED BY: TRB	DRAWN BY: JRS
DATE: 05/21/20	SURVEY: N/A	DWG: 1219 - WATER LINE EXCISE	PAGE: 11 OF 13

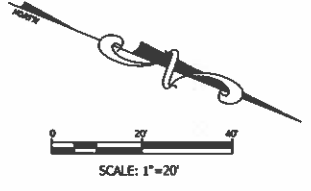
HAVASU LANDING, CHEMEHUEVI VALLEY, CA.



- CONSTRUCTION NOTES:**
- 10 DOMESTIC SERVICE CONNECTION. 1" SADDLE TAP AND 1" CORP STOP AT MAIN. INSTALL METER BOX AND METER SETTER, OLDCASTLE DURALITE MODEL 1118-18 WITH TIE R 22 POLYMER CONCRETE LID AND FORD 70 SERIES COPPERSETTER FOR 5/8" X 3/4" METER. SEE DETAIL ON SHEET 13.
 - 16 1" HDPE FOR SERVICE CONNECTION.
 - 22 INSERT LINE STOP OR FREEZE PLUG EXISTING SMALL DIAMETER WATER LINE AND INSTALL NEW, OPERATIONAL RESILIENT SEAT GATE VALVE. PROVIDE INTERIM RE-CONNECTION TO THE EXISTING WATER LINE TO ALLOW FOR SYSTEM SUPPLY DURING CONSTRUCTION. PERMANENTLY CAP THE SMALL DIAMETER LINE IMMEDIATELY AFTER THE NEWLY INSTALLED VALVE UPON COMPLETION OF CONSTRUCTION. ABANDON THE REMAINING LINE IN PLACE.



- LEGEND:**
- SYMBOL IN PROFILE DENOTES POSSIBLE LOCATION OF EXISTING CONDUIT OR PIPE CROSSING
 - SYMBOL IN PROFILE DENOTES LOCATION OF PROPOSED CONDUIT OR PIPE CROSSING
 - TRACER WIRE ACCESS POINT LOCATION



REVISIONS			
REV	DATE	DESCRIPTION	BY

PREPARED BY:

DOUBLE R
ENGINEERING SERVICES, INC.
60 ACOMA BOULEVARD S., SUITE B-104
LAKE HAVASU CITY, ARIZONA 86403
(928) 854-8800



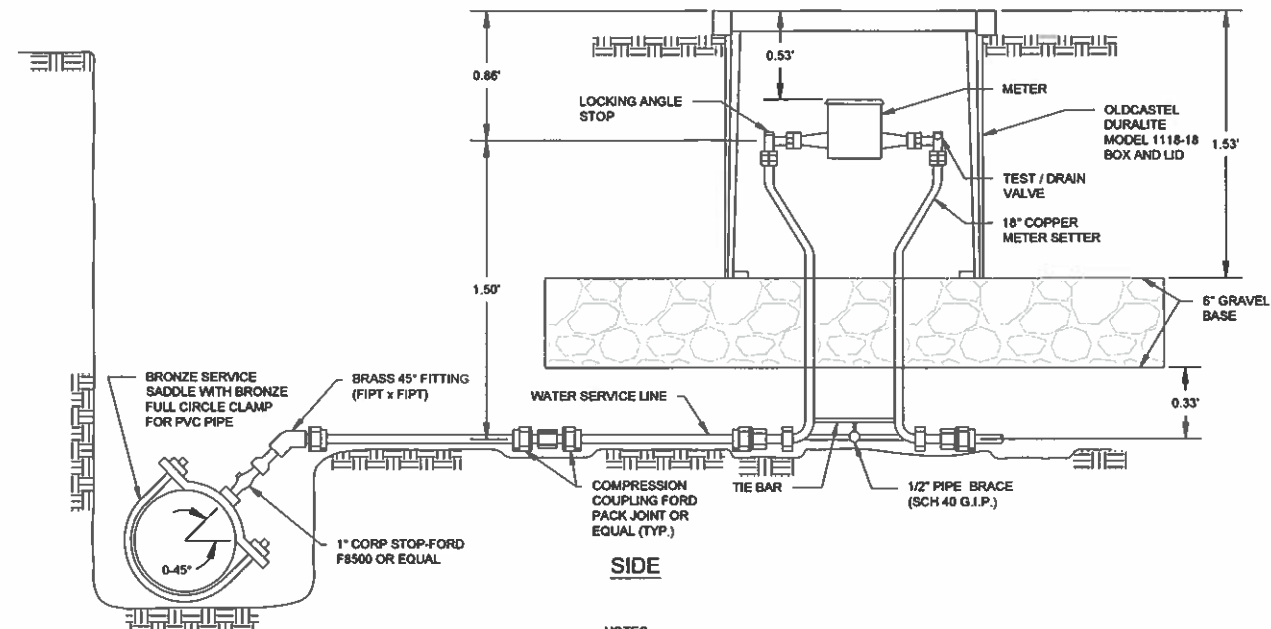
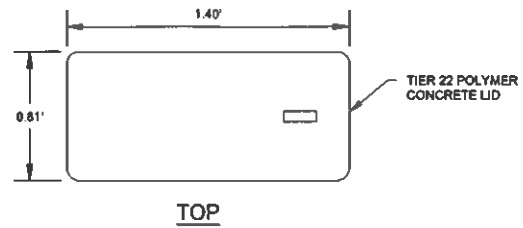
PREPARED FOR:

CHEMEHUEVI INDIAN TRIBE

P.O. BOX 1976
HAVASU LANDING, CA. 92363
(760) 858-1116

EXISTING 8" WATER LINE "A" ST.
STA. 13+00.00 TO 15+01.94

SCALE: 1"=20'	DESIGNER: DJL	APPROVED BY: TRB	DRAWN BY: JRS
DATE: 05/21/20	SURVEY: N/A	DWG: 1219 - WATER LINE EX.DWG	
HAVASU LANDING, CHEMEHUEVI VALLEY, CA.			PAGE: 12 OF 13



SIDE

NOTES:
ALL THREADED FITTINGS SHALL HAVE 1" IPS THREADS.
AWWA OR OTHER SPECIAL THREADS NOT ALLOWED.

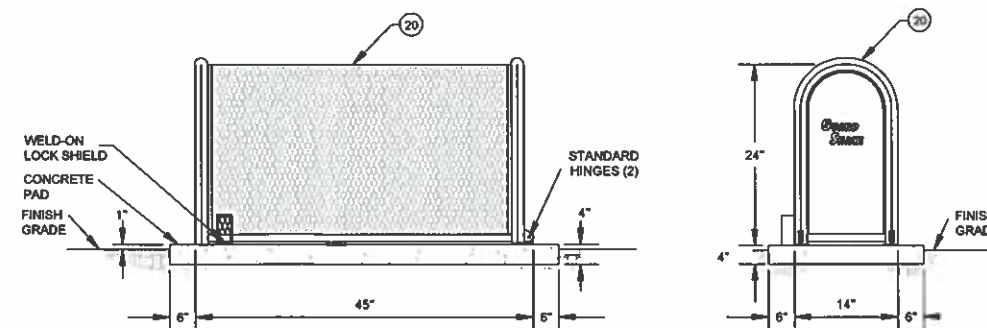
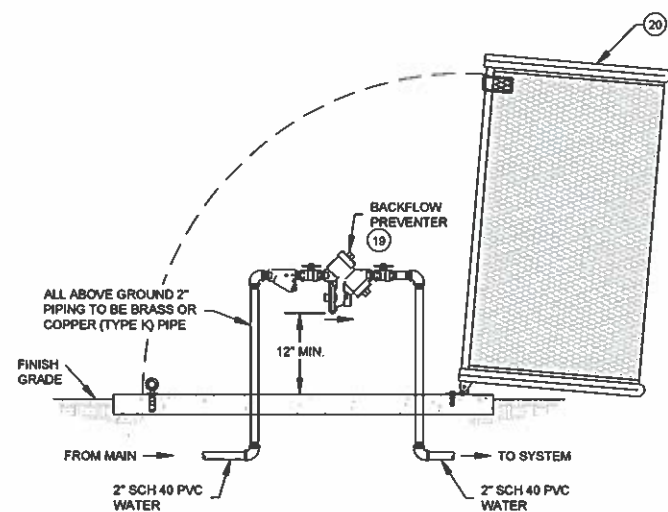
OUTLET TO COPPER SETTER IS TO HAVE A TEST / DRAIN VALVE TO ALLOW DRAINING OF HOUSE LINES.

ALL THREADED PVC FITTINGS SHALL BE SCHEDULE 80 WITH FIPT.

WATER SERVICE LINE CONNECTION 10

CONSTRUCTION NOTES:

- 10 DOMESTIC SERVICE CONNECTION. 1" SADDLE TAP AND 1" CORP STOP AT MAIN. INSTALL METER BOX AND METER SETTER, OLDCASTLE DURALITE MODEL 1118-18 WITH TIER 22 POLYMER CONCRETE LID AND, FORD 70 SERIES COPPERSETTER FOR 5/8" X 3/4" METER. SEE DETAIL ON SHEET 13.
- 19 1-1/2" WILKINS PRESSURE REDUCING BACKFLOW PREVENTER MODEL 975XLSE. SEE DETAIL ON SHEET 13.
- 20 ENCLOSURE FOR BACKFLOW PREVENTER, GUARDSHACK MODEL GS-3, OR SIMILAR. SEE DETAIL ON SHEET 13.



CHECK VALVE ASSEMBLY AND ENCLOSURE 20

GUARDSHACK™ GENERAL SPECIFICATIONS

- ALL PIPE SHALL BE 1/2" SCHEDULE 40 A.S.T.M. A-53 GRADE A- ELECTRIC WELD PIPE.
- ANGLE IRON SHALL BE 1" X 1" X 3/8" STEEL.
- EXPANDED METAL SHALL BE 3/4" SPACING X # 13 GA. FLATTENED DIAMOND PATTERN STEEL.
- ALL HINGES SHALL HAVE HIDDEN INTERNAL MOUNTING POINTS.
- THERE SHALL BE NO EXPOSED ENDS OF EXPANDED METAL ON THE OUTSIDE OF THE ENCLOSURE.
- WELDING SHALL BE A MINIMUM OF 1/2" LONG WELDS ON 1" SPACING.
- ONE LOCK SHIELD BRACKET ON HINGED UNITS SHALL BE WELDED ON END OPPOSITE HINGES.
- HARDWARE KITS PROVIDED FOR MOUNTING ENCLOSURES.
- ALL HARDWARE SHALL BE SECURELY ATTACHED TO ENCLOSURES. SEE HK-200 FOR HARDWARE SPECIFICATIONS.
- ALL ENCLOSURES SHALL WITHSTAND A MINIMUM OF 200 LBS. PER SQUARE FOOT WITHOUT ANY PERMANENT DEFLECTION OR DISTORTION.
- 3/8" SPACING BETWEEN ANGLE IRON FRAMEWORK OF ENCLOSURE AND SLAB TO PREVENT RUSTING. ONLY PIPE ENDS TO TOUCH SLAB.

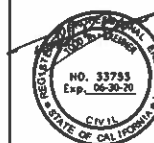
REVISIONS			
REV	DATE	DESCRIPTION	BY

PREPARED BY:



DOUBLE R
ENGINEERING SERVICES, INC.
60 ACOMA BOULEVARD S., SUITE B-104
LAKE HAVASU CITY, ARIZONA 86403
(928) 854-8800

© 2004



PREPARED FOR:

CHEMEHUEVI INDIAN TRIBE
P.O. BOX 1976
HAVASU LANDING, CA. 92363
(760) 858-1116



DETAILS

SCALE: NONE	DESIGNER: DJL	APPROVED BY: TRB	DRAWN BY: JRS
DATE: 05/21/20	SURVEY: N/A	DWG: 1210 WATER DETAILS.DWG	
HAVASU LANDING, CHEMEHUEVI VALLEY, CA.			PAGE: 13 OF 13