

EXHIBIT 4 (PHOTOS OF EAST AND WEST WELL SITES)

Photos of East and West Well Sites

Table of Contents

- A. East Well Information**
- B. East Well Plumbing Tree**
- C. East Well Controls and Shade Control Structure**
- D. West Well Information**
- E. West Well Plumbing Tree**
- F. West Well Standby Generator**
- G. Chlorinator**
- H. West Well Controls**

East Well Information

SCREEN ENDS FT.	260/350	300
BOTTOM OF WELL FT.	370	310
EXISTING CASING DIA.	12	12
TEST PUMP INFORMATION:	EAST / WEST	
DATE	3/95 - 3/95	
STATIC WATER LEVEL	154	141
PUMPING RATE(GPM)	550	510
DRAWDOWN FT.	64	48
OTHER INFORMATION:		
TANK OVERFLOW USGS EL.	624	624
WELL HEAD USGS EL.	600	585
EAST WELL INFO: INSTALLED 1-25-95		
INSTALLED BY ARI-CAL PUMP & SUPPLY		
PUMP SETTING FT.	240'	
WATER LEVEL PIPE SET	240'	
DISCHARGE COLUMN SIZE	8"	
LINESHAFT DIAMETER	1-1/4"	
SHAFT ENCLOSING TUBE SIZE	2"	
PUMP MANUFACTURE	FLOWAY	
BOWL NUMBER	10JK 20906	
CURVE NUMBER	20906-1-2	
NUMBER OF STAGES	6	
MOTOR MANUFACTURE	G.E.	
MOTOR HORSEPOWER	50	
MOTOR VOLTAGE	230/460	
MOTOR SPEED	1800 RPM	

Figure 1: Well and Pump Information – East Well Site

East Well Plumbing Tree



Figure 2: View of Plumbing Tree from the Northwest – East Well Site



Figure 3: Close up of Well Head – East Well Site

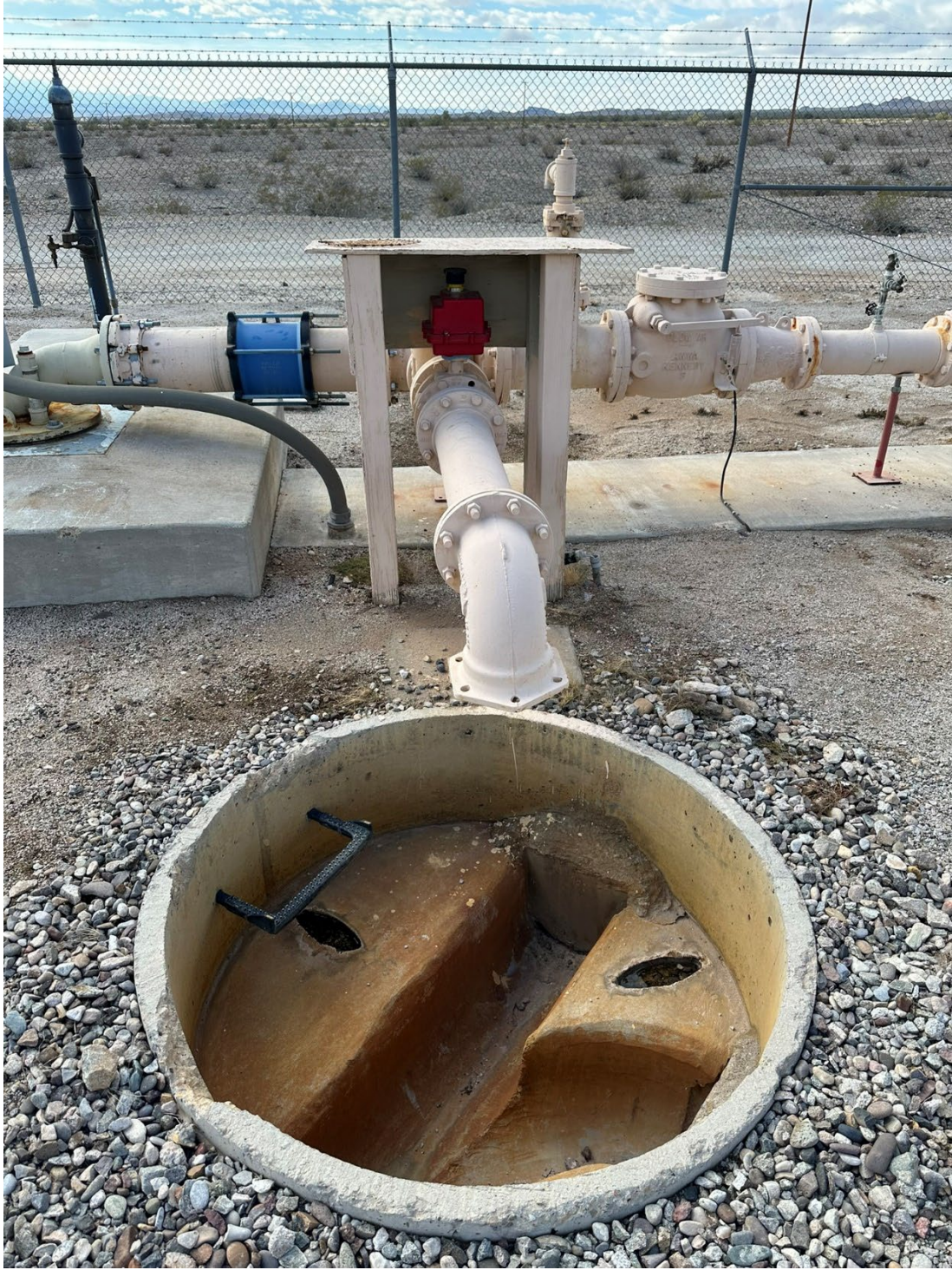


Figure 4: Discharge Point – East Well Site

East Well Controls and Shade Control Structure



Figure 5: Overview of Well Controls and Shade Control Structure – East Well Site



Figure 6: Well Control Panel – East Well Site



Figure 7: Well pump status indicator, mode select, and reset – East Well Site



Figure 8: Well Meter and Meter Socket – East Well Site

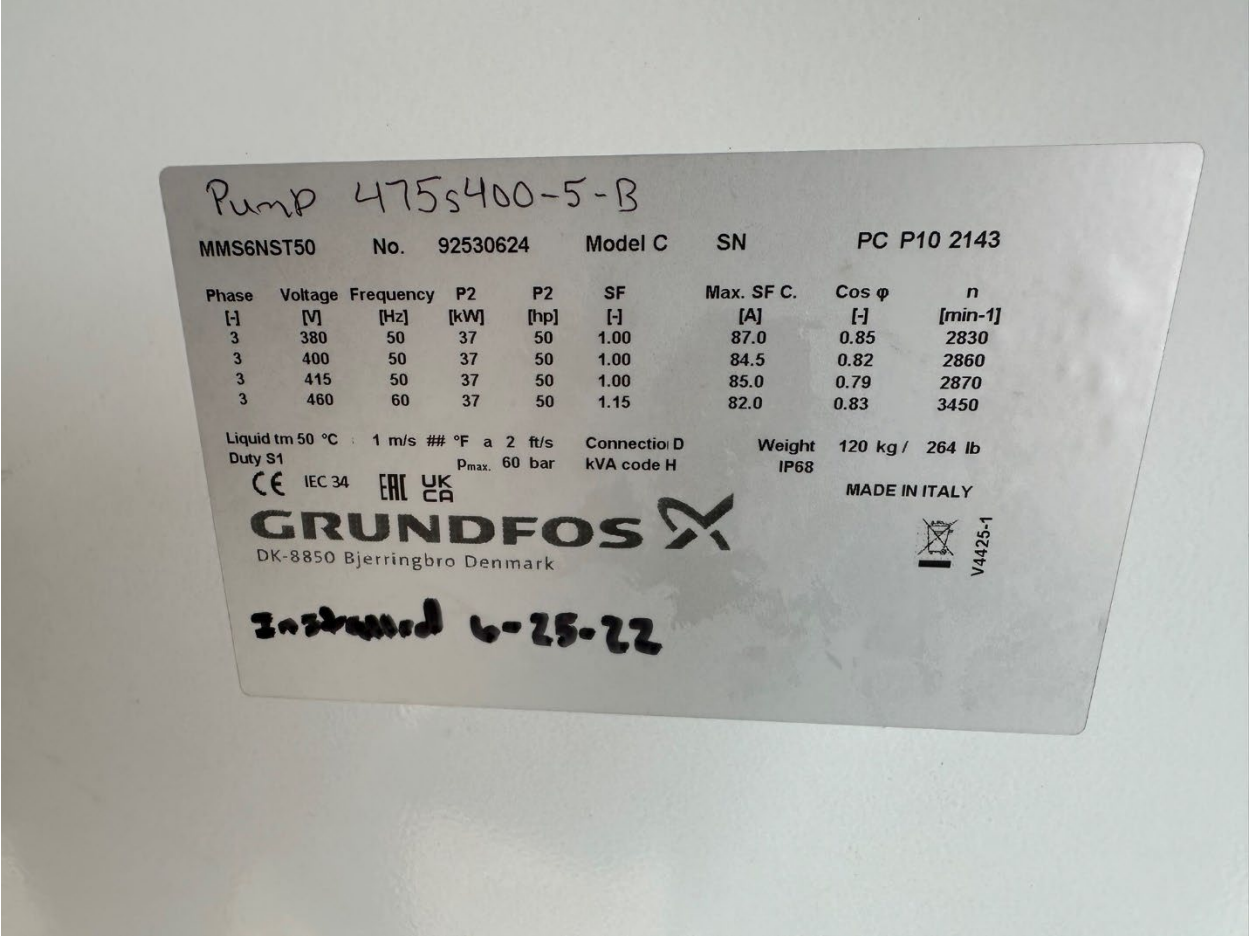


Figure 9: Pump Details – East Well Site



Figure 10: Well Surge Protection Device – East Well Site



Figure 11: Well Remote I/O – East Well Site

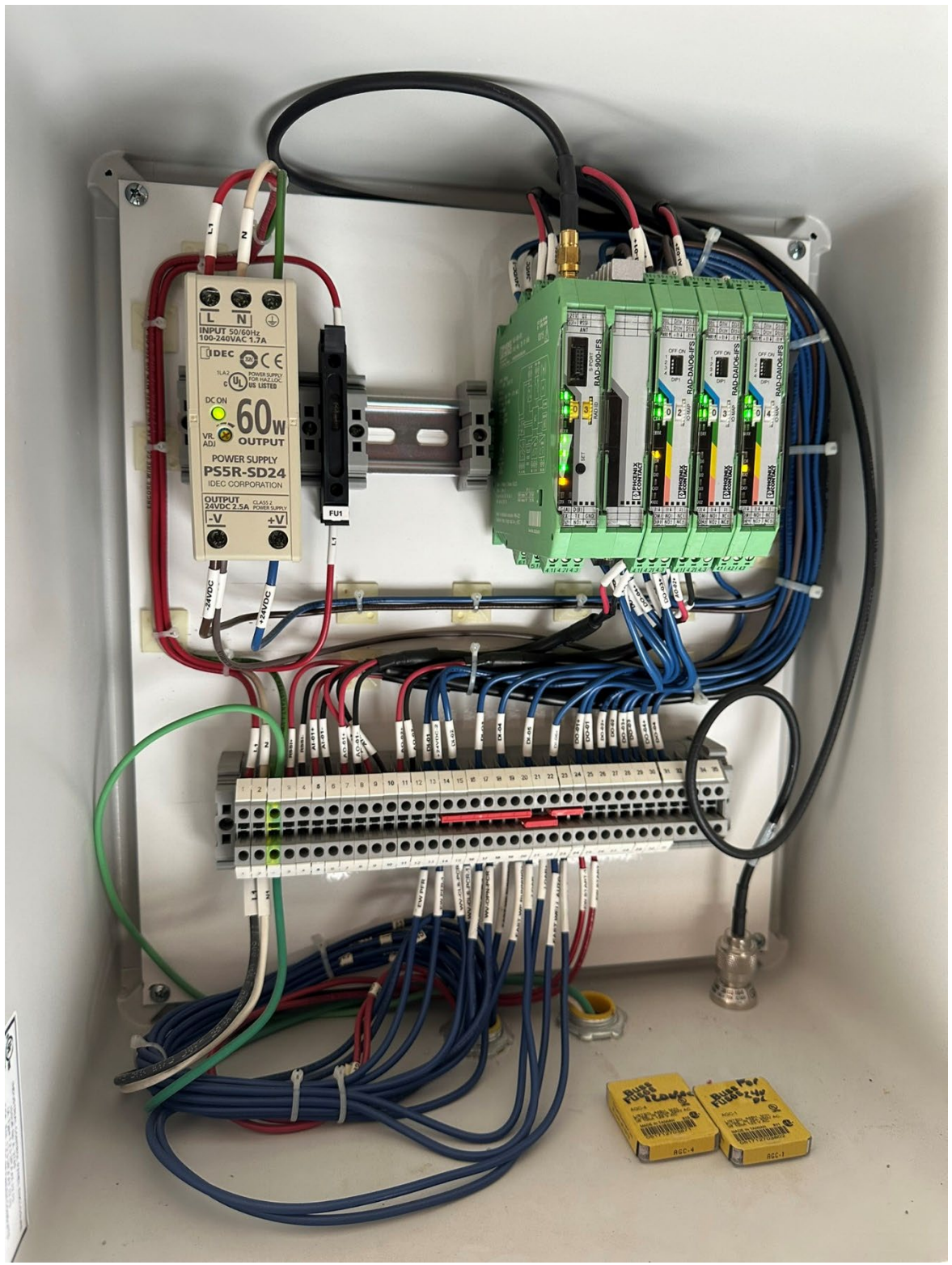


Figure 12: Inside of Well Remote I/O – East Well Site



Figure 13: Well Main Disconnect – East Well Site



Figure 14: Well Surge Suppressor – East Well Site

West Well Information

SCREEN ENDS FT.	260/250	200
BOTTOM OF WELL FT.	370	310
EXISTING CASING DIA.	12	12
TEST PUMP INFORMATION:	EAST / WEST	
DATE	3/95 - 3/95	
STATIC WATER LEVEL	154	141
PUMPING RATE (GPM)	550	510
DRAWDOWN FT.	64	48
OTHER INFORMATION:		
TANK OVERFLOW USGS EL.	624	624
WELL HEAD USGS EL.	600	585
WEST WELL INFO: INSTALLED 1-25-95		
INSTALLED BY ART-CAL PUMP & SUPPLY		
PUMP SETTING FT.	270'	
WATER LEVEL PIPE SET	270'	
DISCHARGE COLUMN SIZE	8"	
LINESHAFT DIAMETER	1-1/4"	
SHAFT ENCLOSING TUBE SIZE	2"	
PUMP MANUFACTURE	FLOWAY	
BOWL NUMBER	10JK 20906	
CURVE NUMBER	20906-1-2	
NUMBER OF STAGES	6	
MOTOR MANUFACTURE	G.E.	
MOTOR HORSEPOWER	50	
MOTOR VOLTAGE	230/460	
MOTOR SPEED	1800 RPM	

Figure 15: Well and Pump Information – West Well Site

West Well Plumbing Tree



Figure 16: Northeast View - West Well Site



Figure 17: Southeast View - West Well Site



Figure 18: View from Well Head – West Well Site



Figure 19: View of Plumbing Tree Behind Pumphouse - West Well Site



Figure 20: Close Up of Plumbing Behind Pumphouse - West Well Site

West Well Standby Generator



Figure 21: Standby Generator – West Well Site



Figure 22: View of Generator Controls – West Well Site



Figure 23: Power Source – West Well Site



Figure 24: Inside View of Power Source #1 – West Well Site



Figure 25: Inside view of Power Source #2 – West Well Site

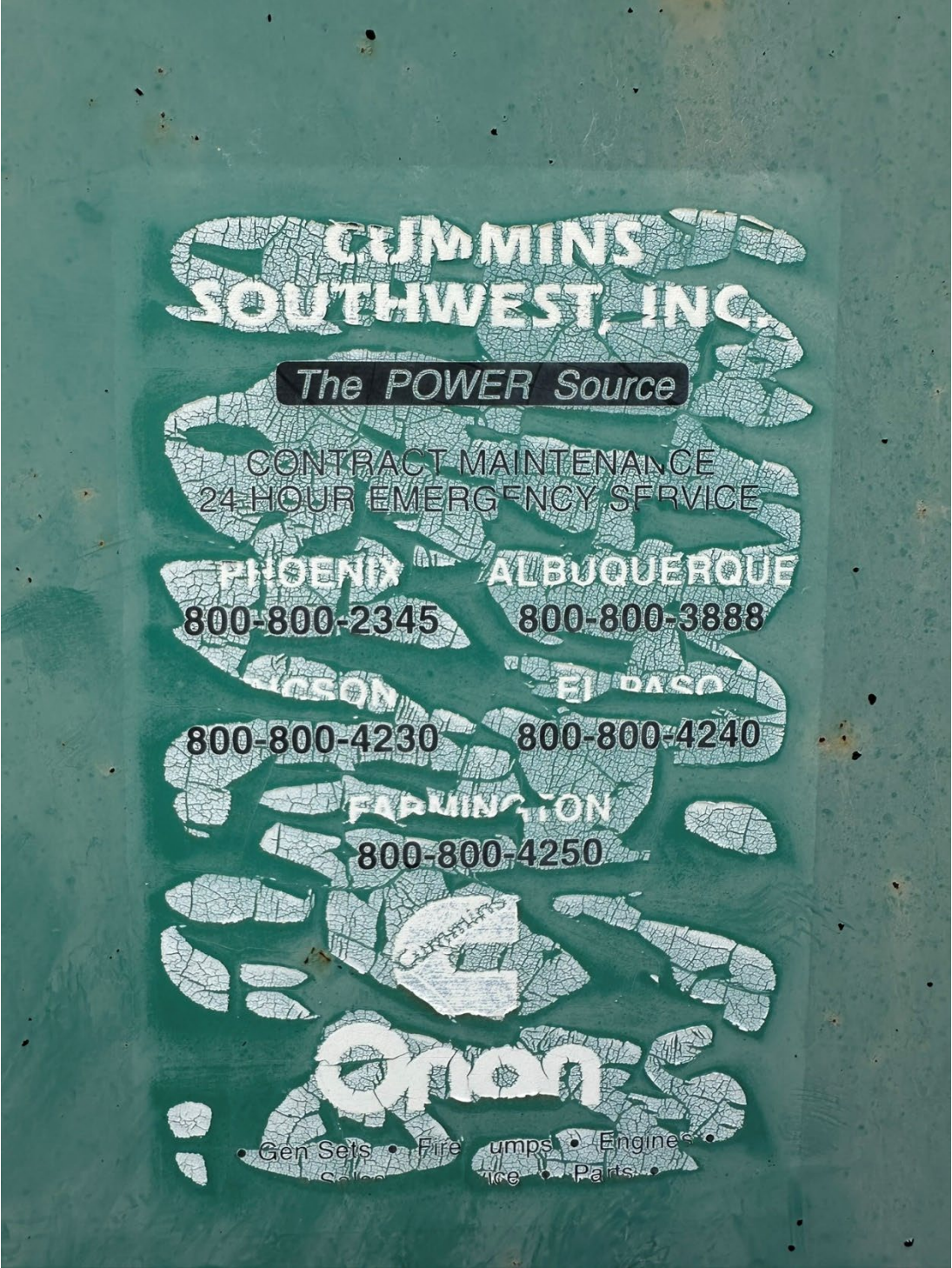


Figure 26: Power Source Manufacturer – West Well Site



Figure 27: Main Disconnect – West Well Site



Figure 28: Electrical Meter – West Well Site

Chlorinator



Figure 29: View #1 of Chlorinator System – West Well Site



Figure 30: View #2 of Chlorinator System – West Well Site



Figure 31: Well RTU – West Well Site



Figure 32: Well RTU Manufacturer Information – West Well Site



Figure 33: Chlorinator Pump Controls – West Well Site



Figure 34: Broken Feeder Tube – West Well Site



Figure 35: Missing Mixer Motor – West Well Site

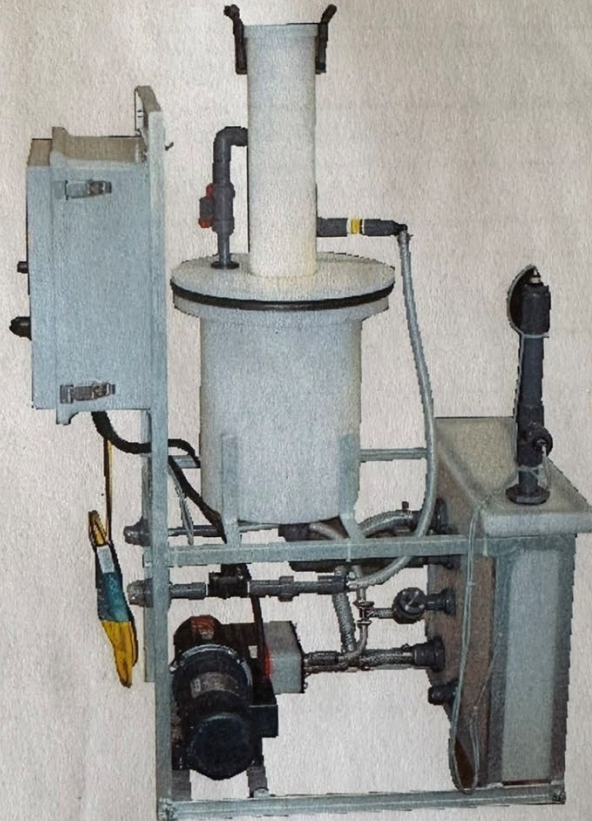


Figure 36: Chlorinator Pump – West Well Site



Figure 37: Chlorinator Pump Make and Model – West Well Site

**INSTALLATION, OPERATION AND MAINTENANCE
MANUAL
FOR MODEL
HTS10P
CALCIUM HYPOCHLORITE FEED SYSTEM**



Manufactured by



Hammonds Water Treatment Systems, Inc.
910 Rankin Road
Houston, Texas 77073
800-582-4224

Figure 38: O&M Manuel Cover Page – West Well Site

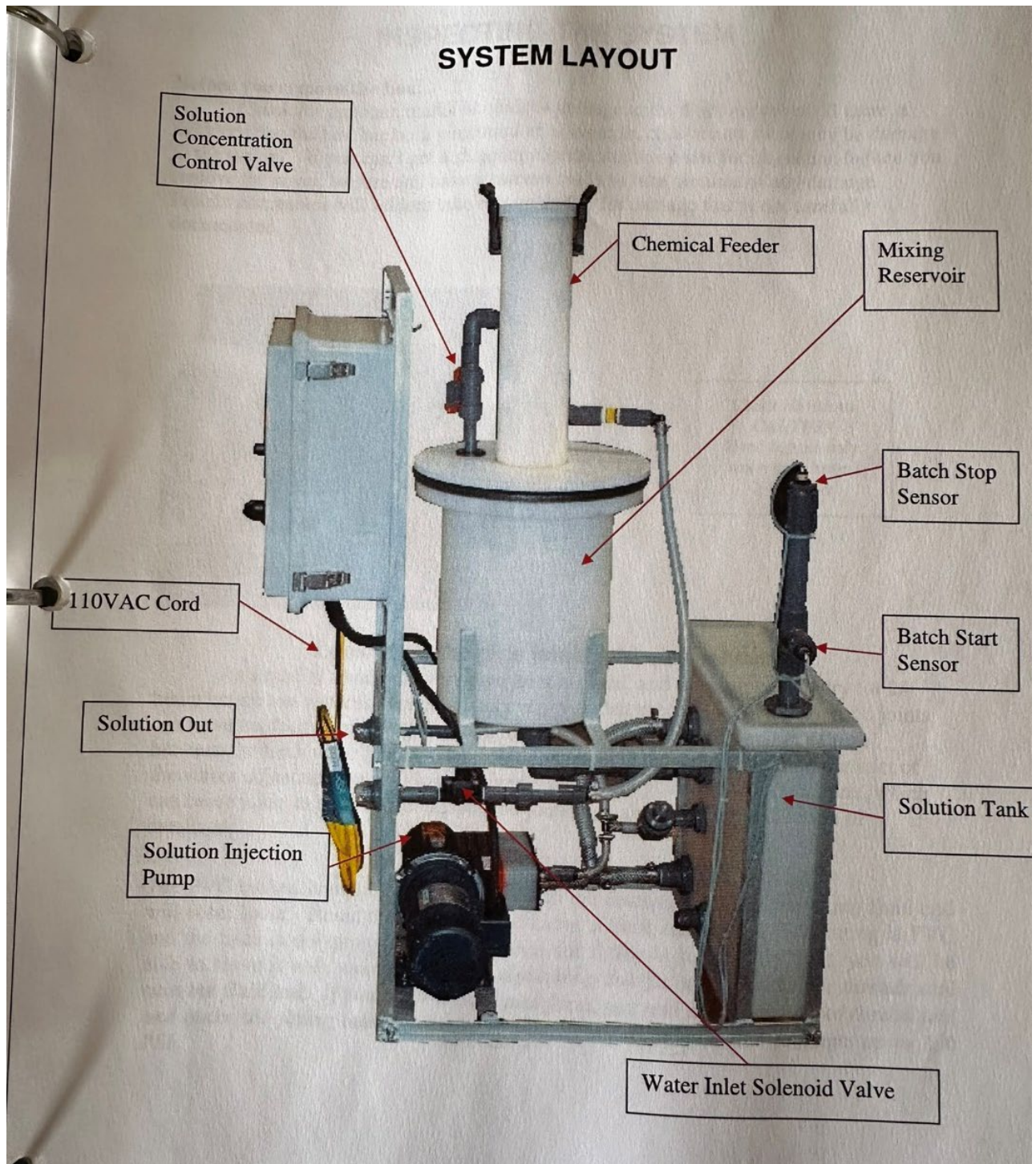


Figure 39: System Layout for Chlorination System – West Well Site

West Well Controls



Figure 40: Well RTU – West Well Site



Figure 41: Manufacturer Information for Well RTU – West Well Site



Figure 42: Well and Chlorinator Control Panel – West Well Site



Figure 44: Close Up of Controls – West Well Site



Attach to Control Box

GRUNDFOS

Stainless Steel Pumps

Pump Type 475s 400-5-8	Motor Type 50 HP	Date Installed 7-5-2022
----------------------------------	----------------------------	-----------------------------------

Grundfos Pumps Corp., Fresno, CA 93727

MMS6NST50 No. 92530624 Model C SN PC P10 2143

Phase	Voltage	Frequency	P2	P2	SF	Max. SF C.	Cos φ	n
[-]	[V]	[Hz]	[kW]	[hp]	[-]	[A]	[-]	[min ⁻¹]
3	380	50	37	50	1.00	87.0	0.85	2830
3	400	50	37	50	1.00	84.5	0.82	2860
3	415	50	37	50	1.00	85.0	0.79	2870
3	460	60	37	50	1.15	82.0	0.83	3450

Liquid tm 50 °C 1 m/s # °F a 2 ft/s Connection D Weight 120 kg / 264 lb
Duty S1 P_{max.} 60 bar kVA code H IP68

CE IEC 34 EAC UK CA **GRUNDFOS** MADE IN ITALY

DK-8850 Bjerringbro Denmark V4425-1

Figure 45: Pump Details – West Well Site