



Please remit payment to address below:

Project Resources Group, Inc.  
 Attn: Relocation Payments  
 5690 DTC Blvd., Suite 650E  
 Greenwood Village, CO 80111  
 Recovery # 704-797-1222

* Initial below to accept payment terms *	INTERIM ESTIMATED INVOICE
	*** Payment for these amounts is due within fifteen (15) days from the date of the interim invoice ***

**Plant Extension / Project Interim Estimated Invoice Agreement**

Customer Name:

authorizes the cost amount(s) provided by Project Resources Group care of:

<b>Comcast</b>	Plant Extension of Comcast's utilities at: 20518 NE 33rd CT , Sammamish WA 98074
----------------	---

<b>for Plant Extension of facilities at address location:</b> 20518 NE 33rd CT , Sammamish WA 98074	<b>Project Number:</b> JB0000405970
--	--

External Labor - Estimate	Internal Labor - Estimate	Materials - Estimate	Internal Burden - Estimate
\$794,256.66	\$6,068.70	\$27,751.56	\$544.00

Footage	Coax/Fiber	Comcast Contribution	Previous Payment
2012	Coax	<b>-\$532,518.00</b>	\$0.00

**\*\*\* All materials / cable plant is owned and maintained by Comcast \*\*\***

Plant Extension Invoice #:	256789	<b>The agreement will expire in 90 days if not signed.</b>	
PRG Project Coordinator:	Seth Unthank	<b>Interim Invoice Date</b>	<b>Expiration Date</b>
Estimated Invoiced Costs:	<b>\$296,102.92</b>	October 15, 2021	January 13, 2022

<b>IF PAID BY CREDIT CARD:</b>	<b>\$304,986.01</b>	
Customer Name:		
Billing Address:		
Phone:		
Email:		
Name & Title		
Date:		
Signature:		
AP Contact Name:		
Accounts Payable Email:		
Accounts Payable Phone:		

**Payment for the Estimated Costs is due within fifteen (15) days from the date of the interim invoice.**

*By signing this agreement, you acknowledge that you are authorized to sign on the Customer's behalf and acknowledge that the Customer agrees to the reasonableness of Comcast's estimated amounts indicated above on or after the indicated date. This is an agreement to reimburse Comcast for the estimated amounts above on the stated project only and does not provide authorization for any additional cost(s) unrelated to the stated project. This is an Interim Estimated Invoice. The document details the estimated cost as issued by our client. Once the project has been completed, a final invoice will be issued reflecting the actual construction costs, less the amount paid above. Should the project exceed 20% of the estimated costs before completion, a revised agreement will be issued. You will be liable and invoiced for the actual construction costs, once completed.*

**External Labor - Estimate**

System Design - Fiber <2,000'	1	EACH
Field Walkout/Strand Trench Mapping - Coax and/or Fiber <2,000 Ft	2	EACH
SAMMAMISH-Permit Application within 300 Ft Non-Complex	1	EACH
SAMMAMISH-Walkout for Permit Fielding <300 Ft Non-Complex	1	EACH
SAMMAMISH-Permit Application greater than 300 Ft Non-Complex	12689	FOOT
SAMMAMISH-Walkout for Permit Fielding greater than 300' Non-Complex	12689	FOOT
Drafting Base Map Strand and Trench Information <2,000'-Drafting Base Map Strand and Trench Information <2,000'	1	EACH
Drafting Base Map Strand and Trench Information >2,000' (Has To Be Drafted In Spatial)-Drafting Base Map Strand and Trench Information >2,000'	10906	FOOT
System Design - Coax <2,000' (Has To Be Drafted In Spatial)-System Design - Coax <2,000 Ft	1	EACH
System Design - Coax >2,000' (Has To Be Drafted In Spatial)-System Design - Coax >2,000' (Has To Be Drafted In Spatial)	10906	FOOT
Walkout and Field Verification of Existing Outside Plant - Coax and/or Fiber >2,000 Ft	11522	FOOT
redesign, mux case updated-Fiber Splice Updates	1	EACH
ESTIMATE CREATION-Estimate Creation	1	EACH
PROOF CONDUIT-Proof Existing Conduit	500	FOOT
"4" DIRECTIONAL BORE "-Span Placement 4" Directional Bore (SMB, MetroE, Fiber Deep)	15451	FOOT
PLACE VAULT-Install Medium 18"x24"x24" Vault	11	EACH
INSTALL TAP/SPLITTER PED-Install Tap/Splitter Pedestal	74	EACH
COAXIAL COLD SPLICE-Coaxial Cold Splicing	13439	FOOT
COAXIAL COLD SPLICE ACTIVATION-Coaxial Cold Splice Activation	13439	FOOT
PLACE/MOUNT NEW GROUND POWER SUPPLY-Place New Ground Mounted Power Supply	1	EACH
HANG/MOUNT NODE & SPLICE FIBER/COAX-Hang/Mount Node and Splice Fiber and Coax to Node (Same Trip)	1	EACH
INSTALL NEW SPLICE ENCLOSURE-Install New Splice Enclosure	1	EACH
FIBER ENCLOSURE RE-ENTRY-Fiber Enclosure Re-Entry	2	EACH
SPLICE LOOSE TUBE FIBER-Splice Loose Tube Fiber (Per Fusion 1-4)	6	EACH
PULL COAX AND/OR FIBER-Pull Coax, Fiber or Innerduct Separate Trip	15951	FOOT
SPLICE SPLITTER-Splice Splitter/DC	7	EACH
SPLICE ACTIVE-Splice Active Device	7	EACH
Hard Surface Pot Hole	70	EACH
ELECTRICIAN TO PLACE/HOOK UP PS- BID WORK-Bid Work		QUOTE
DUMP FEES-Dump Fees		QUOTE
MISC SMALL MATERIALS-Miscellaneous Small Material Purchases		QUOTE
FLAGGERS TRAFFIC CONTROL-Traffic Control		QUOTE
ASPHALT CUT W/ RESTORATION-Asphalt Cut with Restoration		QUOTE
CONCRETE CUT W/ RESTORATION-Concrete Cut with Restoration		QUOTE
POT HOLE REPAIR-Pot Hole Repair (Asphalt or Concrete)		QUOTE

**Materials - Estimate**

.625 INCH. PIN CONNECTOR. 2 INCH PIN. P3/T10. 3 PIECE (TEMPORARY FOR WEST ONLY - PPC)	90
KS PORT TERMINATOR ADAPTER. 2.0 INCH PIN (LONG PIN) . 2 PIECE (TEMPORARY FOR WEST ONLY - PPC)	7
RLS12-3R-15A: 3 WAY SPLITTER 5-1218 MHZ 15 AMPERE (REVERSED PORTS) AMPERE 105DB EMI SHIELDING. 1509891-015.	1
RLS12-2SP-15A-90V - 2 Way splitter 5-1218 MHz 15 Ampere w/90V Surge Protection	3
RLDC12-12-15A - 12 dB directional coupler 5-1218 MHz 15 Ampere	1
vault, 13x24, 15" deep,L bolt, with Shield lid, Comcast logo	1
XM3 Power Supply,1620W,(18A at 90V,60V option),120VAC,Embedded DOCSIS Transponder-DM3 and Smart AlphaGuard, 1 or 2 string	1
HOUSING SPLICE BLOCK ADAPTER. 2.75 INCH SEPERATION	1
FIBER OPTIC SPLICE. HEAT SHRINK PROTECTIVE SLEEVE. SINGLE FUSION. PN# CFSP-12-61. CANUSA. 100 PER PACKAGE	1
BLACK. VINYL. ALL WEATHER. ELECTRICAL. TAPE. 3/4 INCH X 60-66 FOOT ROLL	5
GS7000 1.2 GHz, HO, 85102, 1PS, LIRX, 1x4FCM, 4x2RCM-2:1EDR,STDFBRTY. PN# GS7KH811L13XXXXXX	1
T-EQ-20-Q,TAP,PLUG-IN EQUALIZER,1218 MHZ,20 DB, FINISHED GOOD	1
T-EQ-14-Q,TAP,PLUG-IN EQUALIZER,1218 MHZ,14 DB, FINISHED GOOD	1
T-EQ-10-Q,TAP,PLUG-IN EQUALIZER,1218 MHZ,10 DB, FINISHED GOOD	3
T-EQ-8-Q,TAP,PLUG-IN EQUALIZER,1218 MHZ,8 DB, FINISHED GOOD	3
T-EQ-6-Q,TAP,PLUG-IN EQUALIZER,1218 MHZ,6 DB, FINISHED GOOD	5
T-EQ-4-Q,TAP,PLUG-IN EQUALIZER,1218 MHZ,4 DB, FINISHED GOOD	8
T-EQ-2-Q,TAP,PLUG-IN EQUALIZER,1218 MHZ,2 DB, FINISHED GOOD	2
T-CS-10-Q,TAP,PLUG-IN CABLE SIMULATOR,1218 MHz,10 DB,FINISHED GOOD	4
T-CS-8-Q,TAP,PLUG-IN CABLE SIMULATOR,1218 MHz,8 DB,FINISHED GOOD	7
T-CS-6-Q,TAP,PLUG-IN CABLE SIMULATOR,1218 MHz,6 DB,FINISHED GOOD	7
T-CS-4-Q,TAP,PLUG-IN CABLE SIMULATOR,1218 MHz,4 DB,FINISHED GOOD	5
T-CS-2-Q,TAP,PLUG-IN CABLE SIMULATOR,1218 MHz,2 DB,FINISHED GOOD	5
FFT8-26Q,TAP,1.2 GHZ AUTO-SEIZE F-CONNECTOR W/ PLUG-IN EQ CAPABILITY AND RF/AC BYPASS HOUSING,FINISHED GOOD	1
FFT8-23Q,TAP,1.2 GHZ AUTO-SEIZE F-CONNECTOR W/ PLUG-IN EQ CAPABILITY AND RF/AC BYPASS HOUSING,FINISHED GOOD	1
FFT4-26Q,TAP,1.2 GHZ AUTO-SEIZE F-CONNECTOR W/ PLUG-IN EQ CAPABILITY AND RF/AC BYPASS HOUSING,FINISHED GOOD	3
FFT4-23Q,TAP,1.2 GHZ AUTO-SEIZE F-CONNECTOR W/ PLUG-IN EQ CAPABILITY AND RF/AC BYPASS HOUSING,FINISHED GOOD	7
FFT4-20Q,TAP,1.2 GHZ AUTO-SEIZE F-CONNECTOR W/ PLUG-IN EQ CAPABILITY AND RF/AC BYPASS HOUSING,FINISHED GOOD	8
FFT4-17Q,TAP,1.2 GHZ AUTO-SEIZE F-CONNECTOR W/ PLUG-IN EQ CAPABILITY AND RF/AC BYPASS HOUSING,FINISHED GOOD	2
FFT4-15.5Q,TAP,1.2 GHZ AUTO-SEIZE F-CONNECTOR W/ PLUG-IN EQ CAPABILITY AND RF/AC BYPASS HOUSING,FINISHED GOOD	3
FFT4-14Q,TAP,1.2 GHZ AUTO-SEIZE F-CONNECTOR W/ PLUG-IN EQ CAPABILITY AND RF/AC BYPASS HOUSING,FINISHED GOOD	5
FFT4-10Q,TAP,1.2 GHZ AUTO-SEIZE F-CONNECTOR W/ PLUG-IN EQ CAPABILITY AND RF/AC BYPASS HOUSING,FINISHED GOOD	6
FFT4-7TQ,TAP,1.2 GHZ AUTO-SEIZE F-CONNECTOR W/ PLUG-IN EQ CAPABILITY AND RF/AC BYPASS HOUSING,FINISHED GOOD	2
FFT2-29Q,TAP,1.2 GHZ AUTO-SEIZE F-CONNECTOR W/ PLUG-IN EQ CAPABILITY AND RF/AC BYPASS HOUSING,FINISHED GOOD	3
FFT2-26Q,TAP,1.2 GHZ AUTO-SEIZE F-CONNECTOR W/ PLUG-IN EQ CAPABILITY AND RF/AC BYPASS HOUSING,FINISHED GOOD	1
FFT2-23Q,TAP,1.2 GHZ AUTO-SEIZE F-CONNECTOR W/ PLUG-IN EQ CAPABILITY AND RF/AC BYPASS HOUSING,FINISHED GOOD	6
FFT2-20Q,TAP,1.2 GHZ AUTO-SEIZE F-CONNECTOR W/ PLUG-IN EQ CAPABILITY AND RF/AC BYPASS HOUSING,FINISHED GOOD	7
FFT2-17Q,TAP,1.2 GHZ AUTO-SEIZE F-CONNECTOR W/ PLUG-IN EQ CAPABILITY AND RF/AC BYPASS HOUSING,FINISHED GOOD	5
FFT2-14Q,TAP,1.2 GHZ AUTO-SEIZE F-CONNECTOR W/ PLUG-IN EQ CAPABILITY AND RF/AC BYPASS HOUSING,FINISHED GOOD	1
FFT2-12Q,TAP,1.2 GHZ AUTO-SEIZE F-CONNECTOR W/ PLUG-IN EQ CAPABILITY AND RF/AC BYPASS HOUSING,FINISHED GOOD	1
FFT2-10Q,TAP,1.2 GHZ AUTO-SEIZE F-CONNECTOR W/ PLUG-IN EQ CAPABILITY AND RF/AC BYPASS HOUSING,FINISHED GOOD	1
FFT2-7Q,TAP,1.2 GHZ AUTO-SEIZE F-CONNECTOR W/ PLUG-IN EQ CAPABILITY AND RF/AC BYPASS HOUSING,FINISHED GOOD	1
FFT2-4TQ,TAP,1.2 GHZ AUTO-SEIZE F-CONNECTOR W/ PLUG-IN EQ CAPABILITY AND RF/AC BYPASS HOUSING,FINISHED GOOD	2
FFT2-4TQ,TAP,1.2 GHZ AUTO-SEIZE F-CONNECTOR W/ PLUG-IN EQ CAPABILITY AND RF/AC BYPASS HOUSING,FINISHED GOOD	2
SSP-9Q,COUPLER,DIRECTIONAL 1.2 GHZ 15A 9DB WITH ENHANCED HIGH CURRENT CAPABILITY,FINISHED GOOD	2
STARLINE ERGONOMIC. MINI BRIDGER STATION.1 GHZ. 5-42/54-1003MHZ K-SPLIT. 2 OUTPUT. 42dB GAIN. PN# 821000-037-00. MOTOROLA. MB100K-2HSXH-	2
STARLINE ERGONOMIC. LINE EXTENDER STATION.1 GHZ. 5-42/54-1003MHZ K-SPLIT. 1 OUTPUT. 34dB GAIN. PN# 811000-033-00. MOTOROLA. BLE100K-HSXH-	5
.625 INCH P3/T10. JACKETED. FLOODED U/G. COAXIAL FEEDER CABLE	13,439
FIBER SPLICE ENCLOSURE. DOME STYLE. GEL SEALED. PN# FOSC 450-D6-6-36-1-D6V. TYCO	1
CONDUIT 4 IN. PVC SCH 40 BELLED END 20 FT. LENGTH	15,451
HDPE 1730, 48" DEEP W/L-BOLT	10
CONDUIT, SWEEP, 4 X 45 X 36, SCH 40, BELLED, UL GRAY	20
CONDUIT, CAP, 4", PLASTIC, RED, 100 PER BAG	160
CABLE, SERVICE, 150 FEET, FOR OPTICAL RECEIVER, 6 FIBERS WITH 6 SC/APC CONNECTORS AND 36" FAN-OUT	1
CONDUIT, SWEEP, 4 X 90 X 36, SCH 40, BELLED, UL GRAY	10
PVC CEMENT. CLEAR. #707 QTS	3
No 6 AWG. GROUND WIRE. BARE. SOLID COPPER	20
PULLING LINE, FIBER POLY, 6500'	15
5/8 INCH X 8 FEET. GROUND ROD. BONDED COPPER. UL LISTED	85
GROUND CLAMP. 5/8" GROUND ROD. HEX HEAD BOLT. 1/0 STR-8 SOL. HEAVY DUTY. UL LISTED	85

## Additional Information and Notes

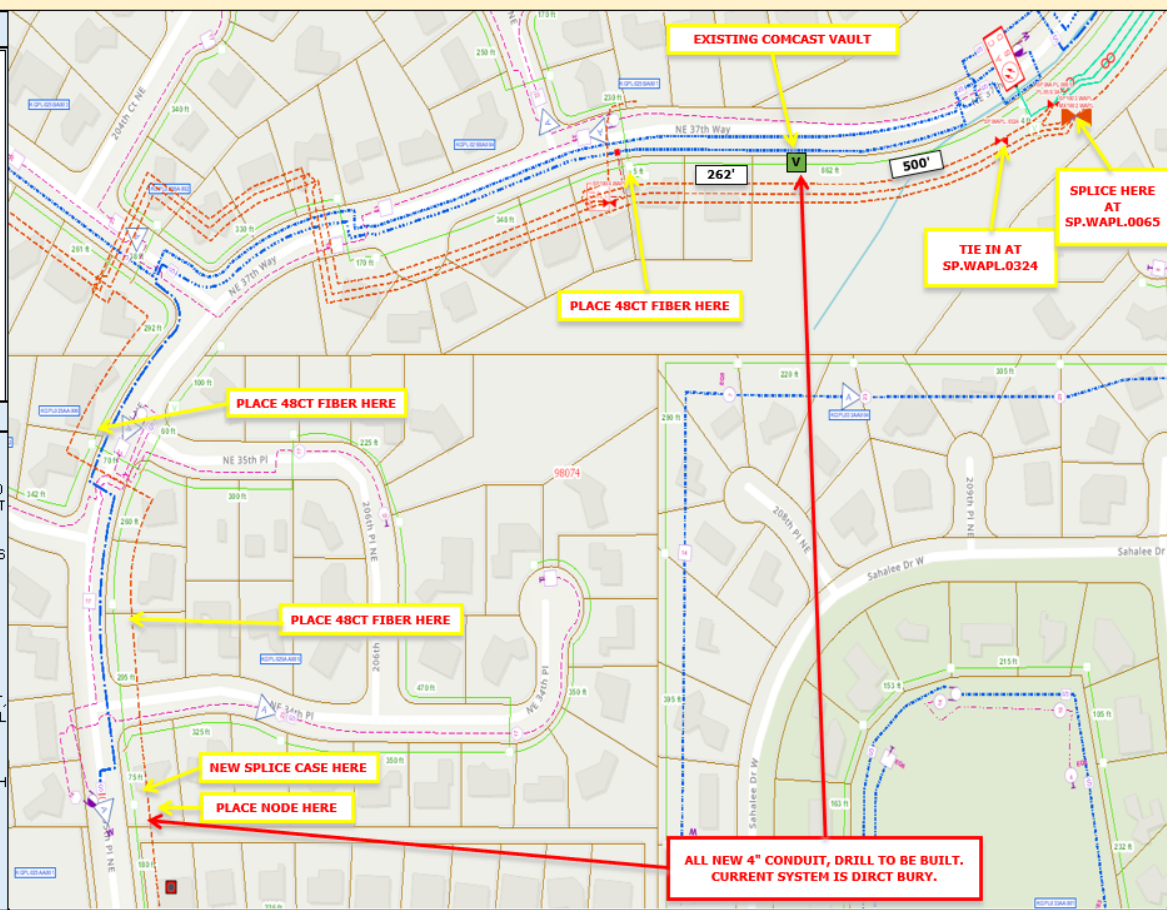
(S.D.U.) FROM EXISTING VAULT (NODE PL25 WAKGPL025) SPLICE AT SP.WAPL.0065 AND TIE IN TO SP.WAPL.0324 WITH NEW 48CT FIBER. PROOF AND PULL APPROXIMATELY 500' OF EXISTING (2) 2" CONDUIT TO EXISTING COMCAST VAULT. FROM EXISTING COMCAST VAULT DRILL AND PLACE NEW 4" CONDUIT & 48CT FIBER 262' TO EXISTING NODE CABINET AT 20611 NE 37TH WAY. FROM EXISTING NODE CABINET DRILL AND PLACE NEW 4" CONDUIT APPROXIMATELY 347' TO EXISTING PED AND UPGRADE OLD PED WITH NEW PED. CONTINUE NORTH APPROXIMATELY 40' ACROSS NE 37TH WAY AND PLACE (1) NEW 17"X24" GREEN TOP VAULT. CONTINUE WEST APPROXIMATELY 91' 4" CONDUIT, DRILL AND NEW 48CT FIBER TO EXISTING PED AT 20524 NE 37TH WAY UPGRADE OLD PED WITH NEW PED. CONTINUE WEST THEN NORTH ON NE 37TH WAY APPROXIMATELY 329' WITH NEW 4" CONDUIT, DRILL AND NEW 48CT FIBER TO EXISTING DOGHOUSE. CONTINUE WEST ACROSS NE 37TH WAY APPROXIMATELY 47' WITH NEW 4" CONDUIT, DRILL AND NEW 48CT FIBER AND PLACE (1) 17"X24" GREEN TOP VAULT. CONTINUE SOUTH ON NE 37TH WAY AND THEN WEST ON 205TH PL NE APPROXIMATELY 293' WITH NEW 4" CONDUIT, DRILL AND NEW 48CT FIBER TO EXISTING NODE CABINET AT 3517 205TH PL NE. CONTINUE SOUTH FROM EXISTING NODE CABINET APPROXIMATELY 63' WITH NEW 4" CONDUIT, NEW DRILL, NEW 48CT FIBER AND PLACE (1) NEW 17"X24" GREEN TOP VAULT. CONTINUE WEST ON 205TH PL NE WITH NEW 4" CONDUIT, DRILL, NEW 48CT FIBER TO EXISTING PED AT 3434 205TH PL NE AND UPGRADE EXISTING PED WITH NEW PED. CONTINUE WITH 4" CONDUIT, DRILL, AND NEW 48CT FIBER APPROXIMATELY 280' TO EXISTING DOG HOUSE, UPGRADE EXISTING DOGHOUSE WITH NEW NODE CABINET, PLACE NEW PLICE CASE HERE AND PLACE NEW NODE HERE... END...

### Legend

New Ped		Pole	
New Vault		Lock Box	
Existing U/G		Footage	
Existing Aerial		Text Box	
New U/G		Callout Arrow	
New Aerial		New Tap	
Interior Path		Phase Identifier	
Footage Break		Power Supply	
Fiber Splice Point		Hard Surface Cut	
Storage Loop		Abandoned Cable	
Riser			

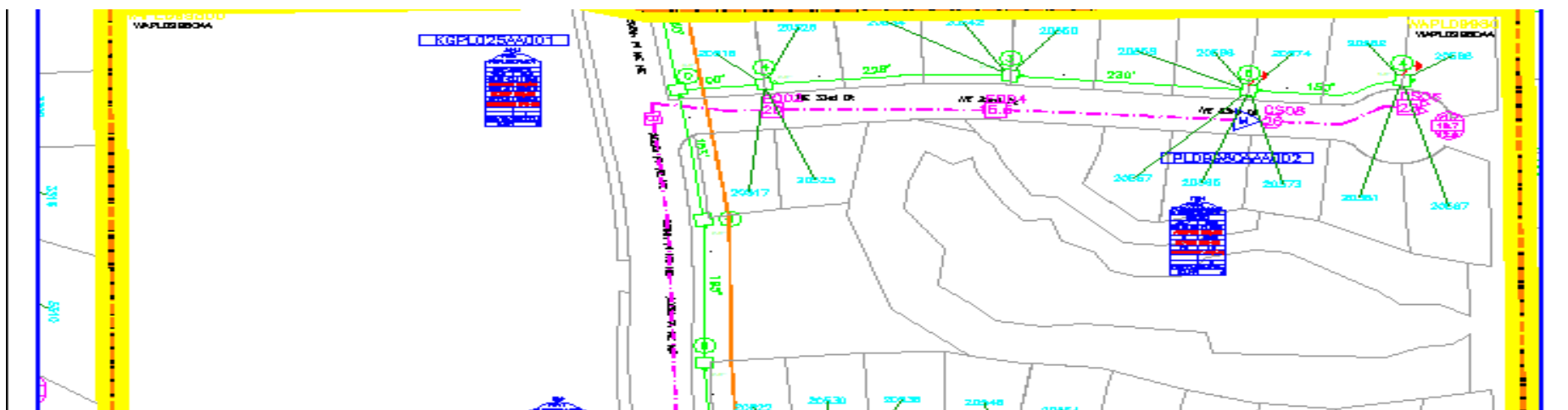
### Provide Clear Construction Details

(S.D.U.) FROM EXISTING VAULT (NODE PL25 WAKGPL025) SPLICE AT SP.WAPL.0065 AND TIE IN TO SP.WAPL.0324 WITH NEW 48CT FIBER. PROOF AND PULL APPROXIMATELY 500' OF EXISTING (2) 2" CONDUIT TO EXISTING COMCAST VAULT. FROM EXISTING COMCAST VAULT DRILL AND PLACE NEW 4" CONDUIT & 48CT FIBER 262' TO EXISTING NODE CABINET AT 20611 NE 37TH WAY. FROM EXISTING NODE CABINET DRILL AND PLACE NEW 4" CONDUIT APPROXIMATELY 347' TO EXISTING PED AND UPGRADE OLD PED WITH NEW PED. CONTINUE NORTH APPROXIMATELY 40' ACROSS NE 37TH WAY AND PLACE (1) NEW 17"X24" GREEN TOP VAULT. CONTINUE WEST APPROXIMATELY 91' 4" CONDUIT, DRILL AND NEW 48CT FIBER TO EXISTING PED AT 20524 NE 37TH WAY UPGRADE OLD PED WITH NEW PED. CONTINUE WEST THEN NORTH ON NE 37TH WAY APPROXIMATELY 329' WITH NEW 4" CONDUIT, DRILL AND NEW 48CT FIBER TO EXISTING DOGHOUSE. CONTINUE WEST ACROSS NE 37TH WAY APPROXIMATELY 47' WITH NEW 4" CONDUIT, DRILL AND NEW 48CT FIBER AND PLACE (1) 17"X24" GREEN TOP VAULT. CONTINUE SOUTH ON NE 37TH WAY AND THEN WEST ON 205TH PL NE APPROXIMATELY 293' WITH NEW 4" CONDUIT, DRILL AND NEW 48CT FIBER TO EXISTING NODE CABINET AT 3517 205TH PL NE. CONTINUE SOUTH FROM EXISTING NODE CABINET APPROXIMATELY 63' WITH NEW 4" CONDUIT, NEW DRILL, NEW 48CT FIBER AND PLACE (1) NEW 17"X24" GREEN TOP VAULT. CONTINUE WEST ON 205TH PL NE WITH NEW 4" CONDUIT, DRILL, NEW 48CT FIBER TO EXISTING PED AT 3434 205TH PL NE AND UPGRADE EXISTING PED WITH NEW PED. CONTINUE WITH 4" CONDUIT, DRILL, AND NEW 48CT FIBER APPROXIMATELY 280' TO EXISTING DOG HOUSE, UPGRADE EXISTING DOGHOUSE WITH NEW NODE CABINET, PLACE NEW PLICE CASE HERE AND PLACE NEW NODE HERE... END...



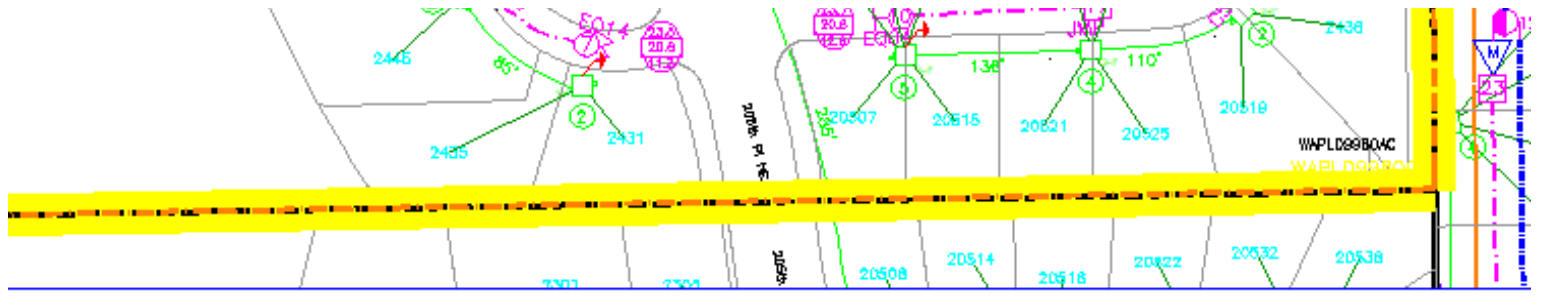
	STREET NUMBER	RE-DIRECT	STREET_NA	STREET_TY	CITY	STATE	POSTAL
1	20518	NE	33RD	CT	SAMMAM	WA	98074
2	20526	NE	33RD	CT	SAMMAM	WA	98074
3	20534	NE	33RD	CT	SAMMAM	WA	98074
4	20542	NE	33RD	CT	SAMMAM	WA	98074
5	20550	NE	33RD	CT	SAMMAM	WA	98074
6	20558	NE	33RD	CT	SAMMAM	WA	98074
7	20566	NE	33RD	CT	SAMMAM	WA	98074
8	20574	NE	33RD	CT	SAMMAM	WA	98074
9	20582	NE	33RD	CT	SAMMAM	WA	98074
10	20588	NE	33RD	CT	SAMMAM	WA	98074
11	20587	NE	33RD	CT	SAMMAM	WA	98074
12	20581	NE	33RD	CT	SAMMAM	WA	98074
13	20573	NE	33RD	CT	SAMMAM	WA	98074
14	20565	NE	33RD	CT	SAMMAM	WA	98074
15	20557	NE	33RD	CT	SAMMAM	WA	98074
16	20525	NE	33RD	CT	SAMMAM	WA	98074
17	20517	NE	33RD	CT	SAMMAM	WA	98074
18	20522	NE	32ND	CT	SAMMAM	WA	98074
19	20530	NE	32ND	CT	SAMMAM	WA	98074
20	20538	NE	32ND	CT	SAMMAM	WA	98074
21	20546	NE	32ND	CT	SAMMAM	WA	98074
22	20554	NE	32ND	CT	SAMMAM	WA	98074
23	20562	NE	32ND	CT	SAMMAM	WA	98074
24	20570	NE	32ND	CT	SAMMAM	WA	98074
25	20578	NE	32ND	CT	SAMMAM	WA	98074
26	20586	NE	32ND	CT	SAMMAM	WA	98074
27	20594	NE	32ND	CT	SAMMAM	WA	98074
28	20593	NE	32ND	CT	SAMMAM	WA	98074
29	20585	NE	32ND	CT	SAMMAM	WA	98074
30	20577	NE	32ND	CT	SAMMAM	WA	98074
31	20569	NE	32ND	CT	SAMMAM	WA	98074
32	20561	NE	32ND	CT	SAMMAM	WA	98074
33	20553	NE	32ND	CT	SAMMAM	WA	98074
34	20545	NE	32ND	CT	SAMMAM	WA	98074
35	20535	NE	32ND	CT	SAMMAM	WA	98074
36	20527	NE	32ND	CT	SAMMAM	WA	98074
37	3007		206TH	WAY	SAMMAM	WA	98074
38	3015		206TH	WAY	SAMMAM	WA	98074
39	3021		206TH	WAY	SAMMAM	WA	98074
40	3012		206TH	WAY	SAMMAM	WA	98074
41	3020		206TH	WAY	SAMMAM	WA	98074
42	3026		206TH	WAY	SAMMAM	WA	98074
43	3032		206TH	WAY	SAMMAM	WA	98074
44	3038		206TH	WAY	SAMMAM	WA	98074
45	3044		206TH	WAY	SAMMAM	WA	98074
46	3050		206TH	WAY	SAMMAM	WA	98074
47	3056		206TH	WAY	SAMMAM	WA	98074
48	3062		206TH	WAY	SAMMAM	WA	98074
49	3070		206TH	WAY	SAMMAM	WA	98074
50	20592	NE	31ST	ST	SAMMAM	WA	98074
51	20584	NE	31ST	ST	SAMMAM	WA	98074
52	20576	NE	31ST	ST	SAMMAM	WA	98074
53	20568	NE	31ST	ST	SAMMAM	WA	98074
54	20560	NE	31ST	ST	SAMMAM	WA	98074
55	20552	NE	31ST	ST	SAMMAM	WA	98074
56	20544	NE	31ST	ST	SAMMAM	WA	98074
57	20536	NE	31ST	ST	SAMMAM	WA	98074
58	20528	NE	31ST	ST	SAMMAM	WA	98074
59	20520	NE	31ST	ST	SAMMAM	WA	98074
60	20523	NE	31ST	ST	SAMMAM	WA	98074
61	20533	NE	31ST	ST	SAMMAM	WA	98074
62	20551	NE	31ST	ST	SAMMAM	WA	98074
63	20559	NE	31ST	ST	SAMMAM	WA	98074
64	20567	NE	31ST	ST	SAMMAM	WA	98074
65	20575	NE	31ST	ST	SAMMAM	WA	98074
66	20583	NE	31ST	ST	SAMMAM	WA	98074
67	20506	NE	31ST	ST	SAMMAM	WA	98074
68	20500	NE	31ST	ST	SAMMAM	WA	98074
69	20464	NE	31ST	ST	SAMMAM	WA	98074
70	20458	NE	31ST	ST	SAMMAM	WA	98074
71	20453	NE	31ST	ST	SAMMAM	WA	98074
72	20445	NE	31ST	ST	SAMMAM	WA	98074
73	20435	NE	31ST	ST	SAMMAM	WA	98074
74	20429	NE	31ST	ST	SAMMAM	WA	98074
75	20423	NE	31ST	ST	SAMMAM	WA	98074
76	20415	NE	31ST	ST	SAMMAM	WA	98074
77	20411	NE	31ST	ST	SAMMAM	WA	98074
78	20414	NE	31ST	ST	SAMMAM	WA	98074
79	20422	NE	31ST	ST	SAMMAM	WA	98074
80	20430	NE	31ST	ST	SAMMAM	WA	98074
81	3105		204TH	CT	SAMMAM	WA	98074
82	3113		204TH	CT	SAMMAM	WA	98074
83	3121		204TH	CT	SAMMAM	WA	98074
84	3128		204TH	CT	SAMMAM	WA	98074
85	3120		204TH	CT	SAMMAM	WA	98074
86	3112		204TH	CT	SAMMAM	WA	98074
87	3106		204TH	CT	SAMMAM	WA	98074
88	3057		205TH	CT	SAMMAM	WA	98074
89	3053		205TH	CT	SAMMAM	WA	98074
90	3049		205TH	CT	SAMMAM	WA	98074
91	3048		205TH	CT	SAMMAM	WA	98074
92	3054		205TH	CT	SAMMAM	WA	98074
93	3060		205TH	CT	SAMMAM	WA	98074
94	20648	NE	30TH	CT	SAMMAM	WA	98074
95	20640	NE	30TH	CT	SAMMAM	WA	98074
96	20632	NE	30TH	CT	SAMMAM	WA	98074
97	20624	NE	30TH	CT	SAMMAM	WA	98074
98	20616	NE	30TH	CT	SAMMAM	WA	98074
99	20641	NE	30TH	CT	SAMMAM	WA	98074
100	20649	NE	30TH	CT	SAMMAM	WA	98074
101	2939		204TH	LN	SAMMAM	WA	98074
102	2933		204TH	LN	SAMMAM	WA	98074
103	2927		204TH	LN	SAMMAM	WA	98074
104	2921		204TH	LN	SAMMAM	WA	98074
105	2915		204TH	LN	SAMMAM	WA	98074
106	2909		204TH	LN	SAMMAM	WA	98074
107	2903		204TH	LN	SAMMAM	WA	98074
108	2759		204TH	LN	SAMMAM	WA	98074
109	2753		204TH	LN	SAMMAM	WA	98074
110	2747		204TH	LN	SAMMAM	WA	98074

111	2741		204TH	LN	SAMMAM	WA	98074
112	2735		204TH	LN	SAMMAM	WA	98074
113	2729		204TH	LN	SAMMAM	WA	98074
114	2723		204TH	LN	SAMMAM	WA	98074
115	20511	NE	27TH	PL	SAMMAM	WA	98074
116	20519	NE	27TH	PL	SAMMAM	WA	98074
117	20529	NE	27TH	PL	SAMMAM	WA	98074
118	20537	NE	27TH	PL	SAMMAM	WA	98074
119	20547	NE	27TH	PL	SAMMAM	WA	98074
120	20555	NE	27TH	PL	SAMMAM	WA	98074
121	20548	NE	27TH	PL	SAMMAM	WA	98074
122	20536	NE	27TH	PL	SAMMAM	WA	98074
123	20528	NE	27TH	PL	SAMMAM	WA	98074
124	20520	NE	27TH	PL	SAMMAM	WA	98074
125	20512	NE	27TH	PL	SAMMAM	WA	98074
126	2722		206TH	TER	SAMMAM	WA	98074
127	2728		206TH	TER	SAMMAM	WA	98074
128	2734		206TH	TER	SAMMAM	WA	98074
129	2740		206TH	TER	SAMMAM	WA	98074
130	2746		206TH	TER	SAMMAM	WA	98074
131	2806		206TH	TER	SAMMAM	WA	98074
132	2812		206TH	TER	SAMMAM	WA	98074
133	2818		206TH	TER	SAMMAM	WA	98074
134	2824		206TH	TER	SAMMAM	WA	98074
135	2830		206TH	TER	SAMMAM	WA	98074
136	20556	NE	29TH	ST	SAMMAM	WA	98074
137	20548	NE	29TH	ST	SAMMAM	WA	98074
138	20549	NE	29TH	ST	SAMMAM	WA	98074
139	20541	NE	29TH	ST	SAMMAM	WA	98074
140	20533	NE	29TH	ST	SAMMAM	WA	98074
141	20527	NE	29TH	ST	SAMMAM	WA	98074
142	20614	NE	28TH	CT	SAMMAM	WA	98074
143	20622	NE	28TH	CT	SAMMAM	WA	98074
144	20630	NE	28TH	CT	SAMMAM	WA	98074
145	20638	NE	28TH	CT	SAMMAM	WA	98074
146	20646	NE	28TH	CT	SAMMAM	WA	98074
147	20645	NE	28TH	CT	SAMMAM	WA	98074
148	20639	NE	28TH	CT	SAMMAM	WA	98074
149	20631	NE	28TH	CT	SAMMAM	WA	98074
150	20623	NE	28TH	CT	SAMMAM	WA	98074
151	20615	NE	28TH	CT	SAMMAM	WA	98074
152	20508	NE	26TH	ST	SAMMAM	WA	98074
153	20518	NE	26TH	ST	SAMMAM	WA	98074
154	20526	NE	26TH	ST	SAMMAM	WA	98074
155	20534	NE	26TH	ST	SAMMAM	WA	98074
156	20542	NE	26TH	ST	SAMMAM	WA	98074
157	20543	NE	26TH	ST	SAMMAM	WA	98074
158	20535	NE	26TH	ST	SAMMAM	WA	98074
159	20525	NE	26TH	ST	SAMMAM	WA	98074
160	20517	NE	26TH	ST	SAMMAM	WA	98074
161	20509	NE	26TH	ST	SAMMAM	WA	98074
162	20612	NE	25TH	CT	SAMMAM	WA	98074
163	20620	NE	25TH	CT	SAMMAM	WA	98074
164	20628	NE	25TH	CT	SAMMAM	WA	98074
165	20636	NE	25TH	CT	SAMMAM	WA	98074
166	20644	NE	25TH	CT	SAMMAM	WA	98074
167	20643	NE	25TH	CT	SAMMAM	WA	98074
168	20635	NE	25TH	CT	SAMMAM	WA	98074
169	20627	NE	25TH	CT	SAMMAM	WA	98074
170	20619	NE	25TH	CT	SAMMAM	WA	98074
171	20611	NE	25TH	CT	SAMMAM	WA	98074
172	20502	NE	24TH	PL	SAMMAM	WA	98074
173	20510	NE	24TH	PL	SAMMAM	WA	98074
174	20516	NE	24TH	PL	SAMMAM	WA	98074
175	20524	NE	24TH	PL	SAMMAM	WA	98074
176	20530	NE	24TH	PL	SAMMAM	WA	98074
177	20519	NE	24TH	PL	SAMMAM	WA	98074
178	20525	NE	24TH	PL	SAMMAM	WA	98074
179	20521	NE	24TH	PL	SAMMAM	WA	98074
180	20515	NE	24TH	PL	SAMMAM	WA	98074
181	20507	NE	24TH	PL	SAMMAM	WA	98074
182	2436		206TH	PL	SAMMAM	WA	98074
183	2444		206TH	PL	SAMMAM	WA	98074
184	2450		206TH	PL	SAMMAM	WA	98074
185	2458		206TH	PL	SAMMAM	WA	98074
186	2502		206TH	PL	SAMMAM	WA	98074
187	2508		206TH	PL	SAMMAM	WA	98074
188	2514		206TH	PL	SAMMAM	WA	98074
189	2520		206TH	PL	SAMMAM	WA	98074
190	2526		206TH	PL	SAMMAM	WA	98074
191	2431		204th	TER	SAMMAM	WA	98074
192	2435		204TH	TER	SAMMAM	WA	98074
193	2439		204TH	TER	SAMMAM	WA	98074
194	2445		204TH	TER	SAMMAM	WA	98074
195	2451		204TH	TER	SAMMAM	WA	98074
196	2457		204TH	TER	SAMMAM	WA	98074
197	2501		204TH	TER	SAMMAM	WA	98074
198	2507		204TH	TER	SAMMAM	WA	98074
199	2513		204TH	TER	SAMMAM	WA	98074
200	2519		204TH	TER	SAMMAM	WA	98074
201	2525		204TH	TER	SAMMAM	WA	98074
202	2529		204TH	TER	SAMMAM	WA	98074









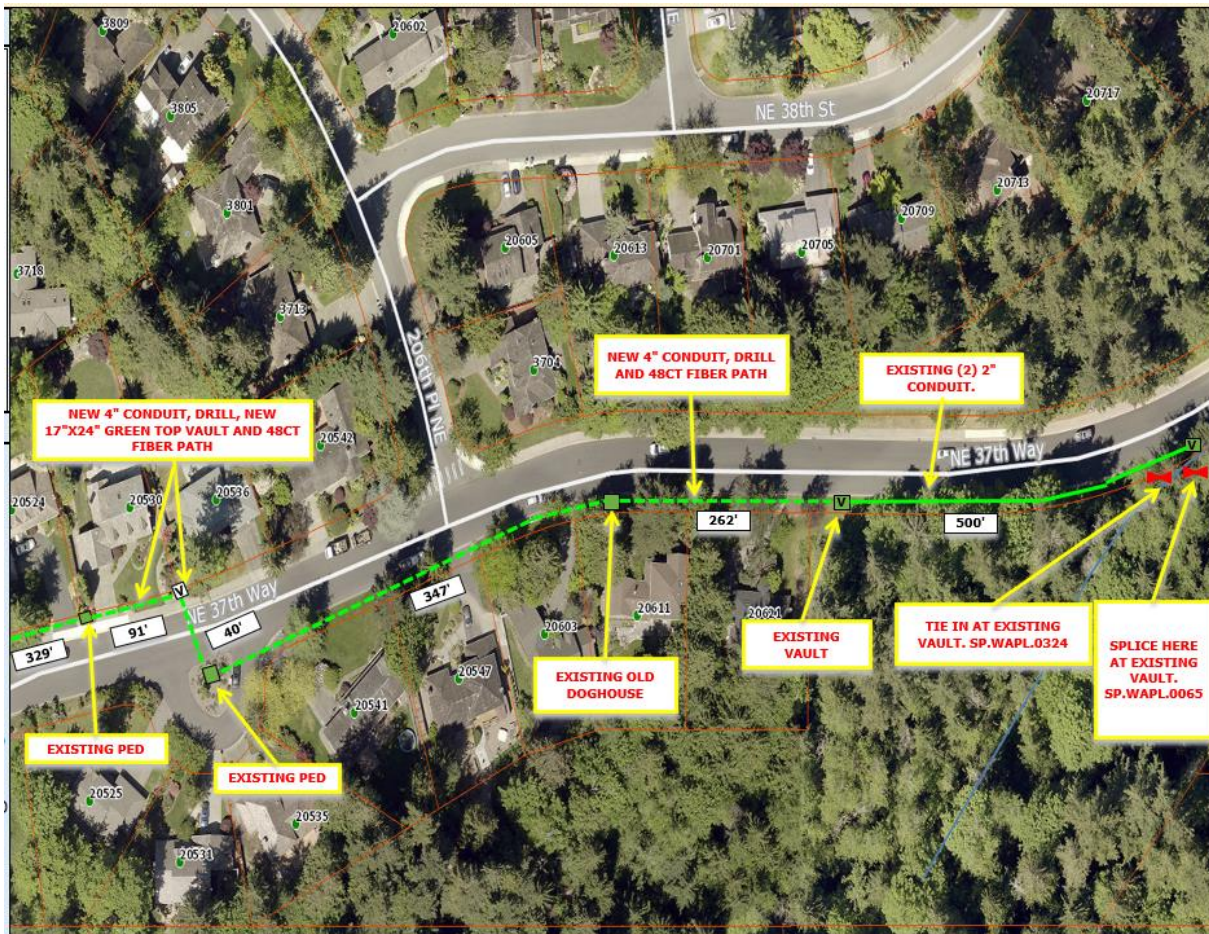
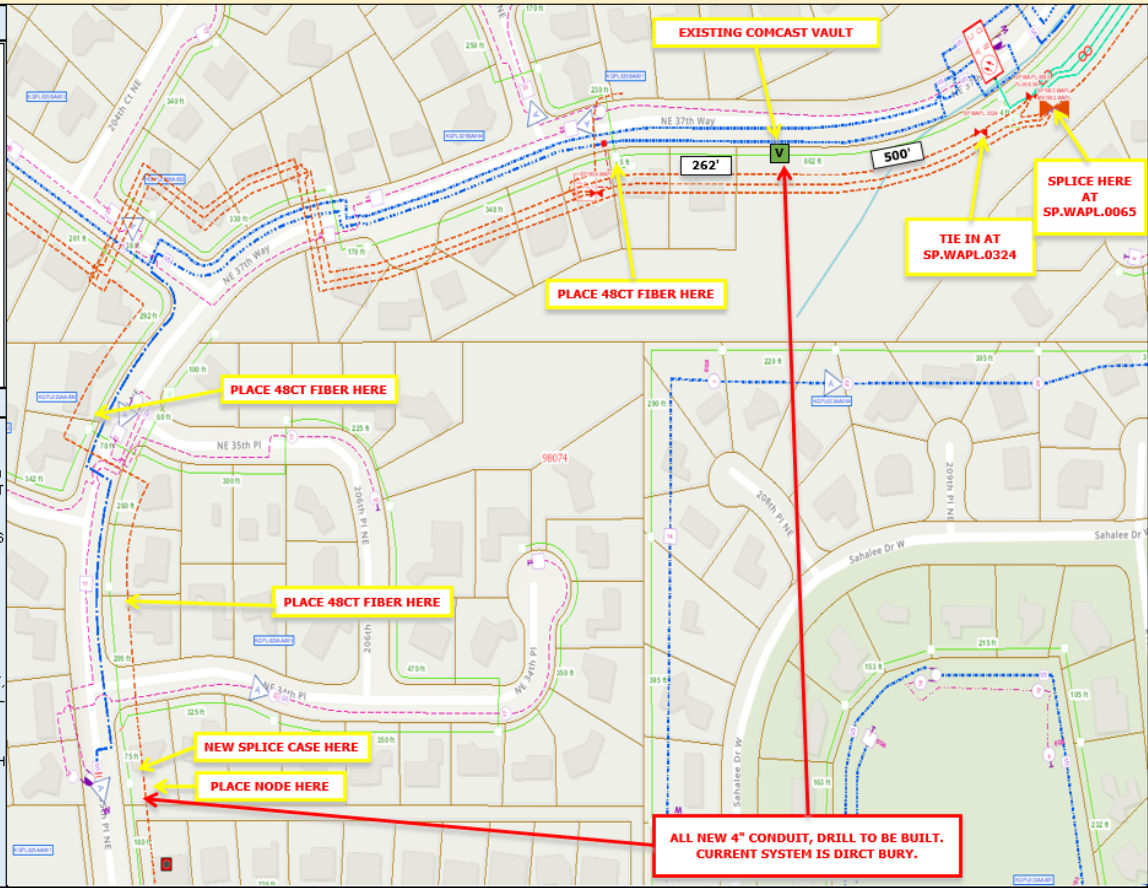


**Legend**

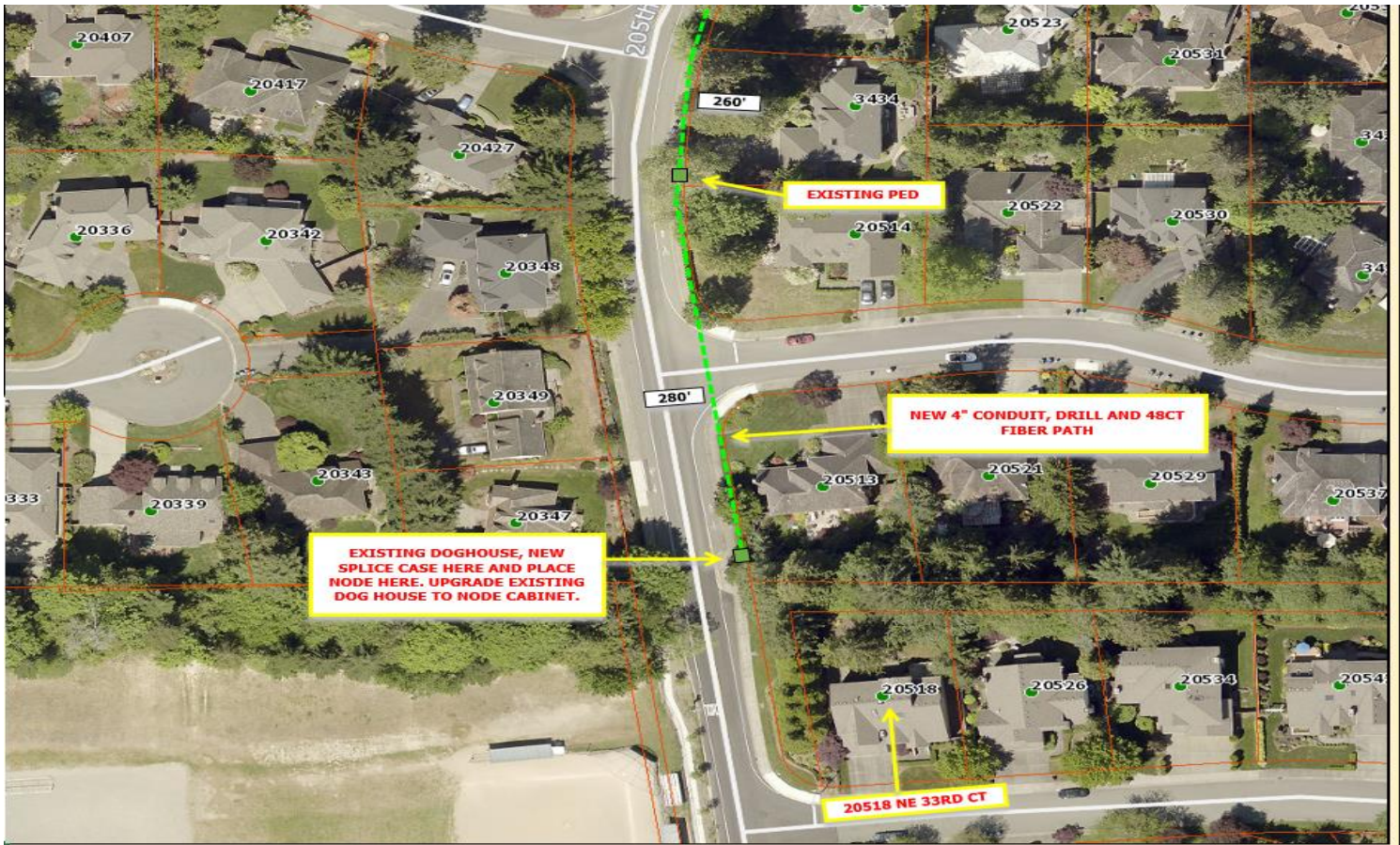
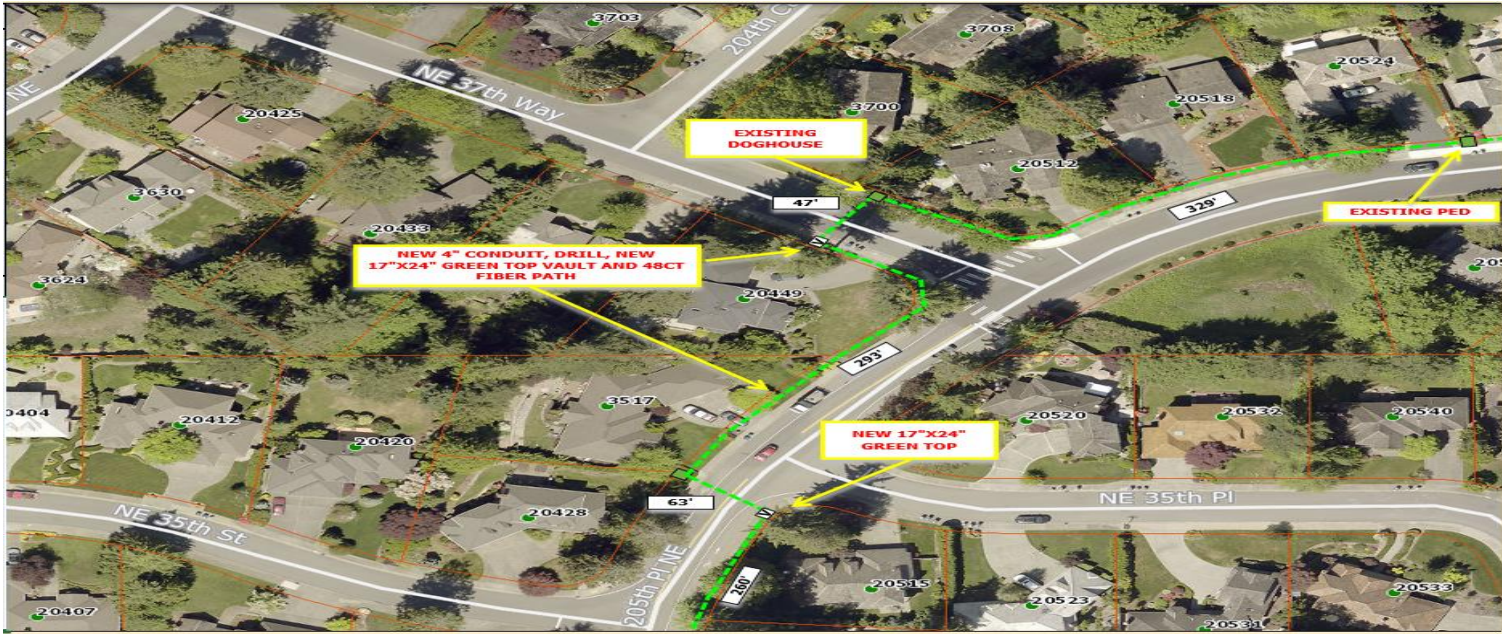
New Ped	□	Pole	⊗
New Vault	∇	Lock Box	■
Existing U/G	—	Footage	150'
Existing Aerial	—	Text Box	Text
New U/G	- - -	Callout Arrow	←
New Aerial	- - -	New Tap	▲
Interior Path	- - -	Phase Identifier	1
Footage Break	—	Power Supply	PS
Fiber Splice Point	⊕	Hard Surface Cut	⊙
Storage Loop	⊗	Abandoned Cable	—
Riser	⊕		

**Provide Clear Construction Details**

(S.D.U.) FROM EXISTING VAULT (NODE PL25 WAKGLO25) SPLICE AT SP.WAPL.0065 AND TIE IN TO SP.WAPL.0324 WITH NEW 48CT FIBER. PROOF AND PULL APPROXIMATELY 500' OF EXISTING (2) 2" CONDUIT TO EXISTING COMCAST VAULT. FROM EXISTING COMCAST VAULT DRILL AND PLACE NEW 4" CONDUIT & 48CT FIBER 262' TO EXISTING NODE CABINET AT 20611 NE 37TH WAY. FROM EXISTING NODE CABINET DRILL AND PLACE NEW 4" CONDUIT APPROXIMATELY 347' TO EXISTING PED AND UPGRADE OLD PED WITH NEW PED. CONTINUE NORTH APPROXIMATELY 40' ACROSS NE 37TH WAY AND PLACE (1) NEW 17"x24" GREEN TOP VAULT. CONTINUE WEST APPROXIMATELY 91' 4" CONDUIT, DRILL AND NEW 48CT FIBER TO EXISTING PED AT 20524 NE 37TH WAY UPGRADE OLD PED WITH NEW PED. CONTINUE WEST THEN NORTH ON NE 37TH WAY APPROXIMATELY 329' WITH NEW 4" CONDUIT, DRILL AND NEW 48CT FIBER TO EXISTING DOGHOUSE. CONTINUE WEST ACROSS NE 37TH WAY APPROXIMATELY 47' WITH NEW 4" CONDUIT, DRILL AND NEW 48CT FIBER AND PLACE (1) 17"x24" GREEN TOP VAULT. CONTINUE SOUTH ON NE 37TH WAY AND THEN WEST ON 205TH PL NE APPROXIMATELY 293' WITH NEW 4" CONDUIT, DRILL AND NEW 48CT FIBER TO EXISTING NODE CABINET AT 3517 205TH PL NE. CONTINUE SOUTH FROM EXISTING NODE CABINET APPROXIMATELY 63' WITH NEW 4" CONDUIT, NEW DRILL, NEW 48CT FIBER AND PLACE (1) NEW 17"x24" GREEN TOP VAULT. CONTINUE WEST ON 205TH PL NE WITH NEW 4" CONDUIT, DRILL, NEW 48CT FIBER APPROXIMATELY 280' TO EXISTING DOG HOUSE, UPGRADE EXISTING DOGHOUSE WITH NEW NODE CABINET, PLACE NEW PLICE CASE HERE AND PLACE NEW NODE HERE... END...







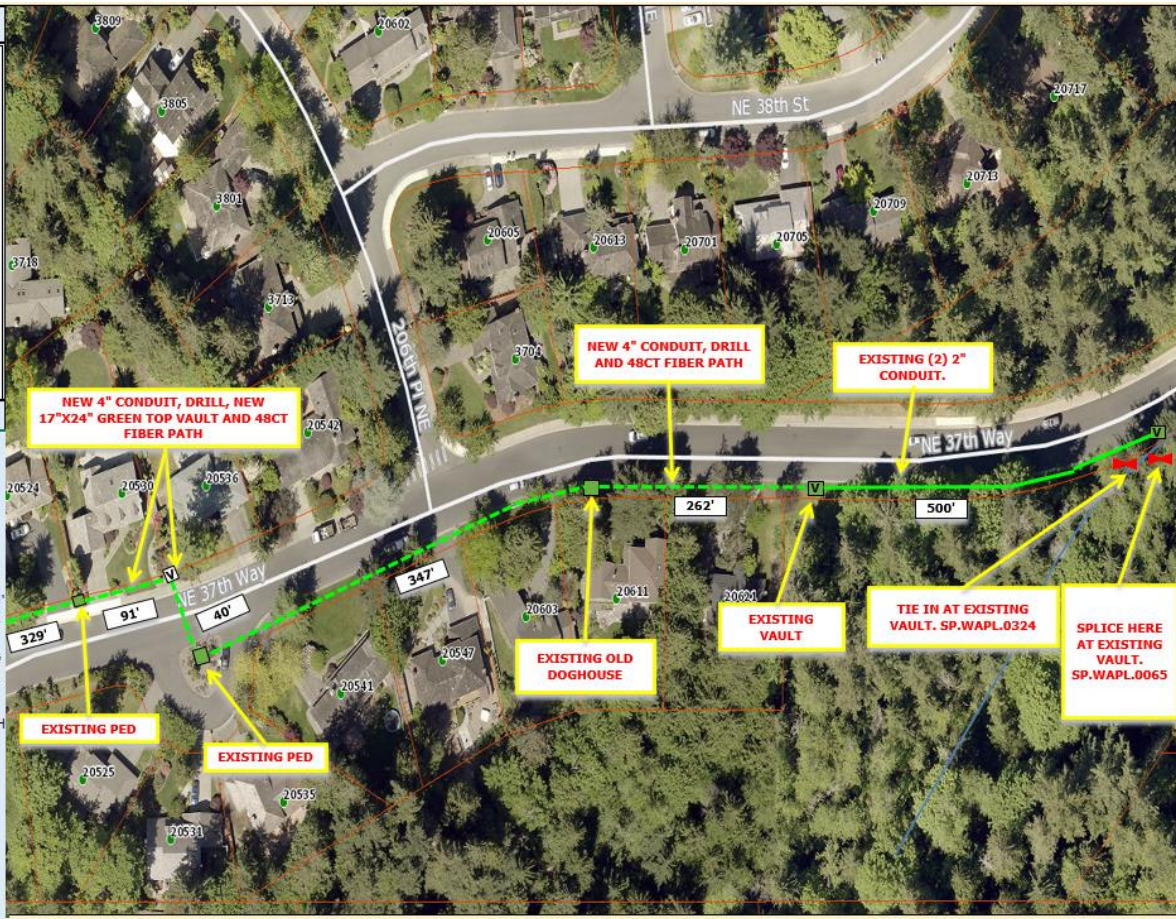


**Legend**

New Ped	□	Pole	⊗
New Vault	V	Lock Box	■
Existing U/G	—	Footage	150'
Existing Aerial	—	Text Box	Text
New U/G	- - -	Callout Arrow	←
New Aerial	- - -	New Tap	▲
Interior Path	- - -	Phase Identifier	I
Footage Break	—	Power Supply	PS
Fiber Splice Point	⊕	Hard Surface Cut	⊙
Storage Loop	⊗	Abandoned Cable	—
Riser	R		

**Provide Clear Construction Details**

(S.D.U.) FROM EXISTING VAULT (NODE PL25 WAKGPL025) SPLICE AT SP.WAPL.0065 AND TIE IN TO SP.WAPL.0324 WITH NEW 48CT FIBER. PROOF AND PULL APPROXIMATELY 500' OF EXISTING (2) 2" CONDUIT TO EXISTING COMCAST VAULT. FROM EXISTING COMCAST VAULT DRILL AND PLACE NEW 4" CONDUIT & 48CT FIBER 262' TO EXISTING NODE CABINET AT 20611 NE 37TH WAY. FROM EXISTING NODE CABINET DRILL AND PLACE NEW 4" CONDUIT APPROXIMATELY 347' TO EXISTING PED AND UPGRADE OLD PED WITH NEW PED. CONTINUE NORTH APPROXIMATELY 40' ACROSS NE 37TH WAY AND PLACE (1) NEW 17"x24" GREEN TOP VAULT. CONTINUE WEST APPROXIMATELY 91' 4" CONDUIT, DRILL AND NEW 48CT FIBER TO EXISTING PED AT 20524 NE 37TH WAY UPGRADE OLD PED WITH NEW PED. CONTINUE WEST THEN NORTH ON NE 37TH WAY APPROXIMATELY 329' WITH NEW 4" CONDUIT, DRILL AND NEW 48CT FIBER TO EXISTING DOGHOUSE. CONTINUE WEST ACROSS NE 37TH WAY APPROXIMATELY 47' WITH NEW 4" CONDUIT, DRILL AND NEW 48CT FIBER AND PLACE (1) 17"x24" GREEN TOP VAULT. CONTINUE SOUTH ON NE 37TH WAY AND THEN WEST ON 205TH PL NE APPROXIMATELY 293' WITH NEW 4" CONDUIT, DRILL AND NEW 48CT FIBER TO EXISTING NODE CABINET AT 3517 205TH PL NE. CONTINUE SOUTH FROM EXISTING NODE CABINET APPROXIMATELY 63' WITH NEW 4" CONDUIT, NEW DRILL, NEW 48CT FIBER AND PLACE (1) NEW 17"x24" GREEN TOP VAULT. CONTINUE WEST ON 205TH PL NE WITH NEW 4" CONDUIT, DRILL, NEW 48CT FIBER TO EXISTING PED AT 3434 205TH PL NE AND UPGRADE EXISTING PED WITH NEW PED. CONTINUE WITH 4" CONDUIT, DRILL, AND NEW 48CT FIBER APPROXIMATELY 280' TO EXISTING DOG HOUSE, UPGRADE EXISTING DOGHOUSE WITH NEW NODE CABINET, PLACE NEW PLICE CASE HERE AND PLACE NEW NODE HERE... END...

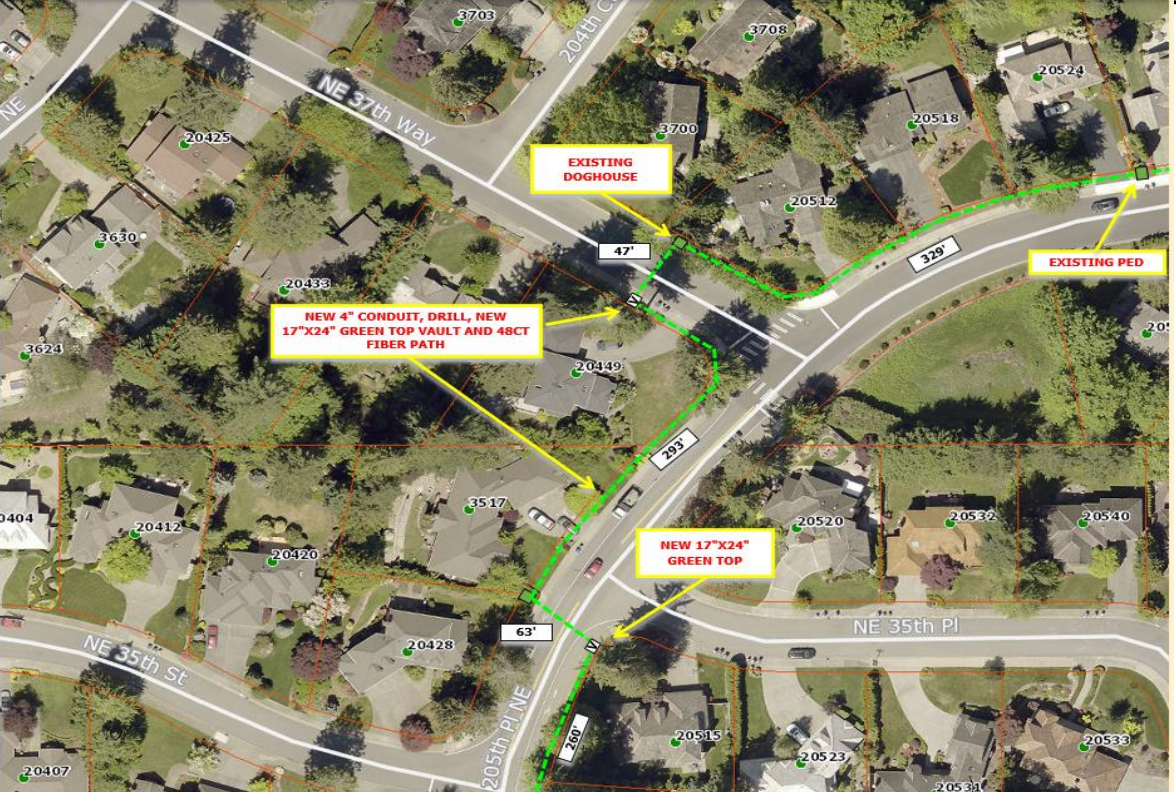


**Legend**

New Ped	□	Pole	⊗
New Vault	V	Lock Box	■
Existing U/G	—	Footage	150'
Existing Aerial	—	Text Box	Text
New U/G	- - -	Callout Arrow	←
New Aerial	- - -	New Tap	▲
Interior Path	- - -	Phase Identifier	I
Footage Break	—	Power Supply	PS
Fiber Splice Point	⊕	Hard Surface Cut	⊙
Storage Loop	⊗	Abandoned Cable	—
Riser	R		

**Provide Clear Construction Details**

(S.D.U.) FROM EXISTING VAULT (NODE PL25 WAKGPL025) SPLICE AT SP.WAPL.0065 AND TIE IN TO SP.WAPL.0324 WITH NEW 48CT FIBER. PROOF AND PULL APPROXIMATELY 500' OF EXISTING (2) 2" CONDUIT TO EXISTING COMCAST VAULT. FROM EXISTING COMCAST VAULT DRILL AND PLACE NEW 4" CONDUIT & 48CT FIBER 262' TO EXISTING NODE CABINET AT 20611 NE 37TH WAY. FROM EXISTING NODE CABINET DRILL AND PLACE NEW 4" CONDUIT APPROXIMATELY 347' TO EXISTING PED AND UPGRADE OLD PED WITH NEW PED. CONTINUE NORTH APPROXIMATELY 40' ACROSS NE 37TH WAY AND PLACE (1) NEW 17"x24" GREEN TOP VAULT. CONTINUE WEST APPROXIMATELY 91' 4" CONDUIT, DRILL AND NEW 48CT FIBER TO EXISTING PED AT 20524 NE 37TH WAY UPGRADE OLD PED WITH NEW PED. CONTINUE WEST THEN NORTH ON NE 37TH WAY APPROXIMATELY 329' WITH NEW 4" CONDUIT, DRILL AND NEW 48CT FIBER TO EXISTING DOGHOUSE. CONTINUE WEST ACROSS NE 37TH WAY APPROXIMATELY 47' WITH NEW 4" CONDUIT, DRILL AND NEW 48CT FIBER AND PLACE (1) 17"x24" GREEN TOP VAULT. CONTINUE SOUTH ON NE 37TH WAY AND THEN WEST ON 205TH PL NE APPROXIMATELY 293' WITH NEW 4" CONDUIT, DRILL AND NEW 48CT FIBER TO EXISTING NODE CABINET AT 3517 205TH PL NE. CONTINUE SOUTH FROM EXISTING NODE CABINET APPROXIMATELY 63' WITH NEW 4" CONDUIT, NEW DRILL, NEW 48CT FIBER AND PLACE (1) NEW 17"x24" GREEN TOP VAULT. CONTINUE WEST ON 205TH PL NE WITH NEW 4" CONDUIT, DRILL, NEW 48CT FIBER TO EXISTING PED AT 3434 205TH PL NE AND UPGRADE EXISTING PED WITH NEW PED. CONTINUE WITH 4" CONDUIT, DRILL, AND NEW 48CT FIBER APPROXIMATELY 280' TO EXISTING DOG HOUSE, UPGRADE EXISTING DOGHOUSE WITH NEW NODE CABINET, PLACE NEW PLICE CASE HERE AND PLACE NEW NODE HERE... END...

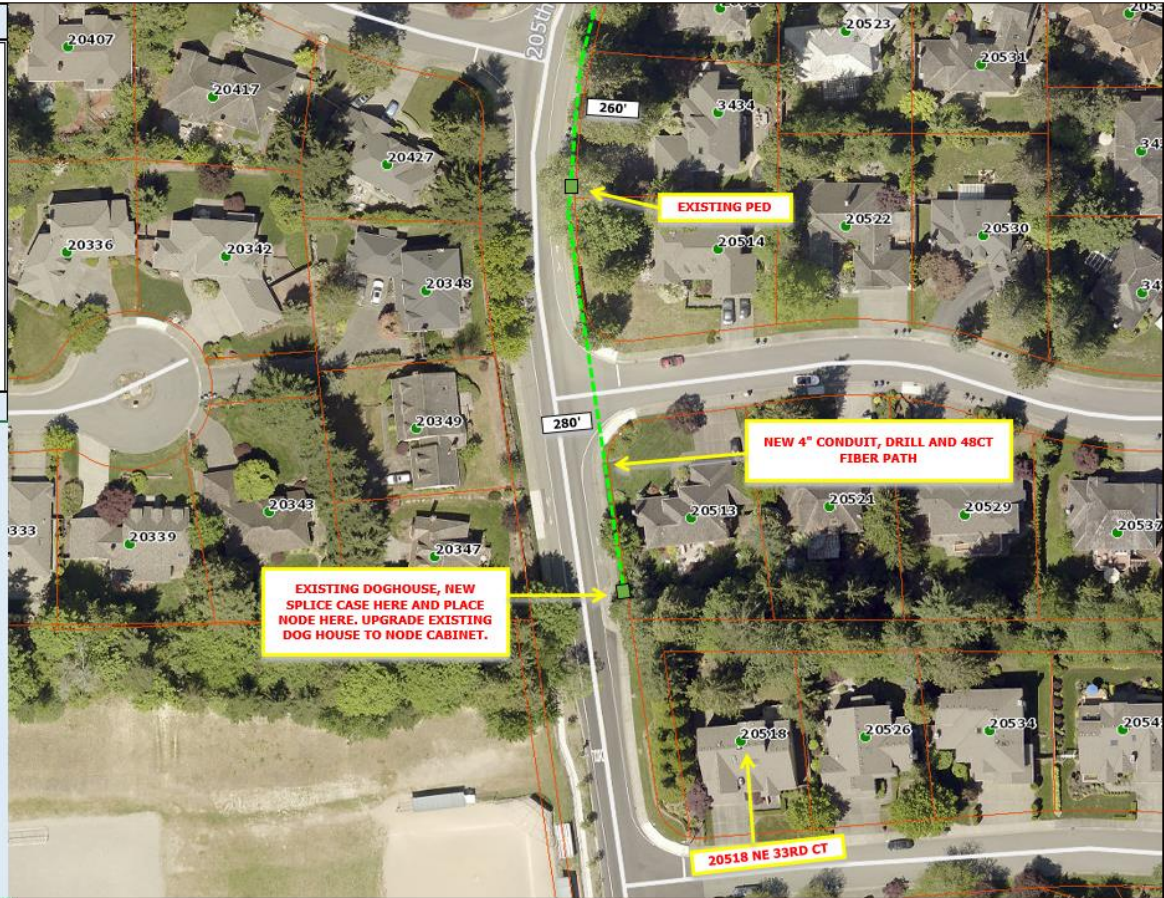




**Legend**

New Ped		Pole	
New Vault		Lock Box	
Existing U/G		Footage	
Existing Aerial		Text Box	
New U/G		Callout Arrow	
New Aerial		New Tap	
Interior Path		Phase Identifier	
Footage Break		Power Supply	
Fiber Splice Point		Hard Surface Cut	
Storage Loop		Abandoned Cable	
Riser			

Provide Clear Construction Details



**Legend**

New Ped		Pole	
New Vault		Lock Box	
Existing U/G		Footage	
Existing Aerial		Text Box	
New U/G		Callout Arrow	
New Aerial		New Tap	
Interior Path		Phase Identifier	
Footage Break		Power Supply	
Fiber Splice Point		Hard Surface Cut	
Storage Loop		Abandoned Cable	
Riser			

Provide Clear Construction Details

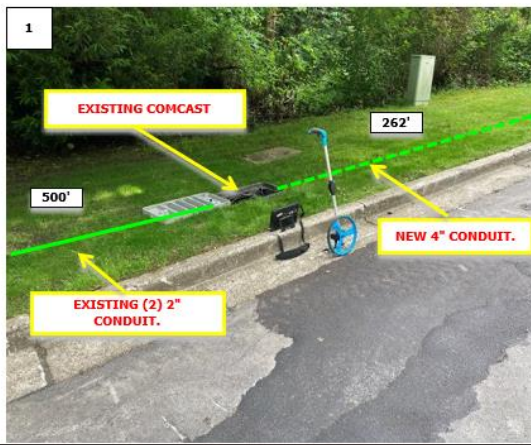
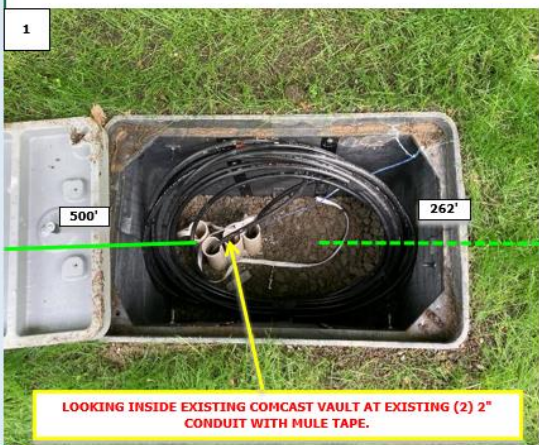
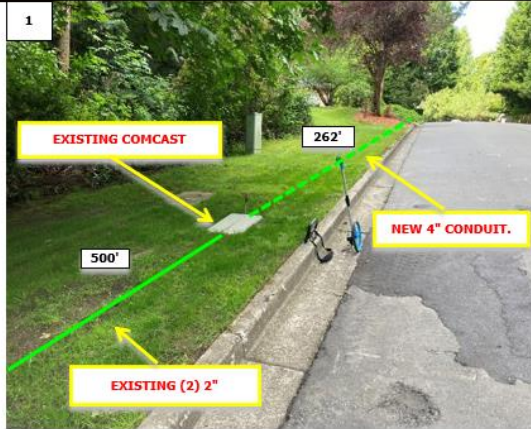




**Legend**

New Ped	□	Pole	⊗
New Vault	Ⓥ	Lock Box	■
Existing U/G	—	Footage	150'
Existing Aerial	—	Text Box	Text
New U/G	- - -	Callout Arrow	←
New Aerial	- - -	New Tap	▲
Interior Path	- - -	Phase Identifier	I
Footage Break	—	Power Supply	PS
Fiber Splice Point	⋈	Hard Surface Cut	C
Storage Loop	⊖	Abandoned Cable	—
Riser	Ⓡ		

Provide Clear Construction Details



**Legend**

New Ped	□	Pole	⊗
New Vault	Ⓥ	Lock Box	■
Existing U/G	—	Footage	150'
Existing Aerial	—	Text Box	Text
New U/G	- - -	Callout Arrow	←
New Aerial	- - -	New Tap	▲
Interior Path	- - -	Phase Identifier	I
Footage Break	—	Power Supply	PS
Fiber Splice Point	⋈	Hard Surface Cut	C
Storage Loop	⊖	Abandoned Cable	—
Riser	Ⓡ		

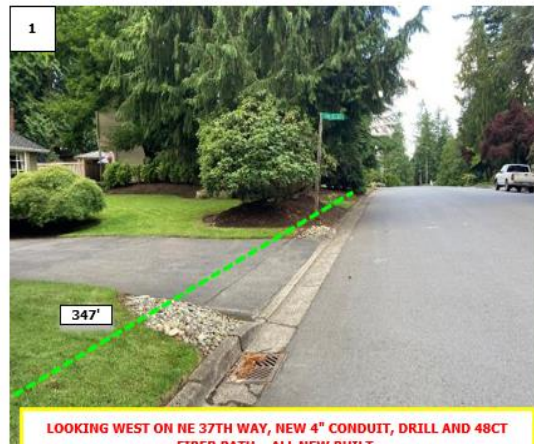
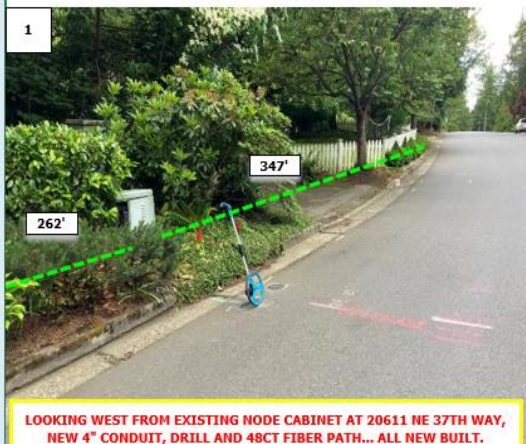
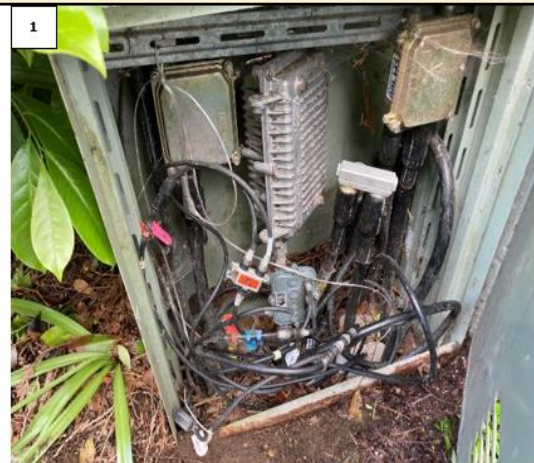
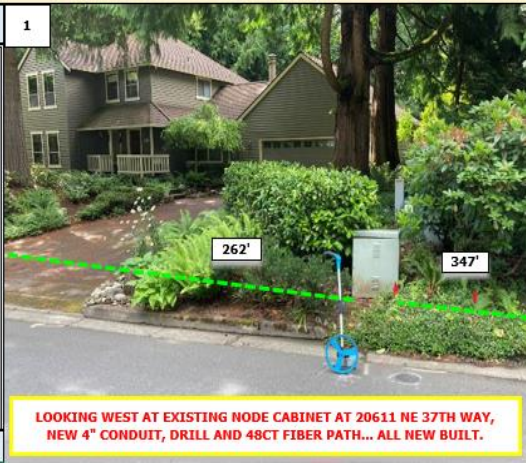
Provide Clear Construction Details





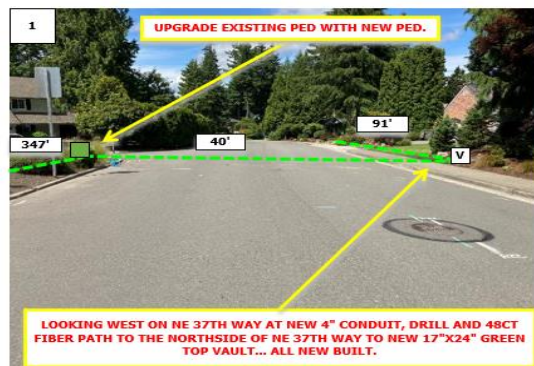
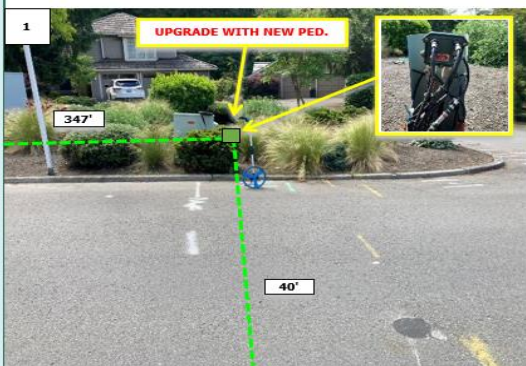
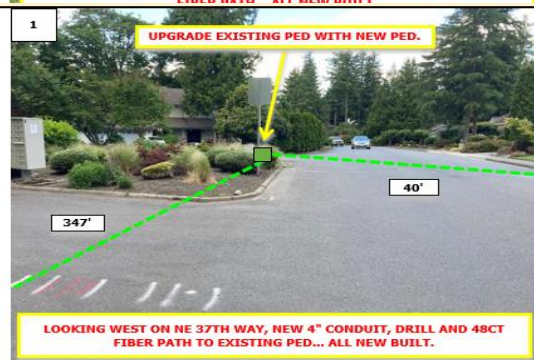
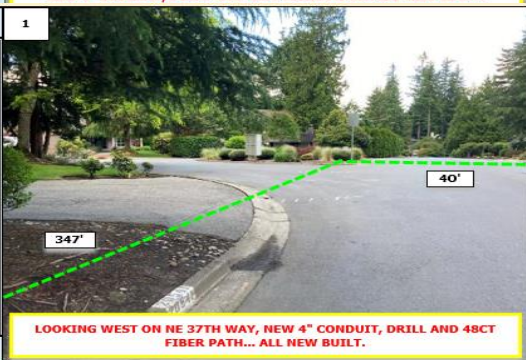
Legend			
New Ped		Pole	
New Vault		Lock Box	
Existing U/G		Footage	
Existing Aerial		Text Box	
New U/G		Callout Arrow	
New Aerial		New Tap	
Interior Path		Phase Identifier	
Footage Break		Power Supply	
Fiber Splice Point		Hard Surface Cut	
Storage Loop		Abandoned Cable	
Riser			

Provide Clear Construction Details



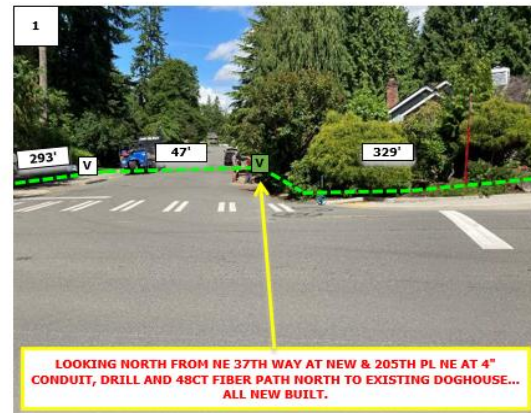
Legend			
New Ped		Pole	
New Vault		Lock Box	
Existing U/G		Footage	
Existing Aerial		Text Box	
New U/G		Callout Arrow	
New Aerial		New Tap	
Interior Path		Phase Identifier	
Footage Break		Power Supply	
Fiber Splice Point		Hard Surface Cut	
Storage Loop		Abandoned Cable	
Riser			

Provide Clear Construction Details

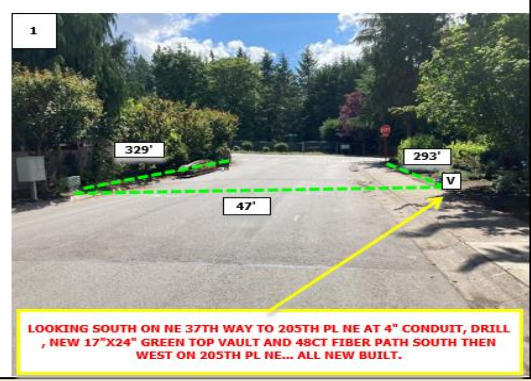
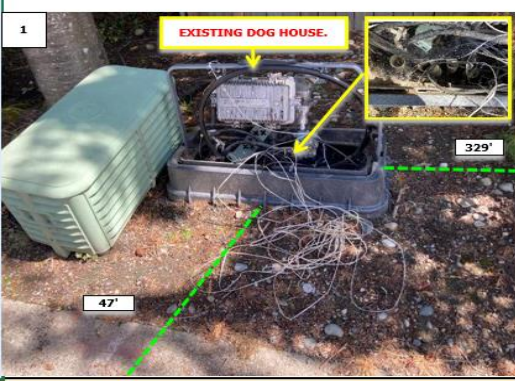




Legend			
New Ped	□	Pole	⊗
New Vault	Ⓥ	Lock Box	■
Existing U/G	—	Footage	150'
Existing Aerial	—	Text Box	Text
New U/G	- - -	Callout Arrow	←
New Aerial	- - -	New Tap	▲
Interior Path	- - -	Phase Identifier	1
Footage Break	—	Power Supply	PS
Fiber Splice Point	⋈	Hard Surface Cut	⊖
Storage Loop	⊖	Abandoned Cable	⌞
Riser	Ⓡ		



Legend			
New Ped	□	Pole	⊗
New Vault	Ⓥ	Lock Box	■
Existing U/G	—	Footage	150'
Existing Aerial	—	Text Box	Text
New U/G	- - -	Callout Arrow	←
New Aerial	- - -	New Tap	▲
Interior Path	- - -	Phase Identifier	1
Footage Break	—	Power Supply	PS
Fiber Splice Point	⋈	Hard Surface Cut	⊖
Storage Loop	⊖	Abandoned Cable	⌞
Riser	Ⓡ		

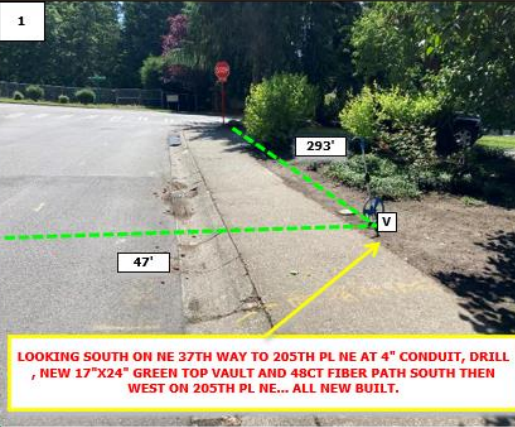




**Legend**

New Ped	□	Pole	⊗
New Vault	V	Lock Box	■
Existing U/G	—	Footage	150'
Existing Aerial	—	Text Box	Text
New U/G	- - -	Callout Arrow	←
New Aerial	- - -	New Tap	▲
Interior Path	- - -	Phase Identifier	1
Footage Break	—	Power Supply	PS
Fiber Splice Point	⋈	Hard Surface Cut	⊙
Storage Loop	⊗	Abandoned Cable	⌋
Riser	R		

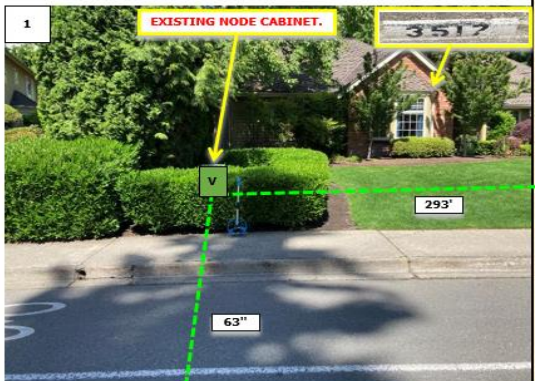
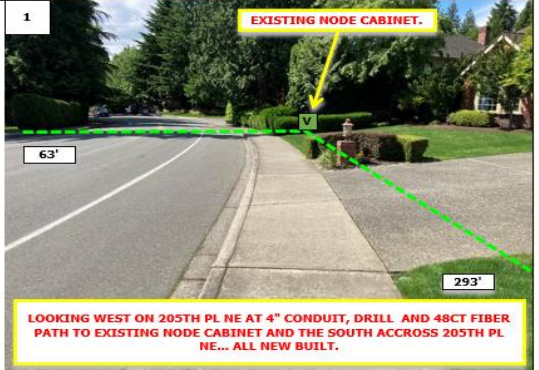
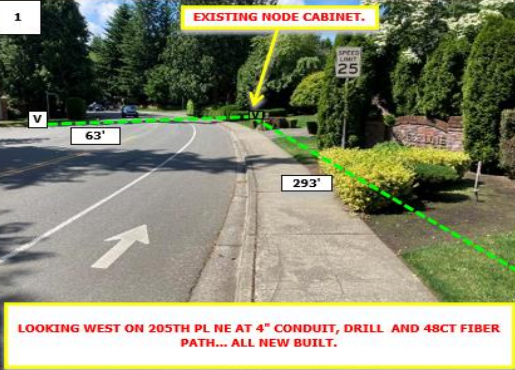
Provide Clear Construction Details



**Legend**

New Ped	□	Pole	⊗
New Vault	V	Lock Box	■
Existing U/G	—	Footage	150'
Existing Aerial	—	Text Box	Text
New U/G	- - -	Callout Arrow	←
New Aerial	- - -	New Tap	▲
Interior Path	- - -	Phase Identifier	1
Footage Break	—	Power Supply	PS
Fiber Splice Point	⋈	Hard Surface Cut	⊙
Storage Loop	⊗	Abandoned Cable	⌋
Riser	R		

Provide Clear Construction Details

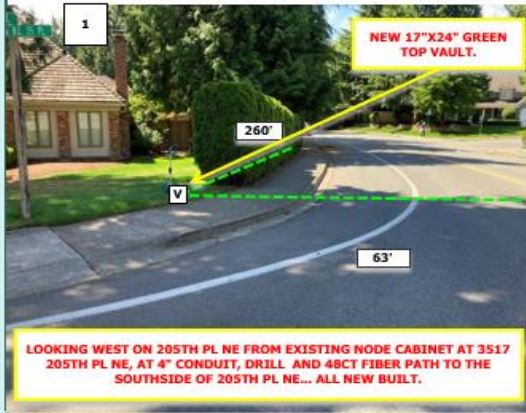




**Legend**

New Ped		Pole	
New Vault		Lock Box	
Existing U/G		Footage	
Existing Aerial		Text Box	
New U/G		Callout Arrow	
New Aerial		New Tap	
Interior Path		Phase Identifier	
Footage Break		Power Supply	
Fiber Splice Point		Hard Surface Cut	
Storage Loop		Abandoned Cable	
Riser			

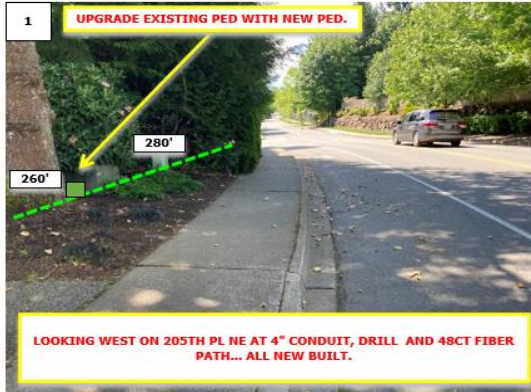
Provide Clear Construction Details



**Legend**

New Ped		Pole	
New Vault		Lock Box	
Existing U/G		Footage	
Existing Aerial		Text Box	
New U/G		Callout Arrow	
New Aerial		New Tap	
Interior Path		Phase Identifier	
Footage Break		Power Supply	
Fiber Splice Point		Hard Surface Cut	
Storage Loop		Abandoned Cable	
Riser			

Provide Clear Construction Details





**Legend**

New Ped		Pole	
New Vault		Lock Box	
Existing U/G		Footage	
Existing Aerial		Text Box	
New U/G		Callout Arrow	
New Aerial		New Tap	
Interior Path		Phase Identifier	
Footage Break		Power Supply	
Fiber Splice Point		Hard Surface Cut	
Storage Loop		Abandoned Cable	
Riser			

Provide Clear Construction Details



