

Dehumidifier Consorb
DC-50R



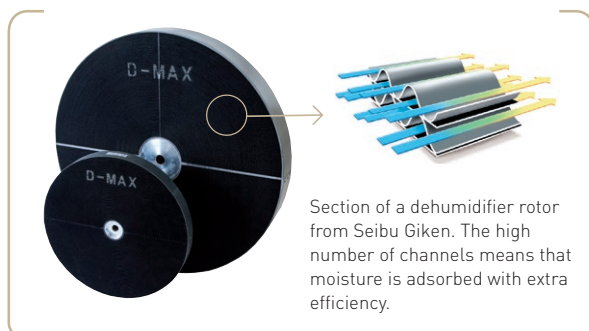
Dehumidifying capacity at 20°C / 60%RH

3 kg/h

Dry air flow

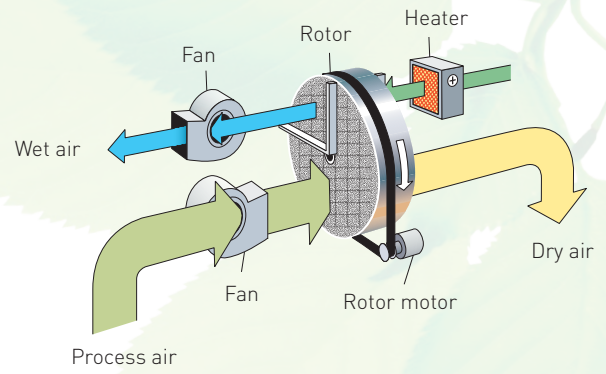
550 m³/h

- ↘ Washable rotor
- ↘ No desiccant carry-over
- ↘ Stainless steel chassis
- ↘ Easy to maintain
- ↘ Long lifetime



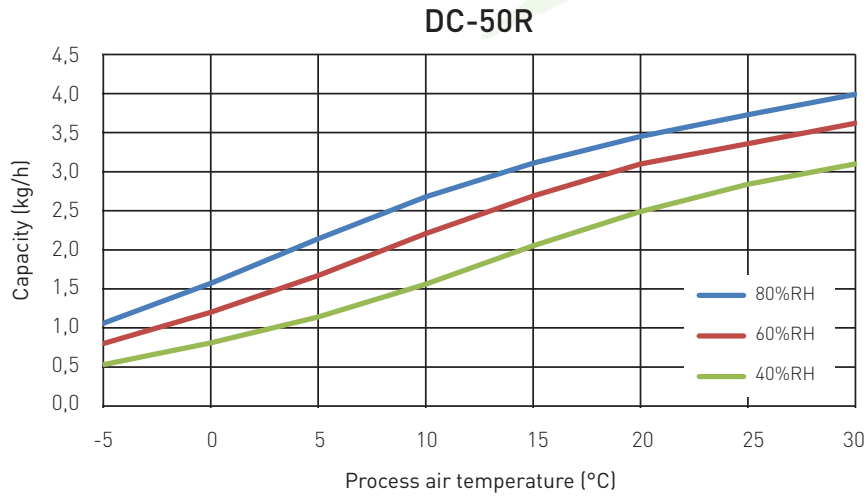
TECHNICAL DATA

Dehumidifier model	DC -50R
Nominal capacity ¹ (kg/h)	3,0
Dry air flow ² (m ³ /h)	550
Static pressure at disposal (PA)	150
Wet air flow ² (m ³ /h)	150
Static pressure at disposal (PA)	100
Heater power (kW)	5,0
Total power (kW)	5,5
Supply fuse 3 x 400 V / 50Hz, (A)	16
Weight (kg)	63

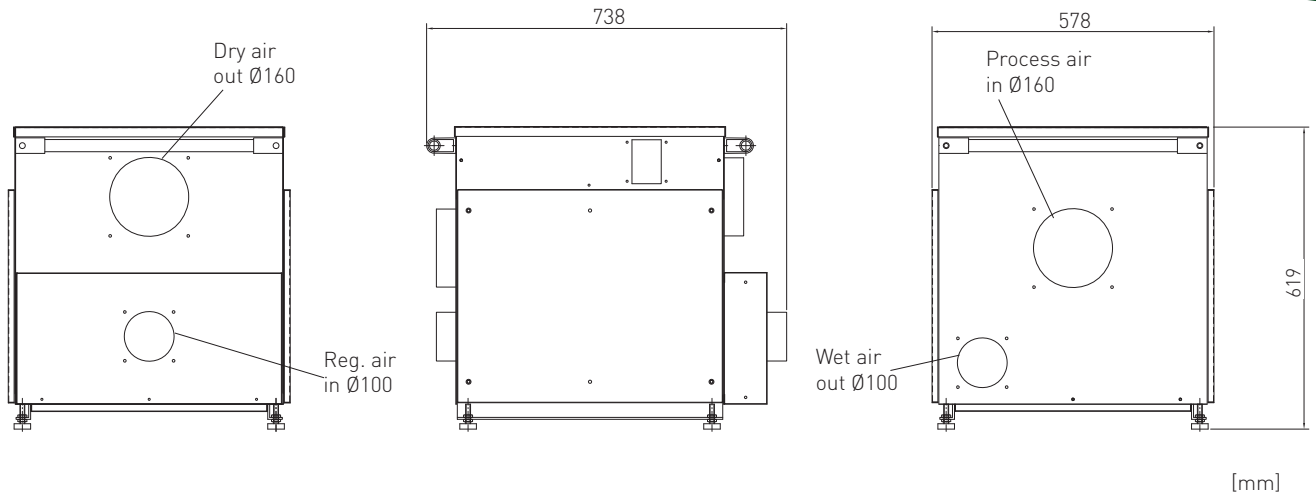


¹ Valid for inlet conditions 20°C/60%RH. For other inlet conditions the capacity can be calculated by using the correction factor from the diagram shown below.
² Volume flow for density 1,20 kg/m³.

CORRECTION DIAGRAM



DIMENSIONS



Subject to change without notice. Download installation drawing at www.dst-sg.com.

Seibu Giken DST AB
 Avestagatan 33 | 163 53 Spånga, Sweden
 Tel +46 8 445 77 20 | Fax +46 8 445 77 39
www.dst-sg.com | info@dst-sg.com

CONTACT US

(+52) 55 4324 7603 / 777 380 2414 / 777 420 2408

Rio Mayo 1477, Int. 11
 Cuernavaca, Morelos 62290 - Mexico