



Corey Johnson

CEO – NEIGHBR

Building for Equity, Impact & Community

INTRODUCTION

As CEO of NEIGHBR and its subsidiaries, I've designed and led projects that transform communities through the development of social infrastructure and sustainable investments in emerging companies. My approach blends bold design, grassroots engagement, and visionary thinking to ensure every project serves both people and the planet.

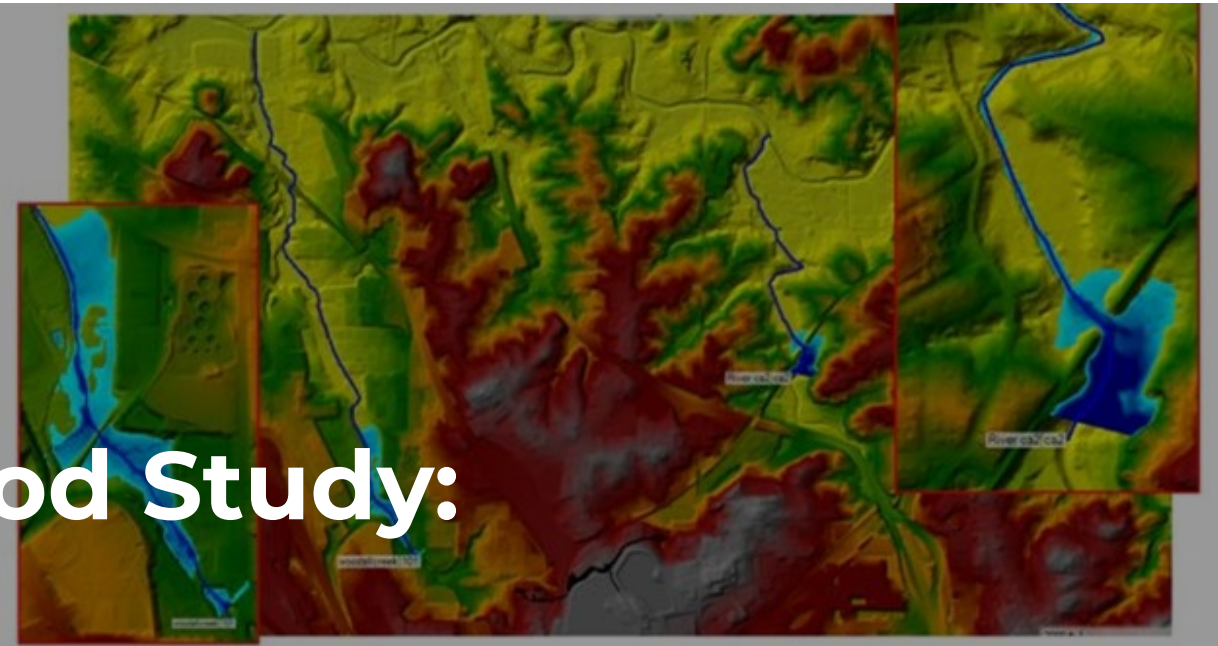
Originally from Atlanta, I earned my Civil Engineering degree from Georgia Tech, and my engineering career has spanned both the public and private sectors. Today, I apply that expertise to advance NEIGHBR's mission of creating space to improve the human experience at scale.

SIGNATURE PROJECTS

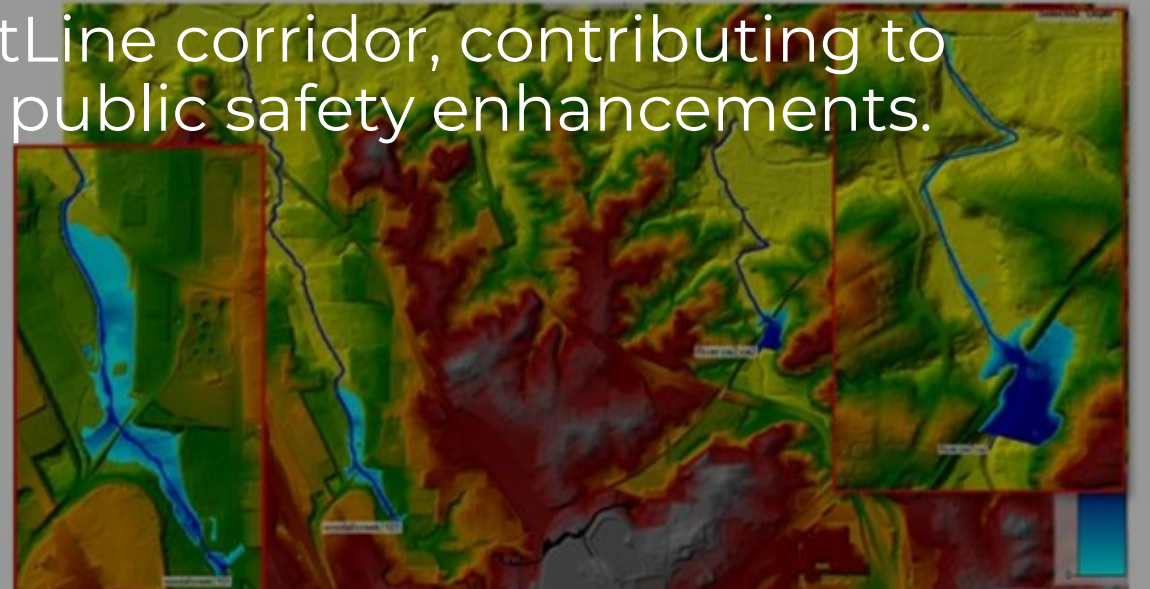
- Atlanta BeltLine – Flood Study
- Hartsfield-Jackson EV Charging Stations – Design
- Ben Hill United Methodist Church – Stormwater Mitigation Analysis
- Rear Guest Houses – Site Design & Zoning
- College Park CME Church – Flood Study
- Atl Kula Wellness Studio – Architectural/Engineering Co-Design
- Kula Care Foundation Nature Trail – Design & Development

Atlanta BeltLine – Flood Study:

Conducted hydrologic and hydraulic assessment to inform stormwater planning along the BeltLine corridor, contributing to green infrastructure strategies and public safety enhancements.

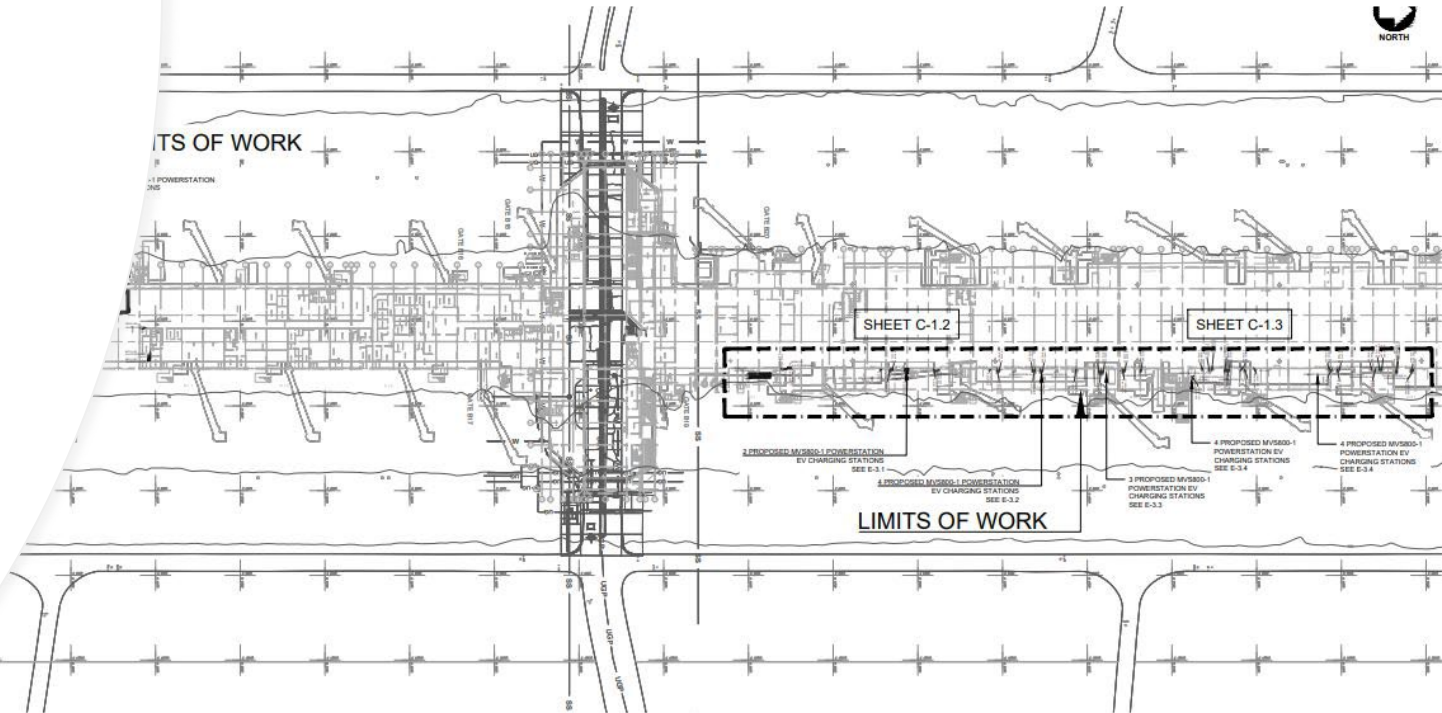


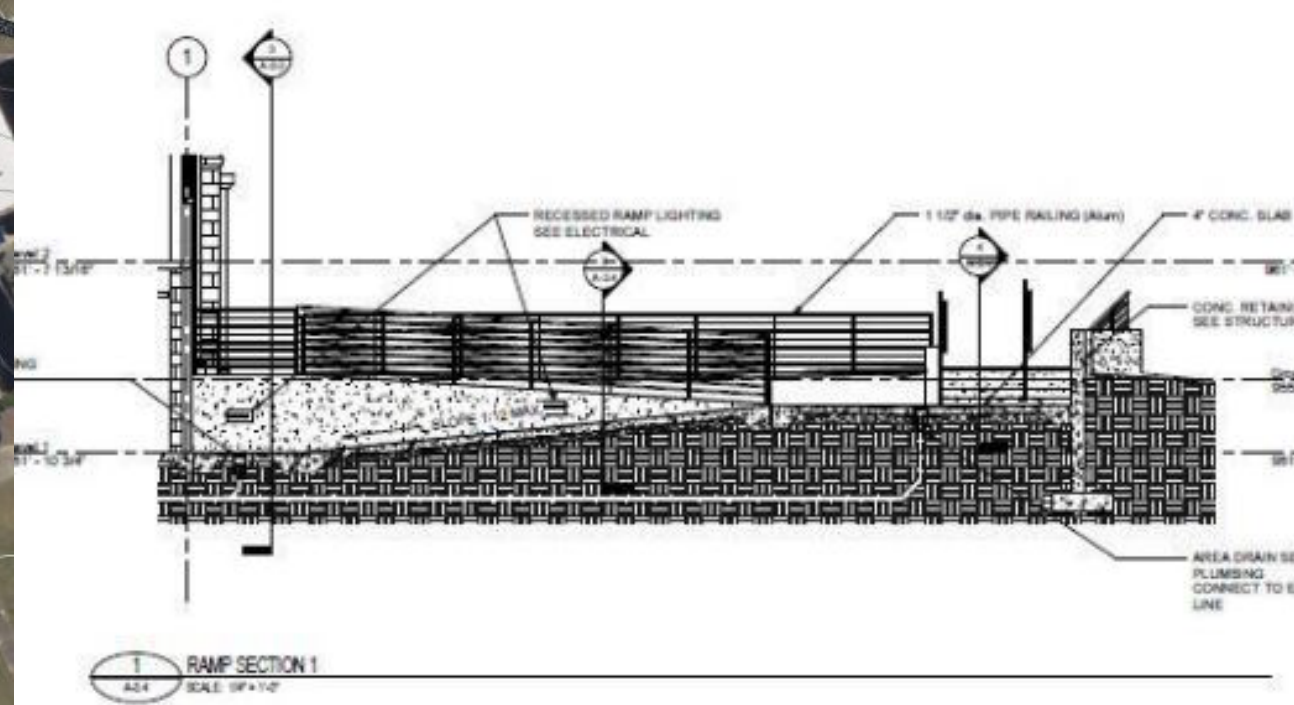
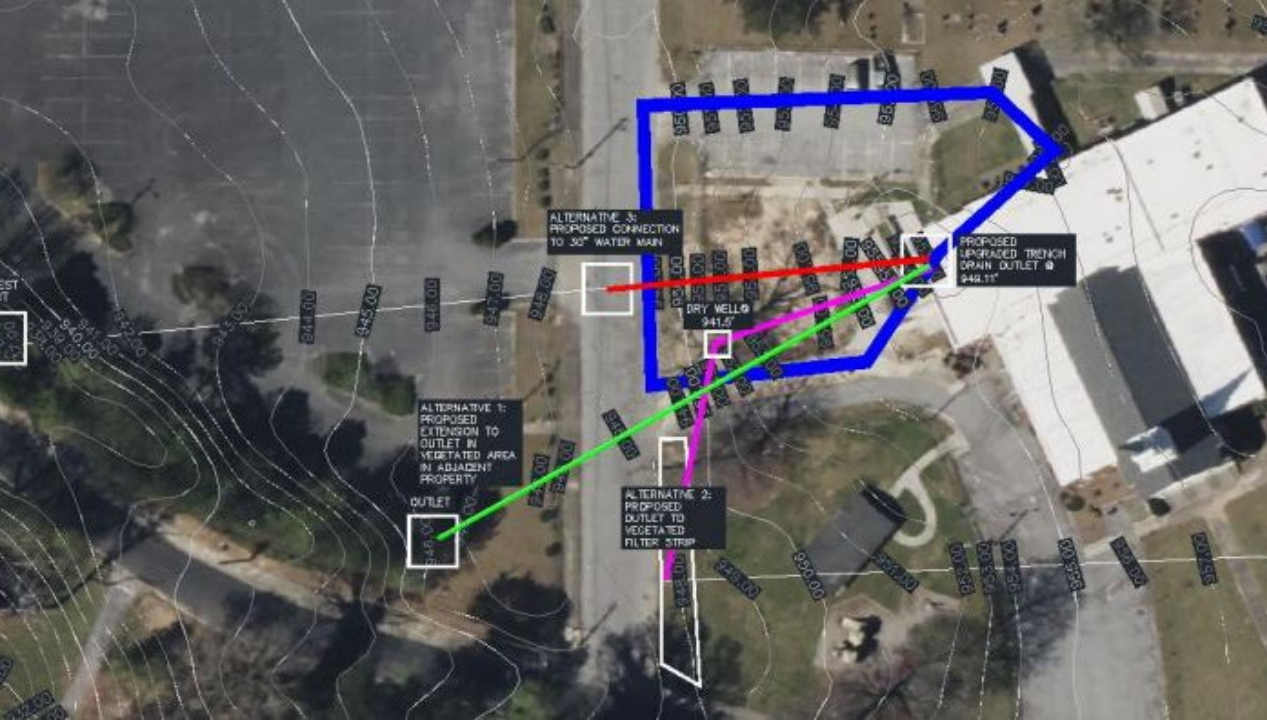
2D Flood Modeling 100-Year Return Period – Existing



Hartsfield-Jackson EV Charging Stations – Design:

Designed site layouts for electric vehicle charging stations at one of the world's busiest airports, aligning with Atlanta's sustainability goals and transportation innovation.



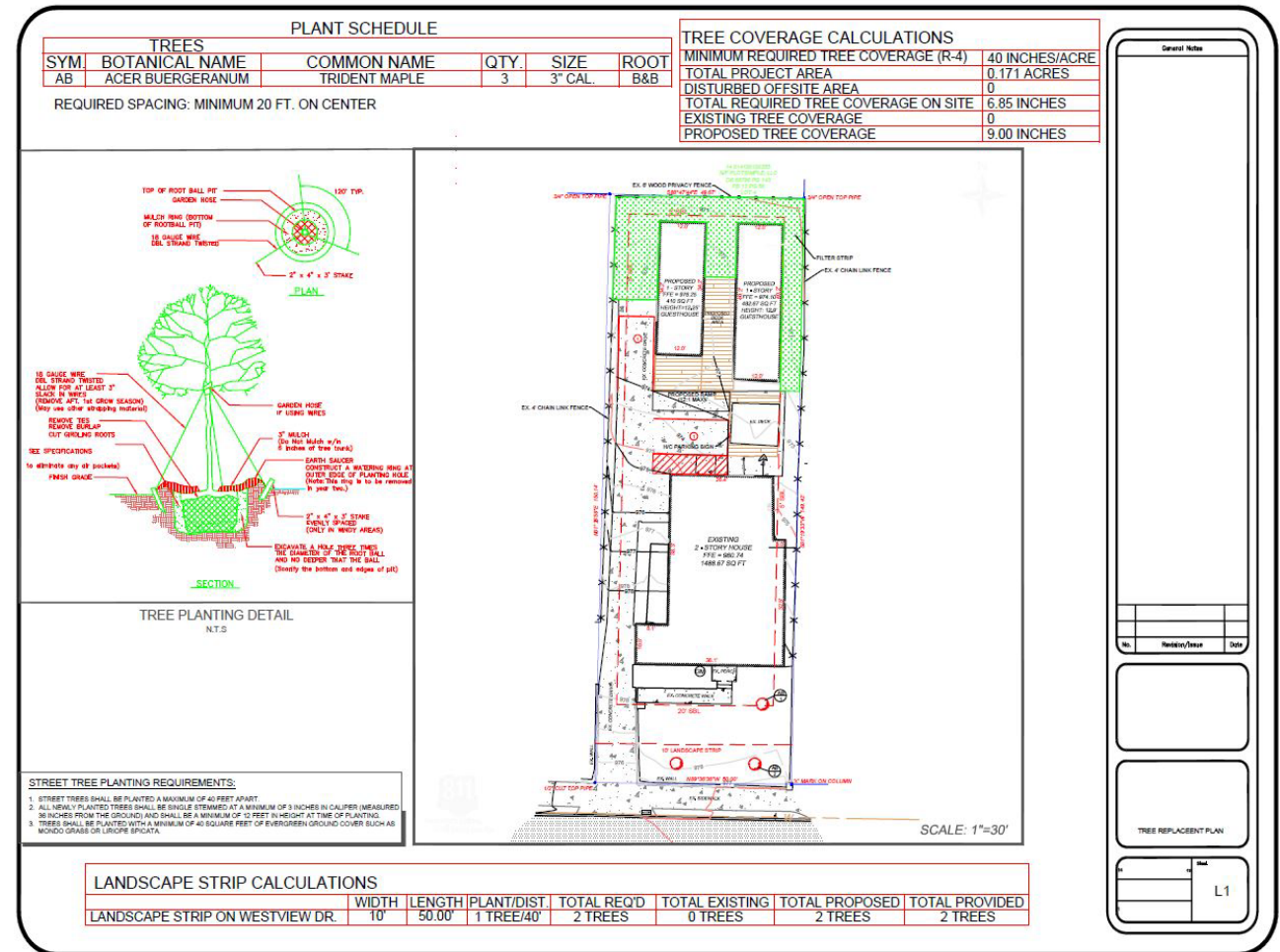


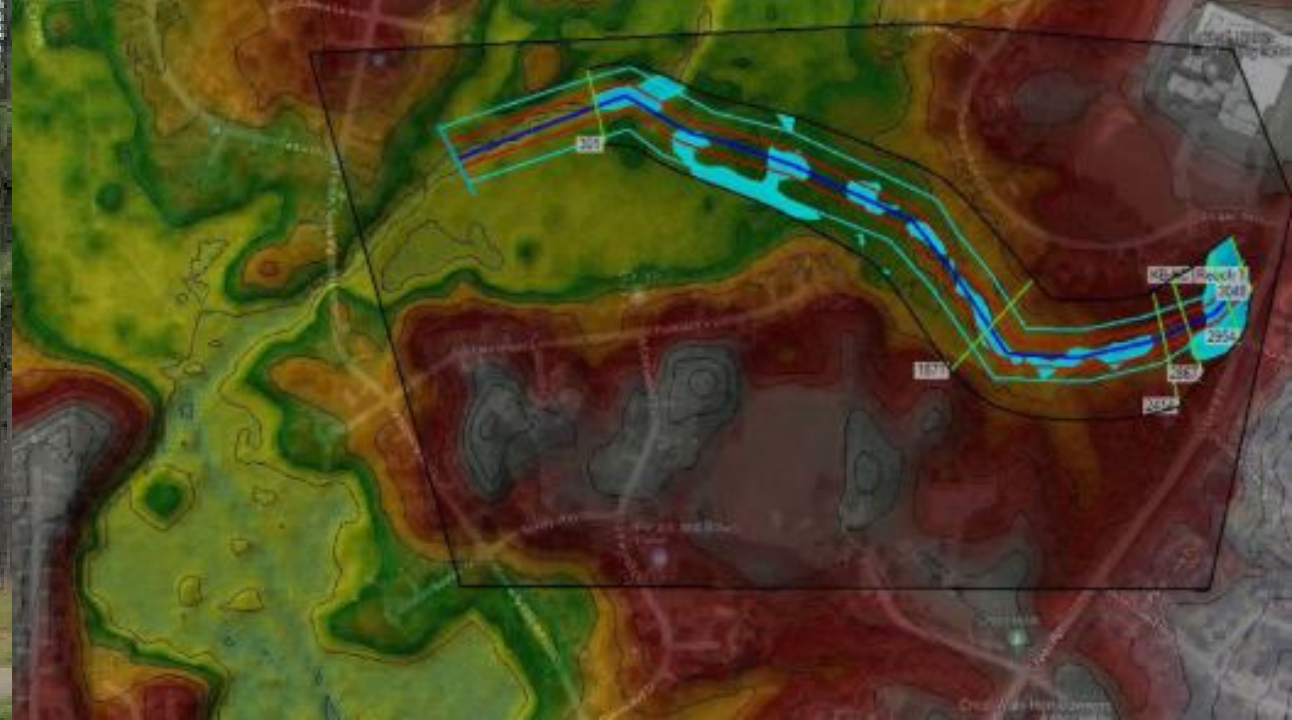
Ben Hill United Methodist Church – Stormwater Mitigation Analysis:

Engineered solution to mitigate flooding at the pedestrian ramp and adjacent elevator pit as outlined by best management practices specified in the Georgia Stormwater Manual.

Rear Guest Houses – Site Design & Zoning:

Developed full site design and secured re-zoning and special use permit approval while meeting strict landscaping requirements.

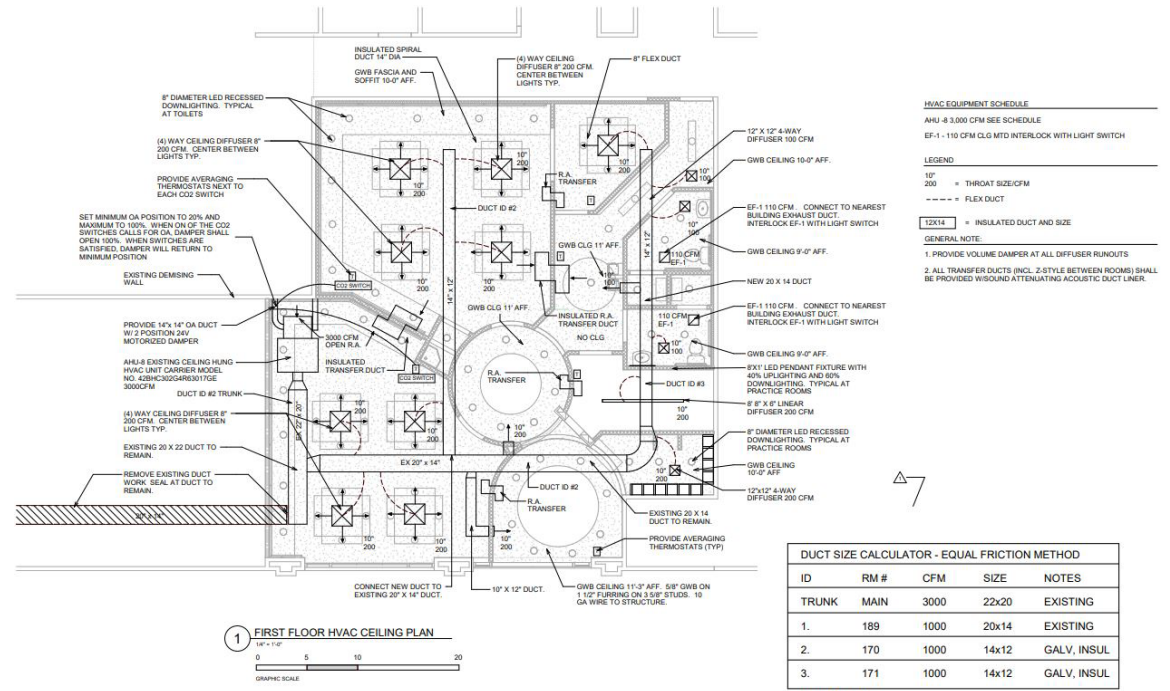




Led a comprehensive hydrologic and hydraulic analysis to assess flood risks surrounding the church. The findings informed infrastructure upgrades that strengthened climate resilience. Key Outcome: Improved stormwater planning for the site.

Led a comprehensive hydrologic and hydraulic analysis to assess flood risks surrounding the church. The findings informed infrastructure upgrades that strengthened climate resilience. Key Outcome: Improved stormwater planning for the site.

Collaborated on engineering and architectural drawings for a community wellness studio, integrating sustainable design practices.



Team-Based Contributions

- Regulator Station Design – Participated in the design of utility regulator stations, ensuring safe and efficient energy flow.
- FEMA Floodplain Studies – Supported compliance assessments and risk analysis for flood-prone areas across multiple communities.
- GDOT Bridge Design Analysis – Contributed to state-level bridge safety and design evaluations under Georgia DOT guidelines.
- Utility Mapping – Assisted in geospatial mapping of infrastructure networks for new development and upgrades.
- Airport Design – Contributed technical input in the planning and layout of airport infrastructure projects.
- Residential Design – Supported design and technical planning for housing developments focused on community livability.
- Highway Erosion Control & Stormwater Analysis – Helped evaluate and plan erosion control measures and stormwater systems for highway projects.

Let's Build Together

If you're a city leader, changemaker, funder, or creative visionary seeking to drive lasting impact, let's talk. This portfolio is just a snapshot of what's possible when community meets strategy and infrastructure meets imagination.

Connect with me:

- Email: coreyj@neighborind.com
- LinkedIn: <https://www.linkedin.com/in/corey-johnson-2675aa6a/>
- Website: <https://www.neighborind.com>