

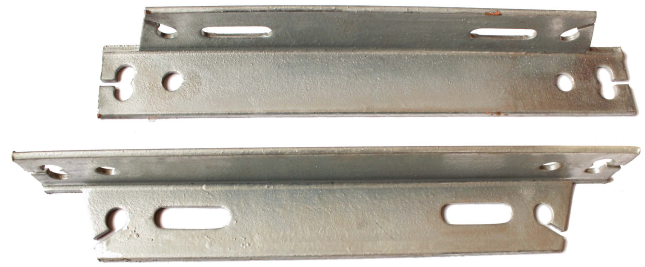


ELECTRICAL EQUIPMENT CO.,LTD

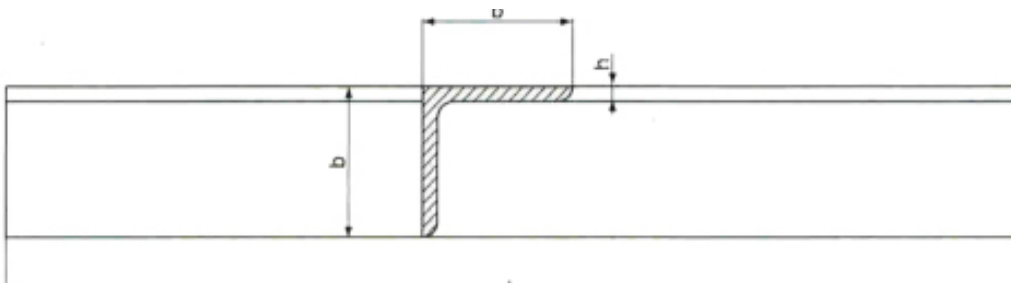
Reliable Pole line Hardware, Reliable Cooperation

ELECTRICAL CROSS ARM

In different application setups, there are different configurations for electrical cross arm. The material is steel. Finish: Hot-dip galvanized. Standard: ASTM123-78



| Catalog no. | Size(mm) | Finish | Approximately Weight (Kg./Pcs.) |
|--------------|-------------|--------------------|---------------------------------|
| JY-B0440 | 65x65x6x508 | Hot dip galvanized | 2.53 |
| JY-B0440- 01 | 65x65x6x965 | Hot dip galvanized | 5.6 |
| JY-B0441 | 50x50x4x508 | Hot dip galvanized | 1.53 |
| JY-B0441-01 | 50x50x4x965 | Hot dip galvanized | 2.8 |



| Catalog no. | Dimension (mm) | | | Weight (kg) |
|---------------|----------------|-------|-------|-------------|
| | H(mm) | b(mm) | L(mm) | |
| B01-0038 | 5 | 38 | 990 | 2.95 |
| B01-0045 | 4.75 | 45 | 3048 | 12 |
| B01-0050 | 5 | 50 | 2000 | 10.00 |
| B01-0060 | 6 | 60 | 2000 | 12.00 |
| B01-0076-10 | 6.35 | 76 | 1702 | |
| B01-0076-20 | 6.35 | 76 | 1830 | 13 |
| B01-0076-30 | 6.35 | 76 | 2440 | 17.5 |
| B01-0076-30-2 | 6.35 | 76 | 2440 | 23.5 |
| B01-0076-40 | 6.35 | 76 | 3350 | 23.5 |
| B01-0076-50 | 6.35 | 76 | 6100 | 42.7 |
| B01-0080 | 8 | 80 | 2000 | 16.5 |
| B01-0100 | 10 | 100 | 2000i | 21.00 |
| B01-0125 | 12 | 125 | 2000 | 26.5 |



CROSS ARM BRACE



The raw material for Jing Young crossarm braces is flat steel. The length of the crossarm braces are 20, 26, 28 or 32. The thickness is 1/4", Jing Young crossarm braces have rounded end. At one end there is a hole of 9/16, while the one at the other end is 7/16.

| Catalog no.. | Length Inch | Thickness(mm) | Approximately Weight (Kg./Pcs.) | Standard Packing Quantity/Bunckle |
|--------------|-------------|---------------|---------------------------------|-----------------------------------|
| JY-B0526L | 26- | 6 | 1.13 | 10 |
| JY-80528L | 28 | 6 | 1.20 | 10 |
| JY-B0530L | 30- | 6 | 1.23 | 10 |

ALLEY ARM

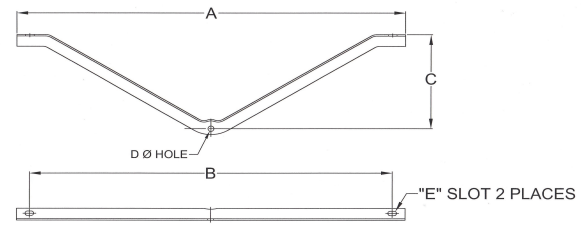


Jing Young Alley arm are widely used on overhead lines, utility pole, power pole and light pole. The main raw material for alley arm is angel steel and there are 60, 84 and 120" length for the alley arm

| Catalog no. | Angle Size(mm) | Length feet(mm) | Diamention A | Diamention B | Approximately |
|-------------|----------------|-----------------|--------------|--------------|---------------|
| JY-80320-01 | L45 X L45 X 5 | 7 (2,100) | 2,075 | 25 | 7.73 |
| JY-80320-02 | L50 X L50 X 5 | 7 (2,100) | 2,075 | 25 | 8.87 |
| JY-80321 | L50 x L50 x 6 | 8 (2,275) | 2,250 | 25 | 11.42 |
| JY-80322 | L50 x L50 x 8 | 10 (2,875) | 2,850 | 25 | 19.00 |

V CROSS ARM

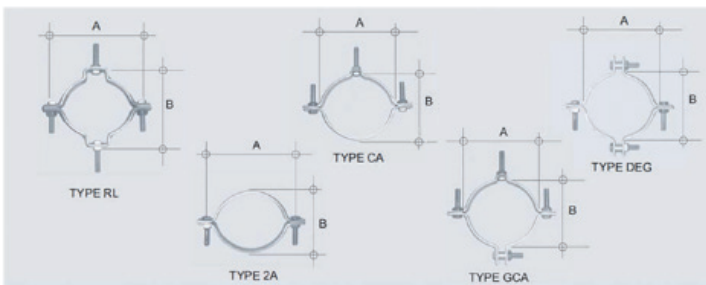
Brace: Angle



| Catalog no. | Span Inch(mm) | Drop Inch (mm) | Angle size(mm) | Approximately Weight (Kg./Pcs.) |
|-------------|---------------|----------------|----------------|---------------------------------|
| JY-80643 | 48 (1,219) | 14 (366) | L40 x L40 x 5 | 4.14 |
| JY-80643-01 | 48 (1,219) | 18 (457) | L40 X L40 X 5 | 4.40 |
| JY-80644 | 60 (1,524) | 18 (457) | L45 X L45 X 5 | 6.85 |
| JY-80644-01 | 72 (1,829) | 22 (559) | L50 x L50 x 5 | 8.20 |

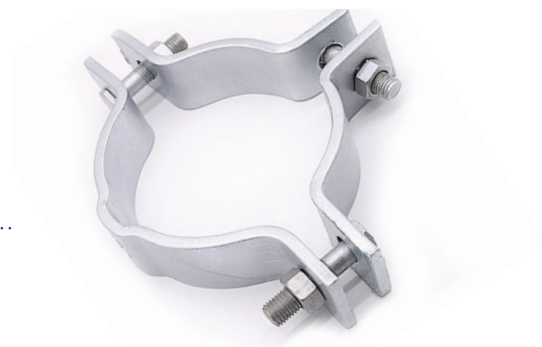
POLE BAND

According to the structure, pole band include single offset pole band and double offset pole band. Jing Young pole bands are used to wrap on the pole. Jing Young pole fastening clamp can be used with guy wire, stay wire and cable .



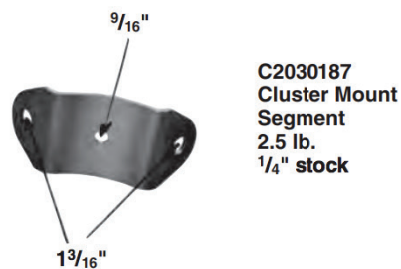
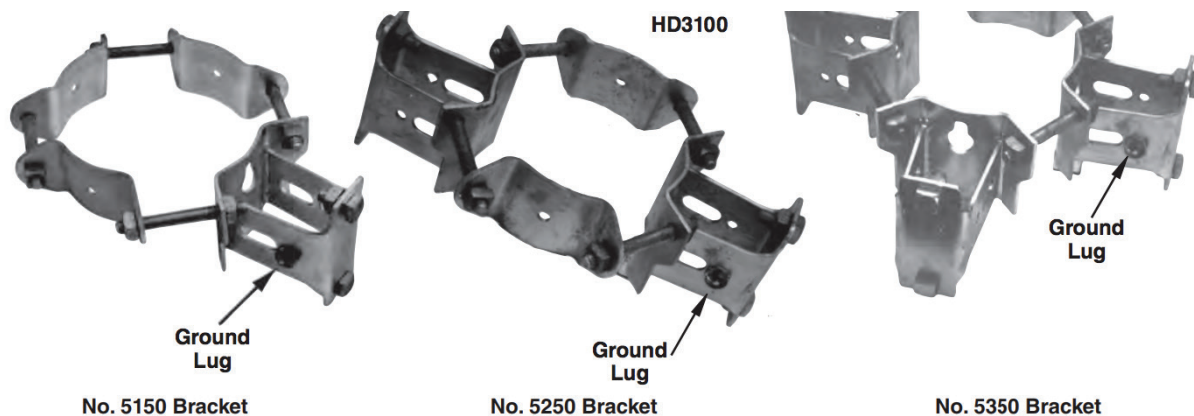
| Catalog no.. | Rang(mm) | Inch | A (mm) | B (mm) | Width(mm) | Thickness(mm) | Standard packing quantity/bundle |
|--------------|-----------|---------|--------|--------|-----------|---------------|----------------------------------|
| JY-COISOL-06 | 127 - 152 | 5- 6 | 152 | 127 | 50 | 6 | 5 |
| JY-COISOL-07 | 152 - 178 | 6-7 | 178 | 152 | 50 | 6 | 5 |
| JY-C0150L-08 | 178 - 203 | 7- 8 | 203 | 178 | 50 | 6 | 5 |
| JY-COISOL-09 | 203 -229 | 8 - 9 | 229 | 203 | 50 | 6 | 5 |
| JY-COISOL-10 | 229 - 254 | 9 -10 | 254 | 229 | 50 | 6 | 5 |
| JY-COISOL-11 | 254 - 279 | 10 - 11 | 279 | 254 | 50 | 6 | 5 |
| JY-COISOL-12 | 279 - 305 | 11 - 12 | 305 | 279 | 50 | 6 | 5 |
| JY-COISOL-14 | 330 - 356 | 13 - 14 | 356 | 330 | 50 | 6 | 5 |
| JY-C0150L-15 | 356 - 381 | 14 - 15 | 381 | 356 | 50 | 6 | 5 |

HEAVY DUTY



| Catalog no. | Diameter Inch (mm) | Rang(mm) | Inch | Width (mm) | Thickness (mm) | Standard packing quantity/ bundle |
|--------------|--------------------|-----------|---------|------------|----------------|-----------------------------------|
| JY-COISOH-08 | 8 (203) | 178 - 203 | 7- 8 | 64 | 6 | 5 |
| JY-COISOH-09 | 9 (229) | 203 -229 | 8-9 | 64 | 6 | 5 |
| JY-COISOH-10 | 10 (254) | 229 - 254 | 9 - 10 | 64 | 6 | 5 |
| JY-COISOH-11 | 11 (279) | 254 - 279 | 10 - 11 | 64 | 6 | 5 |
| JY-COISOH-12 | 12 (305) | 279 - 305 | 11 - 12 | 64 | 6 | 5 |
| JY-COISOH-13 | 13 (330) | 305 - 330 | 12 -13 | 64 | 6 | 5 |
| JY-COISOH-14 | 14 (356) | 330 - 356 | 13 - 14 | 64 | 6 | 5 |

TRANSFORM MOUNTING BRACKET



A. FOR MOUNTING OF 3 TO 50 KVA TRANSFORMER

| Catalog No. | Number of Bracket | Number of Bracket | Number of dummy plate | Weight/Pcs | Packing Quantity/ Bundle |
|-------------|-------------------|-------------------|-----------------------|------------|--------------------------|
| JY-C0251-01 | 1 | 1 | 3 | 7.00 | 1 |
| JY-C0251-02 | 2 | 2 | 2 | 9.70 | 1 |
| JY-C0251-03 | 3 | 3 | 1 | 12.40 | 1 |

B. FOR MOUNTING OF 75 TO 167 KVA TRANSFORMER

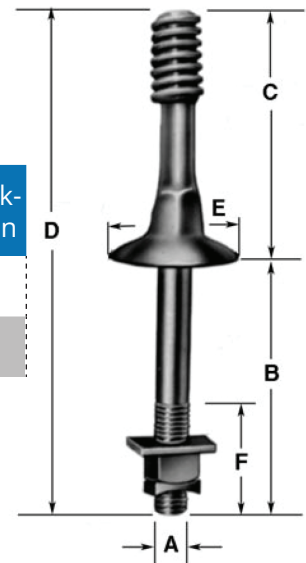
| Catalog no. | Number of Bracket | Number of Bracket | Number of Dummy Plate | Weight/Pcs | Packing Quantity/ Bundle |
|-------------|-------------------|-------------------|-----------------------|------------|--------------------------|
| JY-C0252-01 | 1 | 2 | 6 | 7.20 | 1 |
| JY-C0252-02 | 2 | 4 | 4 | 10.10 | 1 |
| JY-C0252-03 | 3 | 6 | 2 | 13.00 | 1 |

INSULATOR PIN & POLE TOP PIN

Insulator pin is used with pin insulators on 11kv/33kv distribution lines, power transmission lines, over head power lines. The pole top pin slotted channel sections are mounted against the pole by 5/8-inch bolts. The design of pole top pin is to allow easy removal for replacement of insulator units or fittings without the necessity to remove the insulator strings from the crossarms.

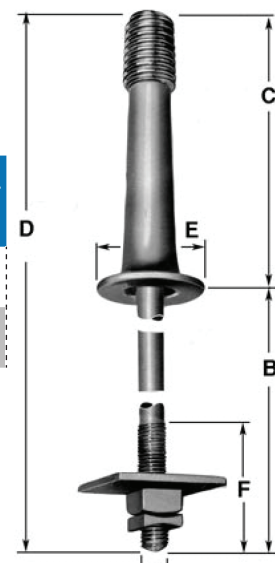
HIGH VOLTAGE STEEL PIN

| Catalog no. | A Inch | B Inch | C Inch | D Inch | Weight kg/100pcs | Standard packing Qty/carton |
|-------------|--------|--------|--------|--------|------------------|-----------------------------|
| JY-D0156-01 | 9 | 7 | 3/4 | 1-1/8 | 295.00 | 15 |
| JY-D0156-02 | 9 | 6-1/2 | 3/4 | 1 | 210.00 | 15 |

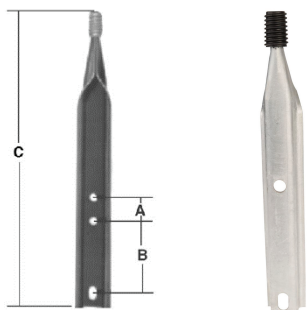


HIGH VOLTAGE STEEL PIN

| Catalog no. | A Inch (Lead thread) | F (mm) | C (mm) | D (mm) | Weight kg/100pcs | Standard packing Qty/Bundle |
|-------------|----------------------|--------|--------|--------|------------------|-----------------------------|
| JY-D0359-01 | 1 | 44 | 203 | 305 | 220.00 | 10 |
| JY-D0359-02 | 1-3/8 | 54 | 254 | 305 | 184.00 | 10 |



POLE TOP PIN



| Catalog no.. | A Inch (Lead thread) | B (INCH) | C (INCH) | Weight kg/100pcs | Standard packing Qty/carton |
|--------------|----------------------|----------|----------|------------------|-----------------------------|
| JY-00258-01 | 3 | 5 | 18 | 140.00 | 15 |
| JY-00258-02 | 3 | 8 | 20 | 180.00 | 15 |

DEADEND CLEVIS

| Catalog no. | CLEVIS OPENING | ANSI Insulator | weight/100pcs | Weight kg/100pcs |
|-------------|----------------|----------------|---------------|------------------|
| JY-F0213 | 85.7 | 53-2& 53-3 | 49.00 | 50 |



| Catalog no. | Description | weight/100pcs | Standard package quantity /carton |
|-------------|-------------------------|---------------|-----------------------------------|
| JY-F0522 | Flat Steel per ASTM A36 | 125.00 | 15 |

| Catalog no. | Description | Weight/100pcs | Standard Package Quantity /Carton |
|-------------|-------------|---------------|-----------------------------------|
| JY-F0623-01 | 150 | 50.50 | 40 |
| JY-F0623-02 | 225 | 65.5 | 35 |



| Catalog no. | Description | weight/100pcs | Standard package quantity /carton |
|-------------|--|---------------|-----------------------------------|
| JY-F0710A | For use with ANSI Insulators Class 53-2, 53-3, & | 60.00 | 18 |



SECONDARY CLEVIS



| Catalog no. | CLEVIS OPENING | Width | weight/100pcs | Standard package quantity /carton |
|-------------|---|-------|---------------|-----------------------------------|
| JY-F0710B | For use with ANSI Insulators Class 53-2 | 66 | 67 | 25 |

| Catalog no. | A | B | C | D | E | Weight/ 100Pcs | Standard pack- age Quantity / Carton |
|-------------|-----|----|----|----|-----|----------------|--------------------------------------|
| JY-F0315 | 126 | 16 | 38 | 88 | 4.5 | 60.00 | 50 |



SECONDARY RACK, HEAVY DUTY (EXTENDED BACK)



| Catalog no. | NO. of wire mm | Wire Spacing | Length mm | Weight/ 100pcs | Standard pack- age quantity / carton |
|--------------|----------------|--------------|-----------|----------------|--------------------------------------|
| JY-F0420- H3 | 3 | 200 | 605 | 360 | 5 |
| JY-F0420- H2 | 2 | 200 | 450 | 204 | 5 |

SECONDARY RACK MEDIUM DUTY

| Catalog no.. | NO. of wire mm | Wire Spacing | Length mm | Weight/100pcs | Standard Package Quantity /Carton |
|---------------|----------------|--------------|-----------|---------------|-----------------------------------|
| JY-F0421-MD3 | 3 | 200 | 524 | 250 | 5 |
| JY-F0421- MD2 | 2 | 200 | 340 | 160 | 5 |

SECONDARY RACK LIGHT DUTY

| Catalog no. | NO. of wire mm | Wire Spacing | Length mm | Weight/ 100pcs | Standard Package Quantity /Carton |
|-------------|----------------|--------------|-----------|----------------|-----------------------------------|
| JY-F0421-L3 | 3 | 200 | 524 | 250 | 5 |
| JY-F0421-L2 | 2 | 200 | 340 | 160 | 5 |



GUY CLAMP

Guy clamp is mainly used on the communication line. It used together with the stay wire and an-chor rod to make the pole stable. When the stay wire goes across the anchor rod, the 3 bolt clamp bites the end of the stay wire to prevent the stay wire from creeping down.



JY-5055



JY-7902



JY-7903



JY-7904



JY-7901



JY-6449

JY-6450



JY-6460

| TYPE | Length | Width | Product Finish | Material | Note | Weight | Accommodates |
|-------------------|-------------|----------|------------------------|----------|------------------------------------|----------|---------------|
| JY-5055 | 1 15/16" | 1 9/16" | Galvanized, ASTM A-153 | Steel | One bolt 1/2" guy clamp | 0.6 lbs | 1/4" to 7/16" |
| JY-Straight 6450 | 6" (152 mm) | 1 9/16" | Galvanized, ASTM A-153 | Steel | Three 1/2" Carriage Clamping Bolts | 2.12 lbs | 1/4" to 7/16" |
| JY-Straight 6460 | 6" (152 mm) | 2 1/8" | Galvanized, ASTM A-153 | Steel | Three 5/8" Carriage Clamping Bolts | 4.05 LBS | 3/8" to 5/8" |
| JY-Straight 6461 | 6" (152 mm) | 1-21/32" | Galvanized, ASTM A-153 | Steel | Three 5/8" Carriage Clamping Bolts | 2.4 lbs | 5/16" to 1/2" |
| JY-Straight 6462 | 4" (102 mm) | 1 21/32" | Galvanized, ASTM A-153 | Steel | Two 5/8" Carriage Clamping Bolts | 1.74 lbs | 5/16" to 1/2" |
| JY-Straight 7901 | 2 1/2" | | Galvanized, ASTM A-153 | Steel | 5/8" Mounting Bolt | 0.66 lbs | 1/4" to 7/16" |
| JY-Angled 7902L | 7" (178 mm) | | Galvanized, ASTM A-153 | Steel | 5/8" Mounting Bolt | 2 lbs | 1/4" to 7/16" |
| JY-Angled 7902R | 7" (178 mm) | | Galvanized, ASTM A-153 | Steel | 3/4" Mounting Bolt | 1.97 lbs | 1/4" to 7/16" |
| JY-Straight 7903 | 5 3/4" | | Galvanized, ASTM A-153 | Steel | 5/8" Mounting Bolt | 1.83 lbs | 1/4" to 7/16" |
| JY-Straight 7903L | 5 3/4" | | Galvanized, ASTM A-153 | Steel | 5/8" Mounting Bolt | 1.57 lbs | 1/4" to 7/16" |
| JY-Angled 7904 | 5 3/4" | | Galvanized, ASTM A-153 | Steel | 3/4" Mounting Bolt | 1.74 lbs | 1/4" to 7/16" |

SECONDARY RACK LIGHT DUTY

| Catalog no. | Weight/ 100pcs | Standard package Qty/ Carton |
|--------------|-------------------|---------------------------------|
| JY-G0206 | 43 | 60 |
| JY-G0206- 01 | Press steel | 50 |



GUY ATTACHMENT



| Catalog no. | Steel size(mm) | Weight/100pcs | Standard packing Qty/carton |
|-------------|----------------|---------------|--------------------------------|
| JY-G0851 | 75 X 6 | 145.00 | 50 |
| JY-G0852 | 50 X 6 | 71.00 | 50 |
| JY-G0853 | 44 X 6 | 147.00 | 20 |

GUY CLAMP

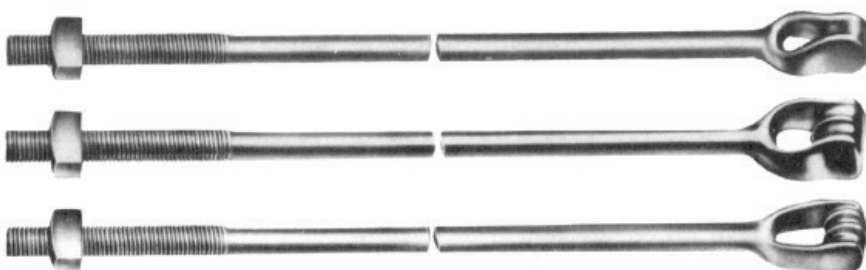
Jing Young guy thimble is usually assembled as an accessory. It is also used on stay rod to connect the guy

| Catalog no. | Strand Size(Inch) | A | B | L | Thickness (mm) | Weight/ 100pcs | Standard package Qty/ Carton |
|--------------|----------------------|----|----|----|-------------------|-------------------|------------------------------------|
| JY-G0750- 38 | 3/8 | 20 | 30 | 55 | 3.0 | 10.00 | 250 |
| JY-G0750-12 | 1/2 | 25 | 40 | 80 | 3.0 | 12.40 | 150 |
| JY-G0750-58 | 5/8 | 35 | 50 | 90 | 3.0 | 15.00 | 150 |



ANCHOR ROD

anchor rods are dropped forged to single or double strand eyes. Jing Young alternatively anchor rods are furnished with oval eyes together with an equivalent number of wire strand thimble



| Rod Diameter | Thimble eye (mm) | | | Twin Eye(mm) | | | Triple eye (mm) | | |
|--------------|--------------------|--------------|------------|--------------------|--------------|------------|--------------------|--------------|------------|
| | Height of the head | Eye diameter | Head width | Height of the head | Eye diameter | Head width | Height of the head | Eye diameter | Head width |
| 5/8 | 18 | 14 | 38 | 24 | 6 | 46 | 40 | 6 | 67 |
| 3/4 | 21 | 18 | 41 | 25 | 6 | 50 | 40 | 6 | 69 |
| 1 | 28 | 24 | 50 | 32 | 8 | 60 | 40 | 6 | 75 |

FORGED EYE SHAFT

Guy thimble is usually assembled as an accessory. It is also used on stay rod to connect the guy



| Thimble eye (mm) | | | Twin Eye(mm) | | | Triple eye (mm) | | |
|-----------------------|--------------|------------|--------------------|--------------|------------|--------------------|--------------|------------|
| Shaft diameter (inch) | Eye diameter | Head width | Height of the head | Eye diameter | Head width | Height of the head | Eye diameter | Head width |
| 3/4 | 6 | 6 | G1501-06 | 474.00 | G1504 -06 | 464.00 | G7207-06 | |
| | 7 | | G1501-07 | 530.00 | G1504-07 | 540.00 | G7207-07 | |
| | 8 | | GISOI -08 | 588.00 | G1504-08 | 598.00 | G7207-08 | |
| 1 | 6 | 8 | G1502-06 | 543.00 | GISOS-06 | 552.00 | G7208-06 | 568 |
| | 7 | | G1502 -07 | 598.00 | G1505-07 | 609.00 | G7208-07 | 632 |
| | 8 | | G1502-08 | 657.00 | GISOS-08 | 665.00 | G7208 -08 | 685 |
| 1 | 7 | 8 | G1503-07 | 918.00 | G1506-07 | 1012 | G7209-07 | |
| | 8 | | G1503-08 | 1,091.00 | G1506-08 | 1129 | G7209-08 | |
| | 9 | | G1503-09 | 1,212.00 | G1506-09 | 1245 | G7209 - 09 | |
| | 10 | | G1503-10 | 1,324.00 | G1506-10 | 1362 | G7209-10 | |

GUY BOUND CLAMP

guy bound clamp are used when down guy ,also cervice as ground. It maintains a firm contact between the guy strand and the anchor rod.

| Catalog no. | Weight/ 100pcs | Standard package Qty/ Carton |
|-------------|----------------|------------------------------|
| 5/8 | G1430 - 5/8 | G1430E- 5/8 |
| 3/4 | G1430 - 3/4 | G1430E- 3/4 |
| 1 | G1430 - 1 | G1430E-1 |



ANCHOR EXPANDING 8 WAY

Jing Young anchor expanding 8 way is assembled together with anchor rod to firm the pole on the ground



| Catalog no. | NO. of wire mm | Wire Spacing | Length mm | Weight/ 100pcs | Standard package QTY /Carton |
|-------------|----------------|--------------|-----------|----------------|------------------------------|
| JY-G1630-06 | 6 | 5/8 | 64 | 231 | 5 |
| JY-G1630-07 | 7 | 5/8 | 92 | 310 | 5 |
| JY-G1630-08 | 8 | 5/8 | 135 | 390 | 5 |
| JY-G1634-08 | 8 | 3/4 | 135 | 435 | 5 |
| JY-G1631-08 | 8 | 1 | 135 | 435 | 5 |

CROSS-PLATE ANCHOR

Cross-plate anchor for 16inch hole is used with 5/8 or 3/4 diameter rod

| Catalog no. | Anchor type | Rod diameter | Anchor Hole size | Area | Weight | Standard pkg Qty/Carton |
|-------------|-------------------------------|-------------------------------------|------------------|-----------------------|--------|-------------------------|
| JY-G1801 | Bust Anchor, Expanding Anchor | 0.625" (15.9 mm) 0.75" (19.1 mm) | 16" (406 mm) | 150 sq in (968 sq cm) | 463.00 | 6 |



CROSS-PLATE ANCHOR

Jing Young reinforcing plate prevents damage to 4inch x5inch or wood 6"x 8"from tightened nuts. The design has a pressed rib and is normally used on the side of the crossarm.

| Catalog no. | Base Plate Inch | Rod Diameter (Inch) | Area expand top plate Sq. Inch | Weight/ 100pcs | Standard pkg Qty/Carton |
|-------------|-----------------|---------------------|--------------------------------|----------------|-------------------------|
| JY-G1745 | 4"x 5" | 13/16" | 3/16" | 74.00 | 25 |
| JY-G1768 | 6"x 8" | 15/16" | 1/4 " | 123.00 | 25 |



GROUND ROD

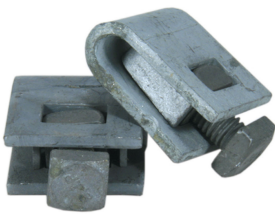
| Rod Size (inch) | Length (feet) | Catalog no. | Weight/ 100pcs | Standard pkg Qty/ bundle | Catalog no. | Weight/ 100pcs | Standard pkg Qty/ Carton | Catalog no. | Weight/1 00pcs | Standard pkg Qty/ bundle |
|-----------------|---------------|-------------|----------------|--------------------------|-------------|----------------|--------------------------|-------------|----------------|--------------------------|
| 1/2 | 3 | HOIII -03 | 78.20 | 10 | H0112-03 | 78.20 | 10 | H0113-03 | 103.00 | 10 |
| | 4 | HOIII -04 | 104.50 | 10 | H0112-04 | 104.50 | 10 | H0113 -04 | 129.00 | 10 |
| | 5 | HOIII -05 | 130.50 | 10 | H0112 -05 | 130.50 | 10 | H0113 -05 | 154.00 | 10 |
| | 6 | HOIII -06 | 156.50 | 10 | H0112 -06 | 156.50 | 10 | H0113-06 | 180.00 | 10 |
| 5/8 | 5 | HOIIS-05 | 197.50 | 10 | H0116-05 | 197.50 | 10 | H0117-05 | 221.00 | 5 |
| | 6 | HOIIS-06 | 236.00 | 10 | H0116-06 | 236.00 | 10 | H0117-06 | 260.00 | 5 |
| | 8 | H0115 -08 | 315.00 | 5 | H0116-08 | 315.00 | 5 | H0117-08 | 340.00 | 5 |
| | 10 | HOIIS-10 | 394.00 | 5 | H0116-10 | 394.00 | 5 | H0117-10 | 415.00 | 5 |
| 3/4 | 7 | H0120-07 | 399.00 | 5 | H0121-07 | 399.00 | 5 | H0122-07 | 421.00 | 5 |
| | 8 | H0120-08 | 456.00 | 5 | H0121-08 | 456.00 | 5 | H0122-08 | 480.00 | 5 |
| | 10 | H0120-10 | 570.00 | 5 | H0121-10 | 570.00 | 5 | H0122 -10 | 590.00 | 5 |

CABLE MESSENGER HANGER

| Catalog no. | Weight/100pcs | Standard Packageing /carton |
|-------------|---------------|-----------------------------|
| JY-J0109 | 147.50 | 20 |



GROUND STRAND CLAMP



| Catalog no. | Weight/100pcs | Standard Packageing /carton |
|-------------|---------------|-----------------------------|
| JY-J0217 | 30.00 | 100 |

CROSSOVER CLAMP

| Catalog no. | Length | Width | Thickness | weight/100pcs | Standard Packageing / carton |
|-------------|--------|-------|-----------|---------------|------------------------------|
| JY-J0207 | 83 | 38 | 12 | 60 | 35 |

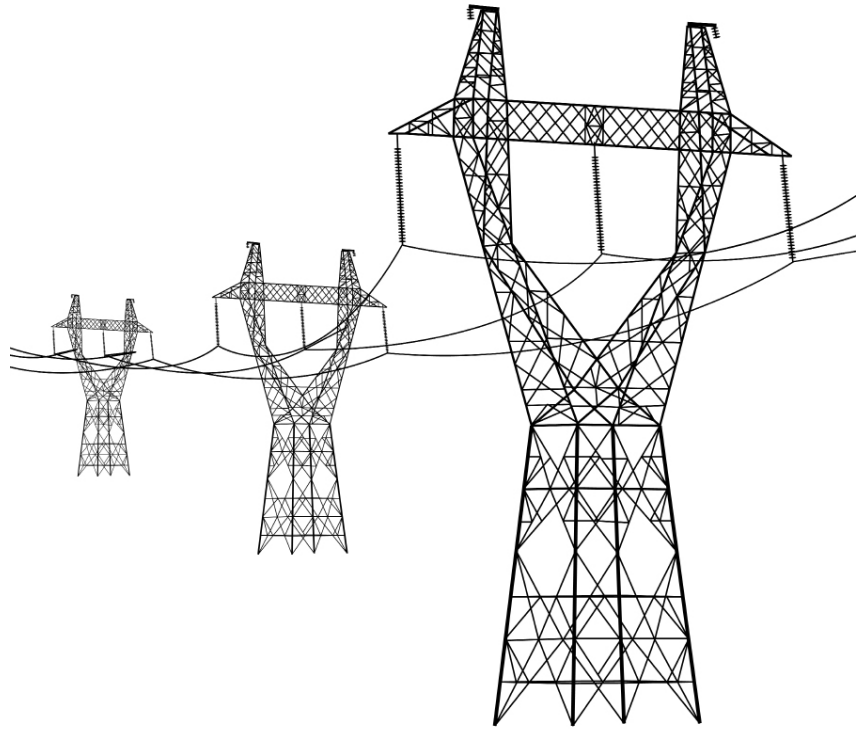


WALL STRAP GUY EYE



| Catalog no. | Hole Dia. (mm) | No. Of hole | L | T | W | C | D | weight/100pcs | Standard Pack-ageing /carton |
|---------------|----------------|-------------|-----|---|----|-----|----|---------------|------------------------------|
| JY-J0335 - 01 | 14 | 2 | 422 | 8 | 34 | 203 | 18 | 1.04 | 25 |
| JY-J0335 - 02 | 14 | 3 | 610 | 8 | 34 | 203 | 18 | 1.5 | 20 |

SERIOUS 2 STRING HARDWARE



DOUBLE ARMING PLATE/YOKE PLATE

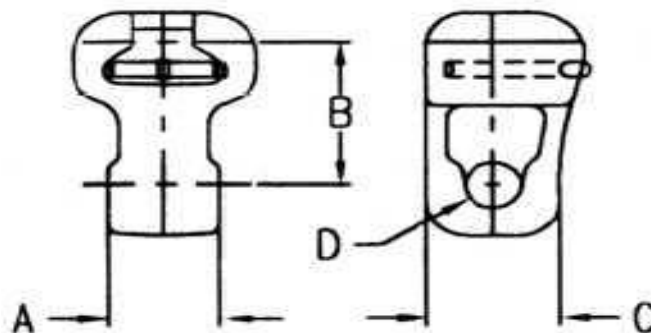
Jing Young Yoke plate is a string hardware which used to couple the electrical clevis, socket tongue or insulators.

| Catalog no. | Steel size Inch | Length Inch | Hole | Slot | Weight kg/100pcs | Standard packing Qty/ Bundle |
|-------------|-----------------|-------------|-------|--------------|------------------|------------------------------|
| JY-00400-01 | 4 X 1/2 | 24 | 13/16 | 13/16 X 3/12 | 563.00 | 5 |
| JY-00400-02 | 4 X 1/4 | 17 | 11/16 | 11/16 X 3 | 210.00 | 10 |



BALL SOCKET

Jing Young Socket clevis is also called socket tongue. It is widely used on the transmission line, overhead line and power line. The socket clevis is an indispensable pole line hardware which connects the tension clamp and socket type insulator.



| Catalog no. | ANSI Class | A | B | C | D | Ultimate strength LBS | Weight kg/100pcs | Standard packing Qty/carton |
|-------------|-------------|-------|-------|-------|-------|-----------------------|------------------|-----------------------------|
| JY-E0212 | 52-3 Only | 2-1/8 | 1/2 | 1-3/4 | 11/16 | 16,000 | 53.00 | 50 |
| JY-E0258 | 52-3 Only | 2-1/8 | 5/8 | 1-5/8 | 11/16 | 16,000 | 72.00 | 40 |
| JY-E0234 | 52-3 & 52-5 | 2-1/8 | 3/4 | 1-3/4 | 11/16 | 25,000 | 81.00 | 40 |
| JY-E0278 | 52-3 & 52-5 | 2-1/8 | 7/8 | 1-5/8 | 11/16 | 25,000 | 81.00 | 40 |
| JY-E0225 | 52-3 & 52-5 | 3 | 1-1/4 | 2 | 11/16 | 30,000 | 104.00 | 35 |

BALL CLEVIS

ball clevis is one kind of string hardware which connects the socket insulator or socket tongue by the ball head. According to the different shapes, there is another type called Y clevis.

| Catalog no.. | ANSI Class | A | B | C | Ultimate strength LBS | Weight kg/100pcs | Standard packing Qty/carton |
|--------------|------------|-------|---|-------|-----------------------|------------------|-----------------------------|
| JY-E0458-01 | 52-3 | 2-1/2 | 4 | 5/8 | 30,000 | 56.30 | 35 |
| JY-E0458-02 | 52-5 | 2-1/2 | 4 | 23/32 | 30,000 | 56.35 | 35 |
| JY-E0458-03 | 52-3 | 1-1/2 | 3 | 5/8 | 30,000 | 48.10 | 35 |
| JY-E0458-04 | 52-5 | 1-1/2 | 3 | 23/32 | 30,000 | 48.15 | 35 |



“Y” TYPE

| Catalog no.. | ANSI Class | A | B | C | Ultimate strength LBS | Weight kg/100pcs | Standard packing Qty/carton |
|--------------|------------|-------|-------|-------|-----------------------|------------------|-----------------------------|
| JY-E0559 | 52-3 | 1-1/2 | 1-1/2 | 1-1/2 | 30,000 | 48.00 | 25 |



“U CLEVIS



| Catalog no. | A | B | C | D | E | F | G | Breaking strength lbs | Weight kg/100pcs | Standard packing Qty/ carton |
|-------------|-------|-----|-------|-------|-----|-------|--------|-----------------------|------------------|------------------------------|
| JY-E0613 | 2-1/2 | 5/8 | 1-3/4 | 11/16 | 7/8 | 13/16 | 1-1/8 | 20,000 | 65.00 | 40 |
| JY-E0614 | 2-5/8 | 7/8 | 1-1/2 | 11/16 | 7/8 | 13/16 | 1-1/16 | 25,000 | 70.00 | 40 |
| JY-E0615 | 3-1/8 | 5/8 | 1-5/8 | 11/16 | 7/8 | 13/16 | 1-1/12 | 30,000 | 75.00 | 40 |

FASTENNER

Industrial fastener includes oval eye bolt, thimble eye bolt, pigtail eye bolt, double arming bolt, U bolt, hex bolt and nut, eye nut, square head bolts and nuts, square washers. All the Jing Young industrial fasteners are hot dip galvanized according to ISO 1461 or ASTM 153. The main process in making the industrial fasteners are hot forged.

SQUAREHEAD BOLT

1 / 2 INCH DIAMETER

Minimum Tensile Strength: 35,000 Kg



| Catalog no. | Bolt Length inch(mm) | Thread Length Inch(mm) | Approx. Weight (Kg./1100 Pcs.) | Weight/ 100pcs |
|--------------|----------------------|------------------------|--------------------------------|----------------|
| JY-A0112-1.5 | 1-1/2 (38) | 1-1/4 (32) | 7.70 | 250 |
| JY-A0112-02 | (50) | 1-3/4 (44) | 8.70 | 200 |
| JY-A0112-2.5 | 2-1/2 (63) | 2-1/4 (58) | 10.00 | 200 |
| JY-A0112-03 | (75) | 2-3/4 (69) | 11.00 | 200 |
| JY-A0112-04 | (100) | (75) | 13.00 | 200 |
| JY-A0112-05 | (125) | (75) | 15.00 | 200 |
| JY-A0112-06 | (150) | (75) | 17.00 | 100 |
| JY-A0112-08 | (200) | (100) | 21.00 | 100 |
| JY-A0112-10 | (250) | (100) | 25.00 | 100 |
| JY-A0112-12 | (300) | (150) | 29.00 | 100 |
| JY-A0112-14 | (350) | (150) | 33.00 | 75 |
| JY-A0112-16 | (400) | (150) | 37.00 | 75 |
| JY-A0112-18 | (450) | (150) | 41.00 | 80 |
| JY-A0112-10 | (250) | (100) | 25.00 | 100 |
| JY-A0112-12 | (300) | (150) | 29.00 | 100 |
| JY-A0112-14 | (350) | (150) | 33.00 | 75 |
| JY-A0112-16 | (400) | (150) | 37.00 | 75 |
| JY-A0112-18 | (450) | (150) | 41.00 | 80 |

5/8 INCH DLAMETE

Minimum Tensile Strength: 5,680 Kg

| Catalog no. | Bolt Length inch(mm) | Thread Length Inch(mm) | Approximately Weight (Kg./1100 Pcs.) | Standard Pkg. Qty. 1 Carton |
|-------------|----------------------|------------------------|--------------------------------------|-----------------------------|
| JY-A0158-05 | 5 (125) | (150) | 25.00 | 100 |
| JY-A0158-06 | (150) | (150) | 29.00 | 60 |
| JY-A0158-08 | (200) | (150) | 35.00 | 65 |
| JY-A0158-10 | (250) | (150) | 42.00 | 50 |
| JY-A0158-12 | (300) | (150) | 48.00 | 50 |
| JY-A0158-14 | (350) | (150) | 53.00 | 50 |
| JY-A0158-16 | (400) | (150) | 61.00 | 50 |
| JY-A0158-18 | (450) | (150) | 68.00 | 50 |
| JY-A0158-20 | (500) | (150) | 74.00 | 50 |
| JY-A0158-22 | (550) | (150) | 81.00 | 50 |
| JY-A0158-24 | (600) | (150) | 86.25 | 50 |
| JY-A0158-26 | (650) | (150) | 93.50 | 10/ bundle |
| JY-A0158-28 | (700) | (150) | 96.50 | 10/ bundle |

3/4 INCH DIAMETER

Minimum Tensile Strength: 8,340 Kg

| Catalog no. | Bolt Length (inch mm) | Thread Length Inch(mm) | Approximately Weight (Kg./1100 Pcs.) | Standard Pkg. Qty. 1 Carton |
|-------------|-----------------------|------------------------|--------------------------------------|-----------------------------|
| JY-A0134-08 | 8 (200) | 4 (100) | 51.00 | 51.00 |
| JY-A0134-10 | 10 (250) | 4 (100) | 61.00 | 61.00 |
| JY-A0134-12 | 12 (300) | 6 (150) | 71.00 | 71.00 |
| JY-A0134-14 | 14 (350) | 6 (150) | 80.00 | 80.00 |
| JY-A0134-16 | 16 (400) | 6 (150) | 90.00 | 90.00 |
| JY-A0134-18 | 18 (450) | 6 (150) | 100.00 | 100.00 |
| JY-A0134-20 | 20 (500) | 6 (150) | 110.00 | 110.00 |
| JY-A0134-22 | 22 (550) | 6 (150) | 116.00 | 116.00 |
| JY-A0134-24 | 24 (600) | 6 (150) | 122.00 | 122.00 |
| JY-A0134-26 | 26 (650) | 6 (150) | 128.00 | 128.00 |

7 /8 INCH DIAMETER

Minimum Tensile Strength: 11,550 Kg.

| Catalog no. | Bolt Length (inch mm) | Thread Length Inch(mm) | Approximately Weight (Kg./1100 Pcs.) | Standard Pkg. Qty. 1 Carton |
|-------------|-----------------------|------------------------|--------------------------------------|-----------------------------|
| JY-A0178-14 | 14 (350) | 6 (150) | 6 (150) | 25 |
| JY-A0178-16 | 16 (400) | 6 (150) | 6 (150) | 25 |
| JY-A0178-18 | 18(450) | 6 (150) | 6 (150) | 25 |
| JY-A0178-20 | 20(500) | 6 (150) | 6 (150) | 25 |
| JY-A0178-22 | 22(550) | 6 (150) | 6 (150) | 25 |

BRACE BOLT

| Catalog no. | Diameter (inch) | Bolt Length inch(mm) | Thread Length Inch(mm) | Approx. Weight (Kg./1100 Pcs.) | Standard Pkg. Qty./ Carton |
|--------------|-----------------|----------------------|------------------------|--------------------------------|----------------------------|
| JY-A0238-4.5 | 3/8 | 4-1/2(113) | 2(50] | 9.60 | 250 |
| JY-A0212-4.5 | 1/2 | 4-1/2(113) | 2(50] | 18.10 | 250 |



CARRIAGE BOLT

HOT DIP GALVANIZED

3/8 INCH DIAMETER

Minimum Tensile Strength: 3,500 Kg



| Catalog no. | Bolt Length inch(mm) | Thread Length Inch(mm) | Approx. Weight (Kg./1100 Pcs.) | Standard Pkg. Qty. / Carton |
|--------------|----------------------|------------------------|--------------------------------|-----------------------------|
| JY-A0338-03 | 3 (75) | 2(50) | 7.00 | 150 |
| JY-A0338-04 | 4 (100) | 3(75) | 6.10 | 150 |
| JY-A0338-4.5 | 4-1/2 (113) | 3(75) | 6.70 | 150 |
| JY-A0338-05 | 5 (125) | 3(75) | 7.10 | 150 |
| JY-A0338-5.5 | 5-1/2 (138) | 3(75) | 9.20 | 150 |
| JY-A0338-06 | 6 (150) | 3(75) | 9.20 | 150 |

1 /2 INCH DIAMETER

Minimum Tensile Strength: 3,500 Kg

| Catalog no. | Bolt Length inch(mm) | Thread Length Inch(mm) | Approx. Weight (Kg./1100 Pcs.) | Standard Pkg. Qty. / Carton |
|--------------|----------------------|------------------------|--------------------------------|-----------------------------|
| JY-A0312-4.5 | 4-1/2 (113) | 3(75) | 13.00 | 200 |
| JY-A0312-05 | 5 (125) | 3(75) | 13.50 | 200 |
| JY-A0312-5.5 | 5-1/2 (138) | 3(75) | 15.60 | 200 |
| JY-A0312-06 | 6(150) | 3(75) | 16.30 | 200 |
| JY-A0312-07 | 7 (175) | 4(100) | 18.60 | 200 |
| JY-A0312-08 | 8 (200) | 4(100) | 20.90 | 200 |
| JY-A0312-4.5 | 4-1/2 (113) | 3(75) | 13.00 | 200 |

DOUBLE ARMING BOLT**HOT DIP GALVANIZED**

As all thread bolts go through the pole, the two ends of the double arming bolt will be locked and secured by nut and washer.

**1 / 2 INCH DIAMETER** Minimum Tensile Strength: 3,500 Kg

| Catalog no. | Bolt Length | Approx. Weight (Kg./1100 Pcs.) | Standard Pkg. Qty. /Carton |
|-------------|-------------|--------------------------------|----------------------------|
| JY-A0412-10 | 10 (250) | 10 (250) | 75 |
| JY-A0412-12 | 12 (300) | 12 (300) | 70 |
| JY-A0412-14 | 14 (350) | 14 (350) | 65 |
| JY-A0412-16 | 16 (400) | 16 (400) | 65 |

5/8 INCH DIAMETER Minimum Tensile Strength: 5,680 Kg

| Catalog no. | Bolt Length | Approx. Weight (Kg./1100 Pcs.) | Standard Pkg. Qty. /Carton |
|-------------|-------------|--------------------------------|----------------------------|
| JY-A0458-10 | 10 (250) | 49.00 | 40 |
| JY-A0458-12 | 12 (300) | 56.00 | 50 |
| JY-A0458-14 | 14 (350) | 62.00 | 35 |
| JY-A0458-16 | 16 (400) | 69.00 | 40 |
| JY-A0458-18 | 18 (450) | 75.00 | 40 |
| JY-A0458-20 | 20 (500) | 82.00 | 40 |
| JY-A0458-22 | 22 (550) | 88.00 | 40 |
| JY-A0458-24 | 24 (600) | 95.00 | 40 |
| JY-A0458-26 | 26 (650) | 101.00 | 10 / bundle |
| JY-A0458-28 | 28 (700) | 108.00 | 10 / bundle |
| JY-A0458-30 | 30 (750) | 114.00 | 10 / bundle |
| JY-A0458-32 | 32 (800) | 121.00 | 10 / bundle |

5/8 INCH DIAMETER Minimum Tensile Strength: 8,340 Kg.

| Catalog no. | Bolt Length | Approx. Weight (Kg./1100 Pcs.) | Standard Pkg. Qty. /Carton |
|-------------|-------------|--------------------------------|----------------------------|
| JY-A0434-12 | 12 (300) | 58.00 | 35 |
| JY-A0434-14 | 14 (350) | 66.00 | 30 |
| JY-A0434-16 | 16 (400) | 77.00 | 35 |
| JY-A0434-18 | 18 (450) | 86.00 | 35 |
| JY-A0434-20 | 20 (500) | 96.00 | 35 |
| JY-A0434-22 | 22 (550) | 105.00 | 35 |
| JY-A0434-24 | 24 (600) | 115.00 | 30 |
| JY-A0434-26 | 26 (650) | 124.00 | 10 / bundle |
| JY-A0434-28 | 28 (700) | 134.00 | 10 / bundle |
| JY-A0434-30 | 30 (750) | 143.00 | 10 / bundle |

SQUARE NUT



REGULAR

| Catalog no. | Nominal Size(mm) | Thread per Inch (mm) | Approx. Weight (Kg./1100 Pcs.) | Standard Pkg. Qty. / Carton |
|-------------|------------------|----------------------|--------------------------------|-----------------------------|
| JY-AOS38R | 0.375 (9) | 16 (400) | 1.20 | 2,000 |
| JY-A0512R | 0.5 (13) | 13 (325) | 2.50 | 1,000 |
| JY-AOSSSR | 0.625 (16) | 11 (275) | 4.20 | 500 |
| JY-A0534R | 0.75 (19) | 10 (250) | 6.50 | 400 |
| JY-A0578R | 0.875 (22) | 9 (225) | 11.00 | 250 |
| JY-A0338-06 | 6 (150) | 3(75) | 9.20 | 150 |

HEAVY

| Catalog no. | Nominal Size(mm) | Thread per Inch (mm) | Approx. Weight (Kg./1100 Pcs.) | Standard Pkg. Qty. / Carton |
|-------------|------------------|----------------------|--------------------------------|-----------------------------|
| A0558H | 0.625 (16) | 0.625 (16) | 5.80 | 500 |
| JY-AOS34H | 0.75 (19) | 0.75 (19) | 10.90 | 250 |
| JY-A0578H | 0.875 (22) | 0.875 (22) | 19.50 | 150 |
| JY-AOS10H | 1 (25) | 1 (25) | 23.50 | 100 |

1 / 2 INCH DIAMETER

Minimum Tensile Strength: 3,500 Kg



| Catalog no. | Nominal Size(mm) | Thread per Inch (mm) | Approx. Weight (Kg./1100 Pcs.) | Standard Pkg. Qty. / Carton |
|-------------|------------------|----------------------|--------------------------------|-----------------------------|
| JY-A0638 | 3/8 (9) | 16 (400) | 7.90 | 1,000 |
| JY-A0612 | 1/2 (13) | 13 (325) | 8.80 | 1,000 |
| JY-A0658 | 5/8 (16) | 11 (275) | 9.90 | 1,000 |
| JY-A0634 | 3/4 (19) | 10 (250) | 10.80 | 1,000 |

LAG SCREW

As all thread bolts go through the pole, the two ends of the double arming bolt will be locked and secured by nut and washer.



| Catalog no. | Diameter | Bolt length Inch(mm) | Thread Length Inch(mm) | Approx. Weight (Kg./1100 Pcs.) | Standard Pkg. Qty. /Carton |
|-------------|----------|-------------------------|---------------------------|-----------------------------------|-------------------------------|
| JY-A0712G3 | 1/2 | 3 (75) | 2 (50) | 8.50 | 350 |
| JY-A0712G4 | 1/2 | 4 (100) | 2-1/2 (63) | 10.80 | 250 |
| JY-A0712G5 | 1/2 | 5 (125) | 3 (75) | 12.60 | 250 |

FETTER DRIVE REGULAR POINT

| Catalog no. | Diameter | Bolt length Inch(mm) | Thread Length Inch(mm) | Approx. Weight (Kg./1100 Pcs.) | Standard Pkg. Qty. /Carton |
|-------------|----------|-------------------------|---------------------------|-----------------------------------|-------------------------------|
| JY-A0712F3 | 1/2 | 3 (75) | 2 (50) | 8.60 | 350 |
| JY-A0712F4 | 1/2 | 4 (100) | 2-1/2 (63) | 10.80 | 250 |
| JY-A0712FS | 1/2 | 5 (125) | 3 (75) | 12.70 | 250 |
| JY-A0758FS | 5/8 | 5 (125) | 3 (75) | 20.00 | 250 |

WASHERS

Hot Dip Galvanized



ROUND WASHER

| Catalog no. | Outside Diameter(Inch) | Thickness | Hole Diameter(Inch) | For Bolt Diameter(Inch) | Approx. Weight (Kg./1100 Pcs.) | Standard Pkg. Qty. /Carton |
|-------------|---------------------------|-----------|------------------------|----------------------------|-----------------------------------|-------------------------------|
| JY-A0838R | 1 | 14 | 7/16 | 3/8 | 0.93 | 0.93 |
| JY-A0838R1 | 1-1/4 | 14 | 9/16 | 3/8 | 1.52 | 1.52 |
| JY-A0812R | 1-3/8 | 12 | 9/16 | 1/2 | 2.00 | 2.00 |
| JY-A0858R | 1-3/4 | 10 | 11/16 | 5/8 | 4.00 | 4.00 |
| JY-A0834R | 2 | 9 | 13/16 | 3/4 | 5.10 | 5.10 |

SQUARE WASHER

As all thread bolts go through the pole, the two ends of the double arm-
ing bolt will be locked and secured by nut and washer.



| Catalog no. | Size(Inch) | Hole Diameter (Inch) | For Bolt Diameter(Inch) | Approximately Weight (Kg./100 Pcs.) | Standard Pkg. Qty. /Carton |
|-------------|----------------------|-------------------------|-----------------------------|---|-------------------------------|
| JY-A08F2-01 | 2 X 2 X 1/8 | 9/16 | 1/2 | 5.70 | 400 |
| JY-A08F2-02 | 2 X 2 X 1/8 | 11/16 | 5/8 | 5.40 | 400 |
| JY-A08F2-03 | 2 X 2 X 3/16 | 11/16 | 5/8 | 8.10 | 400 |
| JY-A08F2-04 | 2 X 2 X 3/16 | 13/16 | 3/4 | 7.90 | 400 |
| JY-A08F2-05 | 2-1/2 X 2-1/2 X 3/16 | 11/16 | 5/8 | 14.00 | 300 |
| JY-A08F2-06 | 2-1/2 X 2-1/2 X 3/16 | 13/16 | 3/4 | 13.50 | 300 |
| JY-A08F2-07 | 2-1/4 X 2-1/4 X 3/16 | 11/16 | 5/8 | 11.00 | 300 |

| Catalog no. | Size(Inch) | Hole Diameter (Inch) | For Bolt Diameter(Inch) | Approximately Weight (Kg./100 Pcs.) | Standard Pkg. Qty. /Carton |
|-------------|----------------------|----------------------|--------------------------|-------------------------------------|----------------------------|
| A08F2-08 | 2-1/4 X 2-1/4 X 3/16 | 13/16 | 3/4 | 10.60 | 300 |
| JY-A08F3-01 | 3 X 3 X 3/16 | 11/16 | 5/8 | 19.50 | 150 |
| JY-A08F3-02 | 3 X 3 X 3/16 | 13/16 | 3/4 | 19.20 | 150 |
| JY-A08F4-01 | 4 X 4 X 1/4 | 11/16 | 5/8 | 47.00 | 450 |
| JY-A08F4-02 | 4 X 4 X 1/4 | 13/16 | 3/4 | 46.60 | 450 |
| JY-A08F4-03 | 4 X 4 X 1/2 | 11/16 | 5/8 | 94.00 | 450 |
| JY-A08F4-04 | 4 X 4 X 1/2 | 13/16 | 3/4 | 93.40 | 450 |
| JY-A08F4-05 | 4 X 4 X 3/16 | 11/16 | 5/8 | 34.48 | 450 |
| JY-A08F4-06 | 4 X 4 X 3/16 | 13/16 | 3/4 | 34.15 | 450 |

SQUARE WASHER

As all thread bolts go through the pole, the two ends of the double arming bolt will be locked and secured by nut and washer.



| Catalog no. | Size(Inch) | Hole Diameter (Inch) | For Bolt Diameter(Inch) | Approximately Weight (Kg./100 Pcs.) | Standard Pkg. Qty. /Carton |
|-------------|----------------------|----------------------|--------------------------|-------------------------------------|----------------------------|
| JY-A08C2-01 | 2 X 2 X 1/8 | 9/16 | 1/2 | 5.70 | 400 |
| JY-A08C2-02 | 2 X 2 X 1/8 | 11/16 | 5/8 | 5.40 | 400 |
| JY-A08C2-03 | 2 X 2 X 3/16 | 11/16 | 5/8 | 8.10 | 400 |
| JY-A08C2-04 | 2 X 2 X 3/16 | 13/16 | 3/4 | 7.90 | 400 |
| JY-A08C2-05 | 2-1/2 X 2-1/2 X 3/16 | 11/16 | 5/8 | 14.00 | 300 |
| JY-A08C2-06 | 2-1/2 X 2-1/2 X 3/16 | 13/16 | 3/4 | 13.50 | 300 |
| JY-A08C2-07 | 2-1/4 X 2-1/4 X 3/16 | 11/16 | 5/8 | 11.00 | 300 |
| JY-A08C2-08 | 2-1/4 X 2-1/4 X 3/16 | 13/16 | 3/4 | 10.60 | 300 |
| JY-A08C3-01 | 3 X 3 X 3/16 | 11/16 | 5/8 | 19.50 | 150 |
| JY-A08C3-02 | 3 X 3 X 3/16 | 13/16 | 3/4 | 19.20 | 150 |
| JY-A08C4-01 | 4 X 4 X 1/4 | 11/16 | 5/8 | 47.00 | 450 |
| JY-A08C4-02 | 4 X 4 X 1/4 | 13/16 | 3/4 | 46.60 | 450 |
| JY-A08C4-03 | 4 X 4 X 1/2 | 11/16 | 5/8 | 94.00 | 450 |
| JY-A08C4-04 | 4 X 4 X 1/2 | 13/16 | 3/4 | 93.40 | 450 |
| JY-A08C4-05 | 4 X 4 X 3/16 | 11/16 | 5/8 | 34.48 | 450 |
| JY-A08C4-06 | 4 X 4 X 3/16 | 13/16 | 3/4 | 34.15 | 450 |

SPRING LOCK WASHER

The spring washer is assembled with the bolt and nut. The spring washer makes the fastening more tightly.



| Catalog no. | Size Section Inch | For Bolt Diameter(Inch) | Approx. Weight (Kg./1100 Pcs.) | Standard Pkg. Qty. / Carton |
|-------------|-------------------|-------------------------|--------------------------------|-----------------------------|
| JY-A0938LW | 0.41X0.094 | 3/8 | 3.60 | 5,000 |
| JY-A0912LW | 0.171 X 0.125 | 1/2 | 5.00 | 3,500 |
| JY-A0958LW | 0.203 X 0.156 | 5/8 | 1.00 | 2,000 |
| JY-A0934LW | 0.234 X 0.188 | 3/4 | 1.40 | 1,250 |

OVAL EYE NUT

Oval eye nut are mainly designed for use on the threaded end of 1/2 or 5/8 inch machine bolts passed vertically through cross arm for attaching dead end clamp.



| Catalog no. | Bolt Diameter Inch | A | B | C | D | E | Weight kg/100pcs | Standard Packing Qty/Carton |
|-------------|--------------------|------|------|----|----|----|------------------|-----------------------------|
| JY-E1330-58 | 5/8 | 13.5 | 44.5 | 38 | 65 | 80 | 30.00 | 50 |
| JY-E1330-34 | 3/4 | 13.5 | 44.5 | 38 | 65 | 80 | 30.00 | 50 |

| Catalog no. | Bolt diameter Inch | Slotted HoleInch | A | B | C | D | Weight Kg/ 100pcs | Standard packing Qty/carton |
|-------------|--------------------|------------------|------|----|----|----|-------------------|-----------------------------|
| JY-E1410-58 | 5/8 | 17 X 25 | 13.5 | 77 | 16 | 58 | 52 | 50 |
| JY-E1410-34 | 3/4 | 21 X 26 | 13.5 | 77 | 16 | 58 | 52 | 50 |



THIMBLE EYE NUT

thimble eye nut are assembled with the thread end of 1/2 or 5/8 inch eye bolt, which go across the wooden pole for supporting the strain insulators to the dead end wire.

| Catalog no. | Bolt diameter Inch | Strand Size Inch | Weight/100pcs | Standard package Qty/ Carton |
|-------------|--------------------|------------------|---------------|------------------------------|
| JY-GOS31-58 | 5/8 | 1/2 | 40.00 | 100 |
| JY-G0531-34 | 3/4 | 1/2 | 40.00 | 100 |



THIMBLE EYE NUT



| Catalog no. | Bolt Diameter Inch | Strand Size Inch | Weight/100pcs | Standard package Qty/ Carton |
|-------------|--------------------|------------------|---------------|------------------------------|
| JY-GOS32-58 | 5/8 | 1/2 | 83.50 | 30 |
| JY-G0532-34 | 3/4 | 1/2 | 79.10 | 30 |

EYE LET

The surface treatment of the eye nut is hot dip galvanization. The required mark and the size 5/8 or 3/4 appear on the bottom of the eye nut.

| Catalog no. | Bolts Diameter Inch | Strand size Inch | Weight/100pcs | Standard packing Qty/Carton |
|------------------|---------------------|------------------|---------------|-----------------------------|
| JY-G0950 - 58 | 5/8 | 1/2 | 60 | 50 |
| JY-G0950 0-50 34 | 3/4 | 1/2 | 60 | 50 |



STRAIGHT THIMBLE EYELET

| Catalog no. | Bolts Diameter Inch | Strand size Inch | Weight/100pcs | Standard packing Qty/ Carton |
|------------------|---------------------|------------------|---------------|------------------------------|
| JY-G0950 - 58 | 5/8 | 1/2 | 60 | 50 |
| JY-G0950 0-50 34 | 3/4 | 1/2 | 60 | 50 |

OVAL EYE BOLT

oval eye bolt is widely used on the wooden pole to connect the dead-end insulator in electric power line or overhead line. Jing Young oval eye bolt is designed with an over thimble head which is a locked circle, when connected with the clevis or dead-end insulator.



| Catalog no. | A | B | C | D | L | T | Weight kg/ 100pcs | Standard packing Qty/ carton |
|-------------|-----|-------|---|-----|----|---|-------------------|------------------------------|
| JY-E1504-08 | 5/8 | 1-1/2 | 2 | 5/8 | 8 | 4 | 66.00 | 35 |
| JY-E1504-10 | 5/8 | 1-1/2 | 2 | 5/8 | 10 | 6 | 69.50 | 30 |
| JY-E1504-12 | 5/8 | 1-1/2 | 2 | 5/8 | 12 | 6 | 78.50 | 30 |
| JY-E1505-08 | 3/4 | 1-1/2 | 2 | 3/4 | 8 | 4 | 96.50 | 30 |
| JY-EISOS-10 | 3/4 | 1-1/2 | 2 | 3/4 | 10 | 6 | 105.50 | 20 |
| JY-EISOS-12 | 3/4 | 1-1/2 | 2 | 3/4 | 12 | 6 | 114.50 | 25 |

THIMBLE EYE BOLT

thimble eye bolt is designed to connect the dead end guy grip or attaching the guy wires to pole or concrete line.



| Catalog no. | weight/Pcs | Stock No. | D | L | T | Thread Per Inch | Standard Package Qty/ Carton |
|-------------|------------|-----------|-----|----|---|-----------------|------------------------------|
| JY-G0650-08 | 52.50 | G0652-08 | 5/8 | 8 | 4 | 11 | 30 |
| JY-G0650-10 | 55.00 | G0652 -10 | 5/8 | 10 | 4 | 11 | 30 |
| JY-G0650-12 | 65.00 | G0652-12 | 5/8 | 12 | 6 | 11 | 30 |
| JY-G0650-14 | 70.00 | G0652-14 | 5/8 | 14 | 6 | 11 | 30 |
| JY-G0650-16 | 77.00 | G0652-16 | 5/8 | 16 | 6 | 11 | 30 |
| JY-G0651-10 | 80.00 | G0653 -10 | 3/4 | 10 | 4 | 10 | 25 |
| JY-G0651-12 | 90.00 | G0653 -12 | 3/4 | 12 | 6 | 10 | 25 |
| JY-G0651-14 | 100.00 | G0653-14 | 3/4 | 14 | 6 | 10 | 25 |
| JY-G0651-16 | 113.00 | G0653 -16 | 3/4 | 16 | 6 | 10 | 25 |

SPOOL BOLT

SINGLE UPSET BOLT 5/8"

| Catalog no. | L | A | B | Weight/100pcs | Standard package quantity /carton |
|-------------|----|--------|---|---------------|-----------------------------------|
| JY-F0110-08 | 8 | 12-1/2 | 4 | 63.00 | 35 |
| JY-F0110-09 | 9 | 13-1/3 | 4 | 68.00 | 30 |
| JY-F0110-10 | 10 | 14-1/2 | 4 | 60.00 | 30 |
| JY-F0110-12 | 12 | 16-1/2 | 6 | 80.00 | 30 |
| JY-F0110-14 | 14 | 18-1/2 | 6 | 90.00 | 35 |

DOUBLE UPSET BOLT 5/8"

| Catalog no. | L | A | B | Weight/100pcs | Standard package quantity /carton |
|--------------|----|----|---|---------------|-----------------------------------|
| JY-F011t -08 | 8 | 14 | 4 | 73.00 | 30 |
| JY-F0111-09 | 9 | 15 | 4 | 77.00 | 30 |
| JY-F011t-10 | 10 | 16 | 4 | 65.00 | 35 |
| JY-F011t-12 | 12 | 18 | 6 | 72.00 | 35 |
| JY-F011t-14 | 14 | 20 | 6 | 80.00 | 35 |

