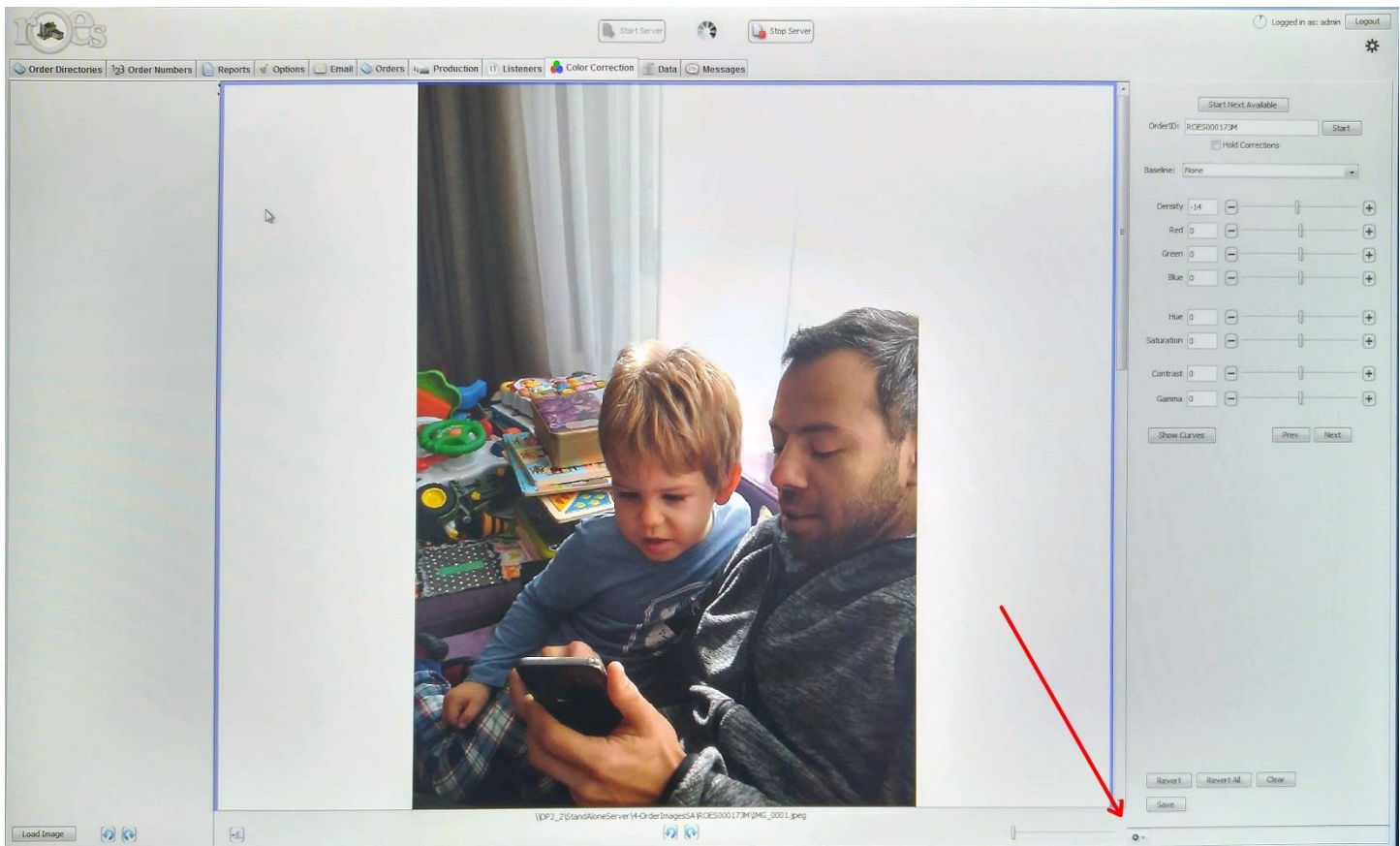


# ROES Server Controller Keyboard Setup

1. Connect the USB cable between a USB port on your PC and the controller box. Windows should automatically detect the device and install it. This device will work in parallel with your main keyboard.
2. Before moving forward be sure the controller works correctly. Open a text editor on your PC and test the wheels by pressing Enter, Next and Previous buttons to see if the controller generates keyboard characters.
3. Open ROES Server, right click on an order and press color correct now to activate the color correction module.
4. Press the setting button on the bottom right of screen.



5. Press set key mappings.

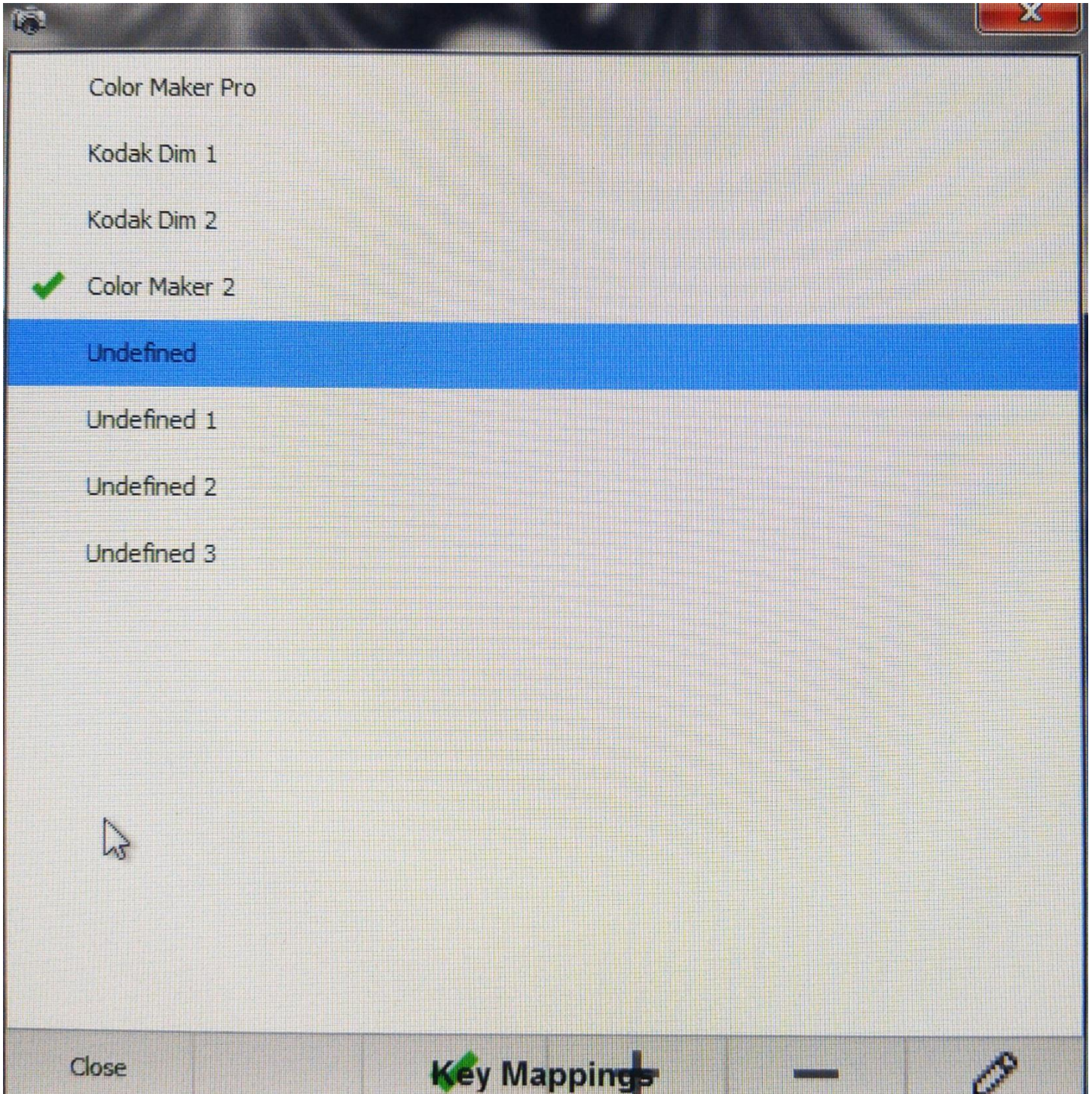




6. Press Key Mappings + button to add an “Undefined” controller



7. Select the “Undefined” and press edit key





8. Assign a name for the controller and the following keyboard characters shortcuts:

The screenshot shows a window titled 'Edit Key Mapping' for a device named 'Color Maker 2'. The window is divided into several sections for assigning keyboard shortcuts to various functions.

**Name:** Color Maker 2

Decrement		Increment			
b	Brightness	a		Next	x
f	Red	e		Previous	y
i	Green	j		Mode	u
n	Blue	m			
k	Hue	l			
h	Saturation	g			
d	Contrast	c			
p	Gamma	o			

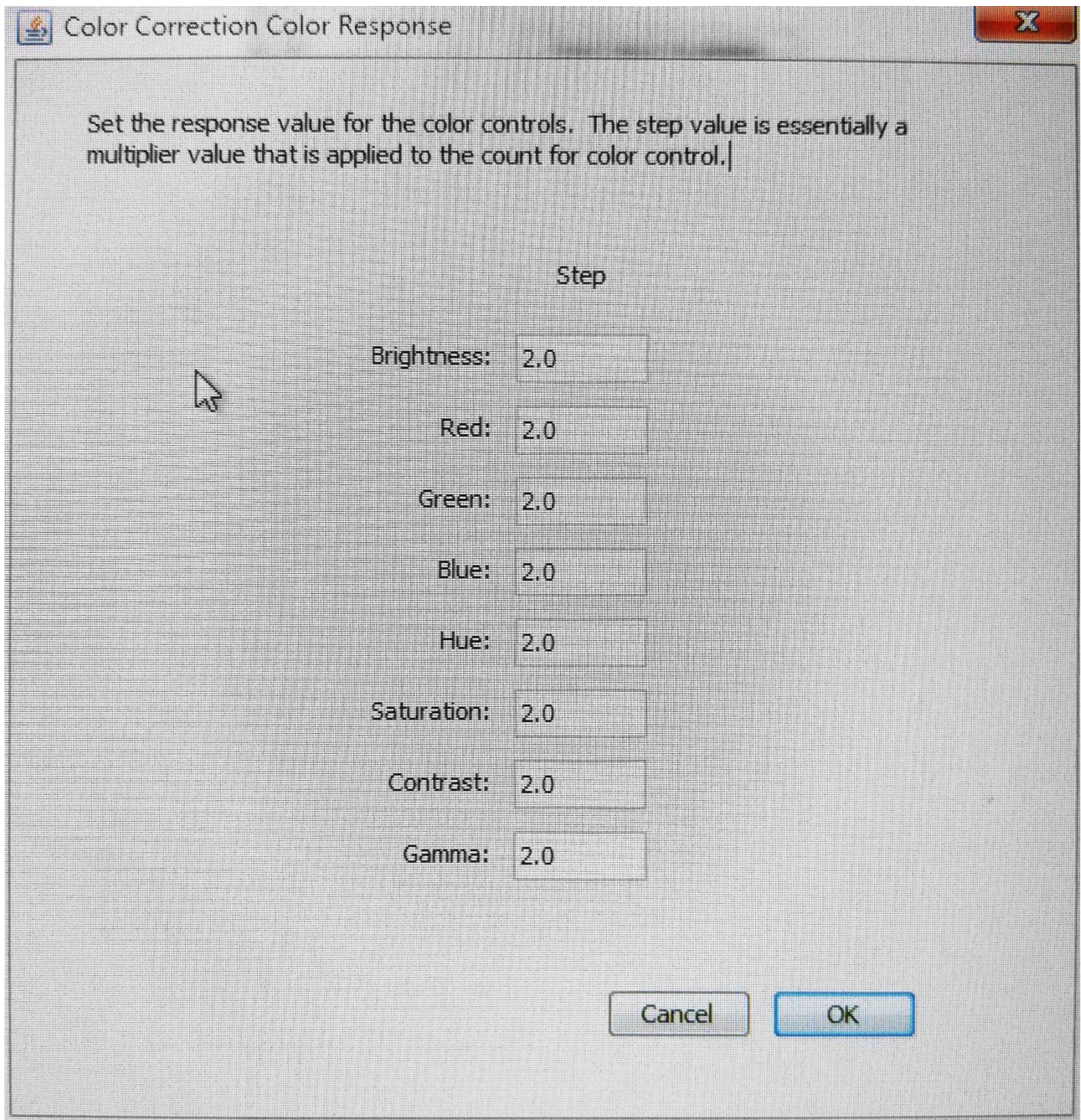
Mode switches to: Color Maker 2

**Save** **Edit Key Mapping**

9. Press save and close all windows.

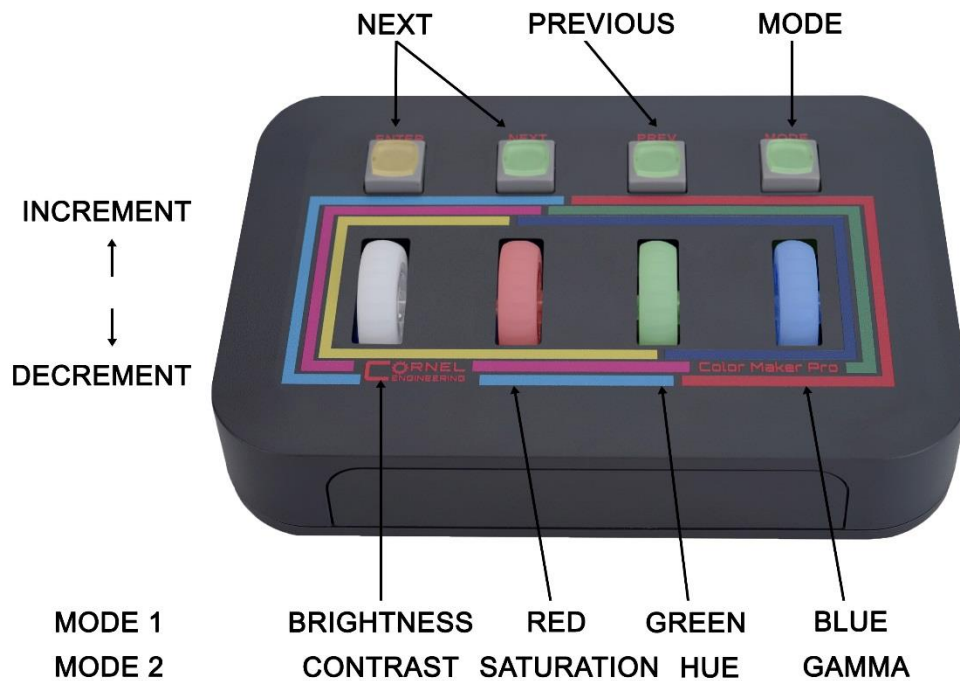
10. Click again on setup button  and select set color response.





11. Set all the response values to 2.0 and press OK. Device is now ready for use.





Press Mode button once to toggle between Mode 1 and 2. Button light is **OFF** for Mode 1 and **ON** for Mode 2

