

Typical Inst.	Texture
	G635 R7710

**Light**

- Altman 6in Fres @ 750w
- Altman 360Q 6x9 @ 750w
- Altman 360Q 6x12 @ 750w
- ETC CE Source4 Jr 36deg @ 575w
- ETC CE Source4 Jr 50deg @ 575w
- ETC ColorSource Spot 26deg @ 160w
- ETC Source4 36deg @ 575w
- ETC Source4 Jr 36deg @ 575w
- ETC Source4 Jr 50deg @ 575w

**Moving Light**

- Chauvet DJ Intimidator Spot 260 @ 107 w
- ChauvetDJ Colorband Pix-M USB @ 108 w

**Static Accessory**

- 7.5in 4 Leaf Barn Door
- Light Instr ETC ColorSource PAR WO

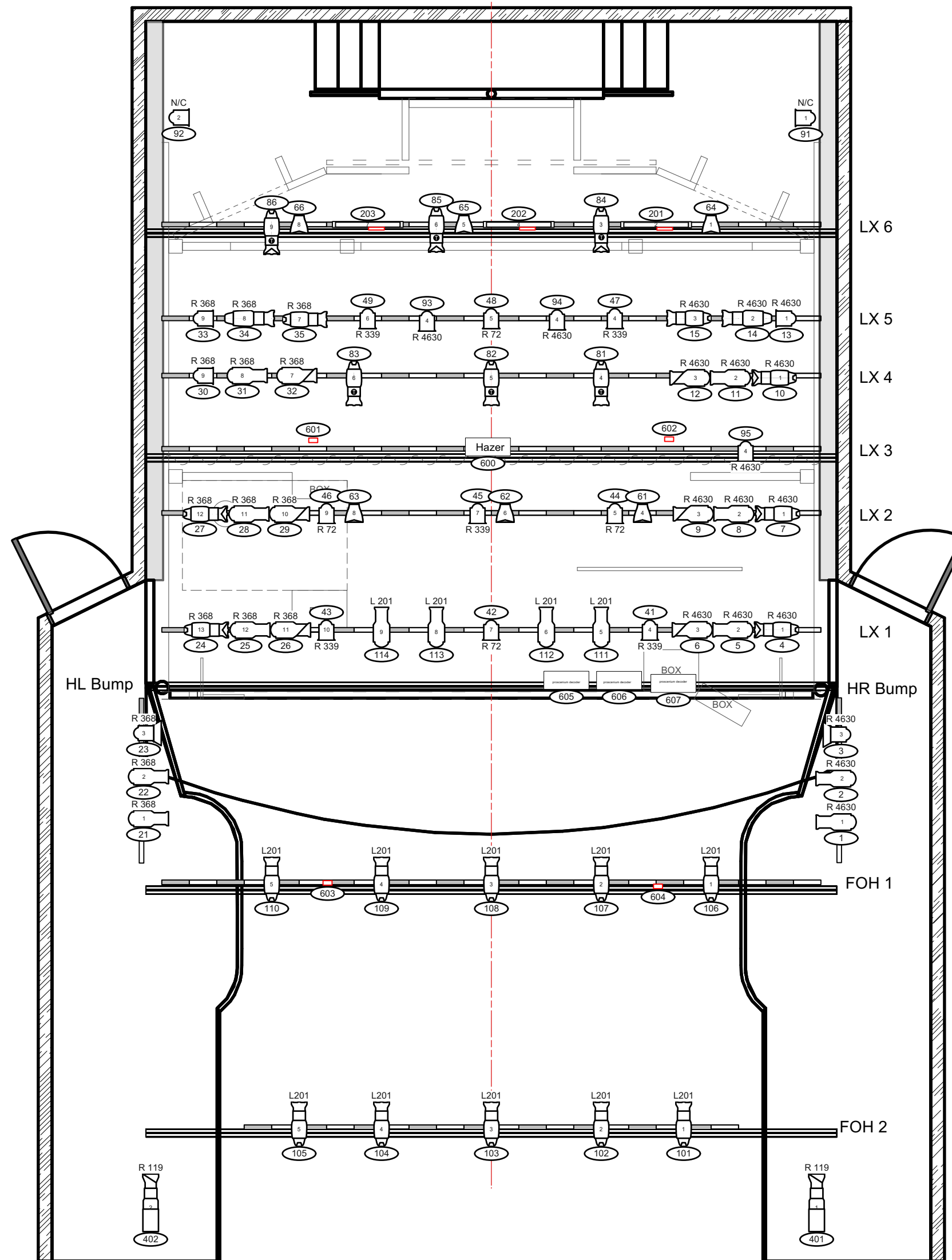
**No 2D Preview**

- C Clamp
- Template

**Typical**

**Color Summary**

Color	Size	Count
L 201	7.5"	4
L201	6.25"	10
N/C	7.5in	2
R 72	7.5in	4
R 119	6.25"	2
R 339	7.5in	5
R 368	7.5"	4
R 368	6.25"	8
R 368	Altman 6in Fres	1
R 368	7.5in	2
R 4630	7.5in	4
R 4630	7.5"	2
R 4630	Altman 6in Fres	1
R 4630	6.25"	11



**Revision Dates:**

- 04/24/22 Original Drafting Date by James Davis
- 07/08/22 Adjustments for WS by Sterling Matthew Oliver

**Notes**

- May play with some colors based on what's in inventory in the Gobos after F/H
- Not all decoders are placed here, will continue down the chain of 60X for channels - starting with 605 at proscenium
- Movers on LX3 are 155s
- Movers on FOH 2 are 255s
- Chan. 93 & 94 on LX3 (pointing at platform) may need other placement - check during F/H (these & 95 for the stairs are also the only added fixtures besides dimmer packs & hazer)

**Production Staff:**

Director: James Beaudry  
 Light Designer: Sterling Matthew Oliver  
 ME: Ren Cassidy  
 SM: Patrick Johnson

**Disclaimer**

These drawings represent visual concepts and construction suggestions only. The Designer and his or her employees are unqualified to determine the structural appropriateness of this design and will not assume responsibility for improper engineering, construction, or handling. All materials, finishes, and construction must comply with the most stringent fire and safety codes as applicable. Written dimensions on drawings shall have authority over scaled dimensions. Contractors and manufacturers shall verify and be responsible for all dimensions and conditions on the job and shall inform this office of all variations from drawings prior to performing the work.

PLATE  
 1 of 1  
 Light Plot

Scale: 0'-1/4" = 1'-0"  
 Date: 07/08/2022