

# Victory

SERIES



**SKYLINE®**

## Victory Series

### Built For Our Homeowners with Pride.

Skyline® Homes Victory Series is designed with your market needs in mind. Competitively priced, the Victory series does not hold back on the materials, construction, quality or craftsmanship expected in a Skyline home.

*The Right Home at The Right Price.*

★★★★★  
Lifestory Research®

AMERICA'S  
MOST TRUSTED®

Manufactured Home Builder

2021-2025



M103J | Artist Rendering



M200J | Artist Rendering



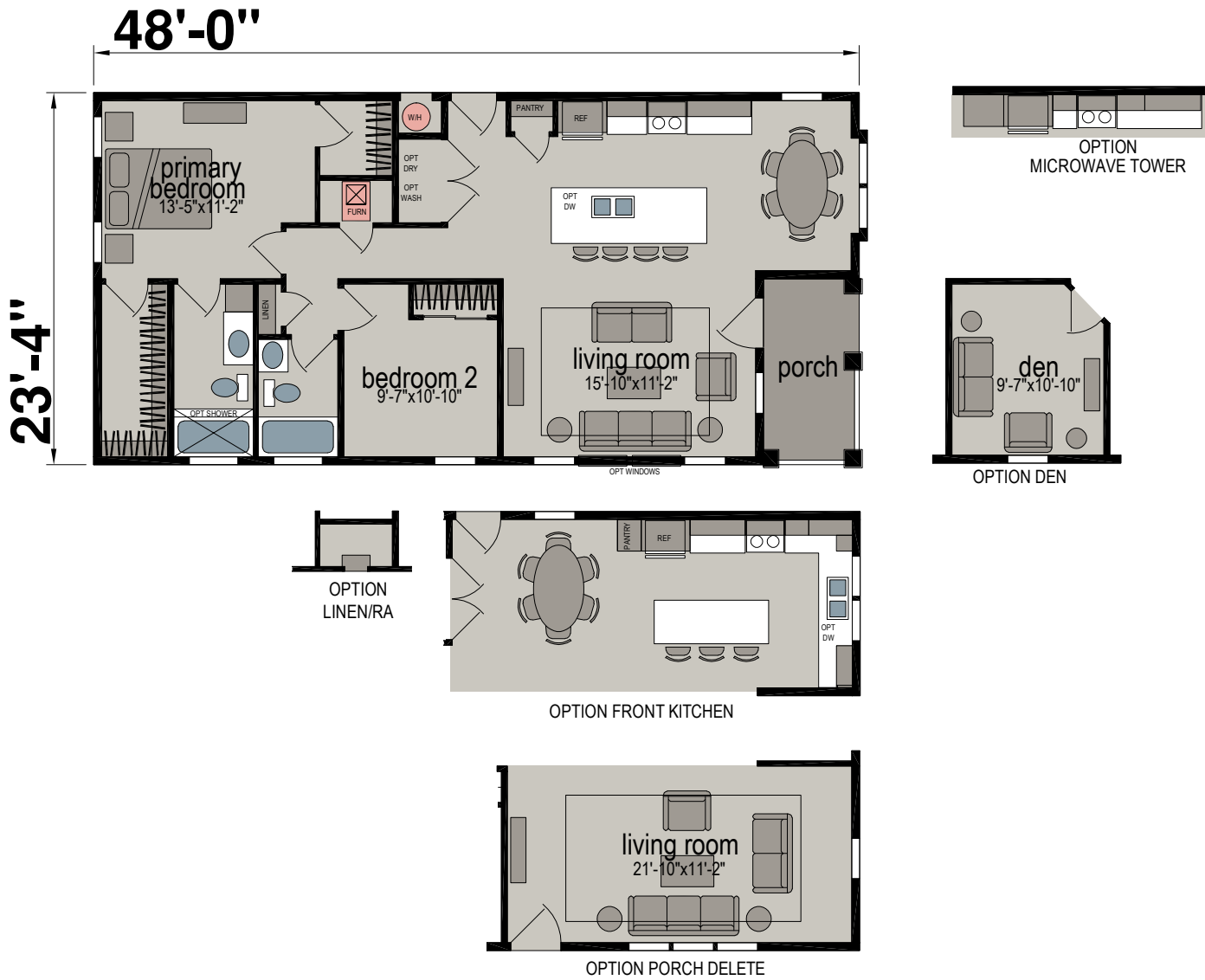
M201K | Artist Rendering

Skyline received the highest numerical score in the proprietary Lifestory Research 2021-2025 America's Most Trusted® Manufactured Home Builder Brand study. Study results are based on experiences and perceptions of people surveyed. Your experiences may vary. Visit [www.lifestoryresearch.com](http://www.lifestoryresearch.com).



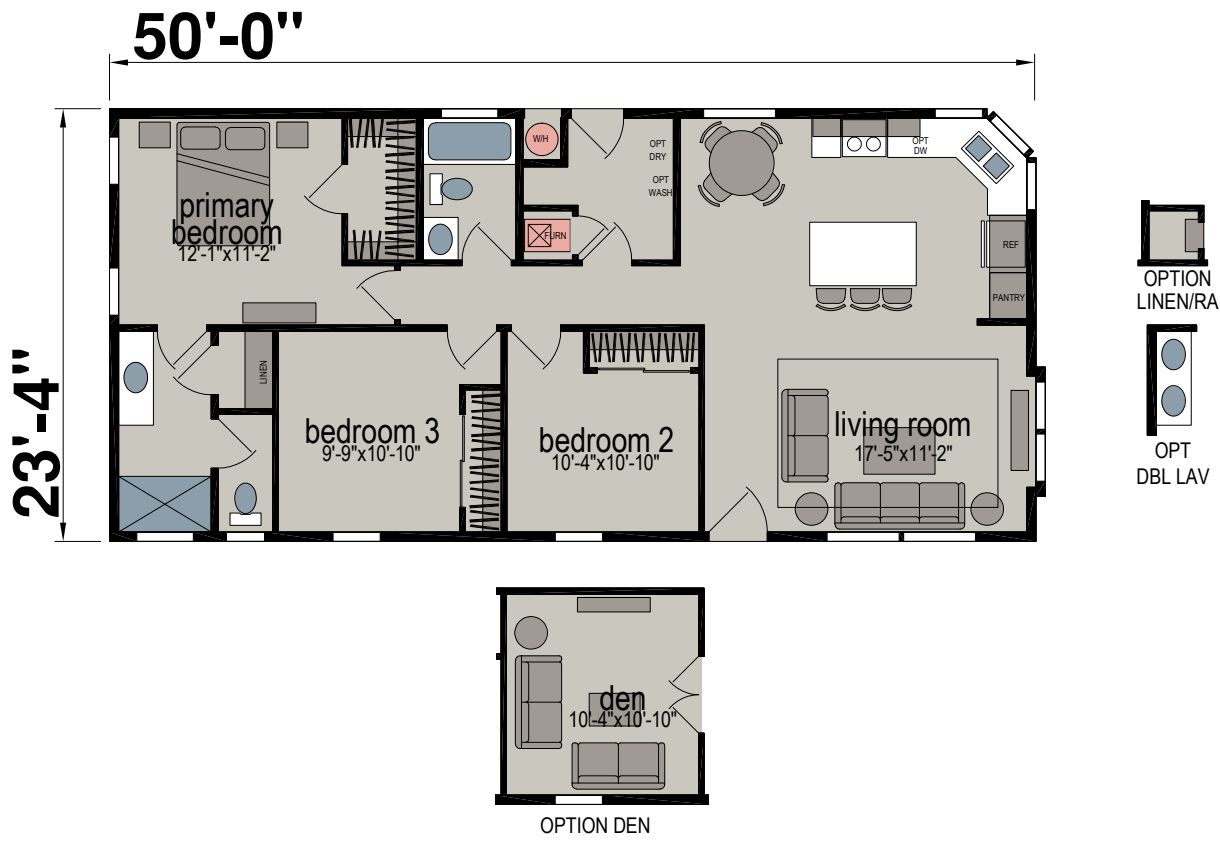
M103J

Two Bed | Two Bath | 1,053 Sq. Ft.



M105J

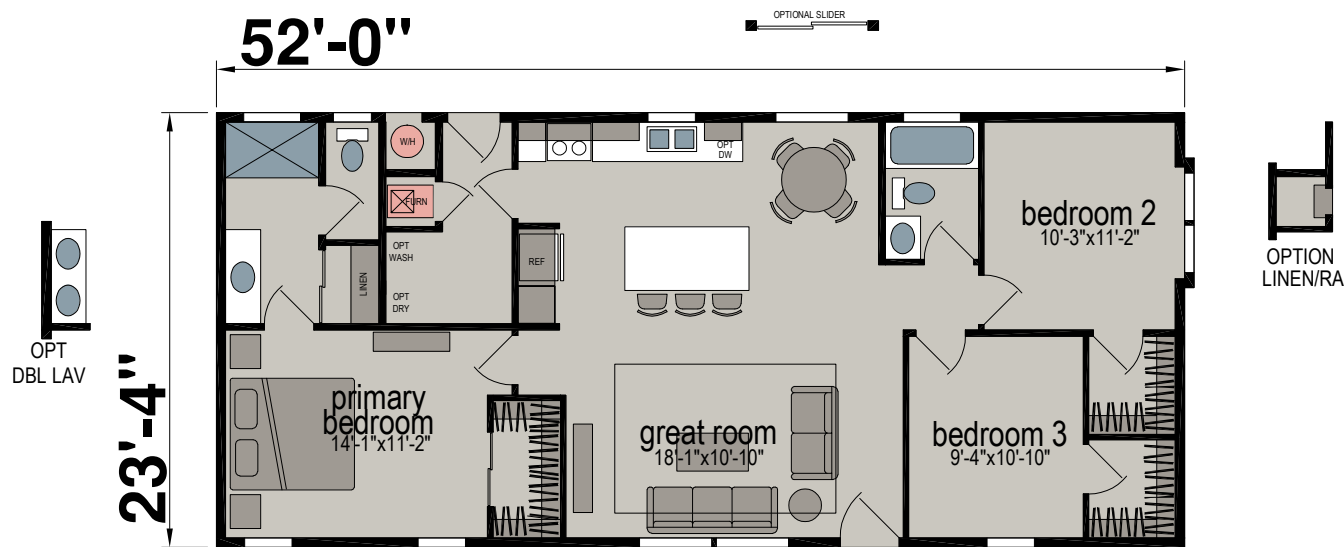
Three Bed | Two Bath | 1,167 Sq. Ft.





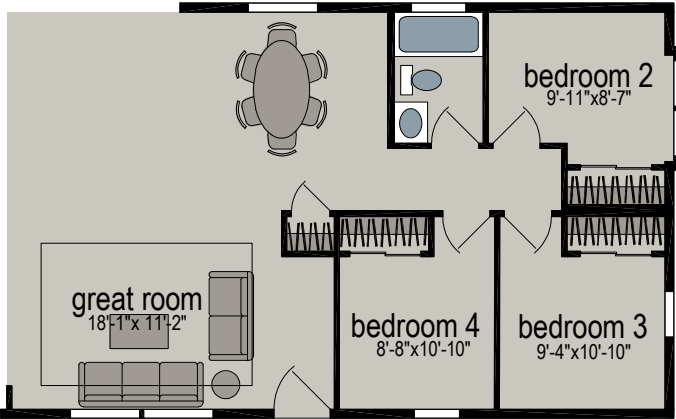
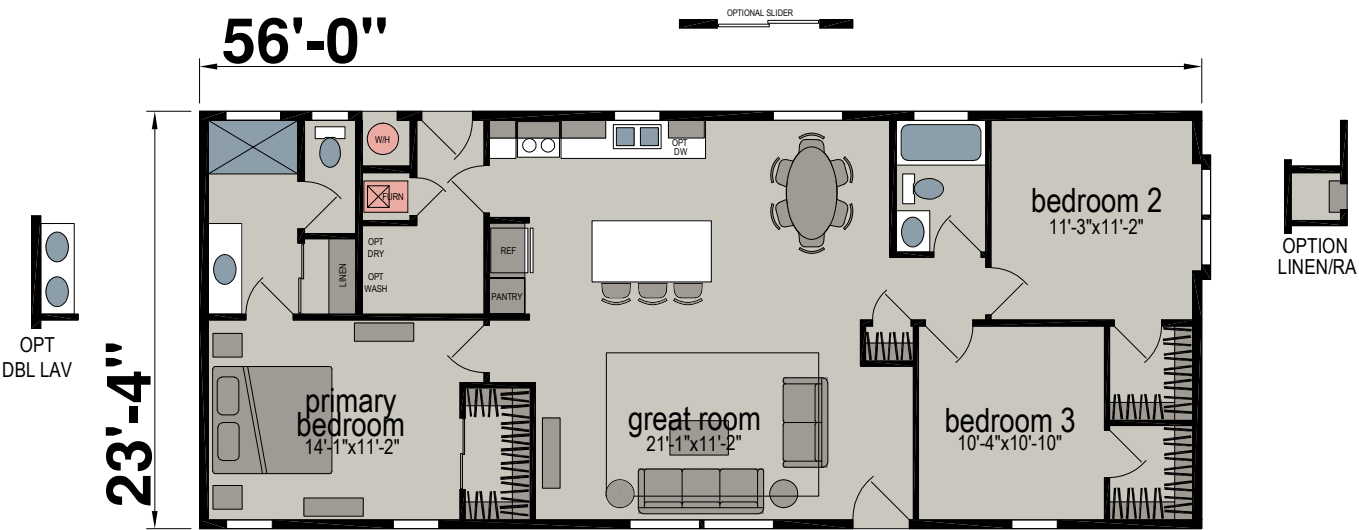
M100J

Three Bed | Two Bath | 1,216 Sq. Ft.



M100K

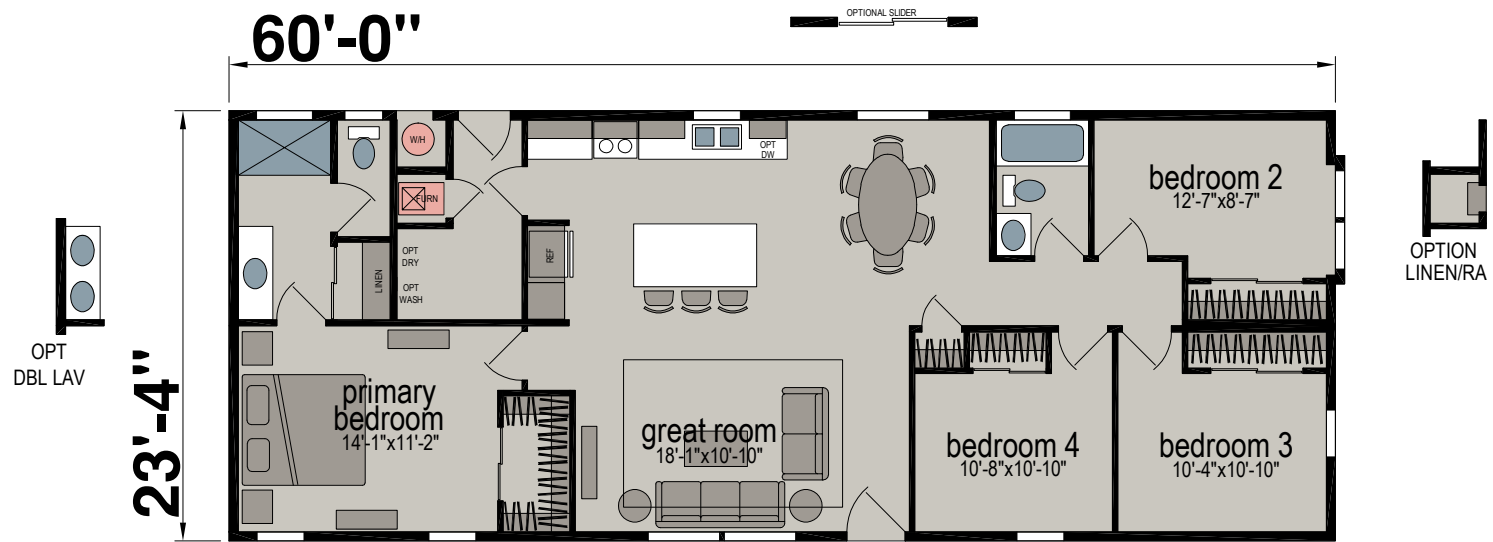
Three Bed | Two Bath | 1,310 Sq. Ft.



OPTION 4TH BEDROOM

## M100L

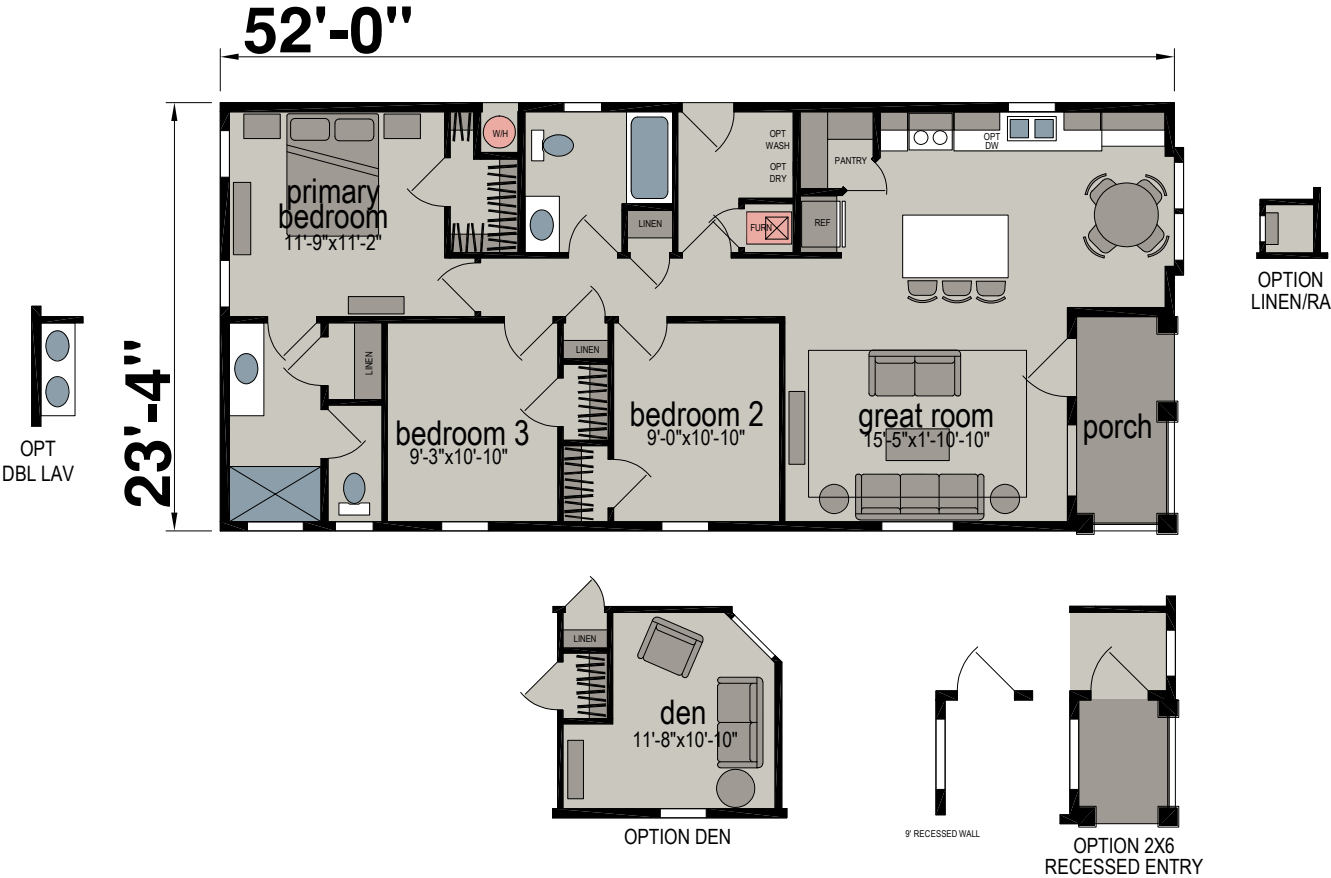
Four Bed | Two Bath | 1,403 Sq. Ft.





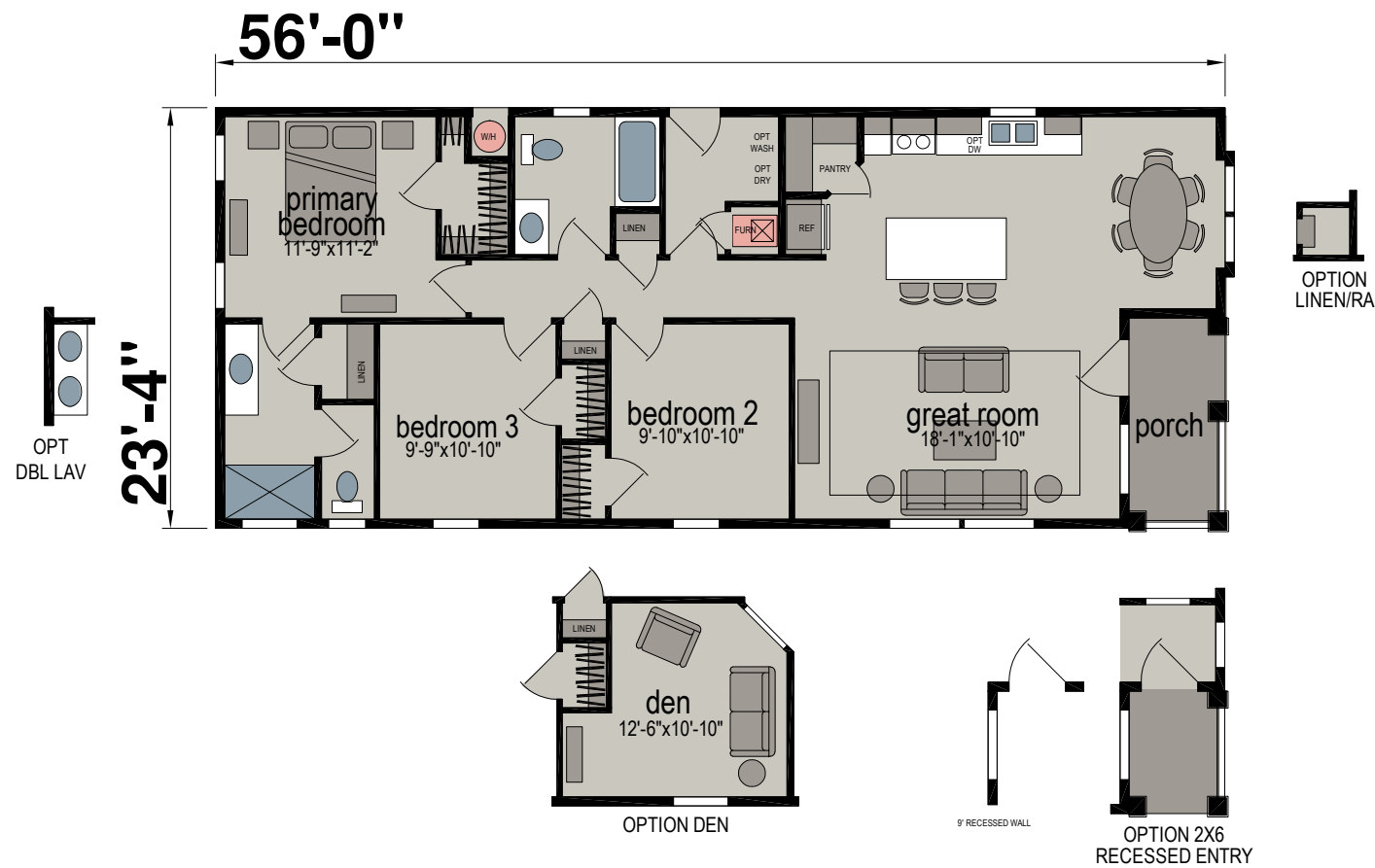
M101J

Three Bed | Two Bath | 1,154 Sq. Ft.



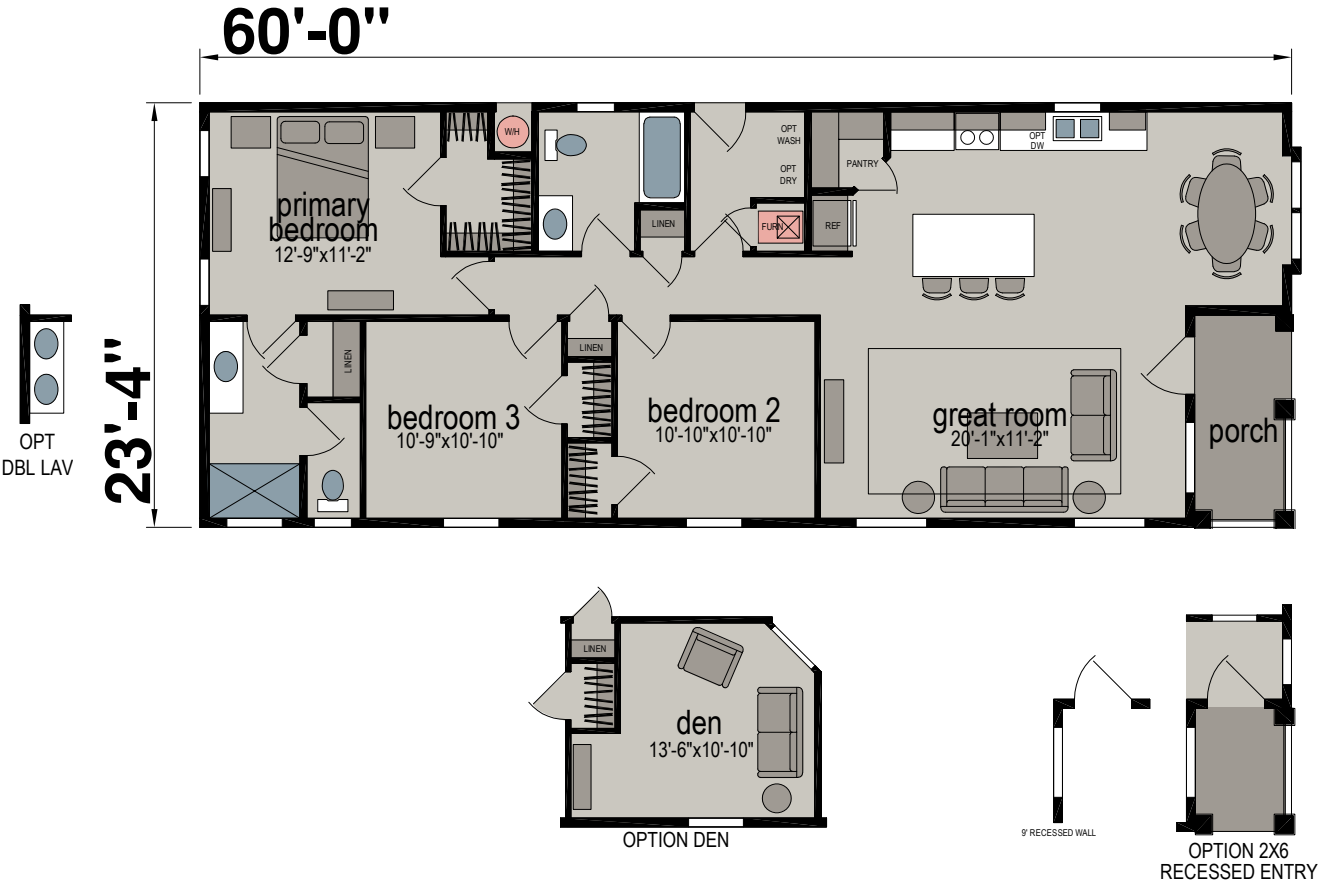
M101K

Three Bed | Two Bath | 1,247 Sq. Ft.



M101L

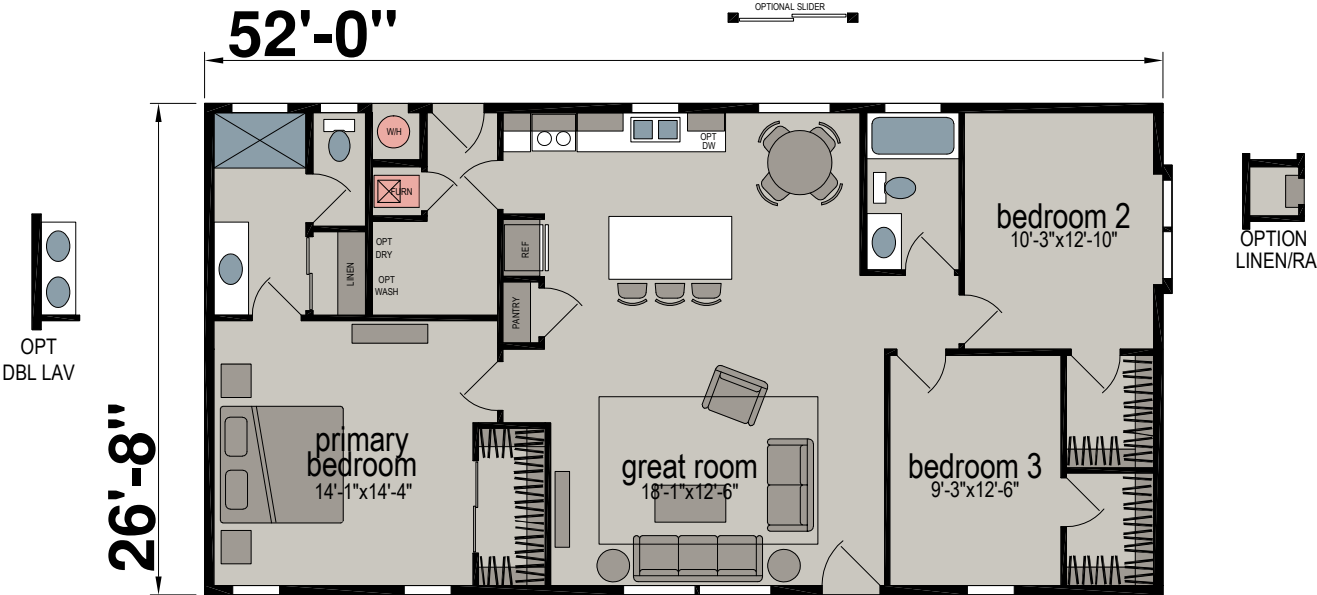
Three Bed | Two Bath | 1,341 Sq. Ft.





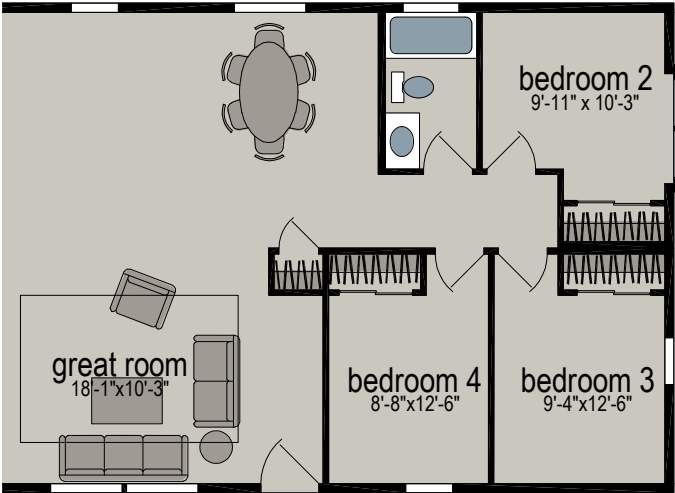
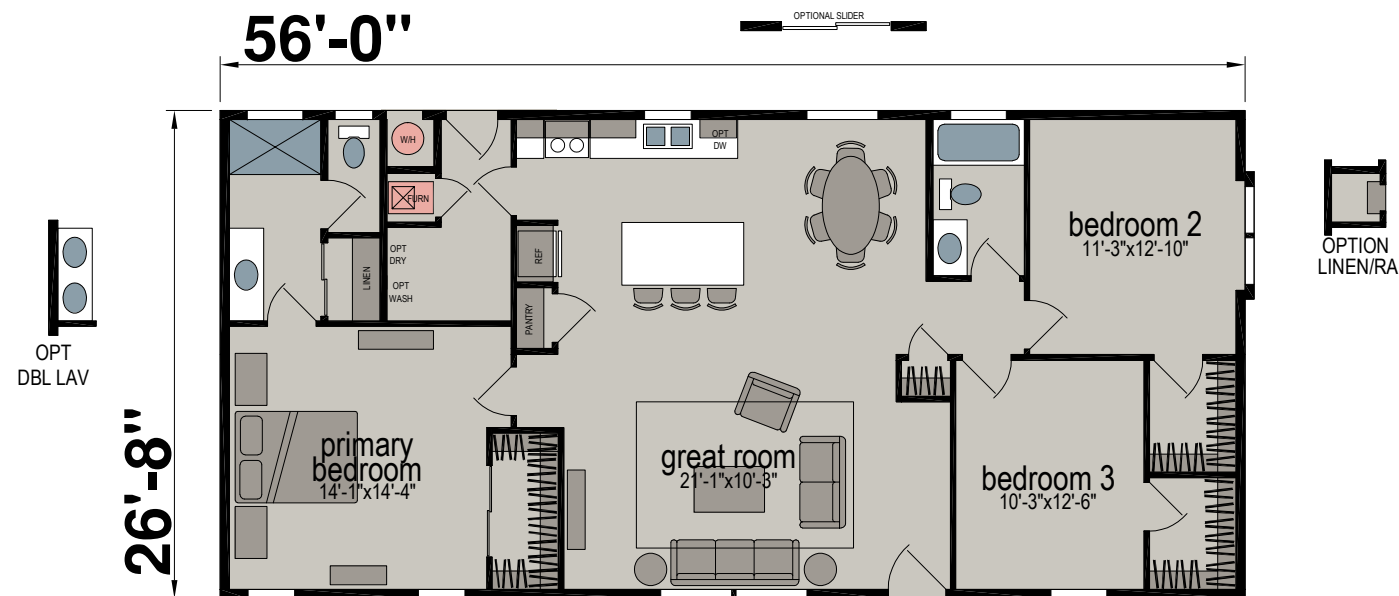
M200J

Three Bed | Two Bath | 1,390 Sq. Ft.



M200K

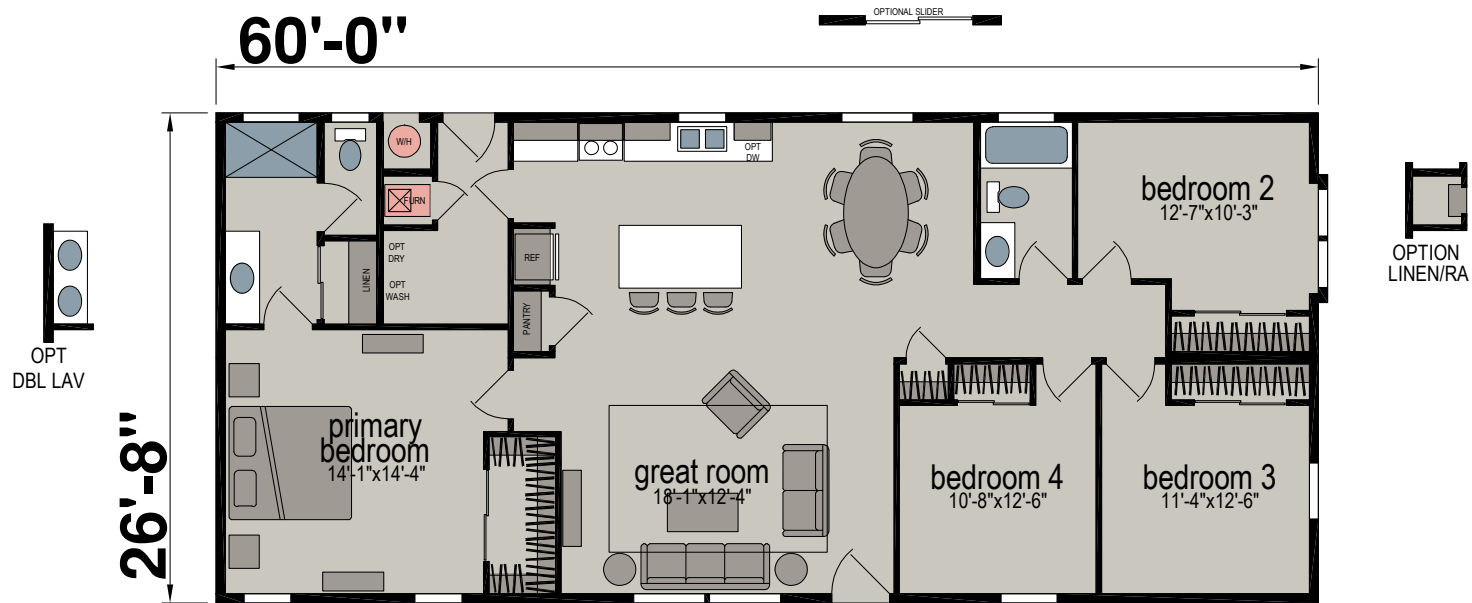
Three Bed | Two Bath | 1,496 Sq. Ft.



OPTION 4TH BEDROOM

## M200L

Four Bed | Two Bath | 1,603 Sq. Ft.





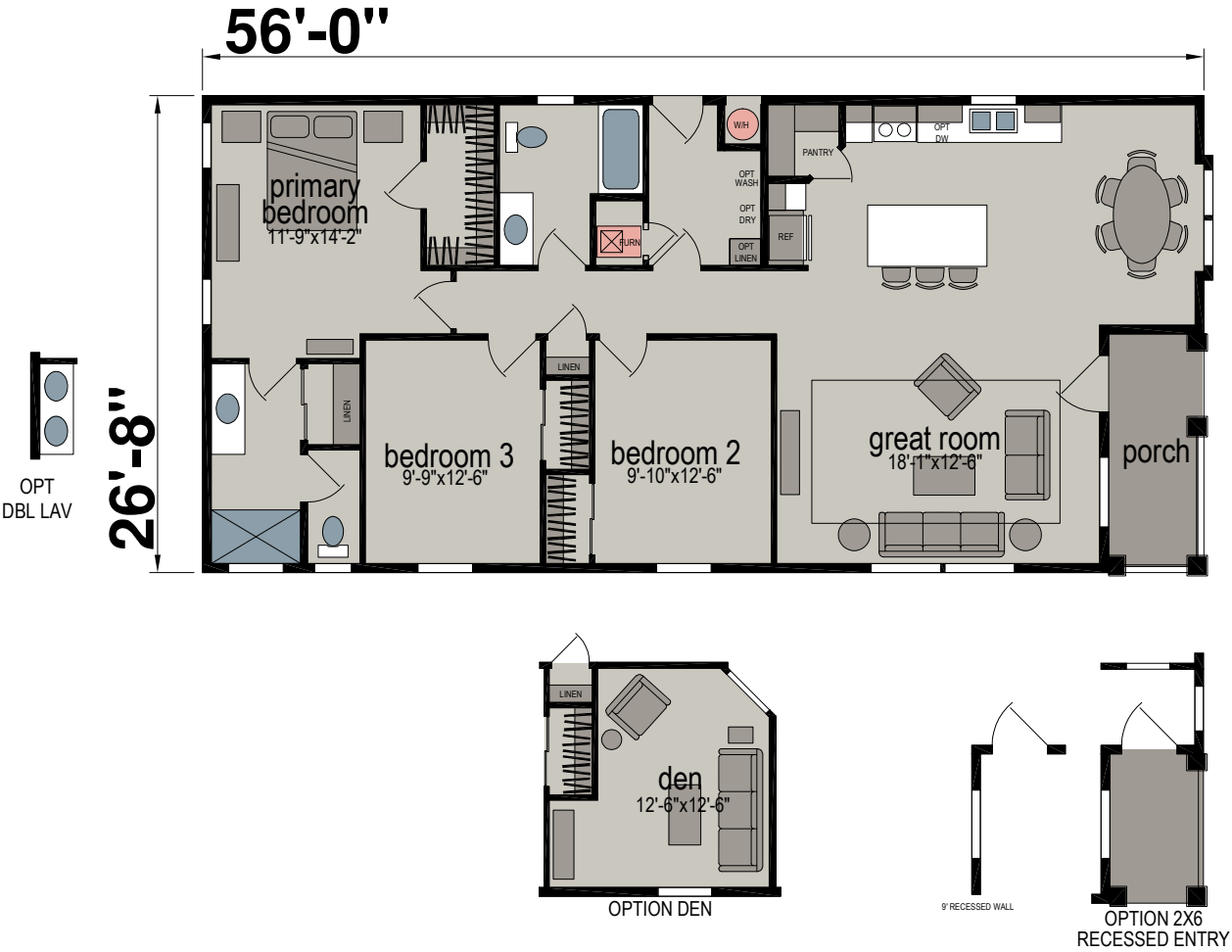
M201J

Three Bed | Two Bath | 1,319 Sq. Ft.



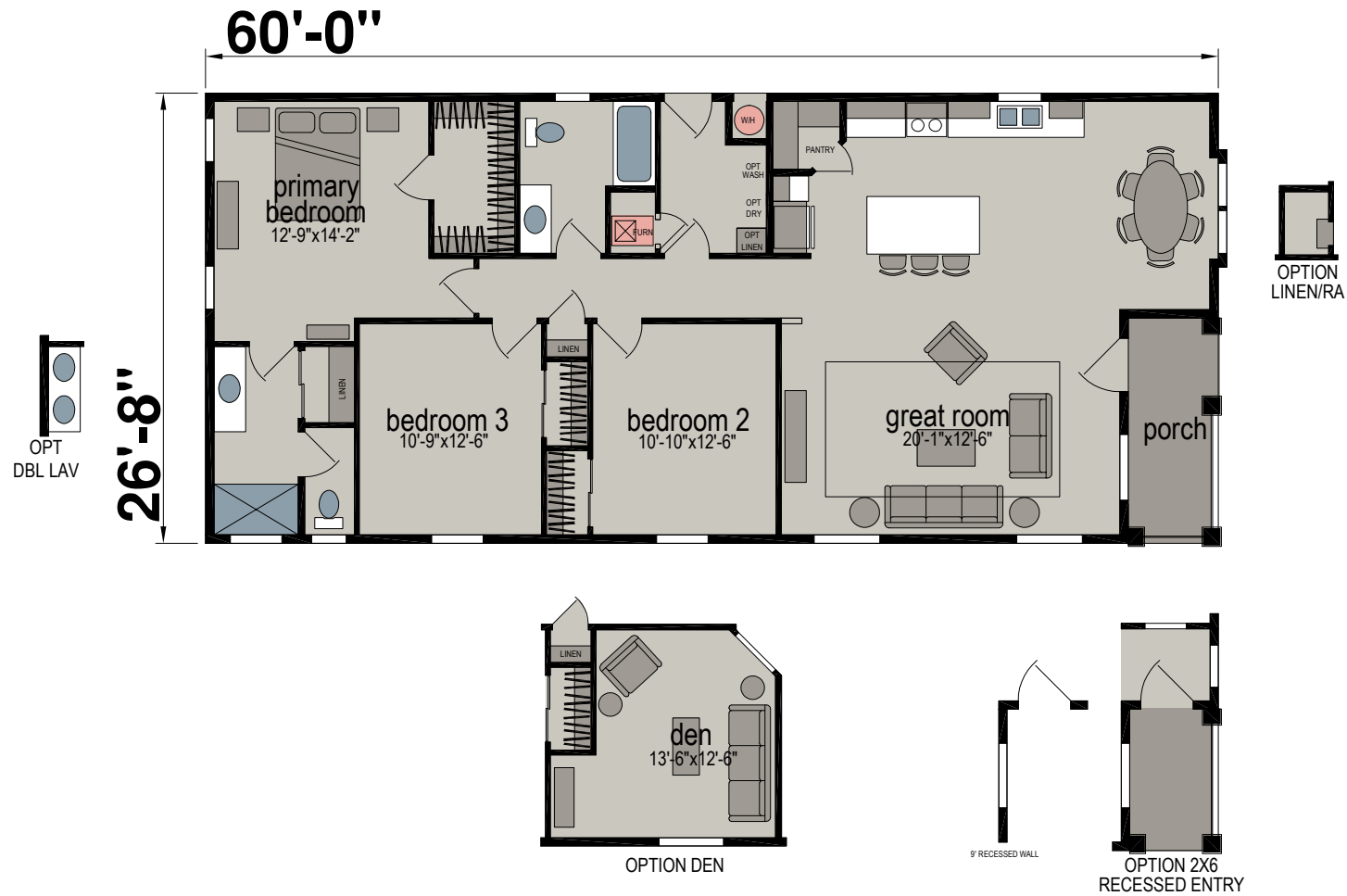
M201K

Three Bed | Two Bath | 1,425 Sq. Ft.



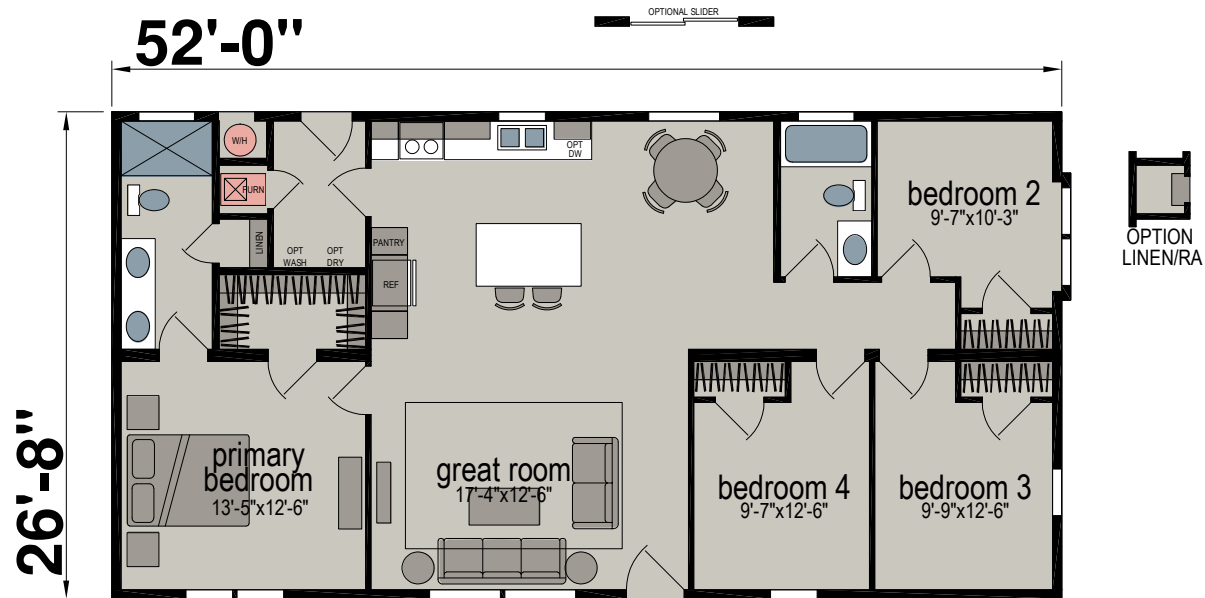
## M201L

Three Bed | Two Bath | 1,532 Sq. Ft.



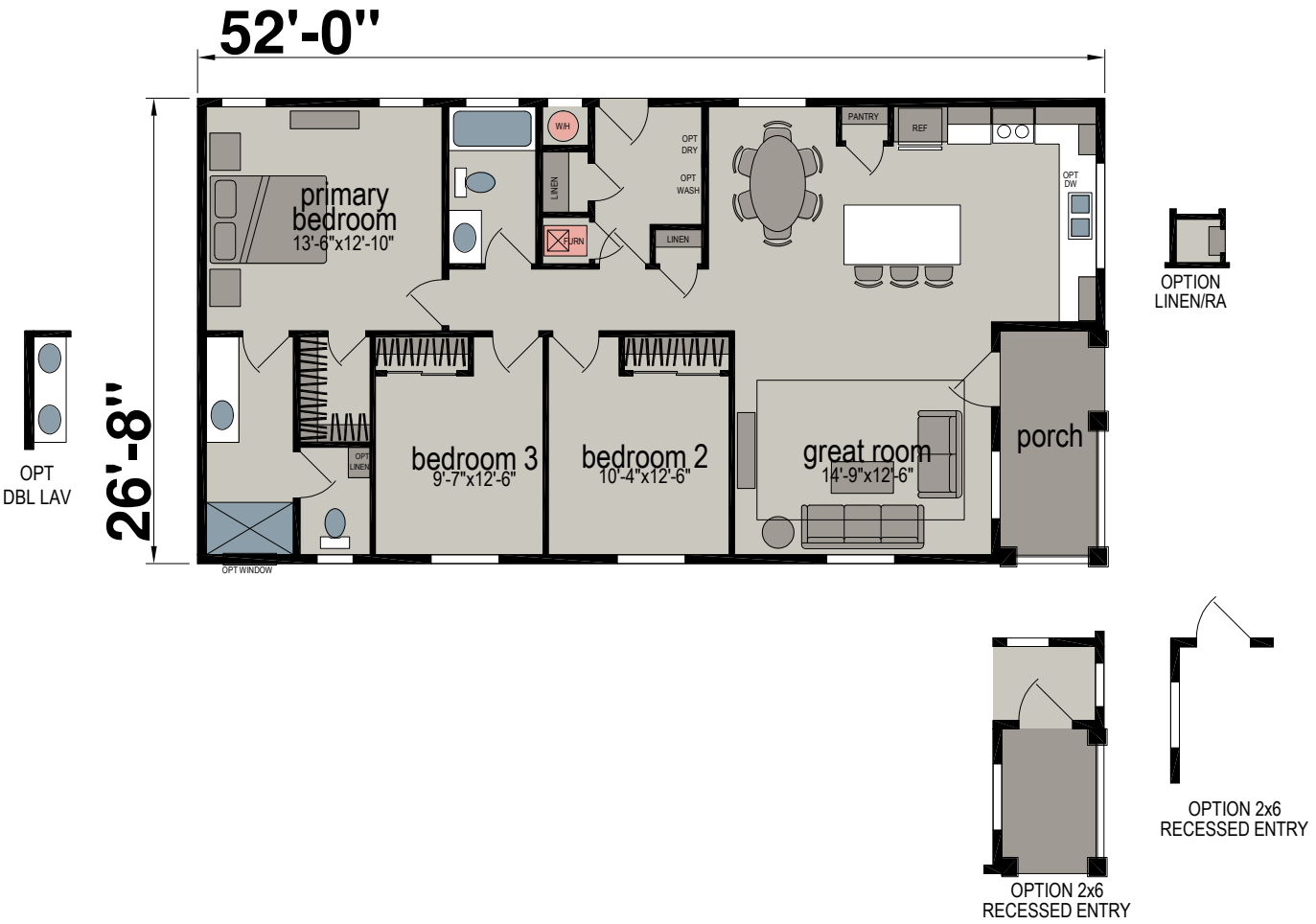
## M202J

Four Bed | Two Bath | 1,390 Sq. Ft.



M203J

Three Bed | Two Bath | 1,306 Sq. Ft.





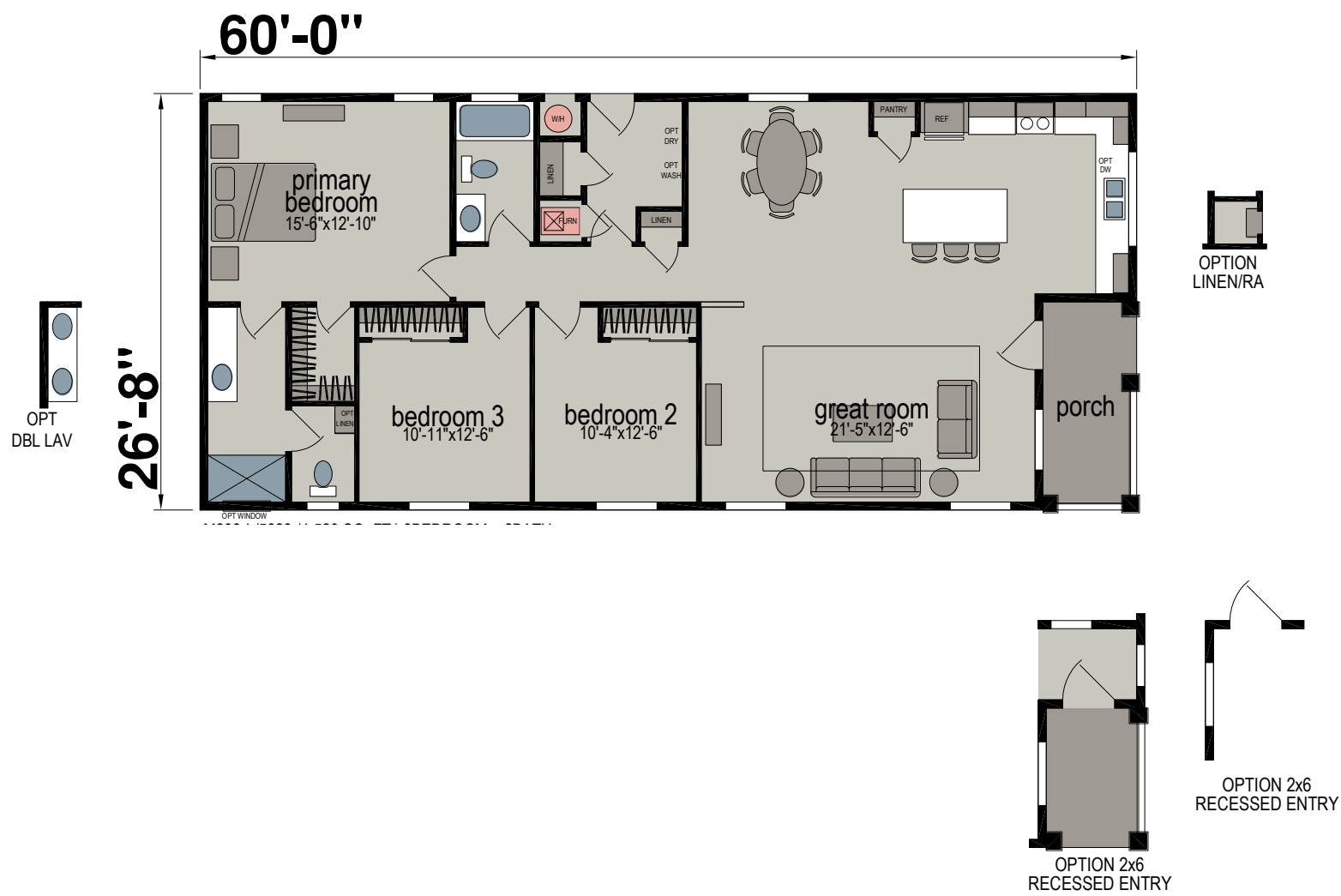
## M203K

Three Bed | Two Bath | 1,413 Sq. Ft.



M203L

Three Bed | Two Bath | 1,520 Sq. Ft.



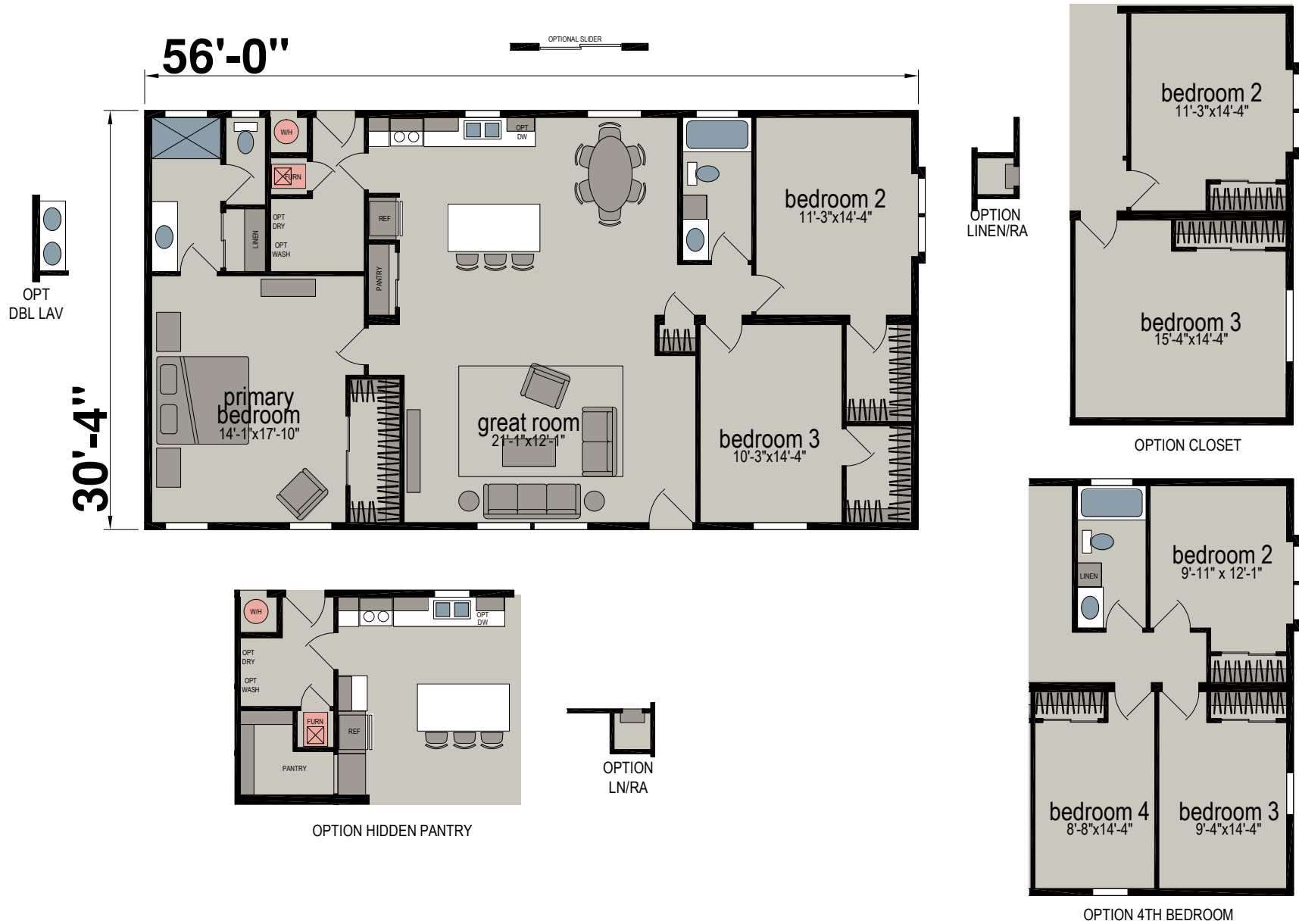
M500A

Three Bed | Two Bath | 1,580 Sq. Ft.



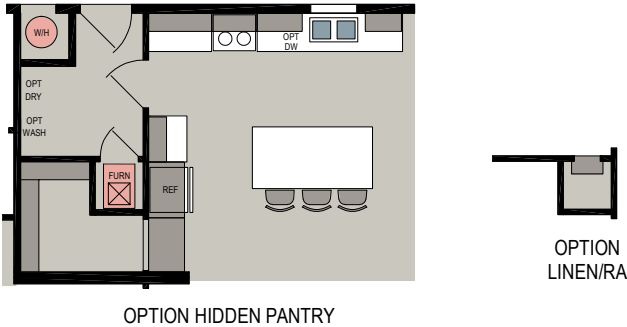
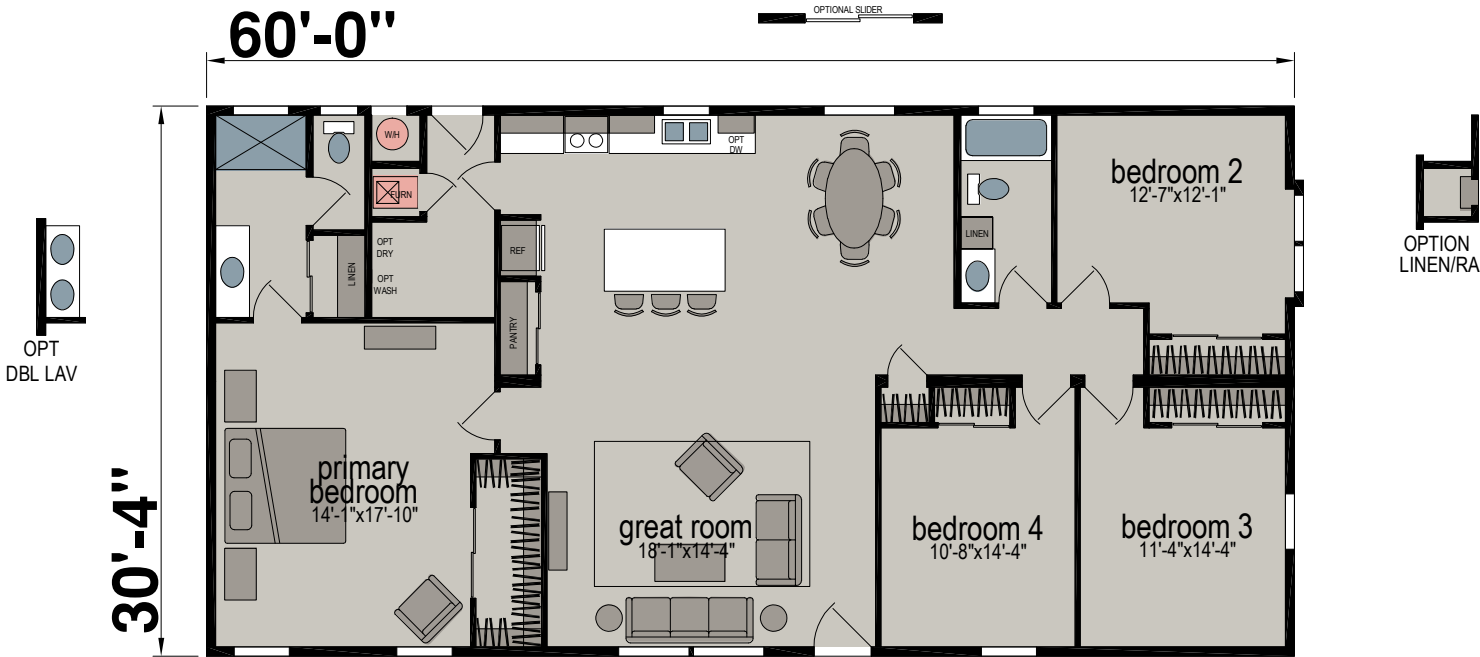
M500B

Three Bed | Two Bath | 1,702 Sq. Ft.



M500C

Four Bed | Two Bath | 1,823 Sq. Ft.



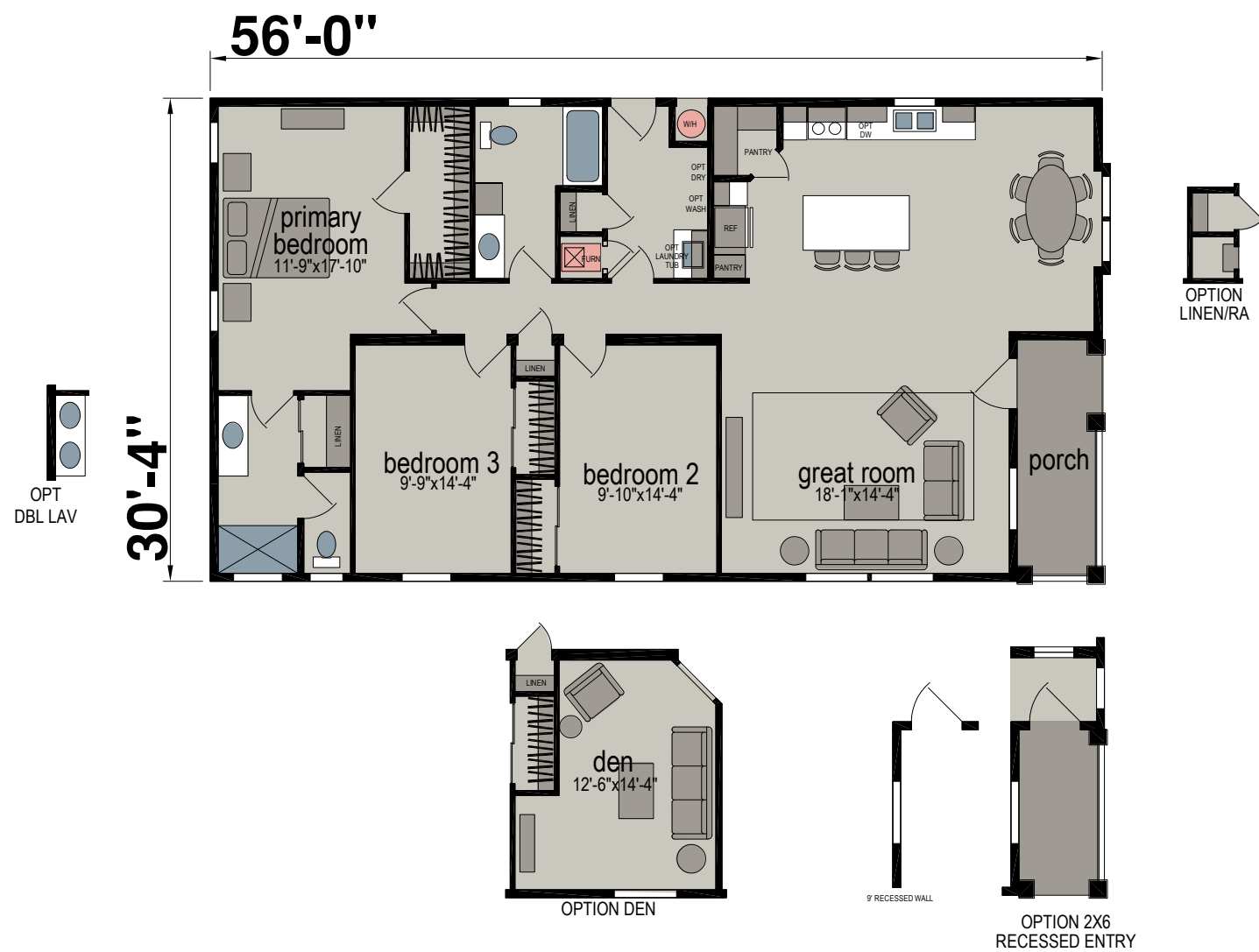
M501A

Three Bed | Two Bath | 1,500 Sq. Ft.



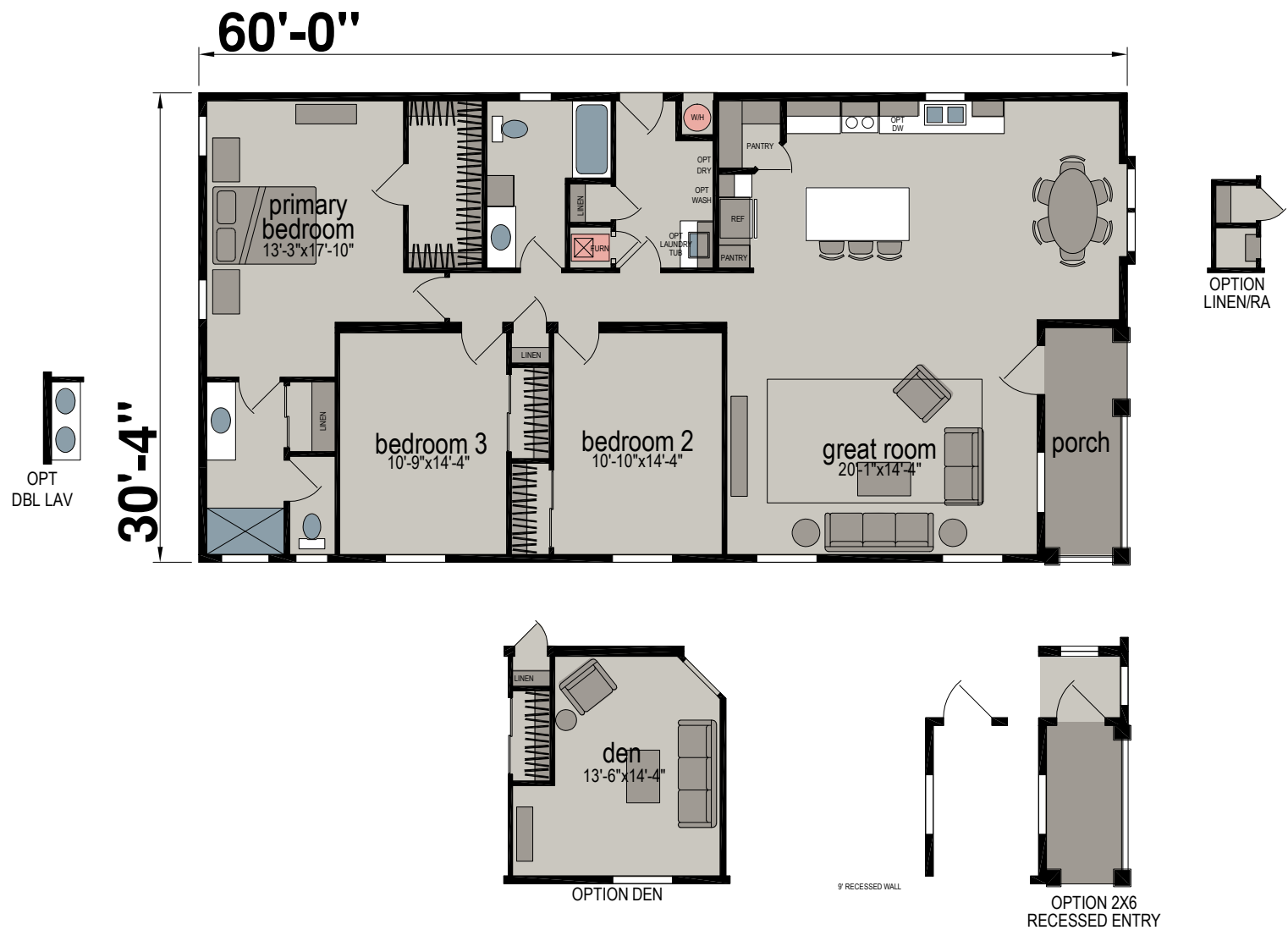
M501B

Three Bed | Two Bath | 1,621 Sq. Ft.



M501C

Three Bed | Two Bath | 1,742 Sq. Ft.





# Standard Features

## Victory Series

### Construction

- ENERGY STAR® II
- 8' Sidewalls
- 2x6 Floor Joists
- 2x8 Floor Joists (Single Section)
- 2x6 Exterior Sidewalls
- R-33 Ceiling Insulation
- R-19 Wall Insulation
- R-22 Floor Insulation
- 20lb Roof Load
- 3:12 Roof Pitch (Per Plan)
- Tongue & Groove OSB Floor Decking
- Dual-Glazed Vinyl Framed Low-E Windows
- Steel Outriggers on Exterior Walls
- PEX Water Lines
- Shutoff Valves at all Sinks & Toilets
- WUI Compliant Roof Vents

### Exterior

- Vertical Cement Fiber Siding
- Class "A" Architectural Roof Shingles
- Upgrade Exterior
- Exterior Light at Front & Rear Doors
- 36" Craftsman Front Door with Deadbolt
- 32" Cottage Rear Door with Deadbolt
- 12" Front Overhang
- 12" Rear Overhang
- 6" Side Eaves (Per Plan)
- Semi-Gloss Exterior Paint

### Interior

- 8' Flat Ceiling
- ½" Drywall Throughout
- Sculptured Floor Molding & Door Casing
- Hand-Finished Knock-Down Wall Texture
- Low Sheen Interior Paint
- 3-Panel Bypass Closet Doors (Per Plan)
- 3-Panel Interior Doors with 3-Mortised Nickel Hinges

- Lever Door Handles with Satin Nickel Finish
- Shaw® Stain Safety Treated Carpet
- 3/8" Rebond Capet Pad
- Vinyl Flooring in Kitchen, Dining Room, Baths & Utility (Per Plan)
- 2" Faux Wood Blinds with Faux Wood Valance
- Double Wood Shelf & Pole in Primary Bedroom Wardrobe
- Single Wood Shelf & Pole in Guest Bedroom Wardrobe
- Wood Shelving in Hall Closet & Linen Closets
- Wood Shelf & Pole Above Washer/Dryer Area
- Cased Windows

### Electrical, Heating & Pumping

- 100 Amp Exterior Electrical Panel Box
- GFI Protected Outlets in Kitchen & Baths
- 4" LED Can Lights Throughout
- Ceiling Fan Prep in Living Room & Bedrooms
- Exterior GFI Protected Outlet
- USB Receptacle in Kitchen Area
- Smoke Detectors with Battery Back-Up
- Switch Wall Outlet in Living Room & Bedrooms
- Dining Room Chandelier
- Shutoff Valves Throughout
- Silent Rocker Light Switches
- 3-Way Switch in Hall & Utility Room
- 40-Gallon Gas Water Heater
- Down Flow Gas Furnace
- Manual Thermostat
- Plumbing for Washer
- Preparation for Gas Dryer
- Recessed Dryer Vent Box

### Kitchen

- Hardwood Shaker Style Cabinets
- 42" Tall Overhead Cabinets
- Crown Molding on all Overhead Cabinets
- 3/4" Adjustable Base & Overhead Shelves

- Large Gourmet Kitchen Island (Per Plan)
- Full Extension Ball Bearing Drawer Guides
- Whirlpool® Brand Name Stainless Steel Appliances
- 18.1 Cu.Ft. Frost-Free Refrigerator
- 30" Deluxe Gas Range with Electronic Ignition, Window, Clock & Timer
- Microwave Rangehood
- Dining Room Chandelier
- Deep Single Cell Stainless Steel Sink
- High Arch Single-Lever Faucet with Pull-Out Sprayer
- Bank of Drawers
- Laminate Countertop
- Laminate Square Edge
- Full Height Tile Design Backsplash

### Bath

- 60" Fiberglass Shower with Single-Lever Diverter in Primary Bath
- 60" One-Piece Fiberglass Tub/Shower
- Clear Shower Door in Primary Bath
- Porcelain Sink with Overflow & Pop-Up Drain
- Single-Lever Tub/Shower Diverter
- Dual Control Faucets
- Elongated Water-Saver Commode
- Vanity Light Fixture
- Vanity Mirror
- Ceiling Exhaust Fan
- 36" High Countertop
- Laminate Countertop
- Laminate Square Edge
- 4" Laminate Backsplash
- Full Extension Ball Bearing Drawer Guides
- Linen Closet in Primary Bath
- Drawer Bank in Primary Bath
- Beveled Medicine Cabinet in Primary Bath
- Ventilation Windows
- Towel Bar & Tissue Holder
- Privacy Lock

Due to continuous product development and improvement, prices, specifications, and materials are subject to change without notice or obligation. Square footage and other dimensions are approximate. Exterior images may be artist renderings and are not intended to be an accurate representation of the home. Renderings, photos and floor plans may be shown with optional features or third-party additions.

# SKYLINE®



Contact Us Today!

Member:



499 W Esplanade Ave | San Jacinto, CA 92583 | (951) 654-9321