

Legend

Focus Areas

-  Fifth St/  
Independence
-  FM 1092
-  Cartwright Rd
-  City Limits
-  ETJ

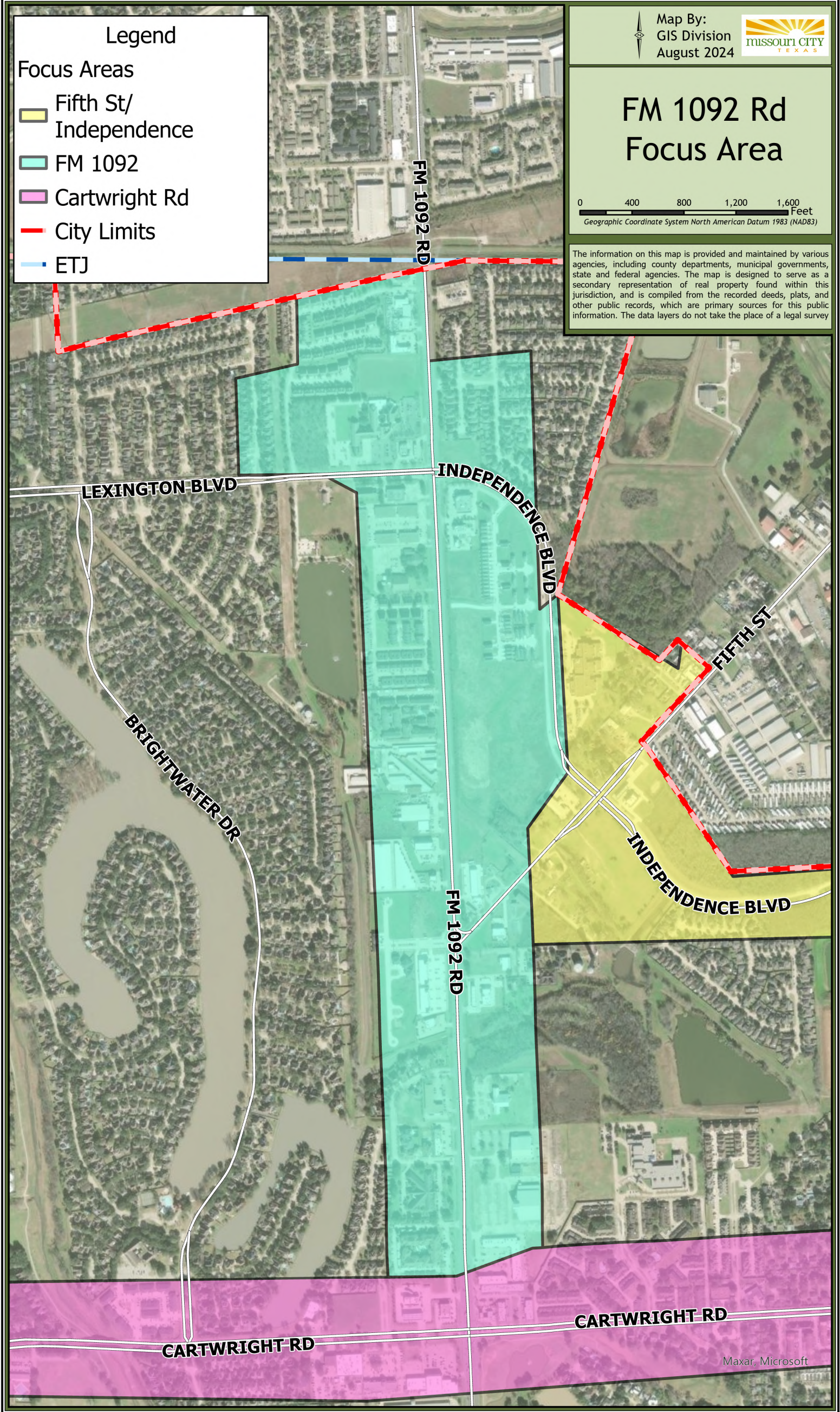
Map By:  
GIS Division  
August 2024



# FM 1092 Rd Focus Area

0 400 800 1,200 1,600 Feet  
Geographic Coordinate System North American Datum 1983 (NAD83)

The information on this map is provided and maintained by various agencies, including county departments, municipal governments, state and federal agencies. The map is designed to serve as a secondary representation of real property found within this jurisdiction, and is compiled from the recorded deeds, plats, and other public records, which are primary sources for this public information. The data layers do not take the place of a legal survey





**FM 1092 at Missouri City limits  
Vehicles driving south from Stafford / unincorporated Fort Bend County into  
Missouri City.**





## FM 1092

Vehicles driving north towards unincorporated Fort Bend County / Stafford;  
and vehicles driving south; Signal at Independence Blvd/ Lexington Blvd and  
FM 1092





**FM 1092**

**Vehicles driving north; and vehicles driving south; Signal at 5th Street and FM 1092**







## Key Features of FM 1092

State of Texas / TxDOT Highway

Major Thoroughfare

North of Missouri City, turns into Murphy Road and intersects with US Route 59/Interstate 69

South in Missouri City, at State Highway 6, turns into University Boulevard which intersects with US Route 59/Interstate 69

Annexation of land along corridor primarily between 1959 and 1983

4-Lane roadway from City limits to the north to 6-Lane roadway near Cartwright Road intersection

Consists of median dividers and open ditches

Existing land uses include residential, commercial/retail, light industrial civic

Recent development includes detached, single family townhomes, retail shopping centers, gas stations, and assisted living