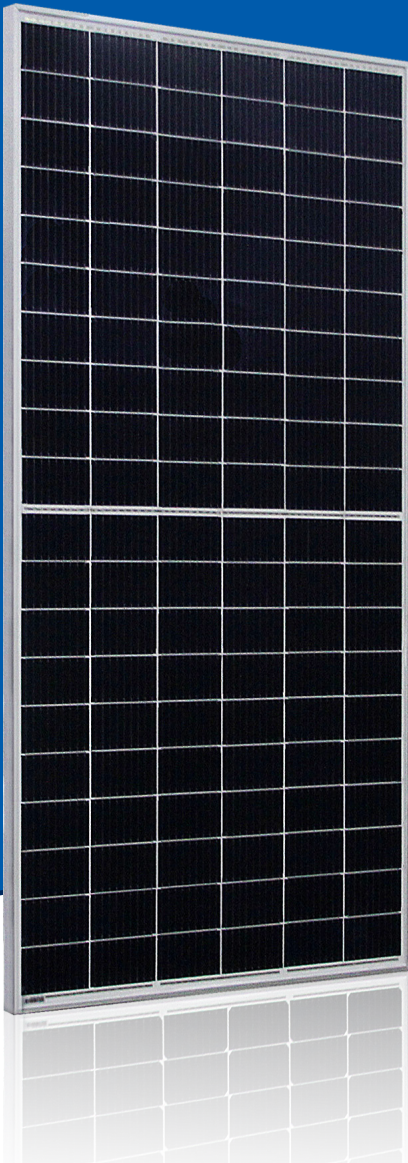


AstroTwins™

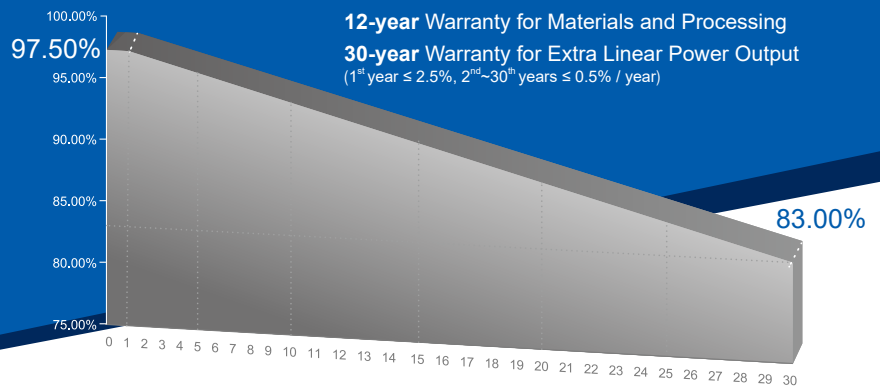
Enjoy the Energy of the Universe



335W~350W

P-type Monocrystalline PV Module
CHSM60M(DG)/F-BH Series (158.75)

CHSM60M(DG)/F-BH is bifacial module with white glazed glass



KEY FEATURES

- OUTPUT POSITIVE TOLERANCE**
Guaranteed 0~+5W positive tolerance ensures power output reliability.
- ENHANCED FIRE PERFORMANCE**
Fire Class A certified according to IEC standard.
- EXCELLENT WEATHER RESISTANCE**
Reduces the cell micro-crack and extended product warranty.
- BIFACIAL POWER**
The backside makes use of the reflected and scattered light from the surroundings, the modules can yield up to 5%~30% power more, depending on the albedo.
- REDUCE INTERNAL MISMATCH LOSS**
Reduces mismatch loss and improves output.
- APPLICABLE FOR MULTI DIFFERENT ENVIRONMENTS**
The wide range of applications, such as BIPV, vertical installation, snow area, high humidity area and strong sandstorm area, etc.
- SNAIL TRAIL RESISTANCE**
Reduces the probability of snail trails with zero water vapor transmittance.

COMPREHENSIVE CERTIFICATES



Special for Australian Market



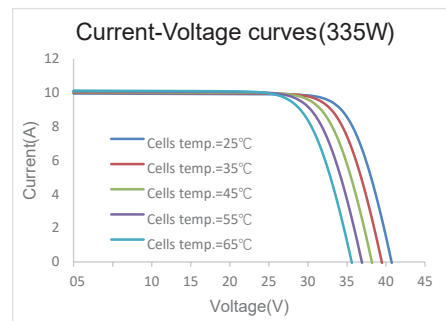
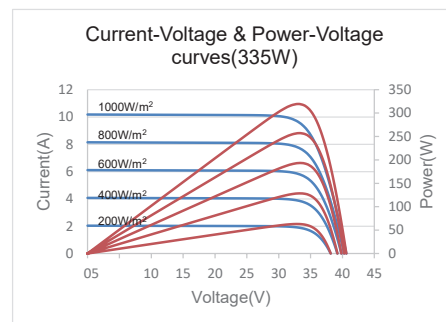
ASTRONERGY
A CHNT COMPANY

ELECTRICAL SPECIFICATIONS

Power rating (front)	335 Wp		340 Wp		345 Wp		350 Wp	
Testing Condition	Front	Back	Front	Back	Front	Back	Front	Back
STC rated output (P_{mpp}/Wp)*	335	236	340	239	345	243	350	245
Rated voltage (V_{mpp}/V) at STC	34.44	34.62	34.67	34.85	34.90	35.08	33.27	34.12
Rated current (I_{mpp}/A) at STC	9.73	6.82	9.81	6.87	9.89	6.93	10.52	7.18
Open circuit voltage (V_{oc}/V) at STC	40.80	39.60	40.99	39.78	41.18	39.96	39.81	38.86
Short circuit current (I_{sc}/A) at STC	10.14	7.11	10.21	7.16	10.28	7.21	10.99	7.88
Module efficiency	19.4%	13.6%	19.6%	13.8%	19.9%	14.0%	20.2%	14.2%
Temperature coefficient (P_{mpp})					- 0.3438%/°C			
Temperature coefficient (I_{sc})					+0.0353%/°C			
Temperature coefficient (V_{oc})					- 0.2722%/°C			
Nominal module operating temperature (NMOT)					44±2°C			
Maximum system voltage (IEC/UL)					1500V _{DC}			
Number of diodes					3			
Junction box IP rating					IP 68			
Maximum system fuse rating					20 A			

* Measurement tolerance +/- 3%
STC: Irradiance 1000W/m², Cell Temperature 25°C, AM=1.5

CURVE



ELECTRICAL SPECIFICATIONS (Integrated power)

P_{mpp} gain	P_{mpp}	V_{mpp}	I_{mpp}	V_{oc}	I_{sc}
5%	352 Wp	34.44 V	10.21 A	40.80 V	10.65 A
10%	369 Wp	34.44 V	10.70 A	40.80 V	11.15 A
15%	385 Wp	34.34 V	11.22 A	40.90 V	11.66 A
20%	402 Wp	34.34 V	11.71 A	40.90 V	12.17 A
25%	419 Wp	34.34 V	12.19 A	40.90 V	12.68 A

Measurement tolerance +/- 3%
Electrical characteristics with different rear power gain (reference to 335W)

PACKING SPECIFICATIONS

① Weight (module only)	26.4 kg / 58.20 lbs
② Packing unit	36 pcs / box
Weight of packing unit (for 40'HQ container)	992 kg / 2187 lbs
Number of modules per 40'HQ container	936 pcs

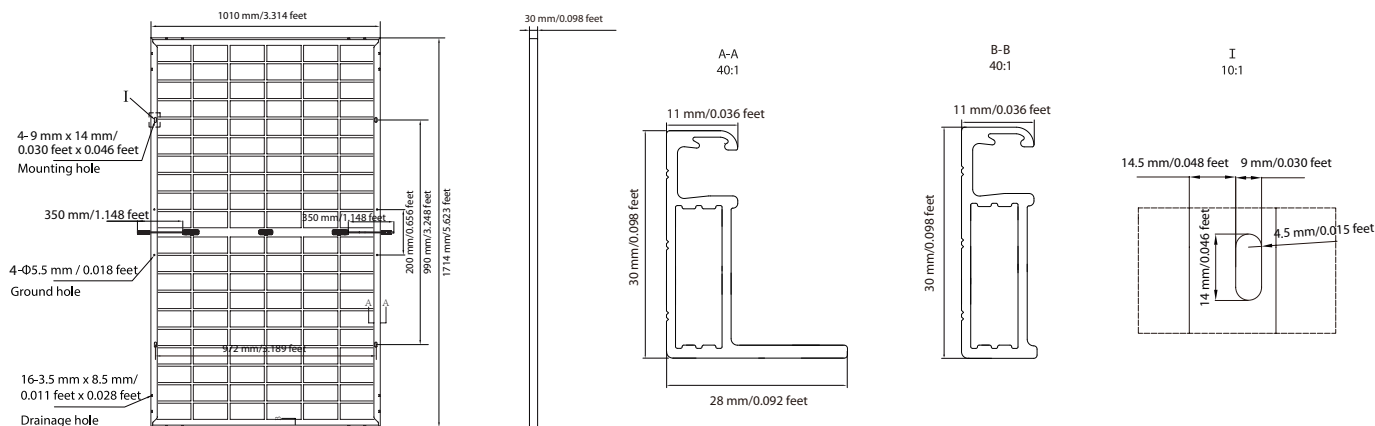
① Tolerance +/- 1.0kg
② Subject to sales contract

MECHANICAL SPECIFICATIONS

Outer dimensions (L x W x H)	1714 x 1010 x 30 mm 67.48 x 39.76 x 1.18 in
Module composition	Glass / POE/ Glass
Glass thickness	2.5 mm / 0.098 in
Cable length (IEC/UL)	Portrait: 350 mm (13.78 in) Landscape: 1100 mm (43.31 in)
Cable diameter (IEC/UL)	4 mm ² / 12 AWG
① Maximum mechanical test load	2400 Pa (front) / 2400 Pa (back)
Fire performance (IEC/UL)	Class A (IEC) or Type 3 (UL)
Connector type (IEC/UL)	PV-CY03L (Logo:CHUANG YUAN) or PV-HCB40(Logo:XINHUI) or MH5 (Logo:MINGHE) or PV-KST4-EVO2/XY-UR,PV-KBT4-EVO2/XY-UR(Logo:MC)

① Refer to Astronergy crystalline installation manual or contact technical department.
Maximum Mechanical Test Load=1.5*Maximum Mechanical Design Load.

MODULE DIMENSION DETAILS



Made in Zhejiang, Jiangsu and Anhui of China, Made in Sincan/ Ankara of Turkey
© Chint Solar (Zhejiang) Co., Ltd. Reserves the right of final interpretation, please contact our company to use the latest version for contract.

<http://energy.chint.com>