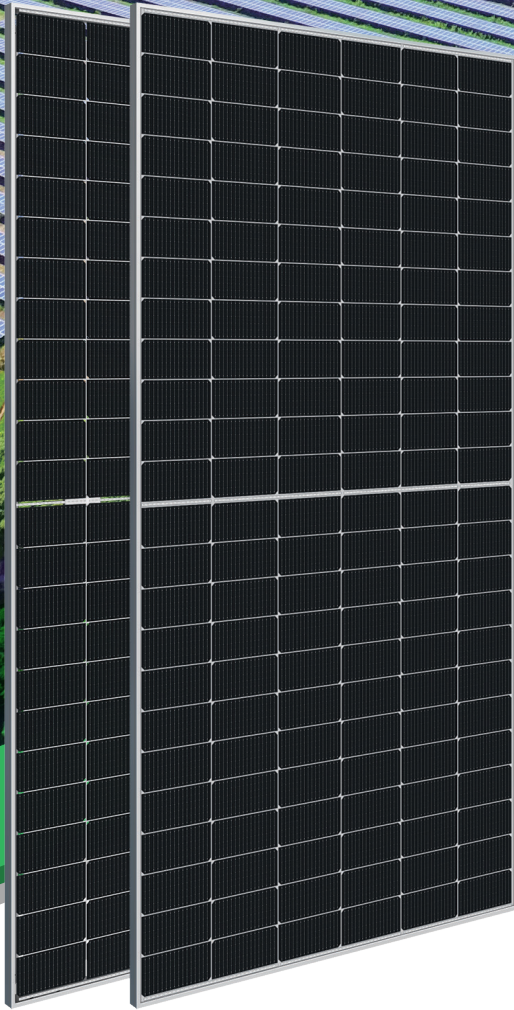
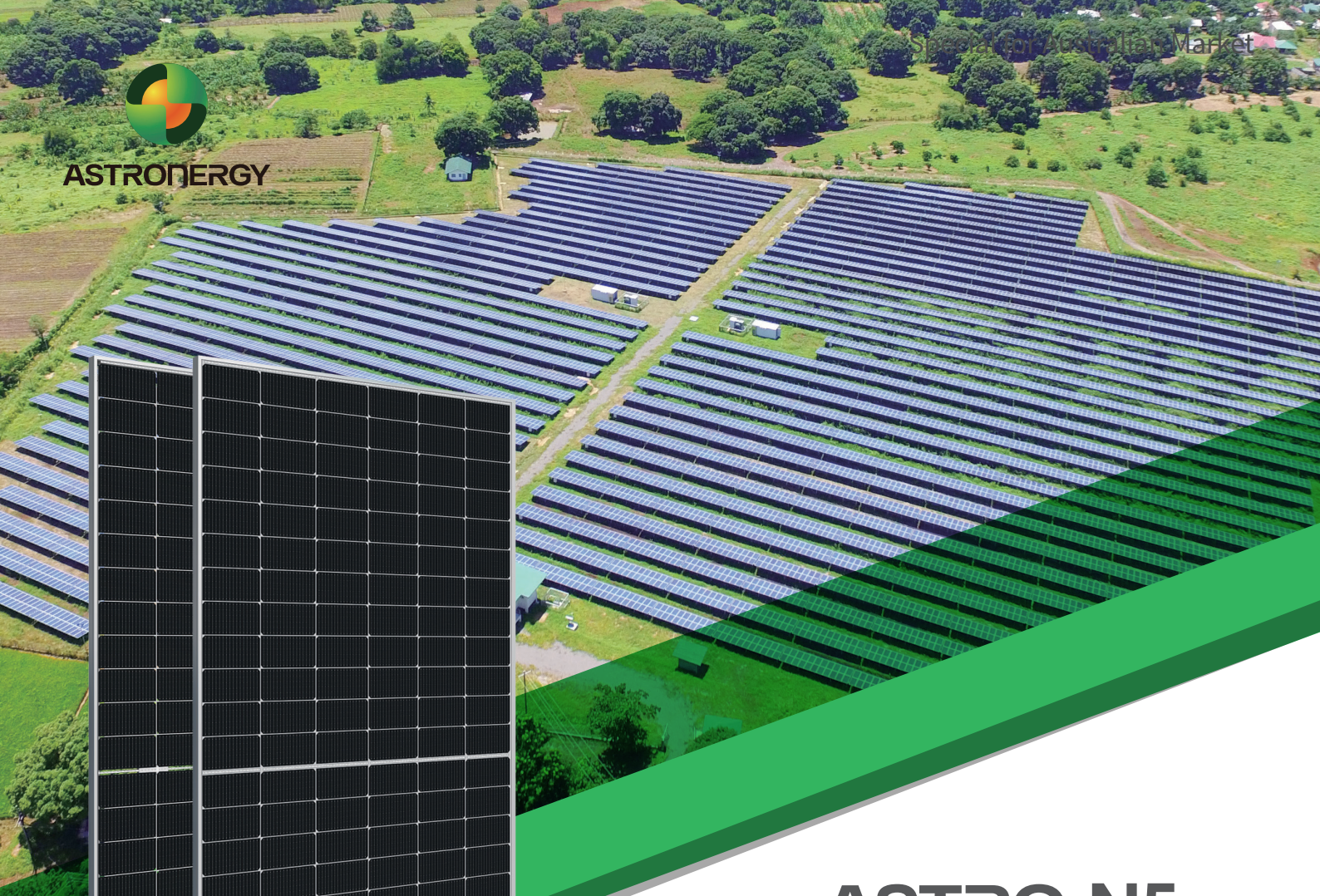




ASTRONERGY



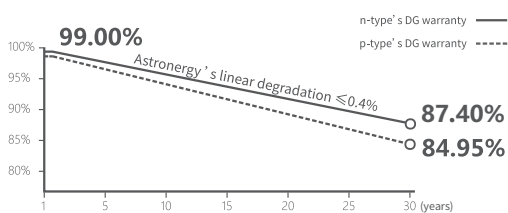
# ASTRO N5

CHSM72N(DG)/F-BH  
Bifacial Series(182)

## 565~585W

### Warranty

- 12** 12-year Product Warranty
- 30** 30-year Linear Power Warranty



### Key Features

- TOPCon / Half-cut
- Better temperature coefficient (Pmpp)
- Non-destructive cutting
- Low BOS cost & LCOE
- Bifacial gain



ISO 9001:2015:ISO Quality Management System  
 ISO 14001:2015:ISO Environment Management System  
 ISO 45001:Occupational Health and Safety



Tier 1  
 BloombergNEF



**565~585W**

POWER RANGE

**0~+5W**

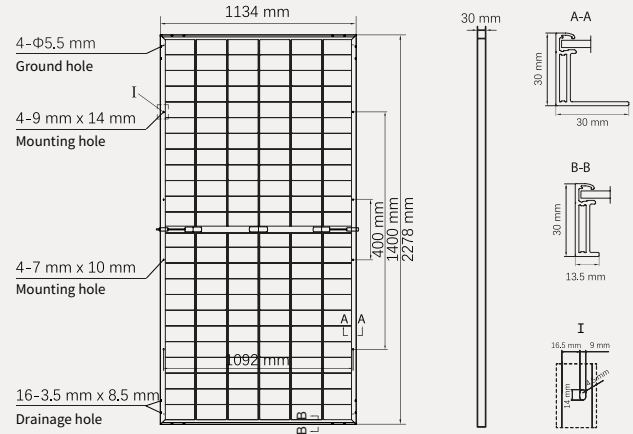
POWER SORTING

**22.6%**MAX MODULE  
EFFICIENCY**≤ 1.0%**FIRST YEAR  
POWER DEGRADATION**≤ 0.4%**YEAR 2-30  
POWER DEGRADATION

## Mechanical Specifications

Outer dimensions (L x W x H)	2278 x 1134 x 30 mm
Cell type	n-type mono-crystalline
No. of cells	144 (6*24)
Frame technology	Aluminum, silver anodized
Front / Back glass	2.0+2.0 mm
Cable length (Including connector)	Portrait: (+)350 mm, (-)250 mm; Customized length
Cable diameter (IEC/UL)	4 mm <sup>2</sup> / 12 AWG
① Maximum mechanical test load	5400 Pa (front) / 2400 Pa (back)
Connector type (IEC/UL)	PV-HCB40 (Astronergy) or PV-KST4-EVO2A/ xy, PV-KBT4-EVO2A/xy (Stäubli)
Module weight	32.1 kg
Packing unit	36 pcs / box (Subject to sales contract)
Weight of packing unit (for 40'HQ container)	1215 kg
Modules per 40' HQ container	720 pcs

① Refer to Astronergy crystalline installation manual or contact technical department.  
Maximum Mechanical Test Load=1.5×Maximum Mechanical Design Load.



## Electrical Specifications CHSM72N(DG)/F-BH-XXX(XXX=565-585)

**STC:** Irradiance 1000W/m<sup>2</sup>, Cell Temperature 25° C, AM=1.5

Rated output (Pmpp / Wp)	565	570	575	580	585
Rated voltage (Vmpp / V)	42.61	42.77	42.94	43.11	43.27
Rated current (Impp / A)	13.26	13.33	13.39	13.45	13.52
Open circuit voltage (Voc / V)	50.70	50.90	51.10	51.30	51.50
Short circuit current (Isc / A)	14.02	14.10	14.19	14.28	14.36
Module efficiency	21.9%	22.1%	22.3%	22.5%	22.6%

**NMOT:** Irradiance 800W/m<sup>2</sup>, Ambient Temperature 20° C, AM=1.5, Wind Speed 1m/s

Rated output (Pmpp / Wp)	424.9	428.6	432.4	436.2	439.9
Rated voltage (Vmpp / V)	40.10	40.26	40.42	40.59	40.73
Rated current (Impp / A)	10.60	10.65	10.70	10.75	10.80
Open circuit voltage (Voc / V)	48.16	48.35	48.54	48.73	48.92
Short circuit current (Isc / A)	11.32	11.39	11.46	11.53	11.59

Power Sorting: 0~+5W Power tolerance: +/- 3.5%

## Electrical Specifications (Integrated power)

Pmpp gain	Pmpp / Wp	Vmpp / V	Impp / A	Voc / V	Isc / A
5%	599	42.77	13.99	50.90	14.10
10%	627	42.77	14.66	50.90	15.48
15%	656	42.78	15.32	50.91	16.18
20%	684	42.78	15.99	50.91	16.88
25%	713	42.78	16.65	50.91	17.58

Electrical characteristics with different rear power gain (reference to 570W)

## Temperature Ratings (STC) Operating Parameters

Temperature coefficient (Pmpp)	-0.29%/°C	No. of diodes	3
Temperature coefficient (Isc)	+0.043%/°C	Junction box IP rating	IP 68
Temperature coefficient (Voc)	-0.25%/°C	Max. series fuse rating	30 A
Nominal module operating temperature (NMOT)	41±2°C	Max. system voltage (IEC/UL)	1500V <sub>DC</sub>
Fire performance:	Class A		

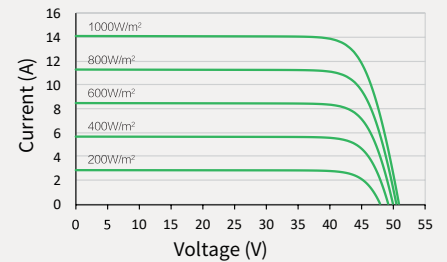
Made in China, Made in Thailand.

© Chint New Energy Technology Co., Ltd. Reserves the right of final interpretation. please contact our company to use the latest version for contract.

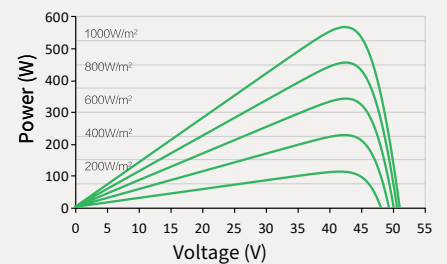
<http://www.astronergy.com.au>

## Curve

Current-Voltage (570W)



Power-Voltage (570W)



Current-Voltage (570W)

