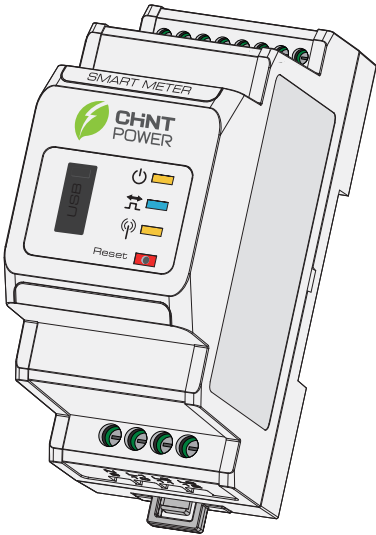


# Smart Meter USER MANUAL



## 01 INTRODUCTION

Smart Meter is designed with high precision small dimensions, convenient operation and installation.

It is available for both single-phase grid system connection to detect voltage, current, power and energy, for working with inverters including SEMS systems for the purpose energy management.

Any fault or damage caused misoperation or disobeyal against the rules on manual is beyond manufacturer warranty cover range.

### PACKING LIST

1* Smart Meter	1* CT (Current Transformer) [1]
1* Screw Driver	4* Cable Connection Terminal
2* USB Seal	1* RJ45-to-Pin Cable [2]

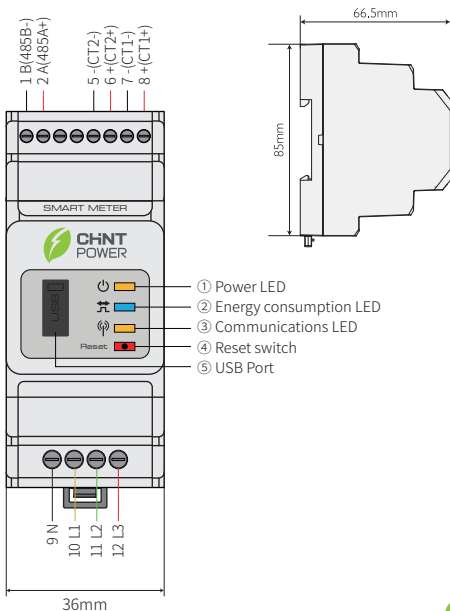
### NOTE:

- [1] A three-phase Meter will contain 3 CT clamps.
- Specifications are subject to the physical product.
- [2] Only suitable for RS485 cable connection on RJ45 part of hybrid inverter.

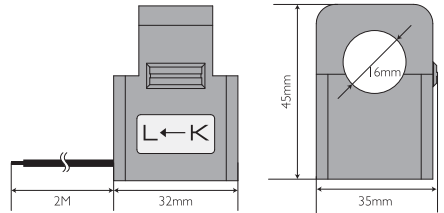
01

## 02 OVERVIEW

### 2.1 SMART METER OVERVIEW



### 2.2 CT OVERVIEW



## 03 INSTALLATION INSTRUCCION

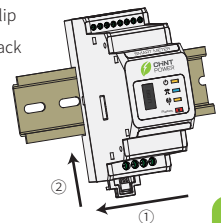
### 3.1 INSTALLATION ENVIROMENT

**Protection Class:** IP20(for indoor use)

**Operating Temperature:** -25°C~60°C

### 3.1 INSTALLATION (WITH DIN TRACK)

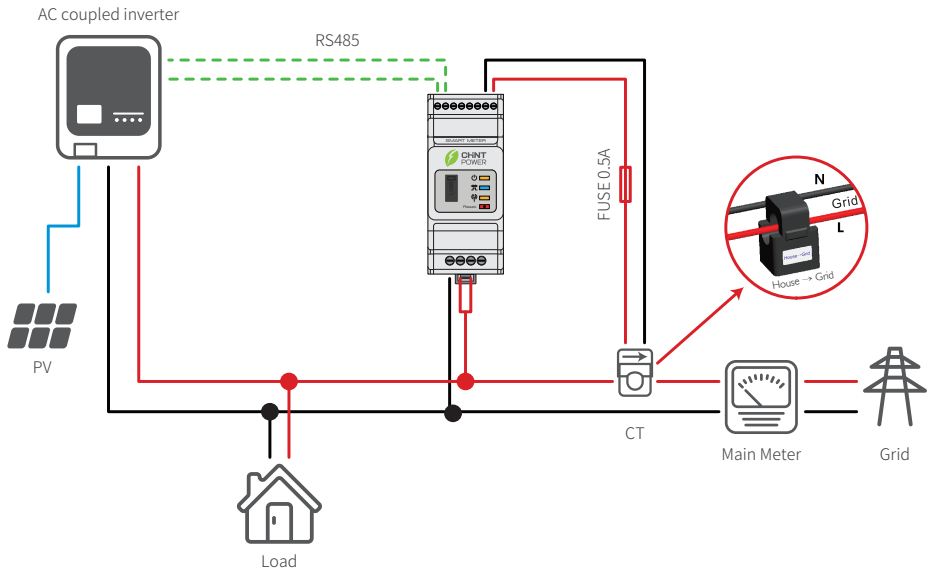
- ① Pull to release the retaining clip
- ② Mount the HomeKit on the track and push the Retaining clip up(a click sound indicates it is installed well)



02

03

### 3.3 WIRING CONNECTION



Correct direction of CT: House (K)→Grid(L).

⚠ Incorrect connection or direction will cause incorrect data.

04

04

#### ELECTRICAL DATA

<b>MODEL</b>		CPS1000
<b>APPLICATION</b>		Single-phase
<b>Voltage</b>	Nominal Voltage	230Vac
	Voltage Range	0.7 ~ 1.2Un
	Frequency	50Hz/60Hz
<b>Current Input</b>	Nominal Current	CT in:120A/40mA
	Current Range	0.48A ~ 120A
<b>Self-Consumption</b>		3W max
<b>Data Detection</b>		Voltage / Current / Active Power / Reactive Power / Power Factor / Frequency
<b>Energy Calculation</b>		Active / Reactive Power Energy
<b>Precision</b>	Voltage/ Current	Class 1
	Active Power	Class 1
	Reactive Power	Class 2
<b>Communication (With inverter)</b>		RS485 (Bund Rate 9600 / ModBus Protocol / communication cable max. length 100m)

06

05

#### INTERFACE

##### 5.1 INDICATIONS

- **Power LED:**  
Normal status: ON
- **Energy Consumption LED:**  
Consuming: ON  
Generating: Blinking
- **Communicating LED:**  
Transmitting data: ON  
Resetting: Blink 5 times

##### 5.2 RELOAD Button

Press	Function
<3s	Meter reset
5s	Meter settings initialization
>10s	Meter initialize settings and clear energy data

##### 5.3 USB PORT

For after-sales maintenance.

340-00372-00

07