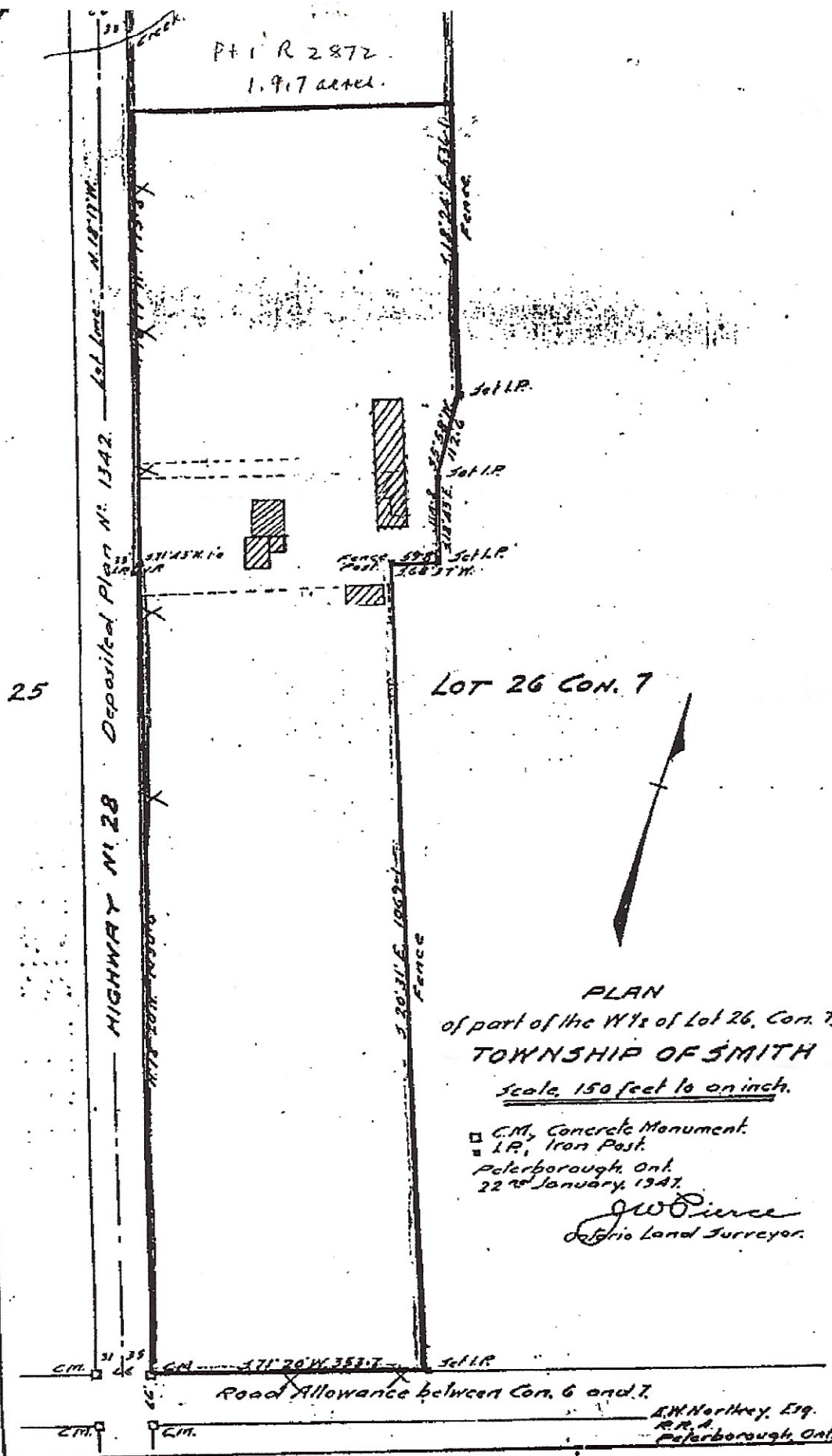


7
8
X

Plat R 2872
1.917 acres.



25

Deposited Plan No. 1342
Highway No. 28

LOT 26 CON. 7



PLAN
of part of the W 1/2 of Lot 26, Con. 7
TOWNSHIP OF SMITH
Scale, 150 feet to an inch.

CM, Concrete Monument.
I.P., Iron Post.
Peterborough, Ont.
22nd January, 1947.

J.W. Pierce
Ontario Land Surveyor.

Road Allowance between Con. 6 and 7.

J.W. Hartney, Esq.
P.R.A.
Peterborough, Ont.