

Chloë Hébert

Architecture Portfolio

2023

Index

Altona Infill	pp. 1 - 10
Cox / Harkin Summerhouse	pp. 11 - 18
Hemma i Gronby	pp. 19 - 26
Freeman Cabin	pp. 27 - 32
Perceptible Encounters	pp. 33 - 40



Altona Infill

Proposal of an infill project for two vacant sites in Lund, Sweden. Studio project at Lund University for AAHN40 - *Dwelling and Space*.

Proposal

In spite of Altona's central location, these sites feel disconnected from the context due to a lack of character and purpose. To transform our site from a space to pass by to a place to visit, we have elaborated the existing urban context.

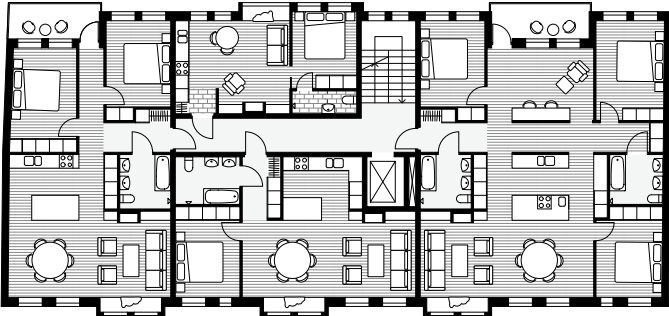
The North site responds to Juridicum and the need for more student space. In turn, we have proposed a café with a large terrace, and student accommodation occupying the levels above. The Café functions as an extension for both the work-space inside of Juridicum as well as the social area outside of the building. Furthermore, this brightens and opens up the corner of an otherwise dark and tight space on the pavement.

The South site responds to the character of the small shops along Stora Gråbrödersgatan with a proposal of retail space on the street level and apartments above. The apartments accommodate a wide variety of household formations by offering a range in the size of the dwellings. At the rear, we have designated a private space for the residents to occupy in a sunken courtyard. This is connected to a series of passages that facilitate circulation throughout the site.

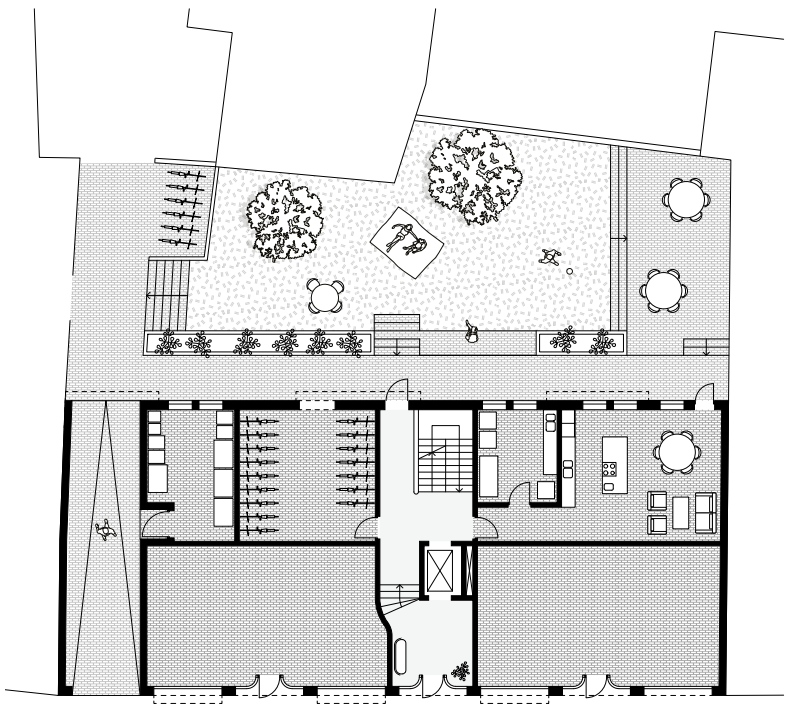


Altona S

- a. Floorplan of apartments on levels 1 - 3
- b. Floorplan of street level
- c. Section of Altona S
- d. Technical section



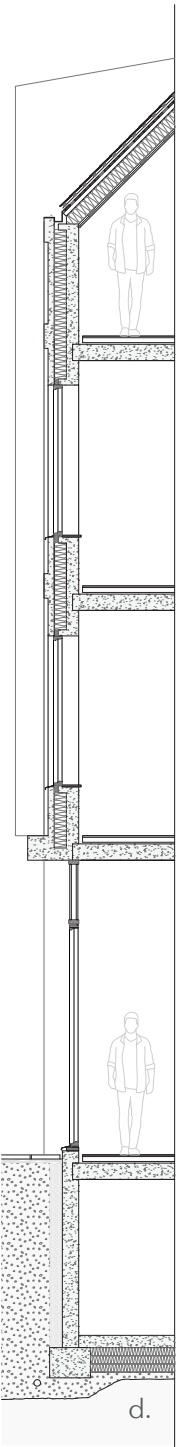
a.



b.



c.

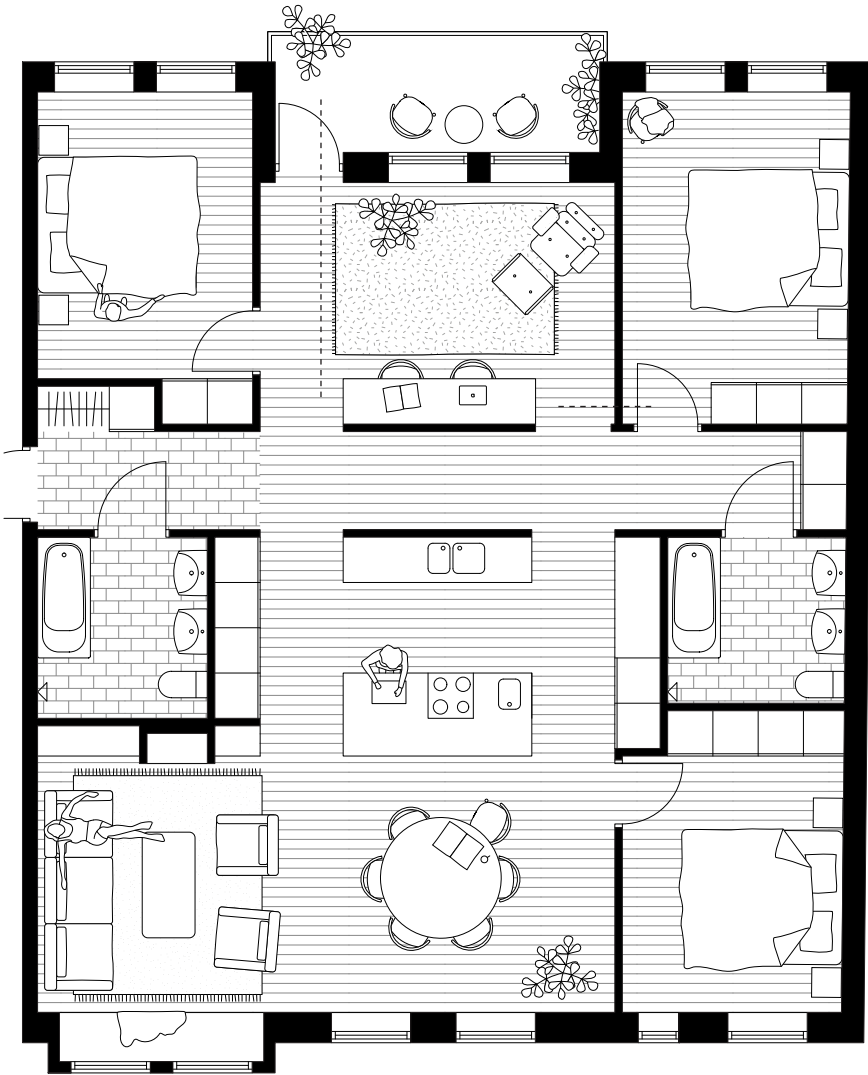


d.

Apartment kitchen



Floorplan of the 3 + 1 bedroom apartment



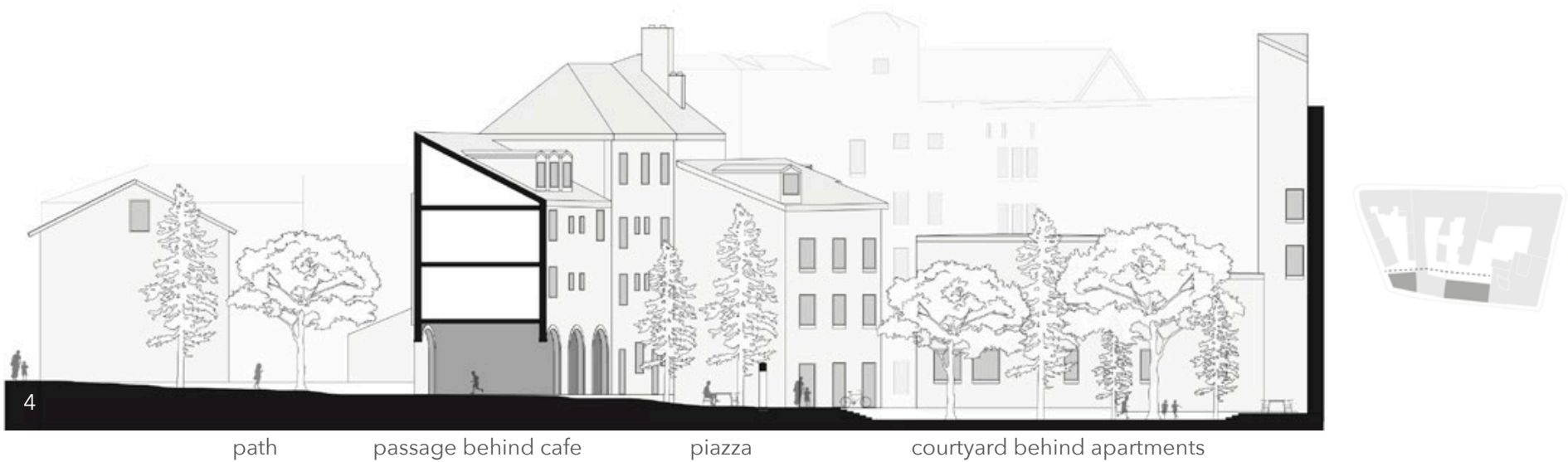
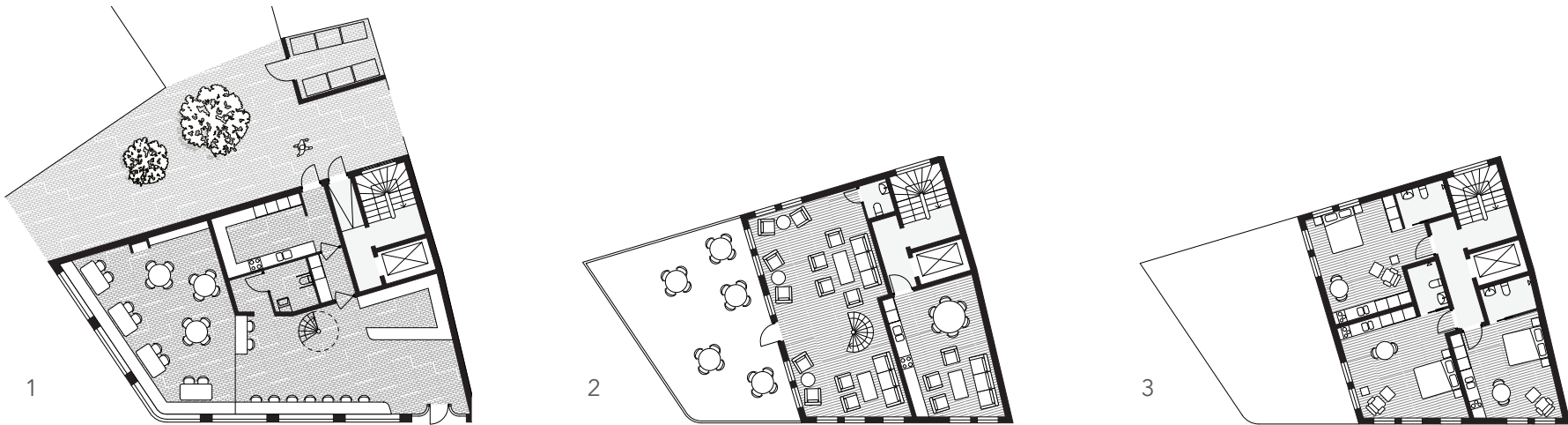
Apartment rendering 3





Altona N

1. Floorplan of cafe at street level
2. Floorplan of cafe at level 1 with communal student space
3. Floorplan of student apartments
4. Section across both Altona S and Altona N



Cafe window and fire-side seating



Cafe window seating





Kitchen

Cox / Harkin Summerhouse

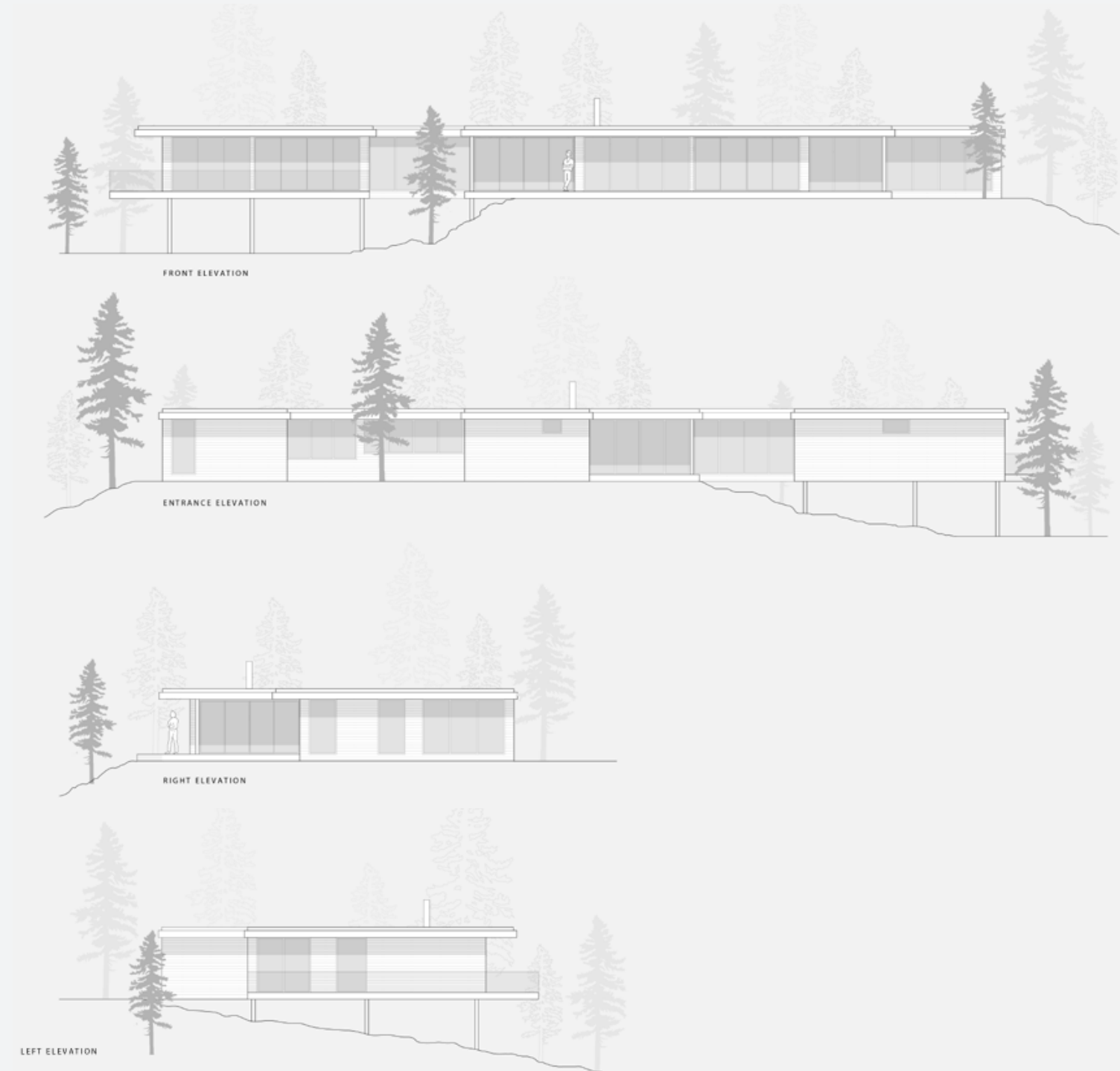


MAFCOhouse. Algonquin Highlands, Canada

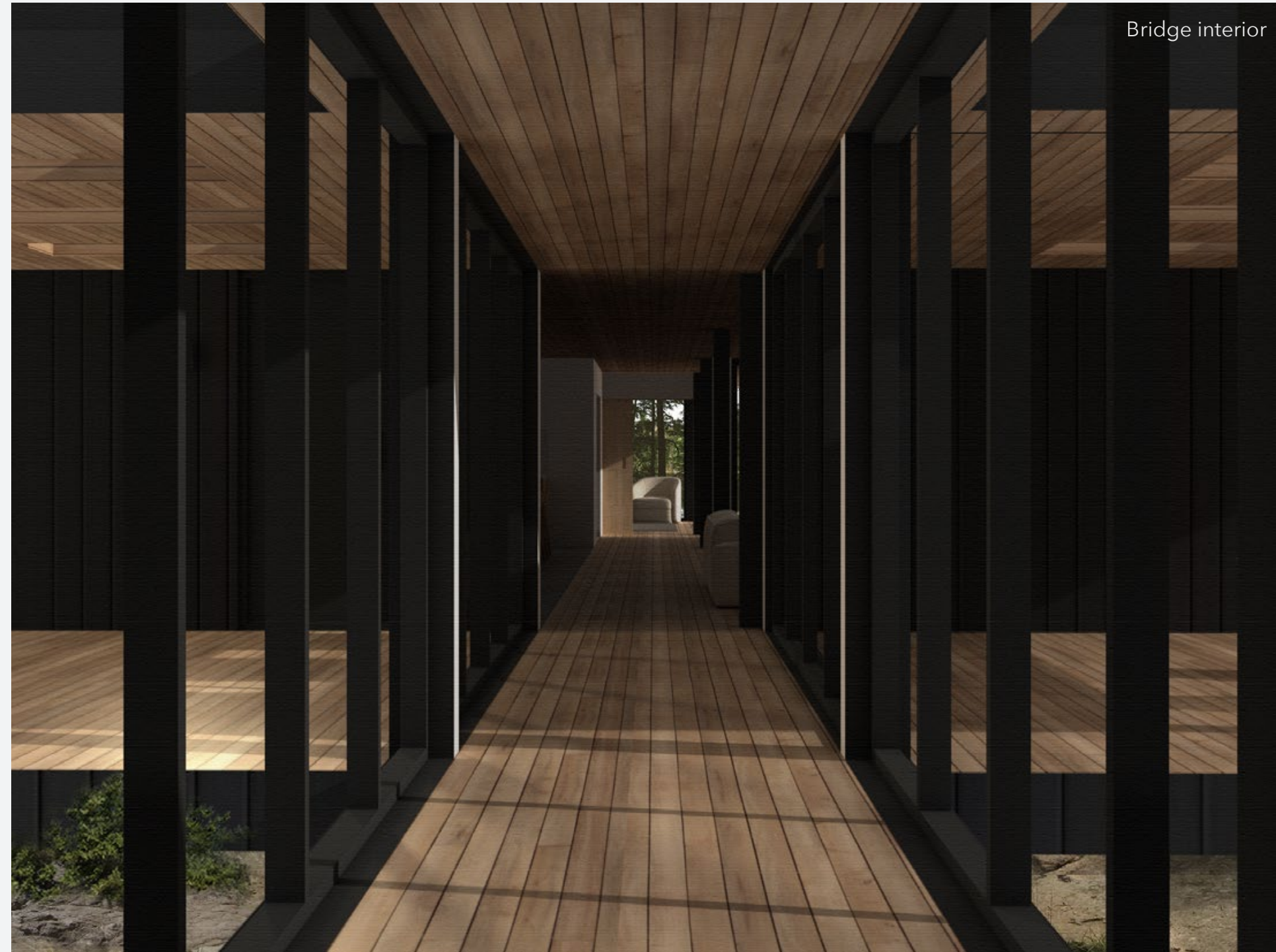
Role: Architectural and interior design, completion of all architectural drawings and renderings

This lakeside single storey residence is situated on a sloped site in the Algonquin Highlands. Site lines were integral in the design process of this home, with transparency through the building available from the moment one steps foot onto the entrance porch. Additionally, a wide corridor with windows at either end stretches the entire length of the building.

A 16 foot bridge connects the primary module of the home to the guest wing, which stands 8 feet above grade. This bridge breaks up the scale of the building and provides privacy to the occupants.



Entrance



Primary bedroom



Primary bedroom ensuite

Guest bedroom ensuite





Hemma i Grönby

Proposal for a new type of rurality in Grönby, Skåne. Studio project at Lund University for AAHN40 - *Dwelling and Space*.



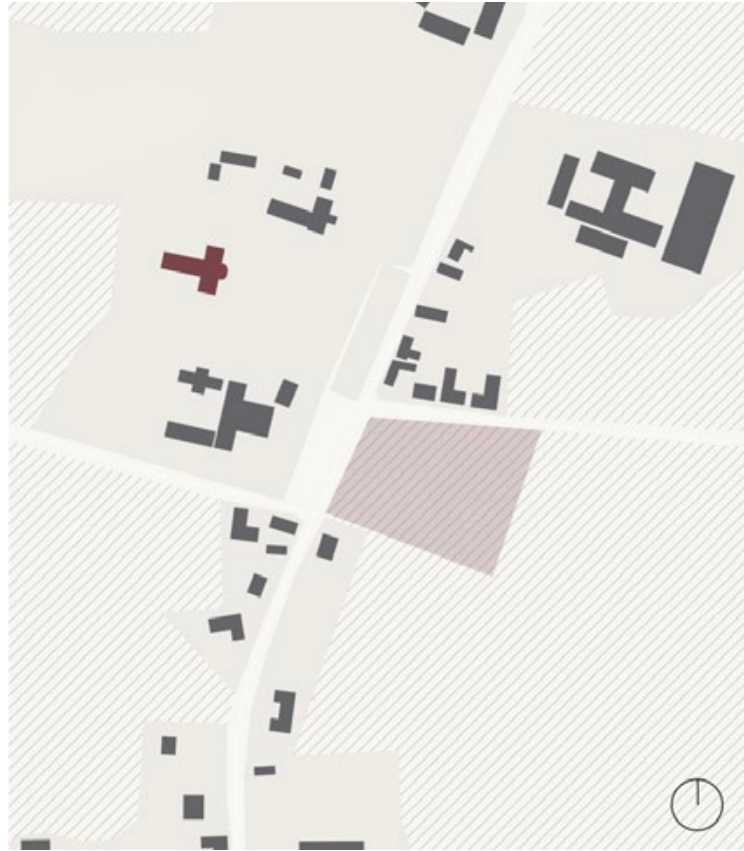
One of the largest advantages to living in a small village is the sense of community that is innately connected to it. It can at first be difficult, however, for newcomers to integrate into this type of tightly-knit environment. Our proposal overcomes this obstacle by offering people a place to work and live where they find a sense of belonging through the goods and services they offer to the community.

The project will house artists, makers, and entrepreneurs who are seeking a connection to the rural environment and to other people. Located in close proximity to the church and the firehall, this small development also redefines the village centre. Here, both long-time residents and newcomers alike can come together and participate in the diverse activities that the spaces will host.



Village Structure

The main element unifying the village of Grönby today is the road that goes through it. Compared to a historic map from 1759, the village seemed to have more of a village center by the way the buildings were drawn.



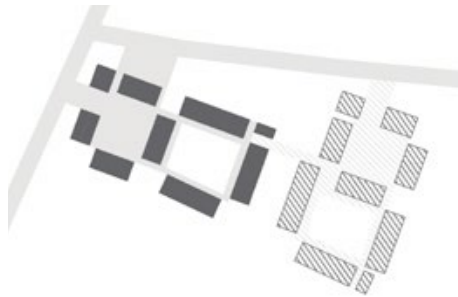
Site Location



Site Plan

The buildings

1. Communal kitchen
2. Co-work space
3. Workshop spaces
4. Public square
5. Residential kitchen & livingroom
6. Dwellings
7. Residential courtyard
8. Residential sauna & laundry



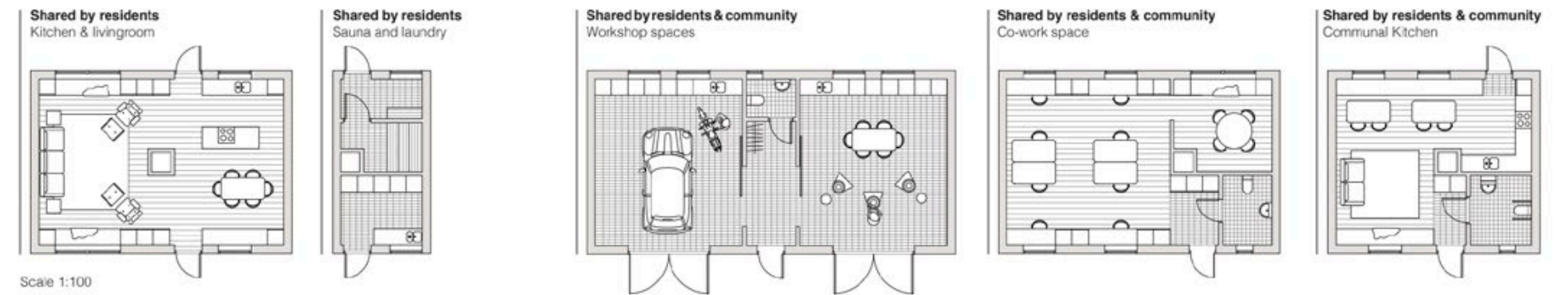
Possibility for growth over time

Since the typology offers a large variety of spaces, both dwellings and common, it could allow for a growth over time.

Private Units



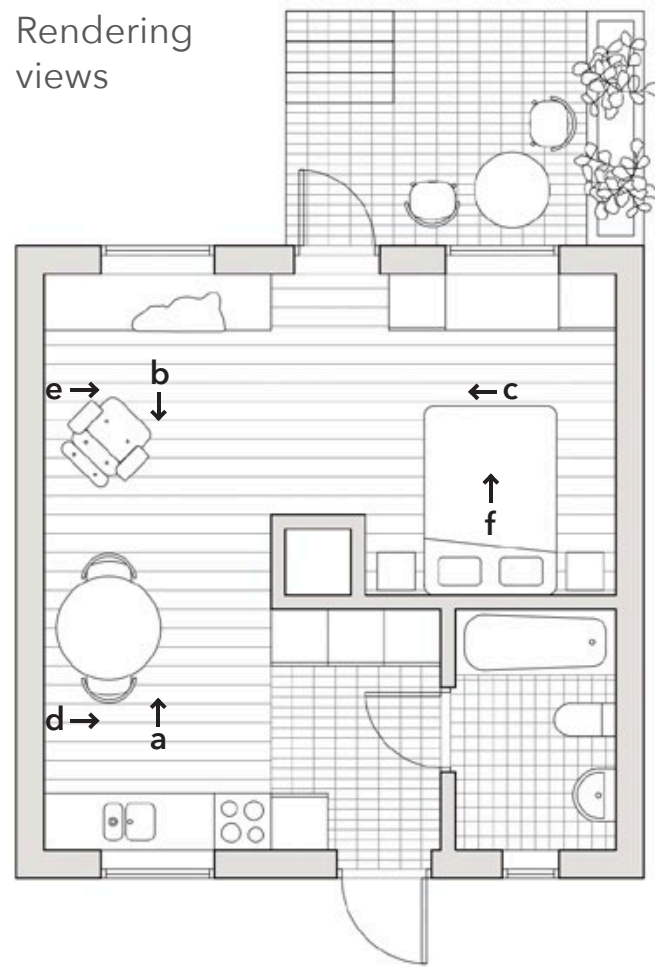
Communal Units





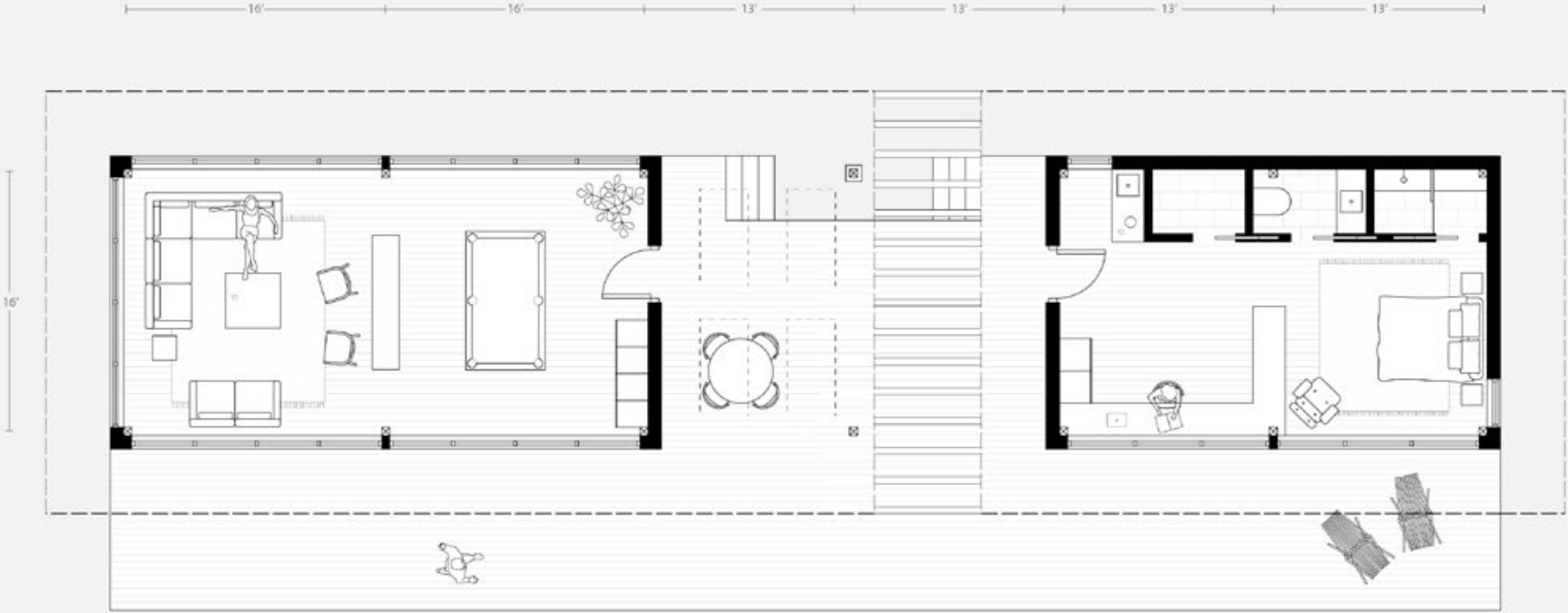


Rendering
views





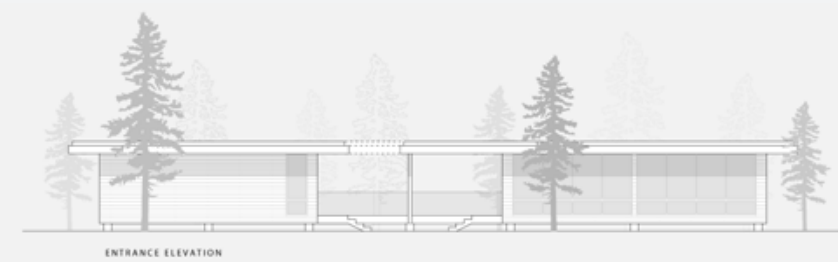
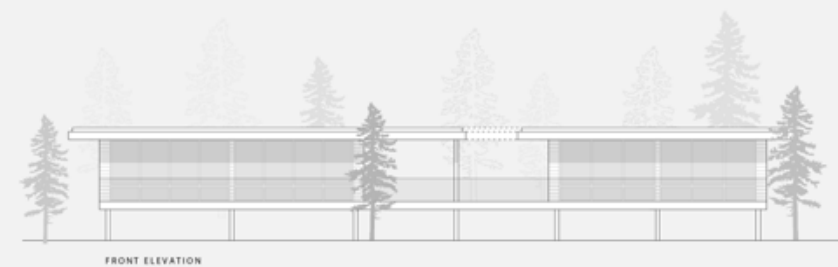
Freeman Cabin



MAFCOhouse. Haliburton, Canada

Role: Completion of all architectural drawings and renderings

This 928 sq. ft. cabin is an extension of living space for a large cottage that was previously designed by Mh. The cabin is divided into two modules; one which accommodates an entertainment space, and the other with an office, sleeping quarters, a kitchenette, and a bathroom. The modules are accessible from a central covered porch that hosts sliding privacy screens across both elevations. A large deck with expansive lake views extends the length of the entire building.



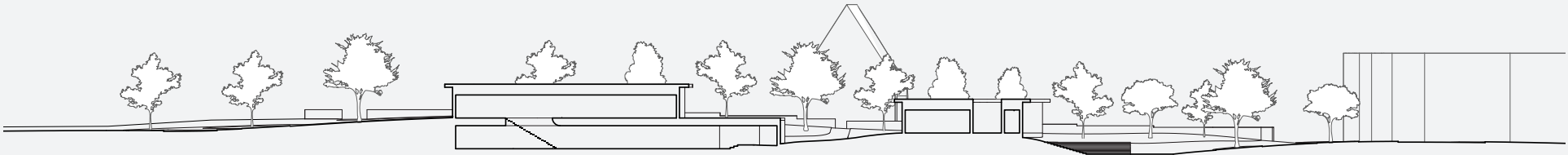


Perceptible Encounters

Perceptible Encounters is a centre for the arts and crafts with the objective of creating small moments of encounter that are prompted by human-scale interventions. These connections aim to stimulate positive experiences through both passive and active moments. Visitors may be brought closer to their senses and/or closer to one another. The project is interactive in the sense that it offers activities for people to observe or participate in, however, many moments of encounter do not rely on verbal communication.

The programme consists of workshops, exhibition spaces, receptions, a restaurant, a cafe, and an exterior amphitheatre. The spaces are distributed across the site within four buildings and corresponding outdoor areas. The varied programme creates a flexible environment that welcomes people of all age groups to pass through, to rest, and/or to return to.

Visitors will experience a shift in scale as they transition onto our site from Lund’s urban landscape. The project encourages slow movement throughout the site by means of a network of paths, outdoor spaces, and small buildings with subtle curves in their facades.



Curves

As we struggled to develop a system to define the organic shape in our facades, we turned to the subtle curves in the topography for inspiration. This choice created a strong connection between our buildings and the landscape, while simultaneously influencing the paths that visitors follow throughout the site.

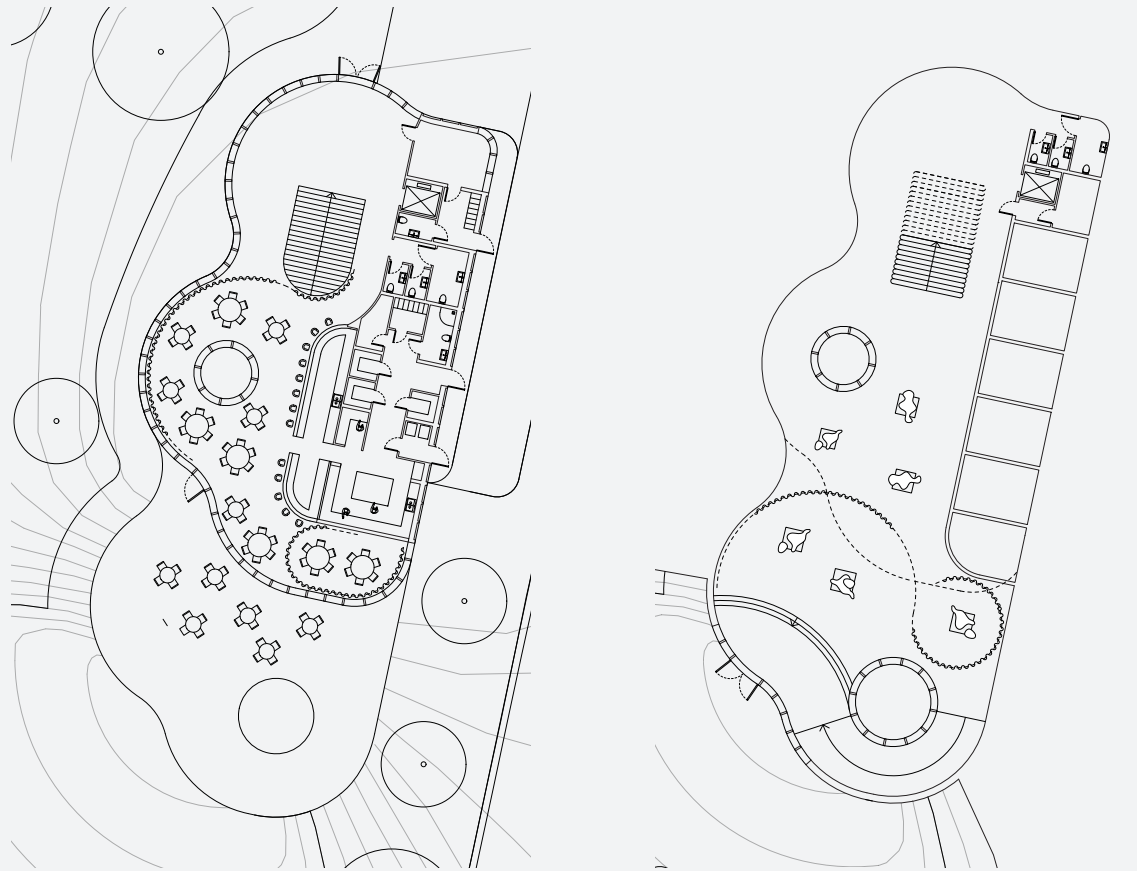
Materiality

Our palette of materials has been selected in response to the desired atmosphere and the programme of different buildings in our project. We have chosen softer materials in spaces that promote silence and slow movement. In spaces that are inherently more messy and busy, we have used rougher materials.

Main Building

Programme: Reception, restaurant, exhibition hall
Materials: wooden block, wooden panelling, fabric cast concrete, curtains

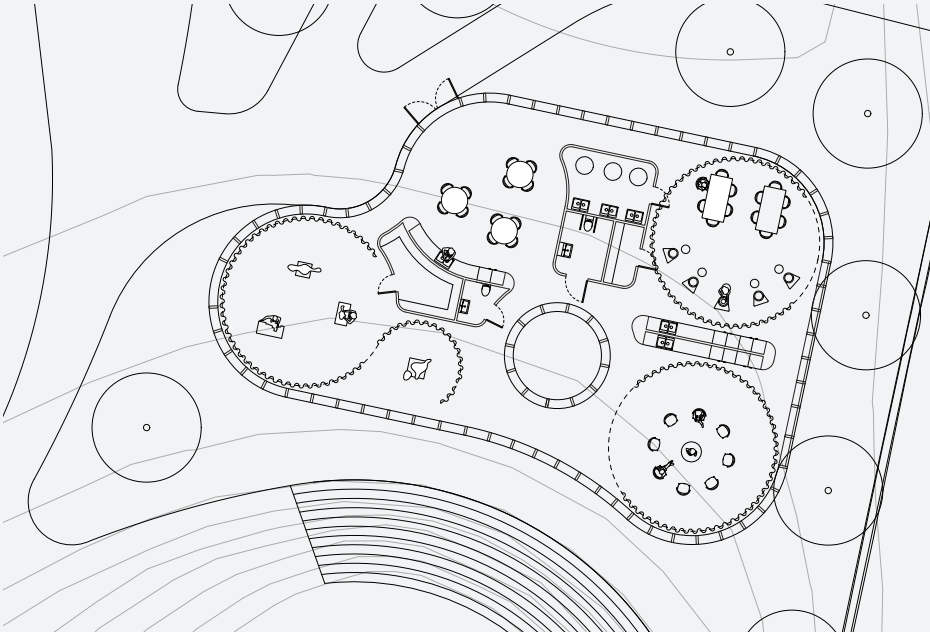
A typical experience with “title of project” may begin with a visit to the reception in the main building. Upon entering this space, the visitor’s gaze will be brought downwards towards the main exhibition hall on the lower level. The eyesight follows this direction because the long view towards the restaurant is interrupted by floor-to-ceiling curtains that softly divide the spaces on the ground level. As the visitor descends the stairs, they are met with the main exhibition hall. This space is filled with art and natural light, and is segmented by the same curtains that are on the main level.



Workshop 1

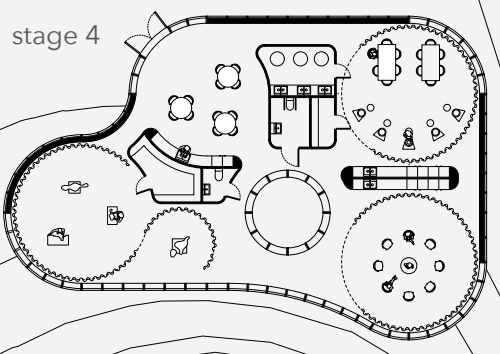
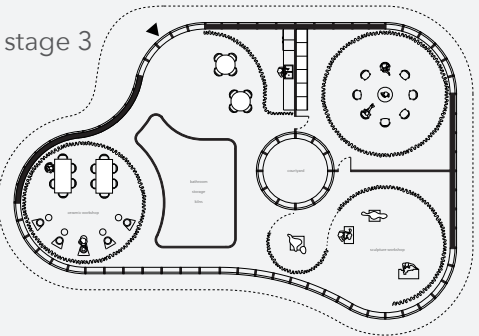
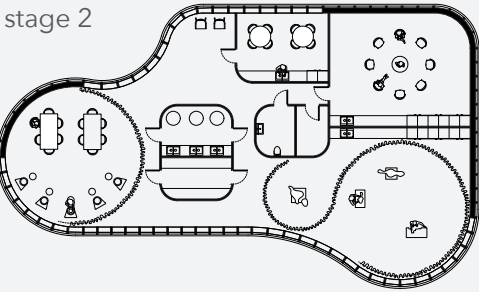
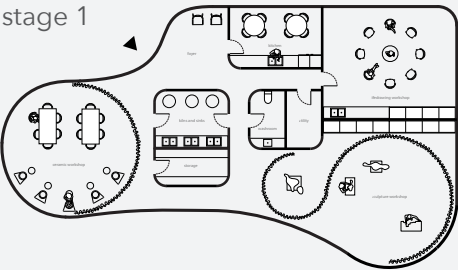
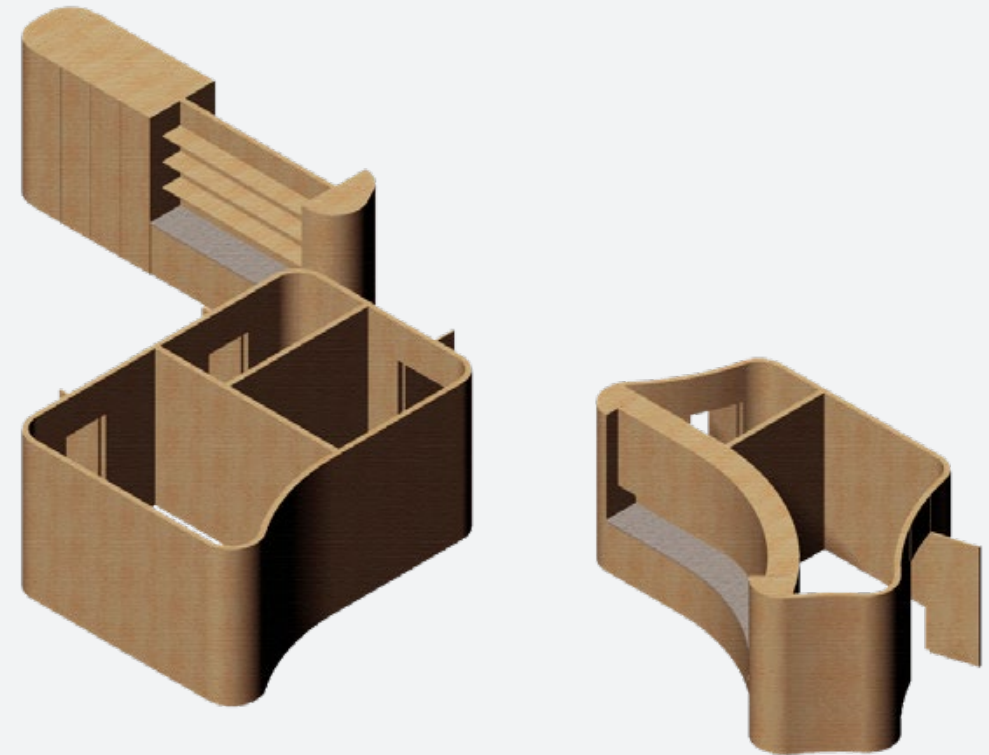
Programme: ceramic, textile, and life-drawing workshops
Materials: cobblestone, wooden panelling, plywood, curtains

As a visitor wanders through the sculpture garden, they may find themselves arriving at the first workshop building. This space is finished with rough materials such as cobblestone floors and plywood interior walls that are able to withstand the messy activities taking place inside.



Integrated Design

The process of developing the structural components of our buildings also contributed to the architecture in our project. We integrated large pillars along the facades which assign an aesthetic rhythm and change the visual impression as people move within and around the buildings. The verticality can also be justified with consideration of the pillars' role as load bearing elements of the architecture. In order to accommodate the large spans across the plans, we also integrated courtyards as additional structural components.



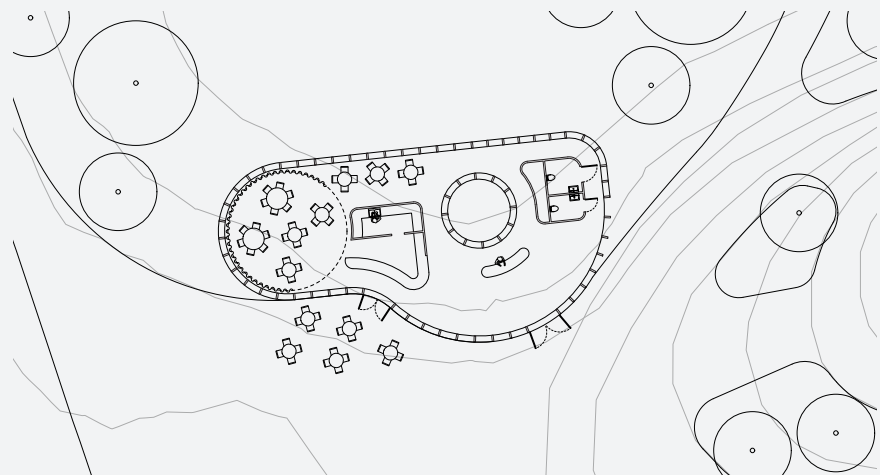


Cafe and Reception

Programme: cafe, reception, outdoor dining

Materials: wooden block, wooden panelling, fabric cast concrete, curtains

Oriented towards the South end of the site is a small cafe with a secondary reception and lounge space. The programme of the cafe extends beyond the building envelope with exterior seating that takes advantage of the sun. From this space, a visitor may wander to the amphitheatre and find alternative seating in the wide steps that cascade from the first workshop.

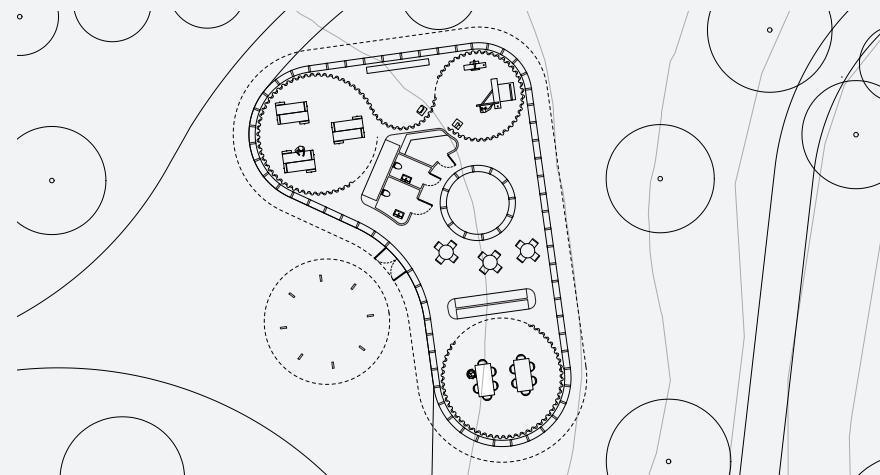


Workshop 2

Programme: wood and textile workshops

Materials: cobblestone, wooden panelling, plywood, curtains

The second workshop is strategically placed in the North-West corner of the site to avoid disturbing the other spaces with the loud noises that will come from within. With a covered outdoor space that is oriented towards the nearby pavement, the activities will attract people passing-by and invite them to discover the site.



For additional work, visit:

chloehebert.com