

Project 994

CREATED ON
2022-10-04

LOCATION
140 Goshen 1

DETAILS
Floors: 1
Rooms: 5

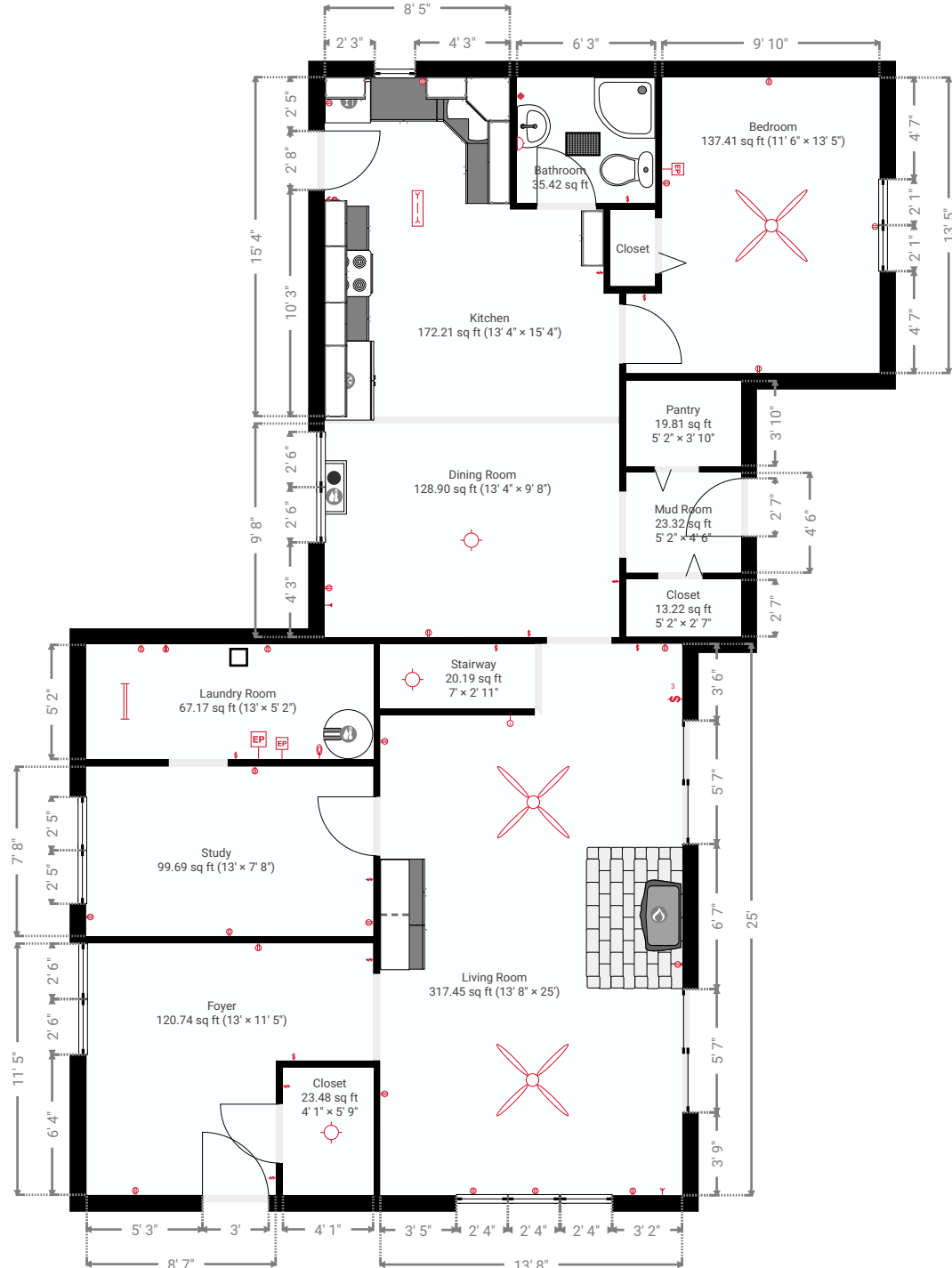
Carolina MeasurePro
168 Oakbrook Dr
27006 Advance
NC
Don@CarolinaMeasurePro.com
CarolinaMeasurePro.com
336-355-7971

This floor plan is provided without warranty as to its absolute accuracy. Not to be used for construction purposes.



▼ **1st Floor**

ROOMS: 5



Project 994

CREATED ON
2022-10-04

LOCATION
140 Goshen 1

Total area 1371.57 sq ft	Floors 1	Rooms 5	Bathroom 1
------------------------------------	--------------------	-------------------	----------------------

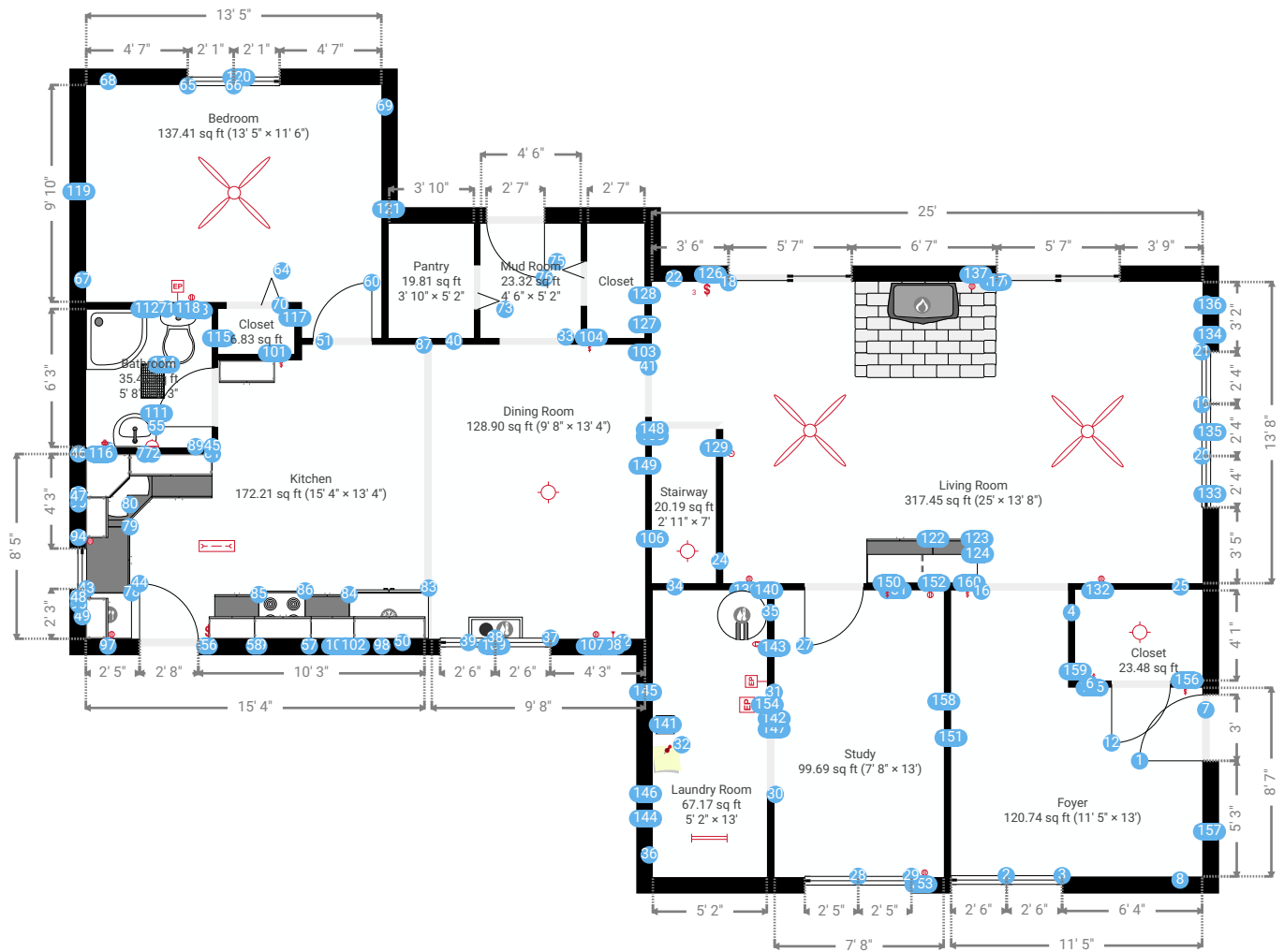
Project 994

140 Goshen 1

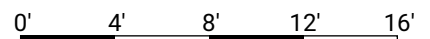
TOTAL AREA: 1371.57 sq ft • LIVING AREA: 1371.57 sq ft • FLOORS: 1 • ROOMS: 5

▼ 1st Floor

TOTAL AREA: 1371.57 sq ft • LIVING AREA: 1371.57 sq ft • ROOMS: 5



This floor plan is provided without warranty as to absolute accuracy. Not to be used for construction purposes.



Project 994

140 Goshen 1

TOTAL AREA: 1371.57 sq ft • LIVING AREA: 1371.57 sq ft • FLOORS: 1 • ROOMS: 5

▼ 1st Floor

Interior Wall Thickness

4"

Exterior Wall Thickness

9"

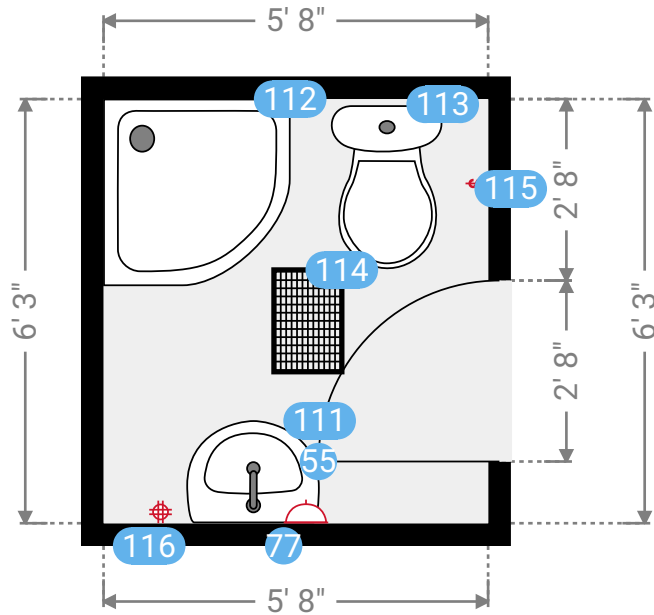
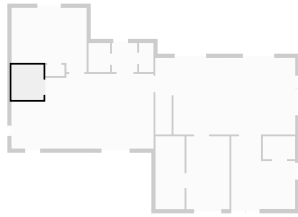
Project 994

140 Goshen 1

TOTAL AREA: 1371.57 sq ft • LIVING AREA: 1371.57 sq ft • FLOORS: 1 • ROOMS: 5

▼ Bathroom 1st Floor

WIDTH: 5' 8" • LENGTH: 6' 3"
AREA: 35.42 sq ft • PERIMETER: 23' 10"



▼ Bathroom/1st Floor

55 HINGED DOOR

Dimensions

2' 8" x 6' 8" (Width x Height)



77 WALL SCONCE

Dimensions

8" x 8" (Width x Height)

Distance to Floor

6' 8"



111 PEDESTAL SINK

Dimensions

2' x 1' 6" x 3' 2" (Width x Depth x Height)



112 QUADRANT SHOWER

Dimensions

2' 9" x 2' 9" x 6' 11" (Width x Depth x Height)



This floor plan is provided without warranty as to absolute accuracy. Not to be used for construction purposes.



1:34

Project 994

140 Goshen 1

TOTAL AREA: 1371.57 sq ft • LIVING AREA: 1371.57 sq ft • FLOORS: 1 • ROOMS: 5

▼ Bathroom/1st Floor

113 TOILET

Dimensions

1' 8" x 2' 5" x 3' (Width x Depth x Height)



114 CEILING AIR VENT

Dimensions

1' x 1' 6" x 1" (Width x Depth x Height)



115 SWITCH

Dimensions

4" x 4" (Width x Height)

Distance to Floor

3' 5"



116 FOURPLEX OUTLET

Dimensions

4" x 4" (Width x Height)

Distance to Floor

3' 6"



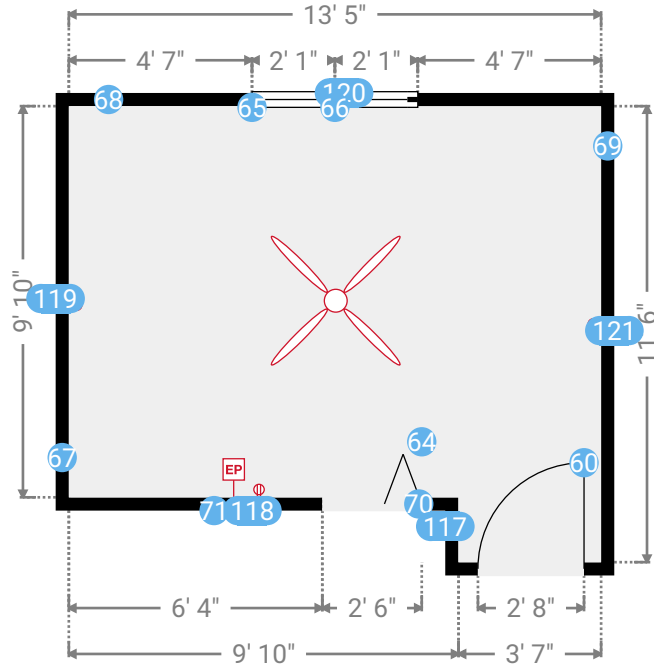
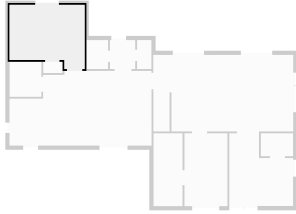
Project 994

140 Goshen 1

TOTAL AREA: 1371.57 sq ft • LIVING AREA: 1371.57 sq ft • FLOORS: 1 • ROOMS: 5

▼ Bedroom 1st Floor

WIDTH: 13' 5" • LENGTH: 11' 6" • CEILING HEIGHT: 8' 1"
AREA: 137.41 sq ft • PERIMETER: 49' 8"



▼ Bedroom/1st Floor

60 HINGED DOOR

Dimensions

2' 8" x 6' 8" (Width x Height)



64 FOLDING DOOR

Dimensions

2' 6" x 6' 8" (Width x Height)



65 FIXED WINDOW

Dimensions

2' 1" x 3' 1" (Width x Height)

Distance to Floor

3' 6"



66 FIXED WINDOW

Dimensions

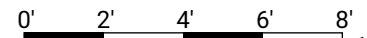
2' 1" x 3' 1" (Width x Height)

Distance to Floor

3' 6"



This floor plan is provided without warranty as to absolute accuracy. Not to be used for construction purposes.



1:58

Project 994

140 Goshen 1

TOTAL AREA: 1371.57 sq ft • LIVING AREA: 1371.57 sq ft • FLOORS: 1 • ROOMS: 5

▼ Bedroom/1st Floor

67 WALL

Length

9' 10"

Photo

1 Photo (see photos page)



68 WALL

Length

13' 5"

Photo

1 Photo (see photos page)



69 WALL

Length

11' 6"

Photo

1 Photo (see photos page)



70 WALL

Length

9' 10"

Photo

1 Photo (see photos page)



71 ELECTRICAL PANEL

Circuit Number

1

Dimensions

1' x 1' 5" (Width x Height)

Distance to Floor

4' 7"



117 SWITCH

Dimensions

4" x 4" (Width x Height)

Distance to Floor

3' 10"



118 DUPLEX OUTLET

Dimensions

4" x 4" (Width x Height)



This floor plan is provided without warranty as to absolute accuracy. Not to be used for construction purposes.

Project 994

140 Goshen 1

TOTAL AREA: 1371.57 sq ft • LIVING AREA: 1371.57 sq ft • FLOORS: 1 • ROOMS: 5

▼ Bedroom/1st Floor

118 DUPLEX OUTLET

Distance to Floor

1'



119 DUPLEX OUTLET

Dimensions

4" x 4" (Width x Height)

Distance to Floor

1'



120 DUPLEX OUTLET

Dimensions

4" x 4" (Width x Height)

Distance to Floor

1'



121 DUPLEX OUTLET

Dimensions

4" x 4" (Width x Height)

Distance to Floor

1'

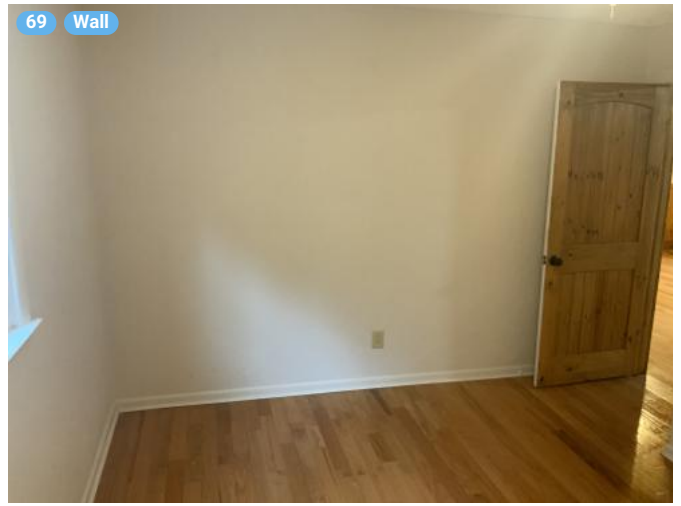


Project 994

140 Goshen 1

TOTAL AREA: 1371.57 sq ft • LIVING AREA: 1371.57 sq ft • FLOORS: 1 • ROOMS: 5

▼ Photos/Bedroom



This floor plan is provided without warranty as to absolute accuracy. Not to be used for construction purposes.

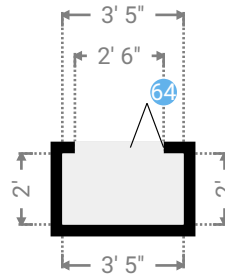
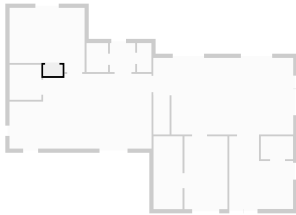
Project 994

140 Goshen 1

TOTAL AREA: 1371.57 sq ft • LIVING AREA: 1371.57 sq ft • FLOORS: 1 • ROOMS: 5

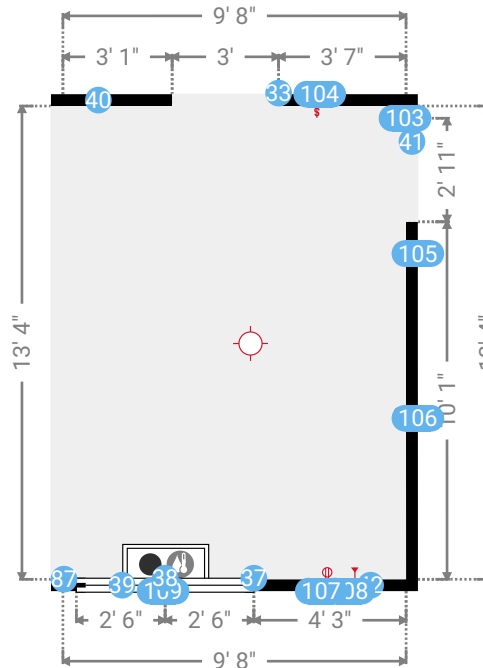
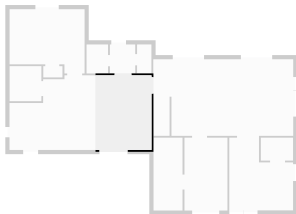
▼ Closet 1st Floor

WIDTH: 3' 5" • LENGTH: 2'
AREA: 6.83 sq ft • PERIMETER: 10' 10"



▼ Dining Room 1st Floor

WIDTH: 9' 8" • LENGTH: 13' 4" • CEILING HEIGHT: 7' 10"
AREA: 128.90 sq ft • PERIMETER: 46'



This floor plan is provided without warranty as to absolute accuracy. Not to be used for construction purposes.



Project 994

140 Goshen 1

TOTAL AREA: 1371.57 sq ft • LIVING AREA: 1371.57 sq ft • FLOORS: 1 • ROOMS: 5

▼ Dining Room/1st Floor

37 FIXED WINDOW

Dimensions

2' 6" x 4' 10" (Width x Height)

Distance to Floor

1' 9"



38 FIXED WINDOW

Dimensions

2' 6" x 4' 10" (Width x Height)

Distance to Floor

1' 9"



39 WALL GAS WATER HEATER

Dimensions

0 x 0 x 0 (Width x Depth x Height)

Distance to Floor

0



40 WALL

Length

9' 8"

Photo

1 Photo (see photos page)



41 WALL

Length

13' 4"

Photo

1 Photo (see photos page)



42 WALL

Length

9' 8"

Photo

1 Photo (see photos page)



103 OPENING

Dimensions

2' 11" x 6' 8" (Width x Height)



This floor plan is provided without warranty as to absolute accuracy. Not to be used for construction purposes.

Project 994

140 Goshen 1

TOTAL AREA: 1371.57 sq ft • LIVING AREA: 1371.57 sq ft • FLOORS: 1 • ROOMS: 5

▼ Dining Room/1st Floor

104 SWITCH

Dimensions

4" x 4" (Width x Height)

Distance to Floor

3' 10"



105 SWITCH

Dimensions

4" x 4" (Width x Height)

Distance to Floor

3' 9"



106 DUPLEX OUTLET

Dimensions

4" x 4" (Width x Height)

Distance to Floor

11"



107 DUPLEX OUTLET

Dimensions

4" x 4" (Width x Height)

Distance to Floor

11"



108 TELEPHONE CABLE

Dimensions

4" x 4" (Width x Height)

Distance to Floor

10"



109 DUPLEX OUTLET

Dimensions

4" x 4" (Width x Height)

Distance to Floor

11"



Project 994

140 Goshen 1

TOTAL AREA: 1371.57 sq ft • LIVING AREA: 1371.57 sq ft • FLOORS: 1 • ROOMS: 5

▼ Photos/Dining Room



This floor plan is provided without warranty as to absolute accuracy. Not to be used for construction purposes.

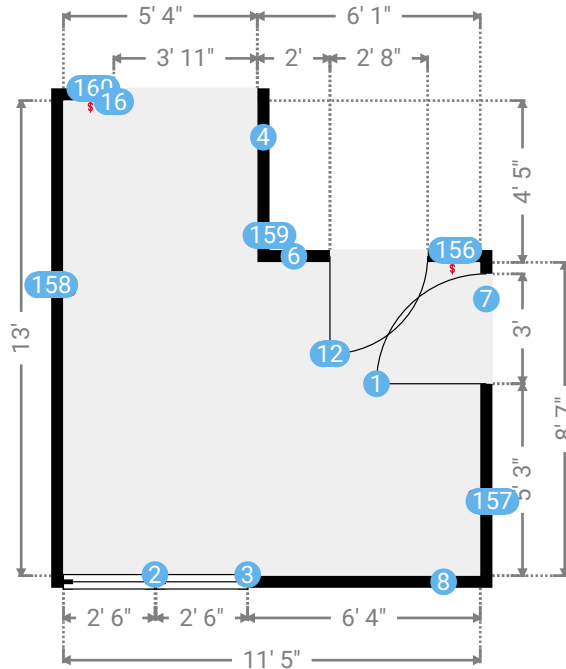
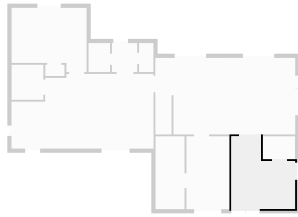
Project 994

140 Goshen 1

TOTAL AREA: 1371.57 sq ft • LIVING AREA: 1371.57 sq ft • FLOORS: 1 • ROOMS: 5

▼ Foyer 1st Floor

WIDTH: 11' 5" • LENGTH: 13' • CEILING HEIGHT: 7' 11"
AREA: 120.74 sq ft • PERIMETER: 48' 8"



▼ Foyer /1st Floor

1 HINGED DOOR

Dimensions
3' x 6' 8" (Width x Height)



2 FIXED WINDOW

Dimensions
2' 6" x 4' 10" (Width x Height)



Distance to Floor
1' 10"

3 FIXED WINDOW

Dimensions
2' 6" x 4' 10" (Width x Height)



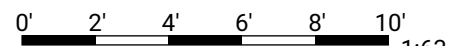
Distance to Floor
1' 10"

4 WALL

Length
4' 5"



This floor plan is provided without warranty as to absolute accuracy. Not to be used for construction purposes.



Project 994

140 Goshen 1

TOTAL AREA: 1371.57 sq ft • LIVING AREA: 1371.57 sq ft • FLOORS: 1 • ROOMS: 5

▼ Foyer /1st Floor

4 WALL

Photo

1 Photo (see photos page)



6 WALL

Length

6' 1"

Photo

1 Photo (see photos page)



7 WALL

Length

8' 7"

Photo

1 Photo (see photos page)



8 WALL

Length

11' 5"

Photo

1 Photo (see photos page)



12 HINGED DOOR

Dimensions

2' 8" x 6' 8" (Width x Height)



16 OPENING

Dimensions

3' 11" x 6' 8" (Width x Height)



156 SWITCH

Dimensions

4" x 4" (Width x Height)

Distance to Floor

3' 7"



157 DUPLEX OUTLET

Dimensions

4" x 4" (Width x Height)

Distance to Floor

11"



This floor plan is provided without warranty as to absolute accuracy. Not to be used for construction purposes.

Project 994

140 Goshen 1

TOTAL AREA: 1371.57 sq ft • LIVING AREA: 1371.57 sq ft • FLOORS: 1 • ROOMS: 5

▼ Foyer /1st Floor

158 DUPLEX OUTLET

Dimensions

4" x 4" (Width x Height)

Distance to Floor

11"



159 SWITCH

Dimensions

4" x 4" (Width x Height)

Distance to Floor

4'



160 SWITCH

Dimensions

4" x 4" (Width x Height)

Distance to Floor

3' 7"

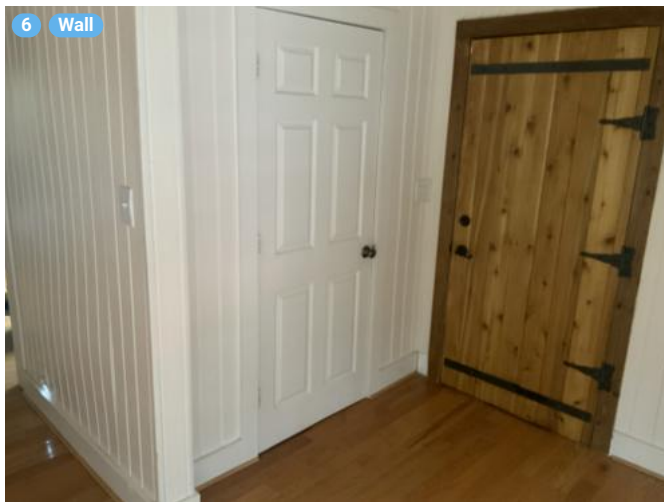
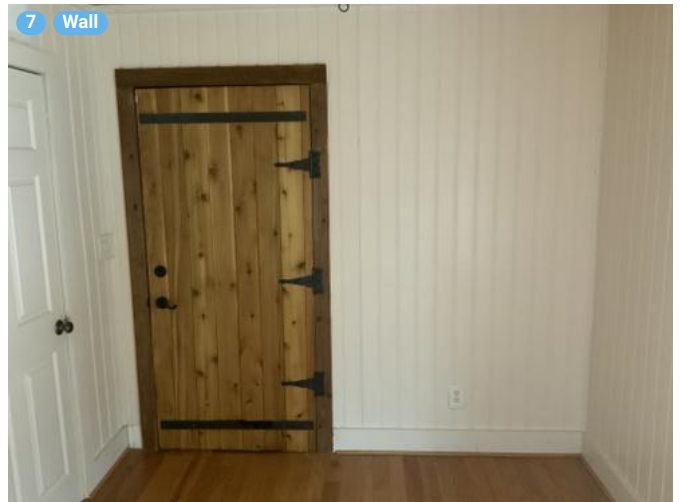
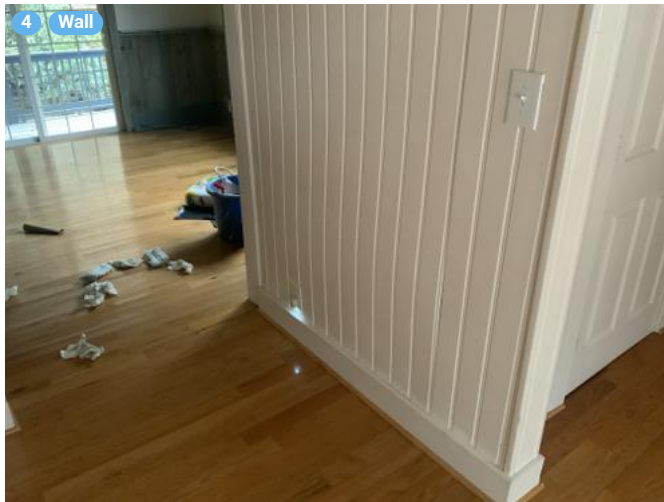


Project 994

140 Goshen 1

TOTAL AREA: 1371.57 sq ft • LIVING AREA: 1371.57 sq ft • FLOORS: 1 • ROOMS: 5

▼ Photos/Foyer



This floor plan is provided without warranty as to absolute accuracy. Not to be used for construction purposes.

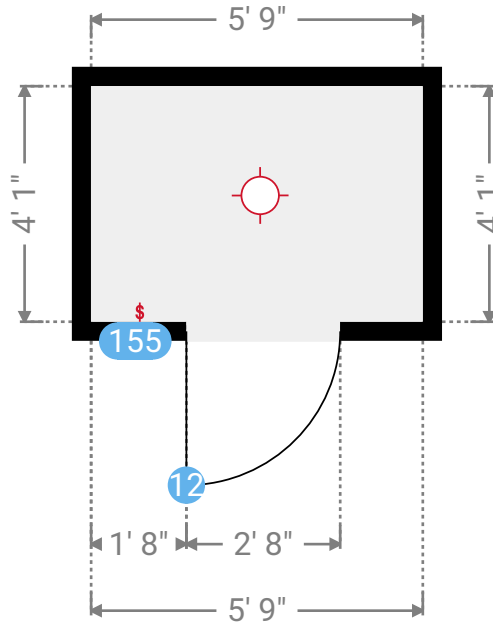
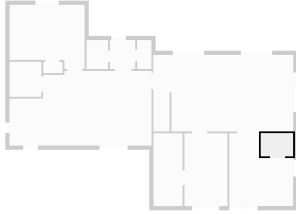
Project 994

140 Goshen 1

TOTAL AREA: 1371.57 sq ft • LIVING AREA: 1371.57 sq ft • FLOORS: 1 • ROOMS: 5

▼ Closet 1st Floor

WIDTH: 5' 9" • LENGTH: 4' 1" • CEILING HEIGHT: 7' 11"
AREA: 23.48 sq ft • PERIMETER: 19' 8"



▼ Closet/1st Floor

155 SWITCH

Dimensions

4" x 4" (Width x Height)

Distance to Floor

3' 1"

\$ 1

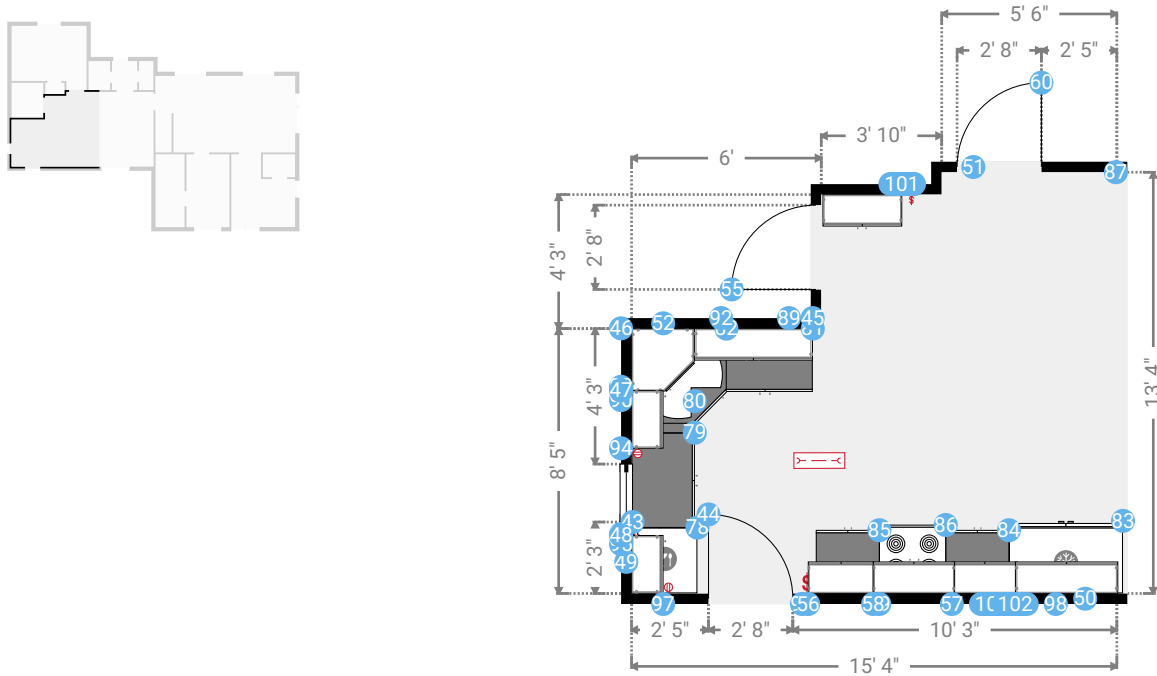
Project 994

140 Goshen 1

TOTAL AREA: 1371.57 sq ft • LIVING AREA: 1371.57 sq ft • FLOORS: 1 • ROOMS: 5

▼ Kitchen 1st Floor

WIDTH: 15' 4" • LENGTH: 13' 4" • CEILING HEIGHT: 7' 10"
AREA: 172.21 sq ft • PERIMETER: 57' 4"



▼ Kitchen/1st Floor

43 FIXED WINDOW

Dimensions

1' 10" x 3' (Width x Height)

Distance to Floor

3' 4"



44 HINGED DOOR

Dimensions

2' 8" x 6' 6" (Width x Height)



45 DOUBLE CAB. (RESIZABLE)

Dimensions

3' 9" x 2' 8" (Width x Height)

Distance to Floor

4' 5"



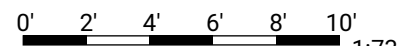
46 RIGHT CORNER WALL CAB. 24"

Dimensions

2' x 2' 8" (Width x Height)



This floor plan is provided without warranty as to absolute accuracy. Not to be used for construction purposes.



1:73

Project 994

140 Goshen 1

TOTAL AREA: 1371.57 sq ft • LIVING AREA: 1371.57 sq ft • FLOORS: 1 • ROOMS: 5

▼ Kitchen/1st Floor

46 RIGHT CORNER WALL CAB. 24"

Distance to Floor

4' 5"



47 SINGLE CAB. (RESIZABLE)

Dimensions

1' 10" x 2' 8" (Width x Height)

Distance to Floor

4' 5"



48 SINGLE CAB. (RESIZABLE)

Dimensions

1' 10" x 2' 8" (Width x Height)

Distance to Floor

4' 5"



49 WALL

Length

8' 5"

Photo

1 Photo (see photos page)



50 WALL

Length

15' 4"

Photo

1 Photo (see photos page)



51 WALL

Length

5' 6"

Photo

1 Photo (see photos page)



52 WALL

Length

6'

Photo

1 Photo (see photos page)



This floor plan is provided without warranty as to absolute accuracy. Not to be used for construction purposes.

Project 994

140 Goshen 1

TOTAL AREA: 1371.57 sq ft • LIVING AREA: 1371.57 sq ft • FLOORS: 1 • ROOMS: 5

▼ Kitchen/1st Floor

56 DOUBLE CAB. (RESIZABLE)

Dimensions

2' 1" x 2' 7" (Width x Height)

Distance to Floor

4' 5"



57 DOUBLE CAB. (RESIZABLE)

Dimensions

2' 1" x 2' 7" (Width x Height)

Distance to Floor

4' 5"



58 DOUBLE CAB. (RESIZABLE)

Dimensions

2' 7" x 2' 11" (Width x Height)

Distance to Floor

5' 2"



78 DISHWASHER

Dimensions

2' 1" x 2' 1" x 3' (Width x Depth x Height)



79 BASE CABINET 36"

Dimensions

3' x 2' x 2' 11" (Width x Depth x Height)



80 BASE CABINET 12"

Dimensions

1' x 2' x 2' 11" (Width x Depth x Height)



81 BASE CABINET 36"

Dimensions

3' x 2' x 2' 11" (Width x Depth x Height)



82 CAROUSEL BASE CABINET 36"

Dimensions

3' x 3' x 2' 11" (Width x Depth x Height)



83 TWO-DOOR REFRIGERATOR

Dimensions

3' 7" x 2' 4" x 6' 7" (Width x Depth x Height)



This floor plan is provided without warranty as to absolute accuracy. Not to be used for construction purposes.

Project 994

140 Goshen 1

TOTAL AREA: 1371.57 sq ft • LIVING AREA: 1371.57 sq ft • FLOORS: 1 • ROOMS: 5

▼ Kitchen/1st Floor

84 BASE CABINET (RESIZABLE)

Dimensions

2' x 2' x 2' 11" (Width x Depth x Height)



85 BASE CABINET (RESIZABLE)

Dimensions

2' x 2' x 2' 11" (Width x Depth x Height)



86 ELECTRIC STOVE

Dimensions

2' 1" x 2' 2" x 3' 2" (Width x Depth x Height)



87 OPENING

Dimensions

13' 4" x 0 (Width x Height)



88 SWITCH

Dimensions

4" x 4" (Width x Height)

Distance to Floor

3' 10"



89 GROUND FAULT DUPLEX OUTLET

Dimensions

4" x 4" (Width x Height)

Distance to Floor

3' 6"



90 SWITCH

Dimensions

4" x 3' 6" (Width x Height)

Distance to Floor

3' 10"



91 SWITCH

Dimensions

8" x 3' 10" (Width x Height)

Distance to Floor

3' 10"



92 DUPLEX OUTLET

Dimensions

4" x 4" (Width x Height)



This floor plan is provided without warranty as to absolute accuracy. Not to be used for construction purposes.

Project 994

140 Goshen 1

TOTAL AREA: 1371.57 sq ft • LIVING AREA: 1371.57 sq ft • FLOORS: 1 • ROOMS: 5

▼ Kitchen/1st Floor

92 DUPLEX OUTLET

Distance to Floor

3' 7"



93 DUPLEX OUTLET

Dimensions

4" x 4" (Width x Height)

Distance to Floor

3' 7"



94 DUPLEX OUTLET

Dimensions

4" x 4" (Width x Height)

Distance to Floor

3' 7"



95 DUPLEX OUTLET

Dimensions

4" x 4" (Width x Height)

Distance to Floor

3' 7"



96 SWITCH

Dimensions

4" x 3' 6" (Width x Height)

Distance to Floor

3' 10"



97 DUPLEX OUTLET

Dimensions

4" x 4" (Width x Height)

Distance to Floor

3' 7"



98 DUPLEX OUTLET

Dimensions

4" x 4" (Width x Height)

Distance to Floor

3' 7"



99 GROUND FAULT DUPLEX OUTLET

Dimensions

4" x 4" (Width x Height)



This floor plan is provided without warranty as to absolute accuracy. Not to be used for construction purposes.

Project 994

140 Goshen 1

TOTAL AREA: 1371.57 sq ft • LIVING AREA: 1371.57 sq ft • FLOORS: 1 • ROOMS: 5

▼ Kitchen/1st Floor

99 GROUND FAULT DUPLEX OUTLET

Distance to Floor

3' 6"



100 GROUND FAULT DUPLEX OUTLET

Dimensions

4" x 4" (Width x Height)

Distance to Floor

3' 6"



101 DOUBLE CAB. (RESIZABLE)

Dimensions

2' 6" x 2' 11" (Width x Height)



102 DOUBLE CAB. (RESIZABLE)

Dimensions

3' 3" x 1' 2" (Width x Height)

Distance to Floor

5' 11"



Project 994

140 Goshen 1

TOTAL AREA: 1371.57 sq ft • LIVING AREA: 1371.57 sq ft • FLOORS: 1 • ROOMS: 5

▼ Photos/Kitchen



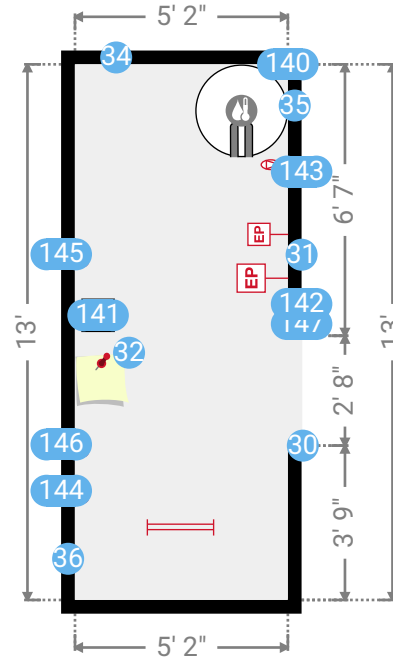
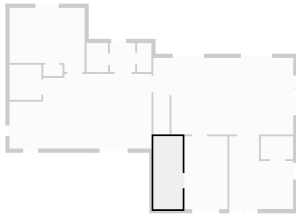
This floor plan is provided without warranty as to absolute accuracy. Not to be used for construction purposes.

Project 994

140 Goshen 1
TOTAL AREA: 1371.57 sq ft • LIVING AREA: 1371.57 sq ft • FLOORS: 1 • ROOMS: 5

▼ Laundry Room 1st Floor

WIDTH: 5' 2" • LENGTH: 13' • CEILING HEIGHT: 8' 1"
AREA: 67.17 sq ft • PERIMETER: 36' 4"



▼ Laundry Room/1st Floor

31 ELECTRICAL PANEL

Circuit Number
C

Dimensions
1' x 1' 11" (Width x Height)

Distance to Floor
4' 3"



32 ANNOTATION

Notes
Dryer Vent 4' 2" Above Floor



34 WALL

Length
5' 2"

Photos
2 Photos (see photos page)



Project 994

140 Goshen 1

TOTAL AREA: 1371.57 sq ft • LIVING AREA: 1371.57 sq ft • FLOORS: 1 • ROOMS: 5

▼ Laundry Room/1st Floor

35 WALL

Length

13'

Photo

1 Photo (see photos page)



36 WALL

Length

13'

Photo

1 Photo (see photos page)



140 ELECTRICAL WATER HEATER

Dimensions

2' 3" x 2' 3" x 6' 7" (Width x Depth x Height)



141 WASHER TAP

Dimensions

9" x 9" x 2' 4" (Width x Depth x Height)

142 ELECTRICAL PANEL

Dimensions

1' 3" x 2' 10" (Width x Height)

Distance to Floor

4' 3"



143 SPECIAL-PURPOSE OUTLET

Dimensions

4" x 5" (Width x Height)

Distance to Floor

4' 6"



144 DUPLEX OUTLET

Dimensions

4" x 4" (Width x Height)

Distance to Floor

3' 7"



145 DUPLEX OUTLET

Dimensions

4" x 4" (Width x Height)



This floor plan is provided without warranty as to absolute accuracy. Not to be used for construction purposes.

Project 994

140 Goshen 1

TOTAL AREA: 1371.57 sq ft • LIVING AREA: 1371.57 sq ft • FLOORS: 1 • ROOMS: 5

▼ Laundry Room/1st Floor

145 DUPLEX OUTLET

Distance to Floor

3' 7"



146 220V OUTLET

Dimensions

4" x 4" (Width x Height)

Distance to Floor

1'



147 SWITCH

Dimensions

4" x 4" (Width x Height)

Distance to Floor

3' 9"

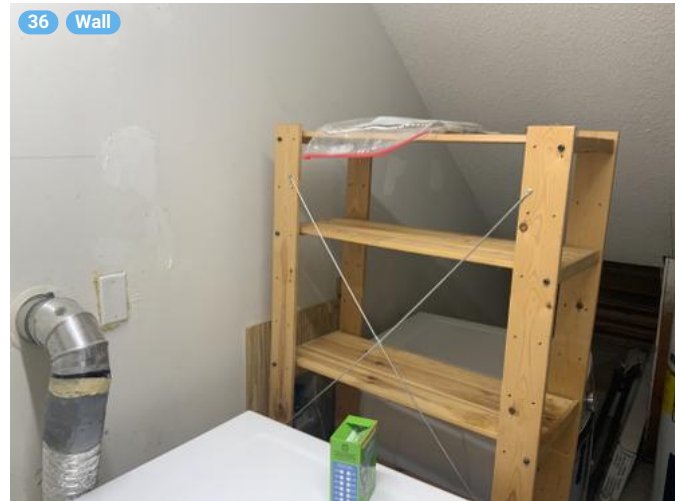
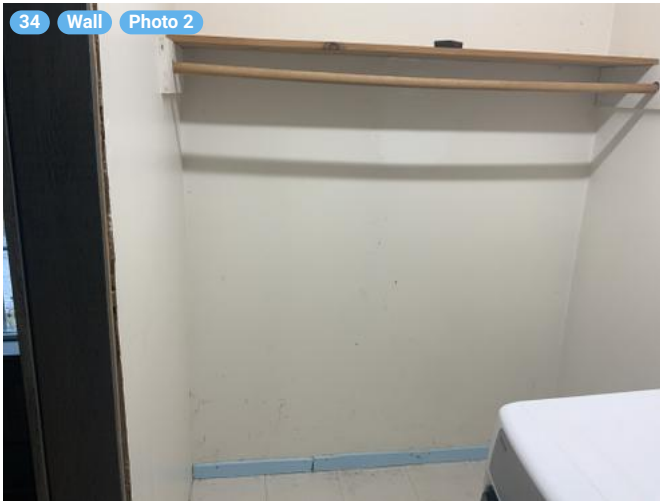


Project 994

140 Goshen 1

TOTAL AREA: 1371.57 sq ft • LIVING AREA: 1371.57 sq ft • FLOORS: 1 • ROOMS: 5

▼ Photos/Laundry Room



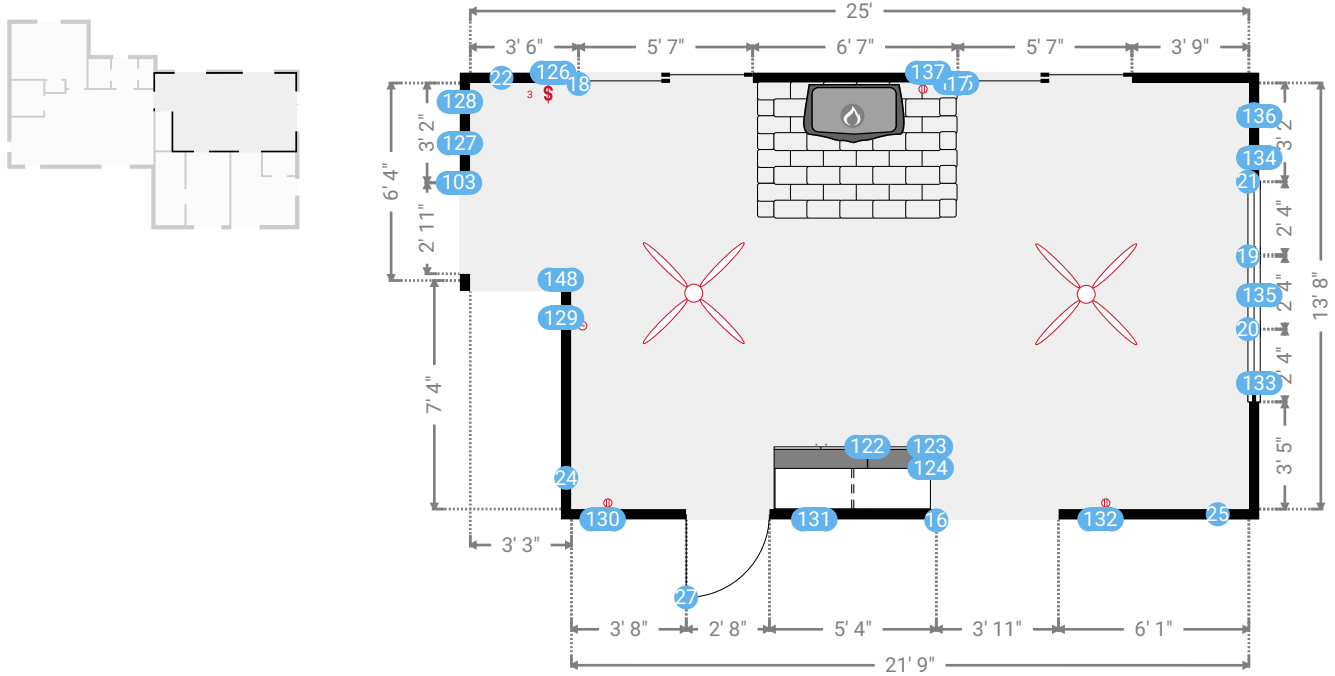
Project 994

140 Goshen 1

TOTAL AREA: 1371.57 sq ft • LIVING AREA: 1371.57 sq ft • FLOORS: 1 • ROOMS: 5

▼ Living Room 1st Floor

WIDTH: 25' • LENGTH: 13' 8" • CEILING HEIGHT: 7' 11"
AREA: 317.45 sq ft • PERIMETER: 77' 3"



▼ Living Room/1st Floor

17 PATIO DOOR

Dimensions

5' 7" x 6' 8" (Width x Height)



18 PATIO DOOR

Dimensions

5' 7" x 6' 8" (Width x Height)



19 FIXED WINDOW

Dimensions

2' 4" x 3' 1" (Width x Height)

Distance to Floor

3' 10"



20 FIXED WINDOW

Dimensions

2' 4" x 3' 1" (Width x Height)

Distance to Floor

3' 10"



This floor plan is provided without warranty as to absolute accuracy. Not to be used for construction purposes.



1:74

Project 994

140 Goshen 1

TOTAL AREA: 1371.57 sq ft • LIVING AREA: 1371.57 sq ft • FLOORS: 1 • ROOMS: 5

▼ Living Room/1st Floor

21 FIXED WINDOW

Dimensions

2' 4" x 3' 1" (Width x Height)

Distance to Floor

3' 10"



22 WALL

Length

25'

Photos

2 Photos (see photos page)



23 WALL

Length

13' 8"

Photo

1 Photo (see photos page)



24 WALL

Length

7' 4"

Photo

1 Photo (see photos page)



25 WALL

Length

21' 9"

Photos

2 Photos (see photos page)



122 BASE CABINET (RESIZABLE)

Dimensions

3' x 2' x 2' 11" (Width x Depth x Height)



123 BASE CABINET 24"

Dimensions

2' x 2' x 2' 11" (Width x Depth x Height)



124 BOOKCASE

Dimensions

5' x 1' 4" x 6' 7" (Width x Depth x Height)



This floor plan is provided without warranty as to absolute accuracy. Not to be used for construction purposes.

Project 994

140 Goshen 1

TOTAL AREA: 1371.57 sq ft • LIVING AREA: 1371.57 sq ft • FLOORS: 1 • ROOMS: 5

▼ Living Room/1st Floor

125 BRICK PATH

Dimensions

6' 4" x 4' 4" x 0 (Width x Depth x Height)



126 SWITCH

Dimensions

8" x 4" (Width x Height)

Distance to Floor

3' 7"



127 SWITCH

Dimensions

4" x 4" (Width x Height)

Distance to Floor

3' 7"



128 DUPLEX OUTLET

Dimensions

4" x 4" (Width x Height)

Distance to Floor

4' 5"



129 THERMOSTAT

Circuit Number

.

Dimensions

6" x 4" (Width x Height)

Distance to Floor

3' 11"



130 DUPLEX OUTLET

Dimensions

4" x 4" (Width x Height)

Distance to Floor

10"



131 DUPLEX OUTLET

Dimensions

4" x 4" (Width x Height)

Distance to Floor

2' 7"



This floor plan is provided without warranty as to absolute accuracy. Not to be used for construction purposes.

Project 994

140 Goshen 1

TOTAL AREA: 1371.57 sq ft • LIVING AREA: 1371.57 sq ft • FLOORS: 1 • ROOMS: 5

▼ Living Room/1st Floor

132 DUPLEX OUTLET

Dimensions

4" x 4" (Width x Height)

Distance to Floor

10"



133 DUPLEX OUTLET

Dimensions

4" x 4" (Width x Height)

Distance to Floor

10"



134 DUPLEX OUTLET

Dimensions

4" x 4" (Width x Height)

Distance to Floor

10"



135 DUPLEX OUTLET

Dimensions

4" x 4" (Width x Height)

Distance to Floor

1"



136 TV CABLE

Dimensions

4" x 4" (Width x Height)

Distance to Floor

10"



137 DUPLEX OUTLET

Dimensions

4" x 4" (Width x Height)

Distance to Floor

10"

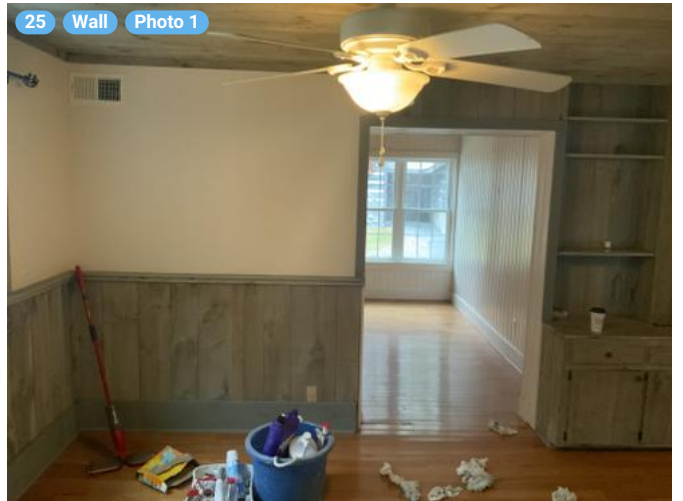


Project 994

140 Goshen 1

TOTAL AREA: 1371.57 sq ft • LIVING AREA: 1371.57 sq ft • FLOORS: 1 • ROOMS: 5

▼ Photos/Living Room



This floor plan is provided without warranty as to absolute accuracy. Not to be used for construction purposes.

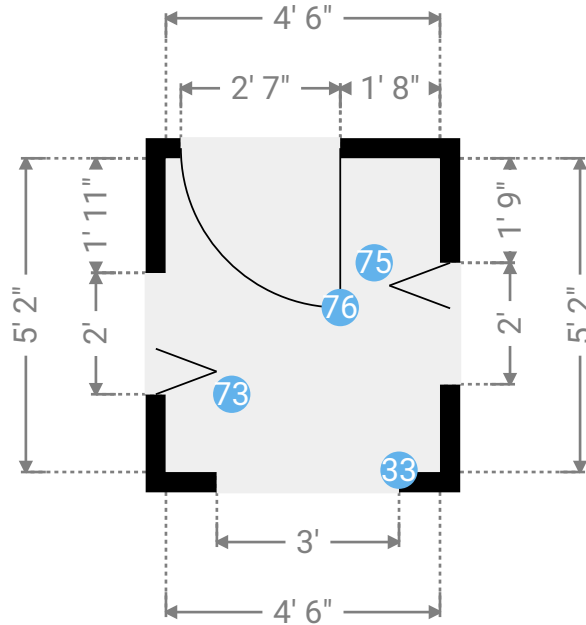
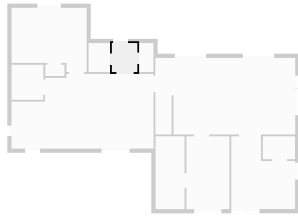
Project 994

140 Goshen 1

TOTAL AREA: 1371.57 sq ft • LIVING AREA: 1371.57 sq ft • FLOORS: 1 • ROOMS: 5

▼ Mud Room 1st Floor

WIDTH: 4' 6" • LENGTH: 5' 2"
AREA: 23.32 sq ft • PERIMETER: 19' 4"



▼ Mud Room /1st Floor

33 OPENING

Dimensions
3' x 6' 7" (Width x Height)



73 FOLDING DOOR

Dimensions
2' x 6' 8" (Width x Height)



75 FOLDING DOOR

Dimensions
2' x 6' 8" (Width x Height)



76 HINGED DOOR

Dimensions
2' 7" x 6' 7" (Width x Height)



This floor plan is provided without warranty as to absolute accuracy. Not to be used for construction purposes.



1:38

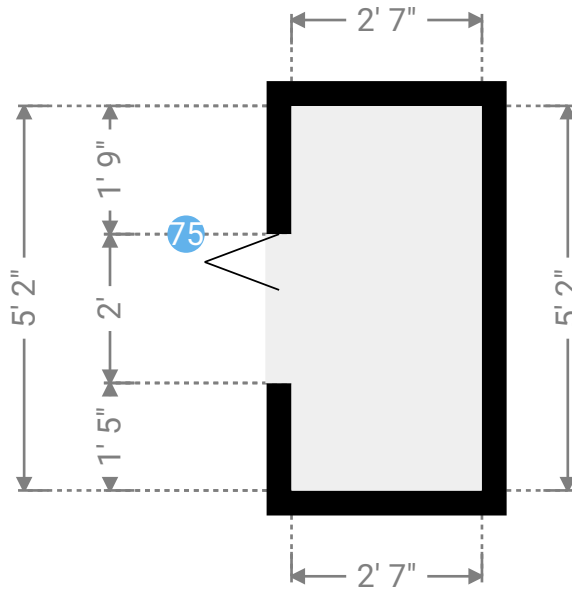
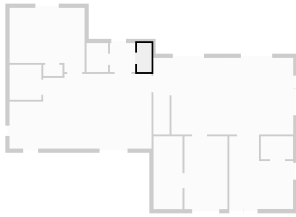
Project 994

140 Goshen 1

TOTAL AREA: 1371.57 sq ft • LIVING AREA: 1371.57 sq ft • FLOORS: 1 • ROOMS: 5

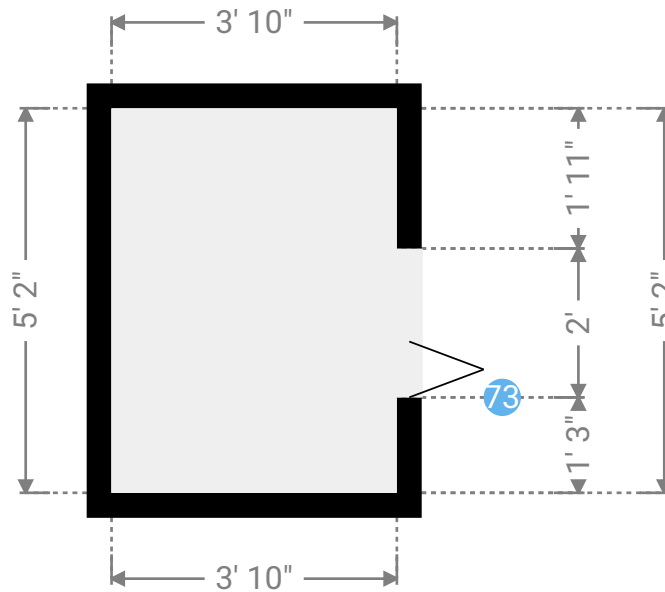
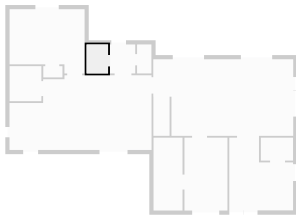
▼ Closet 1st Floor

WIDTH: 2' 7" • LENGTH: 5' 2"
AREA: 13.22 sq ft • PERIMETER: 15' 5"



▼ Pantry 1st Floor

WIDTH: 3' 10" • LENGTH: 5' 2"
AREA: 19.81 sq ft • PERIMETER: 18'



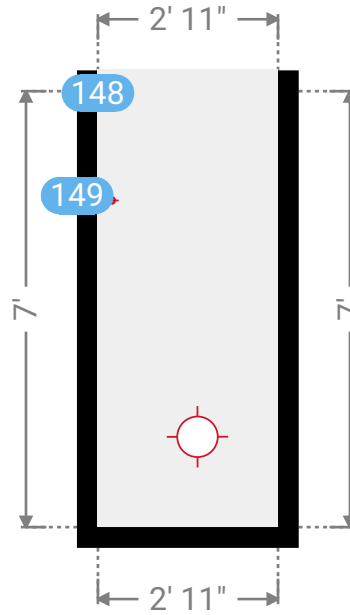
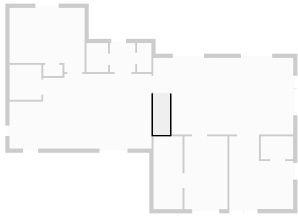
Project 994

140 Goshen 1

TOTAL AREA: 1371.57 sq ft • LIVING AREA: 1371.57 sq ft • FLOORS: 1 • ROOMS: 5

▼ Stairway 1st Floor

WIDTH: 2' 11" • LENGTH: 7'
AREA: 20.19 sq ft • PERIMETER: 19' 9"



▼ Stairway/1st Floor

148 OPENING

Dimensions

2' 11" x 0 (Width x Height)



149 SWITCH

Dimensions

4" x 4" (Width x Height)



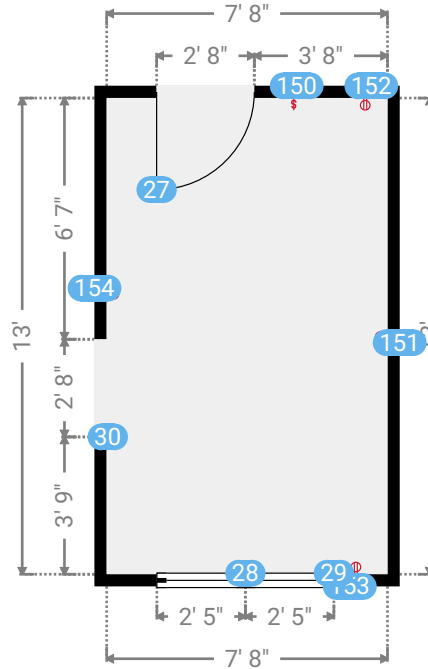
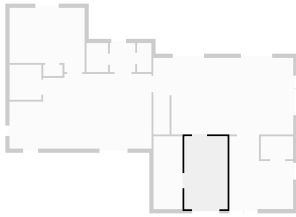
Project 994

140 Goshen 1

TOTAL AREA: 1371.57 sq ft • LIVING AREA: 1371.57 sq ft • FLOORS: 1 • ROOMS: 5

▼ Study 1st Floor

WIDTH: 7' 8" • LENGTH: 13' • CEILING HEIGHT: 7' 11"
AREA: 99.69 sq ft • PERIMETER: 41' 4"



▼ Study/1st Floor

27 HINGED DOOR

Dimensions

2' 8" x 6' 8" (Width x Height)



28 FIXED WINDOW

Dimensions

2' 5" x 4' 9" (Width x Height)

Distance to Floor

1' 11"



29 FIXED WINDOW

Dimensions

2' 5" x 4' 9" (Width x Height)

Distance to Floor

1' 11"



30 OPENING

Dimensions

2' 8" x 6' 8" (Width x Height)



This floor plan is provided without warranty as to absolute accuracy. Not to be used for construction purposes.

0' 2' 4' 6' 8' 10'

1:63

Project 994

140 Goshen 1

TOTAL AREA: 1371.57 sq ft • LIVING AREA: 1371.57 sq ft • FLOORS: 1 • ROOMS: 5

▼ Study/1st Floor

150 SWITCH

Dimensions

4" x 4" (Width x Height)

Distance to Floor

3' 6"



151 DUPLEX OUTLET

Dimensions

4" x 4" (Width x Height)

Distance to Floor

1'



152 DUPLEX OUTLET

Dimensions

4" x 4" (Width x Height)

Distance to Floor

1' 5"



153 DUPLEX OUTLET

Dimensions

4" x 4" (Width x Height)

Distance to Floor

1'



154 DUPLEX OUTLET

Dimensions

4" x 4" (Width x Height)

Distance to Floor

1'



Project 994

140 Goshen 1



Statistics

Summary

Floors	1	Bedroom	1	Windows	12	Ground surface with all walls	1371.57 sq ft	Exterior perimeter	179' 2"
Rooms	5	Bathroom	1	Doors	18	Ground surface with interior walls	1239.22 sq ft	Living area	1371.57 sq ft

1st Floor

Rooms	5	Bedroom	1	Windows	12	Ground surface with all walls	1371.57 sq ft	Exterior perimeter	173' 2"
Bathroom	1	Doors	18	Ground surface with interior walls	1239.22 sq ft				

	Volume	Ground surface without walls	Walls with opening	Walls without opening	Ground perimeter	Ceiling perimeter	Surface of windows	Surface of doors
Bathroom 5' 8" x 6' 3" Ceiling height: 8'	284 ft ³	35.42 sq ft	190.79 sq ft	173.01 sq ft	21' 2"	23' 10"	0.00 sq ft	17.78 sq ft
Bedroom 13' 5" x 11' 6" Ceiling height: 8' 1"	1111 ft ³	137.41 sq ft	401.64 sq ft	354.35 sq ft	44' 6"	49' 8"	12.85 sq ft	34.44 sq ft
Closet 3' 5" x 2' Ceiling height: 8'	55 ft ³	6.83 sq ft	86.72 sq ft	70.06 sq ft	8' 4"	10' 10"	0.00 sq ft	16.67 sq ft
Dining Room 9' 8" x 13' 4" Ceiling height: 7' 10"	1010 ft ³	128.90 sq ft	360.35 sq ft	296.91 sq ft	26' 9"	46'	24.17 sq ft	39.27 sq ft
Foyer 11' 5" x 13' Ceiling height: 7' 11"	956 ft ³	120.74 sq ft	385.59 sq ft	297.53 sq ft	39' 1"	48' 8"	24.17 sq ft	63.89 sq ft

THIS FLOORPLAN IS PROVIDED WITHOUT WARRANTY OF ANY KIND. CarolinaMeasurePro.com DISCLAIMS ANY WARRANTY INCLUDING, WITHOUT LIMITATION, SATISFACTORY QUALITY OR ACCURACY OF DIMENSIONS.

Project 994

140 Goshen 1

1st Floor

	Volume	Ground surface without walls	Walls with opening	Walls without opening	Ground perimeter	Ceiling perimeter	Surface of windows	Surface of doors
Closet 5' 9" x 4' 1" Ceiling height: 7' 11"	186 ft ³	23.48 sq ft	155.69 sq ft	137.92 sq ft	17'	19' 8"	0.00 sq ft	17.78 sq ft
Kitchen 15' 4" x 13' 4" Ceiling height: 7' 10"	1349 ft ³	172.21 sq ft	449.30 sq ft	390.91 sq ft	36'	57' 4"	5.50 sq ft	52.89 sq ft
Laundry Room 5' 2" x 13' Ceiling height: 8' 1"	543 ft ³	67.17 sq ft	293.70 sq ft	275.92 sq ft	33' 8"	36' 4"	0.00 sq ft	17.78 sq ft
Living Room 25' x 13' 8" Ceiling height: 7' 11"	2513 ft ³	317.45 sq ft	611.74 sq ft	452.31 sq ft	53' 9"	77' 3"	21.58 sq ft	137.85 sq ft
Mud Room 4' 6" x 5' 2" Ceiling height: 8'	187 ft ³	23.32 sq ft	154.98 sq ft	91.28 sq ft	9' 9"	19' 4"	0.00 sq ft	63.70 sq ft
Closet 2' 7" x 5' 2" Ceiling height: 8'	106 ft ³	13.22 sq ft	123.68 sq ft	110.35 sq ft	13' 5"	15' 5"	0.00 sq ft	13.33 sq ft
Pantry 3' 10" x 5' 2" Ceiling height: 8'	159 ft ³	19.81 sq ft	144.10 sq ft	130.76 sq ft	16'	18'	0.00 sq ft	13.33 sq ft
Stairway 2' 11" x 7' Ceiling height: 8'	162 ft ³	20.19 sq ft	158.17 sq ft	158.17 sq ft	16' 10"	19' 9"	0.00 sq ft	0.00 sq ft
Study 7' 8" x 13' Ceiling height: 7' 11"	789 ft ³	99.69 sq ft	327.27 sq ft	268.75 sq ft	36'	41' 4"	22.96 sq ft	35.56 sq ft

THIS FLOORPLAN IS PROVIDED WITHOUT WARRANTY OF ANY KIND. CarolinaMeasurePro.com DISCLAIMS ANY WARRANTY INCLUDING, WITHOUT LIMITATION, SATISFACTORY QUALITY OR ACCURACY OF DIMENSIONS.

Project 994

140 Goshen 1

Annotations

Annotation 1

Appliances

Dishwasher 1

Electric Stove 1

Two-door Refrigerator 1

Doors

Folding Door 3

Hinged Door 7

Opening 6

Patio Door 2

Electrical (US)

220V Outlet 1

Paddle Fan with Light 3

Ceiling Light 3

Duplex Outlet 29

Electrical Panel 3

Fluorescent Light 1

Fluorescent Light 1

Fourplex Outlet 1

Ground Fault Duplex Outlet 3

Special-purpose Outlet 1

Switch 17

Telephone Cable 1

Thermostat 1

TV Cable 1

Wall Sconce 1

Furniture

Bookcase 1

THIS FLOORPLAN IS PROVIDED WITHOUT WARRANTY OF ANY KIND. CarolinaMeasurePro.com DISCLAIMS ANY WARRANTY INCLUDING, WITHOUT LIMITATION, SATISFACTORY QUALITY OR ACCURACY OF DIMENSIONS.

Project 994

140 Goshen 1

HVAC

Ceiling Air Vent	1
Freestanding Fireplace	1

Kitchen Cabinets (24")

Base Cabinet 12"	1
Base Cabinet 24"	1
Base Cabinet 36"	2
Base Cabinet (Resizable)	3
Carousel Base Cabinet 36"	1
Double Cab. (Resizable)	6
Right Corner Wall Cab. 24"	1
Single Cab. (Resizable)	2

Outdoors

Brick Path	1
------------	---

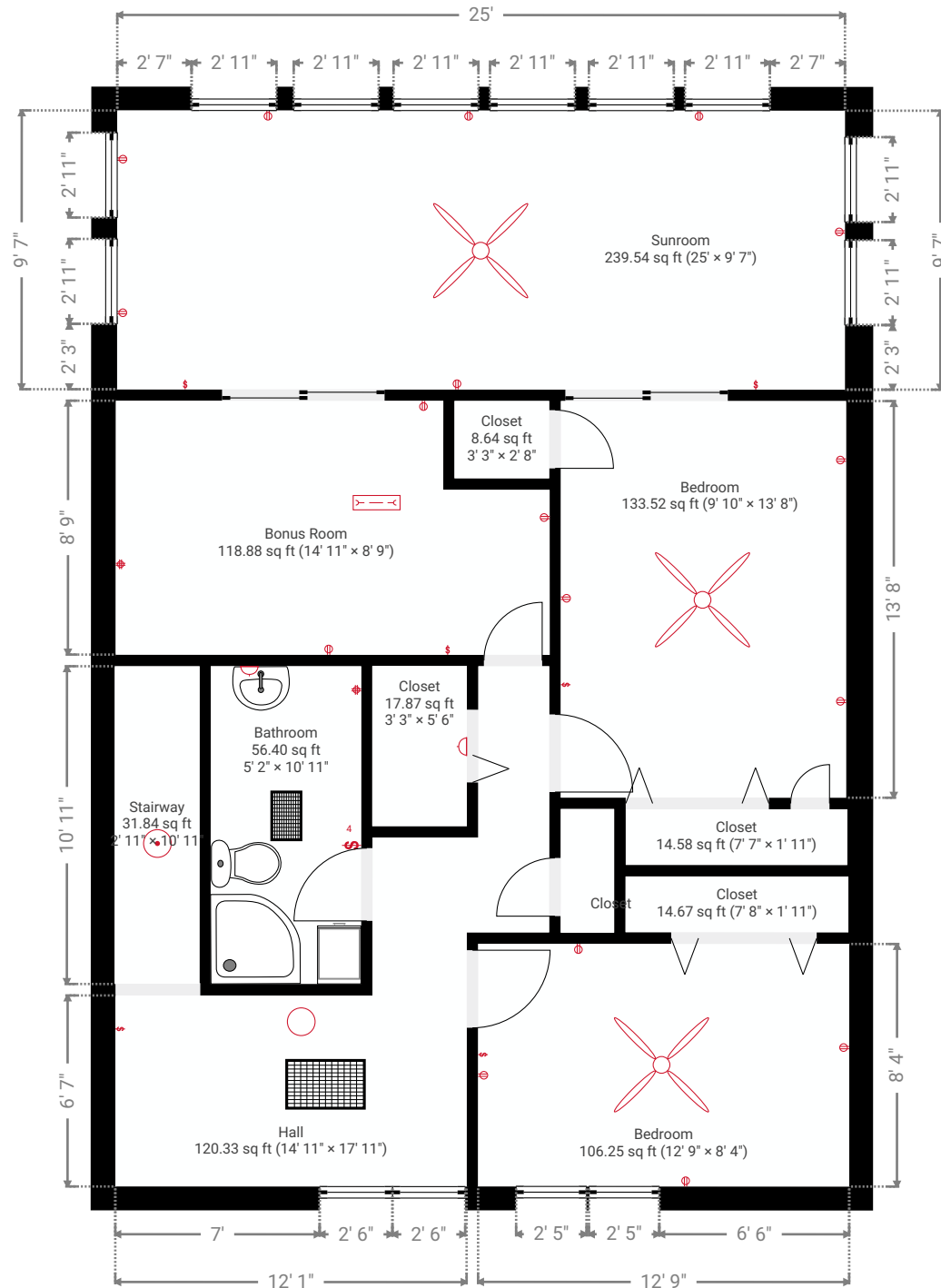
Plumbing

Washer Tap	1
Pedestal Sink	1
Quadrant Shower	1
Toilet	1
Electrical Water Heater	1
Wall Gas Water Heater	1

Windows

Fixed Window	12
--------------	----

▼ 2nd Floor



Project 995

CREATED ON
2022-10-04

LOCATION
140 Goshen 2

Total area 1032.68 sq ft	Floors 1	Rooms 2	Bathroom 1
------------------------------------	--------------------	-------------------	----------------------

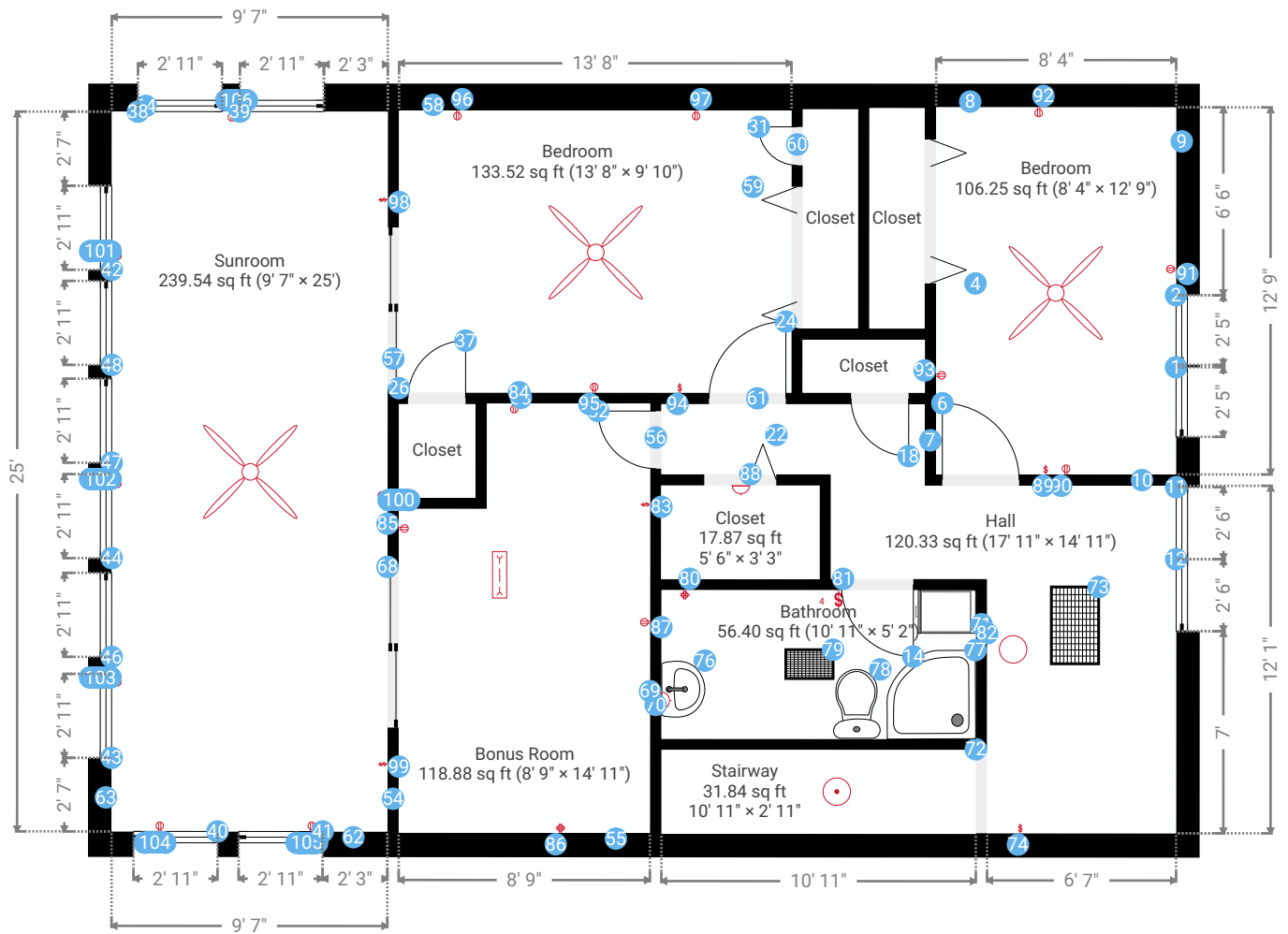
Project 995

140 Goshen 2

TOTAL AREA: 1032.68 sq ft • LIVING AREA: 1032.68 sq ft • FLOORS: 1 • ROOMS: 2

▼ 2nd Floor

TOTAL AREA: 1032.68 sq ft • LIVING AREA: 1032.68 sq ft • ROOMS: 2



This floor plan is provided without warranty as to absolute accuracy. Not to be used for construction purposes.

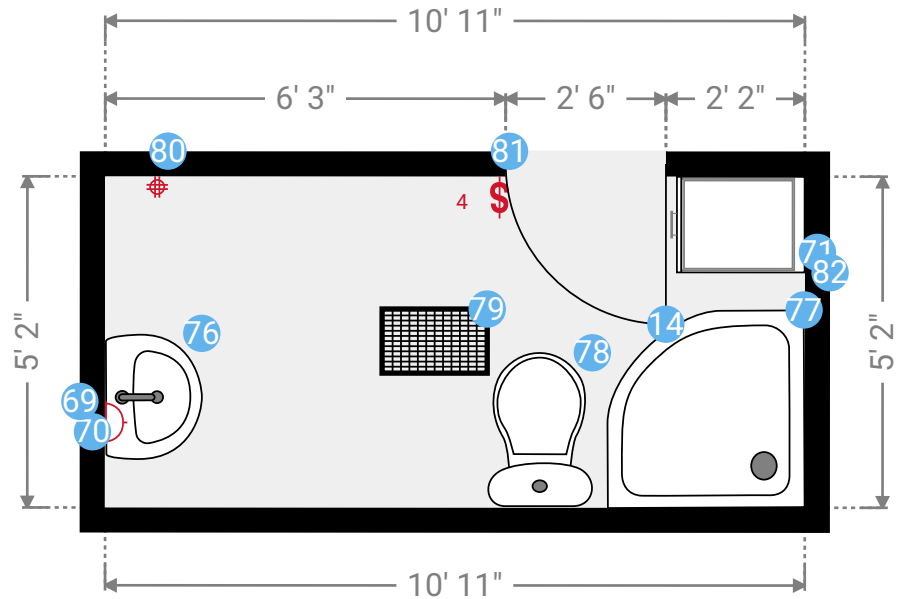
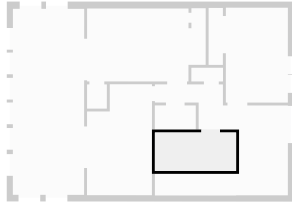


Project 995

140 Goshen 2
 TOTAL AREA: 1032.68 sq ft • LIVING AREA: 1032.68 sq ft • FLOORS: 1 • ROOMS: 2

▼ Bathroom 2nd Floor

WIDTH: 10' 11" • LENGTH: 5' 2" • CEILING HEIGHT: 8' 1"
 AREA: 56.40 sq ft • PERIMETER: 32' 2"



▼ Bathroom/2nd Floor

14 HINGED DOOR

Dimensions
 2' 6" x 6' 9" (Width x Height)



69 WALL SCONCE

Dimensions
 8" x 8" (Width x Height)

Distance to Floor
 6' 8"



70 WALL

Length
 5' 2"

Photo
 1 Photo (see photos page)



71 WALL

Length
 5' 2"



This floor plan is provided without warranty as to absolute accuracy. Not to be used for construction purposes.



1:36

Project 995

140 Goshen 2

TOTAL AREA: 1032.68 sq ft • LIVING AREA: 1032.68 sq ft • FLOORS: 1 • ROOMS: 2

▼ Bathroom/2nd Floor

71 WALL

Photo

1 Photo (see photos page)



76 PEDESTAL SINK

Dimensions

2' x 1' 6" x 3' 2" (Width x Depth x Height)



77 QUADRANT SHOWER

Dimensions

3' 1" x 3' 1" x 6' 11" (Width x Depth x Height)



78 TOILET

Dimensions

1' 8" x 2' 5" x 3' (Width x Depth x Height)



79 CEILING AIR VENT

Dimensions

1' x 1' 8" x 1" (Width x Depth x Height)



80 FOURPLEX OUTLET

Dimensions

4" x 4" (Width x Height)

Distance to Floor

3' 3"



81 SWITCH

Dimensions

8" x 4" (Width x Height)

Distance to Floor

3' 1"



82 TALL CABINET 26"

Dimensions

1' 6" x 6' 7" (Width x Height)



Project 995

140 Goshen 2

TOTAL AREA: 1032.68 sq ft • LIVING AREA: 1032.68 sq ft • FLOORS: 1 • ROOMS: 2

▼ Photos/Bathroom



This floor plan is provided without warranty as to absolute accuracy. Not to be used for construction purposes.

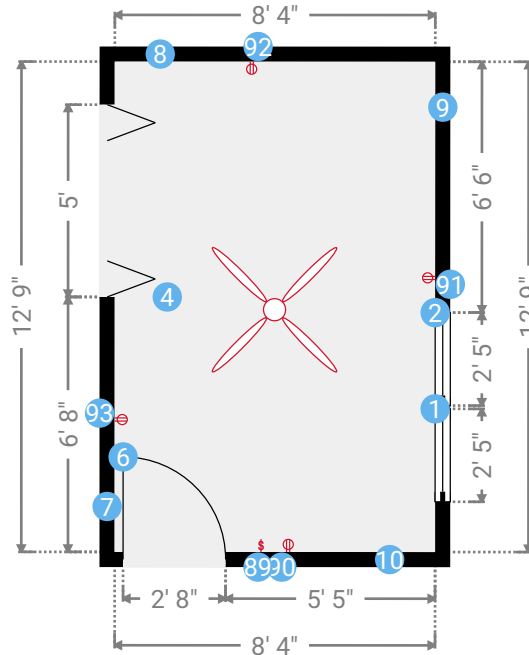
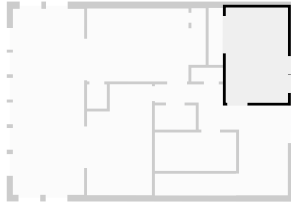
Project 995

140 Goshen 2

TOTAL AREA: 1032.68 sq ft • LIVING AREA: 1032.68 sq ft • FLOORS: 1 • ROOMS: 2

▼ Bedroom 2nd Floor

WIDTH: 8' 4" • LENGTH: 12' 9"
AREA: 106.25 sq ft • PERIMETER: 42' 2"



▼ Bedroom/2nd Floor

1 FIXED WINDOW

Dimensions

2' 5" x 4' 10" (Width x Height)

Distance to Floor

1' 10"



2 FIXED WINDOW

Dimensions

2' 5" x 4' 10" (Width x Height)

Distance to Floor

1' 10"



4 DOUBLE FOLDING DOOR

Dimensions

5' x 6' 6" (Width x Height)



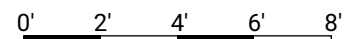
6 HINGED DOOR

Dimensions

2' 8" x 6' 8" (Width x Height)



This floor plan is provided without warranty as to absolute accuracy. Not to be used for construction purposes.



1:60

Project 995

140 Goshen 2

TOTAL AREA: 1032.68 sq ft • LIVING AREA: 1032.68 sq ft • FLOORS: 1 • ROOMS: 2

▼ Bedroom/2nd Floor

7 WALL

Length

12' 9"

Photo

1 Photo (see photos page)



8 WALL

Length

8' 4"

Photo

1 Photo (see photos page)



9 WALL

Length

12' 9"

Photo

1 Photo (see photos page)



10 WALL

Length

8' 4"

Photo

1 Photo (see photos page)



89 SWITCH

Dimensions

4" x 4" (Width x Height)

Distance to Floor

3' 4"



90 DUPLEX OUTLET

Dimensions

4" x 4" (Width x Height)

Distance to Floor

8"



91 DUPLEX OUTLET

Dimensions

4" x 4" (Width x Height)

Distance to Floor

8"



This floor plan is provided without warranty as to absolute accuracy. Not to be used for construction purposes.

Project 995

140 Goshen 2

TOTAL AREA: 1032.68 sq ft • LIVING AREA: 1032.68 sq ft • FLOORS: 1 • ROOMS: 2

▼ Bedroom/2nd Floor

92 DUPLEX OUTLET

Dimensions

4" x 4" (Width x Height)

Distance to Floor

8"



93 DUPLEX OUTLET

Dimensions

4" x 4" (Width x Height)

Distance to Floor

3' 3"

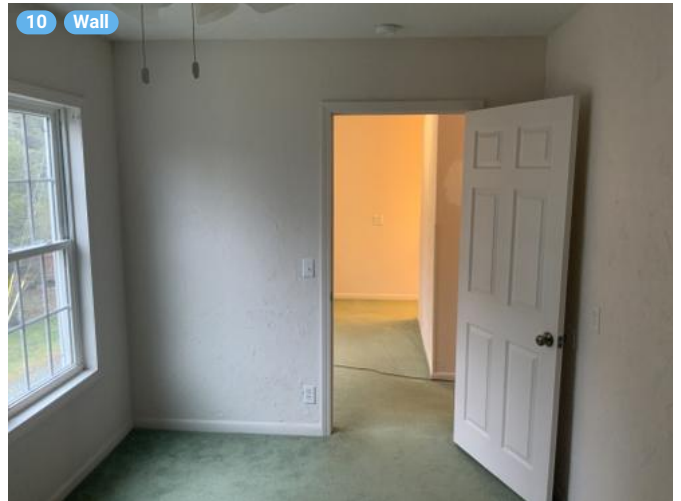


Project 995

140 Goshen 2

TOTAL AREA: 1032.68 sq ft • LIVING AREA: 1032.68 sq ft • FLOORS: 1 • ROOMS: 2

▼ Photos/Bedroom



This floor plan is provided without warranty as to absolute accuracy. Not to be used for construction purposes.

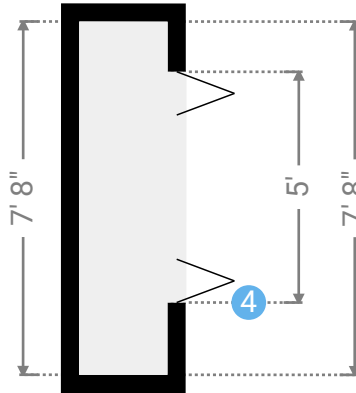
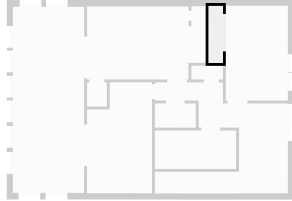
Project 995

140 Goshen 2

TOTAL AREA: 1032.68 sq ft • LIVING AREA: 1032.68 sq ft • FLOORS: 1 • ROOMS: 2

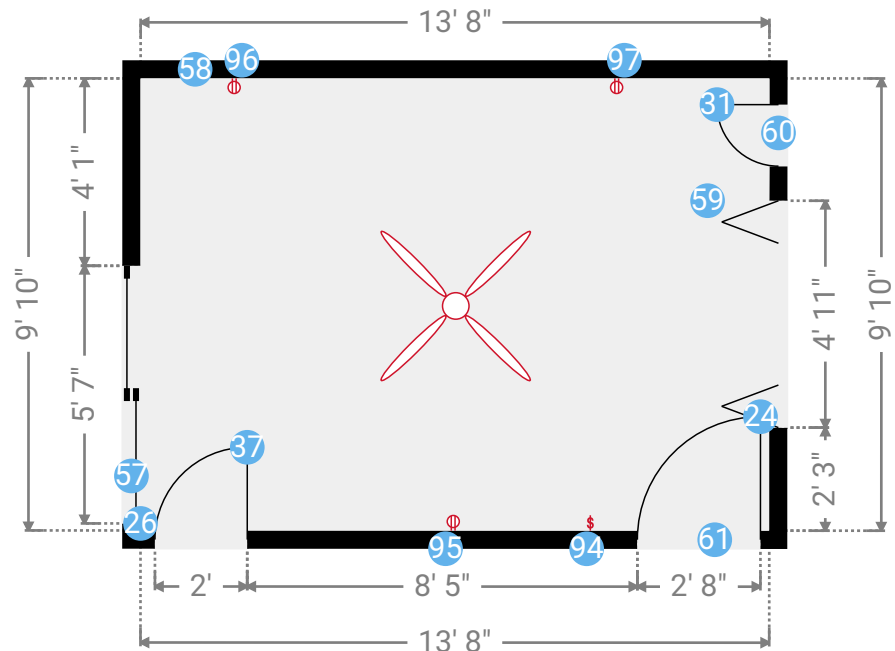
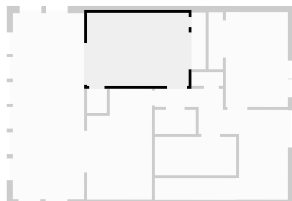
▼ Closet 2nd Floor

WIDTH: 1' 11" • LENGTH: 7' 8"
AREA: 14.67 sq ft • PERIMETER: 19' 2"



▼ Bedroom 2nd Floor

WIDTH: 13' 8" • LENGTH: 9' 10"
AREA: 133.52 sq ft • PERIMETER: 46' 10"



This floor plan is provided without warranty as to absolute accuracy. Not to be used for construction purposes.



1:50

Project 995

140 Goshen 2

TOTAL AREA: 1032.68 sq ft • LIVING AREA: 1032.68 sq ft • FLOORS: 1 • ROOMS: 2

▼ Bedroom/2nd Floor

24 HINGED DOOR

Dimensions

2' 8" x 6' 8" (Width x Height)



26 PATIO DOOR

Dimensions

5' 7" x 6' 6" (Width x Height)



31 FOLDING DOOR

Dimensions

1' 4" x 6' 7" (Width x Height)



37 HINGED DOOR

Dimensions

2' x 6' 8" (Width x Height)



57 WALL

Length

9' 10"

Photo

1 Photo (see photos page)



58 WALL

Length

13' 8"

Photo

1 Photo (see photos page)



60 WALL

Length

9' 10"

Photo

1 Photo (see photos page)



61 WALL

Length

13' 8"

Photo

1 Photo (see photos page)



94 SWITCH

Dimensions

4" x 4" (Width x Height)



This floor plan is provided without warranty as to absolute accuracy. Not to be used for construction purposes.

Project 995

140 Goshen 2

TOTAL AREA: 1032.68 sq ft • LIVING AREA: 1032.68 sq ft • FLOORS: 1 • ROOMS: 2

▼ Bedroom/2nd Floor

94 SWITCH

Distance to Floor

3' 4"

\$ 1

95 DUPLEX OUTLET

Dimensions

4" x 4" (Width x Height)

Distance to Floor

10"



96 DUPLEX OUTLET

Dimensions

4" x 4" (Width x Height)

Distance to Floor

10"



97 DUPLEX OUTLET

Dimensions

4" x 4" (Width x Height)

Distance to Floor

10"

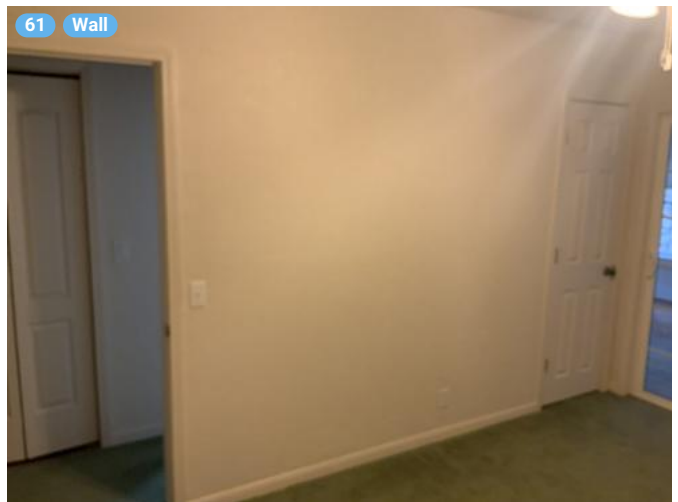


Project 995

140 Goshen 2

TOTAL AREA: 1032.68 sq ft • LIVING AREA: 1032.68 sq ft • FLOORS: 1 • ROOMS: 2

▼ Photos/Bedroom



This floor plan is provided without warranty as to absolute accuracy. Not to be used for construction purposes.

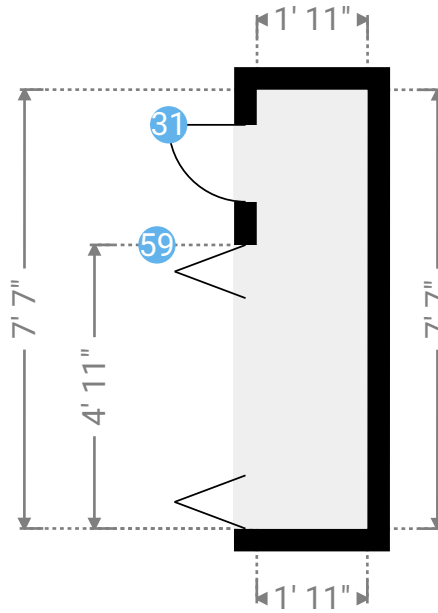
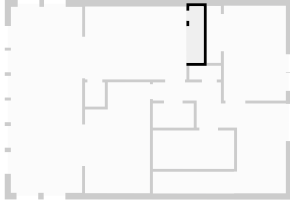
Project 995

140 Goshen 2

TOTAL AREA: 1032.68 sq ft • LIVING AREA: 1032.68 sq ft • FLOORS: 1 • ROOMS: 2

▼ Closet 2nd Floor

WIDTH: 1' 11" • LENGTH: 7' 7"
AREA: 14.58 sq ft • PERIMETER: 19' 1"



▼ Closet/2nd Floor

59 DOUBLE FOLDING DOOR

Dimensions

4' 11" x 6' 8" (Width x Height)



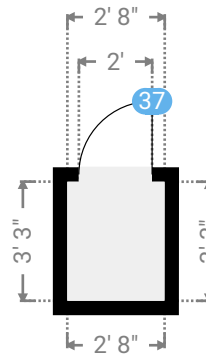
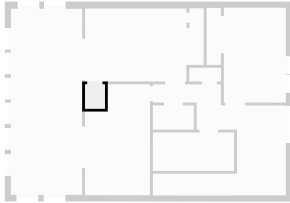
Project 995

140 Goshen 2

TOTAL AREA: 1032.68 sq ft • LIVING AREA: 1032.68 sq ft • FLOORS: 1 • ROOMS: 2

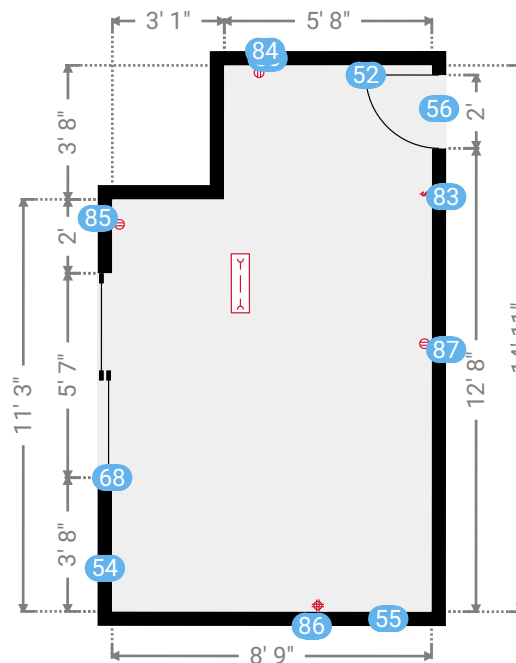
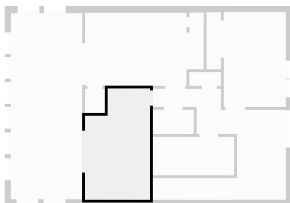
▼ Closet 2nd Floor

WIDTH: 2' 8" • LENGTH: 3' 3"
AREA: 8.64 sq ft • PERIMETER: 11' 10"

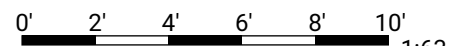


▼ Bonus Room 2nd Floor

WIDTH: 8' 9" • LENGTH: 14' 11"
AREA: 118.88 sq ft • PERIMETER: 47' 3"



This floor plan is provided without warranty as to absolute accuracy. Not to be used for construction purposes.



Project 995

140 Goshen 2

TOTAL AREA: 1032.68 sq ft • LIVING AREA: 1032.68 sq ft • FLOORS: 1 • ROOMS: 2

▼ Bonus Room /2nd Floor

52 HINGED DOOR

Dimensions

2' x 6' 8" (Width x Height)



53 WALL

Length

5' 8"

Photo

1 Photo (see photos page)



54 WALL

Length

11' 3"

Photo

1 Photo (see photos page)



55 WALL

Length

8' 9"

Photo

1 Photo (see photos page)



56 WALL

Length

14' 11"

Photo

1 Photo (see photos page)



83 SWITCH

Dimensions

4" x 4" (Width x Height)

Distance to Floor

3' 2"



84 DUPLEX OUTLET

Dimensions

4" x 5" (Width x Height)

Distance to Floor

8"



This floor plan is provided without warranty as to absolute accuracy. Not to be used for construction purposes.

Project 995

140 Goshen 2

TOTAL AREA: 1032.68 sq ft • LIVING AREA: 1032.68 sq ft • FLOORS: 1 • ROOMS: 2

▼ Bonus Room /2nd Floor

85 DUPLEX OUTLET

Dimensions
4" x 5" (Width x Height)

Distance to Floor
8"



86 FOURPLEX OUTLET

Dimensions
4" x 4" (Width x Height)

Distance to Floor
2' 7"



87 DUPLEX OUTLET

Dimensions
4" x 5" (Width x Height)

Distance to Floor
8"

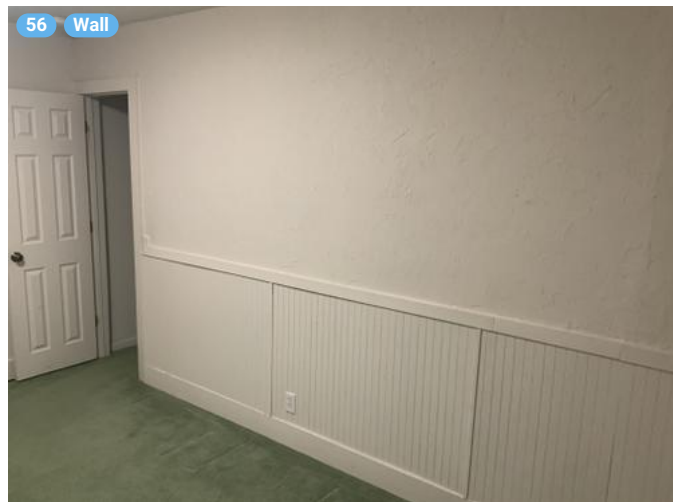
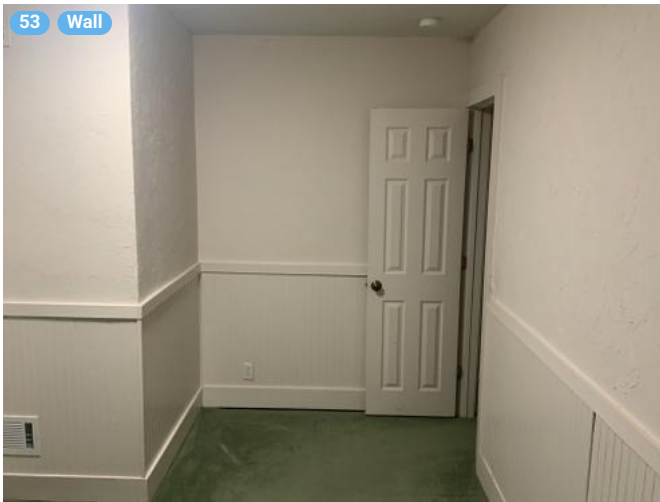


Project 995

140 Goshen 2

TOTAL AREA: 1032.68 sq ft • LIVING AREA: 1032.68 sq ft • FLOORS: 1 • ROOMS: 2

▼ Photos/Bonus Room



This floor plan is provided without warranty as to absolute accuracy. Not to be used for construction purposes.

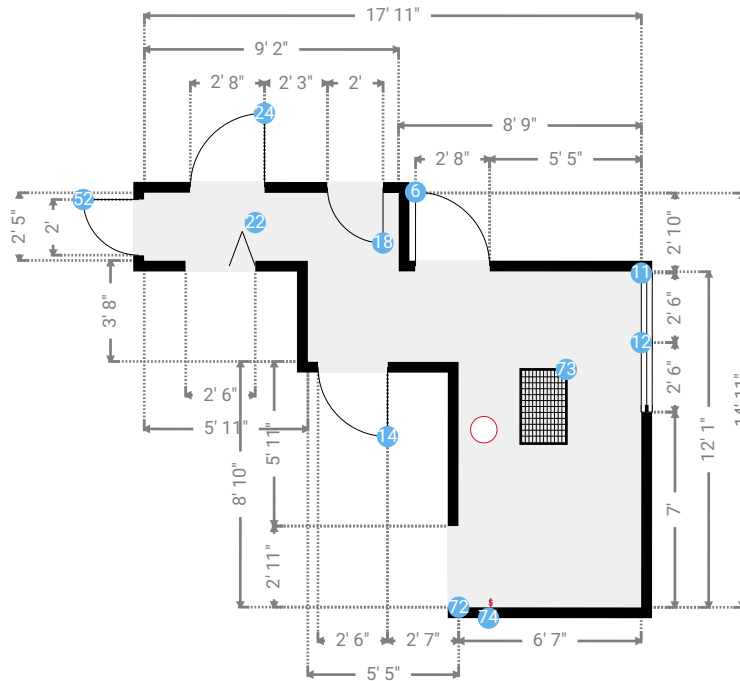
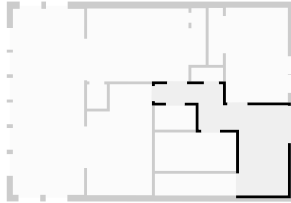
Project 995

140 Goshen 2

TOTAL AREA: 1032.68 sq ft • LIVING AREA: 1032.68 sq ft • FLOORS: 1 • ROOMS: 2

▼ Hall 2nd Floor

WIDTH: 17' 11" • LENGTH: 14' 11"
AREA: 120.33 sq ft • PERIMETER: 65' 7"



▼ Hall/2nd Floor

11 FIXED WINDOW

Dimensions

2' 6" x 4' 9" (Width x Height)

Distance to Floor

1' 10"



12 FIXED WINDOW

Dimensions

2' 6" x 4' 9" (Width x Height)

Distance to Floor

1' 10"



18 HINGED DOOR

Dimensions

2' x 6' 7" (Width x Height)



22 FOLDING DOOR

Dimensions

2' 6" x 6' 9" (Width x Height)



This floor plan is provided without warranty as to absolute accuracy. Not to be used for construction purposes.



1:83

Project 995

140 Goshen 2

TOTAL AREA: 1032.68 sq ft • LIVING AREA: 1032.68 sq ft • FLOORS: 1 • ROOMS: 2

▼ Hall/2nd Floor

73 CEILING AIR VENT

Dimensions

1' 8" x 2' 8" x 1" (Width x Depth x Height)



74 SWITCH

Dimensions

4" x 4" (Width x Height)

Distance to Floor

3' 3"



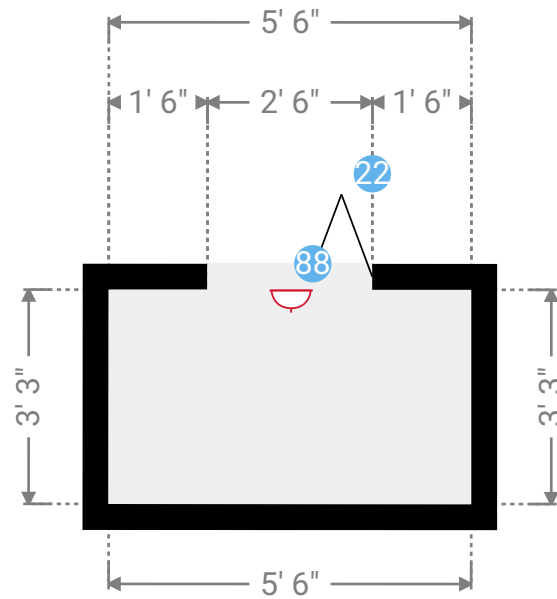
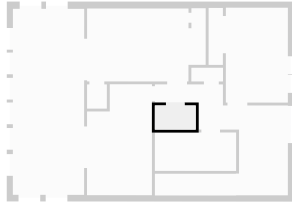
Project 995

140 Goshen 2

TOTAL AREA: 1032.68 sq ft • LIVING AREA: 1032.68 sq ft • FLOORS: 1 • ROOMS: 2

▼ Closet 2nd Floor

WIDTH: 5' 6" • LENGTH: 3' 3"
AREA: 17.87 sq ft • PERIMETER: 17' 6"



▼ Closet/2nd Floor

88 WALL SCONCE

Dimensions

8" x 1' 8" (Width x Height)



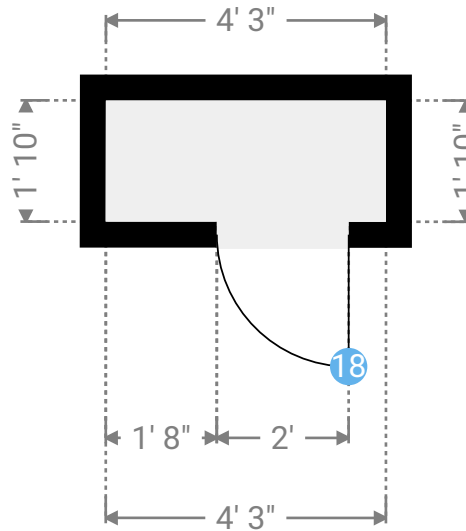
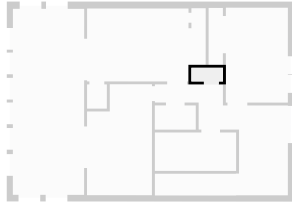
Project 995

140 Goshen 2

TOTAL AREA: 1032.68 sq ft • LIVING AREA: 1032.68 sq ft • FLOORS: 1 • ROOMS: 2

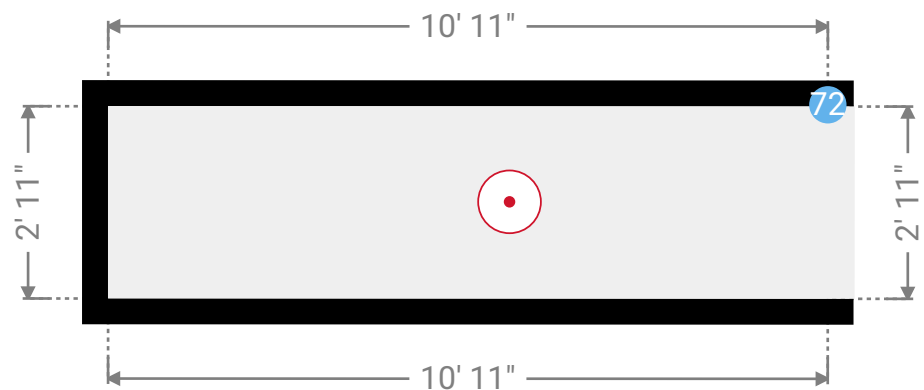
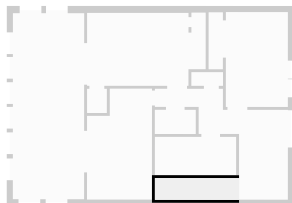
▼ Closet 2nd Floor

WIDTH: 4' 3" • LENGTH: 1' 10"
AREA: 7.82 sq ft • PERIMETER: 12' 2"



▼ Stairway 2nd Floor

WIDTH: 10' 11" • LENGTH: 2' 11"
AREA: 31.84 sq ft • PERIMETER: 27' 8"



Project 995

140 Goshen 2

TOTAL AREA: 1032.68 sq ft • LIVING AREA: 1032.68 sq ft • FLOORS: 1 • ROOMS: 2

▼ Stairway/2nd Floor

72 OPENING

Dimensions

2' 11" x 0 (Width x Height)



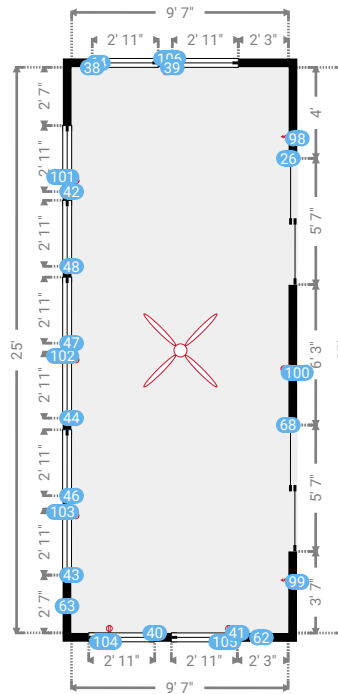
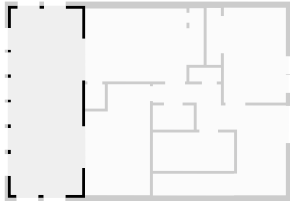
Project 995

140 Goshen 2

TOTAL AREA: 1032.68 sq ft • LIVING AREA: 1032.68 sq ft • FLOORS: 1 • ROOMS: 2

▼ Sunroom 2nd Floor

WIDTH: 9' 7" • LENGTH: 25'
AREA: 239.54 sq ft • PERIMETER: 69' 2"



▼ Sunroom /2nd Floor

38 FIXED WINDOW

Dimensions

2' 11" x 4' 4" (Width x Height)

Distance to Floor

1' 10"



39 FIXED WINDOW

Dimensions

2' 11" x 4' 4" (Width x Height)

Distance to Floor

1' 10"



40 FIXED WINDOW

Dimensions

2' 11" x 4' 4" (Width x Height)

Distance to Floor

1' 10"



This floor plan is provided without warranty as to absolute accuracy. Not to be used for construction purposes.



Project 995

140 Goshen 2

TOTAL AREA: 1032.68 sq ft • LIVING AREA: 1032.68 sq ft • FLOORS: 1 • ROOMS: 2

▼ Sunroom /2nd Floor

41 FIXED WINDOW

Dimensions

2' 11" x 4' 4" (Width x Height)

Distance to Floor

1' 10"



42 FIXED WINDOW

Dimensions

2' 11" x 4' 4" (Width x Height)

Distance to Floor

1' 10"



43 FIXED WINDOW

Dimensions

2' 11" x 4' 4" (Width x Height)

Distance to Floor

1' 10"



44 FIXED WINDOW

Dimensions

2' 11" x 4' 4" (Width x Height)

Distance to Floor

1' 10"



46 FIXED WINDOW

Dimensions

2' 11" x 4' 4" (Width x Height)

Distance to Floor

1' 10"



47 FIXED WINDOW

Dimensions

2' 11" x 4' 4" (Width x Height)

Distance to Floor

1' 10"



48 FIXED WINDOW

Dimensions

2' 11" x 4' 4" (Width x Height)

Distance to Floor

1' 10"



This floor plan is provided without warranty as to absolute accuracy. Not to be used for construction purposes.

Project 995

140 Goshen 2

TOTAL AREA: 1032.68 sq ft • LIVING AREA: 1032.68 sq ft • FLOORS: 1 • ROOMS: 2

▼ Sunroom /2nd Floor

62 WALL

Length

9' 7"

Photo

1 Photo (see photos page)



63 WALL

Length

25'

Photos

2 Photos (see photos page)



64 WALL

Length

9' 7"

Photo

1 Photo (see photos page)



68 PATIO DOOR

Dimensions

5' 7" x 6' 6" (Width x Height)



98 SWITCH

Dimensions

4" x 4" (Width x Height)

Distance to Floor

3' 8"



99 SWITCH

Dimensions

4" x 4" (Width x Height)

Distance to Floor

3' 8"



100 DUPLEX OUTLET

Dimensions

4" x 4" (Width x Height)

Distance to Floor

1'



This floor plan is provided without warranty as to absolute accuracy. Not to be used for construction purposes.

Project 995

140 Goshen 2

TOTAL AREA: 1032.68 sq ft • LIVING AREA: 1032.68 sq ft • FLOORS: 1 • ROOMS: 2

▼ Sunroom /2nd Floor

101 DUPLEX OUTLET

Dimensions

4" x 4" (Width x Height)

Distance to Floor

1'



102 DUPLEX OUTLET

Dimensions

4" x 4" (Width x Height)

Distance to Floor

1'



103 DUPLEX OUTLET

Dimensions

4" x 4" (Width x Height)

Distance to Floor

1'



104 DUPLEX OUTLET

Dimensions

4" x 4" (Width x Height)

Distance to Floor

1'



105 DUPLEX OUTLET

Dimensions

4" x 4" (Width x Height)

Distance to Floor

1'



106 DUPLEX OUTLET

Dimensions

4" x 4" (Width x Height)

Distance to Floor

1'



Project 995

140 Goshen 2

TOTAL AREA: 1032.68 sq ft • LIVING AREA: 1032.68 sq ft • FLOORS: 1 • ROOMS: 2

▼ Photos/Sunroom



This floor plan is provided without warranty as to absolute accuracy. Not to be used for construction purposes.

Statistics

Summary

Floors	1	Bedrooms	2	Windows	14	Ground surface with all walls	1032.68 sq ft	Exterior perimeter	130' 11"
Rooms	2	Bathroom	1	Doors	13	Ground surface with interior walls	927.97 sq ft	Living area	1032.68 sq ft

2nd Floor

Rooms	2	Bedrooms	2	Windows	14	Ground surface with all walls	1032.68 sq ft	Exterior perimeter	124' 5"
Bathroom	1	Doors	13	Ground surface with interior walls		927.97 sq ft			

	Volume	Ground surface without walls	Walls with opening	Walls without opening	Ground perimeter	Ceiling perimeter	Surface of windows	Surface of doors
Bathroom 10' 11" x 5' 2" Ceiling height: 8' 1"	456 ft ³	56.40 sq ft	260.01 sq ft	243.14 sq ft	29' 8"	32' 2"	0.00 sq ft	16.88 sq ft
Bedroom 8' 4" x 12' 9" Ceiling height: 8'	851 ft ³	106.25 sq ft	337.55 sq ft	263.91 sq ft	34' 6"	42' 2"	23.36 sq ft	50.28 sq ft
Closet 1' 11" x 7' 8" Ceiling height: 8'	117 ft ³	14.67 sq ft	153.25 sq ft	120.75 sq ft	14' 2"	19' 2"	0.00 sq ft	32.50 sq ft
Bedroom 13' 8" x 9' 10" Ceiling height: 8'	1069 ft ³	133.52 sq ft	375.04 sq ft	265.95 sq ft	30' 4"	46' 10"	0.00 sq ft	109.09 sq ft
Closet 1' 11" x 7' 7" Ceiling height: 8'	117 ft ³	14.58 sq ft	152.50 sq ft	110.82 sq ft	12' 10"	19' 1"	0.00 sq ft	41.68 sq ft

Project 995

140 Goshen 2

2nd Floor

	Volume	Ground surface without walls	Walls with opening	Walls without opening	Ground perimeter	Ceiling perimeter	Surface of windows	Surface of doors
Closet 2' 8" x 3' 3" Ceiling height: 8'	69 ft ³	8.64 sq ft	94.61 sq ft	81.27 sq ft	9' 10"	11' 10"	0.00 sq ft	13.33 sq ft
Bonus Room 8' 9" x 14' 11" Ceiling height: 8'	952 ft ³	118.88 sq ft	378.39 sq ft	328.77 sq ft	39' 8"	47' 3"	0.00 sq ft	49.62 sq ft
Hall 17' 11" x 14' 11" Ceiling height: 8'	963 ft ³	120.33 sq ft	524.83 sq ft	405.27 sq ft	48' 4"	65' 7"	23.75 sq ft	95.81 sq ft
Closet 5' 6" x 3' 3" Ceiling height: 8'	143 ft ³	17.87 sq ft	140.09 sq ft	123.21 sq ft	15'	17' 6"	0.00 sq ft	16.88 sq ft
Closet 4' 3" x 1' 10" Ceiling height: 8'	63 ft ³	7.82 sq ft	97.49 sq ft	84.33 sq ft	10' 2"	12' 2"	0.00 sq ft	13.17 sq ft
Stairway 10' 11" x 2' 11" Ceiling height: 8'	255 ft ³	31.84 sq ft	221.48 sq ft	221.48 sq ft	24' 9"	27' 8"	0.00 sq ft	0.00 sq ft
Sunroom 9' 7" x 25' Ceiling height: 8'	1918 ft ³	239.54 sq ft	553.69 sq ft	354.72 sq ft	58'	69' 2"	126.39 sq ft	72.58 sq ft

Project 995

140 Goshen 2

Doors

Double Folding Door	2
Folding Door	1
Hinged Door	7
Opening	1
Patio Door	2

Electrical (US)

Surface Mount. Fixture	1
Suspended Fixture	1
Paddle Fan with Light	3
Duplex Outlet	17
Fluorescent Light	1
Fourplex Outlet	2
Switch	7
Wall Sconce	2

HVAC

Ceiling Air Vent	2
------------------	---

Kitchen Cabinets (24")

Tall Cabinet 26"	1
------------------	---

Plumbing

Pedestal Sink	1
Quadrant Shower	1
Toilet	1

Windows

Fixed Window	14
--------------	----