

## PLATINUM SPONSORS





**CAHS, Inc.**

Custom Air Handling and  
Heat Transfer Package Solutions

[www.customairhandlingsolutions.com](http://www.customairhandlingsolutions.com)

### Challenger Series Semi-Custom AHU



- \*2" & 3" Cabinet Construction
- \*3" Cabinet is rated for 10" SP with 1% Leakage
- \*True No Thru Metal Construction
- \*AHU Feet or Painted Structural Steel Base Options

### Apex Series Custom AHU



- \*2", 3", & 4" Cabinet Construction
- \*3" & 4" Cabinet is rated for 12" SP with .50% Leakage
- \*True No Thru Metal Construction
- \*Painted Structural Steel or Aluminum Base Options

**All Products are Custom Designed and Engineered with 3D Modeling**  
**Woman Owned Company, Proudly Manufactured in North Carolina.**



**CAHS, Inc.**

Custom Air Handling and  
Heat Transfer Package Solutions

[www.customairhandlingsolutions.com](http://www.customairhandlingsolutions.com)

**Engineering Office:**

10137 Division Drive  
Raleigh, NC 27603  
(919) 747-9484

**Manufacturing Plant:**

7141 US 301 North  
Battleboro, NC 27809  
(919) 747-9484

Building the facilities  
you need for those  
who matter most.



[www.gilbaneco.com](http://www.gilbaneco.com)

Come visit us at Booth 101



**Morgan Beam**  
Business Development  
Manager



**Ray Rigsby**  
Project Executive



Gilbane is pleased to  
be a Platinum Sponsor  
of NCHEA's 70<sup>th</sup> Annual  
Conference & Exhibition





# BETTER INDOOR AIR FOR CRITICAL ENVIRONMENTS

Hoffman & Hoffman focuses on compliant environmental control, infection control, and energy conservation. No two projects are alike, and our teams love a challenge. Keeping indoor air quality, occupant comfort, and energy efficiency top of mind, we have four unique companies designed to cover every system need you might have.

## SINCE 1947

We work with customers to design and build smart solutions to keep commercial HVAC projects on budget, on time, and ready for what comes next.

We bring together our industry's top manufacturers along with our experienced sales team with one goal in mind: get it right.



**Contact us**  
**336-292-8777**



[www.hoffman-hoffman.com](http://www.hoffman-hoffman.com)







RESULTS BEYOND  
ARCHITECTURE

# ELEVATING YOUR PERFORMANCE

Partnering with you to deliver  
hopeful, healing and healthy  
environments.



Wilmington Heath Outpatient Surgery Center, Wilmington, NC





**Newcomb & Boyd**  
CONSULTANTS AND ENGINEERS



**Engineering Healing Environments**

Atlanta | Charleston | Raleigh-Durham  
[newcomb-boyd.com](http://newcomb-boyd.com)





**Piedmont** Service Group  
Building Efficiency and Sustainability

A Service Logic Company

## **Healthcare Facilities partner with us to maintain safe, comfortable environments for staff and patients alike.**

Our experienced teams help create ideal environments to allow for quality medical care without environmental distractions. At the same time, optimizing operating costs and lowering capital expenditures.

[www.PiedmontServiceGroup.com](http://www.PiedmontServiceGroup.com)  
[www.CMS-Controls.com](http://www.CMS-Controls.com)



**SPEED | CUSTOMER FIRST | EMPATHY**

**Commercial & Residential  
Restoration Services**

## PROVIDING DISASTER RESTORATION SERVICES IN THE CAROLINA'S FOR OVER 30 YEARS



**FIRE**



**WATER**



**MOLD**



**WIND**

### WATER DAMAGE RESTORATION



#### EMERGENCY WATER DAMAGE RESTORATION

The best equipment & fastest responding team to quickly dry out your commercial or residential property.

### FIRE AND SMOKE DAMAGE



#### FIRE AND SMOKE RESTORATION

Let our experts fix the damage that fire and smoke have done to your building and ensure it's safe to use again.

### MOLD & BIOHAZARD REMEDICATION



#### MOLD TESTING & BIOHAZARD REMEDIATION

Get the air in your office or home clean with RestorePro Reconstruction's mold, mildew and trauma removal services.

### WIND & STORM DAMAGE



#### WIND & STORM DAMAGE RESTORATION

When storms strike, our damage restoration technicians will repair the damage right the first time.

“ TO MAKE A POSITIVE IMPACT IN OUR COMMUNITY AND OUR CUSTOMERS' LIVES WHILE ALSO GLORIFYING GOD BY BEING FAITHFUL STEWARDS OF ALL HE HAS ENTRUSTED TO US. ”

## WHEN LIFE CALLS WE ANSWER

RestorePro Reconstruction has been serving Carolina's with our top-notch water removal & water damage restoration, fire and smoke damage restoration & repairs, and mold remediation services since we opened in 1986. The employees at RestorePro Reconstruction offer only the best disaster restoration services in the Carolinas'. We quickly respond to emergency situations and work quickly and efficiently to fix your flood, fire, or mold problems in commercial buildings, homes, schools, and healthcare centers.

Contact us and make an appointment with RestorePro Reconstruction by calling 866-852-6556. We'll come to your facility, office or home that same day.

### WE PROVIDE FREE PROPERTY EVALUATION

## OUR CORE VALUES

**URGENCY** - We operate in the now

**CUSTOMER FIRST** - Every time

**EMPATHY** - For your family & business

**INTEGRITY** - In all we do

**PERSONAL EXCELLENCE** - Living to your potential

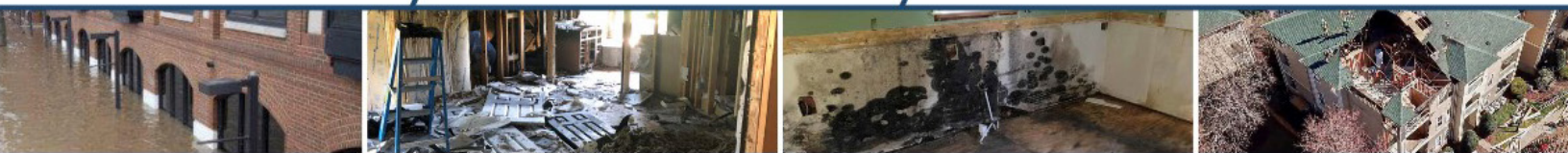


Do you have a  
**RAP** plan?

Serving the Carolina's

**866-852-6556**

TrustRestorePro.com





# we build for healing.

PURPOSE BUILT. PEOPLE DRIVEN.

## MEET OUR HEALTHCARE LEADERSHIP TEAM

Leadership  
**AVERAGES**  
**21**  
**YEARS**  
in Healthcare  
Construction

TEAM  
WORK

**CARE + SAFETY**

**FLEXIBLE**

**Reno + Upfits**  
**Expansions**  
**New Construction**

HOSPITALS  
MOB's + LABS  
SPECIALTY FACILITIES  
CANCER CENTERS  
SURGICAL CENTERS  
OR's + ED's

Experience with  
**OVER**  
**25**  
Healthcare  
Systems

**19** YEARS  
CONSECUTIVE  
AWARD WINNERS  
NC Department  
of Labor  
Gold Safety Award

**STRATEGY**



**LEIGH ANNE CABLE**  
Project Executive  
Charleston



**JOSH WRIGHT**  
Project Executive  
Greensboro



**DAN REYNOLDS**  
Project Executive  
Charlotte



**MARK SANBORN**  
Senior Project Manager  
Savannah



**MATT KENNE**  
Project Executive  
Greensboro

## MY WHY

"These buildings and services will touch the lives of so many, and for some time it will afford them the ability to live out the rest of their lives with their loved ones. I love being a small part of something so large, it's so rewarding."



# Inspection, Maintenance, and Repair of:

AEDs  
Backflows  
Breathing Air Systems  
Clean Agent Systems  
Dampers  
Emergency & Exit Lights  
Engineered Systems  
Fire Alarms  
Fire Barriers  
Fire Doors  
Fire Extinguishers  
Fire Hoses  
Fire Hydrants  
Fire Pumps  
Fire Sprinklers  
Fire Suppression  
Fire Walls  
Jump Bags  
Kitchen Hood Suppression Systems  
Pre-Engineered Systems  
Shower & Eye Washes  
Special Hazards



## Services Offered:

AED/CPR Training  
Alarm Monitoring  
Fire Drills  
Fire Extinguisher Training  
Fire Watch  
First Aid Inspection &  
Replenishment  
Project Management  
Up-fit/Refresh

## Partner and Distributor of:



For more Information please contact (704)824-8880  
[www.SiscoSafety.com](http://www.SiscoSafety.com)



# HELP IS ON THE WAY



Children in our region are in crisis. Children's Hospital of The King's Daughters is lighting the way for improved pediatric mental health with their new behavioral health hospital.

The Children's Pavilion enables CHKD to provide a coordinated continuum of family-focused care through partial hospitalization, intensive outpatient programs and a mental health crisis clinic. The 14-story tower features 60 inpatient beds, behavioral health day treatment, a behavioral outpatient clinic, and outpatient primary and specialty care services.

As the Construction Manager at-risk, W. M. Jordan Company is proud to be part of the project team for this community asset.



W.M.  
*Jordan*  
COMPANY

THE RELENTLESS PURSUIT OF EXCELLENCE • WMJORDAN.COM