

## SPECIAL EVENT SPONSORS



# **BIRS**

## **"THE ROOF SAVERS"®**

### **Commercial Roofing**

**New Roofing, Reroofing, Recovery Roof Systems**

*Some of our services include:*

**Emergency Roof Leak Repairs**

**Detailed Roof Inspection Reports**

**Roof Maintenance Management Plans**

**Reroofing/Roof Repairs**

**Roof Curb Installations**





NOVANT HEALTH  
KERNERSVILLE MEDICAL CENTER  
LDRP & ICU/ED EXPANSION AND CATH LAB ADDITION



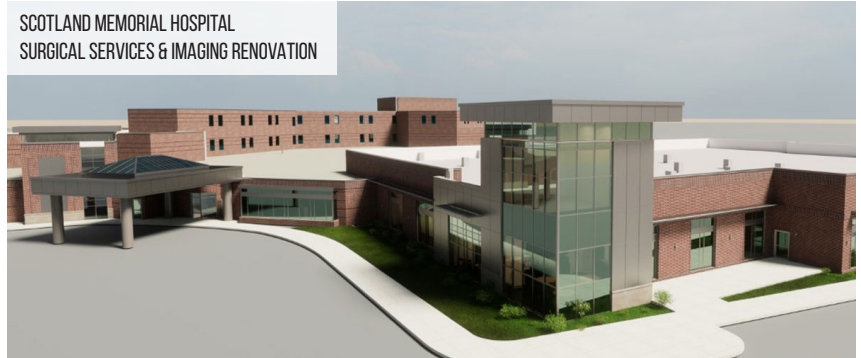
NOVANT HEALTH  
CLEMMONS MEDICAL CENTER



FRANKLIN MEDICAL CENTER  
BEHAVIORAL HEALTH EXPANSION



SCOTLAND MEMORIAL HOSPITAL  
SURGICAL SERVICES & IMAGING RENOVATION



## PARTNERS IN HEALTH

### CONSTRUCTING AN EXPERIENCED HEALTHCARE TEAM

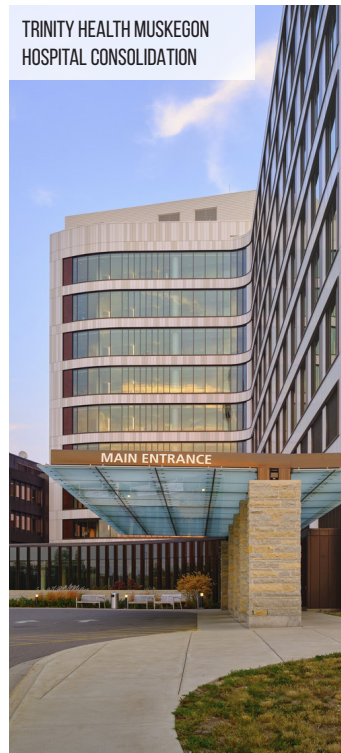
**As healthcare leaders and caregivers,** having a construction partner that understands your business is critical. Industry demands and regulations are changing, resulting in difficult facility decisions. Christman solves problems by guiding our clients through the construction process.

Christman wraps our healthcare partners in layers of valuable services including planning and estimating, BIM, safety and operations; all specifically tailored to your world. We offer a unique brand of healthcare construction expertise, driven by a focus on long-term relationships built on trust, open communication and proven performance. Christman is proud to have constructed \$1.5 billion in healthcare facilities in the past five years.

#### AN EXTENSION OF YOU

In healthcare construction, it is the ability to become an extension of your team—truly “One Team”—that makes a real difference. Christman brings experts, leaders and partners who specialize in healthcare and are guided by the principles of patient first and proactive, timely communication.

TRINITY HEALTH MUSKEGON  
HOSPITAL CONSOLIDATION

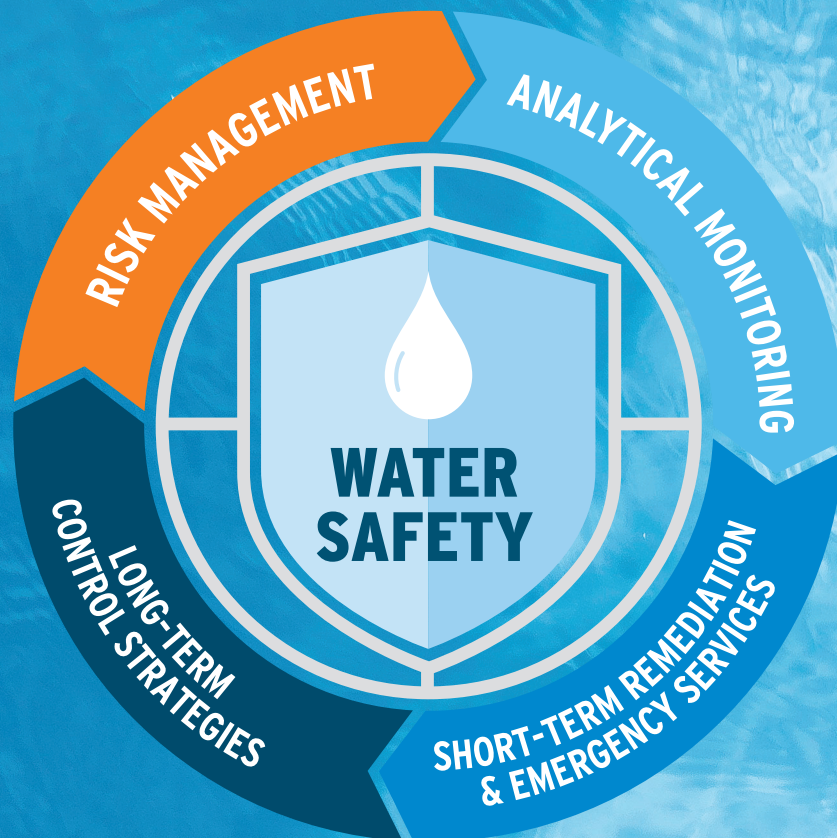


FORSYTH MEDICAL CENTER  
OPERATING ROOM RENOVATION





# Holistic strategies to help manage and reduce your *Legionella* risk.



Contact your local Nalco Water representative today to learn more:  
District Representative Jessi Given | [jessi.given@ecolab.com](mailto:jessi.given@ecolab.com)

**NALCO**  **Water**

An Ecolab Company

[ecolab.com/watersafety](https://ecolab.com/watersafety)

Ecolab, Nalco Water and the logos are Trademarks of Ecolab USA Inc. ©2022 Ecolab USA Inc. All Rights Reserved 06/22





# EcoStruxure Building Advisor The Facility Manager's Toolbox

Building owners, operators, and facility managers face a daunting task — keeping operations running smoothly at maximum capacity, or at low occupancy rates. The challenge is to continuously adapt to new obstacles, changing business priorities, reduced facility staff, and lower operating budgets. With a digitized power and building management system, there are tools to increase remote service capabilities, help control costs, and maintain operations when resources are low.

## Simplify your building maintenance

For real impact on operating costs, occupant comfort and asset value you need to keep building systems performing optimally while working with limited budgetary and maintenance resources.

EcoStruxure Building Advisor is a suite of analytics and monitoring services that provides key insights into your building operations by constantly monitoring systems and identifying faults to proactively address building inefficiencies.

## Typical results\*



29% decrease in unscheduled maintenance



33% fewer occupant complaints



Up to 20% energy cost reduction

\* Typical savings based on Schneider Electric customer portfolio. Results vary based on type of building and configuration.



## GOLD SPONSORS







**BR+A Consulting Engineers**  
**Responsive Buildings. Responsive People.**



DESIGN THAT INSPIRES  
WHAT'S NEXT

Proud supporters of NCHEA  
and its members.

**BSA**

ARCHITECTURE | ENGINEERING | INTERIORS | PLANNING  
[bsalifestructures.com](http://bsalifestructures.com)





# CHARLOTTE ENGINEERS



Certified  
Commissioning  
Firm

## WE ARE HEALTHCARE ENGINEERS

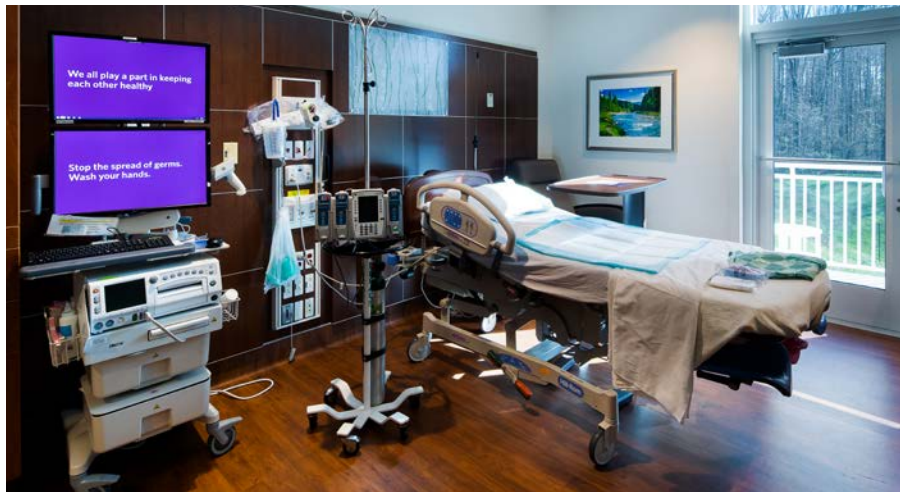
**Mechanical • Electrical • Plumbing • Medical Gas • Fire Protection •  
Construction Administration • Building Commissioning**

Founded in 1996, our design staff includes seasoned professionals with many years of experience, along with younger professionals having outstanding skills in applying modern technology to engineering challenges. We are located in Charlotte, NC and practice engineering throughout the United States.

- Seasoned 25 year old, 100% healthcare firm
- No deadline missed in over 15 years
- Over 4,500 projects completed
- Enhanced Construction Administration & Building Commissioning
- Coordination Drawings
- Lean methodology implementation



[www.CharlotteEngineers.com](http://www.CharlotteEngineers.com)  
[info@CharlotteEngineers.com](mailto:info@CharlotteEngineers.com)



## COMMITTED TO DELIVERING HEALTHCARE EXPERTISE THAT **STRENGTHENS COMMUNITIES** AND POSITIVELY IMPACTS THE QUALITY OF LIFE

Proudly supporting NCHEA for more than 35 years

Alex Harwell, PE, CHFM, CHC  
[aharwell@dewberry.com](mailto:aharwell@dewberry.com)  
919.800.8179



[www.dewberry.com](http://www.dewberry.com)





## **THE ONLY PROPERTY RESTORATION PARTNER YOU'LL EVER NEED**

FIRST ONSITE Property Restoration is the complete solution to protect and restore your healthcare facility in times of crisis. We know that business disruption is a major pain point and work to minimize downtime of critical areas within your facility.

### **INFECTION CONTROL AND PREVENTION**

We safeguard your facility's occupants from airborne contaminants with comprehensive procedures that include critical barrier and anteroom construction, HEPA air scrubbing, and negative pressurization.

### **OCCUPANT SAFETY**

Occupant safety is one of FIRST ONSITE's core values. We work to maintain the safety and well-being of your patients, employees, and visitors by making it our goal to prevent HAIs (Healthcare Acquired Infections) with the use of infection control and prevention methods.

### **CUTTING EDGE TRAINING FOR OUR TEAMS**

We are committed to delivering the best-trained healthcare team in North America. Our employees undergo rigorous training programs that equip them to handle the most intricate issues you face within your facility. This program includes extensive industry training, ICRA, ILSM, and HIPAA compliance. We also take it a step further by requiring our employees to be versed in a multitude of additional areas.

### **OUR EMERGENCY SERVICES ARE ON-CALL 24 HOUR'S A DAY, 365 DAYS A YEAR**



**SCAN THIS CODE  
TO LEARN HOW TO  
PARTNER WITH US NOW**

**800.622.6433  
FIRSTONSITE.COM**





Providing  
**Natural Gas  
& Green Energy**  
solutions for  
businesses.

1.800.472.1051 | [IGSEnergyMarketing.com](http://IGSEnergyMarketing.com)

SPECIALISTS IN

# HEALTHCARE

BUILDING ENGINEERING DESIGN



Asheville SurgeCare Center

 **MCKIM & CREED**  
ENGINEERS SURVEYORS PLANNERS

## Engineering Services

- MECHANICAL
- ELECTRICAL
- PLUMBING
- FIRE PROTECTION
- STRUCTURAL
- COMMISSIONING

## Offices In

Raleigh • Charlotte • Wilmington • Asheville  
Other offices throughout the U.S.

RANKED  
**#10**  
NORTH CAROLINA DESIGN FIRMS  
by Engineering-News Record

RANKED  
**#45**  
TOP MID-ATLANTIC DESIGN FIRMS  
by Engineering-News Record

TOP  
**150**  
DESIGN FIRMS IN THE US  
by Engineering-News Record

TOP  
**150**  
ENVIRONMENTAL FIRMS IN THE US  
by Engineering-News Record

TO LEARN MORE ABOUT HOW MCKIM & CREED CAN HELP YOU  
MEET YOUR INFRASTRUCTURE CHALLENGES, VISIT

[www.mckimcreed.com](http://www.mckimcreed.com)





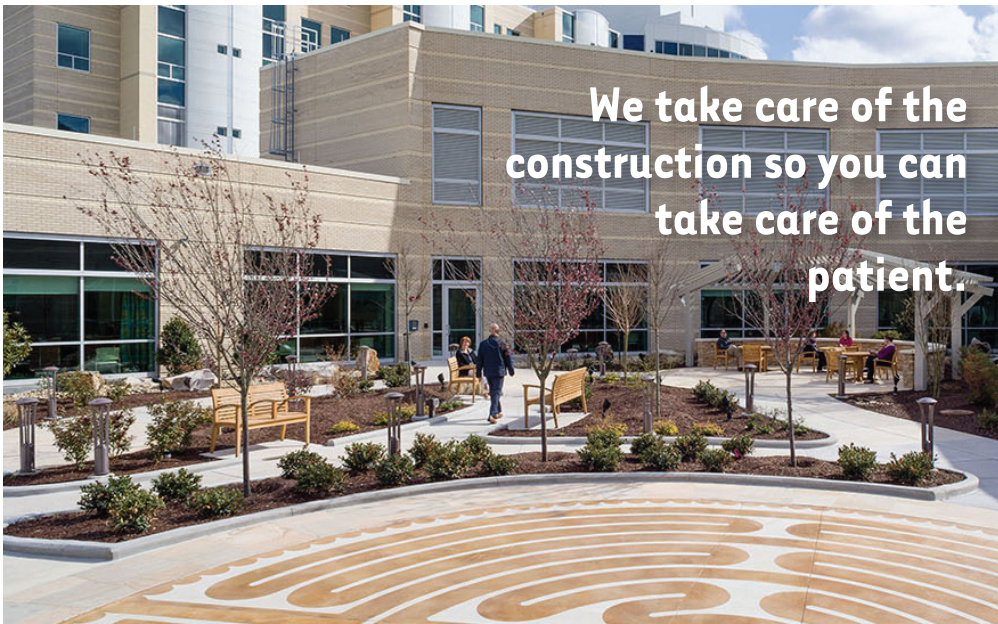
## A PROUD SPONSOR OF THE 2022 NCHEA CONFERENCE



New Duke Health Central Tower



New UNC REX Healthcare Cancer Center



We take care of the  
construction so you can  
take care of the  
patient.

### Construction Management Services for:

- Emergency Departments
- Imaging/Diagnostic Centers
- Laboratory Facilities
- Rehabilitation Centers
- Cancer Centers
- Medical Office Buildings
- Surgery Pavilions
- Patient Bed Towers
- Women's and Children's Centers
- Clinical Services
- Parking Structures
- Data Centers
- Central Energy Plants
- Dietary Services

Rodgers is your trusted partner in providing quality healthcare. We incorporate the latest technology in our construction services to build better facilities, allowing you to focus on providing the best care for your patients, their families, and the community.

[www.rodgersbuilders.com](http://www.rodgersbuilders.com)

**RODGERS**  
Our Passion is Building®

Charlotte | Raleigh | Wilmington | Columbia | Greenville, SC



# SIEMENS

## Ingenuity for life

Daniel Flint, CEM, CEA | Account Executive  
SIEMENS Smart Infrastructure  
215 Southport Drive  
Morrisville, NC 27560, USA  
m: (919) 649-3390  
daniel.flint@siemens.com



ENGINEERING PATIENT CARE™

**INNOVATIVE • CLIENT FOCUSED • RESULTS DRIVEN**

*Specialized Engineering Solutions (SES)* is a national, full-service, healthcare specialty engineering firm dedicated to providing innovative evidence-based design solutions.

### SERVICES

MECHANICAL

ELECTRICAL

PLUMBING

FIRE PROTECTION

COMMISSIONING

LOW VOLTAGE

LIGHTING DESIGN

ENERGY AUDITS



**Verified Service Disabled  
Veteran-Owned Small  
Business (SDVOSB)**

Charlie Hall, PE  
Principal/Charlotte Market Leader  
chall@specializedeng.com

Kathy Babb  
Vice President  
kbabb@specializedeng.com

Stephanie Kegley  
Vice President  
skegley@specializedeng.com



- Facility Master Planning
- Facility Condition Assessments
- MEP Engineering
- Architecture
- Interior Design
- Landscape Architecture
- Civil Engineering
- Structural Engineering
- Land Surveying



PROUD SPONSOR  
OF THE 2022  
NCHEA ANNUAL  
CONFERENCE



## HEALTHCARE ENGINEERED FOR YOUR NEEDS



### Structures

Structural Engineering  
Enclosure Engineering  
Parking  
Secure Design  
Construction Engineering

### Diagnostics

Restoration & Renovation  
Enclosure Diagnostics  
Parking Restoration  
Forensic Analysis

**Chuck Cardwell, PE, LEED AP**

**Jamie Brueggeman, PE**

Charlotte / Raleigh

800.364.7300

[walterpmoore.com](http://walterpmoore.com)





**WHITING-TURNER**

is a proud sponsor of the

# **70th NCHEA Annual Conference & Exhibition**

Construction Management | General Contracting | Design-Build | Integrated Project Delivery

[www.whiting-turner.com](http://www.whiting-turner.com)



***Consulting Engineers***

Mechanical | Electrical | Plumbing  
Structural | Fire Protection | Commissioning  
Sustainability | Building Technology  
HVAC Testing and Balancing  
and Critical Space Testing

**[wsp.com](http://wsp.com)**