

The Villager

Newsletter of the Davidsonville Area Civic Association

Vol. 46, No. 5

P. O. Box 222, Davidsonville, Maryland 21035

January-February 2020

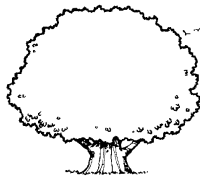
Here and inside!

Read the weighty articles and learn about the weighty issues that stir up the residents of our county, and beyond!

Budget Town Hall, South County
County Council action on Gun Violence and Land Use
Growth and consumption of finite resources
County Council in 2019
Farm food in 2019
Alliance for Livable Communities Plan 2040
Start School Later and School calendar

Then read about the lighter, more enlightening activities of our wonderful best county.

A lyrical paean to the Patuxent
Londontowne Symphony Orchestra
South County Concert Association
DACA's business in and around Davidsonville
and now Green Expo is coming at you!



DACA invites scholarship applicants

The DACA Board of Directors invites individuals to apply for funds to further their post-high school education, academic, technical, or professional, in the coming year. Turn to page 4 to see the criteria.

DACA will sponsor the Eleventh Annual



March 21, 11:00 until 3:00

at Homestead Gardens on Central Avenue

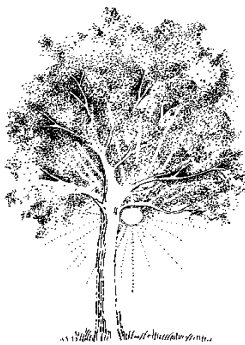
Scout troops 454 and 2018 will perform the flag ceremony at the Grand Opening. Senator Reilly will address the Scouts and visitors. Forty or more exhibitors will present their knowledge for your edification and enjoyment. Come see and learn about good gardening, pollinators, watersheds, energy saving techniques for more sustainable living and more. Environmental experts will conduct four seminars on selected topics. Visit birds, and kids and other baby animals! DACA and the AA County Forestry Board will have 1,000 trees to give to visitors; you can choose from redbuds, northern red oaks, beautyberry, buttonbush, deciduous holly, hazelnut, pawpaw, and serviceberry trees.

Bring unneeded shoes, new or old in any condition, to Soles4Souls to be recondition and distributed to communities in need both in the United States and abroad. Bring your tattered old flags to the Scouts to be respectfully retired.

DACA people

Many thanks to Barbara Holsey and to Red Vaughn for rejoining DACA, and to Kevin and Sharon Carlton and Cynthia Parker for their contributions in addition to renewing their memberships. Very special thanks to George Picot and Jean Rock for their generous gift to the Scholarship Fund in addition to their gift membership to Jeff Rock, as well as continuing their own membership in DACA.

Congratulations to DACA VP Ed Woods on being elected the 17th President of the 92-year-old Glenn Dale Fire Association. Ed had previously served two years as Executive Secretary. DACA member Laura Woods was elected to continue as Vice President.



My husband and I have dogs and alpacas. B.H.

Thank you for such a great job and all your hard work for our community. Great newsletter! C.P.

In memoriam
Donald Covington
January 17, 1940 ~ November 14, 2019
DACA member since 1987

In memoriam
Kathryn P. Sprouse
March 10, 1936 ~ December 2, 2019
DACA member 1976-2011

AA Public Library announces end of overdue fees for kids and teens

In an effort to increase access for younger customers, the library will no longer charge fines for returning overdue children's and teen's materials; and if that's not enough, they have cleared existing overdue fines incurred on children and teen materials from customer accounts.



HOMESTEAD GARDENS
Serving Davidsonville's gardening needs since 1973

Breathe life into your
LIVING SPACE

Davidsonville | Severna Park
743 W. Central Ave. | 522 Ritchie Hwy
HOMESTEADGARDENS.COM

CATLETT'S SERVICE CENTER

537 West Central Avenue • Davidsonville Maryland 21035
410-798-5446 • 410-956-2466

COMPLETE AUTO SERVICE & REPAIR
FOREIGN & DOMESTIC
MARYLAND STATE INSPECTIONS FOR
CARS, TRUCKS, MOTORCYCLES, & TRAILERS

CATLETT'S TOWING

24 HOUR DAMAGE FREE TOWING
ROADSIDE ASSISTANCE
WHEEL LIFT • ROLLBACK SERVICE
MOTORCYCLE TOWING
LOCAL & LONG DISTANCE

537 West Central Avenue
Davidsonville Maryland 21035
410-798-5446 • 410-956-2466

Budget Town Hall

The County Executive will kick off the new year by hosting a Budget Town Hall in each of the county's seven councilmanic districts. County Executive Pittman thinks it is extremely important for you to tell him what YOU want funded in this year's budget. Please note the date and place of District 7's Budget Town Hall, and organize with your neighbors to show up and have your voices heard!

**DISTRICT 7, January 28, 6:00 pm
Southern High School Auditorium**

Gun Violence Prevention

On December 19, the Gun Violence Prevention Task Force presented their preliminary report. The County Executive was pleased to receive the report and will carefully review its recommendations. The preliminary report can be viewed on line and the task force welcomes your feedback. If you have any questions or comments, we encourage you to submit them.

The report includes a series of local proposals to reduce firearm-related deaths and injuries with the latest research establishing gun violence as a significant threat to public health. The GVPTF report includes a broad range of potential steps that might be implemented in the county, including interventions before gun violence occurs, expanded public outreach, shared data collection and enhanced gun safety measures. The task force considered a wide range of best practices used elsewhere and did not limit its proposals to whether or not resources exist currently for implementation.

The state's Office of the Medical Examiner reported 209 deaths in Anne Arundel from guns between the years 2013 to 2017. The majority of those deaths (67 percent) were ruled suicides, 30 percent were homicides, two percent were accidental and one percent were law enforcement involved.

More than half the homicide victims were African American males—56 percent of the countywide total—with the largest number occurring in the most populated communities.

Over the last several decades, an increasing number of public health organizations, academic researchers, and medical groups such as the American Public Health Association, National Medical Association, the American Medical Association, the American College of Physicians and the American Academy of Pediatrics have determined that gun violence is a major threat to public health.

Forest Conservation Bill 68-19 passed by Council

At its November 18 meeting, after three or more public hearings and an abundance of input from citizens' organizations, individuals, and members of the development community, the County Council voted unanimously to pass the Forest Conservation Bill to protect trees and their forests in AA County, increasing fees and requirements to replace trees removed by developers and builders. County Executive Pittman said, "This bill moves Anne Arundel County from the state leader in forest loss to the state leader in forest protection. I'm pleased the Council agreed and passed it unanimously. That's good news for our waterways, our wildlife, and our future generations."

Organizations' and residents' emails, letters and phone calls to Council members really made a difference!

Land Use Planning

On December 4, the County Executive announced a path forward for community driven land-use planning. He talked about the General Development Plan, Regional Area Plans, comprehensive rezoning, and the role that residents will play in each of these. He was joined by the county Planning and Zoning officer, the chair of the Citizens Advisory Committee, and smart growth advocates. County Executive Pittman also announced an update on the county's research into potential development moratoriums in the Route 2 and Route 3 corridors.

Send your comments on the Plan2040 Draft Vision and Themes to plan2040@aacounty.org. Send your comments on the nine proposed Regional Planning Areas to plan2040@aacounty.org.

See pages 6-12 for more details about growth and the General Development Plan.

Gluten-Friendly Menu Available!

Join us for the Happiest of Hours

Mon-Fri 3pm-6:30pm

Davidsonville's ONLY Traditional Irish Pub

Live Music Fri-Sat 8:30pm

Sunday Branch 10am to 2pm

584 West Central Ave, Davidsonville, MD
www.KillarneyHousePub.com 410-798-8700

Scholarship funding is here for the asking

To apply for a scholarship, write to DACA, PO Box 222, Davidsonville, MD 21035, following the criteria listed here.

Purpose and Limitations

1. DACA’s scholarship funds must be used for educational training: academic, technical, or professional.
2. The scholarship is available to individuals for one year at a time.
3. Scholarship awards are made at the discretion of the DACA Board.
4. Awards may be for up to \$500 at the discretion of the DACA Board and may depend on the number of applications.
5. Applicants and grantees may apply annually for an award for a maximum of four consecutive years.

Qualifications

1. The scholarship applicant must be a member of DACA or be a child of a member who lives in the DACA geographic area, as defined by DACA’s Bylaws.
2. The applicant must be involved in a community activity within the DACA geographic area and be able to document that involvement (see Requirements).

Requirements

1. The application is due by May 1 (or the following Monday if May 1 should fall on a weekend). Applications received after the due date will not be considered.
2. The applicant must include all of the following information and documentation in writing at the time of their application. Incomplete applications will not be considered.
 - a. State the intended use of the grant funds.
 - b. Provide a letter of acceptance to the school or program for which they intend to use the grant funds.
 - c. Describe in writing what they have done for their community or how they have participated in community involvement.
 - d. Provide a letter of recommendation from an officer of the community organization in which the applicant has been involved.

Scholarship Angels

Tom and Kris Angelis
 Kevin and Sharon Carlton
 Judy Kienast
 Betty Knupp
 George Picot and Jean Rock
 Teresa Sadeghin




PHI
PHILLIPS HOME IMPROVEMENTS

MHIC# 67877. Fully Insured

- Kitchen & Bath Remodeling
- Finished Basements
- Ceramic Tile
- Roofing
- Painting
- Custom Carpentry
- Minor & Major Home Repairs

Visit our website: www.phi-md.com
410-798-9030

The Capital READERS CHOICE 2-0-1-2 WINNER	The Capital READERS CHOICE 2-0-1-3 WINNER	The Capital READERS CHOICE 2-0-1-4 FINALIST	The Capital READERS CHOICE 2-0-1-5 WINNER	Gaëtte READERS CHOICE 2-0-1-5 WINNER	The Capital READERS CHOICE 2-0-1-6 WINNER	The Capital READERS CHOICE 2-0-1-7 FINALIST
---	---	---	---	--------------------------------------	---	---



PRIMARY CARE AND BEHAVIORAL HEALTH SERVICES FOR ALL AGES



Same Day Appointments Available

Accepting **NEW PATIENTS** and **MOST** insurances
 No insurance? We can Help!
 Spanish translator on staff
Two convenient locations!
 134 Owensville Road, **West River**, MD 20778
 6131 Shady Side Road, **Shady Side**, MD 20764

Medical
Phone: (410) 867-4700

Wayne Bierbaum, MD Nancy Bryant, CRNP
 Jonathan Hennessee, DO Ann Hendon, PA-C
 Thomas Sheesley, DO Rebecca Roth, CRNP

Behavioral Health
Phone: (443) 607-1432
 Jana Raup, Ph.D., LCPC
 Joy Goodie, LCPC
 Barbara Ripani, LCSW-C
 Narlie Bedney, LCPC

Follow us @BayCommunityHC   www.baycommunityhealth.org

Updates on roads and traffic

BGE has completed the preparatory work necessary before actual construction can begin on Governors Bridge Road at Riva Road. On the other hand, Verizon has yet to make a visible start.

Apparently the Prince George’s County officials are in no hurry to see the Governors Bridge: bridge repaired and reopened.

Ed Woods recognized that with the onset of cold weather, construction, and, therefore dump truck traffic has lessened.

Delegate Michael Malone sent the following information about Defense Highway (Rte 40)

MDOT SHA will continue routine maintenance of culverts and will apply anti-icing materials as needed. The shop is performing routine inspections when forecasts indicate that temperatures will be at or below freezing. Special consideration is given when traffic will be higher during peak travel times. We’ve observed that as vehicles drive through water on the roadway, they drag water onto the rest of the roadway that has the potential to freeze. Therefore, crews will salt in these areas. Since there is standing or flowing water at the flooding location, salt would not be effective here. Bridges and roadways near water are more prone to freezing.

Corren Johnson, District Engineer

Recycling paper food wrap

Soiled paper products are not accepted for recycling at the curb. Dirty, stained, or soaked paper just contaminates the clean stuff so it cannot be recycled and all has to go to the landfill.

Clean it up before you recycle: Put soiled paper plates and cups in the trash.

Used tissues, napkins, and paper towels belong in your trash or your compost.

Empty your glass and plastic recyclables.

Tear off and trash the greasy parts of your pizza boxes.

Soiled paper will decompose in the compost bin. Use it! Or you can take it to the Food Scraps Dumpster at the Central Recycling Center, 389 Burns Crossing Road in Severn.

County recyclers also will not take plastic bags, wrap, or film. Take them back to the store where you bought them. Food Lion, Giant, Harris Teeter, Lowe’s, Mom’s, Safeway, Shoppers, ShopRite, Target, Wal-Mart, Wegmans, and Whole Foods will accept plastic bags.

The Forestry Conservation Bill 68-19 was enacted by unanimous vote of the County Council on November 18.

Advertisement for Lance's Locksmith Company, featuring logo, name Lance Edwards President, address Davidsonville MD 21035, phone 410-956-9299, fax 410-956-9039, and email lance@lancelock.com.

Advertisement for Wooddell & Passaro Restorative and Esthetic Dentistry, featuring names James B. Wooddell, D.D.S. and Joseph C. Passaro, D.D.S., address 3102 Davidsonville Road, Davidsonville, MD 21035, phone 410-956-5555, fax 410-798-5165, web www.wpdentalgroup.com, and email patientcare@wpdentalgroup.com.

Advertisement for Acorn Renovations, featuring logo, name Ray Alcorn, slogan "Quality At An Affordable Price", services list (Painting, Bathrooms, Windows, General Remodeling), contact info 410-956-0852, acornreno@gmail.com, 301-805-5774, and MHIC #49798. Includes a note "move to page 7".

Growth Action Network by Ann Fligsten, Chairman

Unrelenting Growth in Anne Arundel County can damage quality of life.

Common assumptions about growth must be questioned.

The paradox of growth is that the better we make our community, the more people will want to come here, until it's no better than any other community. Anne Arundel County has grown and changed dramatically in prior decades. It has long been seen as a desirable place to live, and now it is encountering the growth paradox. We are experiencing traffic congestion, environmental damage, noise, school crowding, and many other issues that have their root cause in growth.

Some types of growth are sustainable and can continue indefinitely—for example, growth in quality, knowledge or social well-being. But growth that consumes resources like land, water, and energy cannot be sustainable in the long term. Eventually, everything is consumed.

Development, population growth, housing growth and related jobs are all based on consumption of resources and will be self-limiting in our County. Besides being unsustainable in the long term, the short-term benefit of residential population growth also can be questioned. Retail and service jobs may increase as population grows, but the number of job seekers will probably also grow. The overall economy may grow from the effect of an increase in workers, but there is little to suggest that median household income would be substantially improved. Planning for growth means planning for accommodation of new residents in the future. However, most county citizens seem to question the benefit of having more future neighbors.

It is important to distinguish between targeted development and indiscriminate residential population growth. Thoughtful redevelopment of defunct shopping centers, provision of housing options for county seniors seeking downsizing, and reduction of both housing and transportation costs for workers through construction of workforce housing at transportation centers are examples of targeted development that voters are more likely to find desirable. Carefully targeted development can be used to adjust the built environment to meet the needs of current residents

without significantly increasing the overall population of the county.

Unrestricted, not carefully targeted residential development can have a very negative impact upon current citizens. Our quality of life depends on things like the natural environment, neighborhood character, open space, and ease of transportation. Without legislative and policy limits, development will probably stop before full resource depletion because, at some point, quality of life will have deteriorated to the point that there is little reason for anyone to move here. Enduring this deterioration, would be a traumatic experience for any current resident of the County As a step toward avoiding this future, citizens and their representatives should use Plan2040 and the following Regional Plans to create policies that can serve as a basis for legislation that that will manage growth.

Other states and counties have developed tools to manage growth that include:

- Discouraging up-zoning of residential properties and encouraging down-zoning;
 - Imposing urban/rural growth boundaries and boundaries on targeted growth areas;
 - Curtailing development in environmentally sensitive areas such as Critical Areas and Greenways;
 - Funding Conservation Easements and Purchase of Development Rights;
 - Requiring Adequate Public Facilities before development begins;
 - Applying a limit on the rate of increase of residential units;
 - Assessing full impact fees and/or excise taxes.
- Future population estimates for the County should not be based on simplistic extrapolation of past growth trends. This approach implicitly suggests that current citizens are powerless to manage growth and that their desires are irrelevant. However, the results of many recent listening sessions, surveys, and town halls (Next page, please)



Donald Shankle
Coldwell Banker Residential Brokerage
 Office 410-224-2200
 Mobile 410-562-1034

LIFETIME MEMBER DISTINGUISHED SALES CLUB
 NEGOTIATING REAL ESTATE SALES SINCE 1981

Discover the difference experience makes!
www.thisisthewayhome.com



County Council accomplishments in 2019

excerpted from the Capital Gazette, by Olivia Sanchez
 January 10, 2020

A little more than a year ago, the Anne Arundel County Council was an all-male, Republican majority council. Since the 2018 election, it is a Democratic majority, made up of five women and two men, led by two women for the first time in nearly two decades. The Capital analyzed the work they did in 2019.

The Council—now made up of one veteran and six freshmen—heard 97 bills and 52 resolutions. They passed 80 of those bills, including a controversial budget that increased income and property taxes, two fair housing bills, and the strongest forest conservation bill in the state.

Debates on development and environmental issues that accompanied the forest conservation bill kept the Council in session into the wee hours of the night on more than one occasion, but Councilwoman Allison Pickard said they grew from it.

Pickard said she hopes to see more collaboration and bipartisanship in 2020, like the work they did on the forest conservation bill.

Amanda Fiedler said that even when members of the Council disagree, their confrontations are respectful and professional. She said she appreciates the dialogue.

Andrew Pruski, the lone veteran on the Council and former chairman, also emphasized the importance of working together.

District 7 Councilwoman Jessica Haire, Edgewater, was the lead sponsor on four bills, including a recent successful effort to allow for the partial deferral of the payment of residential wastewater connection charges and assessments under certain circumstances. Another bill she’s

sponsored, yet to be voted on, would create subsidies for wastewater extension project costs. She was the lead sponsor on two resolutions, one of which calls on the county to establish a tree planting incentive program.



2019 was an incredibly successful year for Fair Farms that brought us all closer to achieving our shared vision.

We helped establish the Maryland Food for Maryland Institutions Study Group to explore the best ways for Maryland institutions to purchase local foods, thus opening up new markets for smaller scale farmers.

We secured funding for the Maryland Farms and Families Program, effectively doubling the purchasing power of food-insecure Marylanders using federal nutrition assistance like WIC and SNAP (formerly referred to as “food stamps”) to buy locally-grown food at farmers’ markets.

We solidified our role as key enforcers of the proper implementation of the Keep Antibiotics Effective Act.

We couldn’t have accomplished any of this without our generous supporters. Every dollar raised goes directly towards our work to build a healthy, sustainable and fair food future for all. Please make your check payable to Waterkeepers Chesapeake, write “Fair Farms” on the memo line, and send it to Waterkeepers Chesapeake, P.O. Box 11075, Takoma Park, MD 20913.

Shelby Kalm, Fair Farms

1/2 Off Vaccines
 (Rabies, Distemper-Parvo, FVRCP) **FOR NEW CLIENTS ONLY**
 Must be combined with a paid exam

Family Veterinary Clinic • 1413 Defense Hwy., Gambrills, MD 21054
www.FamilyVeterinaryClinic.com • 410-721-4545

**BAY BREEZE
 HEATING AND
 COOLING, INC.**

Contracts Available Free estimates
 Service all brands Financing (with approval)
 Indoor Air Quality Lifetime Warranties
 Residential Replacements Rebates Available

www.baybreezehvac.com
 1 888 300 3690

GAN on Growth (from page 6)

all suggest that citizens are becoming aware that growth is indeed the elephant in the room. There appears to be broad citizen support of careful growth management. Plan2040 offers an opportunity to begin.

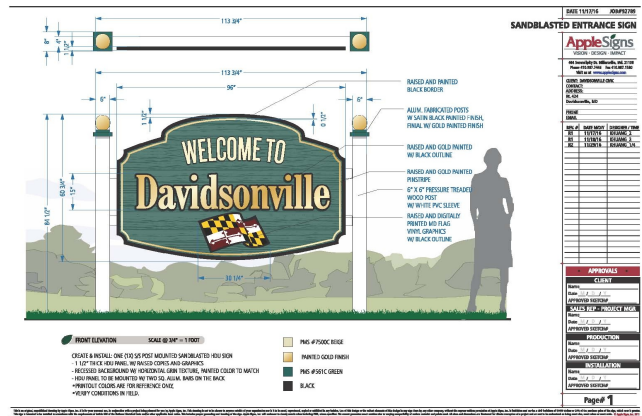
GAN recommends that the coming Plan2040 and Regional Plans include policies on management of growth.
December 27, 2019

At the end of December, I stepped aside as the Executive Director of GAN and joined the GAN Board, now all volunteers. We have had great success in many areas—land use is our focus. How to use land wisely and well for all of us and future generations is the heart of our work. In order to run GAN effectively as an all volunteer organization we will need more help from members in a number of areas.

The GAN Board set seven teams to get the work of GAN done: Legislation, Transportation, Membership, Communication, Fundraising and Grants, Internal Planning; and ad hoc as needed. Board members will serve on these committees, but we need members to volunteer where their interests lie. If you cannot serve, but know someone who would like to, please encourage them to join with us. If you have questions about the committees or want to volunteer for one, please contact me at annfligsten@gmail.com.

Growth Action Network of Anne Arundel County P.O. Box 748, Arnold, MD 21012 www.growthaction.net

Is there another snag on the Permit?



Michelle Vrikkis, in the Transportation Office at the Maryland State Highway Administration said the Transportation Office has approved the location and will instruct the Utilities Office to issue the permit after the Landscape Office reviews the plan. DACA’s volunteers will be working with the Landscape Office for the final installation of the sign. A phone call to the Landscape Office disclosed that we are now down to the final hurdle with the Utilities Office, where someone still could veto our sign. We shall see!

Arundel Federal Savings Bank Mortgage Loan

MAKE YOURSELF AT HOME

Because it's a place to LAY YOUR HEAD

Mention this ad and get \$500 closing credit.*

Visit a branch or apply online at ArundelFederal.com today.

410.768.7800

ARUNDEL FEDERAL SAVINGS BANK

*We reserve the right to withdraw this offer at anytime.

Member FDIC

GAN invites you to become a member to support our work in 2020. To join us, go to GAN's website and join through PayPal, or print a membership form and mail it in. The form is particularly important if you are representing an organization, rather than joining as an individual member. We are very proud to have all of the Riverkeepers as members and many other non-profits and home owners associations. We will be reprinting our brochure in 2020 and want your organization to be on our list!! New organizations are welcome so spread the word. Donations are welcome, too!

NFM LENDING
America's Common Sense Lender

Chris Grizzell
Branch Manager
NMLS #476320
Cell / Direct: 443-889-6888
Office: 443-451-3430
Fax: 443-451-9430
cgrizzell@nfm lending.com
www.nfm lending.com/cgrizzell

Going to the River

by John Page Williams

Ten miles east of the Capital Beltway's outer loop, you will find public lands and launch ramps along the Patuxent River to take you back to the nineteenth century, the early seventeenth century, and even the Archaic period, when Indians hunted, trapped, and fished these woods and waters as rising sea levels formed the Chesapeake's sprawling complex of navigable rivers. This river has educated, inspired, and delighted me for almost five decades as I have shared them throughout the seasons with students, teachers, and friends aboard a Chesapeake Bay Foundation canoe fleet and First Light, my trusty 17-foot Boston Whaler.

Here, the river remains largely rural with broad marshes and old-growth forests preserved from development by Prince George's, Anne Arundel, and Calvert Counties, especially around Jug Bay, just below the Route 4 bridge. The river here is tidal fresh, which may sound like an oxymoron, but every river in the Chesapeake has a section where freshwater flowing from its watershed pushes saltwater downstream past the head of navigation. Depending on watershed size and rainfall, the length of this section can be as short as a quarter-mile or as long as thirty miles. On the Patuxent, the average is about fifteen miles.

This section of Maryland's longest river is ideal for exploring creeks like the Mattaponi by canoe or kayak. I also love to travel a bit faster in my skiff to see how the river evolves from its narrow upper tidal reaches down through Jug Bay to Nottingham, Lower Marlboro, and the marshes opposite Magruder's Ferry. We can thank Prince George's County's Patuxent River Park, Anne Arundel County's Jug Bay Wetlands Sanctuary, and Calvert County's King's Landing Park for providing great access to the river.

From Patuxent Riverkeeper website October 23, 2019

PATUXENT Riverkeeper is a watershed protection group that thrives on principles of citizen engagement and grassroots empowerment. Since 2004, we have approached water quality and environmental problems through the lens of direct citizen engagement in pollution problems, increasing relative justice, and winning maximum participation from classes of people and communities that are often under-represented in environmental policy conversations. We also have served as a unique clearinghouse on the Patuxent for issues, strategies and direct action to protect the Patuxent River ecosystem.



Don Saunders
don@tildenfarm.com
 Office: 410.798.4334
 410.798.4720

1008 W. Central Ave.
 Davidsonville, MD 21035

www.tildenfarm.com
facebook.com/tildenfarm

- Natural Mulches
- Dyed Mulches
- Bag/Bulk Products
- Soils
- Aggregates
- Plants
- Trees
- Shrubs
- Tools



Simply Better.

Essex Bank

2120 Baldwin Avenue, Crofton
 (410) 721-8444

EssexBank.com Member FDIC

Anne Arundel Alliance for Livable Communities by Mike Lofton CEPA Newsletter Fall 2019

CEPA is a founding member of the Anne Arundel Alliance for Livable Communities (ALC). The Alliance, born of ideas generated at CEPA's *Forum on Sustainable Growth* in 2016, is a coalition of local and state organizations advocating for sustainable growth and environmental protections to safeguard and enhance residents' quality of life. The Alliance, comprised of dozens of organizations whose members and supporters include thousands of Anne Arundel County residents, is engaged in the current General Development Plan update process. ALC submitted eight policy recommendations to be included in Plan2040. Concerning management of growth and establishment of development limits, the 2009 GDP shows that the development and redevelopment capacity of lots with RA -R15 residential zoning in 2008 was about 26,000 housing units. This corresponds to about ten percent of the constructed housing units in the County. A current estimate of new development capacity in RA-R22, based solely on lot availability and zoning density, suggests that only about 12,000 new housing units may be developed in these areas. Therefore, in the aggregate, residentially zoned properties in the County are built almost to full capacity. Carrying capacity, which considers natural resource and infrastructure limitations, is less than capacity based on zoning in most communities. Areas where undeveloped residential parcels exist but infrastructure and/or natural resource limits have

been reached should be identified. In these communities, planning efforts should focus on maintaining a stable population and enhancing quality of life for current residents.

Alliance for Livable Communities recommendations:

1. Areas with infrastructure or natural resource limits should not be targeted for new growth. The availability of development opportunities should also be strongly influenced by the desires of community residents. The Plan2040 Small Area Visioning sessions have clearly demonstrated that residents are concerned with current over-development, sprawl development, and loss of open space. Without changes in zoning of RA-R15 lots to increase density, it appears likely that development on these types of properties will be self-limiting in the aggregate, but down-zoning may be needed to meet local objectives.
2. Policies that discourage rezoning and modifications that allow more dense development of RA-R15 parcels should be included in Plan2040. Maintaining current zoning on RA-R15 properties is likely to have the added benefit of directing future development to town centers and mixed-use areas, in accordance with smart growth. It will be necessary, however, to assure that the boundaries of these population centers do *(continued on page 11)*

FOUR LEGS
ANIMAL HOSPITAL

Your **Pet** +
Healthy

dental care
internal medicine
surgery
behavior problems
healthcare
itching allergies
vaccines

www.fourlegs.net
410-798-5222
1329 West Central Ave., Davidsonville, MD 21035

Kent Smith 240-508-3813 INSURED
FREE ESTIMATES MHIC # 43396
410-721-0858

BAY AREA EXTERIOR PRESSURE WASHING

Commercial • Residential
Homes (all surfaces) • Decks • Sidewalks • Patios
Wood Preservative Treatments • Staining

Gregory T. Wheelwright
CABINETMAKER

Fine Woodwork
Architectural Millwork
Special Cabinetry & Furniture
Design with Heart & Spirit
Integrity, Honesty & Value

1080 Mt. Airy Road
DAVIDSONVILLE, MD 21035

EST. 1974
410-798-6263

ALC on PLAN2040, Mike Lofton (*from page 10*) not expand substantially into surrounding residential, open space, or environmentally sensitive parcels.

3. Policies that encourage upward development and redevelopment, rather than outward expansion of population centers, should be included in Plan2040. Currently, new developments are charged impact fees to pay for the costs associated with roads, schools, and public safety required by the new development. These fees now only cover approximately 80 percent of the costs to the County.

4. Impact fees should be raised to cover 100 percent of costs and the fee should be expanded to include costs associated with parks, libraries, and detention facilities.

Concerning Empowerment of Small Area Plans

After the last GDP was completed in 2009, comprehensive rezoning began. Hundreds of proposed rezonings were considered. The entire rezoning process took over a year. Ultimately, three bills were introduced to address the County’s seven legislative districts. Throughout the process, most recommendations were made by persons who did not live near the community affected by the proposed rezoning. Frederick County is pursuing a planning and zoning sequence that is more responsive to local community perspectives. Frederick has developed a new comprehensive plan, “Livable Frederick,” which is a broad policy document. Its adoption will not be followed by comprehensive rezoning. Rather, small area plans will be developed to address land use and zoning at the parcel level in a manner that is consistent with the broad comprehensive plan. This approach allows local communities to fully engage in the planning and rezoning process and yields results that are consistent with the communities’ vision for their future.

5. Rezoning should follow the adoption of Small Area Plans before adoption of Plan2040. This sequence should be specified in Plan2040.

Concerning Improved protection of Green Infrastructure

Scattered development consumes an extensive amount of land and fragments the landscape, converting what was

a once near-continuous stretch of forests and wetlands to small, isolated islands of habitat in a sea of developed land. In recent years, Anne Arundel County has been shown to be the most egregious practitioner of forest clearing among all Maryland counties. The Maryland Department of Natural Resources (DNR) has mapped the most ecologically important lands remaining in the state and identified them as Green Infrastructure. Green Infrastructure (GI) is a network of large blocks of intact forest and wetlands, called “hubs,” linked together by linear features such as forested stream valleys, ridge lines, or other natural areas called “corridors.” An essential characteristic of Green Infrastructure is the interconnection of its features. Much of the Green Infrastructure in Anne Arundel County lies in its western and southern portions, as identified on DNR’s GSI maps. Only about half of the county’s Green Infrastructure lands are protected from development by various kinds of easements or by inclusion in the Critical Area. These ecologically important areas and the flora and fauna living there warrant protection.

6. A zoning overlay for Green Infrastructure areas should be included in Plan2040 to

Limit the disturbed area on each developed lot

Prohibit construction near streams and wetlands; and

Minimize total impervious surface coverage, including access roads.

(Continued on page 12)

PATRICK J. CALLAHAN
 Attorney at Law
 844 West Central Avenue
 Davidsonville, MD 21035
 E-mail: attycallahan@verizon.net
 Telephone 410-798-7771
 Facsimile 410-798-9990

Providing legal services in Anne Arundel County
 for more than 30 years



ABC APPLIANCE
 Your Local Discount Store

IN BUSINESS FOR 43 YEARS!

WE DELIVER, INSTALL, AND REPAIR!

JOIN OUR PRIORITY CLUB TODAY!

It's as easy as A.B.C...

Always everyday low prices

Best personal service

Commitment to quality service

MAYTAG AMANA Whirlpool Scotsman GE ULINE KitchenAid

10% OFF LABOR ON REPAIRS
 (Must be received at time of service. Cannot be used with any other discounts)

6 Mayo Road • 410-956-2020 • www.abcappl.com

ALC on PLAN2040, by Mike Lofton, *(from page 11)*

Concerning increased agricultural preservation funding

Agricultural land in Anne Arundel County continues to be lost to residential development. Our rich history, natural beauty, and agrarian bounty—things that are appreciated by all County residents—are disappearing. The farm population is aging and often a farmer's net worth is in his land. Farming of commodity crops has become less economically attractive, and younger generations are frequently inclined to pursue employment in urban areas. Agricultural Preservation Programs allow a farmer to capture some of the economic value of the land while retaining ownership. The Agricultural Preservation Program budget for Anne Arundel County will be unfunded in 2020, although a funding level of about \$2.2 million per year is projected for following years. In a county with a \$1.5 billion annual budget, this amount is almost insignificant. A county that truly values its agricultural heritage should dedicate a portion of its budget to preservation.

7. Plan2040 should include a policy that a specified percentage of the annual County budget be dedicated to the Agricultural Preservation Program.

Concerning Establishment of a Planning Commission

Most Maryland counties have a planning commission on land use issues that serves as an interface between the citizens of the county and the county government. Members of the planning commission are typically appointed by the County Executive. Anne Arundel County does not have a

planning commission but would benefit from the citizen accessibility and transparency of process that would be provided by one.

Plan2040 should recommend the establishment of a Planning Commission with the responsibility and authority to:

Monitor implementation of the General Development Plan and Small Area Plans;

Consider rezoning requests and make a recommendation to the elected officials;

Approve subdivisions plans and site development plans; and


Review land use legislation and amendments to ordinances concerning development and make a recommendation to the County Council.

Chesapeake Environmental Protection Association Newsletter, Fall 2019. Mike Lofton is also a member of Growth Action Network and DACA.

The Alliance for Livable Communities notes that growth is not uniform throughout AA County. Plan2040 should require that each individual Regional Plan specify regional growth targets, recommend growth management policies, and ensure existence of mechanisms for local citizen input and Implementation of regional growth recommendations will need to be carried out by the county administrative and legislative branches, and recommended techniques for growth management.

PERSONALIZED TRAVEL SERVICES

Vacations



Family, Honeymoons, Cruises & Group Travel

TRAVEL BUG, LLC

410-798-4116

christi@travelbugllc.com www.travelbugllc.com

The Frame Shoppe

Custom Framing
2460 Riva Road
Annapolis, MD 21401

Gary L. Palmer, Jr. Linda Lawrence
410-721-9479 410-573-0434

www.TheFrameShoppelnc.com

Delivery and installation
services available

HOURS:

Monday 10:00-5:00
Tuesday 10:00-7:00
Wednesday 10:00-5:00
Thursday 10:00-7:00
Friday 10:00-5:00
Saturday 10:00-5:00

Start School Later

Lisa VanBuskirk, Chapter Leader of Start School Later Anne Arundel County, sent this column to her readers in January.

Three Groups may influence school start times: On December 19th, the Gun Violence Prevention Task Force issued its Final Preliminary Report, which included a reference to student mental health, risky behaviors, and school start times. The inclusion of high school start times in their preliminary recommendations is tremendous! I also have hopes that the Anne Arundel Mental Health Task Force and the Joint Initiative to Eliminate the Achievement Gap, which include supporters of our cause, will likewise include school start times in their recommendations to be published in Spring 2020.

If all three groups list start times in their recommendations and if the Board of Education can include any necessary funding requests for Fiscal Year 2021's budget in February 2020, then the County Executive and County Council (hopefully) cannot not ignore such a budget request.

January is going to be very busy with many opportunities to testify before the Board of Education and at the County Executive/County Council Town Halls in support of school hours. **For public testimony, the most important date is Wednesday, January 22, at 7 pm.** At this BOE meeting (2644 Riva Road, Annapolis), the Board will receive an overview presentation of the recommendations of the AACPS School Start Time Task Force—79 pages of 27 recommendations on transportation operations, logistics, and new bell scenarios/cost estimates. Start time suggestions are 8:00 for elementary schools, 9:00 for middle and high schools; OR elementary at 7:30; high at 8:15, and middle at 9:00. These suggestions will require no extra funds from the budget.

The full RKG report can be found at [https://www.aacps.org/cms/lib/MD02215556/Centricity/Domain/280/Transportation Services%20Comprehensive%20Evaluation%201-8-20.pdf](https://www.aacps.org/cms/lib/MD02215556/Centricity/Domain/280/Transportation%20Services%20Comprehensive%20Evaluation%201-8-20.pdf)

We need people to attend on January 22 and testify. If you don't want to speak, you can stand in support of those who do. We need the board to hear how early high school start times or late elementary start times need to be improved for health and safety reasons; we need high school graduates to explain how later starting college classes or work than they experienced in Anne Arundel's high schools has made difference in their lives. The Board has been very responsive to the demands of the public when many people attend to show support of a topic. We need to be there in force! This is the best opportunity in years to make real progress on this issue. Or send emails to the Board members.

You can also attend and address the County Executive/County Council Town Hall for District 7, South County on January 28, at 6:30 p.m. in Southern HS Auditorium. Or send emails to the Council members.

Please follow Start School Later on Facebook. Even if you are not on Facebook, you can see the posts and articles on our website via a widget. I also regularly update a list of meetings attended, letters to the editor published, etc, at the bottom of the website, and have informational flyers and a history of start times in the County since the 1960s and videos of student testimony. LVB

School Calendar

The school year will end on or about June 18th, 2021, depending on the number of snow days that occur in the school year. (Starting with January 8 and 9!) This month:
 January 20: Schools are closed for Martin Luther King Jr. Commemoration
 January 27, 6:30 pm: Public Hearing on budget at Board of Education
 January 28 and 29: Two-hour early dismissal, no afternoon Pre-K
 January 30: Schools are closed for all students
 January 31: Beginning of third marking period
 February 12: Two-hour early dismissal; no pm Pre-K
 February 17: All schools and central offices are closed for Presidents' Day
 February 29: Spring Sports season begins.



WE DESIGN, PRINT & PROMOTE...YOU!

2217A Defense Highway
Crofton, MD 21114
410.451.0218
info@mmpcrofton.com
mmpcrofton.com

Receive 50% Off on any new order over \$100.00*

Must Reference Promo Code, Up To \$100 Off. Terms and Conditions Apply. Call Store For Details

We are your Local printing company here to help you with:

-  **Graphic Design**
-  **Printing & Copying**
-  **Promotional Products**
-  **Signs & Banners**
-  **EDDM & Direct Mail**

and so much more!

50% OFF
YOUR NEXT ORDER
PROMO CODE MMPS0





**LSO big event January 25
featuring Miss America 2019**

From left: Elvia Thompson, founder of Annapolis Green, Anna Binneweg, Music Director and Conductor LSO, and Lynne Forsman. Together they are putting together an exciting concert, to recognize and publicize the things we can do to be better stewards of our local environment. The LSO is our mid-Maryland community orchestra and is responding to the needs of our community.



**Contact information for
Government Officials**

State District 33

Senator Edward R. Reilly 410-841-3568 edward.reilly@senate.state.md.us
 Del. Michael E. Malone 410-841-3510 michael.malone@house.state.md.us
 Delegate Heather Bagnall 410-841-3406 heather.bagnall@house.state.md.us
 Delegate Sid Saab 410-841-3551 sid.saab@house.state.md.us
 State's Attorney Anne Colt Leitess 410-222-1740 aacsao@aacounty.org

Anne Arundel County

County Executive Stuart Pittman 410-222-1821 expitt99@aacounty.org
 Council District 7 Jessica Haire 410-222-1401 jessica.haire@aacounty.org
 District 7 Assistant Matt Pipkin 410-222-2417 ccpipk33@aacounty.org

James Kitchin, Community Constituent representative for Council District 7, can be reached at exkitc22@aacounty.org.



**WEST END
Sports Bar & Grill**

Corner of West Street and Route 2
Open 7 Days from 11am - 2am

Late Night Kitchen Mon-Thur until Midnight and Fri-Sun until 1am

MARYLAND The OFFICIAL TERPS
Annapolis Viewing HQ

Please join us, Steve Leonard, Greg & Matt Walling and the staff at WEST END!

**Anne Arundel
Medical Center**

The Auxiliary of Anne Arundel Medical Center, 2001 Medical Parkway, Annapolis, needs volunteers ages 18 and older, daytime and evening hours, weekdays and weekends. Positions include opportunities in patient interaction, customer service, and retail assistance. The auxiliary has been serving the hospital since 1944. Volunteers are an integral part of AAMC's mission of providing patient-centered, high-quality health care services. Please call the auxiliary office 443-481-5050 to volunteer or to request more information.



**LONDONTOWNE
SYMPHONY
ORCHESTRA**

Celebrating Annapolis GREEN!
Promoting a sustainable, environmentally friendly
community with Beethoven’s Symphony No. 6
Nia Franklin “Miss America 2019”
St. John’s College/Key Auditorium
January 25, 2020, 7:30pm

Rising Stars! The Best of Maryland!
Showcasing winners of the LSO’s 7th Annual
Young Artist Competition
St. John’s College/Key Auditorium
March 7, 2020, 7:30 pm

Season Finale!
With students from the
Annapolis Symphony Academy
performing Tchaikovsky’s Symphony No. 4
Archbishop Spalding High School
June 6, 2020, 7:30 pm

Our mailing address is:
Londontowne Symphony Orchestra
PO Box 926, Edgewater, MD 21037
Go to <http://lso-music.org> to purchase tickets, sign up
for our newsletter, and to donate.

SOUTH COUNTY CONCERT ASSN

Our 44th concert season

2019-2020 Season

South County Concert Association

Southern High School, 4400 Solomons Island Road
(Route 2), Harwood, MD 20776

Harbor City Music Chorus Sunday, Feb 9 3:00pm
Cosmic Symphony Sunday, March 22 3:00pm
Broadway Bound--3 Redneck Tenors
Wednesday, April 15 7:30pm

Anne Arundel Community Concert Association

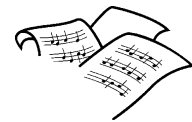
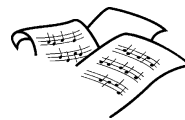
Severna Park High School, 60 Robinson Road,
Severna Park, MD, 21146

Peabody Ragtime Ensemble Winter 2020 date/time tbd
The Maxwell Quartet Friday, April 3, 2020 7:30pm

In December, the subscription cost for the remainder
of the season was reduced from \$60 to \$50. You can
purchase tickets by credit card, by mail, or by bringing
your payment to a concert. To encourage young people to
attend, students age 18 and under will be admitted free.

Please check out our updated website at
www.southcountyconcertassociation.org.

Betty Knupp, Membership Chair, 410-956-4881



**American Sprinter Vans
of Annapolis**



www.AmericanSprinter.com 410-897-4297
195 Defense Highway in Annapolis
A Dealership for Buses too...



is a magazine dedicated to residents of our
fair community that features families and
individuals who make Davidsonville the
place we love. It also features an
occasional piece of local history or a story
of nostalgic interest. If you are a
Davidsonville resident not currently
receiving the magazine and would like to,
please send your email address to
david.grabau@n2pub.com. David Grabau
will send you a free PDF version each
month that you can open and read.



Anne Arundel County Farmers' Market
Riva Road at Truman Parkway
 Market Days
 Sundays 10:00 - 1:00 all year round

Presenting fresh vegetables, salad greens,
 meats, artisan cheese, pasture-raised eggs,
 fresh-cut culinary herbs, milk, yogurt.
 Every Sunday: hot breakfast and baked goods.

Watch us on local television!
Your Farmers Market Today!

Comcast channel 99 and Verizon channel 39
 Fridays at 5:30 pm, Wednesdays at 11:30 am
 For more information, check out the website at
www.aacofarmersmarket.com, or contact
 Deana Tice at email enticementstables@msn.com



DACA OFFICERS

Term to June 2020

- President Bruce Stein 410-956-3759
bsteinesq@yahoo.com
- Vice President H. Edward Woods 410-798-0764
pgchief181@gmail.com
- Secretary Gail Enright 410-533-4766
info@daca-md.org
- Treasurer Brian Stanton 410-798-9318
Brian_stanton63@yahoo.com

DIRECTORS

Term to 2022

- Christopher Asher christopher.asher@ampf.com 410-798-4704
- Sean Healy roundrockinn@aol.com 301-848-6577
- Meredith McQ-Greason mrmcquoid@gmail.com 410-533-9923
- Cynthia Morgan glfriday@yahoo.com 240-393-1311

Term to June 2021

One slot vacant

- Phil Livingstone livingstonep1@verizon.net 443-607-8666
- Lynn Marano billandlynnmarano@verizon.net 410-798-6670
- Melissa Stanton brimeli@yahoo.com 443-858-7470

Term to June 2020

- Jeff Bishop jbgansett1@aol.com 410-808-5597
- Kate Fox fox4smith@verizon.net 410-956-4852
- Wayne Reid wayne.reid@c21nm.com 410-798-9490
- Martin Zehner use the phone 410-798-5083

The Villager

Newsletter of the Davidsonville Area Civic Association
 P. O. Box 222, Davidsonville, Maryland 21035



DACA web site: www.daca-md.org

- Bruce Stein President 410-956-3759
- Gail Enright Editor 410-533-4766
info@daca-md.org and on Facebook

The *Villager* is published at least six times each year. We invite your written and signed contributions of letters, articles, and community notices.

J O I N D A C A

MEMBERSHIP: I wish to be a member of DACA and receive the *VILLAGER*. At \$10.00 per year for each person, my check for \$ _____ is enclosed, payable to DACA for membership for _____ person/s for _____ year(s). Also enclosed is my contribution of \$ _____ to DACA to help with the expenses incurred in the effort to maintain the quality of life that brought us to the Davidsonville area and to help guide the growth and development of our community OR _____ for the scholarship fund

DUES ARE \$10.00 PER PERSON PER YEAR
 Mail to: DACA, P.O. BOX 222, Davidsonville, MD 21035.

Name(s) _____ email _____

Address _____

Telephones _____ Today's date _____

Your comments, your interests?