

 **The Villager**
Newsletter of the Davidsonville Area Civic Association

Vol. 46, No. 6

P. O. Box 222, Davidsonville, Maryland 21035

March-April 2020



**Davidsonville
Green Expo**

DACA will sponsor its Eleventh Annual Green Expo

March 21, 11:00 until 3:00

in the Homestead Gardens Greenhouse on Central Avenue

Free admission. Come, bring the children and get trees for your yard.

See page 3 for details!

DACA people

Many thanks to Peggy and Mike Wormwood for their generous contribution to DACA in addition to continuing their membership. Thanks to five DACA Board Members who contributed to the Scholarship Fund. We invite you to help it grow.

Welcome **Andrew Healy** to the Board of Directors of DACA. He has been attending board meetings as a guest and was invited to serve on the board in the term to June 2021.

Congratulations to board member **Sean Healy** for completing his studies to become a Registered Nurse. He will work in the Washington/Baltimore area.

Bob Bradshaw, the eternal activist

A DACA member since 1987, a former vice president during the 1980s, Bob has continued his activism by joining the boards of numerous nonprofit organizations in the county, including Chesapeake Bay Trust. Most recently he became a member of the board of Providence Center, which supports adults with intellectual and developmental disabilities and provides opportunities for employment and community engagement.

In memoriam
Marian B. Creel
December 14, 1933~February 13, 2020
DACA member since 1993

In memoriam
Jean W. Grimes
July 12, 1929 ~ January 4, 2020
DACA member since 1977

Jean's daughter Suzanne telephoned me when she received the January-February 2020 issue of the Villager to report an error on page 13. I won't tell you what it was, not a misspelled word, but I leave you to find it if you wish to. Suzanne told me her mother had been an English teacher and a real stickler for spelling and grammatical errors. Years ago, when Suzanne wrote her mother a letter, Jean corrected it and mailed it back to her with all errors carefully marked. We both laughed over this, as my daughter always catches my errors!
Gail

HOMESTEAD GARDENS
Serving Davidsonville's gardening needs since 1973

Breathe life into your
LIVING SPACE

HG

Davidsonville | Severna Park
743 W. Central Ave. | 522 Ritchie Hwy
HOMESTEADGARDENS.COM

CATLETT'S SERVICE CENTER

537 West Central Avenue • Davidsonville Maryland 21035
410-798-5446 • 410-956-2466

COMPLETE AUTO SERVICE & REPAIR
FOREIGN & DOMESTIC
MARYLAND STATE INSPECTIONS FOR
CARS, TRUCKS, MOTORCYCLES, & TRAILERS

CATLETT'S TOWING

24 HOUR DAMAGE FREE TOWING
ROADSIDE ASSISTANCE
WHEEL LIFT • ROLLOVER SERVICE
MOTORCYCLE TOWING
LOCAL & LONG DISTANCE

537 West Central Avenue
Davidsonville Maryland 21035
410-798-5446 • 410-956-2466



Davidsonville Green Expo

The 11th Green Expo is presented by the Davidsonville Area Civic Association (DACA), and hosted by Homestead Gardens. Past Chair Gail Enright will be honored as our Honorary Chair.

The Annual Davidsonville Green Expo features exhibitors offering information, education and demonstrations on environmentally-friendly products, sustainable lifestyle, lawn and garden techniques, agricultural practices, energy use, water conservation and preservation, recycling, land use and conservation.

The Expo will provide attendees with all the information they will need to live a sustainable life, protect and preserve our environment, our waterways and our Chesapeake Bay.

In keeping with the theme, DACA has partnered with Annapolis Green to make the Expo a Zero-Waste event, meaning that nothing will go to the landfill. Organics will be composted and bottles and cans will be recycled.

Special Programs

The Green Expo will be officially opened by the **Scouts' Flag Ceremony** inside the Green Expo by the stage. VIP guests including Senator Ed Reilly, will be on stage and Scouts will present the colors. County Executive Steuart Pittman is invited. Following the ceremony, Scouts will proceed outside to raise the flags onto Homestead's flagpole. A bugler will accompany the ceremonies.

Tree seedling giveaway: DACA will hold its Annual tree seedling giveaway along with the Anne Arundel County Forestry Board beginning at 11:00 am at the entrance to the Green Expo in Homestead Gardens' greenhouse.

Souls4Souls: DACA will collect used and unneeded shoes for Soles4Souls, a nonprofit organization that helps provide new and refurbished shoes to communities in need in the United States and abroad. To donate shoes, we ask that you please tie the laces or rubber band each pair together, and bring them in bags to Melissa Stanton at the Souls4 Soles table. Shoes in any condition, new or well-worn, are accepted.

Lectures: Experts will speak on various topics in Homestead's Education room immediately adjacent to the Expo.

11:00: Heather Wheatley, Horticulturist, will present "Sustainable Garden and Lawn Practices."

12:00 pm: Jeff Holland of Arundel Rivers Federation will present "Keeping our Rivers Clean and Clear."

1:00 pm: Dr. Kim LaPierre who leads SERC's Ecosystems Conservation Lab, will talk about her research and ecosystems in the community,

2:00 pm: Ahi Thambinayagam of Coco Gardens will demonstrate and explain the numerous advantages of composting with coco fiber

3:00 pm: Architect Melanie Hartwig Davis of HD Squared Architects, will tell how small actions and thoughtful design decisions for your own home, yard, and office, can make a difference in the bigger efforts to impact climate change.

Specials for kids: Kids can meet Homestead's barnyard animals and see our raptors "up close and personal" The Expo will offer face painting courtesy of the Southern High School Art Department.

Food and drink: Java 2 You coffee and Beards Creek BBQ food trucks will be open with their famous BBQ sandwiches, sides, beverages and more. Calvert Beer will be on-site to sample and/or purchase a glass. All proceeds to go to DACA.

Supporting sponsors include Annapolis Green, Anne Arundel Forestry Board, Davey Tree Experts, Hague Quality Water of Maryland, HD Squared Architects, Killarney House, Minute Man Press of Crofton, the Smithsonian Environmental Research Center (SERC), and Victor Stanley Furniture.

Gluten-Friendly Menu Available!

Join us for the Happiest of Hours

Mon-Fri 3pm-6:30pm

Davidsonville's ONLY

Traditional Irish Pub

Live Music

Fri-Sat 8:30pm

Sunday Brunch

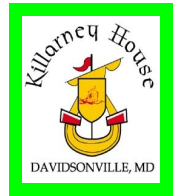
10am to 2pm





584 West Central Ave, Davidsonville, MD
www.KillarneyHousePub.com 410-798-8700

Many thanks to the generous, environmentally-minded SPONSORS of Green Expo 2020.



and our Exhibitors

(as of March 5)

- Annapolis Green
- Coco Gardens
- Davey Tree Experts
- Fairytale Farmette
- Norwex Microfiber
- Soles4Soles



- Victor Stanley
- Bartlett Tree Experts
- AA County Economic Development Corporation
- AA County Forestry Board
- AA County Recycling Division
- AA County Watershed Protection & Restoration
- AA County Watershed Stewardship Academy
- Arundel Rivers Federation
- Bay Community Health Center
- CEPA Chesapeake Environmental Protection Assn
- Hague Quality Water of Maryland

- DACA Davidsonville Area Civic Association
- Homestead Gardens Barnyard
- Homestead Gardens Landscaping & Nursery
- Leaf Filter North of Virginia, Inc.
- Maryland Department of the Environment
- Melaleuca – The Wellness Company
- Minuteman Press of Crofton
- Scout Troops 454 and 2018
- SERC Smithsonian Environmental Research Center

PHI

PHILLIPS HOME IMPROVEMENTS

MHIC# 67877. Fully Insured

- Kitchen & Bath Remodeling
- Finished Basements
- Ceramic Tile
- Roofing
- Painting
- Custom Carpentry
- Minor & Major Home Repairs

Visit our website: www.phi-md.com

410-798-9030

The Capital READERS' CHOICE 2-0-1-2 WINNER	The Capital READERS' CHOICE 2-0-1-3 WINNER	The Capital READERS' CHOICE 2-0-1-4 FINALIST	The Capital READERS' CHOICE 2-0-1-5 WINNER	Gazette READERS' CHOICE 2-0-1-5 WINNER	The Capital READERS' CHOICE 2-0-1-6 WINNER	The Capital READERS' CHOICE 2-0-1-7 FINALIST	The Capital READERS' CHOICE 2-0-1-8 WINNER	Gazette READERS' CHOICE 2-0-1-8 WINNER
--	--	--	--	--	--	--	--	--



PRIMARY CARE AND BEHAVIORAL HEALTH SERVICES FOR ALL AGES

Same Day Appointments Available

Accepting **NEW PATIENTS** and **MOST** insurances
 No insurance? We can Help!
 Spanish translator on staff

Two convenient locations!
 134 Owensville Road, **West River**, MD 20778
 6131 Shady Side Road, **Shady Side**, MD 20764

Medical
Phone: (410) 867-4700

Wayne Bierbaum, MD Nancy Bryant, CRNP
 Jonathan Hennessee, DO Ann Hendon, PA-C
 Thomas Sheesley, DO Rebecca Roth, CRNP

Behavioral Health
Phone: (443) 607-1432

Jana Raup, Ph.D., LCPC Narlie Bedney, LCPC
 Barbara Ripani, LCSW-C Dane Juliano, LCPC
 Sharon Burrowes, PMHNP-BC

Follow us @BayCommunityHC   www.baycommunityhealth.org

Requesting a Land Use Change: the first step toward rezoning by Ann Fligsten

Part of the 2040 Planning process is to develop a new land use map as part of the General Development Plan (GDP) to show where growth and other land uses could go. Requests for changes to the map county-wide are submitted to the Office of Planning & Zoning (OPZ). I assume that most are for upzoning, which means more density and changes in use of the land.

To review this map and applications go to <https://www.aacounty.org/departments/planning-and-zoning/long-range-planning/general-development-plan/index.html>. You can look at all the parcels that are subject to land use change requests on the map—yellow parcels. You can then click on the application and leave comments there.

If you have concerns notify Planning and Zoning, your representative on the Citizens Advisory Committee (CAC) preparing the GDP, and your representative to the County Council. The County Council will ultimately pass a new Land Use map when they pass the GDP. They will also make ultimate rezoning decisions later on in a separate rezoning process

For background reference, see the Small Area Plan for your region—on line at Anne Arundel County Planning and Zoning. These SAPs are now all ten years or older, but still provide a framework to evaluate requests for new land uses. Ask what are the major goals of your own SAP? Are they

still relevant? What does your community need or want in the way of uses? More commercial, more residential, more open space, transit? What issues are you hoping to solve with a GDP or comprehensive plan?

See page 6 for GAN’s meeting with Planning & Zoning Director Stephen Kaii-Zeigler; and pages 9 and 10 for commentary on a land use change requested in Davidsonville.

First notice: Save the Date!

DACA will hold its 47th Annual Meeting

June 4, 2020, beginning at 7:30 pm

in the Boy Scout Building at the DFRC.

Davidsonville Family Recreation Center

3789 Queen Anne Bridge Road


All members of DACA are invited to hear reports on DACA’s activities and to VOTE for officers and board members. Please join us!



LANCE'S LOCKSMITH COMPANY
Commercial / Residential / Industrial

Lance Edwards
President

Davidsonville MD 21035
AA Co 410-956-9299
• Fax 410-956-9039
• lance@lancelock.com

WOODDELL & PASSARO
Restorative and Esthetic Dentistry

James B. Wooddell, D.D.S.
Joseph C. Passaro, D.D.S.

3102 Davidsonville Road
Davidsonville, MD 21035

phone: 410-956-5555
fax: 410-798-5165
web: www.wpdentalgroup.com
email: patientcare@wpdentalgroup.com

Ray Alcorn MHIC #49798



ACORN RENOVATIONS
"Quality At An Affordable Price"

- Roofing
- Painting
- Bathrooms
- General Remodeling

410-956-0852 acornreno@gmail.com 301-805-5774

Recycling and plastic wrap; keep it clean!

Just don't put it in a yellow bin

After the most recent notice from DPW Recycling, it seems that almost none of the plastic packaging can go in your recycle bin. In frustration, I wrote to DPW to ask, "What are we supposed to do with the multitudinous plastic food wraps that are not clean? If DPW Recycling and the stores will not accept them, do you want them in the landfill?" The answer came straight from Rich Bowen, Manager, Recycling and Waste Reduction Division of DPW:

YES! If plastic film wraps and bags are not clean, they should be placed in the trash. You can take clean, dry wrap back to the grocery store or to the County's Recycling Centers. There are more than 18,000 locations across the U.S. and Canada, including many grocery stores.

Plastic film packaging is soft, flexible polyethylene (PE) packaging like grocery bags. It's also the wrap on many products including retail store bags, newspapers, produce, zip-top food storage bags, bread wrappers, cereal box liners, carry out bags and dry cleaning bags (clean, dry and free of receipts and clothes hangers). Also, product wrap on cases of water/soda bottles, paper towels, napkins, disposable cups, bathroom tissue, diapers, and female sanitary products, paper plates, and plastic shipping envelopes (remove labels) and deflated bubble wrap and air pillows, and furniture and electronic goods wrap.

Plastic film is recycled by the company Trex; they grind it into granules, mix it with saw dust, and use the mixture to make plastic decking. However, they can only accept clean and dry plastic film for this process, nothing with residue and, ultimately, bacteria. This is why DPW had to stop collecting it mixed with the rest of household recyclables, along with the fact that it harms the machinery that separates recycling.

The crunchy kind of plastic should go in the trash. **Do not recycle: degradable/compostable bags or film packaging; pre-washed salad mix bags; frozen food bags; candy bar wrappers; chip bags; snack wrappers; six-pack rings.**

DPW has never been able to accept this type of material because it is hybrid material (usually plastic and laminated aluminum) and the different layers cannot be separated out for recycling.

You can find more info on the film recycling program W.R.A.P. and also the items that are accepted with film plastic collection. If the item is not on this list, it should go in the trash. Go to

<https://www.plasticfilmrecycling.org/recycling-bags-and-wraps/plastic-film-education-individuals/learn-whats-recyclable/>

More info about Trex's process can be found at: <https://www.trex.com/why-trex/eco-friendly-decking/>



Don Saunders
 don@tildenfarm.com
 Office: 410.798.4334
 410.798.4720

1008 W. Central Ave.
 Davidsonville, MD 21035

www.tildenfarm.com
facebook.com/tildenfarm

- Natural Mulches
- Dyed Mulches
- Bag/Bulk Products
- Soils
- Aggregates
- Plants
- Trees
- Shrubs
- Tools



Simply Better.

Essex Bank

2120 Baldwin Avenue, Crofton
(410) 721-8444

EssexBank.com

Member FDIC

RECYCLE EVERYTHING OUR PROGRAM ALLOWS!

PLACE THE FOLLOWING ITEMS **LOOSELY*** IN YOUR RECYCLING CART:

<p>PAPER</p> <ul style="list-style-type: none"> cardboard and paperboard boxes, hard and soft cover books, sheets of paper, newspaper and inserts, magazines and catalogs, junk mail, file folders, envelopes, milk and juice cartons and boxes, photos 	<p>PLASTIC</p> <ul style="list-style-type: none"> bottles, jars, jugs, tubs, trays, cups, plates, utensils, buckets, storage totes, flower pots, furniture, trash cans and old recycling bins, toys, pools and playsets 	<p>METAL</p> <ul style="list-style-type: none"> aluminum, tin, and steel cans, empty aerosol cans, aluminum foil and pans 	<p>GLASS</p> <ul style="list-style-type: none"> all bottles and jars
---	---	---	--

NOT ACCEPTED IN CART

- plastic bags or wrap, trash, yard waste, styrofoam, clothing/leather, electronics, ceramics or dishes, food waste, motor oil containers, household hazardous waste, light bulbs, window glass or mirrors

PLACE LARGE PLASTIC ITEMS NEXT TO RECYCLING CART. ***PLEASE DO NOT BAG RECYCLABLES.** PLASTIC BAGS AND WRAP CAN BE RETURNED TO MOST LOCAL GROCERY AND BIG-BOX STORES.

Recycle More Often. **RECYCLING IN ANNE ARUNDEL COUNTY IS EASY! NO RINSING. NO SORTING. LEAVE LIDS AND LABELS ON.** YOU CAN RECYCLE! For more information, visit RecycleMoreOften.com.




New labels for your Recycling Bins

The Yellow Cart does a great job of containerizing loose recyclables and the wheels make it easy to place at the curb for collection. Another useful feature is the label located on top of the Yellow Cart's lid. The label provides important information on what is and is not accepted within the curbside recycling program. However, the labels on Yellow Carts distributed prior to August 2017 need to be updated.


The current cart label can be downloaded from the County's DPW website to your phone or tablet for quick reference; or you can print and post it in areas within the home where recyclables are collected.

If you prefer to have the actual adhesive label to place over the outdated one, we have them available for pickup at 2662 Riva Road, Suite 490, Annapolis, MD 21401. Kristen Lagana of DPW Recycling will have them at the Green Expo on March 21 to give to residents of Anne Arundel County.

For other recycling cart issues or repair needs, visit <https://www.aacounty.org/services-and-programs/recycling-container-requests> or call 410-222-6100, Monday through Friday, 7:30 am - 4:00 pm.

Richard Bowen, Manager
Recycling & Waste Reduction
See page 8 for a detailed list of recycling NO-NO.

Arundel Federal Savings Bank Mortgage Loan




MAKE YOURSELF AT HOME

Because it's a place to LAY YOUR HEAD


Mention this ad and get \$500 closing credit.*

Visit a branch or apply online at ArundelFederal.com today.

410.768.7800



*We reserve the right to withdraw this offer at anytime.




ABC APPLIANCE
Your Local Discount Store

IN BUSINESS FOR 43 YEARS!

WE DELIVER, INSTALL, AND REPAIR!

JOIN OUR PRIORITY CLUB TODAY!

It's as easy as A.B.C...

Always everyday low prices

Best personal service

Commitment to quality service

MAYTAG AMANA Whirlpool Scotsman GE ULINE KitchenAid

10% OFF LABOR ON REPAIRS
(Must be received at time of service. Cannot be used with any other discounts)

6 Mayo Road • 410-956-2020 • www.abcappl.com

GAN meets with P & Z Director

The Growth Action Network meets each quarter with Stephen Kaii-Zeigler, Director of the County Office of Planning and Zoning (P&Z), to discuss topics of land use and zoning. Part of the 2040 Planning process is to develop a new land use map as part of the GDP, showing where growth and other land uses can go. Applications for these changes go to the Planning Department for review. The January 28 meeting included the following topics:

The costs of growth to AA County: Are the costs of services for new developments covered by taxes paid?

What is the County doing to respond to climate change? Have Priority Funding Areas (PFAs) been evaluated in view of sea level rise?

Critical Area Law and the new Forest Conservation Law: Is clear cutting by land owners allowed? What are Greenways and how are they protected?

As part of the General Development Plan (GDP), property owners and developers can request changes to the county's Land Use Map that will be examined as part of the GDP process. Applications for these changes are reviewed by the County P&Z. GAN members and communities need to carefully study the recently posted map and make comments to Planning and Zoning on requests of concern. These are not requests for rezoning, but can be a first step to achieve a rezoning.

The Land Use Change Application Viewer maps all the properties for which an owner submitted an application. A pdf copy of the application may be viewed by clicking on the subject property. Note that the Viewer is intended to map all Land Use Change applications received, not only changes reviewed or made.

To see this map and its applications, go to <https://www.aacounty.org/departments/planning-and-zoning/long-range-planning/general-development-plan/index.html>. On the Map Viewer you can look at all the parcels marked in yellow that are subject to land use change requests.



The property owners and developers are getting ready for rezoning now. Residents need to review suggested changes to the land use map now and, if you have concerns, notify Planning and Zoning, the representative to the Citizens Advisory Committee (CAC) preparing the GDP, and your representative to the County Council. Be aware of requests for changes in the map. A few changes to the Land Use Map were requested in the last GDP process ten years ago. One was not for a zoning change, but when it came to comprehensive rezoning of the site over a year later, it was rezoned from Residential to Commercial because the Land Use Map had labeled the parcel Commercial. The rezoning was passed by the County Council and the parcel was rezoned for Commercial use.

What P&Z recommends is important in helping the County Council members reach a decision. They will ultimately pass a new Land Use Map when they pass the GDP. They will also pass ultimate rezoning decisions later on. Send your comments on the Plan2040 Draft Vision and Themes to plan2040@aacounty.org. Send your comments on the nine proposed Regional Planning Areas to plan2040@aacounty.org.

Ann Fligsten



Donald Shankle

Coldwell Banker Residential Brokerage

Office 410-224-2200

Mobile 410-562-1034

LIFETIME MEMBER DISTINGUISHED SALES CLUB
NEGOTIATING REAL ESTATE SALES SINCE 1981

Discover the difference experience makes!

www.thisisthewayhome.com



*Home is not a Place,
it's a Feeling*



Patuxent Riverkeeper Invites You to Join Friends and Clean Up Our River



Saturday, April 4, 2020 will be the clean-up date for many local community sites around the watershed. Some locales will hold river cleanups on other dates. We have a limited amount of supplies (trash bags, work gloves etc.) for sharing with sites registered with Patuxent Riverkeeper for the purposes of tallying and promotion/recruiting volunteers. We will post and promote available cleanup sites on our web site starting in March. Please inquire or register at info@paxriverkeeper.org if you would like to become a site captain, launch a new clean-up site or re-register an existing Spring cleanup.

Land Use Change asked for Central Avenue property

In preparation for the new General Development Plan—Plan2040—the office of Planning & Zoning has asked landowners to submit their applications for changes they want in the Land Use Map. Robert Rawlings has applied for a change in Land Use and Zoning Classification for his 4.95 acre property on the northeast corner of Central Avenue and Riva Road. It has a dwelling and outbuildings.

In the 2009 General Development Plan the land was classified as RA (Rural/Agricultural), but in the last go-round of requested re-zoning it was changed to SB—Small Business District—and now the owner is asking AA County Planning & Zoning Office to change it to Commercial under Plan2040. He does not live in Davidsonville and the property has been for sale for several years. (Page 10)

1/2 Off Vaccines
 (Rabies, Distemper-Parvo, FVRCP) **FOR NEW CLIENTS ONLY**
 Must be combined with a paid exam

Family Veterinary Clinic • 1413 Defense Hwy., Gambrills, MD 21054
www.FamilyVeterinaryClinic.com • 410-721-4545

**BAY BREEZE
 HEATING AND
 COOLING, INC.**

Contracts Available Free estimates
 Service all brands Financing (with approval)
 Indoor Air Quality Lifetime Warranties
 Residential Replacements Rebates Available

www.baybreezehvac.com
 1 888 300 3690

Land Use Change asked for Central Avenue property*(Continued from page 9)*

Interested residents can offer their comments online to AA County Planning and Zoning. The Avila Home Owners Association made this comment:

“A change in the classification of this particular property to Commercial would NOT be an appropriate land-use designation.

“The application accurately states that the ‘existing development patterns along Central Avenue and Riva Road in the vicinity of the Property are dominated by low-density residential uses.’ Existing commercial properties along this stretch are typically low-volume businesses without excess traffic other than the local community that frequents the business. As the application continues, it claims that the stretch of Central Avenue is trending commercial, which is factually false as there is currently no more than one commercial entity per mile along this stretch. The volume of commercial traffic along this area of Central Avenue is generally low. The church used as an example in the application has a true traffic signal as well as ingress/egress off the lower volume road. Churches typically have their highest traffic volume on Sunday mornings, which does not conflict with typical weekday traffic norms.


“The application’s frequent reference to its location at ‘an intersection with a traffic signal’ is extremely misleading. The ‘signalized intersection’ cited in the application is a flashing red/yellow light and not conducive to increased traffic at this intersection. Traffic from Riva Road has a flashing red and no left turn sign, while traffic on Central Avenue has a flashing yellow. Heavy traffic from Riva Road (and those ignoring the no left turn sign) and vehicles attempting to turn left out of the existing gas station cause hazardous situations for all travelers. Any proposed change to this property’s classification should only follow a rigorous traffic study and public notification of any proposed change to the traffic light or ingress/egress at this intersection.

“Land use and forest conservation is also of particular concern in this area. At the intersection cited in the application, flooding and run-off occur after every rain storm. Properties to the west and south of this intersection recently invested significant resources to mitigate erosion, flooding and runoff. Re-development of this property and the presumed increased hard surfaces in and around this intersection would only exacerbate these environmental problems.”

Ashley’s HOA also submitted a comment. DACA will write to P&Z to oppose this change in the Land Use Map.

PERSONALIZED TRAVEL SERVICES

Vacations



Family, Honeymoons, Cruises & Group Travel

TRAVEL BUG, LLC

410-798-4116
christi@travelbugllc.com www.travelbugllc.com

The Frame Shoppe

Custom Framing

2460 Riva Road
Annapolis, MD 21401

Gary Palmer, Jr
410-721-9479

Linda Lawrence
410-573-0434

www.TheFrameShoppelnc.com

**Delivery and installation
services available**

Hours

Monday 10:00~5:00

Tuesday 10:00~7:00

Wednesday 10:00~5:00

Thursday 10:00~7:00

Friday 10:00~5:00

Saturday 10:00~5:00



by Lisa VanBuskirk

The Board of Education is hosting Town Halls throughout the county in March, April, and May, which will provide opportunities to discuss school hours and other education topics with Board members.

These are at Northeast High School, March 19, Meade High School, Wednesday, April 8, and in South County on Thursday, May 7, in the cafeteria at Southern High School.

The comprehensive study contracted with Prismatic Services in July 2019 was released in January; it runs to 179 pages and contains 27 recommendations to improve operations, logistics, maintenance, facilities and bell times. There are some very insightful observations and recommendations within the report that often come down to a lack of procedure and oversight. The report concludes that if the inefficiencies identified were improved, bell times could be adjusted to either Elementary at 8:00 am and Middle and

High Schools at 9:00 am, or Elementary at 7:30 a.m., High School at 8:15 a.m., Middle School at 9:00 am, with no additional transportation cost. Therefore, the excuse that “it’s too expensive to change” is no longer valid.

At the Board of Education, on January 21, 23 people spoke for 90 minutes about the need to adjust school hours for elementary, middle, and high school students. Many emails were sent to the Board members. Several Board members spoke in favor of moving forward with school hours and investing in improving transportation in light of the consultant’s report; the Board also asked AACPS for a late February or early March workshop to get into specifics of implementation, with an eye on the 2020-2021 school year.

On February 6th, the Board asked that AACPS develop a draft Request for Proposal to hire an independent consultant to evaluate the operations of the Transportation Department, with the explicit goal of helping the late starting/releasing elementary schools as soon as possible and developing some options to resolve the early high school start times. The Board reviewed the scope of work and planned to discuss it at the March 20th meeting.

Schwallenberg's Permit Services Inc.



Diane Schwallenberg
Cell: 410-320-5902
diane.jamespermits@gmail.com

Over 40 Years Experience
1601 Bishop Road
Edgewater, MD 21037
Office/Fax: 410-956-5330





James Schwallenberg
Cell: 410-980-9868
schwallenbergpermits.com

PATRICK J. CALLAHAN
Attorney at Law
844 West Central Avenue
Davidsonville, MD 21035
E-mail: attycallahan@verizon.net
Telephone 410-798-7771
Facsimile 410-798-9990

Providing legal services in Anne Arundel County
for more than 30 years





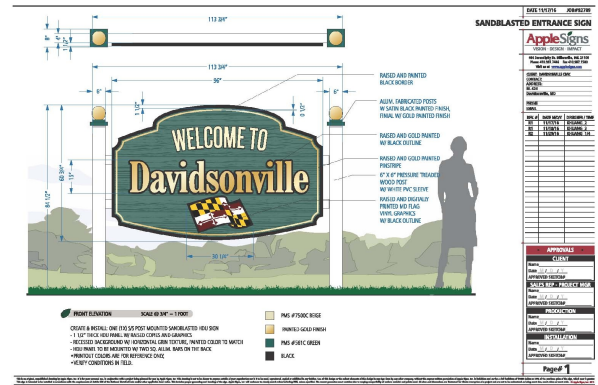
Chris Grizzell
Branch Manager
NMLS #476320
Cell / Direct: 443-889-6888
Office: 443-451-3430
Fax: 443-451-9430
cgrizzell@nfm lending.com
www.nfm lending.com/cgrizzell

Start School Later, from page 11

The paragraph that excited me the most is: “Recommendations and costs associated with changes to school start and dismissal time scenarios serve essentially to compress said times to allow for a later start for those schools with the earliest start times and an earlier completion for those schools with the latest dismissal times: Develop, analyze, and cost out various optimization models to assist AACPS in investigating compressing school start and dismissal times. Determine the impact and costs of the various scenarios on the AACPS Transportation Department and associated school operations. Also examine opportunities to cost effectively shorten the duration of the longest bus route run times where possible and practicable.”

Other work items include reviewing staff organizational structure, daily operations, bus driver training/recruitment/shortages, communication with stakeholders, data management tools for bus routing and contractor payments, transportation facilities (ie bus depots), comparison to other MD counties, and a few other items. Honestly, my initial reaction is that the scope of work is thoughtful and thorough. I believe this will be very helpful to the Transportation Department operations in general and is the best way to get to healthy, safe, and age-appropriate school hours for all students.

The Sign is coming!



Making progress! Maryland Department of Transportation sent another permit application, this time for a State Highway Administration Utility Permit. Many thanks to Tom Conley of the Landscaping Programs Division of SHA, for walking me through the Utility application so I could send it to Homestead Gardens for the next step, which good Sean Meagher of Homestead’s Landscaping Division filled and submitted. Then Sean filled and sent in the last step for a Traffic Control Permit. They aim to have this job done **before March 21** in time for DACA’s Green Expo. We shall see!

FOUR LEGS
ANIMAL HOSPITAL

Your **Pet +**
Healthy

dental care
internal medicine
surgery
behavior problems
healthcare
itching allergies
vaccines

www.fourlegs.net
410-798-5222
1329 West Central Ave., Davidsonville, MD 21035

Kent Smith 240-508-3813 INSURED
FREE ESTIMATES MHC # 43396
410-721-0858

BAY AREA EXTERIOR PRESSURE WASHING

Commercial • Residential
Homes (all surfaces) • Decks • Sidewalks • Patios
Wood Preservative Treatments • Staining

Gregory T. Wheat
CABINETMAKER

Fine Woodwork
Architectural Millwork
Special Cabinetry & Furniture
Design with Heart & Spirit
Integrity, Honesty & Value

1080 MT. AIRY ROAD
DAVIDSONVILLE, MD 21035

EST. 1974
410-798-6263



Residential development often costs taxpayers more than we have been led to believe

*New ideas for the new GDP ...
Food for thought*

If you feed your garden you should expect abundant tomatoes. If you practice a sport you should expect to improve. Generally, if you want more of something there is a formula for achieving that goal. The formula for residential growth stimulation is commonly called “money.”

Perhaps unknowingly, Anne Arundel County has pursued policies that have fostered unsustainable development patterns. For decades our impact fee policies for residential growth have subsidized most residential development. Money saved by skimping on capital expenses for services has provided significant savings for developers and buyers. In hindsight it is easy to see that essential public services—schools, roads, parks, fire, police and the like—are inadequate to provide and maintain quality facilities for our growing population. Costs of environmental impact are also usually ignored.

Communities that take planning seriously also find that new tax revenue from most residential growth does not pay ongoing costs of associated public services. On the average, the ongoing operating costs of services like education, public safety, and parks and recreation demanded by new residential development substantially exceed the new tax revenue. Multiple studies have documented this. One study in Frederick County showed that for each dollar in residential taxes received, the County expended an average of \$1.14 in County services to those properties. A similar study in Loudoun County showed that the County expended \$1.28 for residential properties per tax dollar. Stated simply, it’s a net loss.

Of course, not all residential growth looks alike, works alike nor costs alike. The location and type of development can generate varying public costs. Suburban sprawl can

have the greatest cost impact on our environment, roads, and schools while transit-oriented development and redevelopment can have a lower impact. Other sources of tax revenue, such as commercial properties, demand fewer services and can generate a revenue surplus that also helps subsidize a portion of the residential revenue shortfall.

In Anne Arundel County, most of the residential tax losses have been accumulated and concealed in the enormous backlog of maintenance and renovation obligations for our essential public infrastructure. Anne Arundel County’s 2017 Spending Affordability Committee (SAC) Report noted, “For the past several years, the Committee has expressed concern over a number of budgetary issues.... The accumulated deficit for the maintenance and renovation of capital assets, including schools, roads, and other essential County infrastructure, was highlighted in the SAC report for FY2010 as approaching \$2 billion and growing at a rate of nearly \$100 million per year. The proposed increase in capital spending FY 2016-2021 is a great start provided it is mostly spent on aging assets as opposed to new items. In addition, the impact fees charged still remain below 100 percent of the calculated costs with roads being the worst at just over 50 percent based on the 2008 Impact Fee study. The SAC recommends that the County move toward 100 percent of calculated costs (adjusting for inflation) for Impact Fees. This is consistent with the 2008 Report by the Impact Fee Advisory Committee.”

Our public officials need to undertake an honest accounting of the financial consequences of Anne Arundel’s growth management policies. Fiscal analysis should distinguish residential sprawl vs. residential growth in designated areas with access to transportation alternatives, redevelopment opportunities and other factors.

A full and accurate recognition of the revenue and all the expenses produced by existing and new development will lead to strategies that are both economically and environmentally sound and in the public interest.

For more information go to www.annearundel-livable.org



50% OFF
YOUR NEXT ORDER
PROMO CODE MMP50



2217A Defense Highway
Crofton, MD 21114

410.451.0218

info@mmpcrofton.com
mmpcrofton.com

Receive **50% Off**
on any new order over **\$100.00***

Must Reference Promo Code, Up To \$100 Off. Terms and Conditions Apply. Call Store For Details



We are your Local printing company here to help you with:

-  **Graphic Design**
-  **Printing & Copying**
-  **Promotional Products**
-  **Signs & Banners**
-  **EDDM & Direct Mail**

and so much more!

The first new legislation of the year!
*From James Kitchin, District 7
 Community Constituent Representative*

On February 14, the County Executive was proud to sign **Bill 1-20** into law, which will allow Anne Arundel County to install cameras on school bus stop signs to capture drivers who put our students in danger by illegally passing a stopped school bus. Thank you to the County Council for unanimously voting in favor of this bill, and thank you to Superintendent Dr. Arlotto, Anne Arundel County Public Schools, and the members of the Anne Arundel County Board of Education for your commitment to keeping our students safe.

County Executive Steuart Pittman celebrated the bill signing with Council Chair Allison Pickard, and members of the Board of Education and AACPS.



Contact information for Government Officials

State District 33

- Senator Edward R. Reilly 410-841-3568 edward.reilly@senate.state.md.us
- Senator Sarah K. Elfreth 410-841-3578 sarah.elfreth@senate.state.md.us
- Del. Michael E. Malone 410-841-3510 michael.malone@house.state.md.us
- Delegate Heather Bagnall 410-841-3406 heather.bagnall@house.state.md.us
- Delegate Sid Saab 410-841-3551 sid.saab@house.state.md.us

Anne Arundel County

- County Executive Steuart Pittman 410-222-1821 expitt99@aacounty.org
- Council District 7 Jessica Haire 410-222-1401 jessica.haire@aacounty.org
- District 7 Assistant Matt Pipkin 410-222-2417 ccpipk33@aacounty.org
- James Kitchin, Community Constituent representative for Council District 7, can be reached at exkite22@aacounty.org.

Email addresses of AA County Board of Education members

- dschallheim@AACPS.org
- mcorkadel@aacps.org
- mkellis@aacps.org
- rleib@aacps.org
- cantwine@aacps.org
- terry.gilleland@aacps.org
- Eric.Grannon@aacps.org
- Julie.Hummer@aacps.org
- ralvi@aacps.org
- superintendent@aacps.org
- garlotto@aacps.org
- boardoffice@aacps.org

WEST END
Sports Bar & Grill
 Corner of West Street and Route 2
 Open 7 Days from 11am - 2am
 Late Night Kitchen Mon-Thur until Midnight and Fri-Sun until 1am
MARYLAND The OFFICIAL TERPS.
 Annapolis Viewing HQ
 Please join us, Steve Leonard, Greg & Matt Walling and the staff at WEST END!

Support DACA's Scholarship Fund

DACA's Board of Directors invites you to contribute to the Scholarship Fund so we can offer larger grants to applicants. To support the Fund, make your check payable to DACA and write "scholarship" on the memo line. Every bit helps—no amount too small or too large—whether coming in to DACA or going out to a recipient. Flyers telling how to apply for financial aid for education for yourself or your children will be available at Green Expo.



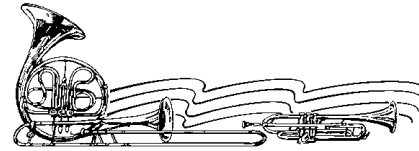
LONDONTOWNE SYMPHONY ORCHESTRA

Season Finale!
With students from the
Annapolis Symphony Academy
performing Tchaikovsky's Symphony No. 4
Archbishop Spalding High School
June 6, 2020, 7:30 pm

Our mailing address is:
Londontowne Symphony Orchestra
PO Box 926, Edgewater, MD 21037

Go to <http://lso-music.org> to purchase tickets, sign up for our newsletter, and to donate.

SOUTH COUNTY CONCERT ASSOCIATION



Our 44th concert season
2019-2020 Season

South County Concert Association
Southern High School, 4400 Solomons Island Road
(Route 2), Harwood, MD 20776

Cosmic Symphony Sunday, March 22 3:00pm
Broadway Bound—3 Redneck Tenors
Wednesday, April 15 7:30pm

Anne Arundel Community Concert Association
Severna Park High School, 60 Robinson Road,
Severna Park, MD, 21146

The Maxwell Quartet Friday, April 3, 2020 7:30pm

In December, the subscription cost for the remainder of the season was reduced from \$60 to \$50. You can purchase tickets by credit card, by mail, or by bringing your payment to a concert. To encourage young people to attend, students age 18 and under will be admitted free.

Please check out our updated website at www.southcountyconcertassociation.org.

Betty Knupp, Membership Chair, 410-956-4881.

Anne Arundel Medical Center

The Auxiliary of Anne Arundel Medical Center, 2001 Medical Parkway, Annapolis, needs volunteers ages 18 and older, daytime and evening hours, weekdays and weekends. Positions include opportunities in patient interaction, customer service, and retail assistance. The auxiliary has been serving the hospital since 1944. Volunteers are an integral part of AAMC's mission of providing patient-centered, high-quality health care services. Please call the auxiliary office 443-481-5050 to volunteer or to request more information.

American Sprinter Vans of Annapolis



www.AmericanSprinter.com 410-897-4297
195 Defense Highway in Annapolis
A Dealership for Buses too...



is a magazine dedicated to residents of our fair community that features families and individuals who make Davidsonville the place we love. It also features an occasional piece of local history or a story of nostalgic interest. If you are a Davidsonville resident not currently receiving the magazine and would like to, please send your email address to david.grabau@n2pub.com. David Grabau will send you a free PDF version each month that you can open and read.



**Anne Arundel County Farmers' Market
Riva Road at Truman Parkway**

Market Days

Sundays 10:00 - 1:00 all year round

Wednesdays 7:00~noon, starts May 20

Presenting fresh vegetables, salad greens, meats, artisan cheese, pasture-raised eggs, fresh-cut culinary herbs, milk, yogurt.

Every Sunday: hot breakfast and baked goods.

Watch us on local television!

Your Farmers Market Today!

Comcast channel 99 and Verizon channel 39

Fridays at 5:30 pm, Wednesdays at 11:30 am

For more information, check out the website at

www.aacofarmersmarket.com, or contact

at email aacfmsecretary@gmail.com



DACA OFFICERS

Term to June 2020

President Bruce Stein 410-956-3759

bsteinesq@yahoo.com

Vice President H. Edward Woods 410-798-0764

pgchief181@gmail.com

Secretary Gail Enright 410-533-4766

info@daca-md.org

Treasurer Brian Stanton 410-798-9318

Brian_stanton63@yahoo.com

DIRECTORS

Term to 2022

Christopher Asher christopher.asher@ampf.com 410-798-4704

Sean Healy roundrockinn@aol.com 301-848-6577

Meredith McQ-Greason mrmcquoid@gmail.com 410-533-9923

Cynthia Morgan glfriday@yahoo.com 240-393-1311

Term to June 2021

Andrew Healy andrewjchealy@gmail.com

Phil Livingstone livingstonepl@verizon.net 443-607-8666

Lynn Marano billandlynnmarano@verizon.net 410-798-6670

Melissa Stanton brimeli@yahoo.com 443-858-7470

Term to June 2020

Jeff Bishop jbgansett1@aol.com 410-808-5597

Kate Fox fox4smith@verizon.net 410-956-4852

Wayne Reid wayne.reid@c21nm.com 410-798-9490

Martin Zehner use the phone 410-798-5083

The Villager

Newsletter of the Davidsonville Area Civic Association

P. O. Box 222, Davidsonville, Maryland 21035

DACA web site: www.daca-md.org

Bruce Stein President 410-956-3759

Gail Enright Editor 410-533-4766

info@daca-md.org and on Facebook

The Villager is published at least six times each year. We invite your written and signed contributions of letters, articles, and community notices.



J O I N D A C A

MEMBERSHIP: I wish to be a member of DACA and receive the *VILLAGER*. At \$10.00 per year for each person, my check for \$ _____ is enclosed, payable to DACA for membership for _____ person(s) for _____ year(s). Also enclosed is my contribution of \$ _____ to DACA to help with the expenses incurred in the effort to maintain the quality of life that brought us to the Davidsonville area and to help guide the growth and development of our community OR _____ for the Scholarship Fund

DUES ARE \$10.00 PER PERSON PER YEAR

Mail to: DACA, P.O. BOX 222, Davidsonville, MD 21035.

Name(s) _____ email _____

Address _____

Telephones _____ Today's date _____

Your comments, your interests?