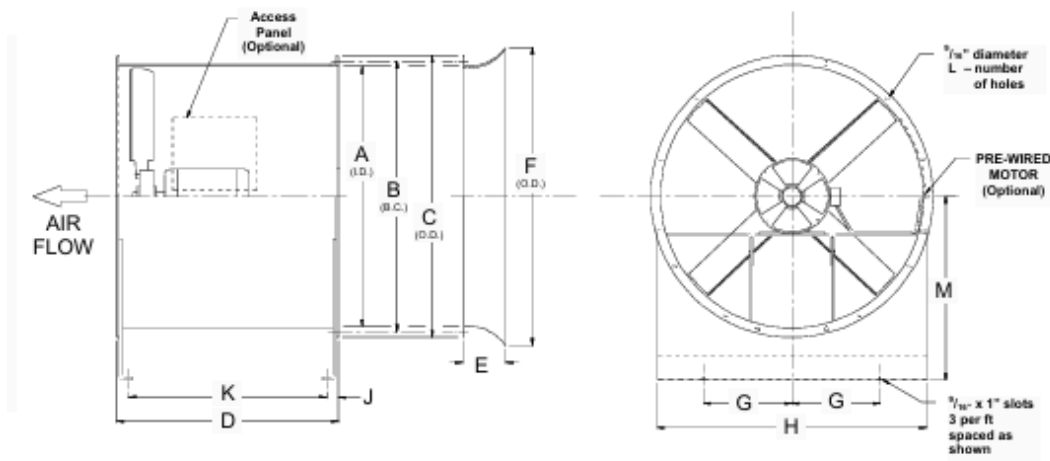




TDC Series Direct Drive Tube Axial Fans



TDC duct fans are suitable for application where motor location in the air stream is satisfactory. Direct driven models require less maintenance, offer longer operating life and increased efficiency. The propeller assembly is connected directly to the motor shaft. There are no fan bearings or belts that require maintenance. TDC models have from 3 to 6 cast aluminum airfoil blades that are securely attached to a heavy cast aluminum hub. Blade pitch is set for catalog performance. Type TDC fans incorporate specifically engineered airfoil sections and hub sizes for optimum efficiency and physical strength.



Dimensions in Inches														
Fan Size	A	B	C	D	E	F	G	H	J	K	L	M	Access Panel (Optional)	Outlet Area, ft ²
18	18 1/8	19 7/8	21 3/8	20	2 1/16	24	7	21 1/4	1 5/8	16 3/4	6	14	8 x 8	1.79
24	25 1/2	27 3/8	28 7/8	28	6	30 1/4	9	26 1/2	1 5/8	24 3/4	8	17	10 x 12	3.55
30	31 1/4	33 1/8	34 5/8	28	6	36 1/4	12	33	1 11/16	24 5/8	8	21 1/4	10 x 15	5.33
36	37 1/4	39 1/4	40 3/4	36	6	42 1/4	16	40	1 11/16	32 5/8	12	25	12 x 15	7.57
42	43 1/4	45 1/4	46 3/4	36	6	48 1/2	18	45	1 3/4	32 1/2	12	29 1/4	16 x 18	10.20
48	49 1/4	51 1/4	52 3/4	36	6	54 5/8	19	47	1 3/4	32 1/2	16	32 1/2	16 x 18	13.23
54	55 1/8	57 1/4	58 3/4	36	6	59 1/2	22	53	1 3/4	32 1/2	16	36 1/2	16 x 18	16.57
60	61 3/8	63 1/2	65	36	6	65 5/8	25	59	1 3/4	32 1/2	16	40	16 x 18	20.55

- Options /Accessories:**
- TBC - Belt Drives
 - VFD - Variable Frequency Drives
 - IG - Inlet bell with guard
 - AP - Access Panel
 - MF - Mounting feet
 - CF - Companion flange(s)
 - PW - Pre-wired motor
 - DS - Disconnect switch
 - EPX - 6 mil epoxy finish
 - HDG - Hot dip galvanizing
 - HH - High Heat/Smoke Purge
 - EXP - Explosion Proof Motor



TDC Series Direct Drive Tube Axial Fans

Item No.	Cubic Feet Per Minute (CFM) at Static Pressure ¹												Fan Model ²	Fan Size	Motor HP	Fan RPM ³	Sone Rating ⁴	Max BHP ⁵	Blade No.	Desc. Pitch	Approx. Ship Wt.
	0"	1/8"	1/4"	3/8"	1/2"	5/8"	3/4"	1"	1 1/4"	1 1/2"	1 3/4"	2"									
1	3,387	3,014	---	---	---	---	---	---	---	---	---	---	TDC18H11	1/3	1160	12.1	0.28	4	35°	139	
2	2,991	2,829	2,628	2,393	2,039	---	---	---	---	---	---	---	TDC18H17	1/3	1750	16.3	0.38	4	16.5°	126	
3	3,922	3,725	3,499	3,205	2,845	---	---	---	---	---	---	---	TDC18J17	18	1/2	1750	19.9	0.57	4	24°	135
4	4,854	4,636	4,355	4,030	---	---	---	---	---	---	---	---	TDC18K17	3/4	1750	23	0.85	4	32.5°	139	
5	5,408	5,235	5,038	4,777	---	---	---	---	---	---	---	---	TDC18L17	1	1750	23	1.14	6	34.5°	140	
6	5,748	5,067	4,270	---	---	---	---	---	---	---	---	---	TDC24H11	1/3	1160	16.7	0.37	3	16°	214	
7	7,144	6,415	5,589	4,624	---	---	---	---	---	---	---	---	TDC24J11	1/2	1160	17.7	0.58	3	23°	214	
8	8,050	7,420	6,730	---	---	---	---	---	---	---	---	---	TDC24K11	3/4	1160	21	0.84	4	26.5°	217	
9	8,253	7,849	7,398	6,869	6,140	---	---	---	---	---	---	---	TDC24L11	24	1	1160	21	1.13	6	25°	228
10	10,065	9,613	9,141	8,632	8,090	7,537	6,911	---	---	---	---	---	TDC24M17	1 1/2	1750	33	1.73	3	20.5°	228	
11	10,654	10,280	9,861	9,448	9,024	8,584	8,110	---	---	---	---	---	TDC24N17	2	1750	43	2.22	4	21.5°	228	
12	12,959	12,569	12,152	11,664	11,149	10,616	10,032	---	---	---	---	---	TDC24P17	3	1750	50	3.40	4	29°	255	
13	9,270	8,183	6,863	---	---	---	---	---	---	---	---	---	TDC30J8	1/2	870	17.1	0.57	4	17.5°	282	
14	11,047	9,907	8,499	---	---	---	---	---	---	---	---	---	TDC30K8	3/4	870	19.5	0.83	4	24°	282	
15	11,593	10,803	9,837	8,603	---	---	---	---	---	---	---	---	TDC30L8	1	870	20	1.11	6	23.5°	313	
16	12,087	11,120	9,992	8,644	7,302	---	---	---	---	---	---	---	TDC30L11	1	1160	25	1.12	3	18.5°	282	
17	13,692	12,861	12,007	11,082	9,940	---	---	---	---	---	---	---	TDC30M11	1 1/2	1160	29	1.68	4	21°	313	
18	15,544	14,675	13,769	12,708	11,531	---	---	---	---	---	---	---	TDC30N11	30	2	1160	32	2.25	4	26.5°	325
19	17,457	16,817	16,126	15,340	14,521	13,540	---	---	---	---	---	---	TDC30P11	3	1160	36	3.39	6	28.5°	374	
20	17,186	16,561	15,870	15,191	14,469	13,710	12,908	11,069	---	---	---	---	TDC30P17	3	1750	48	3.38	3	16.5°	313	
21	20,656	20,146	19,566	19,001	18,434	17,851	17,247	15,897	14,181	---	---	---	TDC30Q17	5	1750	59	5.78	4	21°	325	
22	22,658	22,289	21,910	21,519	21,057	20,561	20,124	19,182	18,082	16,844	---	---	TDC30R17	7 1/2	1750	64	8.59	6	22.5°	374	
23	26,047	25,630	25,209	24,777	24,309	23,781	23,274	22,255	21,099	---	---	---	TDC30S17	10	1750	71	11.34	6	28°	397	
24	10,213	8,623	6,463	---	---	---	---	---	---	---	---	---	TDC36J8	1/2	870	22	0.57	3	7.5°	460	
25	12,849	11,224	9,150	---	---	---	---	---	---	---	---	---	TDC36K8	3/4	870	24	0.83	3	13.5°	471	
26	14,826	13,058	11,060	---	---	---	---	---	---	---	---	---	TDC36L8	1	870	25	1.15	3	19.°	508	
27	16,901	15,471	13,952	11,969	---	---	---	---	---	---	---	---	TDC36M8	1 1/2	870	31	1.69	4	21.5°	519	
28	18,868	17,320	15,745	13,697	---	---	---	---	---	---	---	---	TDC36N8	2	870	31	2.25	4	28°	565	
29	21,678	20,524	19,284	17,715	15,088	---	---	---	---	---	---	---	TDC36P8	3	870	37	3.38	6	30°	585	
30	12,019	10,961	9,689	8,192	---	---	---	---	---	---	---	---	TDC36L11	1	1160	33	1.12	3	5°	471	
31	15,483	14,415	12,960	11,705	10,057	---	---	---	---	---	---	---	TDC36M11	1 1/2	1160	37	1.68	3	10.5°	508	
32	18,183	16,926	15,677	14,330	12,522	10,075	---	---	---	---	---	---	TDC36N11	36	2	1160	40	2.28	3	15.5°	519
33	20,727	19,728	18,625	17,538	16,331	14,783	11,910	---	---	---	---	---	TDC36P11	3	1160	48	3.37	4	18°	565	
34	24,988	24,175	23,311	22,457	21,564	20,581	19,423	15,686	---	---	---	---	TDC36Q11	5	1160	57	5.76	6	22.5°	585	
35	16,873	16,048	15,250	14,470	13,660	12,740	---	---	---	---	---	---	TDC36P17	3	1750	71	3.45	3	5°	508	
36	22,397	21,603	20,795	19,972	19,130	18,266	17,379	15,493	---	---	---	---	TDC36Q17	5	1750	74	5.7	3	10.5°	519	
37	27,320	26,558	25,761	24,961	24,152	23,327	22,482	20,710	18,698	---	---	---	TDC36R17	7 1/2	1750	79	8.51	3	16°	565	
38	31,710	30,943	30,091	29,285	28,476	27,649	26,802	25,006	22,913	---	---	---	TDC36S17	10	1750	74	11.42	3	21.5°	585	
39	36,756	36,138	35,507	34,862	34,202	33,525	32,832	31,377	29,772	27,880	---	---	TDC36T17	15	1750	91	17.17	4	25°	635	
40	40,658	39,900	39,152	38,414	37,686	36,967	36,257	34,834	33,306	---	---	---	TDC36U17	20	1750	92	21.84	4	30°	668	

Larger Sizes available (42, 48, 54 & 60) Call for performance