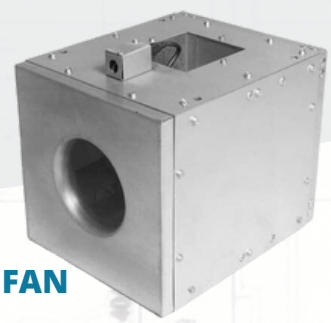




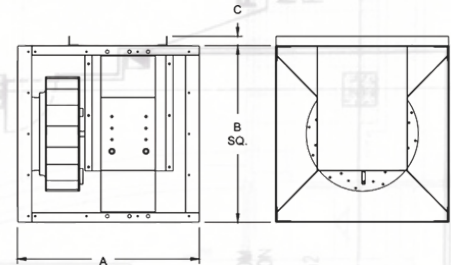
**AZ-SQDA**

**DIRECT DRIVE CENTRIFUGAL IN-LINE DUCT FAN**



**STANDARD FEATURES**

- Rigid internal cross bracing system properly supports drive
- Out-of-airstream open drip-proof motors are isolated for protection from exhaust airstream
- Three side panels are removable for total access to internal components
- Aluminum centrifugal wheel is a non-overloading, backward-inclined design and is computer balanced
- Overlapping wheel and deep-spun venturi minimize noise<sup>2</sup> and air turbulence, increasing efficiency
- Permanently affixed wheel balance weights assure vibration-free operation.
- Galvanized outer skin protects against corrosion and matches common duct material
- AMCA Seal assures certified rating of air and sound performance
- UL Listed for Standard 705
- Disconnect device with factory mounted and wired junction box is standard
- Direct-drive assembly reduces maintenance and operating costs
- Variable speed control is available on most models
- Drive compartment isolates motor from airstream



**DIMENSIONS**

SIZE	A	B	C
06-10	17	14	--
12	25 3/4	18	13/8
13	26 3/8	20	13/8
15	27 7/8	23	13/8
16	27 3/8	25 1/2	13/8
18	27 1/4	28 1/2	13/8



**AZ-C**

**Type C Propeller Fans**

Type C wall propeller fans are used for general ventilation and are designed for efficiency and economy. Suggested uses include commercial installations such as warehouses, schools, hospitals, parking garages and industrial uses such as process plants, wastewater treatment plants, and manufacturing facilities.

These propeller fans are rugged and dependable and are available in a wide selection of sizes and performance. These fans can be arranged for supply, exhaust or a combination of both. (See application section for each fan type for proper selection.) These fans are offered with a wide selection of accessories to complete a well-balanced and specifically engineered air moving system.