

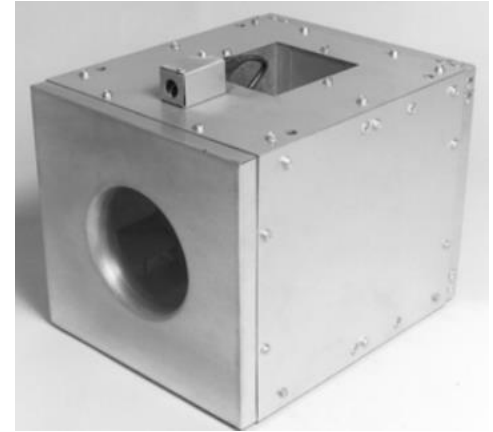


AZ-SQDA

DIRECT DRIVE CENTRIFUGAL IN-LINE DUCT FAN

STANDARD FEATURES

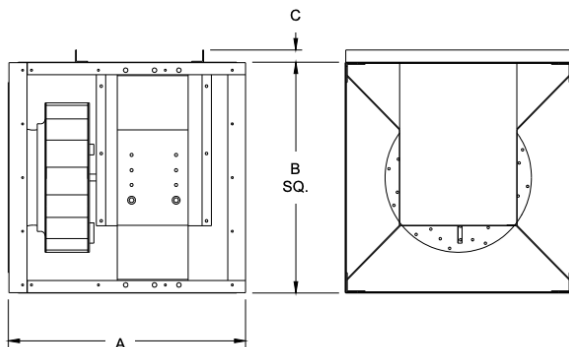
- Rigid internal cross bracing system properly supports drive
- Out-of-airstream open drip-proof motors are isolated for protection from exhaust airstream
- Three side panels are removable for total access to internal components
- Aluminum centrifugal wheel is a non-overloading, backward-inclined design and is computer balanced
- Overlapping wheel and deep-spun venturi minimize noise and air turbulence, increasing efficiency
- Permanently affixed wheel balance weights assure vibration-free operation.
- Galvanized outer skin protects against corrosion and matches common duct material
- AMCA Seal assures certified rating of air and sound performance
- UL Listed for Standard 705
- Disconnect device with factory mounted and wired junction box is standard
- Direct-drive assembly reduces maintenance and operating costs
- Variable speed control is available on most models
- Drive compartment isolates motor from airstream



Duct mounted square in-line fans shall be of the AZ-SQDA centrifugal type as manufactured by ILG Industries of American Coolair Corporation (individual models to be listed in fan schedule). Units shall bear the AMCA Certified Ratings Seal for air and sound performance. Housing and rigid frame of the fans to be galvanized steel, with wheel and venturi overlapping for efficient operation. Three sides of the unit are to be removable for access to the inside fan components and drive. Drive construction shall be of the direct-drive design. The line bore hub shall be mounted onto the backplate of the centrifugal wheel. The centrifugal wheel shall be heavy gauge aluminum with backward-inclined, non-overloading blades and be computer balanced. Motor shall be open construction, NEMA design B. The unit shall be equipped with a safety disconnect device. Optional variable speed control on most models allows for field adjustment and system balance. (Backdraft damper, epoxy coating and other accessories shall be listed in the fan schedule.)

DIMENSIONS

SIZE	A	B	C
06-10	17	14	--
12	25 3/4	18	1 3/8
13	26 3/8	20	1 3/8
15	27 7/8	23	1 3/8
16	27 3/8	25 1/2	1 3/8
18	27 1/4	28 1/2	1 3/8



ALL RIGHTS RESERVED TO D-VAC SALES INC.
200B VERDI STREET, FARMINGDALE NY 11735

SALES@DVACHVAC.COM

516-256-3131



HVAC Manufacturer's Representative



AZ-SQDA

DIRECT DRIVE CENTRIFUGAL IN-LINE DUCT FAN

PERFORMANCE DATA

SQDA12																CFM AT STATIC PRESSURE			MOTOR HP	SPEED	RPM
0.00		.125		.250		.375		.500		.625		.750		1.00		1.25					
BHP	SONE	BHP	SONE	BHP	SONE	BHP	SONE	BHP	SONE	BHP	SONE	BHP	SONE	BHP	SONE	BHP	SONE				
1022		928		826		713												1/8	YES	1025	
0.07	6.3	0.09	5.9	0.09	5.7	0.10	5.5														
1721		1656		1603		1553		1494		1430		1370		1238		1078		½	NO	1725	
0.36	15.9	0.38	15.6	0.39	15.2	0.41	14.7	0.43	14.5	0.44	14.6	0.45	14.7	0.46	14.5	0.46	14.0				
1746		1682		1630		1580		1523		1460		1400		1273		1117		½	YES (ESM)	1750	
0.37	16.3	0.39	16.1	0.41	15.6	0.43	15.1	0.44	14.9	0.45	14.9	0.47	15.1	0.48	14.9	0.48	14.4				

SQDA125																CFM AT STATIC PRESSURE			MOTOR HP	SPEED	RPM
0.00		.125		.250		.375		.500		.625		.750		1.00		1.25					
BHP	SONE	BHP	SONE	BHP	SONE	BHP	SONE	BHP	SONE	BHP	SONE	BHP	SONE	BHP	SONE	BHP	SONE				
2065		1954		1850		1737		1600		1443								1/3	YES	1075	
0.22	12.7	0.24	11.3	0.26	10.4	0.27	10.0	0.28	9.0	0.29	8.4										
3026		2947		2873		2801		2731		2659		2581		2402		2195		1	YES (ESM)	1575	
0.69	23	0.72	22	0.75	21	0.78	20	0.81	20	0.83	20	0.85	20	0.88	18.8	0.90	18.5				
3314		3242		3173		3107		3043		2978		2912		2765		2595		1	NO	1725	
0.91	26	0.94	25	0.97	25	1.00	24	1.03	23	1.06	24	1.03	23	1.14	23	1.16	22				

ALL RIGHTS RESERVED TO D-VAC SALES INC.
200B VERDI STREET, FARMINGDALE NY 11735

SALES@DVACHVAC.COM

516-256-3131



HVAC Manufacturer's Representative