

# I Saw The Light

Words and Music by  
Hank Williams, Sr.

$\text{♩} = 112$

## VERSE

G

G/B



1. I wan - dered so aim - less, — life filled with sin,  
2. Just like a blind man I wan - dered a - long,  
3. I was a fool to — wan - der and stray,

5

C

G

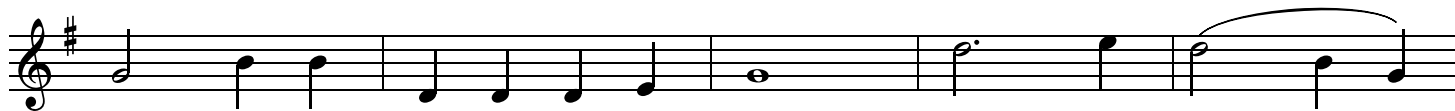


I would - n't let my dear Sav - ior in; Then Je - sus  
Wor - ries and fears I claimed for my own; Then, like the  
Straight is the gate and nar - row the way; Now I have

10

C/G

G



came like a strang - er in the night— Praise the Lord! \_\_\_\_\_  
blind man that God gave back his sight— Praise the Lord! \_\_\_\_\_  
trad - ed the wrong for the right— Praise the Lord! \_\_\_\_\_

## CHORUS

15

G/D

D<sup>7</sup>

G

G



I saw the light. I saw the light, \_\_\_\_\_ I saw the  
I saw the light.  
I saw the light.

20

C

G



light, \_\_\_\_\_ No more in dark - ness, no more in night; \_\_\_\_\_ (And)

CCLI Song # 45064

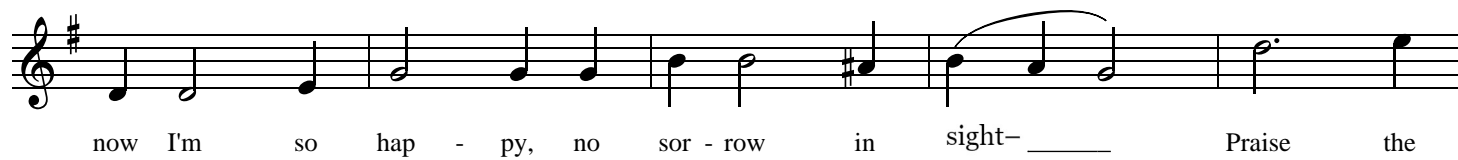
© 1948. Renewed 1975 Sony/ATV Acuff Rose Music

For use solely with the SongSelect® Terms of Use. All rights reserved. www.ccli.com

CCLI License # 3231791

25

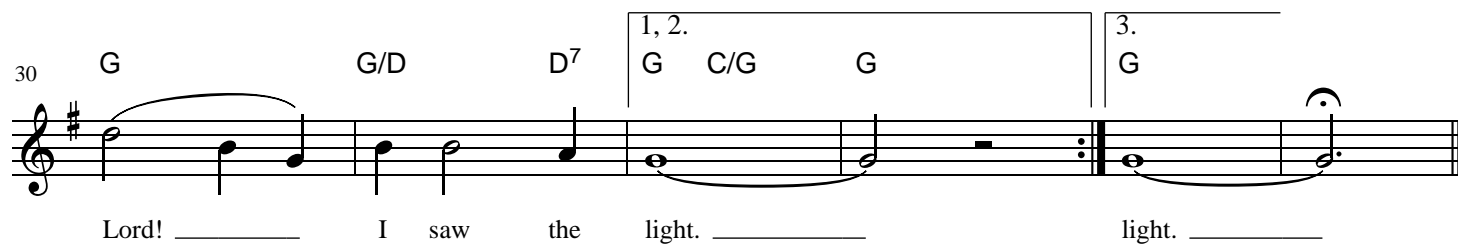
C/G



now I'm so hap - py, no sor - row in sight- \_\_\_\_\_ Praise the

Detailed description: This block contains the musical notation for measures 25 through 29. The staff is in treble clef with a key signature of one sharp (F#). The melody consists of eighth and quarter notes. A slur covers measures 25-26, and another slur covers measures 27-28. Measure 29 ends with a half note. The lyrics are written below the staff, with a long line for a vocal extension in measure 28.

30



Lord! \_\_\_\_\_ I saw the light. \_\_\_\_\_ light. \_\_\_\_\_

1, 2.  
G C/G G

3.  
G

Detailed description: This block contains the musical notation for measures 30 through 34. The staff is in treble clef with a key signature of one sharp (F#). Measure 30 has a slur over the first two notes. Measure 31 has a slur over the last two notes. Measure 32 has a whole note. Measure 33 has a whole note. Measure 34 has a whole note. The lyrics are written below the staff, with long lines for vocal extensions in measures 30, 32, and 34. Above the staff, there are three measures of guitar chords: G, G/D, and D7. Above the staff, there are three measures of guitar chords: G, C/G, and G. Above the staff, there are three measures of guitar chords: G, C/G, and G. Above the staff, there are three measures of guitar chords: G, C/G, and G.