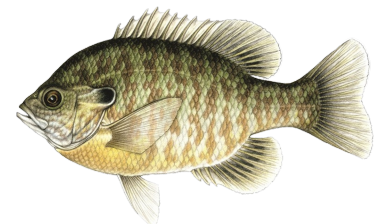
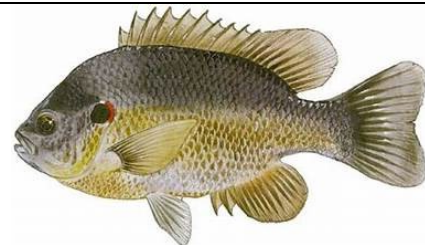

Bluegill: A common species found in all types of water. These bait fish move in groups of 20 to 30. They feed on smaller fish, crayfish, insects, etc. Primarily used for feeding bass in ponds. Average length of 8 to 10 inches.



Hybrid Bluegill: These sunfish are a mix of bluegill and many other sunfish species (usually green sunfish). They are usually a more aggressive option compared to normal bluegill. Their average length is 6 to 12 inches.



Redear Sunfish: Common species found in all types of water. Primarily eats snails, but will also eat insects and crayfish. Very noticeable red-orange mark on gill flap. Can help limit aquatic parasites. Average length is 8 to 10 inches.



Black Crappie: Due to fast repopulation and being a predator fish these are NOT recommended for small ponds. 25 acres or more is recommended for black crappie. Average length is 9 to 10 inches.



Largemouth Bass: This is a very well-known game fish all around the US. These predators feed on many other species of fish such as bluegill and fathead minnows. They have an average length of 10 to 20 inches.



Channel Catfish: Have a wide diet range being an omnivore. Young and eggs get eaten quickly. Has multiple barbells (whiskers) around the mouth. The Average length is 12 to 32 inches. Like running water and tight spaces to hide.



Triploid Grass Carp: These fish are not able to reproduce. They are mainly used in weed/algae management to help prevent excessive growth. It is required to fill out a permit to buy this species. Average length of 12 to 24 inches.



Fathead Minnow: Great for stocking in new ponds to give a jumpstart for largemouth bass. About 10 lbs of these minnows will add 1 lb of weight to 1 bass. Average size is roughly 2 to 3 inches.

