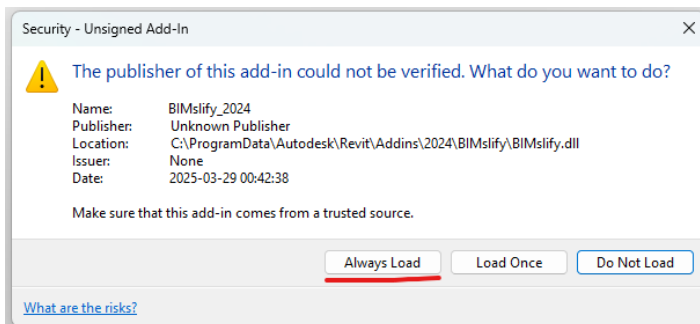
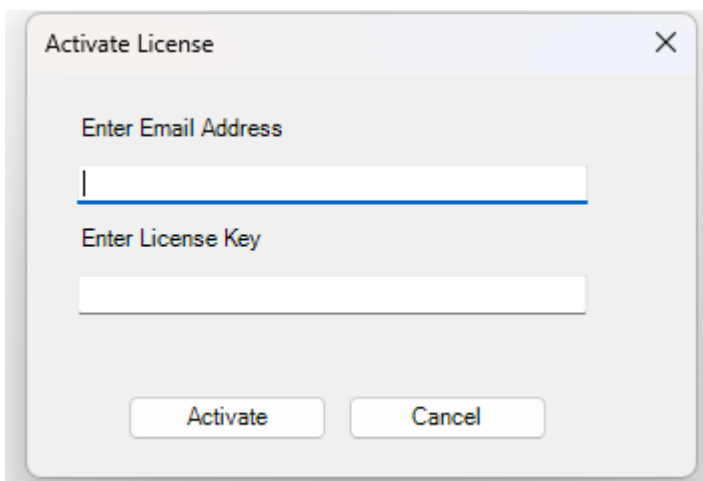


BIMslify – Setup

1. Install BIMslify.exe (make sure Revit is closed)
2. Installation needs to stay in the default install location which is normally the year release. **C:\ProgramData\Autodesk\Revit\Addins\20XX\BIMslify**
3. Once installed, Restart Revit. A warning box will appear. Press “Always Load”.



4. A new menu should now appear called BIMslify.
5. Activate the software by pressing any button in the Worksets or Views Tab.
6. A valid registration email address and license key are required to use the software. We provide a 30 day free trial for individual users to evaluate the software. Once your free trial has ended a valid subscription will be required to continue using the software which can be purchased via the website.



BIMslify – Interface Overview

The user interface is broken down into two tabs. We have the Worksets tab and the Views tab.

BIMslify Worksets Features:

- Create predefined or custom Worksets to suit your client requirements.
- Turn Worksets on or off quickly and easily using BIMslify's UI or keyboard shortcuts.
- Toggle up to 8 predefined worksets (Architectural, Structural, Mechanical, Civil, Electrical, Fire, Hydraulic & Ancillary).
- Easily add or remove custom Worksets names needed for toggle functionality.
- Coordinate with other disciplines via worksets more efficiently.

Works on any Revit object that can have a workset applied which can be Linked models, Linked AutoCAD files & or Host model elements)

The user interface is broken down into two tabs, the Worksets tab and the Views tab.



Worksets Tab: Buttons to Create Worksets and the on/off toggles for each predefined discipline. (Architectural, Structural, Mechanical, Civil, Electrical, Fire, Hydraulic & Ancillary).

Views Tab: Buttons to Duplicate and rename Multiple Views.

Worksets Tab Buttons;

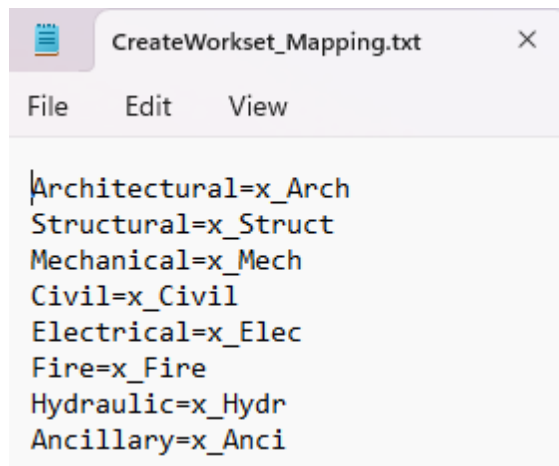
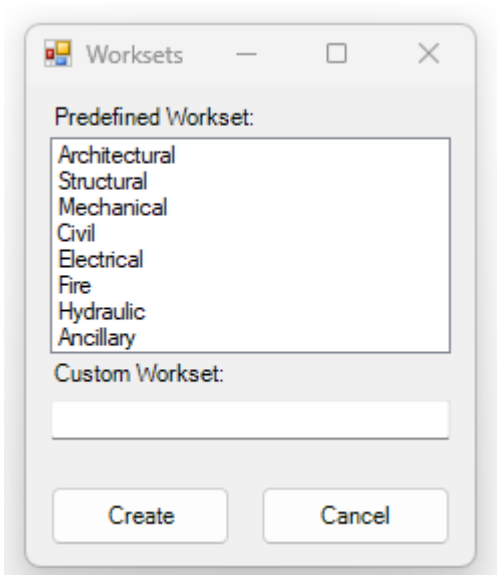
Create Button



This button helps you easily create the predefined worksets as per your office standards to work seamlessly with the Workset on/off Toggles.

Just select a workset discipline and select the create button and the workset will be created.

A custom workset name can also be created if needed. This Marco just creates the workset only, for all other workset functionality please using Revit's native workset command.



How to change the default workset mapping file? (Revit can remain open while editing)

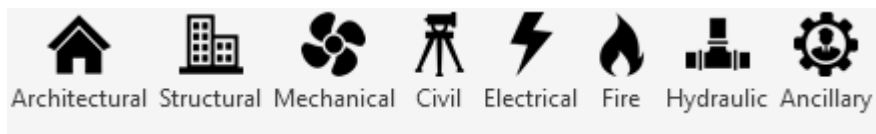
BIMslyfy comes with default workset names but these can easily be changed to match your company standards.

To change the mapping workset names locate the .txt file in the following directory
C:\ProgramData\Autodesk\Revit\Addins\20XX\BIMslyfy called *CreateWorkset_Mapping.txt*

The mapping file should look like the above right image.

Please change any text to the **right of the equals sign** on each line to your custom workset name for each discipline. Once this file has been modified save it and test the Marco again. Your custom worksets should now be created when you select a discipline.

Toggle Worksets Buttons



How to set what workset names the Toggles are looking for?

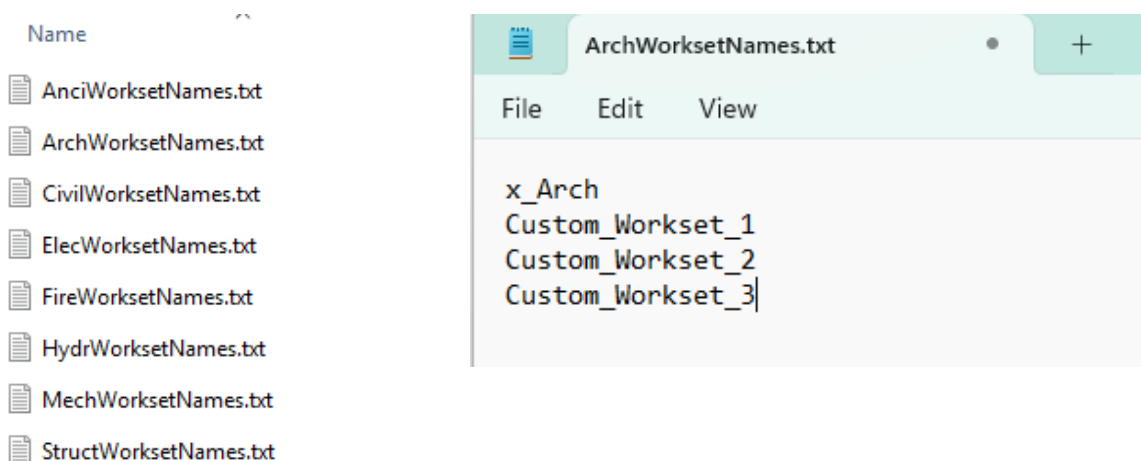
(Revit can remain open while editing these files)

Locate the .txt files in the following directory. There should be one .txt file for all eight disciplines.

These files are where you place the custom workset names that you would like to turn on or off for each discipline. There is no limit to how many names can be added to each file.

One workset should be placed on a separate line and is case sensitive with NO spaces.

C:\ProgramData\Autodesk\Revit\Addins\20XX\BIMslify

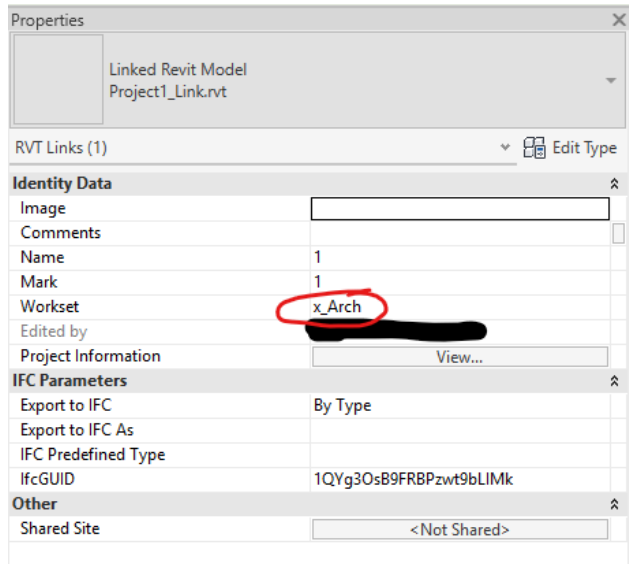


1. Modify the above text files to your desired workset names and save the files.
2. Set your Linked Revit Model, Linked CAD file or model elements to the desired Workset. (see below if you are unsure of how to do this.)
3. Worksets Toggles should turn on or off the desired workset that has been set.

How do I assign a linked Revit file, Element or CAD file to a workset?

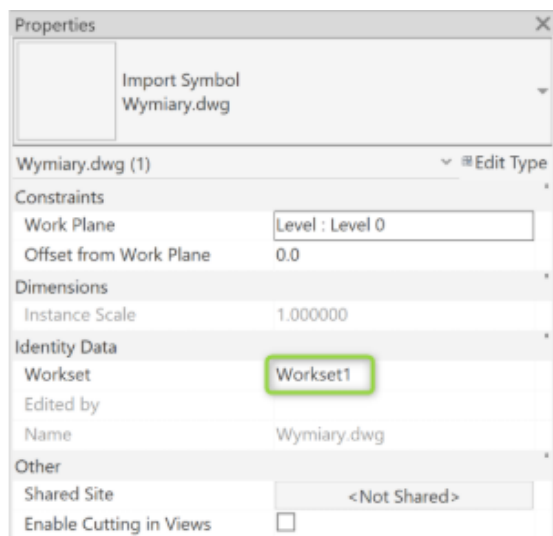
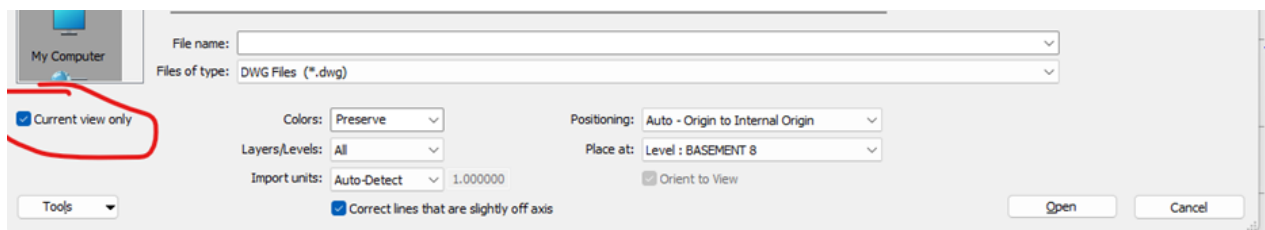
Linked Revit File

1. Selecting the linked model and setting the workset in the project browser.



Linked CAD File

1. When linking/importing a CAD file don't activate the option 'Current view only'. You should now be able to set a workset for the CAD file.



How to setup keyboard Shortcuts for Toggles?

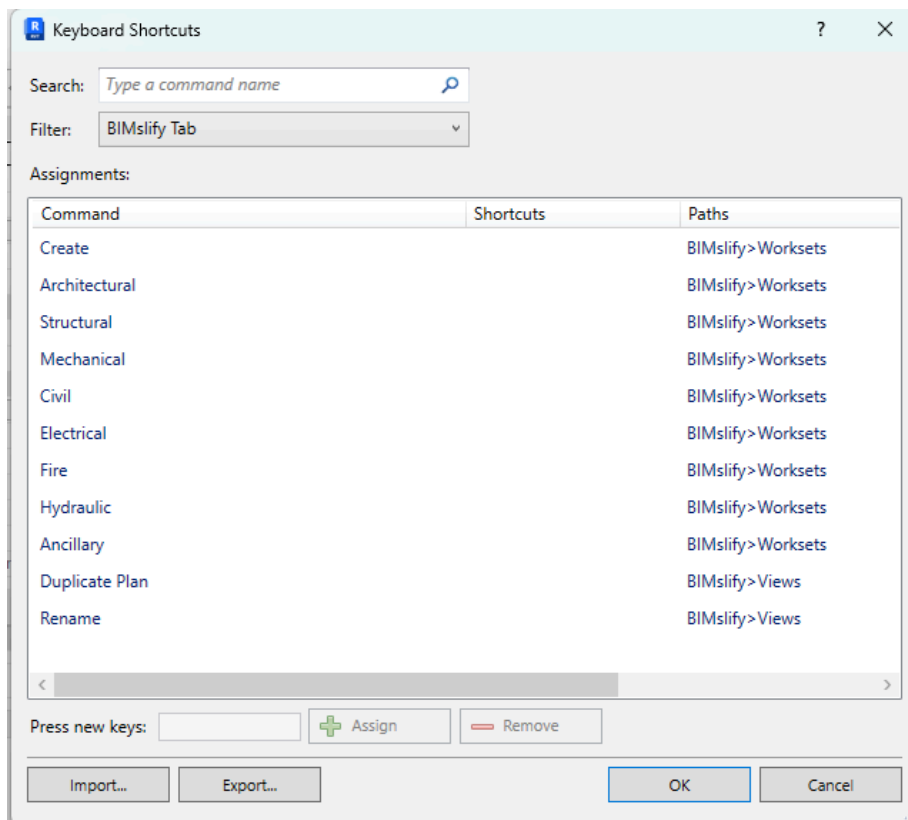
Each discipline has a button assigned so you can easily Toggle the desired Worksets on or off via the UI or via a keyboard shortcut.

Keyboard shortcuts can be set in Revit as follows;

Go to File>Options>User Interface>Keyboard Shortcuts - Customize Button

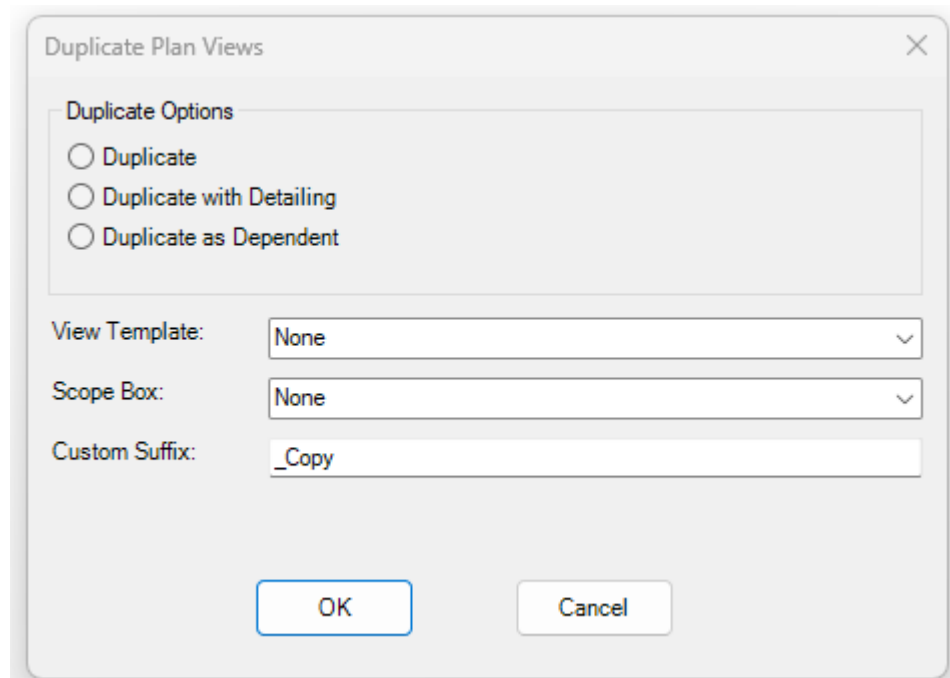
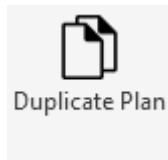
Select a command and assign Keys. Press ok. Your shortcut should now be assigned.

Tip: Assigning a keyboard shortcut makes toggling the worksets quick and easy.



View Tab Buttons;

Duplicate Plan Button



This button duplicates 1 or more plan view:

Selects plan views in the Project Browser.

Select a duplication method;

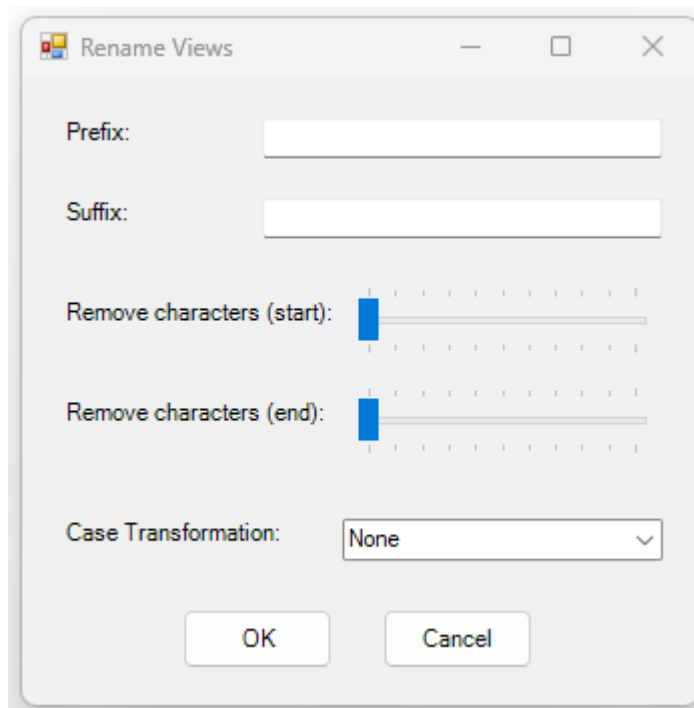
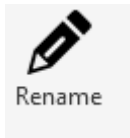
- **Duplicate** (basic copy)
- **With Detailing** (copies annotation/detail elements)
- **As Dependent** (links changes to the original view)

View Template Selection: Select a view template from the project. Defaults to "None" which will copy the original plan view template.

Scope Box Selection: Assigns a scope box to the new views. Defaults to "None" which will copy the original plan view scope box settings.

Custom Suffix Input: Auto-appends a suffix (_Copy, _Custom, etc.) to new view names.

Rename Button



This button renames 1 or more view:

1. Selects plan views in the Project Browser.
2. Select 1 or more option to change from below;
 - Prefix - Add text to beginning of view.
 - Suffix - Adds text to end of view.
 - Remove Characters (start) - Remove text from start of view.
 - Remove Characters (end) - Remove text from end of view.
 - Case Transformation - Change view text to UPPER or lower case text.