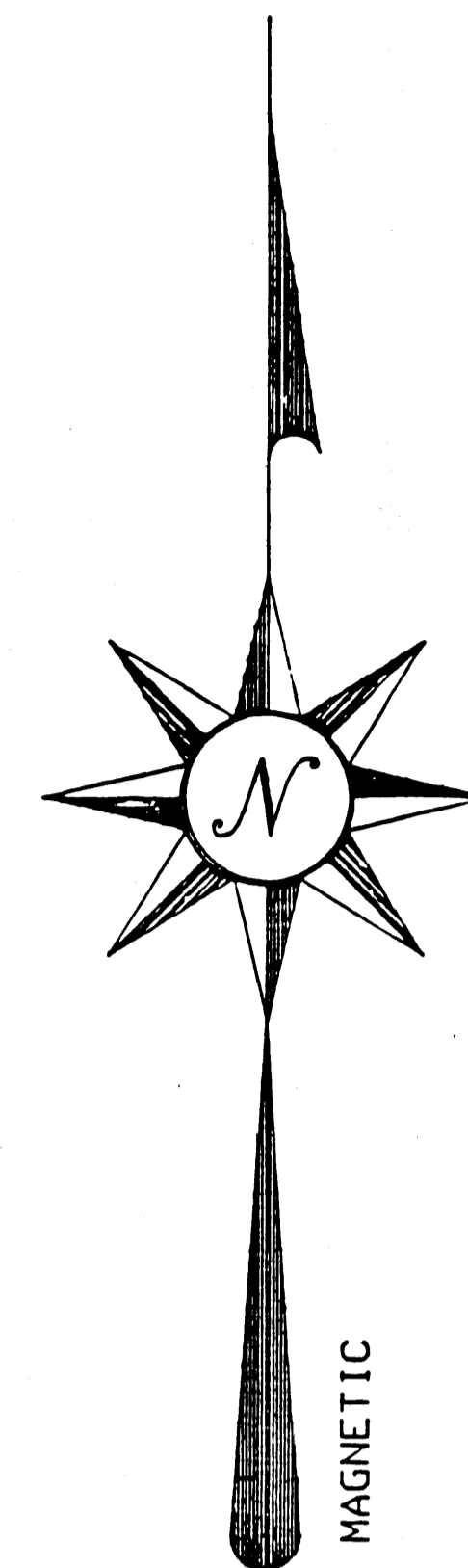


SURVEY BY  
 HASSEL T. WOLFE, R.L.S. #1343  
 740 DOLLY PARTON PARKWAY  
 SEVIERVILLE, TENNESSEE 37862  
 SCALE 1"=100'  
 SEPTEMBER 18, 1995



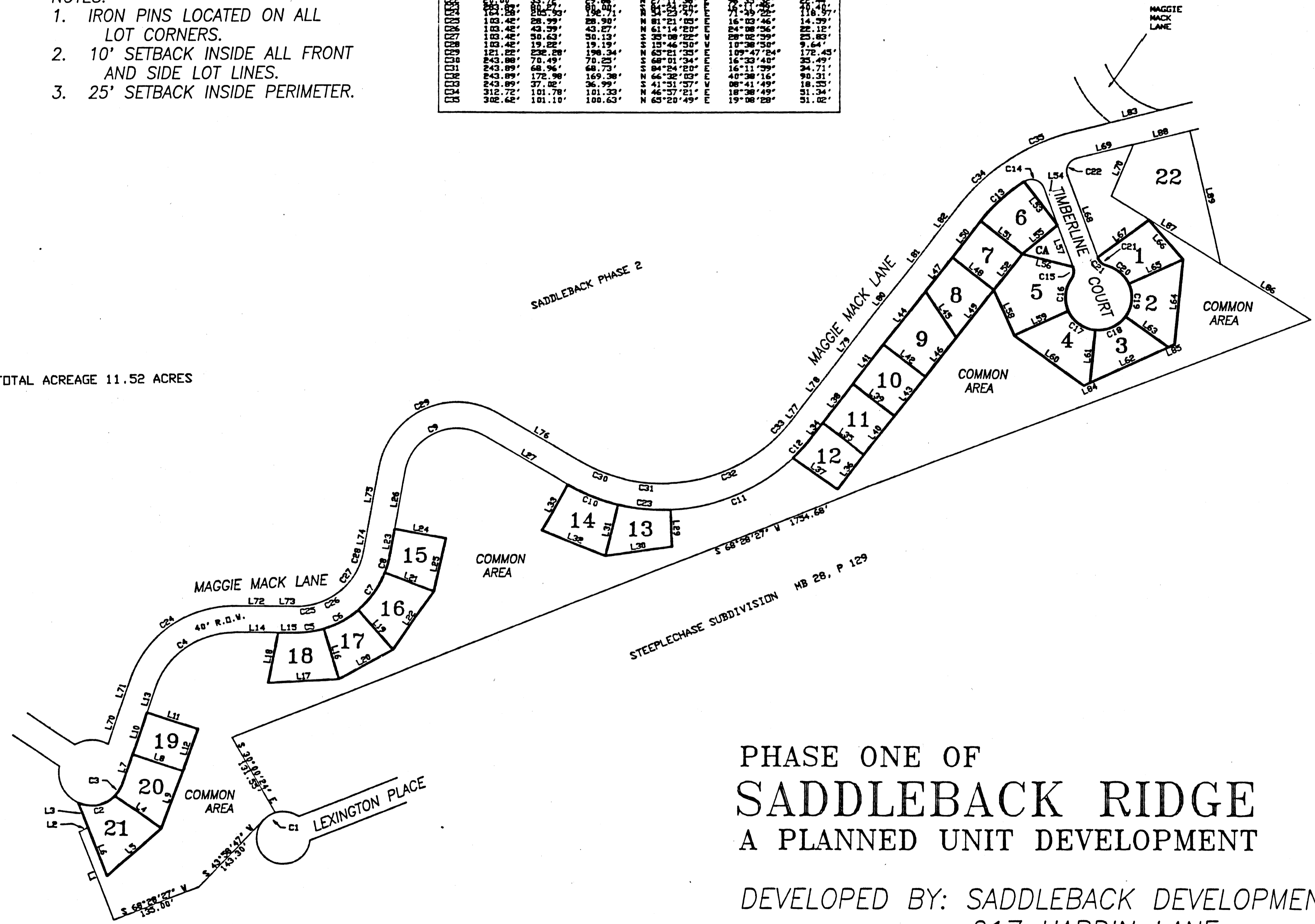
- NOTES:
1. IRON PINS LOCATED ON ALL LOT CORNERS.
  2. 10' SETBACK INSIDE ALL FRONT AND SIDE LOT LINES.
  3. 25' SETBACK INSIDE PERIMETER.

| CURVE | RADIUS  | ARC LEN. | CHORD LEN | CHORD BEARING   | DELTA ANGLE | TAN DIS |
|-------|---------|----------|-----------|-----------------|-------------|---------|
| 001   | 48.00'  | 89.01'   | 19.88'    | N 89° 01' 00" W | 28° 12' 37" | 10.00'  |
| 002   | 50.00'  | 91.42'   | 20.42'    | N 89° 01' 00" W | 28° 12' 37" | 10.00'  |
| 003   | 50.00'  | 91.42'   | 20.42'    | N 89° 01' 00" W | 28° 12' 37" | 10.00'  |
| 004   | 124.00' | 40.31'   | 14.57'    | N 89° 01' 00" W | 28° 12' 37" | 10.00'  |
| 005   | 143.42' | 60.45'   | 21.38'    | N 89° 01' 00" W | 28° 12' 37" | 10.00'  |
| 006   | 143.42' | 60.45'   | 21.38'    | N 89° 01' 00" W | 28° 12' 37" | 10.00'  |
| 007   | 143.42' | 60.45'   | 21.38'    | N 89° 01' 00" W | 28° 12' 37" | 10.00'  |
| 008   | 81.22'  | 153.63'  | 37.41'    | N 89° 01' 00" W | 28° 12' 37" | 10.00'  |
| 009   | 81.22'  | 153.63'  | 37.41'    | N 89° 01' 00" W | 28° 12' 37" | 10.00'  |
| 010   | 283.89' | 504.03'  | 132.89'   | N 89° 01' 00" W | 28° 12' 37" | 10.00'  |
| 011   | 283.89' | 504.03'  | 132.89'   | N 89° 01' 00" W | 28° 12' 37" | 10.00'  |
| 012   | 283.89' | 504.03'  | 132.89'   | N 89° 01' 00" W | 28° 12' 37" | 10.00'  |
| 013   | 283.89' | 504.03'  | 132.89'   | N 89° 01' 00" W | 28° 12' 37" | 10.00'  |
| 014   | 283.89' | 504.03'  | 132.89'   | N 89° 01' 00" W | 28° 12' 37" | 10.00'  |
| 015   | 283.89' | 504.03'  | 132.89'   | N 89° 01' 00" W | 28° 12' 37" | 10.00'  |
| 016   | 283.89' | 504.03'  | 132.89'   | N 89° 01' 00" W | 28° 12' 37" | 10.00'  |
| 017   | 283.89' | 504.03'  | 132.89'   | N 89° 01' 00" W | 28° 12' 37" | 10.00'  |
| 018   | 283.89' | 504.03'  | 132.89'   | N 89° 01' 00" W | 28° 12' 37" | 10.00'  |
| 019   | 283.89' | 504.03'  | 132.89'   | N 89° 01' 00" W | 28° 12' 37" | 10.00'  |
| 020   | 283.89' | 504.03'  | 132.89'   | N 89° 01' 00" W | 28° 12' 37" | 10.00'  |
| 021   | 283.89' | 504.03'  | 132.89'   | N 89° 01' 00" W | 28° 12' 37" | 10.00'  |
| 022   | 283.89' | 504.03'  | 132.89'   | N 89° 01' 00" W | 28° 12' 37" | 10.00'  |
| 023   | 283.89' | 504.03'  | 132.89'   | N 89° 01' 00" W | 28° 12' 37" | 10.00'  |
| 024   | 283.89' | 504.03'  | 132.89'   | N 89° 01' 00" W | 28° 12' 37" | 10.00'  |
| 025   | 283.89' | 504.03'  | 132.89'   | N 89° 01' 00" W | 28° 12' 37" | 10.00'  |
| 026   | 283.89' | 504.03'  | 132.89'   | N 89° 01' 00" W | 28° 12' 37" | 10.00'  |
| 027   | 283.89' | 504.03'  | 132.89'   | N 89° 01' 00" W | 28° 12' 37" | 10.00'  |
| 028   | 283.89' | 504.03'  | 132.89'   | N 89° 01' 00" W | 28° 12' 37" | 10.00'  |
| 029   | 283.89' | 504.03'  | 132.89'   | N 89° 01' 00" W | 28° 12' 37" | 10.00'  |
| 030   | 283.89' | 504.03'  | 132.89'   | N 89° 01' 00" W | 28° 12' 37" | 10.00'  |
| 031   | 283.89' | 504.03'  | 132.89'   | N 89° 01' 00" W | 28° 12' 37" | 10.00'  |
| 032   | 283.89' | 504.03'  | 132.89'   | N 89° 01' 00" W | 28° 12' 37" | 10.00'  |
| 033   | 283.89' | 504.03'  | 132.89'   | N 89° 01' 00" W | 28° 12' 37" | 10.00'  |
| 034   | 283.89' | 504.03'  | 132.89'   | N 89° 01' 00" W | 28° 12' 37" | 10.00'  |
| 035   | 283.89' | 504.03'  | 132.89'   | N 89° 01' 00" W | 28° 12' 37" | 10.00'  |
| 036   | 283.89' | 504.03'  | 132.89'   | N 89° 01' 00" W | 28° 12' 37" | 10.00'  |
| 037   | 283.89' | 504.03'  | 132.89'   | N 89° 01' 00" W | 28° 12' 37" | 10.00'  |
| 038   | 283.89' | 504.03'  | 132.89'   | N 89° 01' 00" W | 28° 12' 37" | 10.00'  |
| 039   | 283.89' | 504.03'  | 132.89'   | N 89° 01' 00" W | 28° 12' 37" | 10.00'  |
| 040   | 283.89' | 504.03'  | 132.89'   | N 89° 01' 00" W | 28° 12' 37" | 10.00'  |
| 041   | 283.89' | 504.03'  | 132.89'   | N 89° 01' 00" W | 28° 12' 37" | 10.00'  |
| 042   | 283.89' | 504.03'  | 132.89'   | N 89° 01' 00" W | 28° 12' 37" | 10.00'  |
| 043   | 283.89' | 504.03'  | 132.89'   | N 89° 01' 00" W | 28° 12' 37" | 10.00'  |
| 044   | 283.89' | 504.03'  | 132.89'   | N 89° 01' 00" W | 28° 12' 37" | 10.00'  |
| 045   | 283.89' | 504.03'  | 132.89'   | N 89° 01' 00" W | 28° 12' 37" | 10.00'  |
| 046   | 283.89' | 504.03'  | 132.89'   | N 89° 01' 00" W | 28° 12' 37" | 10.00'  |
| 047   | 283.89' | 504.03'  | 132.89'   | N 89° 01' 00" W | 28° 12' 37" | 10.00'  |
| 048   | 283.89' | 504.03'  | 132.89'   | N 89° 01' 00" W | 28° 12' 37" | 10.00'  |
| 049   | 283.89' | 504.03'  | 132.89'   | N 89° 01' 00" W | 28° 12' 37" | 10.00'  |
| 050   | 283.89' | 504.03'  | 132.89'   | N 89° 01' 00" W | 28° 12' 37" | 10.00'  |
| 051   | 283.89' | 504.03'  | 132.89'   | N 89° 01' 00" W | 28° 12' 37" | 10.00'  |
| 052   | 283.89' | 504.03'  | 132.89'   | N 89° 01' 00" W | 28° 12' 37" | 10.00'  |
| 053   | 283.89' | 504.03'  | 132.89'   | N 89° 01' 00" W | 28° 12' 37" | 10.00'  |
| 054   | 283.89' | 504.03'  | 132.89'   | N 89° 01' 00" W | 28° 12' 37" | 10.00'  |
| 055   | 283.89' | 504.03'  | 132.89'   | N 89° 01' 00" W | 28° 12' 37" | 10.00'  |
| 056   | 283.89' | 504.03'  | 132.89'   | N 89° 01' 00" W | 28° 12' 37" | 10.00'  |
| 057   | 283.89' | 504.03'  | 132.89'   | N 89° 01' 00" W | 28° 12' 37" | 10.00'  |
| 058   | 283.89' | 504.03'  | 132.89'   | N 89° 01' 00" W | 28° 12' 37" | 10.00'  |
| 059   | 283.89' | 504.03'  | 132.89'   | N 89° 01' 00" W | 28° 12' 37" | 10.00'  |
| 060   | 283.89' | 504.03'  | 132.89'   | N 89° 01' 00" W | 28° 12' 37" | 10.00'  |
| 061   | 283.89' | 504.03'  | 132.89'   | N 89° 01' 00" W | 28° 12' 37" | 10.00'  |
| 062   | 283.89' | 504.03'  | 132.89'   | N 89° 01' 00" W | 28° 12' 37" | 10.00'  |
| 063   | 283.89' | 504.03'  | 132.89'   | N 89° 01' 00" W | 28° 12' 37" | 10.00'  |
| 064   | 283.89' | 504.03'  | 132.89'   | N 89° 01' 00" W | 28° 12' 37" | 10.00'  |
| 065   | 283.89' | 504.03'  | 132.89'   | N 89° 01' 00" W | 28° 12' 37" | 10.00'  |
| 066   | 283.89' | 504.03'  | 132.89'   | N 89° 01' 00" W | 28° 12' 37" | 10.00'  |
| 067   | 283.89' | 504.03'  | 132.89'   | N 89° 01' 00" W | 28° 12' 37" | 10.00'  |
| 068   | 283.89' | 504.03'  | 132.89'   | N 89° 01' 00" W | 28° 12' 37" | 10.00'  |
| 069   | 283.89' | 504.03'  | 132.89'   | N 89° 01' 00" W | 28° 12' 37" | 10.00'  |
| 070   | 283.89' | 504.03'  | 132.89'   | N 89° 01' 00" W | 28° 12' 37" | 10.00'  |
| 071   | 283.89' | 504.03'  | 132.89'   | N 89° 01' 00" W | 28° 12' 37" | 10.00'  |
| 072   | 283.89' | 504.03'  | 132.89'   | N 89° 01' 00" W | 28° 12' 37" | 10.00'  |
| 073   | 283.89' | 504.03'  | 132.89'   | N 89° 01' 00" W | 28° 12' 37" | 10.00'  |
| 074   | 283.89' | 504.03'  | 132.89'   | N 89° 01' 00" W | 28° 12' 37" | 10.00'  |
| 075   | 283.89' | 504.03'  | 132.89'   | N 89° 01' 00" W | 28° 12' 37" | 10.00'  |
| 076   | 283.89' | 504.03'  | 132.89'   | N 89° 01' 00" W | 28° 12' 37" | 10.00'  |
| 077   | 283.89' | 504.03'  | 132.89'   | N 89° 01' 00" W | 28° 12' 37" | 10.00'  |
| 078   | 283.89' | 504.03'  | 132.89'   | N 89° 01' 00" W | 28° 12' 37" | 10.00'  |
| 079   | 283.89' | 504.03'  | 132.89'   | N 89° 01' 00" W | 28° 12' 37" | 10.00'  |
| 080   | 283.89' | 504.03'  | 132.89'   | N 89° 01' 00" W | 28° 12' 37" | 10.00'  |
| 081   | 283.89' | 504.03'  | 132.89'   | N 89° 01' 00" W | 28° 12' 37" | 10.00'  |
| 082   | 283.89' | 504.03'  | 132.89'   | N 89° 01' 00" W | 28° 12' 37" | 10.00'  |
| 083   | 283.89' | 504.03'  | 132.89'   | N 89° 01' 00" W | 28° 12' 37" | 10.00'  |
| 084   | 283.89' | 504.03'  | 132.89'   | N 89° 01' 00" W | 28° 12' 37" | 10.00'  |
| 085   | 283.89' | 504.03'  | 132.89'   | N 89° 01' 00" W | 28° 12' 37" | 10.00'  |
| 086   | 283.89' | 504.03'  | 132.89'   | N 89° 01' 00" W | 28° 12' 37" | 10.00'  |
| 087   | 283.89' | 504.03'  | 132.89'   | N 89° 01' 00" W | 28° 12' 37" | 10.00'  |
| 088   | 283.89' | 504.03'  | 132.89'   | N 89° 01' 00" W | 28° 12' 37" | 10.00'  |
| 089   | 283.89' | 504.03'  | 132.89'   | N 89° 01' 00" W | 28° 12' 37" | 10.00'  |
| 090   | 283.89' | 504.03'  | 132.89'   | N 89° 01' 00" W | 28° 12' 37" | 10.00'  |
| 091   | 283.89' | 504.03'  | 132.89'   | N 89° 01' 00" W | 28° 12' 37" | 10.00'  |
| 092   | 283.89' | 504.03'  | 132.89'   | N 89° 01' 00" W | 28° 12' 37" | 10.00'  |
| 093   | 283.89' | 504.03'  | 132.89'   | N 89° 01' 00" W | 28° 12' 37" | 10.00'  |
| 094   | 283.89' | 504.03'  | 132.89'   | N 89° 01' 00" W | 28° 12' 37" | 10.00'  |
| 095   | 283.89' | 504.03'  | 132.89'   | N 89° 01' 00" W | 28° 12' 37" | 10.00'  |
| 096   | 283.89' | 504.03'  | 132.89'   | N 89° 01' 00" W | 28° 12' 37" | 10.00'  |
| 097   | 283.89' | 504.03'  | 132.89'   | N 89° 01' 00" W | 28° 12' 37" | 10.00'  |
| 098   | 283.89' | 504.03'  | 132.89'   | N 89° 01' 00" W | 28° 12' 37" | 10.00'  |
| 099   | 283.89' | 504.03'  | 132.89'   | N 89° 01' 00" W | 28° 12' 37" | 10.00'  |
| 100   | 283.89' | 504.03'  | 132.89'   | N 89° 01' 00" W | 28° 12' 37" | 10.00'  |

SHORTLINE TABLE

|     |         |
|-----|---------|
| L1  | 143.00' |
| L2  | 143.00' |
| L3  | 143.00' |
| L4  | 143.00' |
| L5  | 143.00' |
| L6  | 143.00' |
| L7  | 143.00' |
| L8  | 143.00' |
| L9  | 143.00' |
| L10 | 143.00' |
| L11 | 143.00' |
| L12 | 143.00' |
| L13 | 143.00' |
| L14 | 143.00' |
| L15 | 143.00' |
| L16 | 143.00' |
| L17 | 143.00' |
| L18 | 143.00' |
| L19 | 143.00' |
| L20 | 143.00' |
| L21 | 143.00' |
| L22 | 143.00' |
| L23 | 143.00' |
| L24 | 143.00' |
| L25 | 143.00' |
| L26 | 143.00' |
| L27 | 143.00' |
| L28 | 143.00' |
| L29 | 143.00' |
| L30 | 143.00' |
| L31 | 143.00' |
| L32 | 143.00' |
| L33 | 143.00' |
| L34 | 143.00' |
| L35 | 143.00' |
| L36 | 143.00' |
| L37 | 143.00' |
| L38 | 143.00' |
| L39 | 143.00' |
| L40 | 143.00' |
| L41 | 143.00' |
| L42 | 143.00' |
| L43 | 143.00' |
| L44 | 143.00' |
| L45 | 143.00' |
| L46 | 143.00' |
| L47 | 143.00' |
| L48 | 143.00' |
| L49 | 143.00' |
| L50 | 143.00' |
| L51 | 143.00' |
| L52 | 143.00' |
| L53 | 143.00' |
| L54 | 143.00' |
| L55 | 143.00' |
| L56 | 143.00' |
| L57 | 143.00' |
| L58 | 143.00' |
| L59 | 143.00' |
| L60 | 143.00' |
| L61 | 143.00' |
| L62 | 143.00' |
| L63 | 143.00' |
| L64 | 143.00' |
| L65 | 143.00' |
| L66 | 143.00' |
| L67 | 143.00' |
| L68 | 143.00' |
| L69 | 143.00' |
| L70 | 143.00' |
| L71 | 143.00' |
| L72 | 143.00' |
| L73 | 143.00' |
| L74 | 143.00' |
| L75 | 143.00' |
| L76 | 143.00' |
| L77 | 143.00' |
| L78 | 143.00' |
| L79 | 143.00' |
| L80 | 143.00' |
| L81 | 143.00' |
| L82 | 143.00' |
| L83 | 143.00' |
| L84 | 143.00' |
| L85 | 143.00' |
| L86 | 143.00' |
| L87 | 143.00' |
| L88 | 143.00' |
| L89 | 143.00' |
| L90 | 143.00' |

TOTAL ACREAGE 11.52 ACRES



PHASE ONE OF  
**SADDLEBACK RIDGE**  
 A PLANNED UNIT DEVELOPMENT

DEVELOPED BY: SADDLEBACK DEVELOPMENT COMPANY  
 217 HARDIN LANE  
 SEVIERVILLE, TENNESSEE

PROPERTY OF  
 JOHN WEBB, JR.  
 W.D. BOOK 536, PAGE 231  
 5TH CIVIL DISTRICT  
 SEVIER COUNTY, TENNESSEE

CERTIFICATE OF APPROVAL FOR RECORDING  
 I hereby certify that the subdivision plat shown hereon has been found to comply with the Subdivision Standards for Sevierville, Tennessee, with the exception of such variances, if any, as noted in the minutes of the Planning Commission and it has been approved for recording in the Office of the County Register.  
 [Signature]  
 3-7-96  
 SECRETARY, PLANNING COMMISSION

CERTIFICATION OF THE APPROVAL OF STREETS AND UTILITIES  
 I HEREBY CERTIFY: (1) THAT STREETS, UTILITIES AND... HAVE BEEN INSTALLED IN AN ACCEPTABLE MANNER AND ACCORDING TO SPECIFICATIONS. OR (2) THAT A SURVEY BOND IN THE AMOUNT OF \$... HAS BEEN POSTED WITH THE PLANNING COMMISSION TO ASSURE COMPLETION OF ALL REQUIRED IMPROVEMENTS IN CASE OF DEFAULT.  
 DATE: \_\_\_\_\_, 19\_\_\_\_  
 CITY ENGINEER

I HEREBY CERTIFY THAT THIS SURVEY WAS MADE USING THE LATEST RECORDED DEED AND THAT THERE ARE NO ENCROACHMENTS OR PROJECTIONS OTHER THAN THOSE SHOWN AND THAT THIS SURVEY IS CORRECT TO THE BEST OF MY KNOWLEDGE AND BELIEF.

I HEREBY CERTIFY THAT THIS IS A CATEGORY II SURVEY AND THE RATIO OF PRECISION OF THE UNADJUSTED SURVEY IS 1 : 7500 OR BETTER AS SHOWN HEREON.

THIS IS TO CERTIFY THAT I HAVE CONSULTED THE FEDERAL INSURANCE ADMINISTRATION FLOOD HAZARD BOUNDARY MAP