

DOXI VALVES

A MEMBER OF  XUANDA GROUP



Ball Check Sight Glass Valve

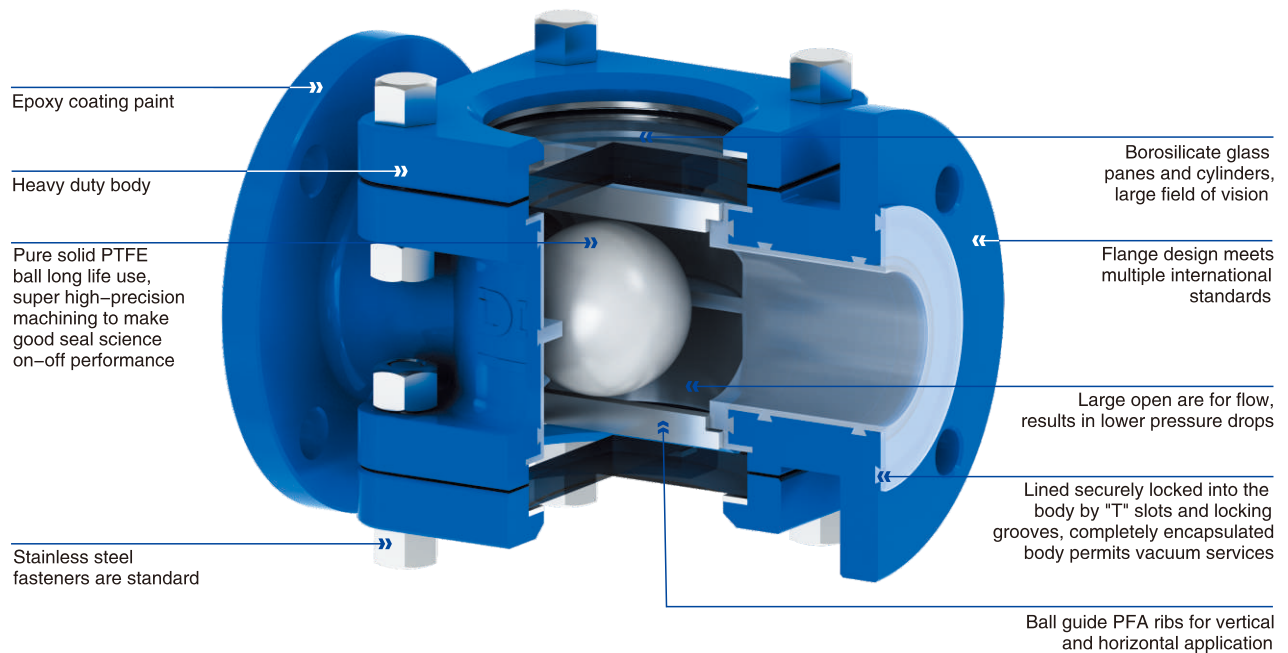
Lined ball check sight glass valve

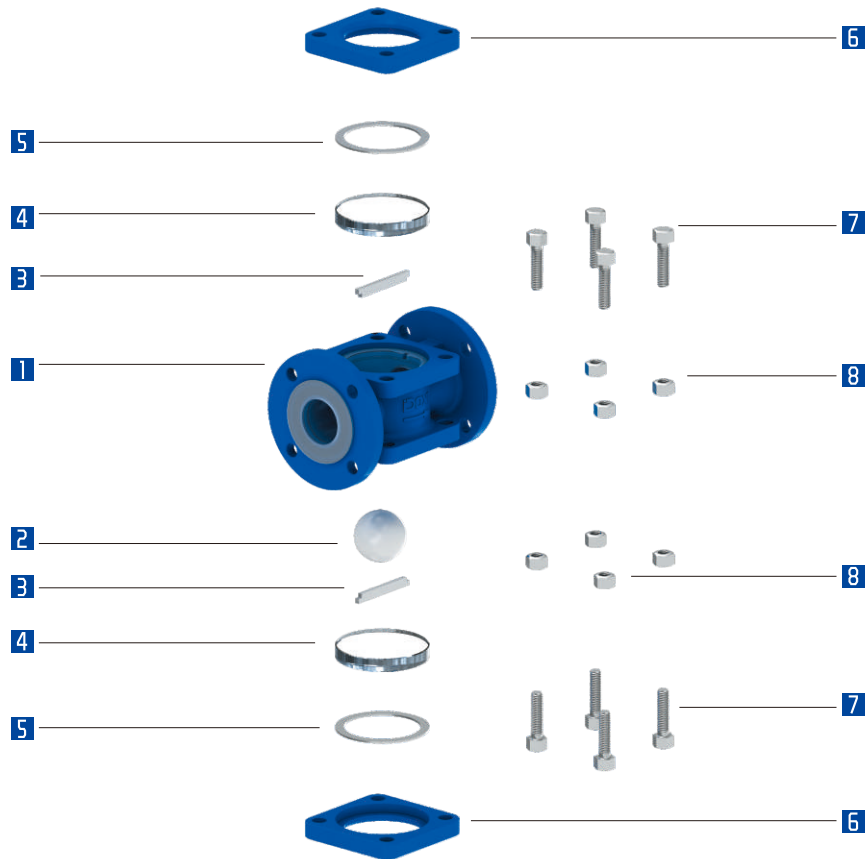


Size	15mm~200mm (0.5"~8")
Working pressure	0.1mbar~16 bar
Temperature range	-20° C ~ 200° C according to working conditions, other temperatures on request.
Design and Manufacture	API 594
Face to Face	ASME B16.10 DIN 3202 JIS B2002
Flange Ends	ASME B16.5 DIN 2532 JIS B2212
Visual Inspection	MSS Sp54
Testing	API 598 DIN 12569 JIS B2003
Pressure & Temperature	ASME B16.34
Spark testing	14kv

Lined ball check sight glass valve

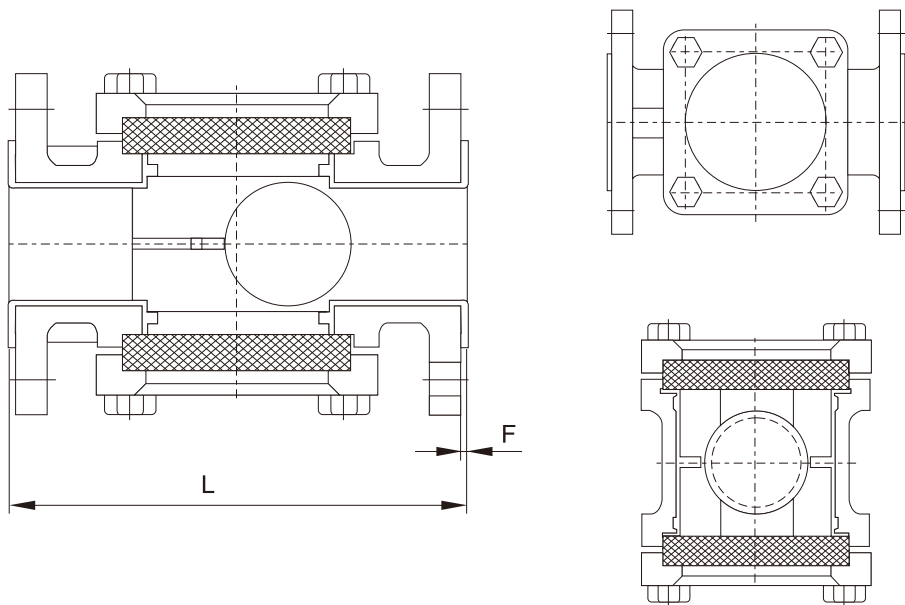
With pressure rating up to 19 bargs, the DOXI ball check valves sight glass are very robust, having integrated borosilicate windows each side of the ball check assembly makes it very easy to see if there is flow through the valve. No wetted metal parts are used. The valves are immune to most aggressive chemicals and are used in place of expensive exotic alloys.





MATERIALS SELECTION

No	Name	Qty	Materials	Materials According to Norms		
				ASTM	JIS	DIN
1	BODY	1	Carbon Steel+PFA/FEP/ETFE	A216-WCB	G5151 SCPH2	GS-45(1.0446)
			Stainless Steel+PFA/FEP/ETFE	A351-CF8	G5121 SCS13A	G-X6CrNiMo1810
			Ductile Iron+PFA/FEP/ETFE	ASTM A395	FCD400	GGG-40 (0.7040)
2	BALL	1	PTFE	-	-	-
3	BARRIER STRIP	2	PTFE/PFA/FEP/ETFE	-	-	-
4	TEMPERED SIGHT GLASS	2	Tempered Borosilicate Glass	-	-	-
5	ENVELOPE GASKET	2	PTFE	-	-	-
6	LENS FRAME	2	Carbon Steel+PFA/FEP/ETFE	A216-WCB	G5151 SCPH2	GS-45(1.0446)
			Stainless Steel+PFA/FEP/ETFE	A351-CF8	G5121 SCS13A	G-X6CrNiMo1810
			Ductile Iron+PFA/FEP/ETFE	ASTM A395	FCD400	GGG-40 (0.7040)
7	HEX BOLT	5	Stainless Steel	A 182 F304	G4303-SUSF304	X5CrNi18 10 DIN 17440
8	HEX NUT	5	Stainless Steel	A 182 F304	G4303-SUSF304	X5CrNi18 10 DIN 17440



DIMENSIONS <small>* Unit: mm</small>									
DN	NPS	ASME B16.5		JIS B2212 10K		DIN2532 Pn10		Weight	CV
mm	in	L	f	L	f	L	f	[kg]	
15	½	160	3	160	3	160	3	4	11
20	¾	160	3	160	3	160	3	4.5	20
25	1	160	3	160	3	160	3	5.0	32
40	1½	200	3	200	3	200	3	8.5	90
50	2	230	4	230	4	230	4	12.5	140
80	3	310	4	310	4	310	4	22.5	375
100	4	350	4	350	4	350	4	31	610
150	6	480	4	480	4	480	4	59	1450
200	8	600	4	600	4	600	4	82	2050



Xuanda Industrial Group Doxi Valve Co., Ltd
Add: Xuanda Industrial Zone, Dong'ou Subdistrict,
Yongjia County, Zhejiang, China.
Tel: +86-577-67383999
Fax: +86-577-67987060
Email: sales@doxi-valve.com
www.doxi-valve.com

Xuanda Industrial Group DOXI Valve Co., Ltd. All right reserved. The contents hereof are confidential and proprietary to DOXI. Any unauthorized reproduction or disclosure, in whole or in part, is strictly prohibited. DOXI reserves the right to change these information without notice. DOXI does not accept any liability or damages from the use of information in this catalog. DOXI is registered trademark of Xuanda Industrial Group DOXI Valve Co., Ltd.