

# Village Victor-Beaudry Neighbourhood Association

## Security Committee



### Committee members

Luc Levasseur  
Jim Chauvin  
Anne Bourbonnais  
Martin-Karl Bourbonnais  
Véronique Hallahan-Pilotte

### Summary

1. Road safety
2. Pedestrian safety
3. Safety in park and trails
4. Safety of residents

# 1. Road Safety

## Chemin d'Aylmer and Victor-Beaudry intersection

Problem: Poor visibility to make a right turn on a red light on Chemin d'Aylmer from Victor-Beaudry , caused by the shelter at the bus stop .

Consequence: In order to better see traffic, motorists must pass the stop line before committing , thus blocking the pedestrian path and part of Aylmer Road .





## Lucerne and Victor-Beaudry intersection

Problem: No priority left turn from Chemin Lucerne Est onto rue Victor-Beaudry Nord.

Consequence: During the evening rush hour, a motorist can wait for several cycles of traffic lights before being able to turn. This causes dangerous precipitous turns between passing cars and illegal overtaking to the right carriageway on Lucerne by motorists traveling on Lucerne East.



## Road section on Lucerne between Victor-Beaudry and Vanier

Problem: The traffic speed is too fast on rue Lucerne between rue Victor-Beaudry and rue Vanier :

- Lucerne direction East: 70 km / h between Victor-Beaudry and Vanier
- Lucerne direction West: 50 km / h east of Vanier (in front of the Lucerne manor) to the Vanier intersection , then 70 km / h between Vanier and Victor-Beaudry.
- The speed on Lucerne West drops to 60 km / h from Fraser Street.

## Other road safety issues

- Speeding on the part of motorists, STO buses and school transport buses in a residential area with a high concentration of children traveling on the streets.
- Excess parking of cars in the streets on both sides , especially in winter, dissolving snow removal from streets and sidewalks, making traffic in cars and on foot difficult and dangerous (vehicle bypass required, slippery roads, etc. ).
- Difficult visibility at intersections due to excess vegetation.

## 2. Pedestrian Safety

### 1. Lane between Victor-Beaudry and Arthur-Quesnel

Problem: Low light in the evening, not cleared in winter

Consequences: Difficult for walkers who must enter the lane, due to the risk of falls and other risks related to walkways with low light ( mischief).



### 2. Lane between Arthur-Quesnel East and Arthur-Quesnel West

Problem : Low light in the evening, not cleared in winter

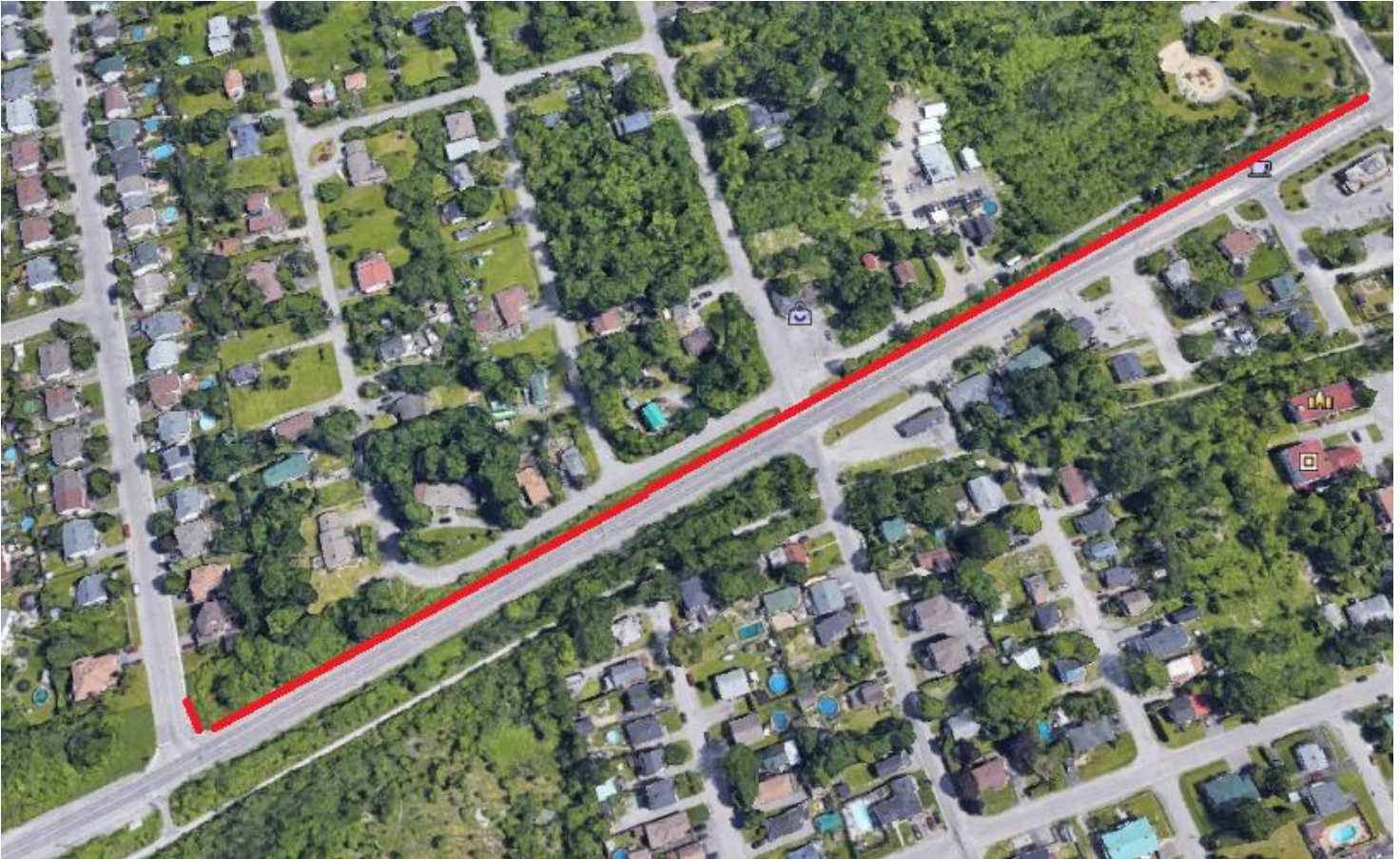
Consequences: Difficult for walkers who must enter the lane, due to the risk of falls and other risks related to walkways with low light ( mischief).



3. No pedestrian access between Victor-Beaudry and Moore street and therefore along Lucerne street to Vanier street

Problem: No safe school corridor to reach École des Rapides Deschênes for pedestrians and cyclists.

Consequences: The lack of sidewalks makes circulation difficult and dangerous for walkers (mostly children) who have to deal with the busy traffic of cars, buses and cyclists .



4. Non-existent pedestrian access joining Maple Grove and Foley streets for faster and safer access to schools and businesses.

Problem: No safe school corridor to reach South Hall School and businesses near the intersection of Fraser and Chemin d'Aylmer. The only accesses are by sidewalks along a high traffic boulevard and at a speed of 70 km / h. This problem will be further exacerbated when the new secondary school arrives.

5 . Sidewalks and pedestrian crossings on rue Victor-Beaudry and Lucerne

Problem: Southward path for cyclists and pedestrians is not aligned with the sidewalk on Victor-Beaudry and therefore the Northwest sidewalk that corner is too small to safely accommodate pedestrians and cyclists. High proportion of motorists burning the red light in both directions on Lucerne. The duration of the green light for pedestrians is too short to allow safe passage and the problem of passing motorists on the red exacerbates the issue. A pedestrian cannot enter the intersection as soon as the lights turn green. This person must first make sure that motorists stop before entering the intersection .

Consequences: High risk of accident between pedestrians, cyclists and motorists.





6 . Bus stop Lucerne North, corner Victor-Beaudry (West direction)

Problem: Lack of light, lack of shelter or bench and lack of trash can. This stop serves a large number of people and schoolchildren and is too close to the road. For example, the Lucerne / Fraser stop is safer and better adapted in a slower speed zone.



# 3. Safety in the Park and Trails

## 1. Victor-Beaudry Park

- Problems :
  - Pedestrian crossing non-existent
  - Poor visibility of speed bumps and reduced speed signage
  - Poor light on the park territory
  - No sidewalks on the park territory
  - No physical barrier ( fence , trees / shrubs ) between the territory of the park and the street in order to ensure the safety of children



## 2. Existing trails in Parc Victor-Beaudry and the surrounding forest

- Problems:
  - Unmaintained trails where there are garbage cans, glass and objects that can be dangerous.
  - Presence of dead trees that could fall on walkers.

## 4. Safety of Residents

- Problems:
  - Police presence seems rather weak in our neighborhood, neutral feeling of security
  - Non-existent neighborhood patrol
  - No parent-rescue service in our neighborhood given the high number of children who live there.



**PARENTS-SECOURS**

