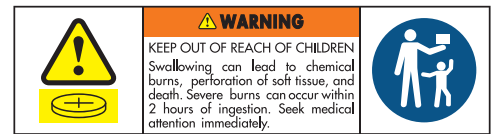


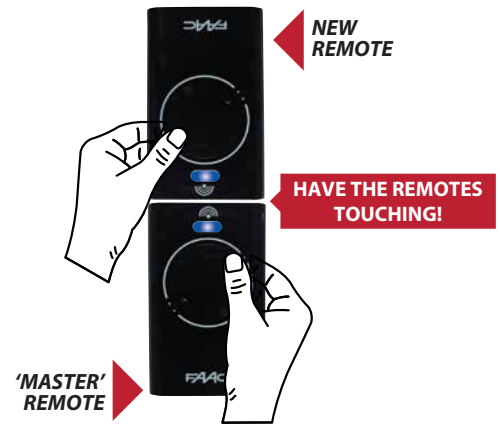
CODING (CLONING) THE SIGNAL FROM A WORKING REMOTE

1. Simultaneously press buttons P1 + P2 on the already working master remote and release them when the LED starts flashing (after about one second);

'MASTER' REMOTE
(already paired working remote)



2. Place the master and new remotes head to head so that they touch;
3. On the master remote (while its LED is flashing), press and hold down the button currently used to trigger the device (ie: P1 to P4), the LED goes on with steady (constant) light, do not let go of the button;
4. On the new remote, press the chosen button on the remote you wish to trigger the device and release it when the LED goes off after flashing twice to confirm the signal code was saved;
5. Release the button of the master remote to end the coding process;
6. Test the new remote triggers the device, if not, repeat the above procedure.
7. Repeat this procedure for every remote to be coded.



PROGRAMMING DIRECT TO THE MOTOR SEQUENCE

1. Simultaneously press buttons P1 + P2 on the master remote and release them once the LED flashes (after about one second);
2. Press and hold down the 'learning' button on the receiver, the LED must flash;
3. While the master's LED is flashing, press and hold down a channel (the remote's LED goes on with steady light);
4. Before releasing the 'learning' button on the receiver, check if the LED goes on with a steady light for a couple of seconds to confirm that the "site code" was saved;
5. Release the button on the master remote.

HOW TO IDENTIFY A MASTER/SLAVE REMOTE

MASTER - Press any button on a master remote, the LED flashes before becoming steady

SLAVE - Press any button on a slave remote, the LED goes on immediately with a steady light