

For use with Security⁺ 2.0 Garage Door Openers. The code between the the remote control and the receiver changes with each use, randomly accessing over a billion new codes. Refer to your product manual for the location of the learn button.

NOTE: Your product may look different than the products illustrated in this manual.

Single Button Remote Control
Model E940M



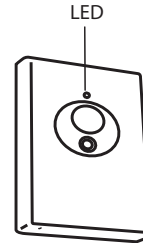
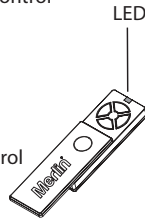
3-Button Mini Remote Control
Model E945M



3-Button Remote Control
Model E943M



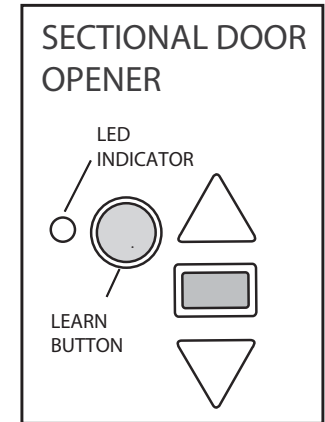
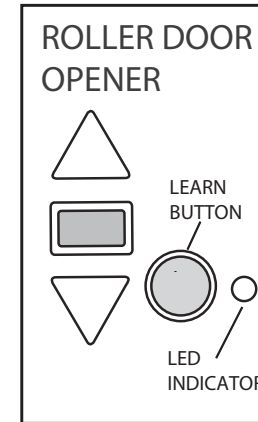
4-Button Remote Control
Model E950M



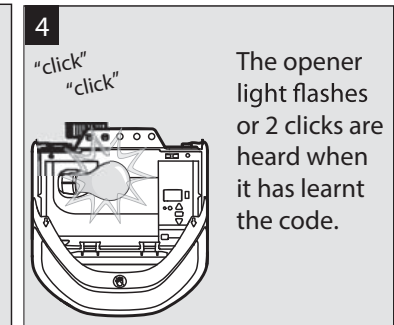
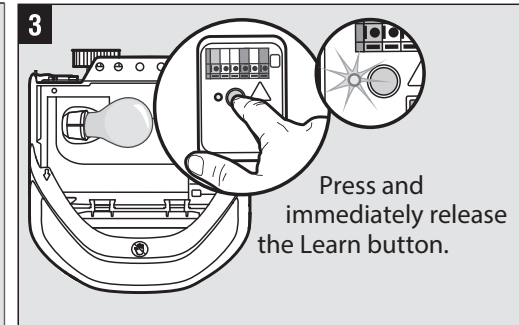
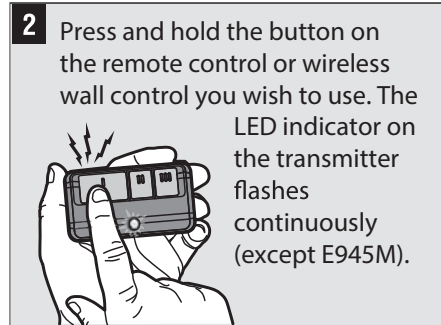
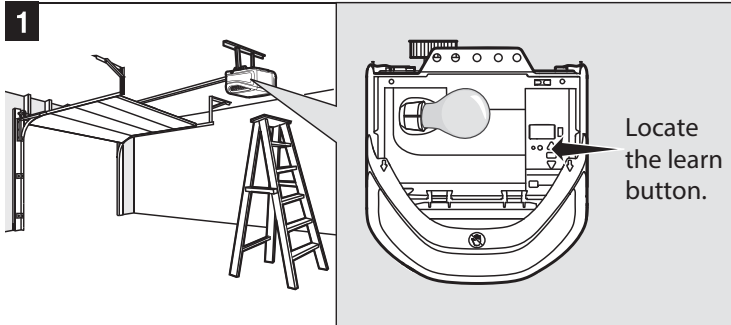
Wireless Wall Control
Model E128M



Wireless Wall Control
Model E138M



PROGRAM USING THE GARAGE DOOR



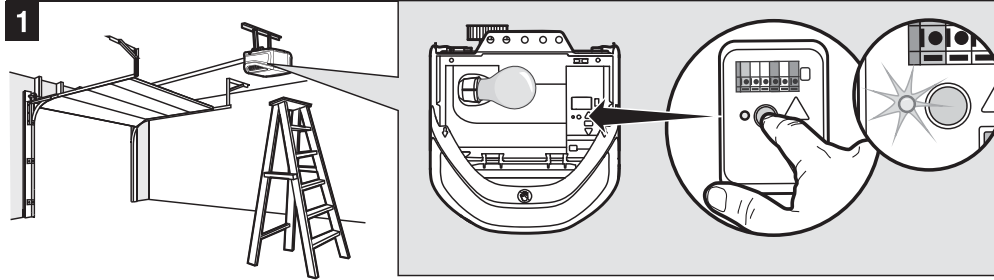
⚠ WARNING

To prevent possible SERIOUS INJURY or DEATH from a moving gate or garage door:

- ALWAYS keep remote controls out of reach of children. NEVER permit children to operate, or play with remote controls.
- Activate gate or door ONLY when it can be seen clearly, is properly adjusted, and there are no obstructions to door travel.
- ALWAYS keep gate or garage door in sight until completely closed. NEVER permit anyone to cross path of moving gate or door.

TO ERASE ALL CODES FROM MEMORY

When deactivating any unwanted remote control code, all previous codes will be erased.



Press and hold the Learn button on garage door opener until the learn LED goes out (approximately 6 seconds). All previous codes are now erased. Reprogram each remote control you wish to use.

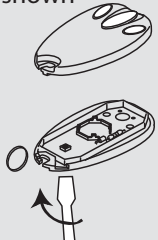
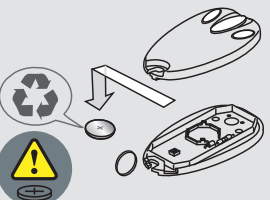
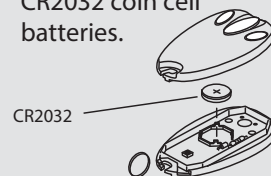
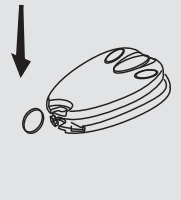
⚠ WARNING

To prevent possible **SERIOUS INJURY** or **DEATH** from a moving gate or garage door:

- ALWAYS keep remote controls out of reach of children. NEVER permit children to operate, or play with remote controls.
- Activate gate or door ONLY when it can be seen clearly, is properly adjusted, and there are no obstructions to door travel.
- ALWAYS keep gate or garage door in sight until completely closed. NEVER permit anyone to cross path of moving gate or door.

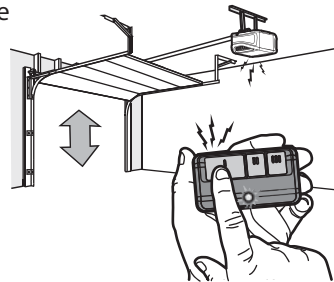
REPLACING THE BATTERY

The lithium battery should produce power for up to 5 years. If the battery is low, the remote control's LED will not flash when the button is pressed. To replace battery:

<p>1 Use a screwdriver blade to pry open the case as shown</p> 	<p>2 Remove the old battery. Dispose of old batteries properly.</p> 	<p>3 Insert replacement batteries positive side up. Replace the batteries with only CR2032 coin cell batteries.</p> 	<p>4 Replace cover.</p> 
---	--	---	--

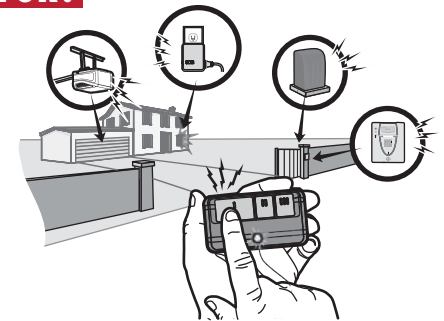
HOW TO USE THE REMOTE CONTROL

Press and hold the button down until the door or gate starts to move. The remote control will operate from up to 3 car lengths away on typical installations. Installations and conditions vary, contact an installing dealer for more information.



WHAT ARE THE ADDITIONAL BUTTONS FOR?

Additional buttons on the remote control can be programmed to operate up to 3 devices such as additional garage door openers, light controls, gate operators or access control systems.



REPLACEMENT BATTERY TYPE

CR2032 Lithium battery - CR2032



⚠ WARNING

To prevent possible SERIOUS INJURY or DEATH:

- NEVER allow small children near batteries.
- If battery is swallowed, immediately notify doctor.

To reduce risk of fire, explosion or chemical burn:

- Replace ONLY with 3V2032 coin batteries.
- DO NOT recharge, disassemble, heat above 212° F (100° C) or incinerate.

	<p>⚠ WARNING</p> <p>KEEP OUT OF REACH OF CHILDREN</p> <p>Swallowing can lead to chemical burns, perforation of soft tissue, and death. Severe burns can occur within 2 hours of ingestion. Seek medical attention immediately.</p>	
---	---	---