



I - Motoriduttore elettromeccanico per cancelli battenti

GB - The electromechanical gear motor for swing gates

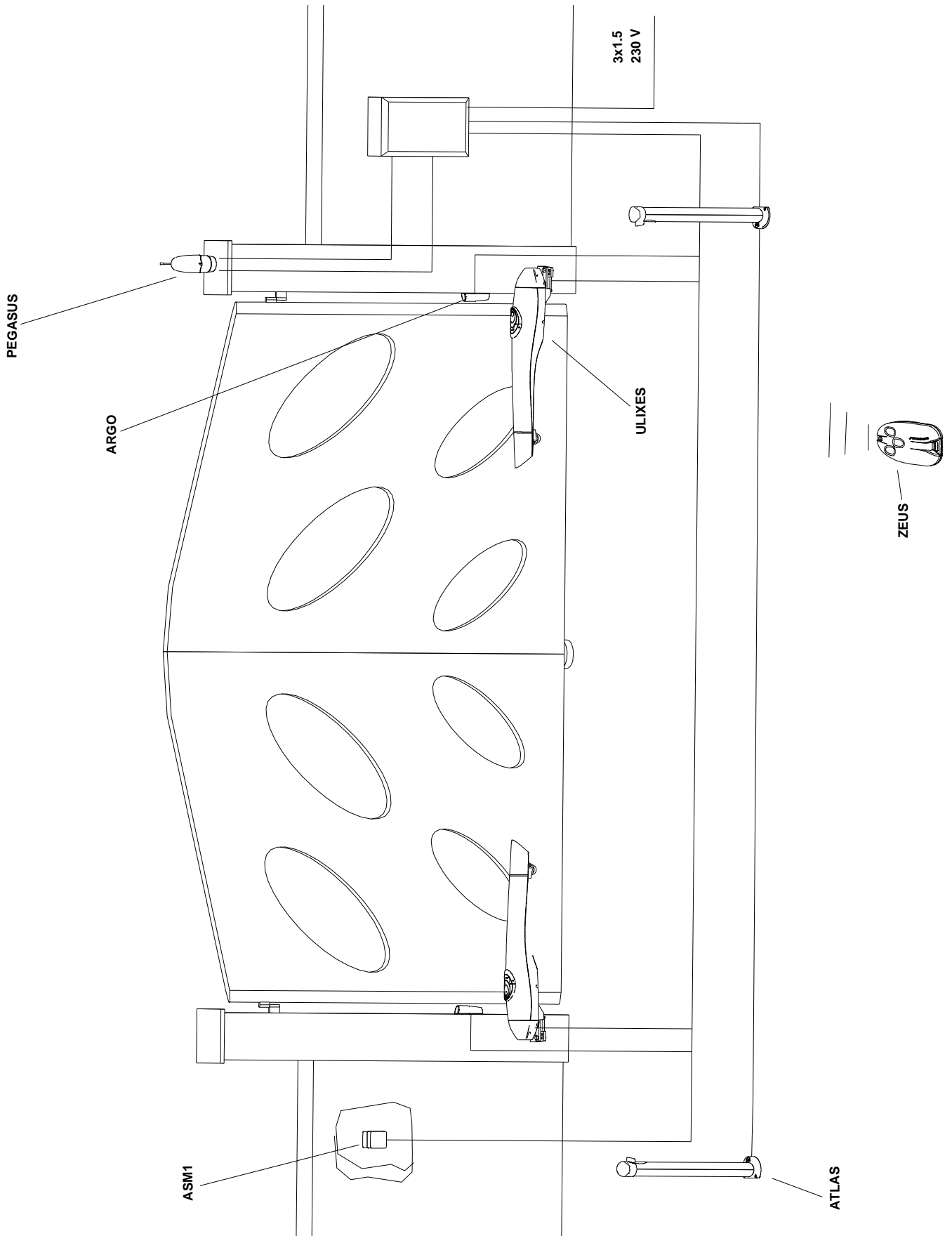
F - Motoréducteur électromécanique pour portails battants

D - Elektromechanisches Getriebe für Flügeltore

E - Motorreductor electromecánico para portones de batiente

ULIXES

CE





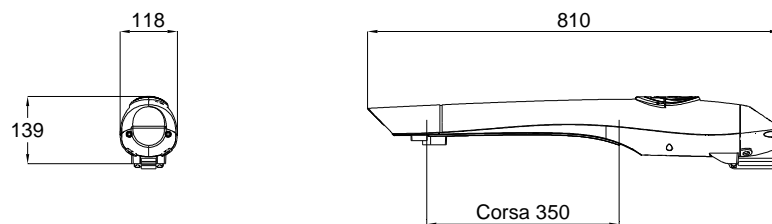
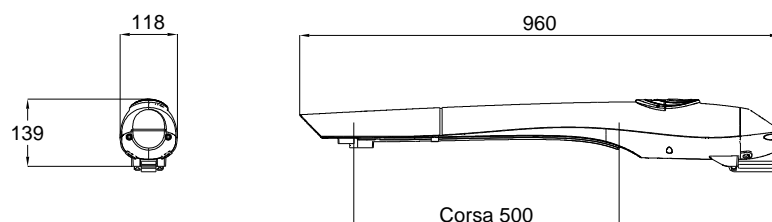
Attention!

- **This manual is for qualified installers only and not for the end user. It is the installer's job to explain to the user how the automatism works, about possible hazards related to it and the need for periodical maintenance.**
- **Installation must be carried out by qualified personnel only, in compliance with current standards concerning automatic closing mechanisms.**
- **ULIXES is made specifically to control the automation of swing gates and therefore it is forbidden to use it for any other purposes or improperly.**
- **Use original components only. Stagnoli is not liable for damages if any other components are used.**
- **Make sure that the gate structure is solid and suitable to be motorised.**
- **Make certain that when the gate is moving there are no points of friction and there is no chance of it derailing.**
- **Make absolutely certain the power is disconnected before carrying out any work on the device.**
- **Connect the power lead only to supply lines with adequate electrical protection.**
- **Be particularly careful when evaluating the safety devices to install and their location. Always install an emergency stop device that will cut power off in the case of necessity.**
- **The irreversible gearmotor avoids installing an electric lock and in case of black-out the release with personal single key allows the gate to be easily opened and closed. Nevertheless the electronic lock should be installed to assure a better closing above all by wings longer than 2.5 meters.**

Ulixes technical features

Technical data	ULIXES 230V	ULIXES 24V
Supply power	230V~ (50Hz)	230V~ (50Hz)
Max. Input current (A)	1.3	1
Motor power supply	230V~	24V <u> </u> <u> </u> <u> </u>
Max. Motor power (W)	160 W	120 W
Capacitor	10 µF	-
Working travel (mm)*	350 – 500	350 – 500
Travel time* (sec)	15 - 25	15 - 25
Rpm	1400 - 900	1100
Reduction ratio	1/24	1/24
Max. opening angle	115°	115°
Working temperature (°C)	-20 ↔ +60	-20 ↔ +60
Thermal overload protection (°C)	150	-
Work cycle	residential	intensive
IP protection level	44	44
Weight* (Kg)	9	9

Note: working travel, the length of the automation and weight depend on the ULIXES model used.

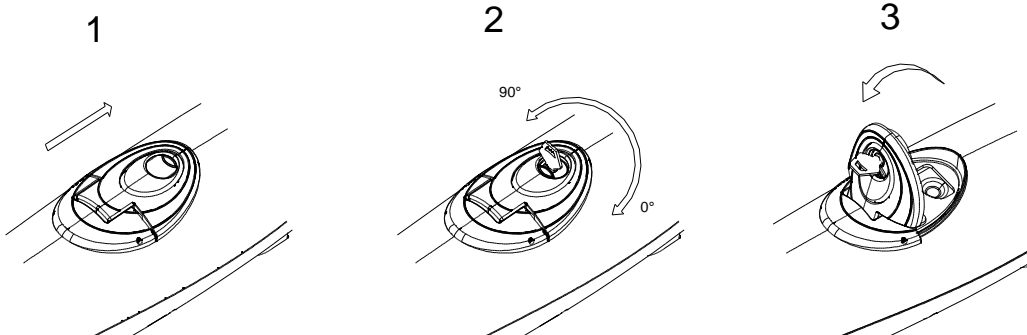
Overall dimensions**Ulixes 350****Ulixes 500**

Limits of use

LEAF	2 m	2.5 m	3 m	3.5 m	4 m	4.5 m	5 m
300 kg	ULIXES 350	ULIXES 350	ULIXES 350	ULIXES 350	ULIXES 500	ULIXES 500	ULIXES 500
400 kg	ULIXES 350	ULIXES 350	ULIXES 350	ULIXES 500	ULIXES 500		
500 kg	ULIXES 350	ULIXES 350	ULIXES 500	ULIXES 500			
600 kg	ULIXES 350	ULIXES 350	ULIXES 500				
700 kg	ULIXES 350	ULIXES 500					
800 kg	ULIXES 350	ULIXES 500					
900 kg	ULIXES 500						
1000 kg	ULIXES 500						

Releasing manually

1. Slide the lock cover forwards
2. Turn the key
3. Pull the handle until it is perpendicular to the motor

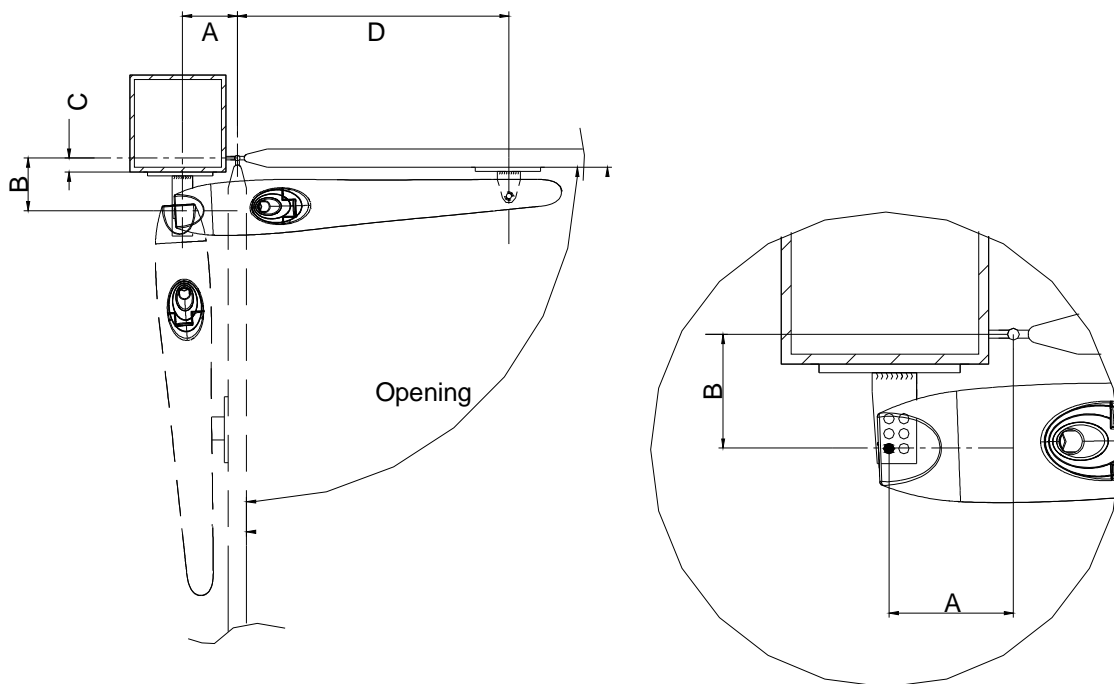


Preliminary checks

Check the following points before commencing to install Ulixes:

- Check that the gate structure is sufficiently robust and there are no points of friction.
- Check the condition of the gate hinges; make sure they are adequately lubricated.
- Check there is a mechanical stop in closing.
- Check value "C" before installing, observing the specifications in the assembly table (Tab.1, Tab. 2).

By increasing value "B" the opening angle is reduced, peripheral speed and the thrust of the motor on the gate is increased; to the contrary, by increasing "A" the opening angle is increased, peripheral speed and the thrust of the motor on the gate is reduced.



Tab. 1

	OPENING	A	B	C	D
Travel 350	90°	90	143	60	550
Travel 350	90°	90	140	40	550
Travel 350	90°	90	120	20	550
Travel 350	90°	90	100	0	550
Travel 350	115°	120	83	20	530
Travel 350	115°	120	83	0	530

Tab. 2

	OPENING	A	B	C	D
Travel 500	90°	130	143	60	600
Travel 500	90°	130	140	40	600
Travel 500	115°	150	103	20	600
Travel 500	115°	150	100	0	600

Fixing the brackets to the post and gate

After having verified the optimum conditions for placing the plates and their alignment, fix them to the post and gate permanently, either welding them or utilising expansion bolts (if the post is made of brick), observing the value specified in Fig. 2.

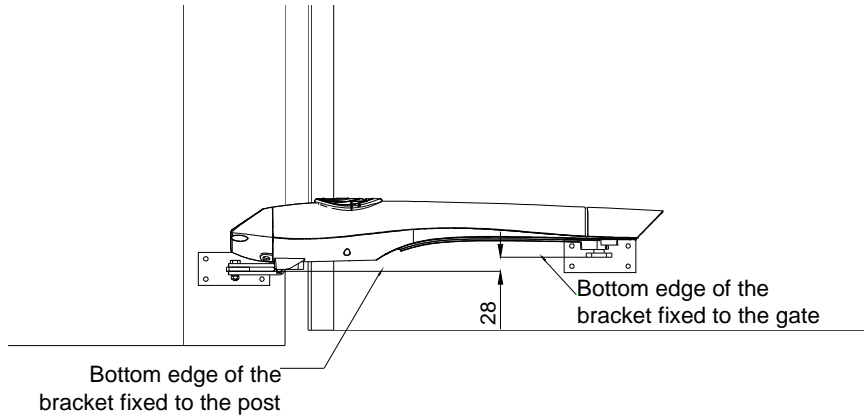
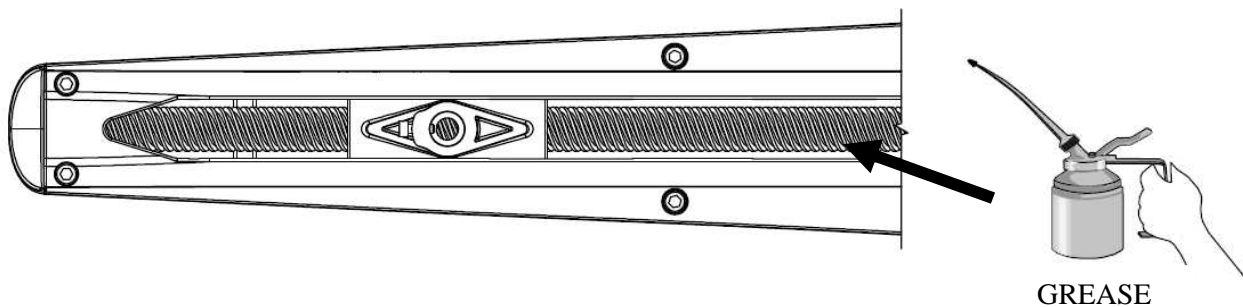


Fig.2

Fixing the gear motor

Check before installation of the engine that the worm is well greased, the same operation carried out periodically in order to ensure a correct handling of the automation during its operation.



Lock the gear motor at the back with the M8 hex head screw with nut and washer (Fig.3).
Fit the nut screw on the front bracket pin and tighten the traverse screw to lock it in the working position (Fig. 4).

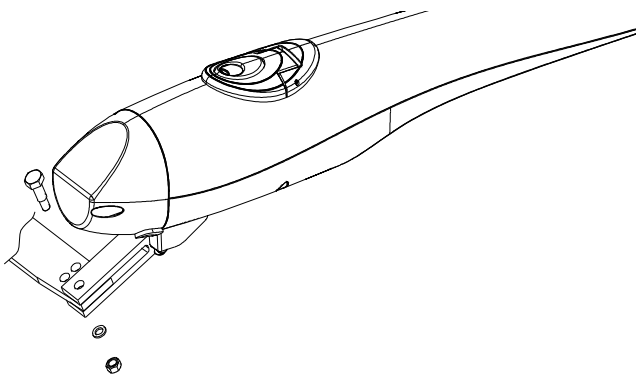


Fig.3

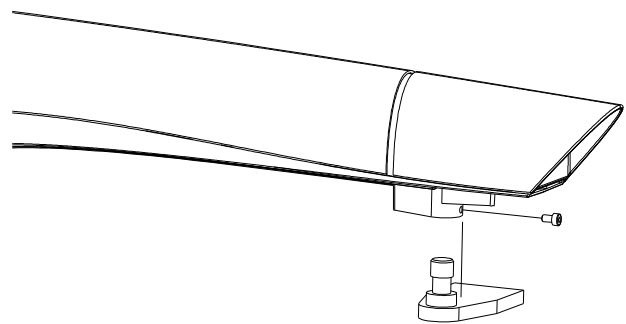


Fig.4

ULIXES 230V electrical connections : with the motor already fixed to the gate, wire as shown in Fig. 5. For more specifications please see the diagrams for connecting to the control unit.

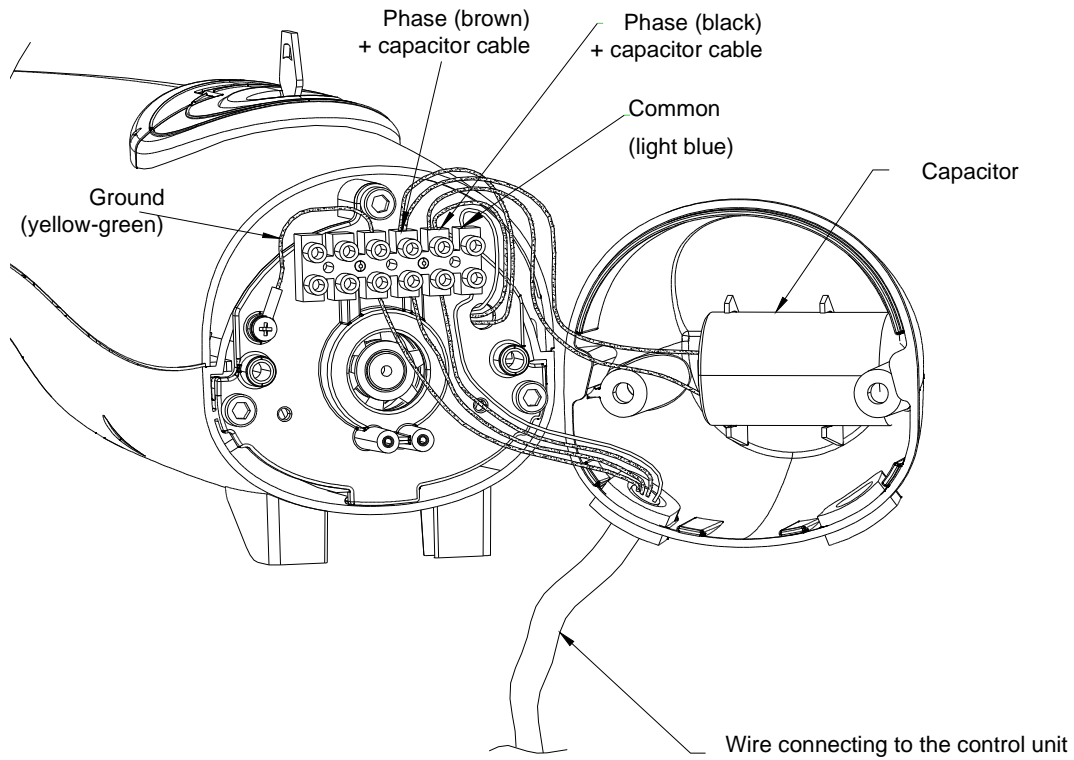


Fig.5

ULIXES 24V electrical connections : with the motor already fixed to the gate, wire as shown in Fig. 6. For more specifications please see the diagrams for connecting to the control unit

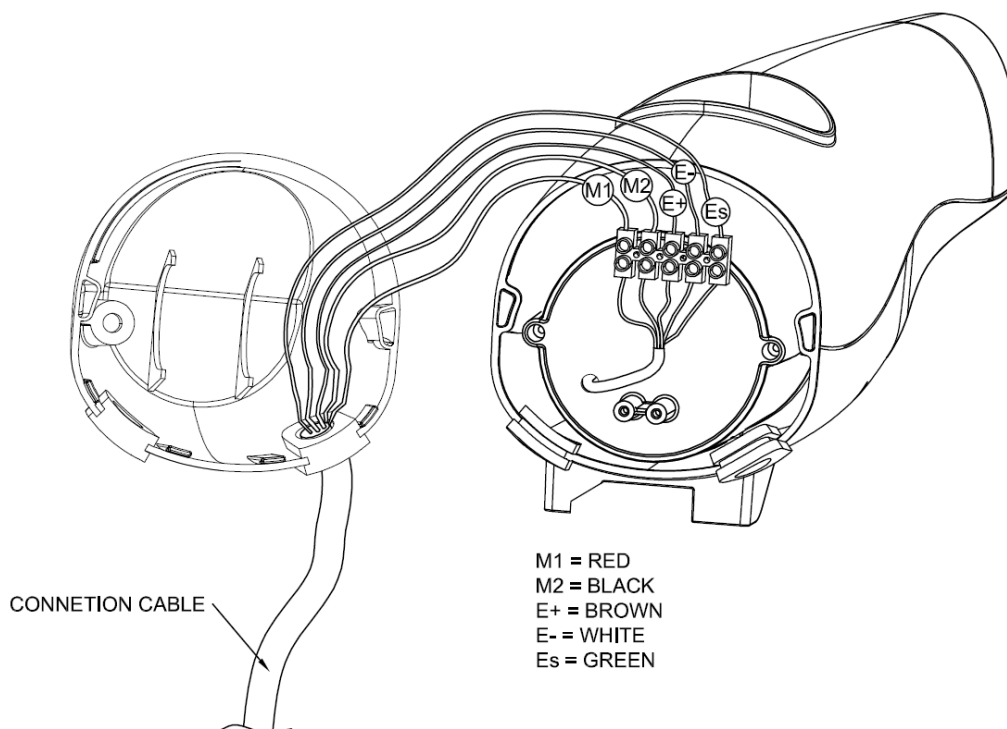
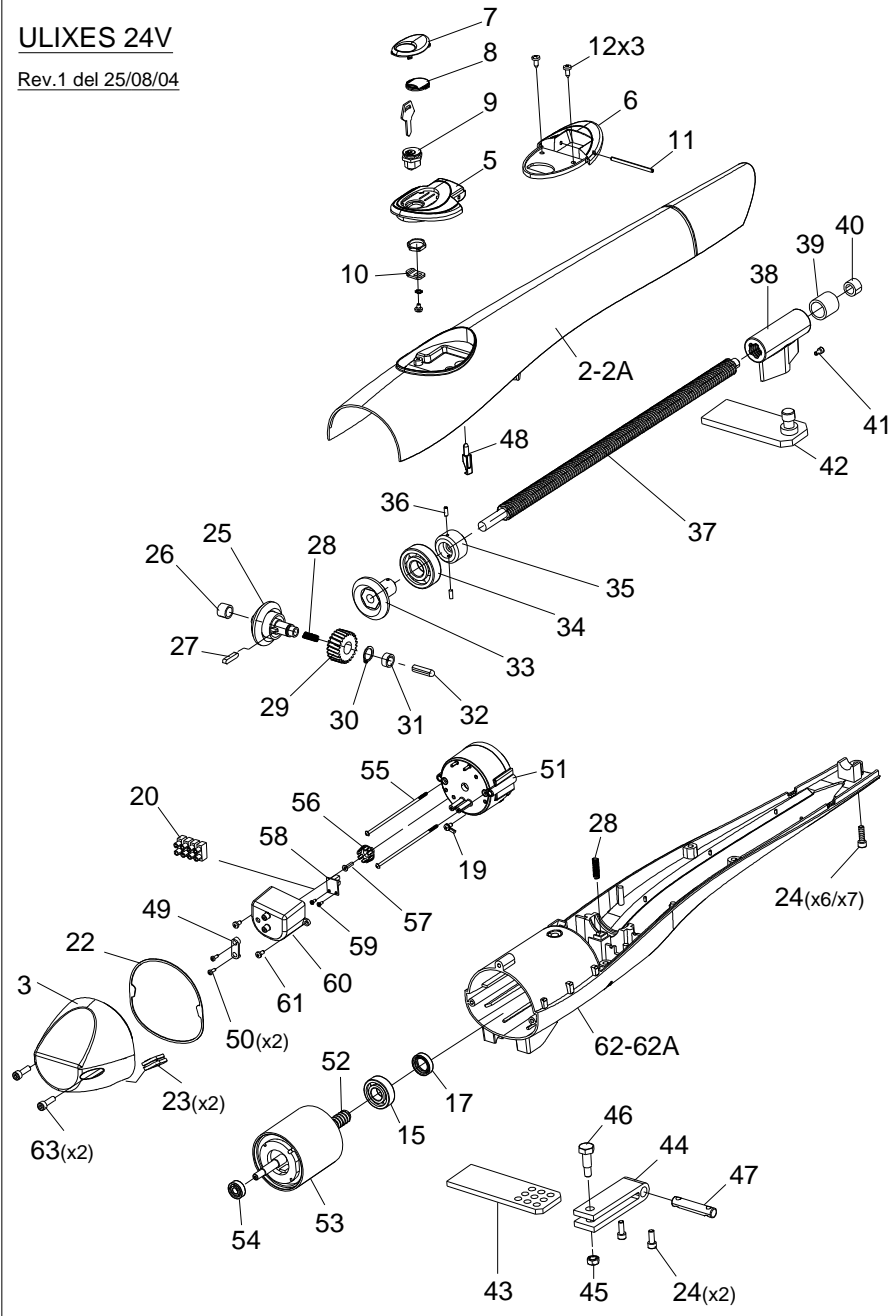


Fig. 6

ULIXES 24V

Rev.1 del 25/08/04



ULIXES 230V

Rev.1 del 25/08/04

