

JumpStart: Azure Modernization

Jump-start your Azure modernization journey with a rapid, AI-driven automated baseline discovery of your digital estate, leveraging Dr Migrate for optimization and modernization insights.



A unique approach to Azure modernization

Cloud modernization is a complex undertaking, requiring careful planning and execution. Clients often struggle with challenges in understanding dependencies between apps and workloads, and prioritizing apps for migration and modernization.

Teton Cloud Consulting provides an accelerator to cloud adoption with a rapid baseline discovery leveraging Dr Migrate, Microsoft's globally endorsed Azure discovery, planning, and assessment tool. Teton Cloud Consulting's solution accelerator approach for Azure brings clients a unique blend of expertise, automation, and security-focused execution following the Microsoft CAF.

Key activities

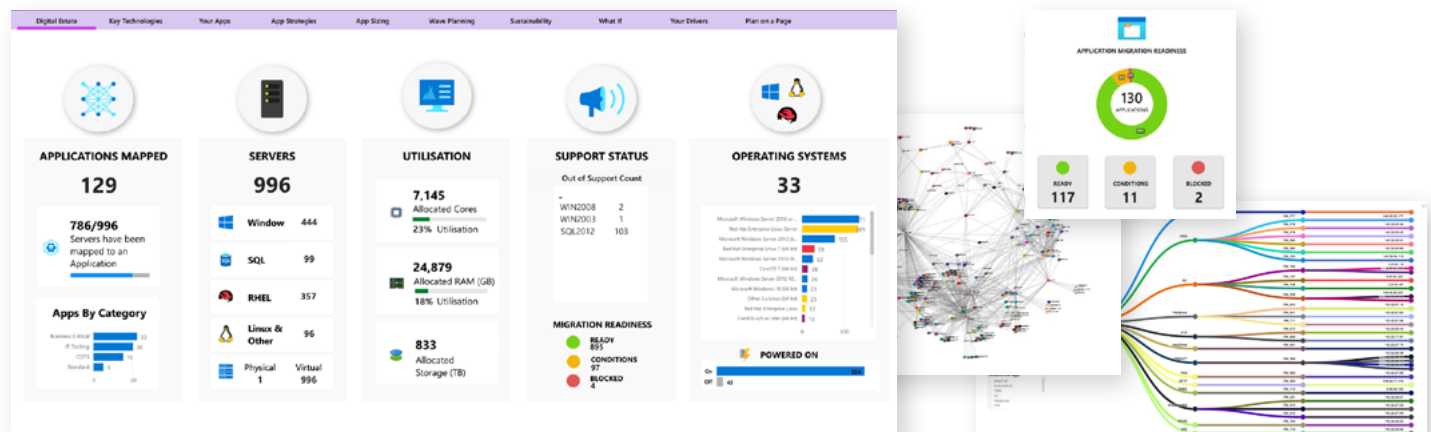
- **Leverage/Deploy** Azure Migrate for discovery (up to 500 servers).
- **Deploy** Dr Migrate.
- **Monitor** discovery collection (10 to 15 days).
- **Review** data flow into Dr Migrate.
- **Create** modernization strategy workshop and roadmap.
- **Generate** day-zero reports and review.
 - **Express insights**
 - Windows, RHEL, SQL, EOL, hybrid benefits, PaaS alternatives, simple consolidation strategies, IT tools, security, modern workplace, TCO scenarios, rehost, AVS, and sustainability
 - **Security insights**
 - Vulnerability detection (NIST), threat protection coverage gaps, Defender for Cloud pricing, Azure Arc opportunities, and pricing

Offering overview

Timeline: 2 to 4 weeks

Includes:

- **Rapid discovery of your digital estate:** Scan your existing infrastructure to identify servers, applications, and network connections.
- **Data visualization:** Present information through intuitive dashboards and reports, including real-time traffic flow and potential impact alerts.
- **Cost estimation:** Provide estimated cost projections for your Azure native services based on your current infrastructure and potential optimizations.
- **Business case support:** Generate executive summaries and presentations to help justify the migration project to stakeholders.
- **Roadmap:** Generate AI-driven pilot wave plans and customized roadmaps to modernize your digital estate.



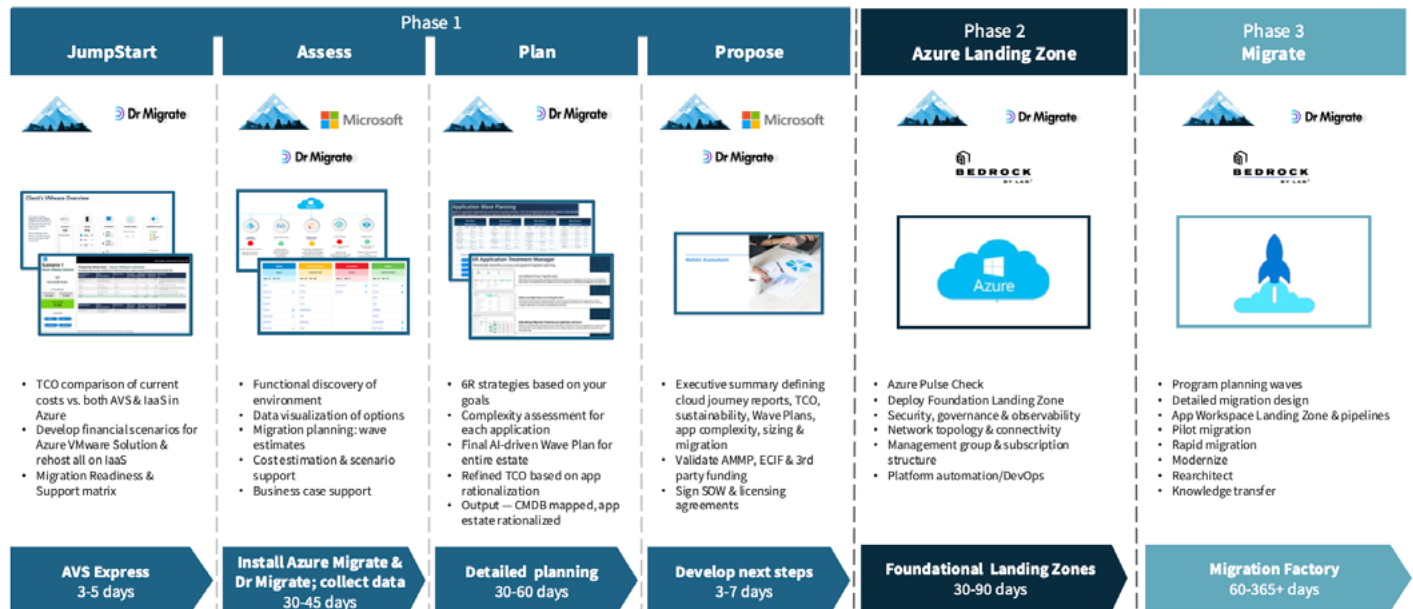
About Teton and LAB³

300+ professionals
300+ projects completed
9/10 client satisfaction rating
500+ certifications

Dr Migrate product features

- Native Microsoft technology
- Real-time dashboards
- In-depth technical analysis
- Application mapping & 6R treatment
- Network inventory
- Cost & effort projections
- Automated wave planning

End-to-end Microsoft Azure accelerated cloud adoption



Our purpose

Teton Cloud Consulting was born in Jackson Hole, Wyoming, where the Teton Range rises through the clouds. Teton Cloud Consulting's mission is to bring disruptive technologies that help you expand your vision, align your resources, and execute a well-built strategy to accelerate your journey through the clouds.

Our values

We embrace the challenge of exploring uncharted territory in technology. We constantly seek new ideas, experiment with emerging technologies, and push the boundaries of what's possible for our clients.

Integrity

Our actions are transparent and grounded in honesty. We prioritize ethical conduct and build trust with every interaction.

Grit

We embrace challenges with a "can-do" attitude. We adapt to change, persevere through difficulties, and consistently deliver results.

Trailblazing

We foster a culture of self-reliance and innovative thinking. We empower our consultants to take ownership and develop creative solutions.

Hitting the mark

We strive for excellence in everything we do. We are committed to delivering high-quality work that exceeds client expectations.



Where will your ambition take you? Let's talk.

Visit www.tetoncloudconsulting.com