

Hurricane Ian After Action Report



Purpose

- Quick Rinse to review and evaluate:
 - Expectations
 - Reality
 - Outcomes
 - Review

Expectations

- Prelims actions- Meetings with Emergency Management Director to scope the threat
- beach mats, shade sails, fuel vehicles gensets, pre position hose/pumps, coordinate with FD, drop TH shutters etc
- Low grade Cat 1; probability of canal flooding
- Uncertainties, track false sense

Realities

No evacs min impacts surf watching Fri am

Tide chart, flooding pics, wind gauge bridge

Hurricane track Charleston, G'town then

Conway = surge

No issues of power or potable water

Sewer system lift stations performance

Tidal surge not stormwater in traditional sense –canals, 300 block, west end



AA

dashboard.hohonu.io



to SLC, 1



SLC, Roun...



Your Own...



24/7 Wate...



Hohonu



Notion - T...

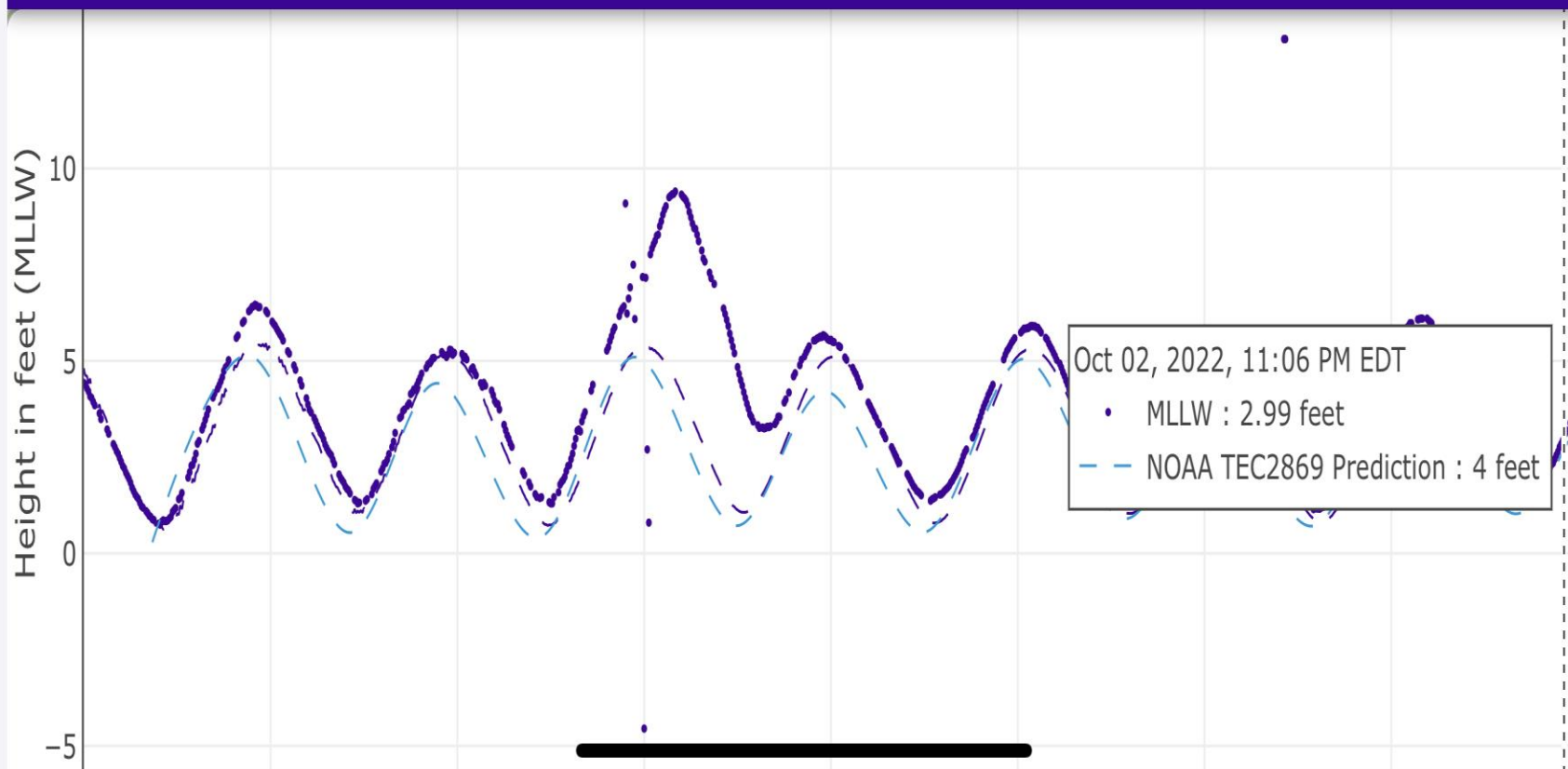


Hohonu



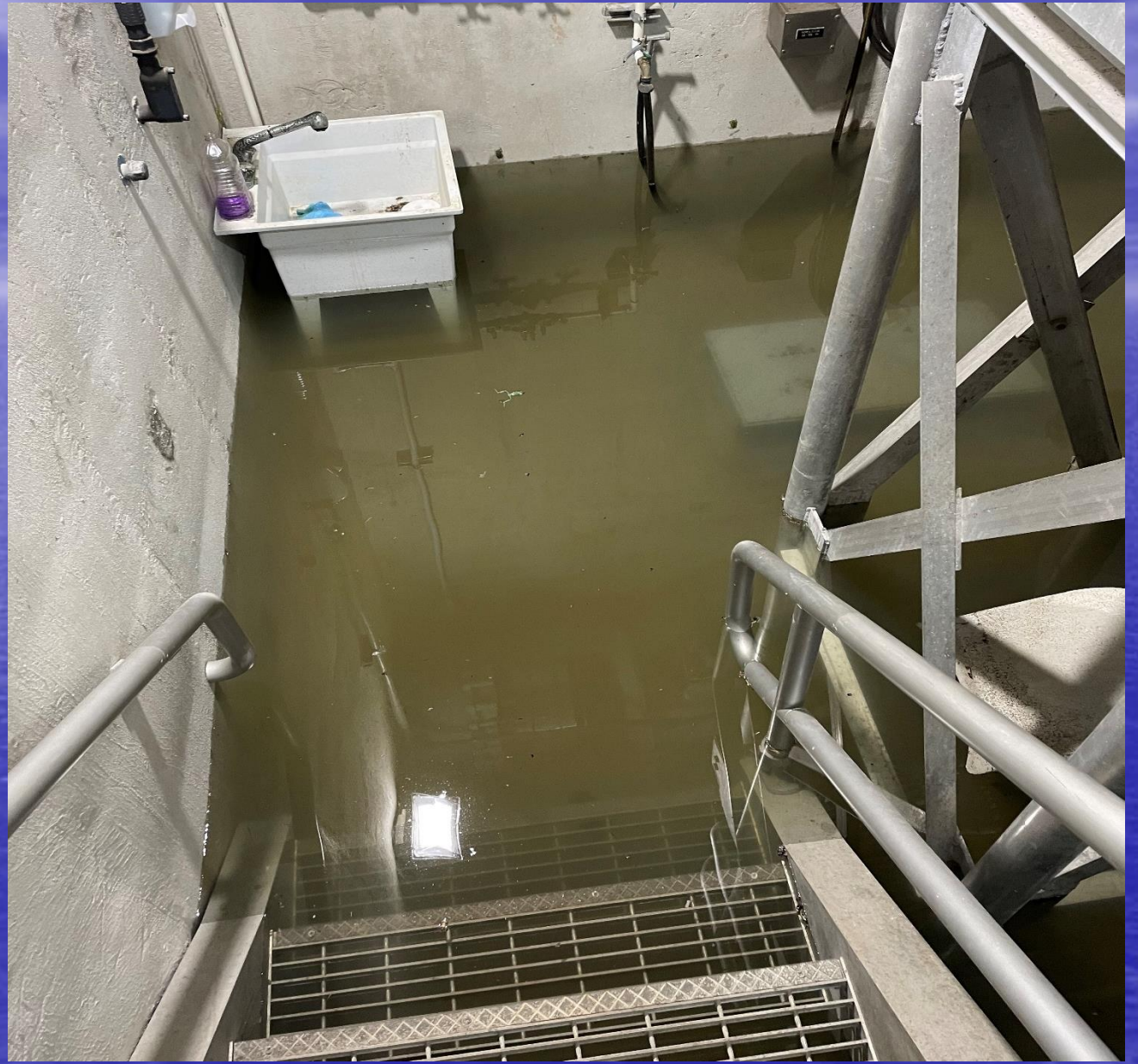
Hohonu

New Site Location













Outcomes

- Lost a truck
- Fire Department personnel kudos
 - Engine 872; Chief Doug Todd, Todd Robins, Tyler Johnson, Ken Hall
- LS #4 Water over top slab and wet well
- Station #4 Basement needs water tight hatch
- Station 4 wet well needs 24 inches added to top
- Greensboro Lift Station 2 needs upgrade asap

Outcomes

- Perfect setup for minimum structural damage and catastrophic pump station damage
- Impossible to operate sewer collection system under water
- Need island wide emergency drainage
- Pumping water impossible with tidal flooding
- Public works dept worked 17 hour day to speed recovery: operational by noon Saturday

Outcomes

- Ransom ware
- Food
- Sea oats harvest timely
- Inspections damage assessments windshield
canals docks
- 8\$mm

Review

Strand performance

Communications not a real time omnipotency

Debris – scale of disaster debris contract

Declaration status -

Evaluate “walk away” point of service delivery

Employee endangerment, realistic service levels

