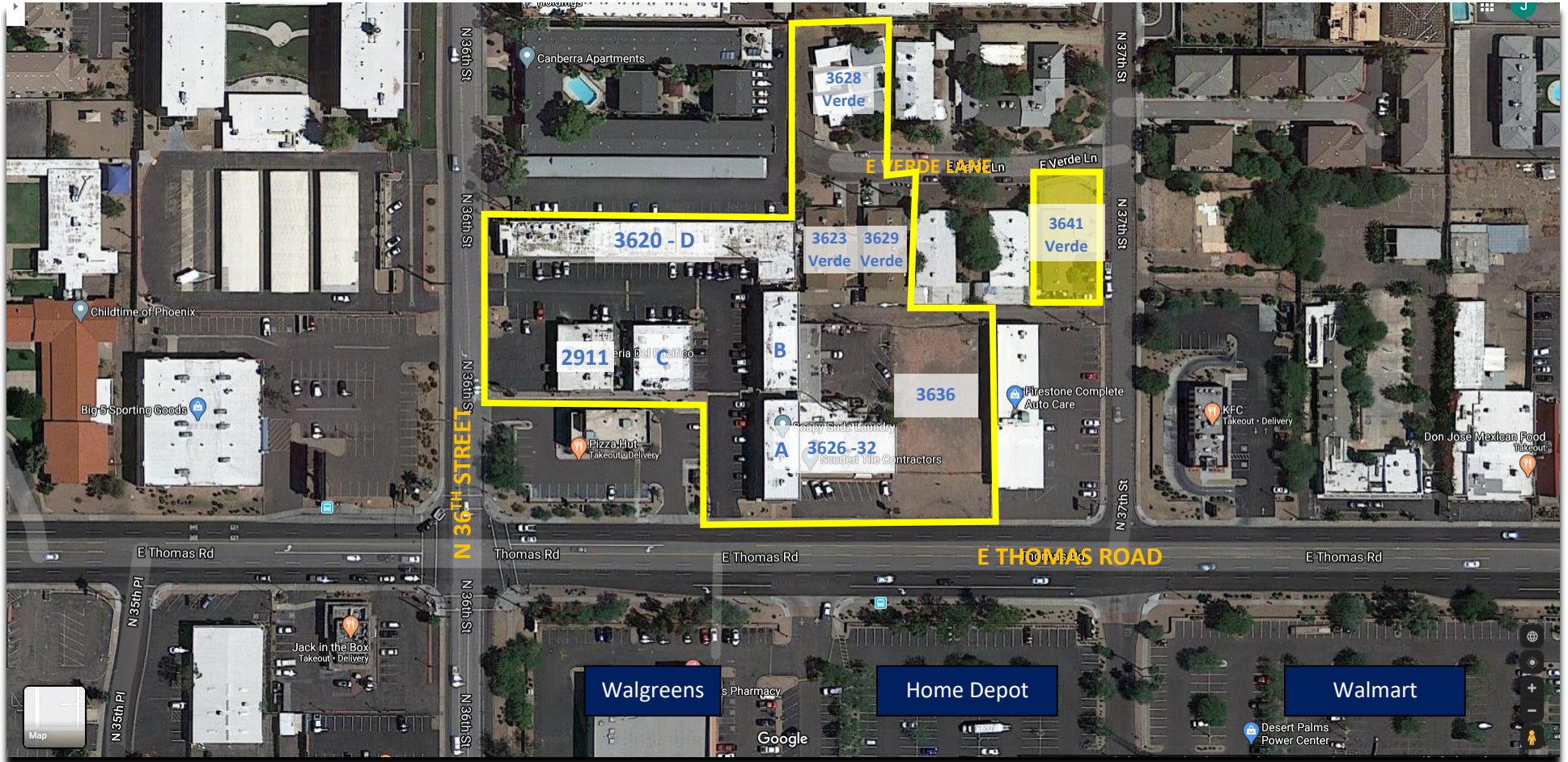


**3620 - 3636 E THOMAS ROAD, 2911 N 36<sup>TH</sup> STREET (RETAIL / OFFICE)  
 3623-3629 & 3641 E VERDE LANE (APARTMENTS)  
 PHOENIX, AZ 85018**



<u>Property Address</u>	<u>Building SF</u>	<u>Land SF</u>
3620 - Bldg A / B	6,930 / 6,930	18,307
3608 - Bldg C	3,528	8,320
3620 - Bldg D	10,045	20,033
2911 N 36 <sup>th</sup>	2,600	13,827
3626-3632 E Thomas	7,853	19,300
3636 E Thomas	N/A	19,300
3623, 3628, 3629 E Verde - Apts	7,754	25,837
<b>Totals:</b>	<b>45,640</b>	<b>124,924 (2.9 acres)</b>

- 3623 E Verde Lane is a 3-unit 2,482 SF apartment building on 7,075 SF of R-3 land.
- 3628 E Verde Lane is a 3-unit 2,535 SF apartment building on 12,042 SF zoned R-3.
- 3629 E Verde Lane is a 3-unit 2,737 SF apartment building on 6,720 SF zoned R-3.
- 3641 E Verde Lane is a 2-unit 1,788 SF apartment building on 6,887 SF zoned R-3.
- Additional cell tower income at 3620 Building D.