



Tecton
ARCHITECTS

PK-5 ELEMENTARY SCHOOLS & EAGLE ACADEMY THERAPEUTIC DAY SCHOOL

ENFIELD, CT

PRE-REFERENDUM BUILDING COMMITTEE MEETING

09.24.2025

As presented at the Pre-Referendum Building Committee meeting on September 24, 2025. All information contained herein is subject to change as further planning and refinements are developed.

AGENDA

1. Update on Design Team activities

2. Discuss Refined/Preferred Options

3. Interactive Discussion ~ Benefits/Challenges of Options

- a. Summarize / Recap Benefits & Challenges (from last meeting)
- b. Additional discussion, comments, and questions
- c. Activity ~ If 3 or 4, where, how, logistics & schedule

Main Focus!

4. Community Engagement/Communications

- a. Update on materials
- b. Review of Community Conversation No.1 template
- c. Set a date for the November Think Tank.
- d. Other engagement efforts

5. Next Steps

- a. Follow up meeting with town Stowe ELC programs
- b. Refine Eagle Academy program/needs
- c. Other requests

UNDERSTANDING YOU...YOUR EXISTING SCHOOL BUILDINGS



**Average Age:
58 Years Old**

Building Name	Orig. Cons.	Reno. Add'(s)	Roof Repl.	Gr. Lvl	Curr. Enroll. ¹	GSF ²	Comments
Stowe Early Learning <i>Head Start, Integrated PK, PK STEAM Academy</i>	1963 (62 Yrs.)	Venting (1994) Reno/Add (2001) Kit./Mods (2011) Wind. Doors (2015) Sec. Wind. (2016) HVAC (2019)	(Planned 2025) 2001 Add.	Pre-K	272 102+119+51	48,102 177 SF/Stu.	
Eagle Academy	2001 (24 Yrs.)	Reno (2019)	2001 Orig.	K-12	28 19H; 7M; 2E	12,869 460 SF/Stu.	
Henry Barnard School**	1968 (57 Yrs.)	Reno/Add (2001) Office Mod (2013)	✔ 2020 Orig. 2001 Add.	K-2	365 319 +46 DLP	59,587 163 SF/Stu.	
Prudence Crandall School	1966 (59 Yrs.)	Reno/Add (2001)	(Planned 2025) 2001 Add.	3-5	369 352 +17 ECP	76,018 206 SF/Stu.	
Hazardville Memorial School	1954 (71 Yrs.)	Hazmat (1996) Reno/Add (2001)	2023 1/2 Orig. 2001 Add.	K-2	305	54,316 178 SF/Stu.	
Eli Whitney School**	1967 (58 Yrs.)	Code (1993) Reno/Add (2001) Playscape (2012)	✔ 2023 Orig. 2001 Add.	3-5	359 351 +8 IAL	58,629 163 SF/Stu.	
Enfield Street School	1953 (72 Yrs.)	Additions (1962) Doors (1994) Reno/Add (2001) Fire Supp. (2003) Energy (2017)	(Planned 2025) 2001 Add.	K-2	236 228 +8 DLP	48,349 205 SF/Stu.	
Edgar H. Parkman School**	1964 (61 Yrs.)	Roof (1993) Windows (2000) Reno/Add (2001) Energy (2017)	(Planned 2025) 2001 Add.	3-5	287 267 +20 ASD	60,326 210 SF/Stu.	

DRAFT - Working
to confirm details

As presented at the Pre-Referendum Building Committee meeting on September 24, 2025. All information contained herein is subject to change as further planning and refinements are developed.

**SIMILAR ARCHITECTURAL LAYOUTS - ORIGINAL CONSTRUCTION & ADDITIONS
 1. Data from: EPS 2024-2025 Enrollment and Staffing Excel File, current through June 2025 – highest reported enrollment used
 2. Data from Existing Drawings or 2001 Additions, by Jerri Cook & Jepson Architects
 3. Data from Enfield GIS Website, Vision Government Solutions Property Card

DLP = Developmental Learning Program IAL = Intermediate Adaptive Learning
ECP = Educational Counseling Program ASD = Autism Spectrum Disorder

Program Needs

1. **Capacity** ~ Additional classrooms, larger area for classrooms, typically capped at 8P/C.R., could serve more students (100+/-). Structure = C.R., time aside, seclusion.
2. **Elementary Grades** ~ Ideally expand to accommodate E.S. students (in distinct area of school)
3. **Core Program Areas** ~ Space for Physical Education (currently outside or in hall), Cafeteria, Family Consumer Science, Art, Tech. Ed., Stage/Drama, Media Center, Flex. space
4. **Support Space** ~ work/break out spaces for both students & staff, additional support offices + break room, storage at entry for student materials
5. **Outdoor Space** ~ Appropriate and secure outdoor learning environment/classrooms
6. Consider possible expansion for out of district students

Information

- Grade Level ~ K-12
- Total Enroll. ~ 28 (19H; 7M; 2E)
- Total Staff ~ 10 (+ shared)
- Site Size ~ 13.85 Acres (shared with ESS)
- Building Size ~ 12,956 SF
- Age ~ 2001 (24 Yrs.)
- Additions ~ Reno (2019)
- “Ideally located”
- “**Overall goal** of the program is for students to successfully return to their grade-specific home school”

EAGLE ACADEMY | EXISTING CONDITIONS



Site ~ Site traffic, loop drop-off, parking all work well for current enrollment, but want to expand. Some cracking and deterioration at sidewalks, blacktop play and asphalt drive aisles. Some recreation areas are still at an early elementary age-level, improved basketball court desired, students use high school tennis courts and would want pickleball and picnic tables for outdoor learning.

Architectural Exterior ~ Fair condition overall, relatively newer building, some signs of efflorescence and staining on façade, some roof maintenance items around drains and equipment.





Summary of Eagle Discussion 9/24/2025

- Intentional adjacency between Classroom, Time Aside, Blue Room & Alternative Work areas
- Two entries with (2) Admin areas and (2) Nurse suites is ideal
- Grow to 100 Students in 12 Classrooms: 4 Primary, 8 Secondary (greater need in secondary)
- 4-Classroom pods are ideal for secondary students who rotate between content areas
- Distribute Social Work, Time Aside, Pay Off rooms
- Enhance specials and vocational offerings: Art, Gym, Science, Computers, Culinary (FCS)
- Space for community partners like CHC, Food Pantry, Clothing Closet
- Enhance outdoor areas for movement breaks, outdoor lunch, and athletics (basketball, tennis, pickleball, swings, volleyball, badminton, four square, garden...)

• Central location in Town is preferred



Summary of PK Discussion 9/5/2025

What's great about a dedicated PK building:

- Surrounded by early childhood staff in one space
- Culture and professional learning
- No one is potty trained and that's understood!
- Co-location of all service providers focused on PK (speech, FRC, etc.)

What's great about a PK-5 building:

- Can sometimes feel like an island in a stand-alone building
- Opportunity for alignment, "Step Up" Day
- Family feel and continuity
- Reduce transitions and paperwork
- Larger community
- Program spaces for art, music and movement that currently happen in the classroom

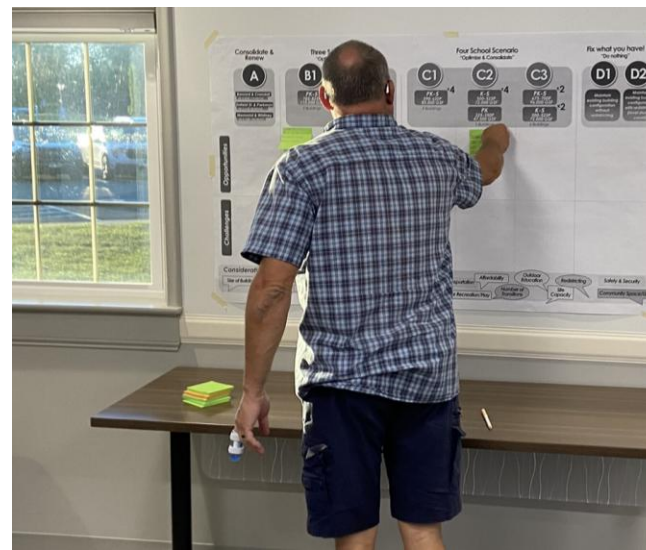
LAST TIME...FEEDBACK FROM 08/27/25 MEETING



A	B1	B2	C1	C2	C3
Barnard & Crandall PK-5, 825P, 110,000 GSF Enfield St. & Parkman PK-5, 613P, 95,000 GSF Memorial & Whitney PK-5, 714P, 100,250 GSF	PK-5 ^{x3} 785-825P 110,000 GSF 3 Buildings	K-5 ^{x3} 675-700P 96,000 GSF PK 325-350P 47,500 GSF 4 Buildings	PK-5 ^{x4} 590-620P 85,000 GSF 4 Buildings	K-5 ^{x4} 500-525P 72,000 GSF PK 325-350P 47,500 GSF 5 Buildings	PK 675 96,000 K 500 72,000 4 Buildings

Handwritten notes on whiteboard:

- Best practice to create approach and layout
- Academic based opportunities
- collaboration
- Less transitions!
- Have specialized Programs in Each School



As presented at the Referendum Building Committee meeting on September 24, 2025. All information contained herein is subject to change as further planning and refinements are developed.

Consolidate & Renew

Three School Scenario "Optimize & Consolidate"

Four School Scenario "Optimize & Consolidate"

Fix what you have! "Do nothing"

A

Barnard & Crandall

PK-5, 825P, 110,000 GSF

Enfield St. & Parkman

PK-5, 613P, 85,000 GSF

Memorial & Whitney

PK-5, 754P, 100,250 GSF

B1

PK-5
785-825P
110,000 GSF

3 Buildings

x3

B2

K-5
675-700P
96,000 GSF

PK
325-350P
47,500 GSF
4 Buildings

x3

C1

PK-5
590-620P
85,000 GSF

4 Buildings

x4

C2

K-5
500-525P
72,000 GSF

PK
325-350P
47,500 GSF
5 Buildings

x4

C3

PK-5
675-700P
96,000 GSF

K-5
500-525P
72,000 GSF
4 Buildings

x2

x2

D1

Maintain existing building configuration without redistricting

D2

Maintain existing building configuration with redistricting (level student count)

Opportunities

Challenges

Considerations...

As presented at the Pre-Referendum Building Committee meeting on September 24, 2025. All information contained herein is subject to change as further planning and refinements are developed.

Reimbursement

Cost

Size of Building

Size of School (Students)

Teacher Collaboration

Program Offerings

Operational Efficiency

Mentoring

Transportation

Outdoor Recreation/Play

Affordability

Number of Transitions

Outdoor Education

Site Capacity

Redistricting

Safety & Security

Community Space/Use

Opportunities

Challenges

B1 Three School Scenario
"Optimize & Consolidate"

PK
325-350P
47,500 GSF

x3

3 Buildings

B2 Three School Scenario
"Optimize & Consolidate"

K-5
675-700P
96,000 GSF

x3

PK-5
785-825P
110,000 GSF

4 Buildings

C1 Four School Scenario
"Optimize & Consolidate"
+ Eagle Academy

PK-5
590-620P
85,000 GSF

x4

4 Buildings

E1 Five School Scenario
"Optimize & Consolidate"
+ Eagle Academy

PK-5
475-500P
68,700 GSF

x5

5 Buildings

Considerations...

As presented at the Pre-Referendum Public Meeting on September 24, 2025. All information contained herein is subject to change as further planning and refinements are developed.

Reimbursement

Size of Building

Size of School (Students)

Cost

Teacher Collaboration

Program Offerings

Operational Efficiency

Mentoring

Transportation

Outdoor Recreation/Play

Affordability

Number of Transitions

Outdoor Education

Site Capacity

Redistricting

Safety & Security

Community Space/Use

OPTIONS FOR CONSIDERATION...EXPLORING ALL AVENUES



A

Consolidate & Renew

Narrowed options from mtg. August 27, 2025

G/L: PK-5
Stud.: 825P
Area: 110,000 GSF
Type: New/RNV

Enfield St. & Parkman

G/L: PK-5
Stud.: 613P
Area: 85,000 GSF
Type: New/RNV

Memorial & Whitney

G/L: PK-5
Stud.: 754P
Area: 100,250 GSF
Type: New/RNV

B

Three School Scenario "Optimize & Consolidate"

Redistrict, equalize populations where possible, consider New & RNV build options

B1 3~PK-5's

G/L: PK-5
Stud.: 785-825P
Area: 110,000 GSF
Type: New/RNV

G/L: PK-5
Stud.: 785-825P
Area: 110,000 GSF
Type: New/RNV

G/L: PK-5
Stud.: 785-825P
Area: 110,000 GSF
Type: New/RNV

B2 3~K-5's + 1 PK

G/L: K-5
Stud.: 675-700P
Area: 96,000 GSF
Type: New/RNV

G/L: K-5
Stud.: 675-700P
Area: 96,000 GSF
Type: New/RNV

G/L: K-5
Stud.: 675-700P
Area: 96,000 GSF
Type: New/RNV

G/L: PK
Stud.: 325-350P
Area: 47,500 GSF
Type: New/RNV

C

Four School Scenario "Optimize & Consolidate"

Redistrict, equalize populations where possible, consider New & RNV build options

C1 4~PK-5's

G/L: PK-5
Stud.: 590-620P
Area: 85,000 GSF
Type: New/RNV

G/L: PK-5
Stud.: 590-620P
Area: 85,000 GSF
Type: New/RNV

G/L: PK-5
Stud.: 590-620P
Area: 85,000 GSF
Type: New/RNV

G/L: PK-5
Stud.: 590-620P
Area: 85,000 GSF
Type: New/RNV

C2 4~K-5's + 1 PK

G/L: K-5
Stud.: 500-525P
Area: 72,000 GSF
Type: New/RNV

G/L: K-5
Stud.: 500-525P
Area: 72,000 GSF
Type: New/RNV

G/L: K-5
Stud.: 500-525P
Area: 72,000 GSF
Type: New/RNV

G/L: K-5
Stud.: 500-525P
Area: 72,000 GSF
Type: New/RNV

G/L: PK
Stud.: 325-350P
Area: 47,500 GSF
Type: New/RNV

D

Fix What you Have! "Do Nothing"

- Prepare a strategic capital repair project
- Conduct yearly improvements based upon EOUL & prioritization of conditions

Benefit

- Ability to adjust on a yearly basis

Challenges

- Will result in significant reduction of state reimbursement
- Con ~ Does not address capacity of 21st century learning & educational environment.
- Con ~ Will cost the community more over a longer period of time
- Con ~ will pay a premium to conduct smaller projects in compressed timeframe
- Con ~ No swing space to relocate students during repairs/upgrades

Note: This option does not include increased enrollment. As presented at the Pre-Referendum Building Committee meeting on September 24, 2025. All information contained herein is subject to change as further planning and refinements are developed.

Consolidate & Renew

Three School Scenario "Optimize & Consolidate"

Four School Scenario "Optimize & Consolidate"

Fix what you have! "Do nothing"

A

- Barnard & Crandall
PK-5, 825P, 110,000 GSF
- Enfield St. & Parkman
PK-5, 613P, 85,000 GSF
- Memorial & Whitney
PK-5, 754P, 100,250 GSF

B1 x3

- PK-5
785-825P
110,000 GSF
3 Buildings

B2 x3

- K-5
675-700P
96,000 GSF
- PK
325-350P
47,500 GSF
4 Buildings

C1 x4

- PK-5
590-620P
85,000 GSF
4 Buildings

C2 x4

- K-5
500-525P
72,000 GSF
- PK
325-350P
47,500 GSF
5 Buildings

C3 x2

- PK-5
675-700P
96,000 GSF
- K-5
500-525P
72,000 GSF
4 Buildings

D1 x2

- Maintain existing building configuration without redistricting

D2 x2

- Maintain existing building configuration with redistricting (level student count)

Opportunities

(NONE)

Challenges

- Cost will be too much both short and long term
- Zero reimbursement
- Challenges with swing space

- Higher reimbursement rate
- Most familiar to current families and voters (sister schools)
- Best chance of passing referendum
- Lowest cost to town
- Swing space?
- Builds long term relationships
- Common design

- Staffing schools with 785-825 kiddos
- Larger schools, parking and busing
- Redistricting necessary
- Space for programming
- Outdoor spaces
- PK unique needs

- Higher reimbursement rate
- Most familiar to current families and voters (sister schools)
- Best chance of passing referendum
- Lowest cost to town
- Swing space?
- Dedicated PK school with expansion & community space (ECDC)

- Larger schools, parking and busing
- Redistricting necessary
- Convincing the public of 4 buildings
- Cost to town is greater
- Limited space to build
- Less funding

- Best reimbursement
- Best cost to Enfield
- Swing space?
- Builds long term relationships
- More mentorship opportunities
- Smaller schools
- Better travel time for PK, closer to home
- Fewer transitions
- Teacher collaboration
- Siblings in same school
- Builds strong community alignment
- More academic opportunities
- Specialized programs in each school
- More fields
- Common design

- Redistricting necessary
- Identifying site locations, limited space to build
- PK unique needs

- More academic opportunities
- Specialized programs in each school
- Fewer transitions
- Teacher collaboration
- Dedicated PK school with expansion & community space (ECDC)
- Better size of school

- Redistricting necessary
- Identifying site locations, limited space to build
- Convincing the public of 5 buildings
- Cost & Public vote
- Town ECDC PK included?

- More academic opportunities
- Specialized programs in each school
- Fewer transitions
- Teacher collaboration

- Redistricting necessary
- Identifying site locations, limited space to build
- Will be inequitable (or perceived so with PK only in some buildings)
- Address needs of PK not in their neighborhood school

(NONE)

- Cost prohibitive
- Zero reimbursement
- Will never pass referendum
- Capacity to complete

Considerations...

As presented at the Pre-Referendum Meeting on September 24, 2025. All information contained herein is subject to change as further planning and refinements are developed.



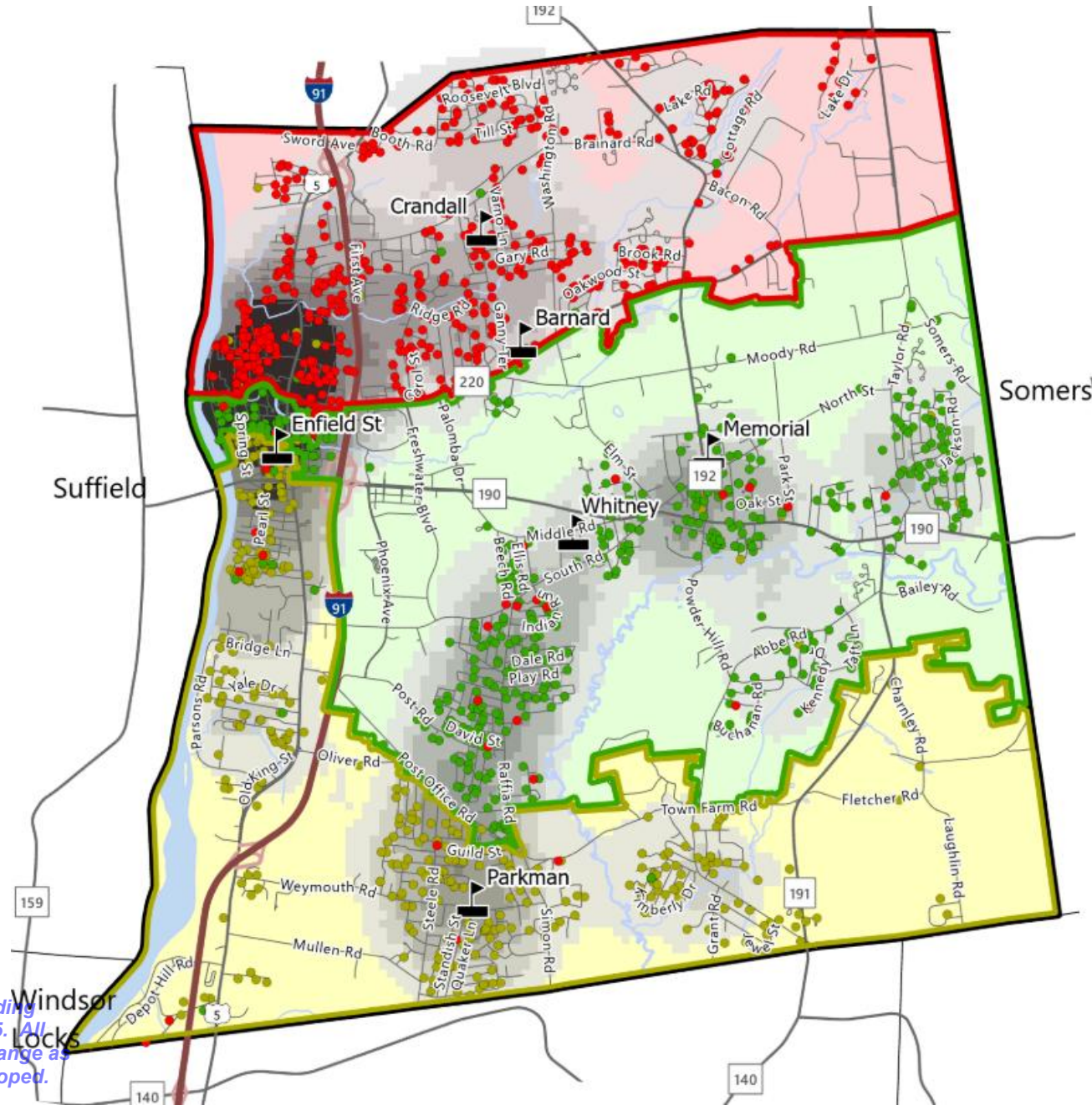
- 1. Costs are based on average historical data & current markets.**
- 2. Costs have been escalated to the midpoint of construction.**
(Avg. average annual inc. of 4.5%, which represents the potential mid-point of construction for any initial phase of a plan)
- 3. Adjustments will be made after selecting a preferred option.**
- 4. Does not include operational costs or site logistics expenses for multi-phase renovations.**
- 5. State Reimbursement for Renovate as New ~ 70.00%** (*2026 Rates)
- 6. State Reimbursement for New Construction ~ 68.33%** (*2026 Rates)
- 7. Additional reimbursement for Special Ed. Program (15% Special Ed. Area only) and Early Childhood Care (15%, entire building)**
- 8. Includes presumption of space waivers via special legislation!**

As presented at the Pre-Referendum Building

Committee meeting on September 24, 2025. All

information is subject to Chapter 173, Sec. 10-285a, and the new construction or replacement of a school building when a town or regional school district can demonstrate that a new construction or replacement is less expensive than a renovation, extension or major alteration of an existing school building for each town on a continuous scale

EXISTING ATTENDANCE ZONES...2025-26 ENROLLMENT



- | | |
|---|--|
| ES Attendance Zones | Elementary Student Density (per sq. mile) |
| Barnard & Crandall | Lowest Density |
| Enfield Street & Parkman | Moderate Density |
| Memorial & Whitney | Greatest Density |

As presented at the Pre-Referendum Building Committee meeting on September 24, 2025. All information contained herein is subject to change as further planning and refinements are developed.

PLANNING OPTIONS...INITIAL DISCUSSIONS...WHAT IS POSSIBLE

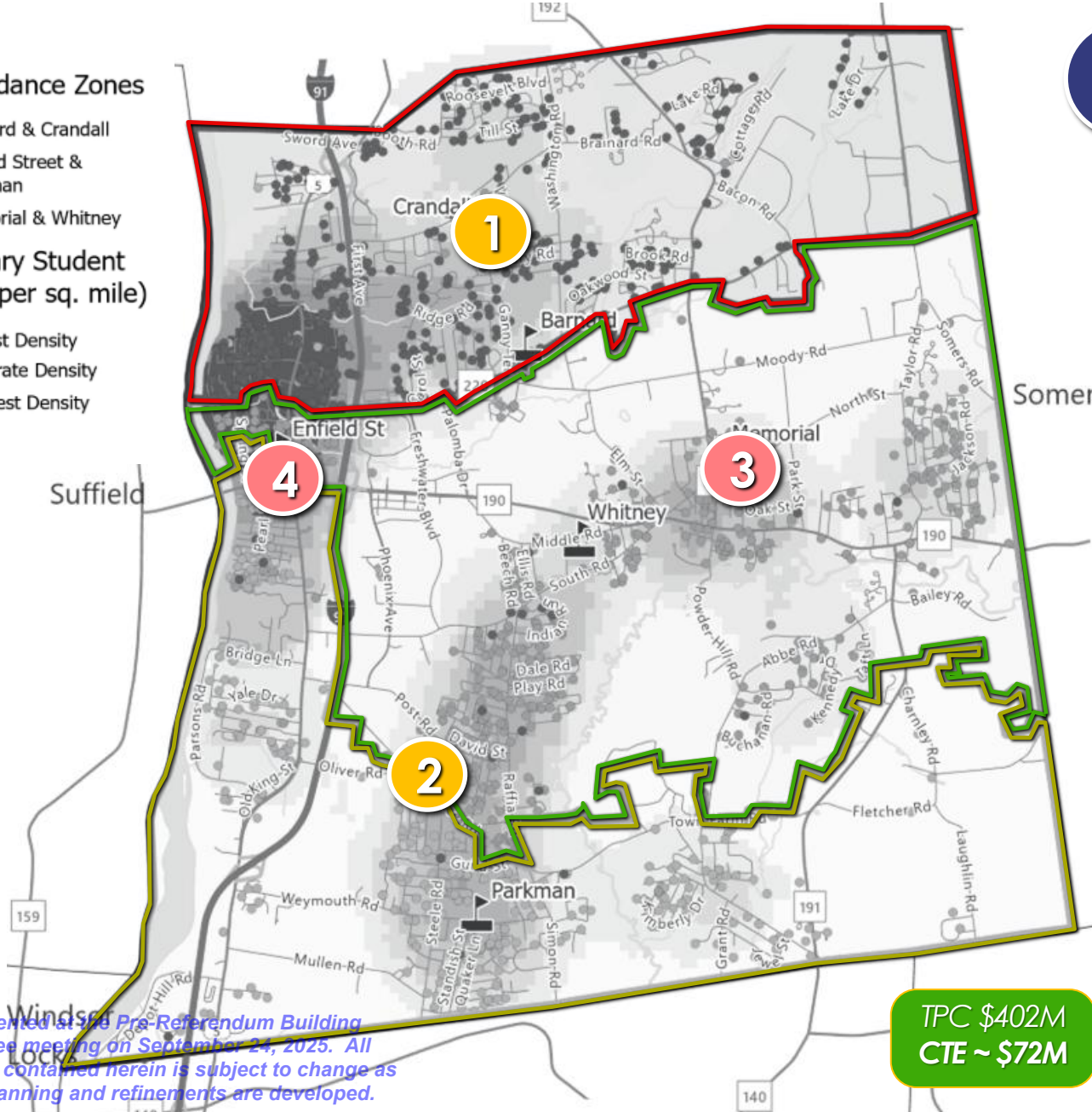


ES Attendance Zones

- Barnard & Crandall
- Enfield Street & Parkman
- Memorial & Whitney

Elementary Student Density (per sq. mile)

- Lowest Density
- Moderate Density
- Greatest Density



TPC \$402M
CTE ~ \$72M

B1 Three E.S. School Scenario “Optimize & Consolidate” + Eagle Academy

- 1

E.S. #1 @ P. Crandall

G/L: PK-5
 # Stud.: 785-825P
 Area: 110,000 GSF
 Type: New

TPC \$120M
CTE ~ \$21M

2

E.S. #2 @ Stowe

G/L: PK-5
 # Stud.: 785-825P
 Area: 110,000 GSF
 Type: New

TPC \$121M
CTE ~ \$21M

3

E.S. #3 @ Haz. Mem.

G/L: PK-5
 # Stud.: 785-825P
 Area: 110,000 GSF
 Type: New

TPC \$123M
CTE ~ \$22M

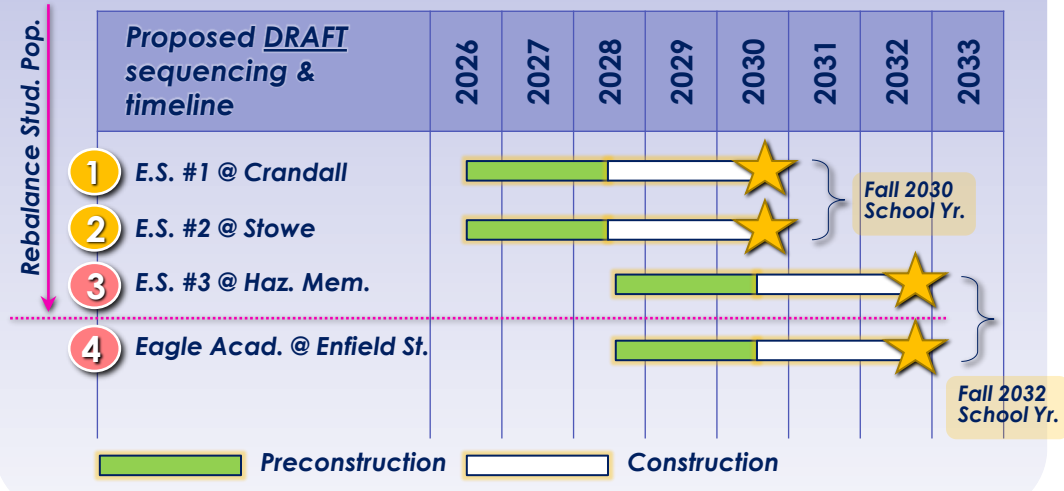
4

Eagle @ Enfield St. E.S.

G/L: K-12
 # Stud.: 85-100P
 Area: 55-60K GSF
 Type: Reno.

TPC \$38M
CTE ~ \$8M

ECDC/Town @ (E) Eagle



As presented at 5/28 Pre-Referendum Building Committee meeting on September 24, 2025. All information contained herein is subject to change as further planning and refinements are developed.

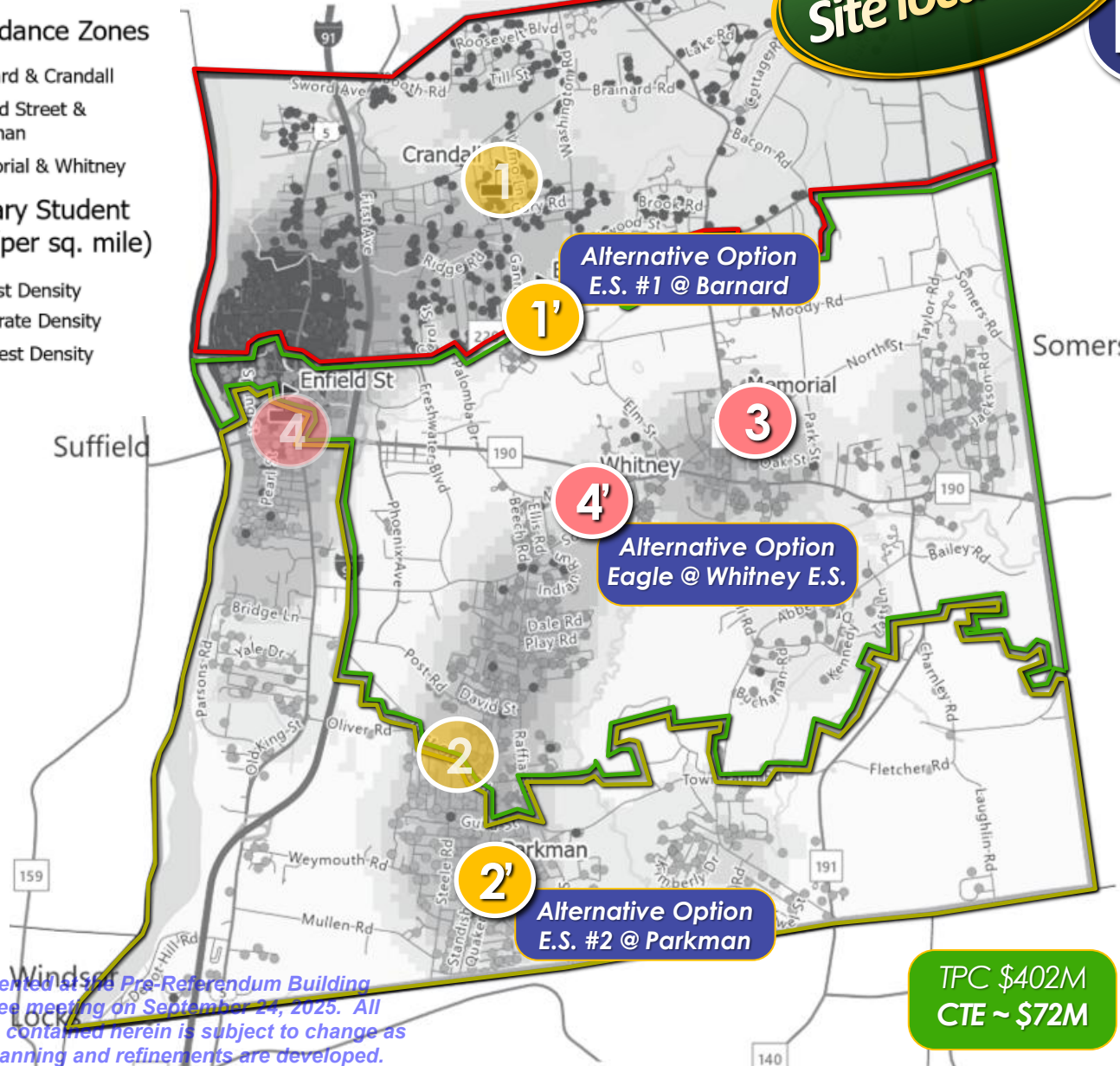
PLANNING OPTIONS...INITIAL DISCUSSION IS POSSIBLE



Alternative Site locations

B1 Three E.S. School Scenario "Optimize & Consolidate" + Eagle Academy

- ES Attendance Zones**
- Barnard & Crandall
 - Enfield Street & Parkman
 - Memorial & Whitney
- Elementary Student Density (per sq. mile)**
- Lowest Density
 - Moderate Density
 - Greatest Density



1

Alternative Option
E.S. #1 @ Barnard

1'

3

4'

Alternative Option
Eagle @ Whitney E.S.

2

2'

Alternative Option
E.S. #2 @ Parkman

TPC \$402M
CTE ~ \$72M

1'

E.S. #1 @ P. Barnard

G/L: PK-5
Stud.: 785-825P
Area: 110,000 GSF
Type: New

TPC \$120M
CTE ~ \$21M

2'

E.S. #2 @ Parkman

G/L: PK-5
Stud.: 785-825P
Area: 110,000 GSF
Type: New

TPC \$121M
CTE ~ \$21M

3

E.S. #3 @ Haz. Mem.

G/L: PK-5
Stud.: 785-825P
Area: 110,000 GSF
Type: New

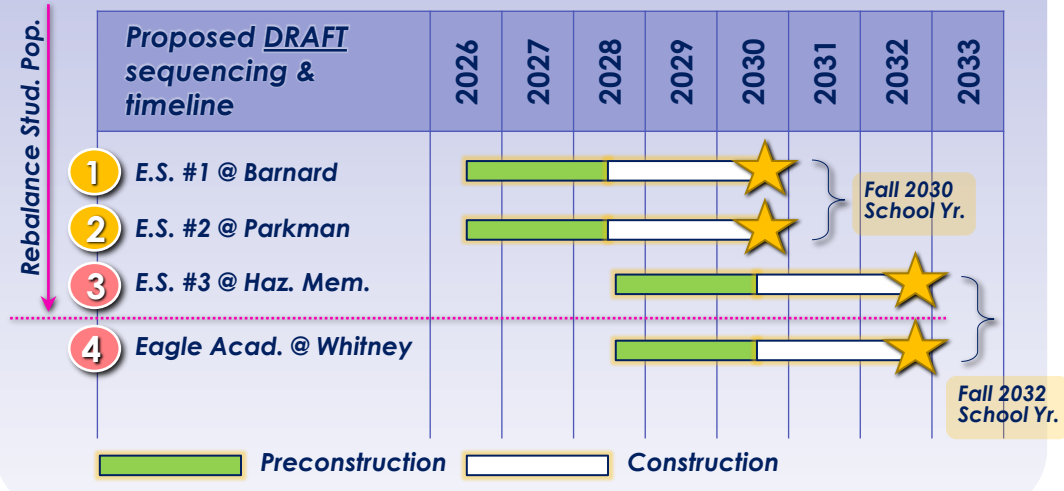
TPC \$123M
CTE ~ \$22M

4'

Eagle @ Whitney E.S.

G/L: K-12
Stud.: 85-100P
Area: 55-60K GSF
Type: Reno.

ECDC/Town @ (E) Eagle
TPC \$38M
CTE ~ \$8M



As presented at the Pre-Referendum Building Committee meeting on September 24, 2025. All information contained herein is subject to change as further planning and refinements are developed.

PLANNING OPTIONS...INITIAL DISCUSSIONS...WHAT IS POSSIBLE

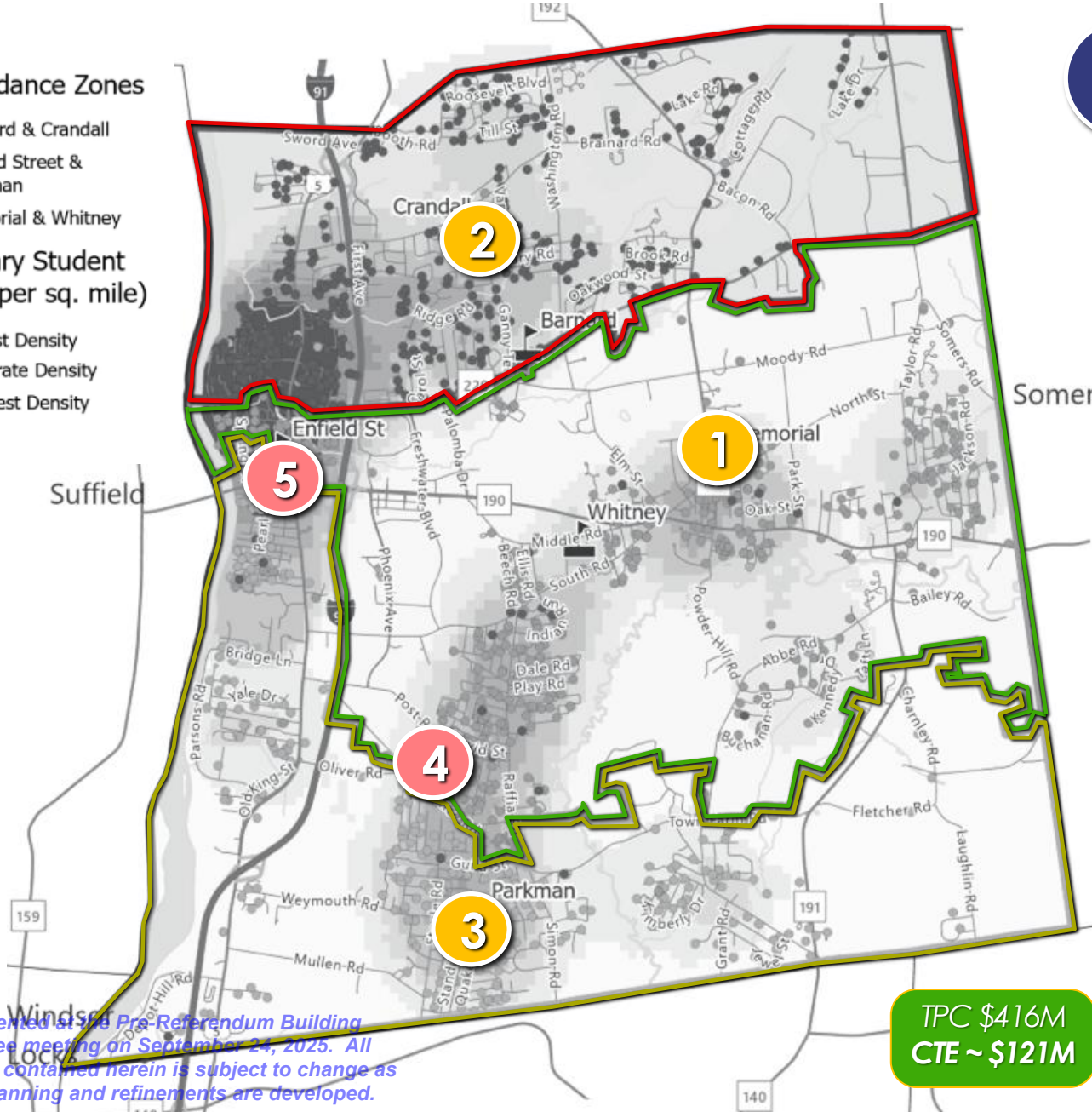


ES Attendance Zones

- Barnard & Crandall
- Enfield Street & Parkman
- Memorial & Whitney

Elementary Student Density (per sq. mile)

- Lowest Density
- Moderate Density
- Greatest Density



TPC \$416M
CTE ~ \$121M

B2 Three E.S. School Scenario "Optimize & Consolidate" + ELC/PK + Eagle Academy

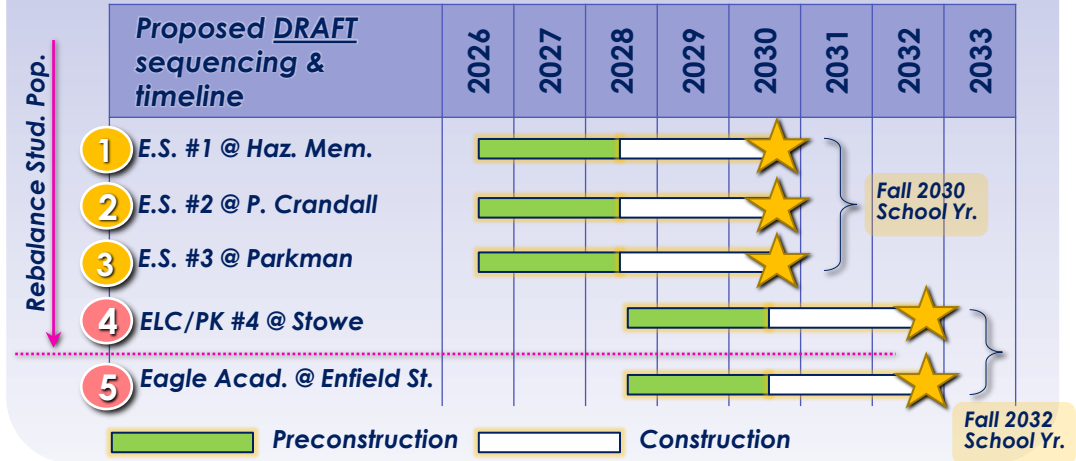
- 1** **E.S. #1 @ Haz. Mem.**
G/L: K-5
Stud.: 675-700P
Area: 96,000 GSF
Type: New/RNV
TPC \$101M
CTE ~ \$33M

2 **E.S. #2 @ P. Crandall**
G/L: K-5
Stud.: 675-700P
Area: 96,000 GSF
Type: New/RNV
TPC \$107M
CTE ~ \$35M

3 **E.S. #3 @ E. Parkman**
G/L: K-5
Stud.: 675-700P
Area: 96,000 GSF
Type: New/RNV
TPC \$105M
CTE ~ \$34M

4 **ELC/PK @ Stowe**
G/L: PK
Stud.: 325-350P
Area: 47,500 GSF
Type: New/RNV
TPC \$65M
CTE ~ \$11M

5 **Eagle @ Enfield St. E.S.**
G/L: K-12
Stud.: 85-100P
Area: 55-60K GSF
Type: Renovation
TPC \$38M
CTE ~ \$8M
ECDC/Town @ (E) Eagle



As presented at 5/28 Pre-Referendum Building Committee meeting on September 24, 2025. All information contained herein is subject to change as further planning and refinements are developed.

PLANNING OPTIONS...INITIAL DISCUSSION



Alternative Site locations

B2

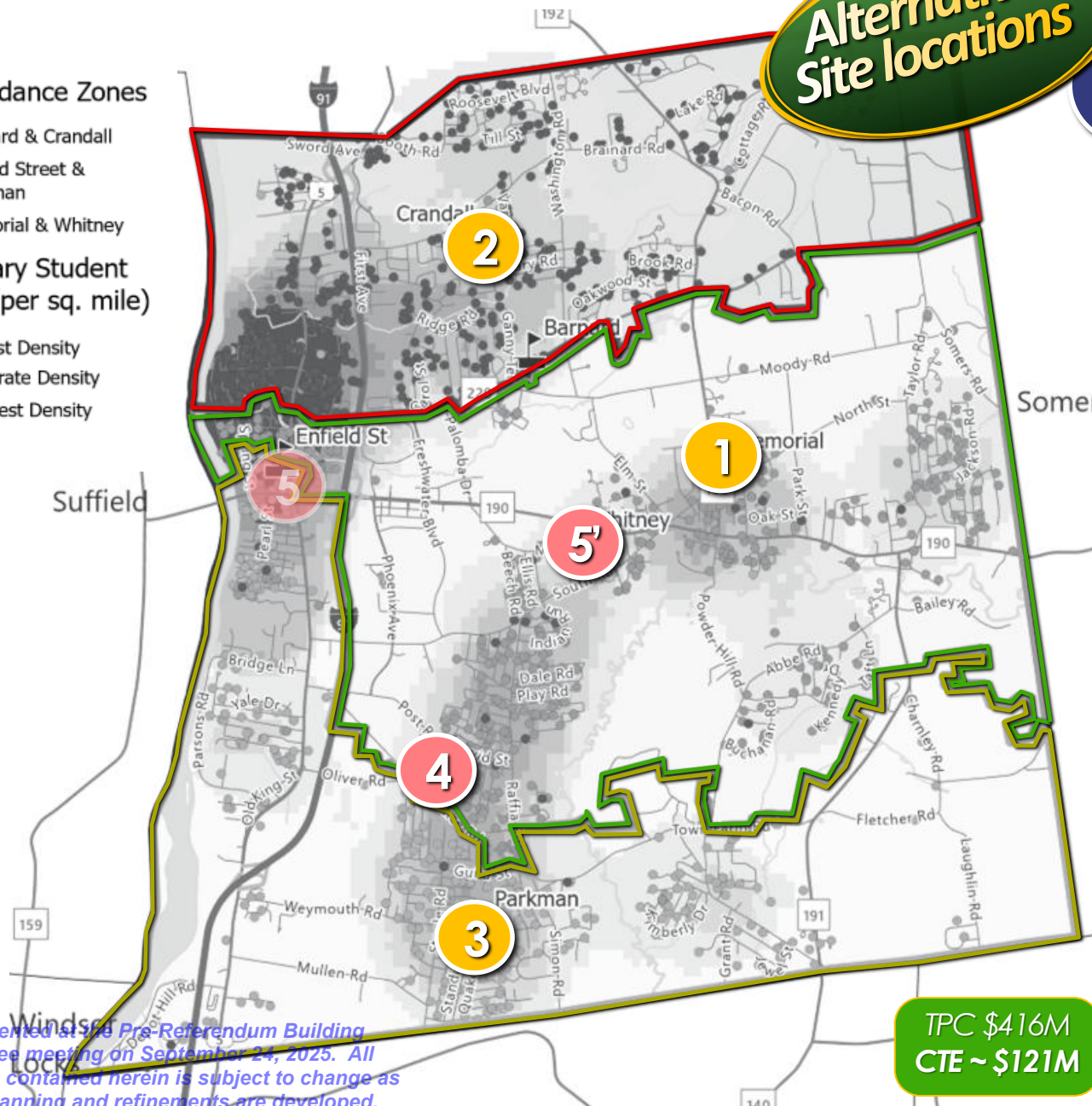
Three E.S. School Scenario "Optimize & Consolidate" + ELC/PK + Eagle Academy

ES Attendance Zones

- Barnard & Crandall
- Enfield Street & Parkman
- Memorial & Whitney

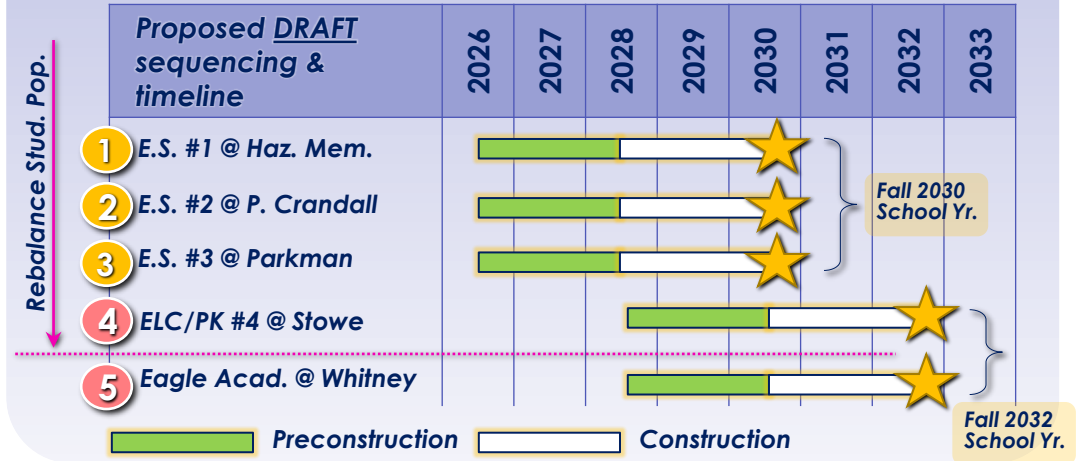
Elementary Student Density (per sq. mile)

- Lowest Density
- Moderate Density
- Greatest Density



**TPC \$416M
CTE ~ \$121M**

1	E.S. #1 @ Haz. Mem. G/L: K-5 # Stud.: 675-700P Area: 96,000 GSF Type: New/RNV TPC \$101M CTE ~ \$33M	2	E.S. #2 @ P. Crandall G/L: K-5 # Stud.: 675-700P Area: 96,000 GSF Type: New/RNV TPC \$107M CTE ~ \$35M
3	E.S. #3 @ E. Parkman G/L: K-5 # Stud.: 675-700P Area: 96,000 GSF Type: New/RNV TPC \$105M CTE ~ \$34M	4	ELC/PK @ Stowe G/L: PK # Stud.: 325-350P Area: 47,500 GSF Type: New/RNV TPC \$65M CTE ~ \$11M
5'	Eagle @ Whitney E.S. G/L: K-12 # Stud.: 85-100P Area: 55-60K GSF Type: Renovation TPC \$38M CTE ~ \$8M ECDC/Town @ (E) Eagle		



As presented at 5/28 Pre-Referendum Building Committee meeting on September 24, 2025. All information contained herein is subject to change as further planning and refinements are developed.

PLANNING OPTIONS...INITIAL DISCUSSIONS...WHAT IS POSSIBLE

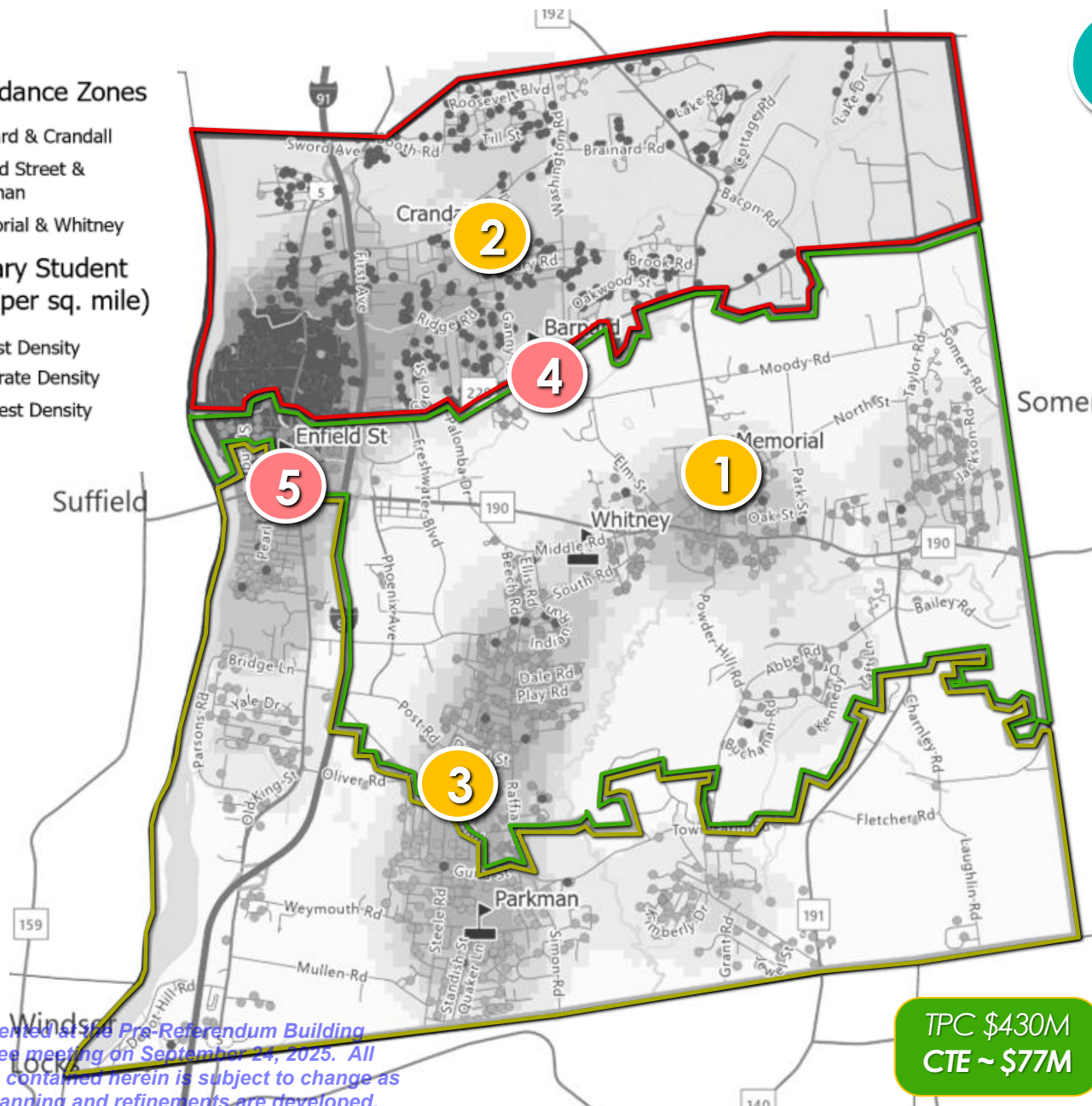


ES Attendance Zones

- Barnard & Crandall
- Enfield Street & Parkman
- Memorial & Whitney

Elementary Student Density (per sq. mile)

- Lowest Density
- Moderate Density
- Greatest Density



TPC \$430M
CTE ~ \$77M

C1

Four E.S. School Scenario **"Optimize & Consolidate" + Eagle Academy**

- 1
E.S. #1 @ Haz. Mem.

G/L: PK-5
 # Stud.: 590-620P
 Area: 85,000 GSF
 Type: New/RNV

TPC \$91M
 CTE ~ \$16M

2
E.S. #2 @ P. Crandall

G/L: PK-5
 # Stud.: 590-620P
 Area: 85,000 GSF
 Type: New/RNV

TPC \$97M
 CTE ~ \$17M

3
E.S. #3 @ Stowe

G/L: PK-5
 # Stud.: 590-620P
 Area: 85,000 GSF
 Type: New/RNV

TPC \$98M
 CTE ~ \$17M

4
E.S. #4 @ Barnard

G/L: PK-5
 # Stud.: 590-620P
 Area: 85,000 GSF
 Type: New/RNV

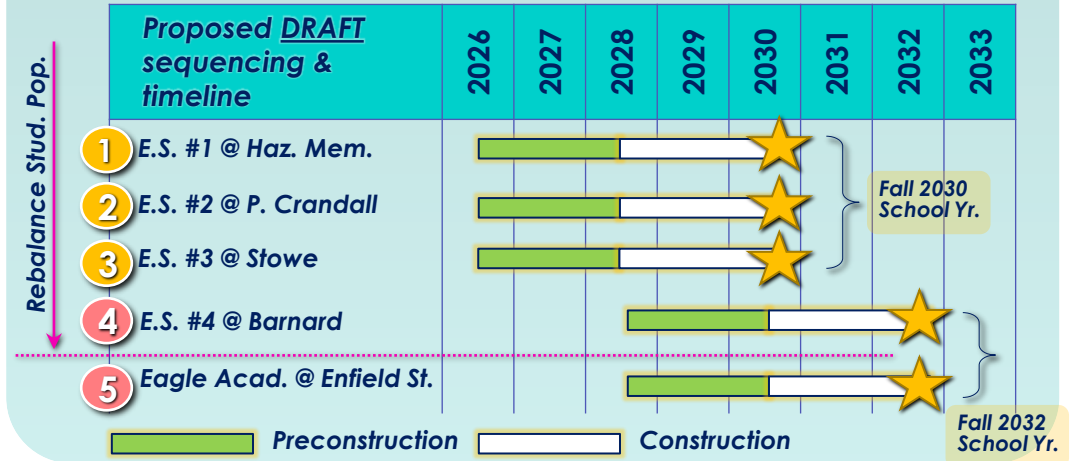
TPC \$106M
 CTE ~ \$19M

5
Eagle @ Enfield St. E.S.

G/L: K-12 Area: 55-60K GSF
 # Stud.: 85-100P Type: Renovation

TPC \$38M
 CTE ~ \$8M

ECDC/Town @ (E) Eagle



As presented at 5/28 Pre-Referendum Building Committee meeting on September 24, 2025. All information contained herein is subject to change as further planning and refinements are developed.

PLANNING OPTIONS...INITIAL DISCUSSION IS POSSIBLE

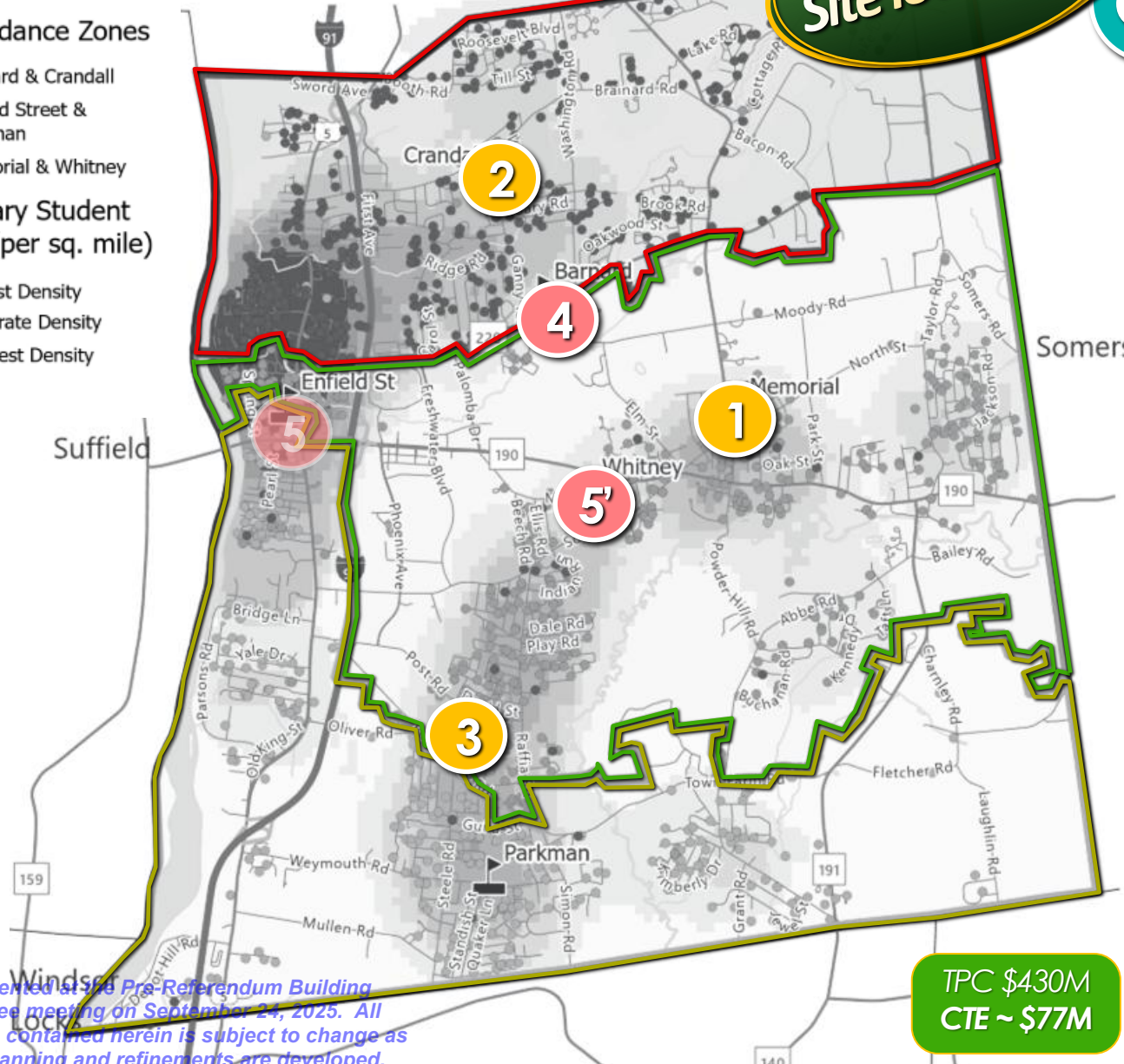


Alternative Site locations

C1

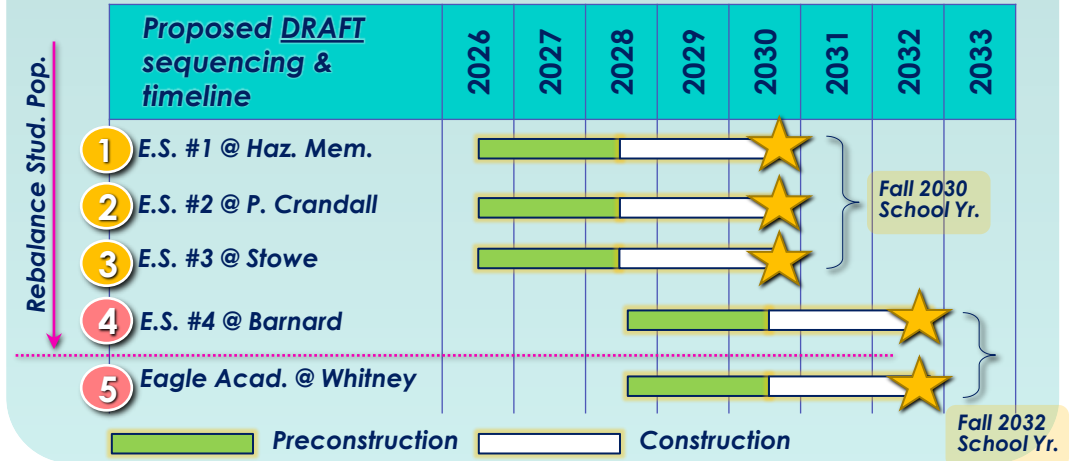
Four E.S. School Scenario "Optimize & Consolidate" + Eagle Academy

- ES Attendance Zones**
- Barnard & Crandall
 - Enfield Street & Parkman
 - Memorial & Whitney
- Elementary Student Density (per sq. mile)**
- Lowest Density
 - Moderate Density
 - Greatest Density



**TPC \$430M
CTE ~ \$77M**

- 1 E.S. #1 @ Haz. Mem.**
 G/L: PK-5
 # Stud.: 590-620P
 Area: 85,000 GSF
 Type: New/RNV
 TPC \$91M
 CTE ~ \$16M
- 2 E.S. #2 @ P. Crandall**
 G/L: PK-5
 # Stud.: 590-620P
 Area: 85,000 GSF
 Type: New/RNV
 TPC \$97M
 CTE ~ \$17M
- 3 E.S. #3 @ Stowe**
 G/L: PK-5
 # Stud.: 590-620P
 Area: 85,000 GSF
 Type: New/RNV
 TPC \$98M
 CTE ~ \$17M
- 4 E.S. #4 @ Barnard**
 G/L: PK-5
 # Stud.: 590-620P
 Area: 85,000 GSF
 Type: New/RNV
 TPC \$106M
 CTE ~ \$19M
- 5' Eagle @ Whitney E.S.**
 G/L: K-12
 # Stud.: 85-100P
 Area: 55-60K GSF
 Type: Renovation
 TPC \$38M
 CTE ~ \$8M
 ECDC/Town @ (E) Eagle



As presented at 5/28 Pre-Referendum Building Committee meeting on September 24, 2025. All information contained herein is subject to change as further planning and refinements are developed.

PLANNING OPTIONS...INITIAL DISCUSSIONS...WHAT IS POSSIBLE

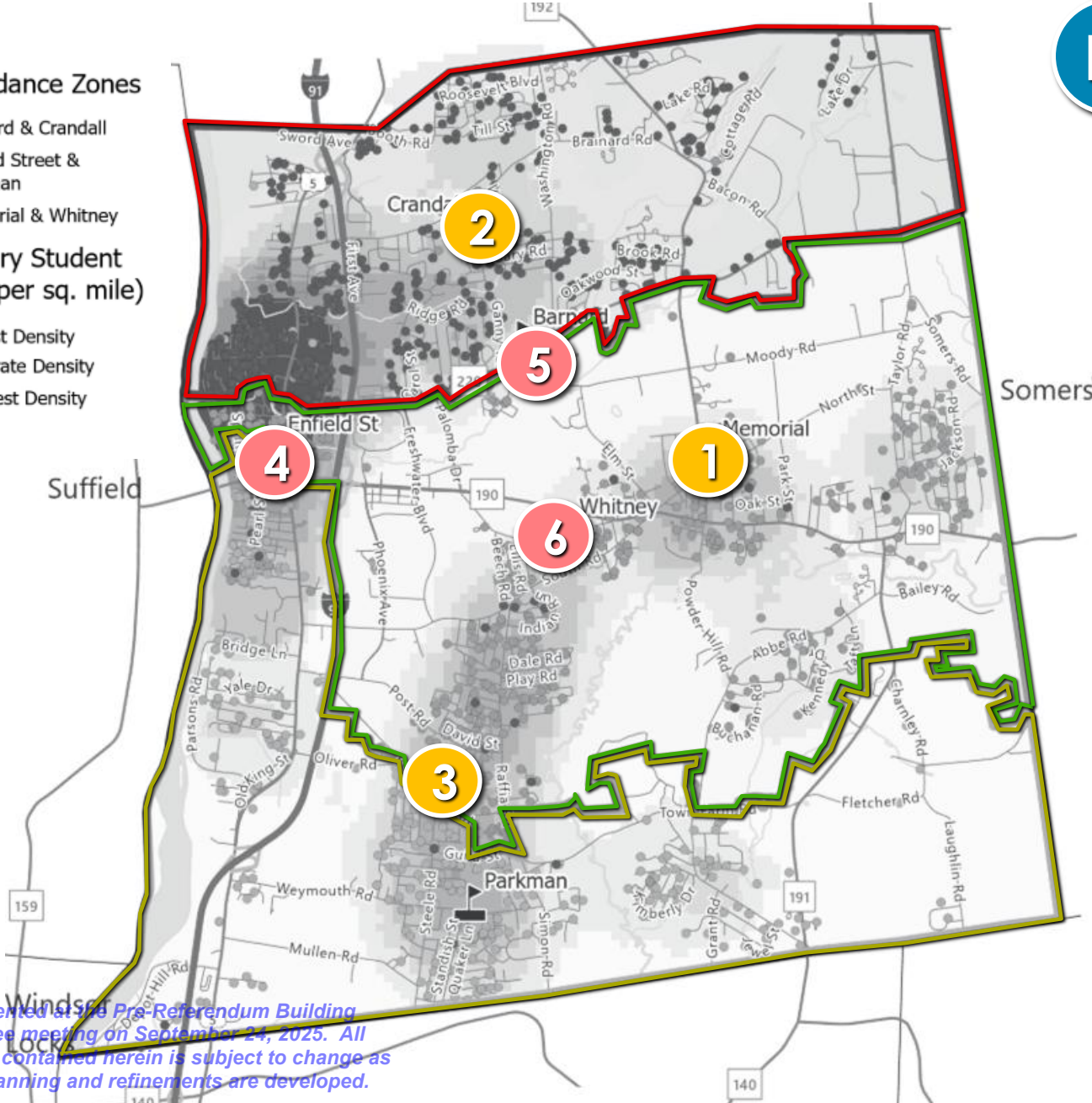


ES Attendance Zones

- Barnard & Crandall
- Enfield Street & Parkman
- Memorial & Whitney

Elementary Student Density (per sq. mile)

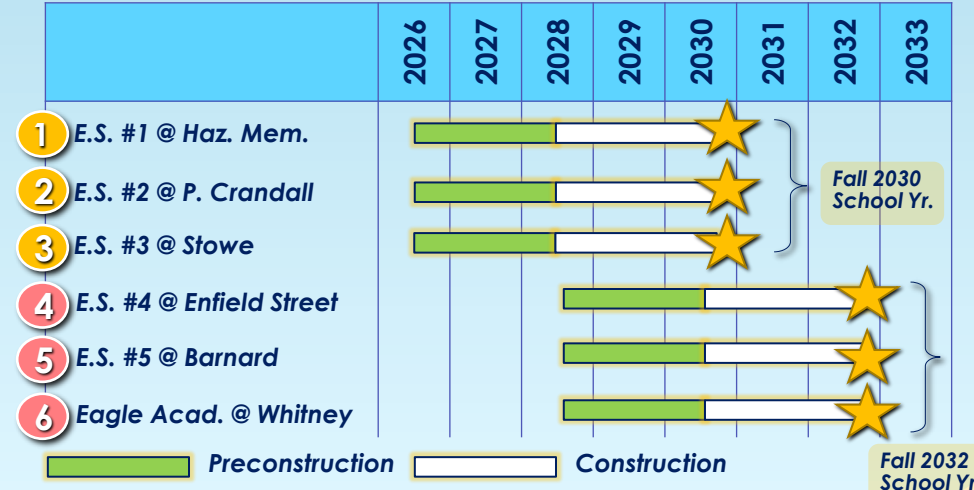
- Lowest Density
- Moderate Density
- Greatest Density



E1 Five E.S. School Scenario "Optimize & Consolidate" + Eagle Academy

- 1** **E.S. #1 @ Haz. Mem.**
 G/L: PK-5
 # Stud.: 475-500P
 Area: 68,700 GSF
 Type: New/RNV
- 2** **E.S. #2 @ P. Crandall**
 G/L: PK-5
 # Stud.: 475-500P
 Area: 68,700 GSF
 Type: New/RNV
- 3** **E.S. #3 @ Stowe**
 G/L: PK-5
 # Stud.: 475-500P
 Area: 68,700 GSF
 Type: New/RNV
- 4** **E.S. #4 @ Enfield Street**
 G/L: PK-5
 # Stud.: 475-500P
 Area: 68,700 GSF
 Type: New/RNV
- 5** **E.S. #5 @ Barnard**
 G/L: PK-5
 # Stud.: 475-500P
 Area: 68,700 GSF
 Type: New/RNV
- 6** **Eagle Acad. @ Whitney**
 G/L: K-12
 # Stud.: 85-100P
 Area: 55-60K GSF
 Type: New/RNV

ECDC/Town @ (E) Eagle



Fall 2030 School Yr.

Fall 2032 School Yr.

As presented at 5/28 Pre-Referendum Building Committee meeting on September 24, 2025. All information contained herein is subject to change as further planning and refinements are developed.



Tecton
ARCHITECTS

COMMUNITY ENGAGEMENT

COMMUNITY CONVERSATIONS, EVENTS, THINK TANKS, VIDEOS, SURVEYS

As presented at the Pre-Referendum Building Committee meeting on September 24, 2023. All information contained herein is subject to change as further planning and refinements are developed.

ACTIVITY BOOK MOCKUP



ENFIELD PUBLIC SCHOOLS
We make a difference in Enfield - every child, every day.

What does a day at school mean to you?
Write your story here!

Author _____

ENFIELD PUBLIC SCHOOLS
Idea Book


COME ON AND HELP US OUT!
WE WANT TO READ ABOUT YOUR IDEAS!

Please take some time to share your ideas in your very own Idea Book about what you would like to see at school. We will use many of these activities as you would like! This information will help us as designers to create the very best educational environment for our students to go to school today.

PICTURE PERFECT

What pictures are your favorite?
Circle whole images or parts of one!

Attach one if you have a favorite of your own.



Tecton ARCHITECTS

This page can be removed after cutting out the images.



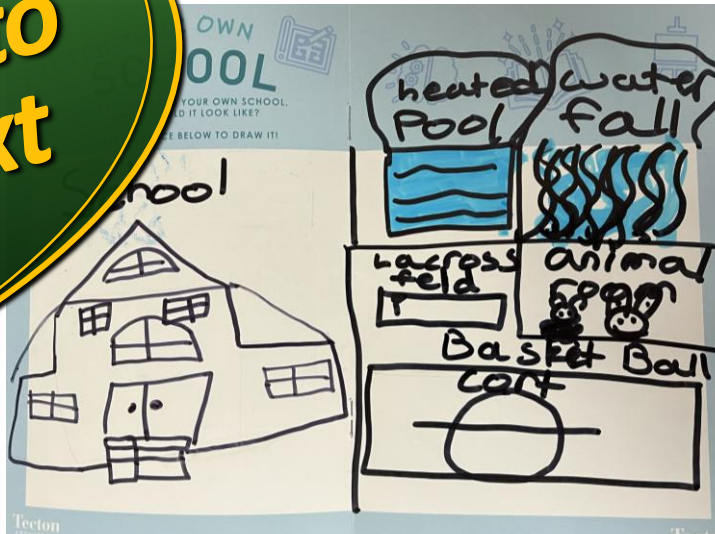
SKETCH YOUR OWN SCHOOL

IF YOU DESIGNED YOUR OWN SCHOOL, WHAT WOULD IT LOOK LIKE?
USE THE SPACE BELOW TO DRAW IT!



OWN SCHOOL


YOUR OWN SCHOOL, WHAT WOULD IT LOOK LIKE?
USE THE SPACE BELOW TO DRAW IT!



heated water pool
water fall
access field
animal farm
Basketball court

Tecton ARCHITECTS

Example from a student in Madison, CT



Activity Books are being printed! Distribution to the schools likely next week.

As presented at the Pre-Referendum Building Committee meeting on September 24, 2025. All information contained herein is subject to change as further planning and refinements are developed.

NEXT STEPS...UPCOMING EVENTS



Community Conversations...

Wed.
10/22
6-7pm

Wed.
12/17
6-7pm

Wed.
2/4

Early-Mid
Nov.

Existing Conditions

In-Person +
Livestream/Recorded

Location: JFK Auditorium

- 8/21 JFK
- 8/25 JFK
- 9/3 GR 3-5
- 9/17 GR 1-2
- 9/18 JFK
- 9/25 EHS
- 10/8 STOWE

Open Houses

Boards
Fliers
Activity Books

EPS Family Day

Boards
Fliers
Activity Books

Trunk or Treat

Boards
Fliers
Activity Books
(candy!)

Holiday Concerts

Updated Boards

Boards, Flyers, Postcards... Have been printed and delivered to schools!

Sunday
Sept.

Coming
soon

TBD
Dates
coming
soon

Postcard

Enfield Public Schools
PK-5 Districtwide Master Plan

Join us for a Community Conversation!

Wed. 10/22 6-7pm
Theme: Existing Conditions
JFK Middle School Auditorium

Wed. 12/17 6-7pm
Theme: Initial Options - Virtual Q&A
Event: Meeting in person at JFK Middle School Auditorium

Wed. 2/4 6-7pm
Theme: Finalizing the Plan
Event: Meeting in person at Enfield High School Auditorium

Scan this code to visit the project website!

Enfield Public Schools
PK-5 Districtwide Master Plan

About the Project

Enfield Public Schools, in collaboration with the Board of Education and the Town of Enfield, is exploring opportunities to make improvements at each of our elementary schools (PK, K-2 and 3-5) and the Eagle Academy Therapeutic Day School, in order to advance the goals of the district and enhance the educational experience for our students in Enfield.

Although well maintained, the average age of our elementary schools is 63 years old. Through this process, we will create the blueprint for Enfield's educational future - we invite you to join us in the conversation!

Upcoming Events

Community Conversation #1
Wed. 10/22 6-7pm

Community Conversation #2
Wed. 12/17 6-7pm

Community Conversation #3
Wed. 2/4 6-7pm

Watch the Replay! All Community Conversations will also be recorded and posted to the project website.

Stay Connected! Project website: <https://www.enfieldschools.org/about/pk-5-school-modernization> Email address: enfield@enfieldschools.org

Enfield Public Schools
PK-5 Districtwide Master Plan

About the Project

Enfield Public Schools, in collaboration with the Board of Education and the Town of Enfield, is exploring opportunities to make improvements at each of our elementary schools (PK, K-2 and 3-5) and the Eagle Academy Therapeutic Day School, in order to advance the goals of the district and enhance the educational experience for our students in Enfield.

Although well maintained, the average age of our elementary schools is 63 years old. Through this process, we will create the blueprint for Enfield's educational future - we invite you to join us in the conversation!

Upcoming Events

Community Conversation #1
Wed. 10/22 6-7pm

Community Conversation #2
Wed. 12/17 6-7pm

Community Conversation #3
Wed. 2/4 6-7pm

Existing Conditions - Six Elementary Schools, Pre-K, & Therapeutic Day School

Macro Schedule

Reimbursement Rates

Planning Options & State Reimbursement

58.57 vs. 68.57%

Watch the Replay! All Community Conversations will also be recorded and posted to the project website.

Stay Connected! Project website: <https://www.enfieldschools.org/about/pk-5-school-modernization> Email address: enfield@enfieldschools.org

Board for Open Houses

Upcoming Events Flyer

As presented at the Pre-Referendum Building Committee meeting on September 24, 2025. All information contained herein is subject to change as further planning and refinements are developed.

Community Conversation #1 - AGENDA

Start: 6:00PM

Superintendent's Opening Remarks

5
min

Team Introduction

10
min

Critical Aspects of the Project (Scope & Schedule)

10
min

What We Know So Far

Conversations to Date
Initial Walkthroughs – Conditions
Benchmarking

30
min

Interactive Discussion

5
min

What's Next & How to Stay Connected

Draft Agenda for Community
Conversation #1 on 10/22

End: 7:00PM

OUR SURVEY OPENS SOON!



**Closes
December 8th!**



**Your Voice Matters!
Share your feedback with us.**

**A survey is planned to open
after CC#1! Questions will be
distributed for feedback.**

Survey Topic:

Identifying the Need, Vision and
Prioritization

Approximate time to complete: 5-8 minutes



Link to Survey

<https://www.surveymonkey.com/r/EnfieldPK-5Masterplan>

Enfield Public Schools
PK-5 Districtwide Master Plan

Join us as we shape a future for Enfield Public Schools that prepares our students and our community for the challenges and opportunities ahead.
Your Voice Matters!

Upcoming Events:

- Community Conversation #1
Wed. 10/22 6-7pm
JFK Middle School Auditorium
- Community Conversation #2
Wed. 12/17 6-7pm
Virtual Zoom Meeting
Meeting ID: 899 2439 3105
Passcode: 209952
- Community Conversation #3
Wed. 2/4 6-7pm
Enfield High School Auditorium

Please Take Our Survey:

Scan the code to get started

OR:
Visit this website
<https://www.surveymonkey.com/r/EnfieldPK-5Masterplan>

Please note: this survey will close on December 8th, and the data will be shared at Community Conversation #2

Stay Connected! Project website: https://www.enfieldschools.org/about/p_k-5_school_modernization

As presented at the Pre-Referendum Building Committee meeting on September 24, 2025. All information contained herein is subject to change as further planning and refinements are developed.

JOIN THE INTERACTIVE DISCUSSION!



**Mentimeter is planned for 10/22!
Questions will be distributed for
feedback.**

Instructions

Go to

www.menti.com

Enter the code

7197 4594



Or use QR code



Tecton
ARCHITECTS

PK-5 ELEMENTARY SCHOOLS & EAGLE ACADEMY THERAPEUTIC DAY SCHOOL

ENFIELD, CT

PRE-REFERENDUM BUILDING COMMITTEE MEETING

09.24.2025

*As presented at the Pre-Referendum Building
Committee meeting on September 24, 2025. All
information contained herein is subject to change as
further planning and refinements are developed.*